



**India Meteorological Department
(Ministry of Earth Sciences)**

SPECIAL BULLETIN NO. 2

TIME OF ISSUE:1220 HOURS IST

DATED: 18.11.2022

FROM: INDIA METEOROLOGICAL DEPARTMENT (FAX NO. 24643965/24699216/24623220)

TO: CONTROL ROOM, NDM, MINISTRY OF HOME AFFAIRS (FAX.NO. 23093750)

CONTROL ROOM NDMA (FAX.NO. 26701729)

CABINET SECRETARIAT (FAX.NO.23012284, 23018638)

PS TO HON'BLE MINISTER FOR S & T AND EARTH SCIENCES (FAX NO.23316745)

SECRETARY, MOES (FAX NO. 24629777)

H.Q. (INTEGRATED DEFENCE STAFF AND CDS) (FAX NO. 23005137/23005147)

DIRECTOR GENERAL, DOORDARSHAN (23385843)

DIRECTOR GENERAL, AIR (23421105, 23421219)

PIB MOES (FAX NO. 23389042)

UNI (FAX NO. 23355841)

D.G. NATIONAL DISASTER RESPONSE FORCE (NDRF) (FAX NO. 26105912, 2436 3260)

DIRECTOR, PUNCTUALITY, INDIAN RAILWAYS (FAX NO. 23388503)

CHIEF SECRETARY, ANDAMAN & NICOBAR ISLANDS (FAX NO. 03192- 232656)

CHIEF SECRETARY, GOVT. WEST BENGAL (FAX NO. 033-22144328)

CHIEF SECRETARY, GOVT. OF ODISHA (FAX NO. 0674 -2536660)

CHIEF SECRETARY, GOVT. OF ANDHRA PRADESH (FAX NO. 0863-2441029, 08645-246600)

CHIEF SECRETARY, GOVT. OF TAMIL NADU (FAX NO. 044-25672304)

CHIEF SECRETARY, GOVT. OF PUDUCHERRY (FAX NO. 0413-2337575, 2334145)

Sub: Low pressure area over Southeast Bay of Bengal & neighbourhood

Yesterday's low pressure area over Southeast Bay of Bengal & adjoining Andaman Sea moved westwards and lay over Southeast Bay of Bengal & neighbourhood in the morning of today, the 18th November, 2022. It is likely to move west-northwestwards and gradually concentrate into a Depression over central parts of South Bay of Bengal during next 48 hours. Thereafter, it is very likely to move west-northwestwards towards Tamilnadu-Puducherry and south Andhra Pradesh coasts during subsequent 3 days.

Warnings:

(i) Rainfall (warning graphics enclosed)

- ❖ Light to moderate rainfall at many places is very likely over Andaman & Nicobar Islands on 18th November.
- ❖ Light to moderate rainfall at most places with heavy falls at isolated places is very likely over North Coastal Tamilnadu-Puducherry, Karaikal on 20th November.
- ❖ Light to moderate rainfall at most places with heavy to very heavy falls at isolated places is very likely over North Coastal Tamilnadu-Puducherry, Karaikal and isolated heavy falls over south coastal Andhra Pradesh & adjoining Rayalseema on 21st November.
- ❖ Light to moderate rainfall at most places with heavy to very heavy falls at isolated places over North Tamilnadu-Puducherry and heavy rainfall at isolated places over South Andhra Pradesh & Rayalseema on 22nd November.

(ii) Wind warning:

- ❖ **Squally weather with wind speed reaching 40-45 kmph gusting to 55 kmph** is likely to prevail over Southeast Bay of Bengal and adjoining areas of Southwest & central Bay of Bengal on 18th November.
- ❖ **Squally wind speed reaching 45-55 kmph gusting to 65 kmph is likely to prevail over** Southwest and adjoining areas of Southeast & Westcentral Bay of Bengal and along & off Sri Lanka coasts on 19th November.
- ❖ **Squally wind speed reaching 45-55 kmph gusting to 65 kmph is likely to prevail over** Southwest and adjoining Westcentral Bay of Bengal and along & off South Andhra Pradesh, Tamil Nadu, Puducherry and Sri Lanka coasts during 20th – 22nd November.
- ❖ **Squally weather with wind speed reaching 40-45 kmph gusting to 55 kmph** is likely to prevail over Gulf of Mannar on 21st & 22nd November and over Westcentral & adjoining Southwest Bay of Bengal and along & off Andhra Pradesh & North Tamil Nadu on 23rd.

(iii) Sea condition

- ❖ **Sea condition will be rough** over Southeast Bay of Bengal and adjoining areas of Southwest & Westcentral Bay of Bengal on 18th November.
- ❖ **Sea condition will be rough to very rough** over Southwest and adjoining areas of Southeast & Westcentral Bay of Bengal and along & off Sri Lanka coasts on 19th November and over Southwest and adjoining Westcentral Bay of Bengal and along & off Andhra Pradesh, Tamil Nadu, Puducherry, Sri Lanka coasts during 20th – 22nd November.
- ❖ **Sea condition will be rough** over Gulf of Mannar on 21st & 22nd November and over Southwest & adjoining Westcentral Bay of Bengal and along & off Andhra Pradesh & North Tamil Nadu on 23rd November.

(iv) Fishermen Warning (warning graphics enclosed)

Fishermen are advised not to venture into:

- ❖ Southeast Bay of Bengal and adjoining areas of Southwest & Westcentral Bay of Bengal on 18th November.
- ❖ Southwest and adjoining areas of Southeast & Westcentral Bay of Bengal and along & off Sri Lanka coasts on 19th November
- ❖ Southwest and adjoining Westcentral Bay of Bengal and along & off Andhra Pradesh, Tamil Nadu, Puducherry, Sri Lanka coasts during 20th – 22nd November
- ❖ Gulf of Mannar on 21st & 22nd November and over Southwest & adjoining Westcentral Bay of Bengal and along & off Andhra Pradesh & North Tamil Nadu on 23rd.

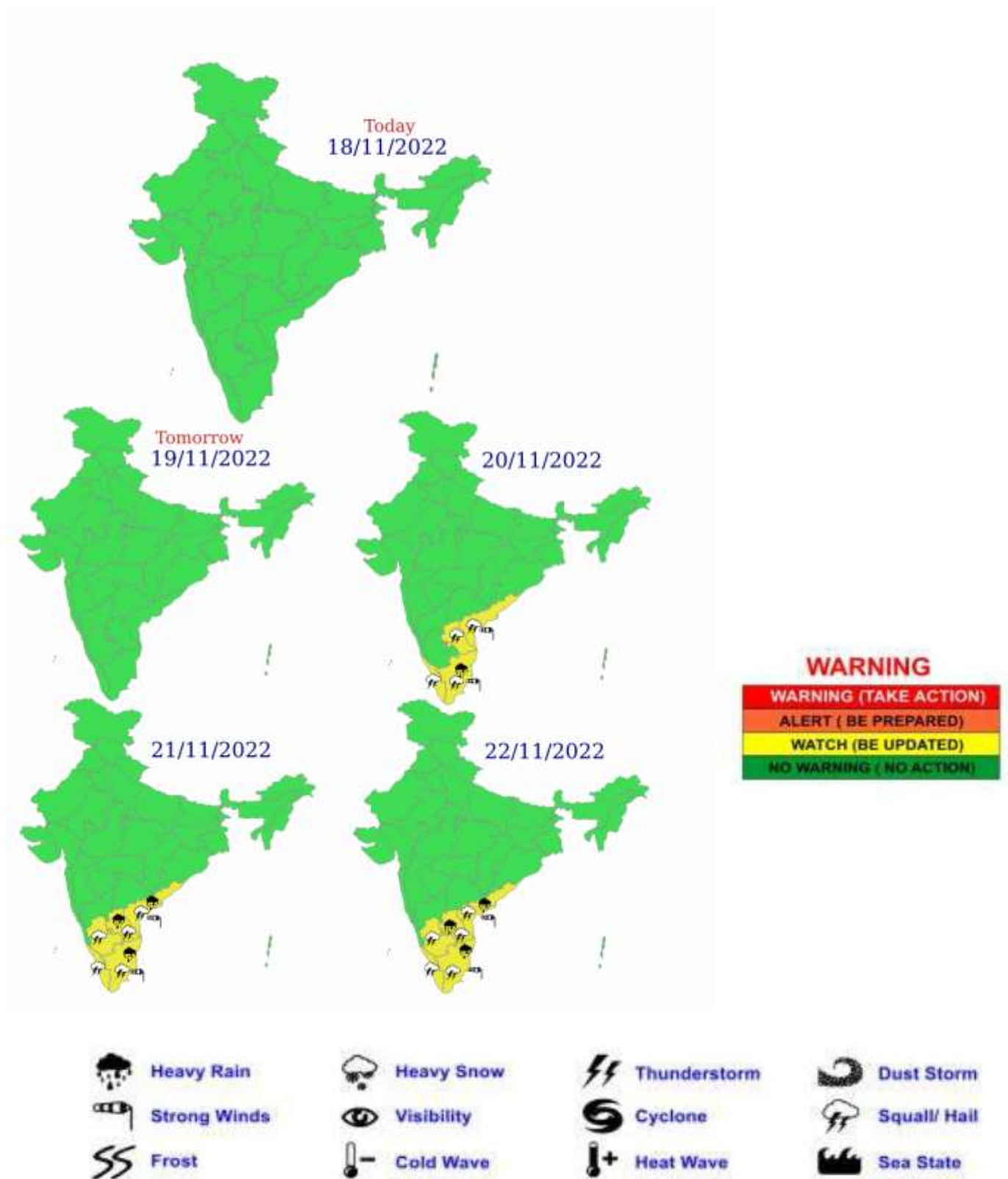
The system is under continuous surveillance and the next message will be issued at 1230 hours IST of tomorrow, the 19th November, 2022.

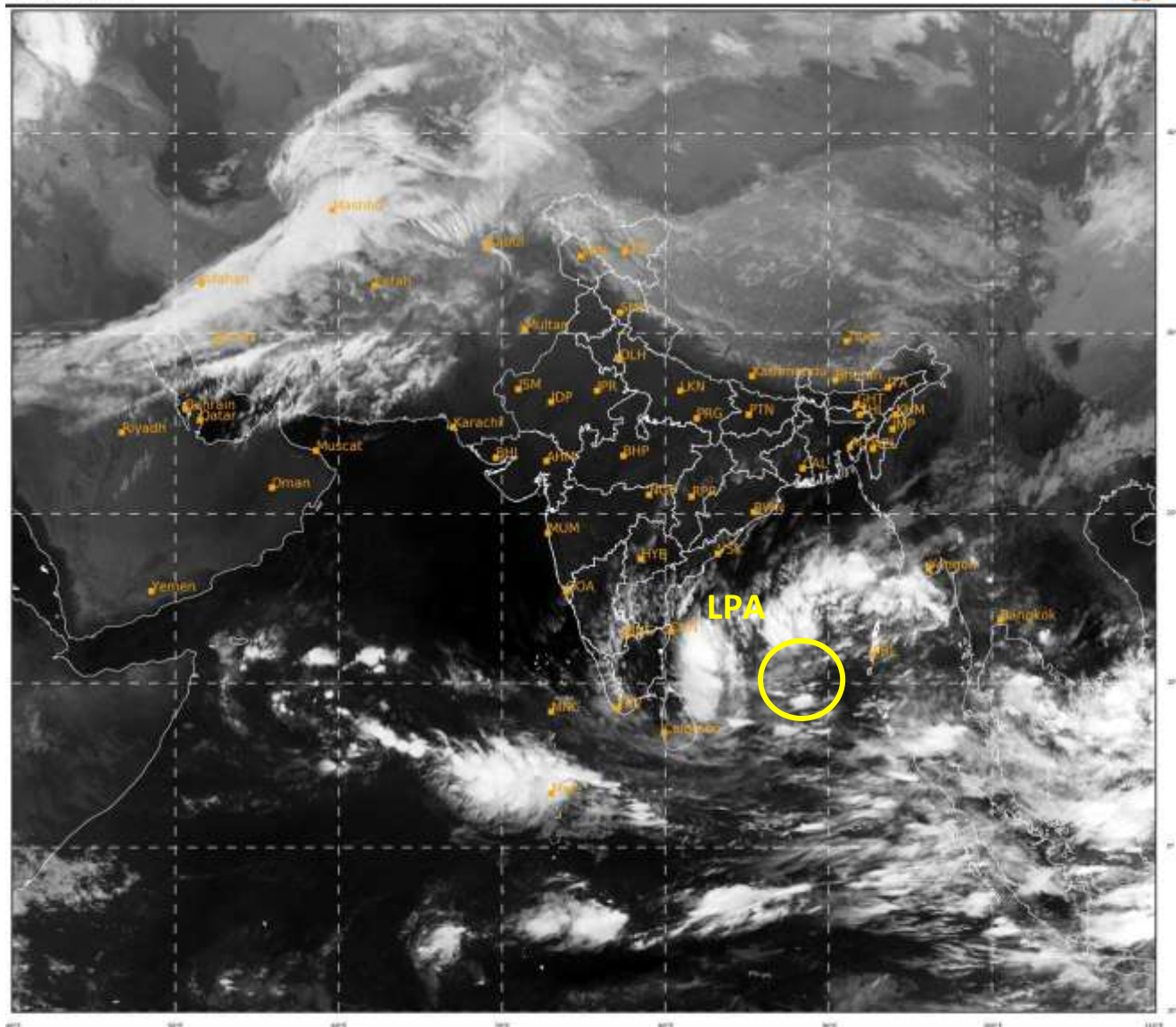
(Monica Sharma)
Scientist D, Cyclone Warning, New Delhi

Copy to: ACWC Kolkata/ ACWC Chennai/ CWC Bhubaneswar/CWCVisakhapatnam/MO Port Blair

LEGEND: Heavy Rainfall: 64.5 to 115.5mm, **Very Heavy Rainfall:** 115.6 to 204.4mm **Most Places:** more than 76% of total stations, **Isolated Places:** Less than 25% of total

Multi hazard Warning Graphics







LPA - LOW PRESSURE AREA

Fishermen warning graphics



	Squally weather with wind speed 40-45 kmph gusting to 55 kmph
	Squally wind speed with wind speed 45-55 kmph gusting to 65 kmph

Fishermen are advised not to venture into the marked areas.