



**India Meteorological Department
(Ministry of Earth Sciences)**

SPECIAL BULLETIN NO. 3

TIME OF ISSUE:1240 HOURS IST

DATED: 19.11.2022

FROM: INDIA METEOROLOGICAL DEPARTMENT (FAX NO. 24643965/24699216/24623220)

TO: CONTROL ROOM, NDM, MINISTRY OF HOME AFFAIRS (FAX.NO. 23093750)

CONTROL ROOM NDMA (FAX.NO. 26701729)

CABINET SECRETARIAT (FAX.NO.23012284, 23018638)

PS TO HON'BLE MINISTER FOR S & T AND EARTH SCIENCES (FAX NO.23316745)

SECRETARY, MOES (FAX NO. 24629777)

H.Q. (INTEGRATED DEFENCE STAFF AND CDS) (FAX NO. 23005137/23005147)

DIRECTOR GENERAL, DOORDARSHAN (23385843)

DIRECTOR GENERAL, AIR (23421105, 23421219)

PIB MOES (FAX NO. 23389042)

UNI (FAX NO. 23355841)

D.G. NATIONAL DISASTER RESPONSE FORCE (NDRF) (FAX NO. 26105912, 2436 3260)

DIRECTOR, PUNCTUALITY, INDIAN RAILWAYS (FAX NO. 23388503)

CHIEF SECRETARY, ANDAMAN & NICOBAR ISLANDS (FAX NO. 03192- 232656)

CHIEF SECRETARY, GOVT. WEST BENGAL (FAX NO. 033-22144328)

CHIEF SECRETARY, GOVT. OF ODISHA (FAX NO. 0674 -2536660)

CHIEF SECRETARY, GOVT. OF ANDHRA PRADESH (FAX NO. 0863-2441029, 08645-246600)

CHIEF SECRETARY, GOVT. OF TAMIL NADU (FAX NO. 044-25672304)

CHIEF SECRETARY, GOVT. OF PUDUCHERRY (FAX NO. 0413-2337575, 2334145)

Sub: Well Marked Low pressure area over central parts of south Bay of Bengal

Yesterday's low pressure area over Southeast Bay of Bengal & neighbourhood moved west-northwestwards, concentrated into a well-marked low pressure area over central parts of south Bay of Bengal in the morning of today, the 19th November, 2022. It is likely to move west-northwestwards and gradually concentrate into a Depression over southwest Bay of Bengal and adjoining westcentral Bay of Bengal during next 24 hours. Thereafter, it is very likely to move west-northwestwards towards Tamilnadu-Puducherry and south Andhra Pradesh coasts during subsequent 2 days.

Warnings:

(i) Rainfall (warning graphics enclosed)

- ❖ Light to moderate rainfall is likely to commence from 20th November evening over coastal Andhra Pradesh and adjoining north Tamil Nadu & Rayalaseema. The intensity of rainfall is likely to increase with light to moderate rainfall at many places and isolated heavy rainfall is likely over North Tamilnadu-Puducherry and south coastal Andhra Pradesh & Rayalaseema on 21st and 22nd November and light to moderate rainfall at a few places over North coastal Andhra Pradesh during the same period.

(ii) Wind warning:

- ❖ **Squally weather with wind speed reaching 40-45 kmph gusting to 55 kmph is likely to prevail over** Southwest and adjoining areas of Southeast & Westcentral Bay of Bengal and along & off Sri Lanka coasts on 19th November.
- ❖ **Squally wind speed reaching 45-55 kmph gusting to 65 kmph is likely to prevail over** Southwest and adjoining Westcentral Bay of Bengal and along & off Andhra Pradesh, Tamil Nadu, Puducherry and Sri Lanka coasts during 20th – 22nd November.
- ❖ **Squally weather with wind speed reaching 40-45 kmph gusting to 55 kmph is likely to prevail over** Gulf of Mannar on 21st & 22nd November and over Westcentral & adjoining Southwest Bay of Bengal and along & off Andhra Pradesh & North Tamil Nadu coasts on 23rd.

(iii) Sea condition

- ❖ **Sea condition will be rough to very rough** over Southwest and adjoining areas of Southeast & Westcentral Bay of Bengal and along & off Sri Lanka coasts on 19th November and over Southwest and adjoining Westcentral Bay of Bengal and along & off Andhra Pradesh, Tamil Nadu, Puducherry, Sri Lanka coasts during 20th – 22nd November.
- ❖ **Sea condition will be rough** over Gulf of Mannar on 21st & 22nd November and Southwest & adjoining Westcentral Bay of Bengal and along & off Andhra Pradesh & North Tamil Nadu coasts on 23rd November.

(iv) Fishermen Warning (warning graphics enclosed)

Fishermen are advised not to venture into:

- ❖ Southwest and adjoining areas of Southeast & Westcentral Bay of Bengal and along & off Sri Lanka coasts on 19th November
- ❖ Southwest and adjoining Westcentral Bay of Bengal and along & off Andhra Pradesh, Tamil Nadu, Puducherry, Sri Lanka coasts during 20th – 22nd November
- ❖ Gulf of Mannar on 21st & 22nd November and over Southwest & adjoining Westcentral Bay of Bengal and along & off Andhra Pradesh & North Tamil Nadu coasts on 23rd.

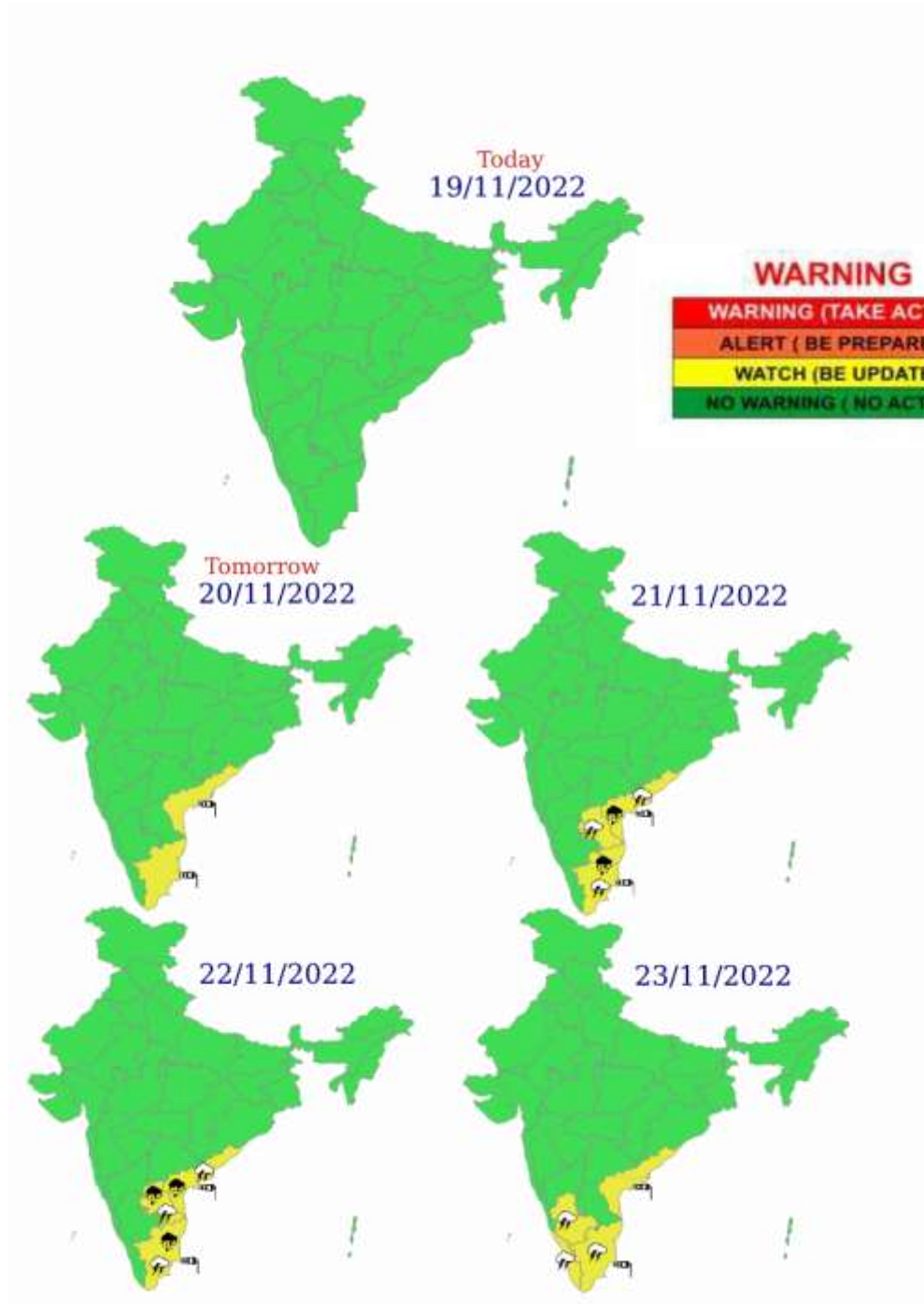
The system is under continuous surveillance and the next message will be issued at 1230 hours IST of tomorrow, the 20th November, 2022.

(Ananda Kumar Das)
Scientist E, Cyclone Warning, New Delhi

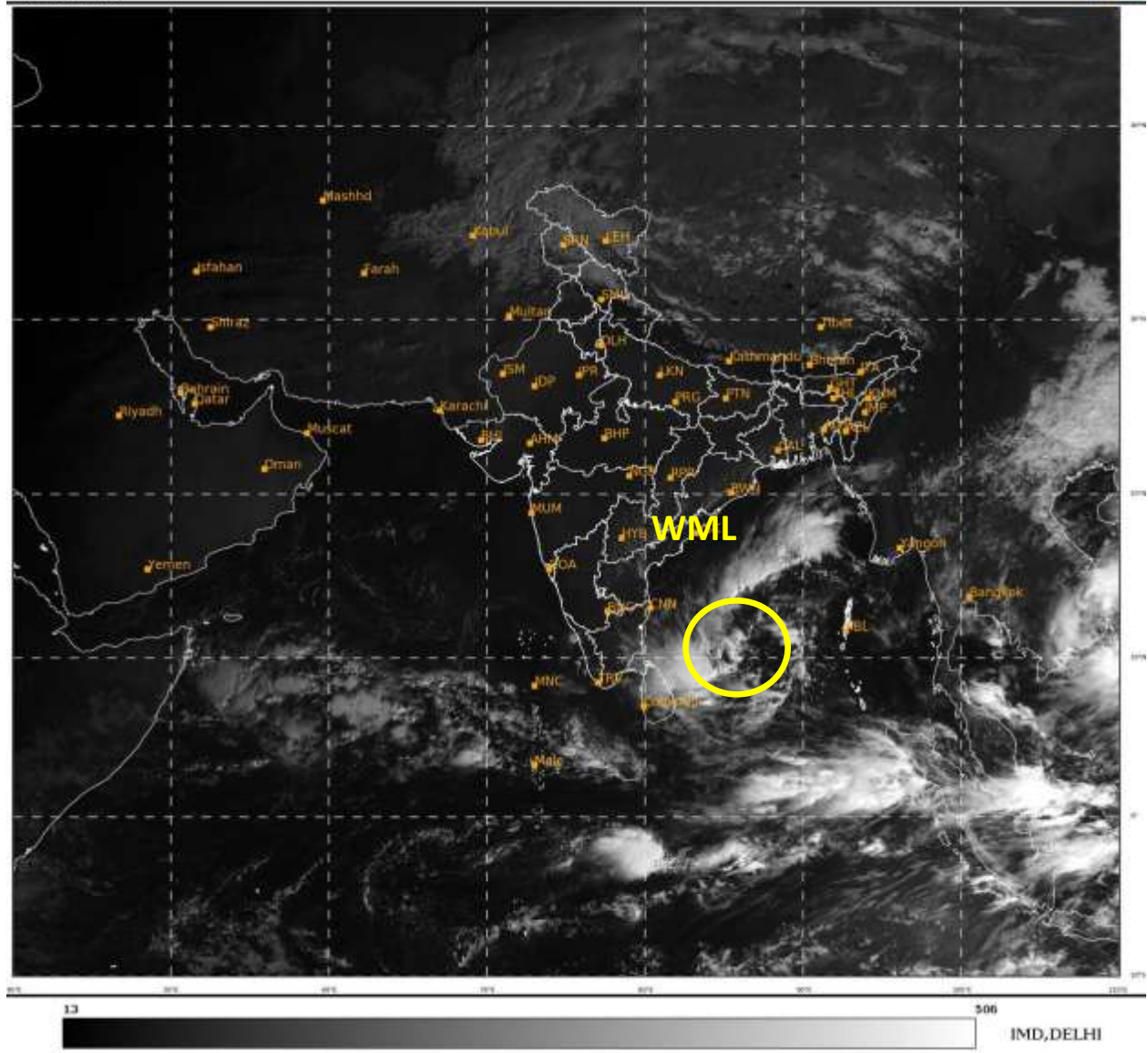
Copy to: ACWC Kolkata/ ACWC Chennai/ CWC Bhubaneswar/CWCVisakhapatnam/MO Port Blair

LEGEND: Heavy Rainfall: 64.5 to 115.5mm, **Very Heavy Rainfall:** 115.6 to 204.4mm **Most Places:** more than 76% of total stations, **Isolated Places:** Less than 25% of total

Multi hazard Warning Graphics



- | | | | |
|--|--|--|--|
|  Heavy Rain |  Heavy Snow |  Thunderstorm |  Dust Storm |
|  Strong Winds |  Visibility |  Cyclone |  Squall/ Hail |
|  Frost |  Cold Wave |  Heat Wave |  Sea State |



WML – WELL-MARKED LOW PRESSURE AREA

Fishermen warning graphics



Squally weather with wind speed 40-45 kmph gusting to 55 kmph

Squally wind speed with wind speed 45-55 kmph gusting to 65 kmph

Fishermen are advised not to venture into the marked areas.