



**India Meteorological Department  
(Ministry of Earth Sciences)**

**BULLETIN NO. 6 (BOB/06/2022)**

**TIME OF ISSUE: 1130 HOURS IST**

**DATED: 15.08.2022**

**FROM: INDIA METEOROLOGICAL DEPARTMENT (FAX NO. 24643965/24699216/24623220)**

**TO: CONTROL ROOM, NDM, MINISTRY OF HOME AFFAIRS (FAX.NO. 23093750)**

**CONTROL ROOM NDMA (FAX.NO. 26701729)**

**CABINET SECRETARIAT (FAX.NO.23012284, 23018638)**

**PS TO HON'BLE MINISTER FOR S & T AND EARTH SCIENCES (FAX NO.23316745)**

**SECRETARY, MOES (FAX NO. 24629777)**

**H.Q. (INTEGRATED DEFENCE STAFF AND CDS) (FAX NO. 23005137/23005147)**

**DIRECTOR GENERAL, DOORDARSHAN (23385843)**

**DIRECTOR GENERAL, AIR (23421105, 23421219)**

**PIB MOES (FAX NO. 23389042)**

**UNI (FAX NO. 23355841)**

**D.G. NATIONAL DISASTER RESPONSE FORCE (NDRF) (FAX NO. 26105912, 2436 3260)**

**DIRECTOR, PUNCTUALITY, INDIAN RAILWAYS (FAX NO. 23388503)**

**CHIEF SECRETARY, ODISHA (FAX NO. 0674-2536660)**

**CHIEF SECRETARY, WEST BENGAL (FAX NO. 033-22144328)**

**CHIEF SECRETARY, TAMILNADU (FAX NO. 044-25672304)**

**ADMINISTRATOR, ANDAMAN & NICOBAR ISLANDS (FAX NO. 03192- 232656)**

**CHIEF SECRETARY, PUDUCHERRY (FAX NO 0413-2334145)**

**CHIEF SECRETARY, ANDHRA PRADESH (FAX NO. 0863-2441029, 08645-246600)**

**CHIEF SECRETARY, GOVT. OF CHHATTISGARH (FAX NO. 771-2221206 )**

**CHIEF SECRETARY, GOVT. OF JHARKHAND (FAX NO. 651-2400255)**

**CHIEF SECRETARY, GOVT. OF MADHYA PRADESH (FAX NO. 755-2441076)**

**Sub: India Meteorological Department wishes a Very Happy Independence Day**

**Depression over Northwest Chhattisgarh and adjoining East Madhya Pradesh**

The depression over North Chhattisgarh and neighbourhood moved west-northwestwards with a speed of 25 kmph during last 6 hours and lay centered at 0830 hours IST of 15<sup>th</sup> August over Northwest Chhattisgarh and adjoining East Madhya Pradesh near latitude 22.6°N and longitude 82.0°E, about 20 km southwest of Pendra Road (Chhattisgarh), 170 km east of Mandla (Madhya Pradesh) and 220 km east of Jabalpur (Madhya Pradesh).

It is very likely to continue to move west-northwestwards and weaken gradually during next 12 hours.

**Warnings:**

**(i) Rainfall:**

**Chhattisgarh:** Rainfall at most places with heavy rainfall at isolated places very likely on 15<sup>th</sup> August.

**East Madhya Pradesh:** Rainfall at most places with heavy to very heavy rainfall at isolated places very likely on 15<sup>th</sup> August.

**West Madhya Pradesh:** Rainfall at most places with heavy to very heavy rainfall with isolated extremely heavy falls on 15<sup>th</sup> and heavy to very heavy rainfall at isolated places on 16<sup>th</sup> August.

**Vidarbha:** Rainfall at most places with heavy to very heavy rainfall at isolated places on 15<sup>th</sup> and heavy rainfall at isolated places on 16<sup>th</sup> August.

**Odisha:** Rainfall at many places with heavy rainfall at isolated places very likely over western Odisha on 15<sup>th</sup> August.

**(ii) Wind:**

Squally wind speed reaching 40-50 kmph gusting to 60 kmph is very likely over north and adjoining central Bay of Bengal and along & off West Bengal and Odisha during next 12 hours and gradually decrease thereafter

**(iii) Sea condition**

Sea condition is likely to be rough to very rough over north and adjoining central Bay of Bengal and along & off West Bengal and Odisha coasts during next 12 hours and gradually improve thereafter.

**(iii) Fishermen Warning**

Fishermen are advised not to venture into north and adjoining central Bay of Bengal and along & off West Bengal and Odisha coasts on 15<sup>th</sup> August.

**System is under continuous surveillance and the next message will be issued at 1430 hours IST of 15<sup>th</sup> August, 2022.**

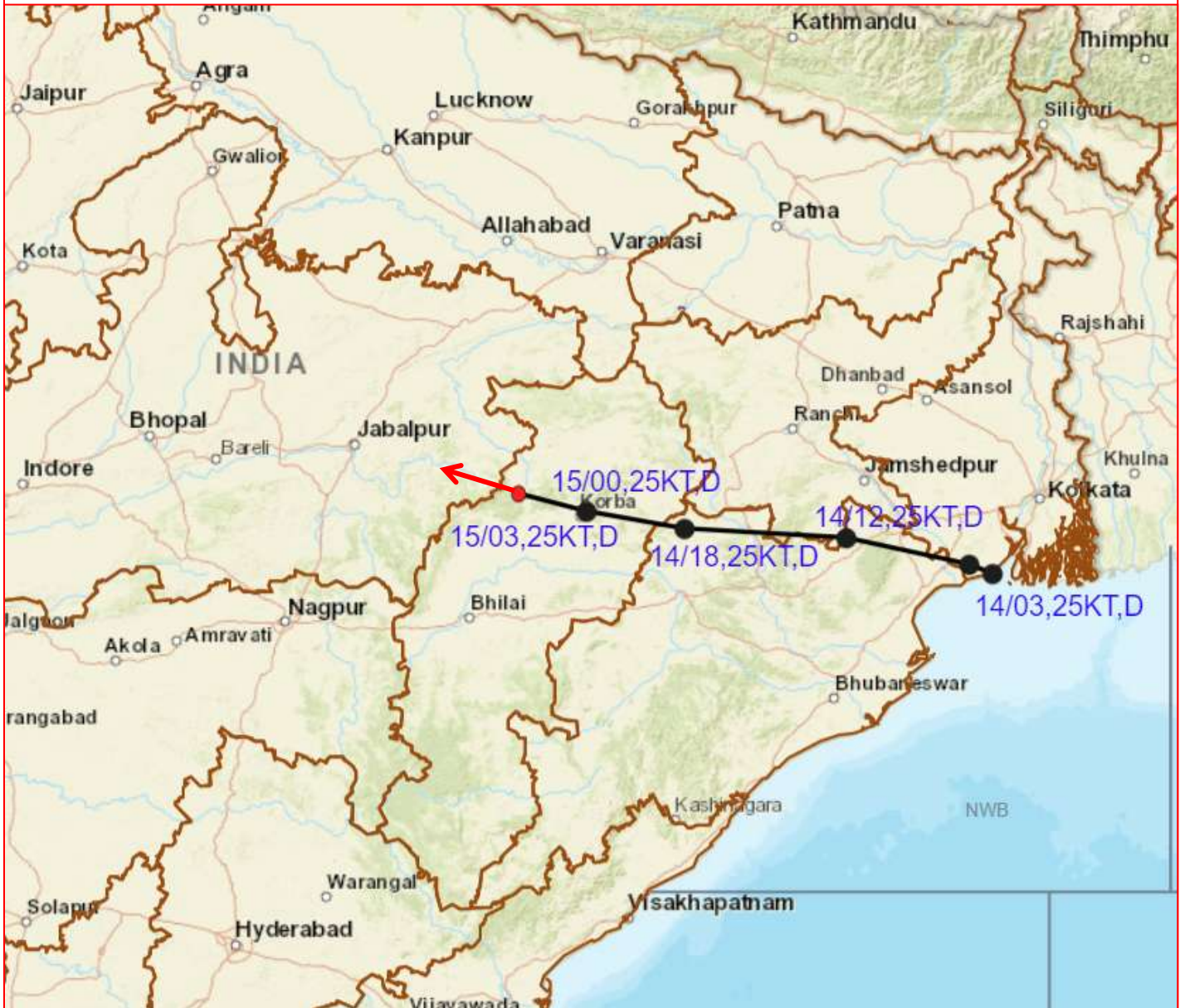
**(Ananda Kumar Das)**  
**Scientist E, Cyclone Warning Division, New Delhi**

**Copy to: ACWC Mumbai/ ACWC Kolkata/ ACWC Chennai/ CWC Bhubaneswar/CWC Visakhapatnam/CWC Ahmedabad/ MO Port Blair/MC Raipur/MC Bhopal/MC Hyderabad/RMC Nagpur/MC Goa/MC Bengaluru/CWC Thiruvananthapuram**

**LEGEND: Heavy Rainfall:** 64.5 to 115.5mm, **Very Heavy Rainfall:** 115.6 to 204.4mm **Most Places:** more than 76% of total stations, **Isolated Places:** Less than 25% of total



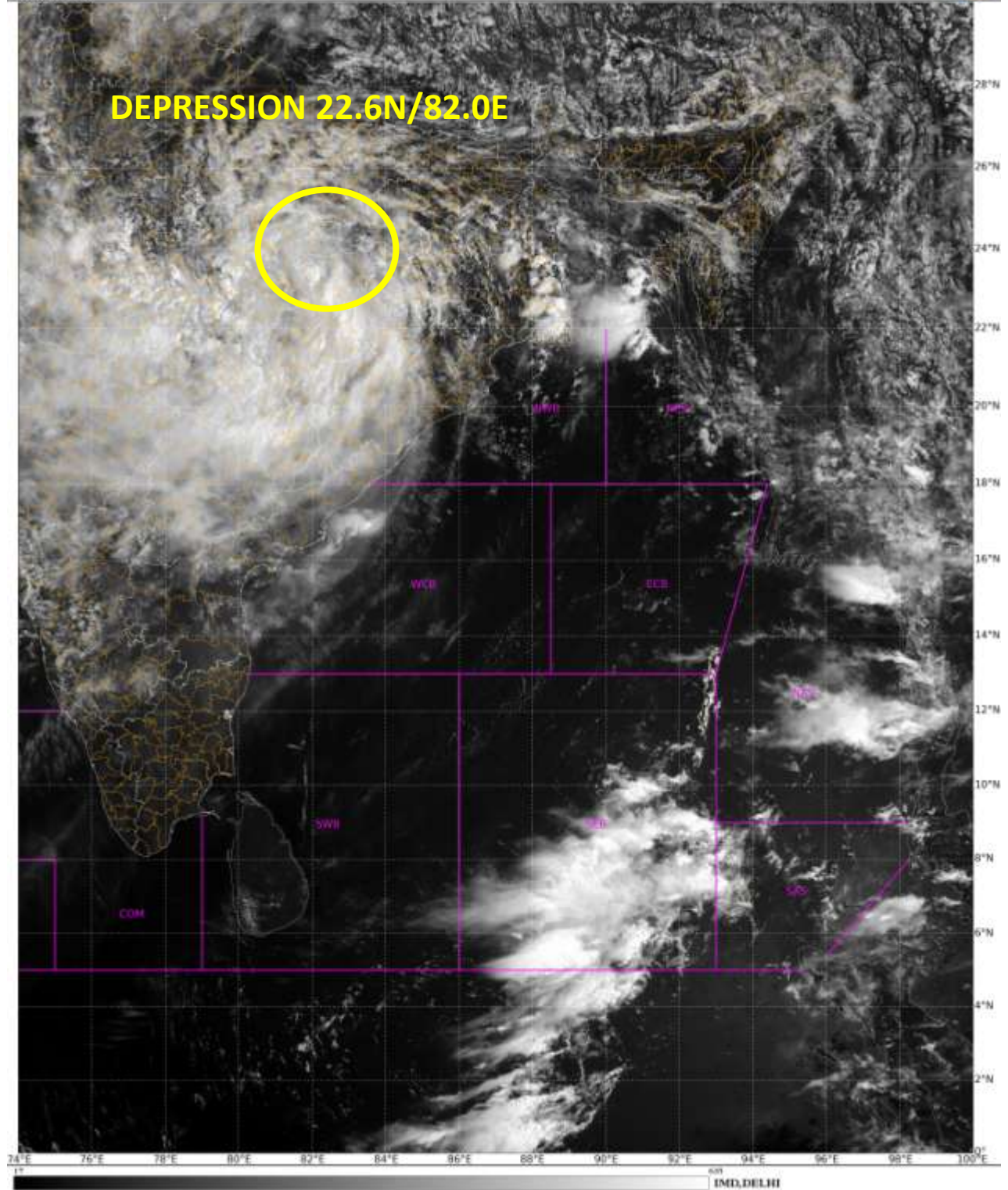
**OBSERVED AND FORECAST TRACK OF DEPRESSION OVER NORTHWEST CHHATTISGARH AND ADJOINING EAST MADHYA PRADESH BASED ON 0300 UTC OF 15<sup>th</sup> AUGUST, 2022**

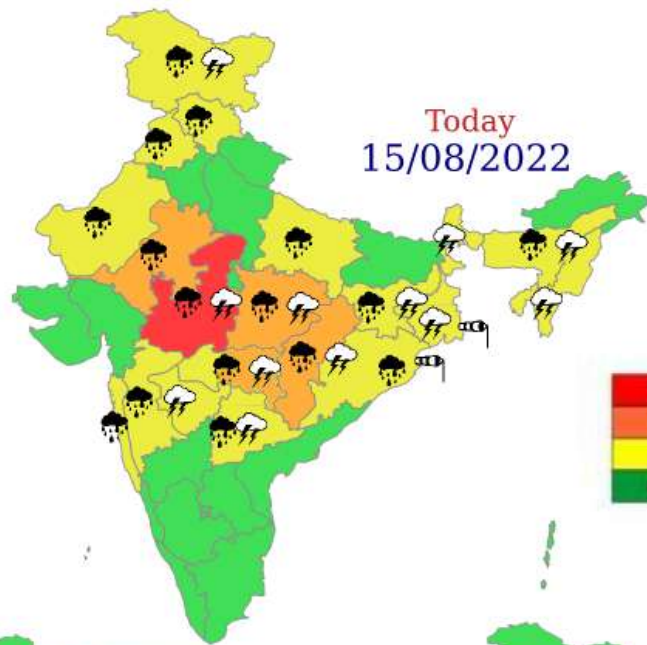


DATE/TIME IN UTC  
 IST=UTC + 0530  
 L: LOW PRESSURE AREA  
 WML: WELL MARKED LOW PRESSURE AREA  
 D: DEPRESSION (17-27 KT)  
 DD: DEEP DEPRESSION (28-33 KT)  
 CS: CYCLONIC STORM (34-47 KT)  
 SCS: SEVERE CYCLONIC STORM (48-63KT)  
 VSCS: VERY SEVERE CYCLONIC STORM (64-89 KT)  
 ESCS: EXTREMELY SEVERE CYCLONIC STORM (90-119 KT)  
 SuCS: SUPER CYCLONIC STORM ( $\geq 120$  KT)

-  LESS THAN 34 KT
-  34-47 KT
-   $\geq 48$  KT
-  OBSERVED TRACK
-  FORECAST TRACK
-  CONE OF UNCERTAINTY







**WARNING**

WARNING (TAKE ACTION)

ALERT (BE PREPARED)

WATCH (BE UPDATED)

NO WARNING (NO ACTION)



Heavy Rain



Heavy Snow



Thunderstorm



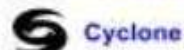
Dust Storm



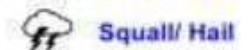
Strong Winds



Visibility



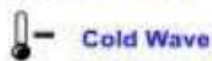
Cyclone



Squall/ Hail



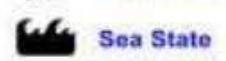
Frost



Cold Wave



Heat Wave



Sea State