



**India Meteorological Department
(Ministry of Earth Sciences)**

BULLETIN Number: 08 (BOB/03/2021)

TIME OF ISSUE: 0830 HOURS IST

DATED: 14.09.2021

FROM: INDIA METEOROLOGICAL DEPARTMENT (FAX NO. 24643965/24699216/24623220)

**TO: CONTROL ROOM, NDM, MINISTRY OF HOME AFFAIRS (FAX.NO. 23093750)
CONTROL ROOM NDMA (FAX.NO. 26701729)
CABINET SECRETARIAT (FAX.NO.23012284, 23018638)
PS TO HON'BLE MINISTER FOR S & T AND EARTH SCIENCES (FAX NO.23316745)
SECRETARY, MOES, (FAX NO. 24629777)
H.Q. (INTEGRATED DEFENCE STAFF AND CDS) (FAX NO. 23005137/23005147)
DIRECTOR GENERAL, DOORDARSHAN (23385843)
DIRECTOR GENERAL, AIR (23421105, 23421219)
PIB MOES (FAX NO. 23389042)
UNI (FAX NO. 23355841)
D.G. NATIONAL DISASTER RESPONSE FORCE (NDRF) (FAX NO. 26105912, 2436 3260)
DIRECTOR, PUNCTUALITY, INDIAN RAILWAYS (FAX NO. 23388503)
CHIEF SECRETARY, GOVT. OF ODISHA (FAX NO. 0674 -2536660)
CHIEF SECRETARY, GOVT. OF WEST BENGAL (FAX NO. 033-22144328)
CHIEF SECRETARY, ANDAMAN & NICOBAR ISLANDS (FAX NO. 03192- 232656)
CHIEF SECRETARY, ANDHRA PRADESH (FAX NO. 0863-2441029, 08645-246600)
CHIEF SECRETARY, JHARKHAND (FAX NO. 0651-2400255)
CHIEF SECRETARY, TELANGANA (FAX NO. 040-23453700)
CHIEF SECRETARY, CHATTISGARH (FAX NO 0771-2221206)
CHIEF SECRETARY, GOA (FAX NO. 0832-2415201)
CHIEF SECRETARY, MAHARASHTRA (FAX NO. FAX NO. 022- 22028594)
CHIEF SECRETARY, GUJARAT (FAX NO. 079-23250305)
CHIEF SECRETARY, MADHYA PRADESH (FAX NO. 0755-2441076)
CHIEF SECRETARY, RAJASTHAN (FAX NO. 141 2227114)**

Sub: Deep Depression over north interior Odisha & adjoining north Chhattisgarh

The Deep Depression over north interior Odisha moved further west-northwestwards during past 6 hours with a speed of 21 kmph and lay centred at 0530 hrs IST of today, the 14th September, 2021, over north interior Odisha & adjoining north Chhattisgarh, near latitude 22.0°N and longitude 83.6°E, about 50 km west-northwest of Jharsiguda (Odisha) and about 130 km south-southeast of Ambikapur (Chhattisgarh).

It is very likely to continue to move west-northwestwards across north Chhattisgarh & Madhya Pradesh during next 48 hours. It is very likely to weaken into a Depression during the next 06 hours.

Warnings:

(i) Rainfall

- **14th September:** Light to moderate rainfall at most places: with heavy to very heavy rainfall at isolated places likely over Chattisgarh, Madhya Pradesh, south Gujarat Region & Saurashtra and heavy rainfall at isolated places over north Konkan, north Madhya

Maharashtra, Marathawada, Vidharbha, East Rajasthan, Odisha, Jharkhand and Gangetic West Bengal.

- **15th September:** Light to moderate rainfall at most places: with isolated heavy to very heavy & extremely heavy falls at isolated places very likely over Gujarat State & West Madhya Pradesh; very heavy rainfall at isolated places over East Madhya Pradesh & East Rajasthan and heavy rainfall at isolated places over north Konkan.
- **16th September:** Light to moderate rainfall at most places: with isolated heavy to very heavy rainfall very likely over Gujarat State, east Rajasthan & West Madhya Pradesh; heavy rainfall at isolated places over East Madhya Pradesh and north Konkan.

(ii) EXPECTED IMPACT & ACTION SUGGESTED: Due to very Heavy/Extremely heavy Rainfall over Gujarat state, Chhattisgarh, Madhya Pradesh & east Rajasthan.

A. Impact Expected

- Localized Flooding of roads, inundation and water logging in low lying areas and closure of underpasses mainly in urban areas of the above region.
- Occasional reduction in visibility due to heavy rainfall.
- Disruption of traffic in major cities due to water logging in roads leading to increased travel time.
- Minor damage to kutchra roads. Possibilities of damage to vulnerable structure.
- Localized Landslides/Mudslides
- Damage to horticulture and standing crops in some areas due to inundation and strong winds.
- It may lead to riverine flooding in some river catchments (for riverine flooding please visit Web page of Central Water Commission)

B. Action Suggested

- Check for traffic congestion on your route before leaving for your destination.
- Follow any traffic advisories that are issued in this regard.
- Avoid going to areas that face the water logging problems often.
- Avoid staying in vulnerable structure.
- Follow IMD warnings for updates

The next bulletin will be issued at 1130 hrs IST of 14th September, 2021.

(Sunitha Devi)
Scientist-F, RSMC, New Delhi

Copy to: ACWC Kolkata/ Chennai/Mumbai CWC Bhubaneswar/CWC Visakhapatnam/CWC Ahmedabad/ MC Ranchi/MC Hyderabad/MC Raipur/MC Goa/MC Bhopal

<p>LEGEND: Heavy Rainfall: 64.5 to 115.5mm, Very Heavy Rainfall: 115.6 to 204.4mm, Extremely Heavy Rainfall: 204.5mm or more. Many Places: 51% to 75% of the stations, Most Places: more than 76% of total stations, Isolated Places: Less than 25% of total stations</p>



OBSERVED AND FORECAST TRACK OF DEEP DEPRESSION OVER NORTH INTERIOR ODISHA AND ADJOINING NORTH CHHATTISGARH BASED ON 0000 UTC OF 14TH SEPTEMBER, 2021



DATE/TIME IN UTC
IST=UTC + 0530
L: LOW PRESSURE AREA
WML: WELL MARKED LOW PRESSURE AREA
D: DEPRESSION (17-27 KT)
DD: DEEP DEPRESSION (28-33 KT)
CS: CYCLONIC STORM (34-47 KT)
SCS: SEVERE CYCLONIC STORM (48-63KT)
VSCS: VERY SEVERE CYCLONIC STORM (64-89 KT)
ECS: EXTREMELY SEVERE CYCLONIC STORM (90-119 KT)
SuCS: SUPER CYCLONIC STORM (≥ 120 KT)

-  LESS THAN 34 KT
-  34-47 KT
-  ≥ 48 KT
-  OBSERVED TRACK
-  FORECAST TRACK
-  CONE OF UNCERTAINTY

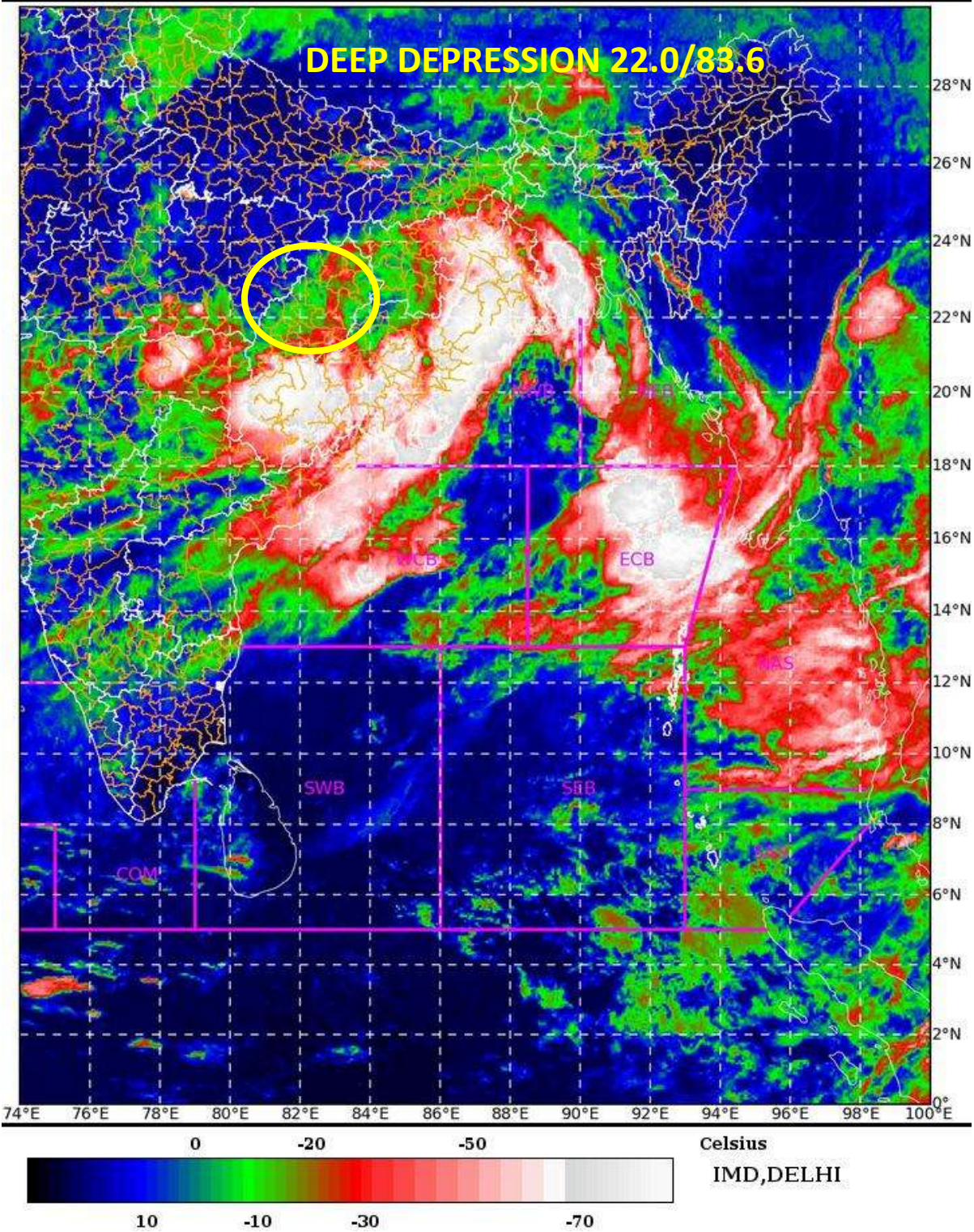
SAT : INSAT-3D IMG

14-09-2021/(0200 to 0226) GMT

IMG_TIR1_TEMP 10.8 um

14-09-2021/(0730 to 0756) IST

L1C Mercator



Meteorological Sub-division level heavy rainfall warning

