



**India Meteorological Department  
(Ministry of Earth Sciences)**

**BULLETIN NO. 11 (BOB/08/2022)**

**TIME OF ISSUE: 0815HOURS IST**

**DATED: 22.11.2022**

**FROM: INDIA METEOROLOGICAL DEPARTMENT (FAX NO. 24643965/24699216/24623220)**

**TO: CONTROL ROOM, NDM, MINISTRY OF HOME AFFAIRS (FAX.NO. 23093750)**

**CONTROL ROOM NDMA (FAX.NO. 26701729)**

**CABINET SECRETARIAT (FAX.NO.23012284, 23018638)**

**PS TO HON'BLE MINISTER FOR S & T AND EARTH SCIENCES (FAX NO.23316745)**

**SECRETARY, MOES (FAX NO. 24629777)**

**H.Q. (INTEGRATED DEFENCE STAFF AND CDS) (FAX NO. 23005137/23005147)**

**DIRECTOR GENERAL, DOORDARSHAN (23385843)**

**DIRECTOR GENERAL, AIR (23421105, 23421219)**

**PIB MOES (FAX NO. 23389042)**

**UNI (FAX NO. 23355841)**

**D.G. NATIONAL DISASTER RESPONSE FORCE (NDRF) (FAX NO. 26105912, 2436 3260)**

**DIRECTOR, PUNCTUALITY, INDIAN RAILWAYS (FAX NO. 23388503)**

**CHIEF SECRETARY, ANDAMAN & NICOBAR ISLANDS (FAX NO. 03192- 232656)**

**CHIEF SECRETARY, GOVT. OF ANDHRA PRADESH (FAX NO. 0863-2441029, 08645-246600)**

**CHIEF SECRETARY, GOVT. OF TAMIL NADU (FAX NO. 044-25672304)**

**CHIEF SECRETARY, GOVT. OF PUDUCHERRY (FAX NO. 0413-2337575, 2334145)**

**Sub: Depression over Westcentral and adjoining Southwest Bay of Bengal**

The Depression over Southwest and adjoining Westcentral Bay of Bengal moved west-northwestwards with a speed of 6 kmph during past 6 hours and lay centred at 0530 hours IST of today, the 22<sup>nd</sup> November, 2022 over Westcentral and adjoining Southwest Bay of Bengal, near latitude 13.1° N and longitude 81.4° E, about 130 km east-northeast of Chennai, 210 km southeast of Nellore and 340 km south-southeast of Machilipatnam.

Continuing to move west-northwestwards towards south Andhra Pradesh-North Tamilnadu-Puducherry coasts, it is likely to weaken into a well-marked low pressure area during next 6 hours.

**Warnings:**

**(i) Rainfall (warning graphics enclosed)**

- ❖ Light to moderate rainfall at many places with isolated heavy rainfall is very likely over south coastal Andhra Pradesh & adjoining areas of Rayalaseema and north Tamil Nadu on 22<sup>nd</sup> November and light to moderate rainfall at a few places over North coastal Andhra Pradesh during the same period.
- ❖ Light to moderate rainfall at many places is likely over North Tamil Nadu-Puducherry, South Coastal Andhra Pradesh and Rayalaseema on 23<sup>rd</sup> November.

**(ii) Wind warning:**

- ❖ **Squally wind speed reaching 45-55 kmph gusting to 65 kmph is likely to prevail over Southwest and adjoining Westcentral Bay of Bengal and along & off Andhra**

Pradesh, Tamil Nadu, Puducherry and Sri Lanka coasts during next 6 hours and decrease gradually thereafter becoming 30-40 kmph gusting 50 kmph by 23<sup>rd</sup> November morning.

- ❖ **Squally weather with wind speed reaching 40-45 kmph gusting to 55 kmph is likely to prevail over Gulf of Mannar on 22<sup>nd</sup> November and decrease gradually thereafter.**

**(iii) Sea condition**

- ❖ **Sea condition will be rough to very rough over Southwest and adjoining Westcentral Bay of Bengal and along & off Andhra Pradesh, Tamil Nadu, Puducherry, Sri Lanka coasts during next 6 hours and improve gradually thereafter becoming rough to moderate by 23<sup>rd</sup> November morning.**
- ❖ **Sea condition will be rough over Gulf of Mannar on 22<sup>nd</sup> November and improve gradually thereafter.**

**(iv) Fishermen Warning**

**Fishermen are advised not to venture into Southwest and adjoining Westcentral Bay of Bengal, Gulf of Mannar and along & off Andhra Pradesh, Tamil Nadu, Puducherry, Sri Lanka coasts till 22<sup>nd</sup> November.**

**The system is under continuous surveillance and the next message will be issued at 1130 hours IST of today, the 22<sup>nd</sup> November, 2022.**

**(R.K. Jenamani)**  
**Scientist - F, Cyclone Warning Division, New Delhi**

*Copy to: ACWC Kolkata/ ACWC Chennai/ CWC Bhubaneswar/CWCVisakhapatnam/MO Port Blair*

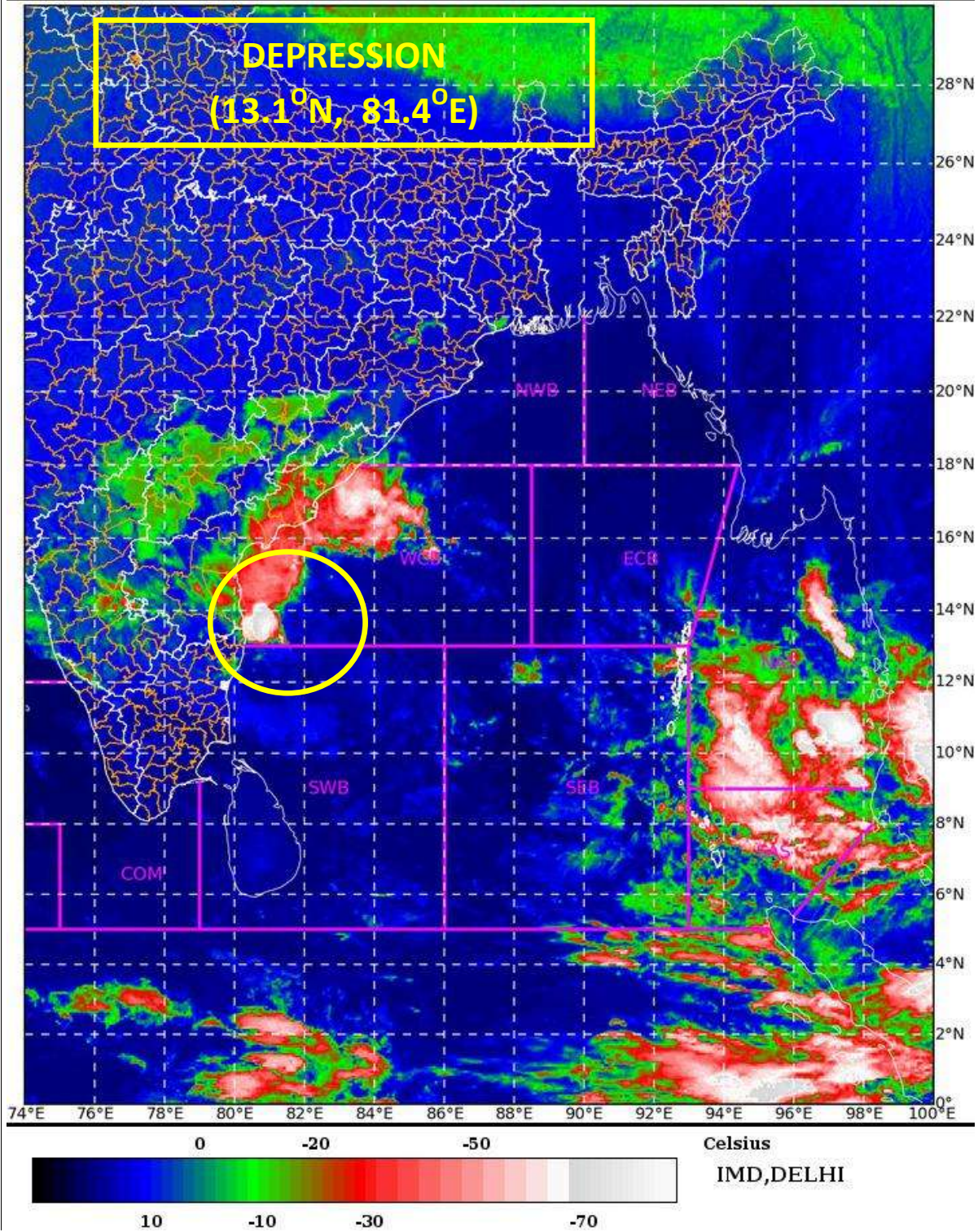
**LEGEND: Heavy Rainfall: 64.5 to 115.5mm, Very Heavy Rainfall: 115.6 to 204.4mm Most Places: more than 76% of total stations, Isolated Places: Less than 25% of total**

SAT : INSAT-3D IMG 22-11-2022/(0130 to 0156) GMT

IMG\_TIR1\_TEMP 10.8 um 22-11-2022/(0700 to 0726) IST



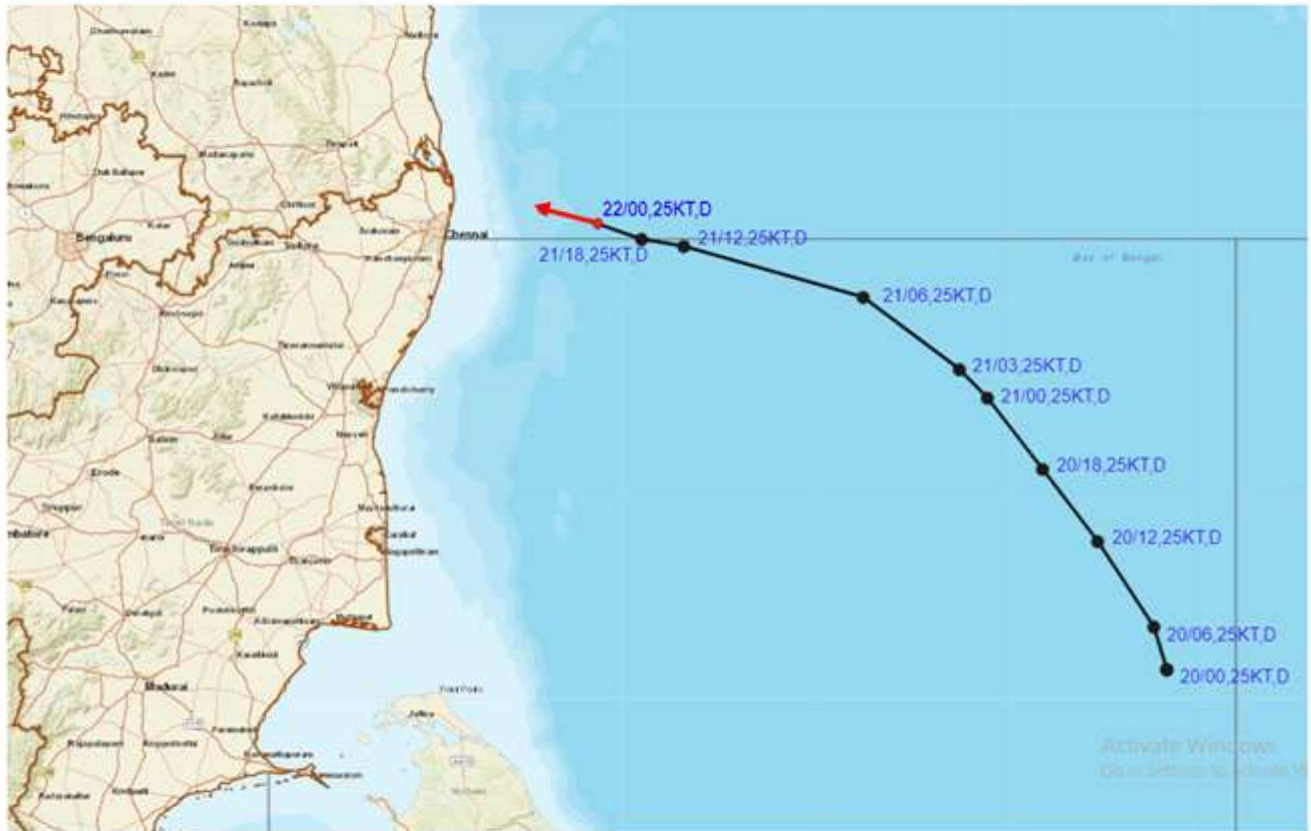
L1C Mercator





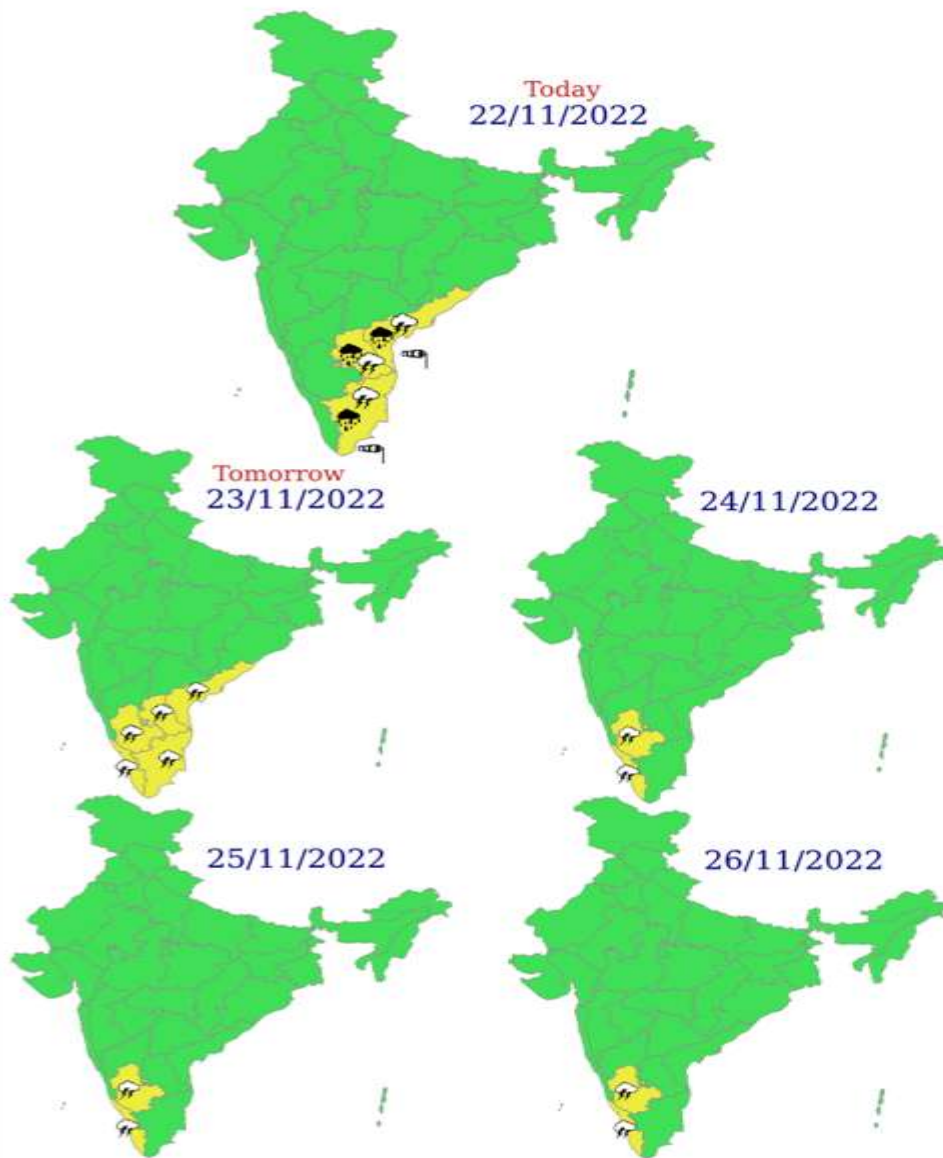


## OBSERVED AND FORECAST TRACK OF DEPRESSION OVER WESTCENTRAL AND ADJOINING SOUTHWEST BAY OF BENGAL BASED ON 0000 UTC OF 22nd NOVEMBER, 2022



DATE/TIME IN UTC  
IST=UTC + 0530  
L: LOW PRESSURE AREA  
WML: WELL MARKED LOW PRESSURE AREA  
D: DEPRESSION (17-27 KT)  
DD: DEEP DEPRESSION (28-33 KT)  
CS: CYCLONIC STORM (34-47 KT)  
SCS: SEVERE CYCLONIC STORM (48-63KT)  
VSCS: VERY SEVERE CYCLONIC STORM (64-89 KT)  
ESCS: EXTREMELY SEVERE CYCLONIC STORM (90-119 KT)  
SuCS: SUPER CYCLONIC STORM (120 KT)

-  LESS THAN 34 KT
-  34-47 KT
-  ≥ 48 KT
-  OBSERVED TRACK
-  FORECAST TRACK
-  CONE OF UNCERTAINTY



### WARNING



- |  |  |  |  |
|--|--|--|--|
|  Heavy Rain   |  Heavy Snow |  Thunderstorm |  Dust Storm   |
|  Strong Winds |  Visibility |  Cyclone      |  Squall/ Hail |
|  Frost        |  Cold Wave  |  Heat Wave    |  Sea State    |

## Fishermen warning graphics



Squally weather with wind speed 40-45 kmph gusting to 55 kmph

Squally wind speed with wind speed 45-55 kmph gusting to 65 kmph

**Fishermen are advised not to venture into the marked areas.**