



**India Meteorological Department  
(Ministry of Earth Sciences)**

**BULLETIN NO. 20 (BOB/07/2022)**

**TIME OF ISSUE: 1145 HOURS IST**

**DATED: 25.10.2022**

**FROM: INDIA METEOROLOGICAL DEPARTMENT (FAX NO. 24643965/24699216/24623220)**

**TO: CONTROL ROOM, NDM, MINISTRY OF HOME AFFAIRS (FAX.NO. 23093750)**

**CONTROL ROOM NDMA (FAX.NO. 26701729)**

**CABINET SECRETARIAT (FAX.NO.23012284, 23018638)**

**PS TO HON'BLE MINISTER FOR S & T AND EARTH SCIENCES (FAX NO.23316745)**

**SECRETARY, MOES (FAX NO. 24629777)**

**H.Q. (INTEGRATED DEFENCE STAFF AND CDS) (FAX NO. 23005137/23005147)**

**DIRECTOR GENERAL, DOORDARSHAN (23385843)**

**DIRECTOR GENERAL, AIR (23421105, 23421219)**

**PIB MOES (FAX NO. 23389042)**

**UNI (FAX NO. 23355841)**

**D.G. NATIONAL DISASTER RESPONSE FORCE (NDRF) (FAX NO. 26105912, 2436 3260)**

**DIRECTOR, PUNCTUALITY, INDIAN RAILWAYS (FAX NO. 23388503)**

**CHIEF SECRETARY, GOVT. WEST BENGAL (FAX NO. 033-22144328)**

**CHIEF SECRETARY, GOVT. OF ASSAM (FAX NO. 0361-2237200)**

**CHIEF SECRETARY, GOVT. OF MEGHALAYA (FAX NO. 0364-2225978)**

**CHIEF SECRETARY, GOVT. OF NAGALAND (FAX NO. 0370-2270057)**

**CHIEF SECRETARY, GOVT. OF MIZORAM (FAX NO. 0389 2322745)**

**CHIEF SECRETARY, GOVT. OF MANIPUR (FAX NO. NA)**

**CHIEF SECRETARY, GOVT. OF TRIPURA (FAX NO. 0381-2414013/ 2351122)**

**CHIED SECRETARY, GOVT. OF ARUNACHAL PRADESH (FAX NO. 0360-2212466, 2215719)**

**Sub: Depression weakened into a Well Marked Low Pressure Area over northeast Bangladesh and adjoining Meghalaya.**

The Depression over northeast Bangladesh and neighborhood moved north-northeastward and further weakened into a **Well Marked Low Pressure Area** and lay centered over **northeast Bangladesh and adjoining Meghalaya** at 0830 hrs IST of today, the 25<sup>th</sup> October. It is very likely to continue to move north-northeastwards and weaken into a low pressure area during next 06 hours.

**Warnings:**

**(i) Rainfall (warning graphics enclosed):**

Light to moderate rainfall at most places with isolated **heavy to very heavy rainfall** is very likely over Arunachal Pradesh, northeast Assam and isolated **heavy rainfall** over remaining parts of Assam, Meghalaya and Nagaland today, the 25<sup>th</sup> October.

Light to moderate rainfall at many places is very likely over Manipur, Mizoram & Tripura during next 12 hours and reduce thereafter.

**(ii) Wind warning:**

**Strong wind** speed reaching 25-35 kmph gusting to 45 kmph is very likely to prevail over northeast Bangladesh, Meghalaya, Assam, Arunachal Pradesh, Manipur, Nagaland, Mizoram & Tripura during next 12 hours and reduce thereafter.

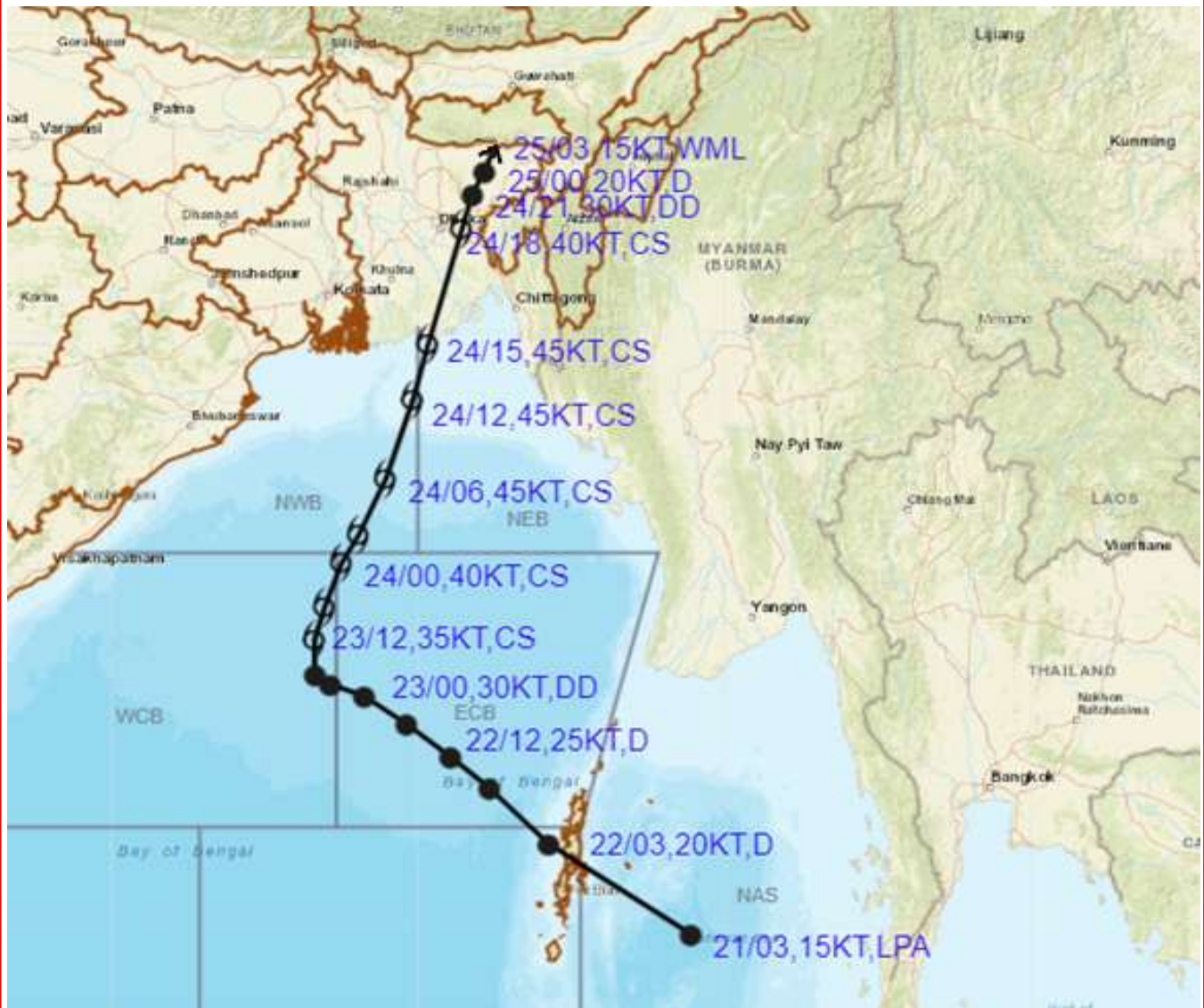
***This is the last Bulletin pertaining to this System. However, Regular weather Bulletins will continue from the National Weather Forecasting Centre, New Delhi, RMC Kolkata and RMC Guwahati in association with the Low Pressure System.***

**(R. K. Jenamani)  
Scientist- F, Cyclone Warning Division, New Delhi**

***Copy to: ACWC Kolkata/ ACWC Chennai/ CWC Bhubaneswar/CWCVisakhapatnam/MO Port Blair*** **LEGEND: Heavy Rainfall:** 64.5 to 115.5mm, **Very Heavy Rainfall:** 115.6 to 204.4mm **Most Places:** more than 76% of total stations, **Isolated Places:** Less than 25% of total



## OBSERVED TRACK OF CYCLONIC STORM "SITRANG" DURING 22<sup>ND</sup>-25<sup>TH</sup> OCTOBER, 2022



DATE/TIME IN UTC

IST=UTC + 0530

L: LOW PRESSURE AREA

WML: WELL MARKED LOW PRESSURE AREA

D: DEPRESSION (17-27 KT)

DD: DEEP DEPRESSION (28-33 KT)

CS: CYCLONIC STORM (34-47 KT)

SCS: SEVERE CYCLONIC STORM (48-63KT)

VSCS: VERY SEVERE CYCLONIC STORM (64-89 KT)

ESCS: EXTREMELY SEVERE CYCLONIC STORM (90-119 KT)

SuCS: SUPER CYCLONIC STORM ( $\geq 120$  KT)



LESS THAN 34 KT



34-47 KT



$\geq 48$  KT



OBSERVED TRACK



FORECAST TRACK



CONE OF UNCERTAINTY



SAT : INSAT-3D IMG

25-10-2022/(0530 to 0557) GMT

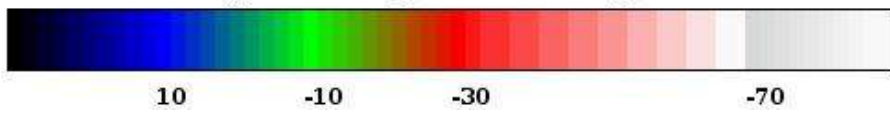
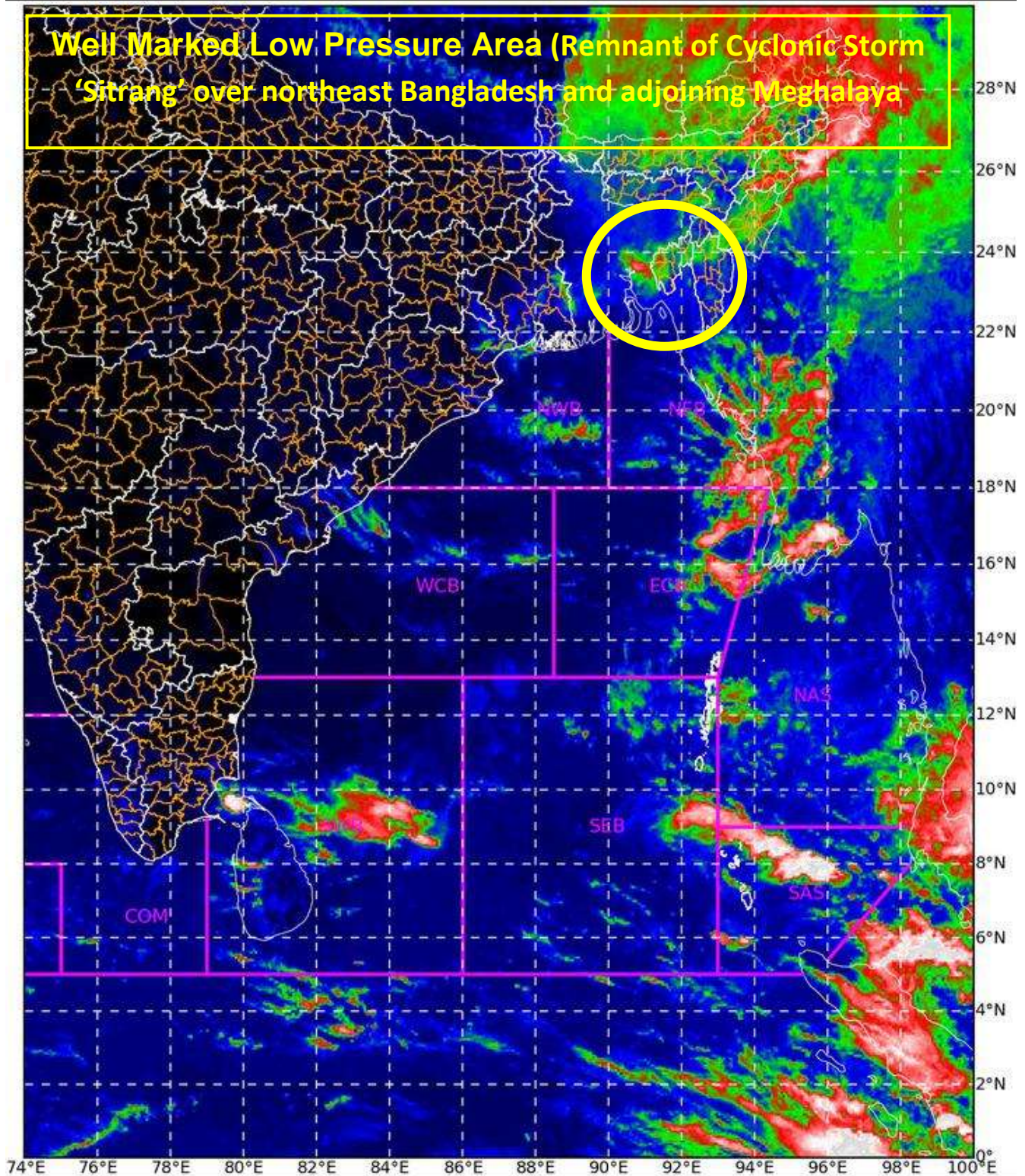
IMG\_TIR1\_TEMP 10.8 um

25-10-2022/(1100 to 1127) IST

L1C Mercator

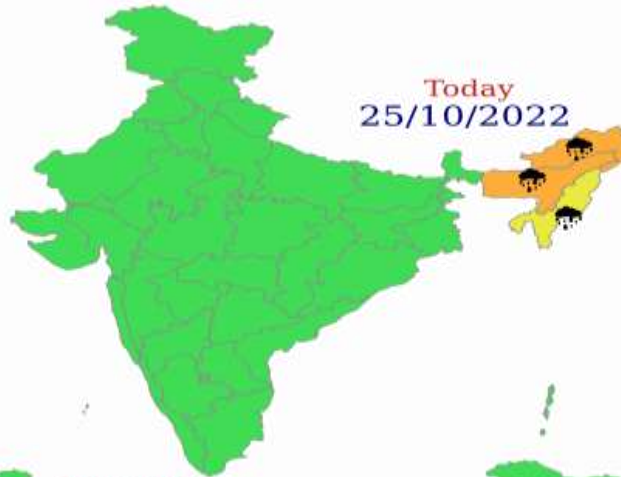


**Well Marked Low Pressure Area (Remnant of Cyclonic Storm 'Sitrang' over northeast Bangladesh and adjoining Meghalaya**



Celsius  
IMD, DELHI





**WARNING**

|                         |
|-------------------------|
| WARNING (TAKE ACTION)   |
| ALERT ( BE PREPARED)    |
| WATCH (BE UPDATED)      |
| NO WARNING ( NO ACTION) |



|  |              |  |            |  |              |  |              |
|--|--------------|--|------------|--|--------------|--|--------------|
|  | Heavy Rain   |  | Heavy Snow |  | Thunderstorm |  | Dust Storm   |
|  | Strong Winds |  | Visibility |  | Cyclone      |  | Squall/ Hail |
|  | Frost        |  | Cold Wave  |  | Heat Wave    |  | Sea State    |