



**India Meteorological Department
(Ministry of Earth Sciences)**

BULLETIN NO.11 (BOB/02/2022)

TIME OF ISSUE: 0800 HOURS IST

DATED: 22.03.2022

FROM: INDIA METEOROLOGICAL DEPARTMENT (FAX NO. 24643965/24699216/24623220)

TO: CONTROL ROOM, NDM, MINISTRY OF HOME AFFAIRS (FAX.NO. 23093750)

CONTROL ROOM NDMA (FAX.NO. 26701729)

CABINET SECRETARIAT (FAX.NO.23012284, 23018638)

PS TO HON'BLE MINISTER FOR S & T AND EARTH SCIENCES (FAX NO.23316745)

SECRETARY, MOES (FAX NO. 24629777)

H.Q. (INTEGRATED DEFENCE STAFF AND CDS) (FAX NO. 23005137/23005147)

DIRECTOR GENERAL, DOORDARSHAN (23385843)

DIRECTOR GENERAL, AIR (23421105, 23421219)

PIB MOES (FAX NO. 23389042)

UNI (FAX NO. 23355841)

D.G. NATIONAL DISASTER RESPONSE FORCE (NDRF) (FAX NO. 26105912, 2436 3260)

DIRECTOR GENERAL INDIAN COAST GUARD, FAX NO. 011-23383196

DIRECTOR, PUNCTUALITY, INDIAN RAILWAYS (FAX NO. 23388503)

ADMINISTRATOR, ANDAMAN & NICOBAR ISLANDS (FAX NO. 03192- 232656)

CHIEF SECRETARY, TAMIL NADU (FAX NO 044-25672304)

CHIEF SECRETARY, PUDUCHERRY (FAX NO 0413-2334145)

CHIEF SECRETARY, ANDHRA PRADESH (FAX NO. 0863-2441029, 08645-246600)

CHIEF SECRETARY, ODISHA (FAX NO. 0674-2536660)

CHIEF SECRETARY, WEST BENGAL (FAX NO. 033-22144328)

Subject: Deep Depression over north Andaman Sea and adjoining areas of eastcentral Bay of Bengal

The Deep Depression over north Andaman Sea and adjoining areas of eastcentral & southeast Bay of Bengal, moved northwards with a speed of 16 kmph during last 06 hours, and lay centered at 0530 hours IST of today, the 22nd March, over north Andaman Sea and adjoining areas of eastcentral Bay of Bengal near latitude 14.9°N and longitude 94.1°E, about 250 km north-northeast of Mayabundar (Andaman Islands), 390 km north-northeast of Port Blair (Andaman Islands), 300 km southwest of Yangon (Myanmar) and 400 km south of Thandwe (Myanmar).

It would continue to move nearly northwards away from Andaman Islands, weaken gradually and cross Myanmar coast as a deep depression between latitude 16°N & 18°N around afternoon of 22nd March.

Forecast track and intensity are given in the following table:

Date/Time (IST)	Position (Lat. °N/ Long. °E)	Maximum Sustained Surface Wind speed (kmph)	Category of Cyclonic Disturbance
22.03.22/0530	14.9/94.1	55-65 gusting to 75	Deep Depression
22.03.22/1130	15.8/94.2	50-60 gusting to 70	Deep Depression
22.03.22/1730	16.7/94.4	45-55 gusting to 65	Depression

Warnings:

(i) Rainfall (warning graphics enclosed)

No heavy rainfall for Andaman Islands during 22nd March with light to moderate rainfall at a few places over the same region.

(ii) Wind warning

22nd March: squally winds speed reaching 55-65 kmph gusting to 75 kmph prevails over north Andaman Sea & adjoining eastcentral Bay of Bengal and along & off Myanmar coast and north Andaman Islands. It is likely to decrease gradually becoming 45-55 kmph gusting to 65 kmph along and off Myanmar coast and adjoining east central Bay of Bengal and north Andaman Sea from 22nd afternoon for subsequent 12 hours.

(iii) Sea condition

- **22nd March:** Sea condition is very likely to become rough to very rough over north Andaman Sea & adjoining eastcentral Bay of Bengal, along and off north Andaman islands & along and off Myanmar coast during next 24 hours.

(iv) Fishermen Warning (Graphics enclosed)

Fishermen are advised not to venture

- Into Andaman Sea, along & off Andaman Islands and along & off Myanmar coast during 22nd March.
- Into eastcentral Bay of Bengal during 22nd March

Next bulletin will be issued at 1130 hours IST of 22rd March, 2022.

(R K Jenamani)
Scientist-F, RSMC, New Delhi

Copy to: ACWC Kolkata/ ACWC Chennai/ CWC Bhubaneswarr/CWC Vishakhapatnam/MO Port Blair

LEGEND: Heavy Rainfall: 64.5 to 115.5mm, **Very Heavy Rainfall:** 115.6 to 204.4mm **Most Places:** more than 76% of total stations, **Isolated Places:** Less than 25% of total

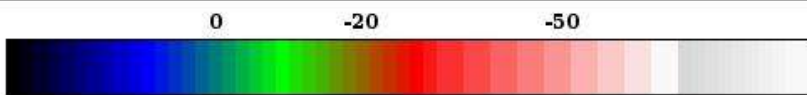
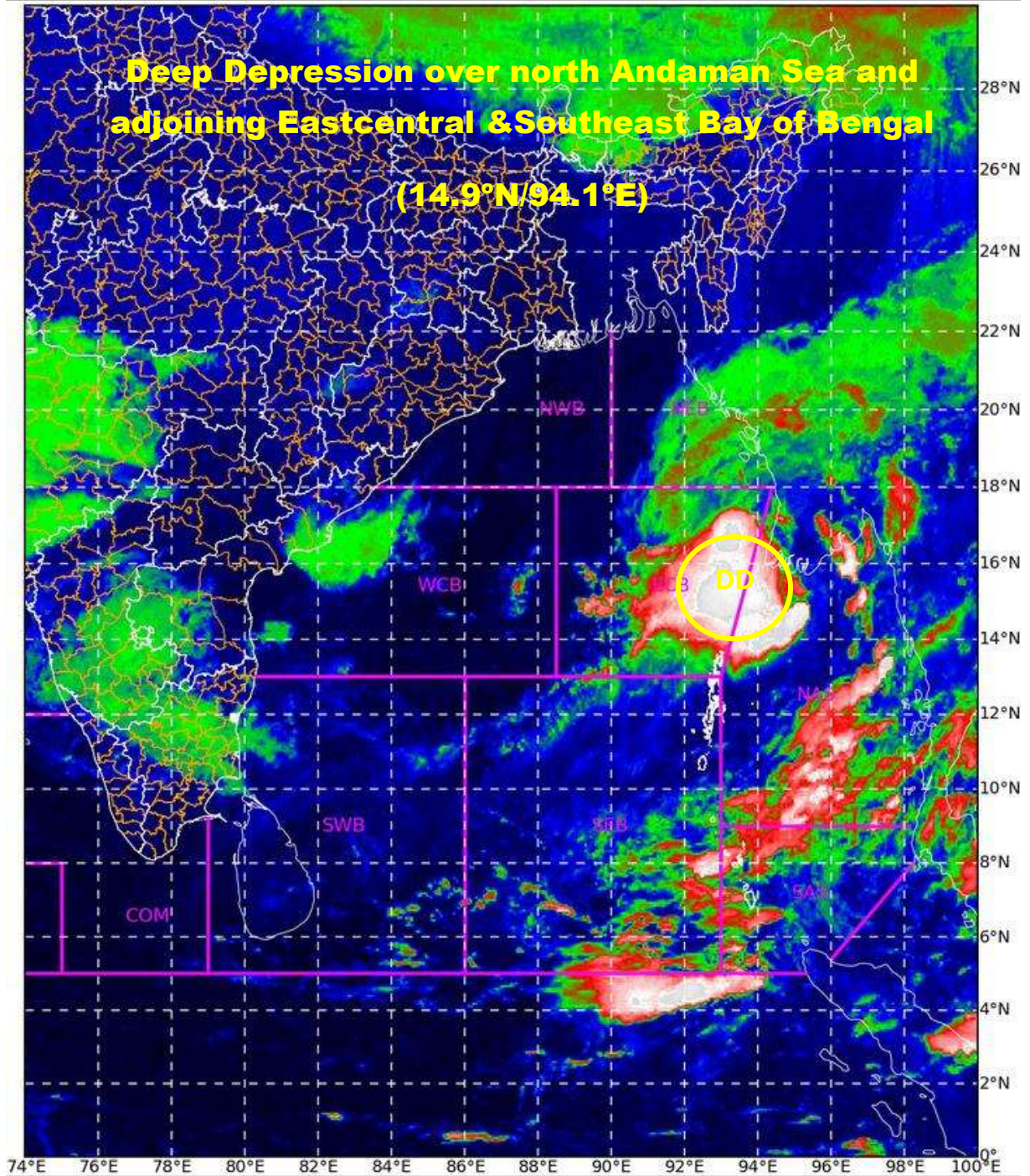
SAT : INSAT-3D IMG

22-03-2022/(0030 to 0056) GMT

IMG_TIR1_TEMP 10.8 um

22-03-2022/(0600 to 0626) IST

L1C Mercator

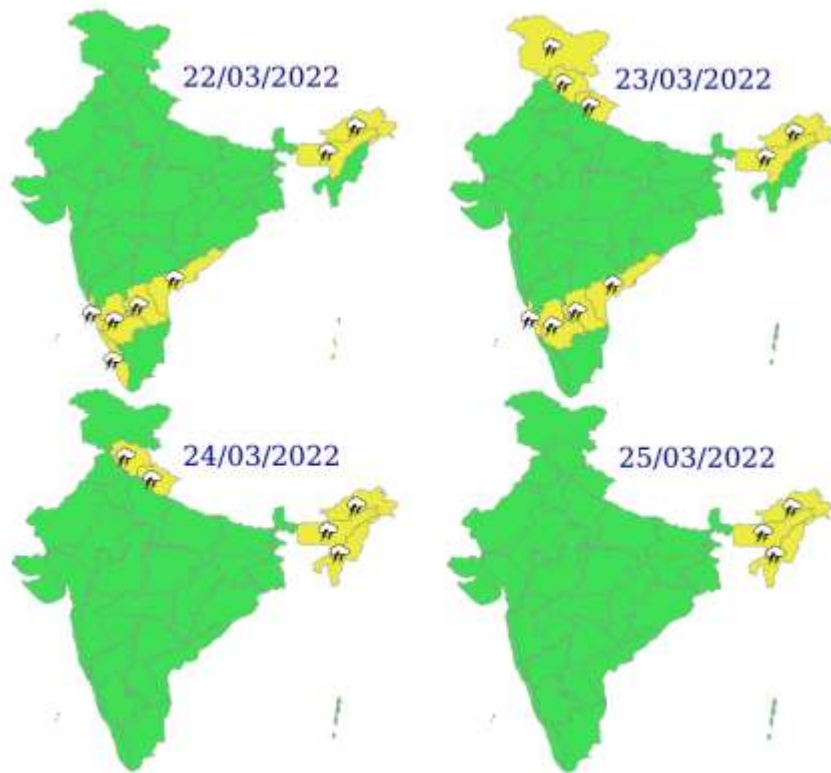


Celsius
IMD, DELHI

10 -10 -30 -70

DD: DEEP DEPRESSION

Rainfall Warning Graphics

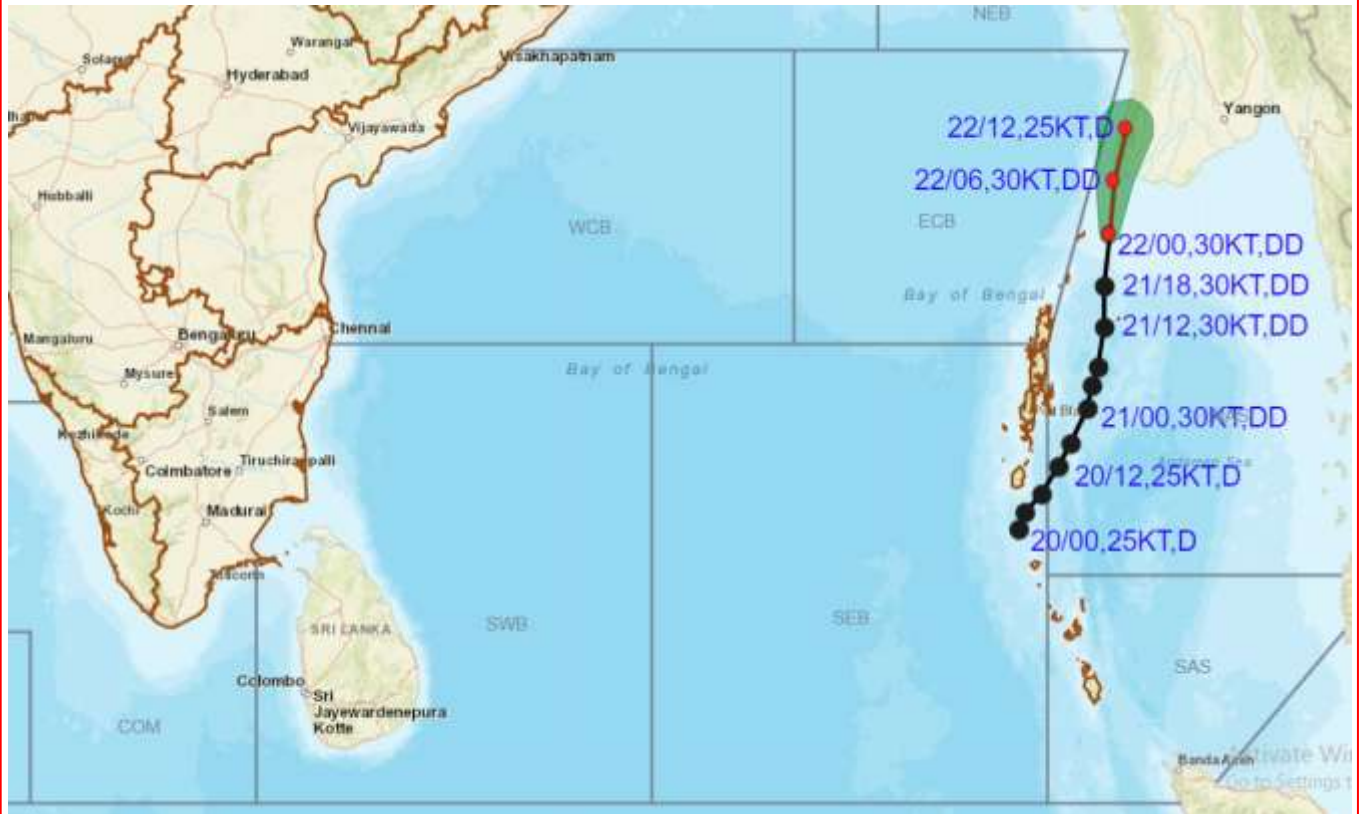


WARNING	
WARNING (TAKE ACTION)	Red
ALERT (BE PREPARED)	Orange
WATCH (BE UPDATED)	Yellow
NO WARNING (NO ACTION)	Green





OBSERVED AND FORECAST TRACK ALONGWITH CONE OF UNCERTAINTY OF DEEP DEPRESSION OVER NORTH ANDAMAN SEA AND ADJOINING AREAS OF EASTCENTRAL BAY OF BENGAL BASED ON 0000 UTC OF 22nd MARCH 2022



DATE/TIME IN UTC
 IST=UTC + 0530
 L: LOW PRESSURE AREA
 WML: WELL MARKED LOW PRESSURE AREA
 D: DEPRESSION (17-27 KT)
 DD: DEEP DEPRESSION (28-33 KT)
 CS: CYCLONIC STORM (34-47 KT)
 SCS: SEVERE CYCLONIC STORM (48-63KT)
 VSCS: VERY SEVERE CYCLONIC STORM (64-89 KT)
 ESCS: EXTREMELY SEVERE CYCLONIC STORM (90-119 KT)
 SuCS: SUPER CYCLONIC STORM (\geq 120 KT)

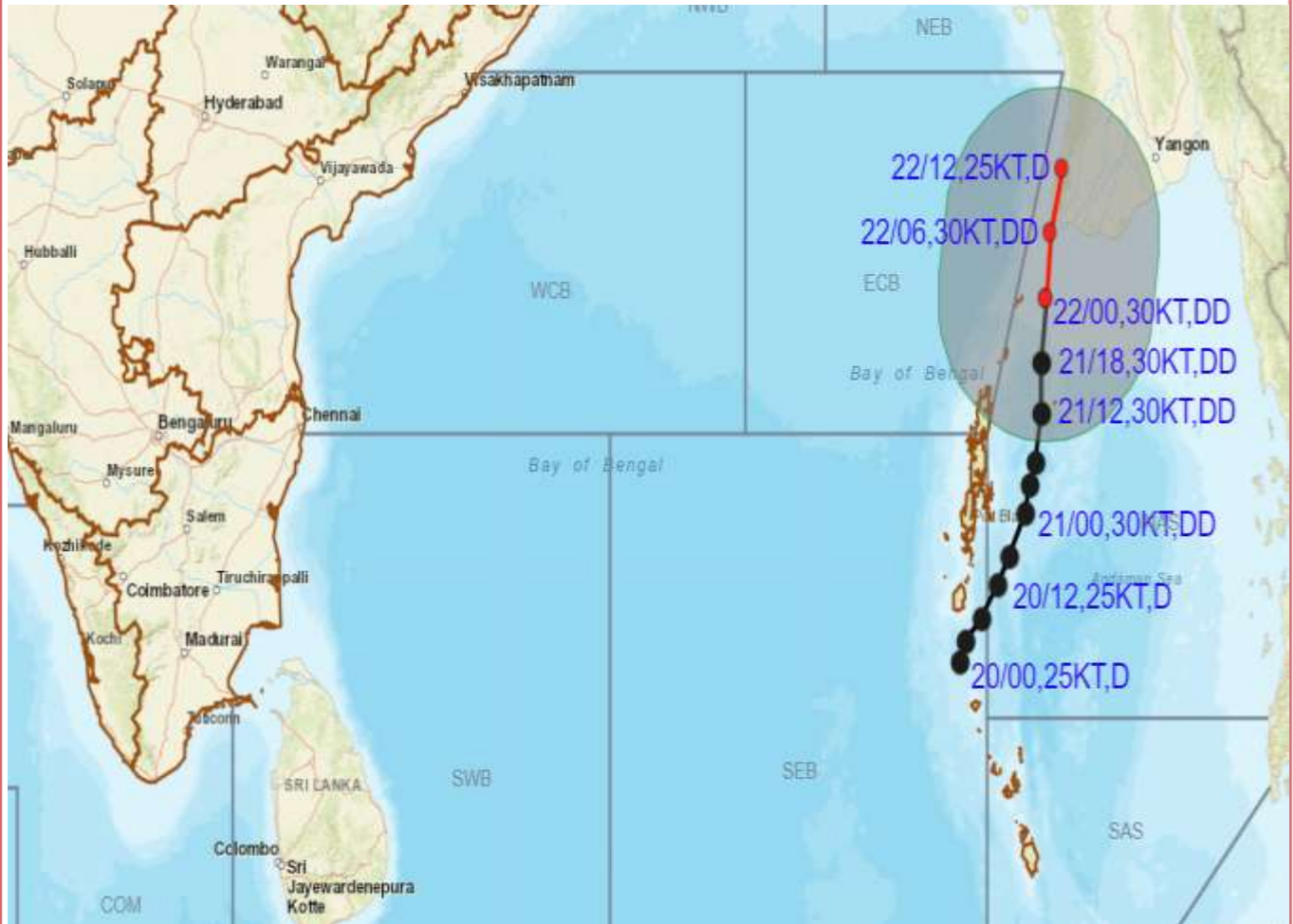
- LESS THAN 34 KT
- 34-47 KT
- \geq 48 KT
- OBSERVED TRACK
- FORECAST TRACK
- CONE OF UNCERTAINTY

STATIONS	DISTANCE(KM) AND DIRECTION FROM STATIONS	
	22.03.22/0000	22.03.22/1200
Yangon	300,SW	190,W
Tandwe	400,S	200,S
Hut bay	510,NNE	710,NNE
Portblair	390,NNE	590,NNE
Maya bundar	260,NNE	450,NNE

N:NORTH, NNE:NORTH-NORTHEAST, NE:NORTHEAST, ENE:EAST-NORTHEAST, E:EAST, SE:SOUTHEAST, SSE:SOUTH-SOUTHEAST, S:SOUTH, SSW:SOUTH-SOUTHWEST, SW:SOUTHWEST, WSW:WEST-SOUTHWEST, W:WEST, WNW:WEST-NORTHWEST, NW:NORTHWEST, NNW:NORTH-NORTHWEST



OBSERVED AND FORECAST TRACK ALONGWITH QUADRANT WIND DISTRIBUTION OF DEEP DEPRESSION OVER NORTH ANDAMAN SEA AND ADJOINING AREAS OF EASTCENTRAL BAY OF BENGAL BASED ON 0000 UTC OF 22nd MARCH 2022



DATE/TIME IN UTC

IST=UTC + 0530

L: LOW PRESSURE AREA

WML: WELL MARKED LOW PRESSURE AREA

D: DEPRESSION (17-27 KT)

DD: DEEP DEPRESSION (28-33 KT)

CS: CYCLONIC STORM (34-47 KT)

SCS: SEVERE CYCLONIC STORM (48-63KT)

VSCS: VERY SEVERE CYCLONIC STORM (64-89 KT)

ESCS: EXTREMELY SEVERE CYCLONIC STORM (90-119 KT)

SuCS: SUPER CYCLONIC STORM (\geq 120 KT)

- LESS THAN 34 KT
- 34-47 KT
- \geq 48 KT
- OBSERVED TRACK
- FORECAST TRACK
- CONE OF UNCERTAINTY
- AREA OF MAXIMUM SUSTAINED WIND SPEED:
- 28-33 KT (52-61 KMPH)
- 34-49 KT (62-91 KMPH)
- 50-63 KT (92-117 KMPH)
- \geq 64 KT (\geq 118 KMPH)

IMPACT OVER THE SEA

MSW (knot/kmph)	Impact	Action
28-33 (52-61)	Very rough seas	Total suspension of fishing operations
34-49 (62-91)	High to very high seas	Total suspension of fishing operations
50-63 (92-117)	Very high seas	Total suspension of fishing operations
\geq 64 (\geq 118)	Phenomenal	Total suspension of fishing operations