



**REGIONAL SPECIALISED METEOROLOGICAL CENTRE-TROPICAL CYCLONES, NEW DELHI
TROPICAL WEATHER OUTLOOK**

DEMS-RSMC SPECIAL TROPICAL CYCLONES NEW DELHI DATED 11.12.2022

TROPICAL WEATHER OUTLOOK FOR NORTH INDIAN OCEAN (THE BAY OF BENGAL AND THE ARABIAN SEA) VALID FOR NEXT 120 HOURS ISSUED AT 0600 UTC OF 11.12.2022 BASED ON 0300 UTC OF 11.12.2022.

BAY OF BENGAL:

YESTERDAYS DEPRESSION OVER NORTH TAMIL NADU WEAKEN INTO A WML OVER NORTH INTERIOR TAMIL NADU AND NEIGHBOURHOOD AT 1200 UTC OF 10TH DECEMBER AND LOW PRESSURE AREA(LPA) OVER NORTH INTERIOR TAMIL NADU AND ADJOINING SOUTH INTERIOR KARNATAKA & NORTH KERALA AT 0000 UTC AND LAY AS A CYCLONIC CIRCULATION OVER NORTH INTERIOR TAMIL NADU AND ADJOINING SOUTH INTERIOR KARNATAKA & NORTH KERALA AT 0300 OF 11TH DECEMBER.

IT IS LIKELY TO EMERGE INTO SOUTHEAST & ADJOINING EASTCENTRAL ARABIAN SEA OFF NORTH KERALA-KARNATAKA COAST. UNDER ITS INFLUENCE, A LOW PRESSURE AREA IS LIKELY TO FORM OVER THE SAME REGION AROUND 13TH DECEMBER AND MOVE WEST-NORTHWESTWARDS AWAY FROM THE INDIAN COAST THEREAFTER.

AS PER INSAT- 3D IMAGERY, A LOW LEVEL CIRCULATION LAY OVER NORTHWEST TAMIL NADU ADJOINING SOUTH INTERIOR KARNATAKA & ADJOINING NORTH KERALA AND NEIGHBOURHOOD. SCATTERED TO BROKEN LOW AND MEDIUM CLOUDS WITH EMBEDDED WEAK CONVECTION OVER SOUTH INTERIOR KARNATAKA NORTHWEST TAMIL NADU NORTH KERALA ARE SEEN IN ITS ASSOCIATION.

SCATTERED TO BROKEN LOW AND MEDIUM CLOUDS WITH EMBEDDED INTENSE TO VERY INTENSE CONVECTION OVER SOUTHEAST BAY OF BENGAL AND ANDAMAN SEA. SCATTERED LOW AND MEDIUM CLOUDS WITH EMBEDDED MODERATE TO INTENSE CONVECTION OVER WESTCENTRAL & SOUTHWEST BAY OF BENGAL AND WEAK TO MODERATE CONVECTION OVER NORTHWEST & EASTCENTRAL BAY OF BENGAL.

PROBABILITY OF CYCLOGENESIS (FORMATION OF DEPRESSION) DURING NEXT 120 HRS:

24 HOURS	24-48 HOURS	48-72 HOURS	72-96 HOURS	96-120 HOURS
NIL	NIL	NIL	NIL	NIL

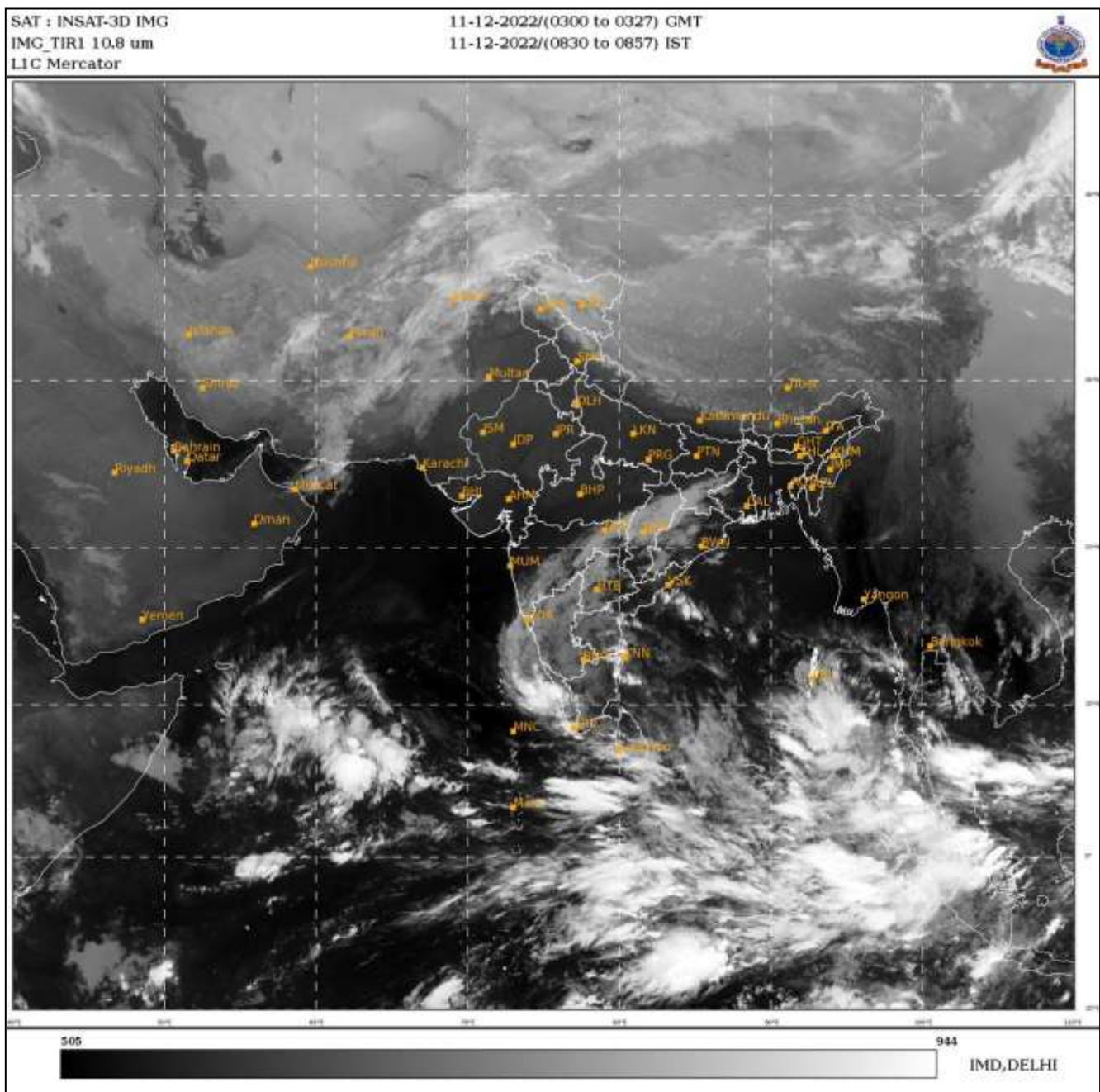
ARABIAN SEA:

SCATTERED TO BROKEN LOW AND MEDIUM CLOUDS WITH EMBEDDED INTENSE TO VERY INTENSE CONVECTION OVER SOUTH ARABIAN SEA LAKSHADWEEP ISLANDS AREA AND COMORIN AREA. SCATTERED LOW AND MEDIUM CLOUDS WITH EMBEDDED WEAK TO MODERATE CONVECTION OVER EXTREME NORTHWEST ARABIAN SEA AND CENTRAL ARABIAN SEA ADJOINING SOUTH MAHARASHTRA-GOJA-KARNATAKA COASTS.

PROBABILITY OF CYCLOGENESIS (FORMATION OF DEPRESSION) DURING NEXT 120 HRS:

24 HOURS	24-48 HOURS	48-72 HOURS	72-96 HOURS	96-120 HOURS
NIL	NIL	NIL	NIL	NIL

Remarks: NIL



Cloud distribution: (a) Isolated: <25%, Scattered:25-50%, Broken: 51-75%, Solid:>75%, Convection Intensity: (a) Weak: Cloud Top Temperature (CTT) >-25°C, (b) Moderate: CTT: - 25°C to -40°C, (c) Intense: CTT: - 41°C to -70°C and (d) Very Intense: : Less than -70°C
 PROBABILITY OF CYCLOGENESIS (FORMATION OF DEPRESSION): NIL: 0%, LOW: 1-33%, MODERATE: 34-66% AND HIGH: 67-100%
 This is a guidance Bulletin for WMO/ESCAP Panel Member countries. Visit respective National websites for Country specific Bulletins