



**REGIONAL SPECIALISED METEOROLOGICAL CENTRE-TROPICAL CYCLONES, NEW DELHI
TROPICAL WEATHER OUTLOOK**

DEMS-RSMC SPECIAL TROPICAL CYCLONES NEW DELHI DATED 03.05.2022

TROPICAL WEATHER OUTLOOK FOR NORTH INDIAN OCEAN (THE BAY OF BENGAL AND ARABIAN SEA) VALID FOR NEXT 120 HOURS ISSUED AT 0600 UTC OF 03.05.2022 BASED ON 0300 UTC OF 03.05.2022.

BAY OF BENGAL:

A CYCLONIC CIRCULATION IS LIKELY TO FORM OVER SOUTH ANDAMAN SEA AND NEIGHBOURHOOD AROUND 04TH MAY. UNDER ITS INFLUENCE, A LOW PRESSURE AREA IS LIKELY TO FORM OVER THE SAME REGION AROUND 06TH MAY. IT IS LIKELY TO BECOME MORE MARKED DURING SUBSEQUENT 24 HOURS.

SCATTERED TO BROKEN LOW AND MEDIUM CLOUDS WITH EMBEDDED INTENSE TO VERY INTENSE CONVECTION OVER SOUTH BAY OF BENGAL AND ANDAMAN SEA (MINIMUM CLOUD TOP TEMPERATURE MINUS 93 DEG CEL). SCATTERED LOW AND MEDIUM CLOUDS WITH EMBEDDED MODERATE TO INTENSE CONVECTION OVER WESTCENTRAL BAY OF BENGAL & WEAK TO MODERATE CONVECTION OVER NORTHWEST BAY OF BENGAL OFF SOUTH ODISHA – NORTH ANDHRA PRADESH COAST AND EASTCENTRAL BAY OF BENGAL.

PROBABILITY OF CYCLOGENESIS (FORMATION OF DEPRESSION) DURING NEXT 120 HRS:

24 HOURS	24-48 HOURS	48-72 HOURS	72-96 HOURS	96-120 HOURS
NIL	NIL	LOW	MODERATE	HIGH

ARABIAN SEA:

SCATTERED LOW AND MEDIUM CLOUDS WITH EMBEDDED INTENSE TO VERY INTENSE CONVECTION OVER SOUTH ARABIAN SEA SOUTH OF LATTITUDE 10.0N. SCATTERED LOW AND MEDIUM CLOUDS WITH EMBEDDED ISOLATED WEAK CONVECTION OVER SOUTHEAST ARABIAN SEA OFF KERALA COAST AND COMORIN REGION.

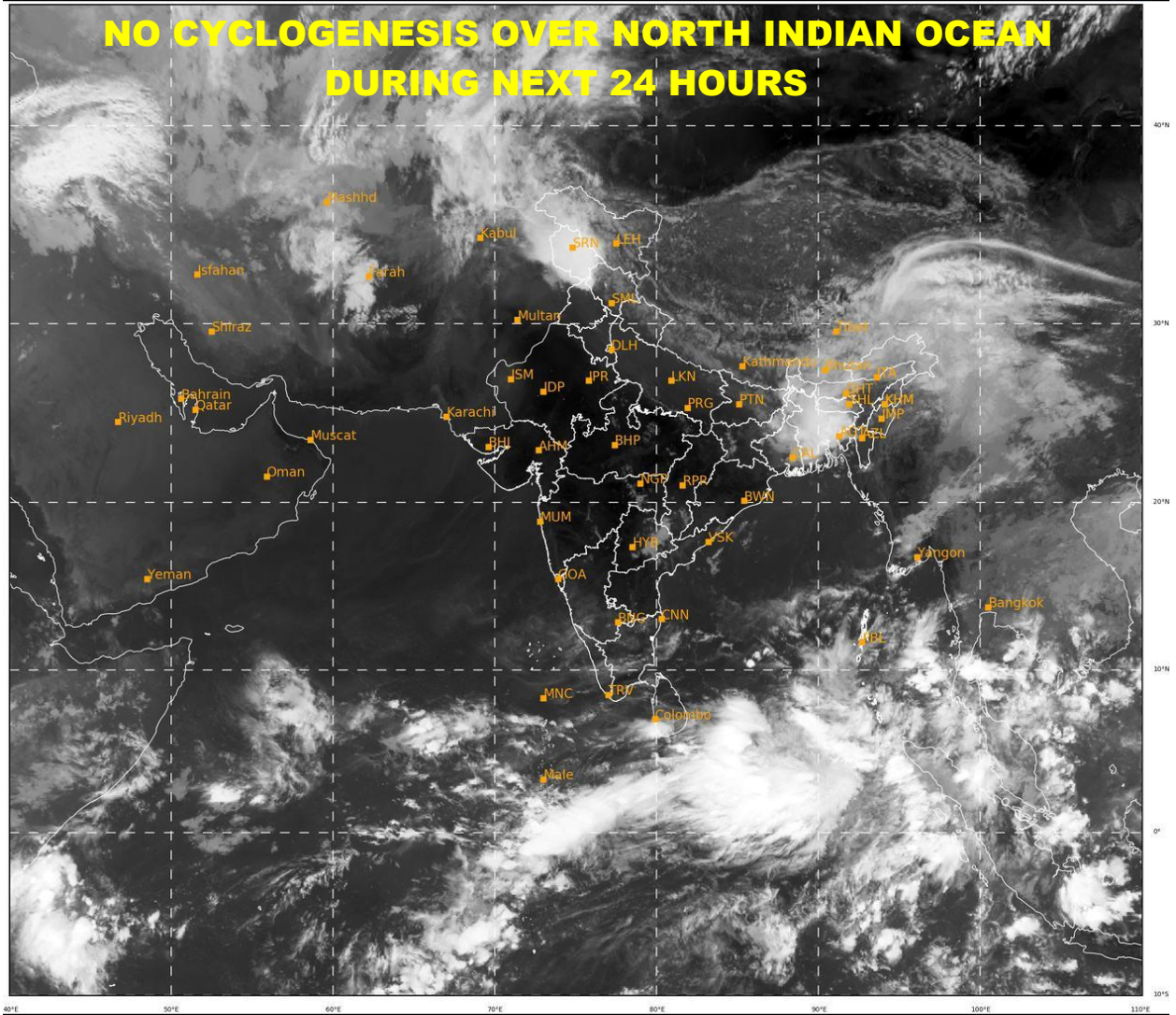
PROBABILITY OF CYCLOGENESIS (FORMATION OF DEPRESSION) DURING NEXT 120 HRS:

24 HOURS	24-48 HOURS	48-72 HOURS	72-96 HOURS	96-120 HOURS
NIL	NIL	NIL	NIL	NIL

REMARKS: NIL



NO CYCLOGENESIS OVER NORTH INDIAN OCEAN DURING NEXT 24 HOURS



403

940

IMD, DELHI