



**REGIONAL SPECIALISED METEOROLOGICAL CENTRE-TROPICAL CYCLONES, NEW DELHI
SPECIAL TROPICAL WEATHER OUTLOOK**

DEMS-RSMC SPECIAL TROPICAL CYCLONES NEW DELHI DATED 14.08.2022

SPECIAL TROPICAL WEATHER OUTLOOK FOR NORTH INDIAN OCEAN (THE BAY OF BENGAL AND ARABIAN SEA) VALID FOR NEXT 120 HOURS ISSUED AT 1400 UTC OF 14.08.2022 BASED ON 1200 UTC OF 14.08.2022.

DEPRESSION OVER SOUTH JHARKHAND AND ADJOINING NORTH ODISHA

THE DEPRESSION OVER COASTAL WEST BENGAL & ADJOINING NORTH ODISHA MOVED WEST-NORTHWESTWARDS WITH A SPEED OF 25 KMPH DURING LAST 6 HOURS AND LAY CENTERED AT 1200 UTC OF TODAY, THE 14TH AUGUST OVER SOUTH JHARKHAND & ADJOINING NORTH ODISHA NEAR LATITUDE 22.1°N AND LONGITUDE 86.0°E ABOUT 80 KM SOUTH-SOUTHWEST OF JAMSHEDPUR (42798) AND 70 KM NORTH-NORTHEAST OF KEONJHARGARH (42891).

IT IS VERY LIKELY TO CONTINUE TO MOVE WEST-NORTHWESTWARDS AND MAINTAIN THE INTENSITY OF DEPRESSION DURING NEXT 24 HOURS.

AS PER INSTAD 3D IMAGERY AT 1200 UTC, BROKEN LOW AND MEDIUM CLOUDS WITH EMBEDDED INTENSE TO VERY INTENSE CONVECTION LAY OVER NORTH BAY OF BENGAL, ODISHA, GANGETIC WEST BENGAL, SOUTH JHARKHAND AND CHATTISGARH. MINIMUM CLOUD TOP TEMPERATURE IS MINUS 93°C.

ESTIMATED MAXIMUM SUSTAINED WIND SPEED IS 25 KNOTS GUSTING TO 35 KNOTS. ESTIMATED CENTRAL PRESSURE IS 994 HPA. SEA CONDITION IS LIKELY TO BE ROUGH TO VERY ROUGH OVER NORTH BAY OF BENGAL AND ALONG & OFF BANGLADESH, WEST BENGAL, ODISHA AND ADJOINING NORTH ANDHRA PRADESH COASTS TILL 0000 UTC OF 15TH AUGUST .

REMARKS:

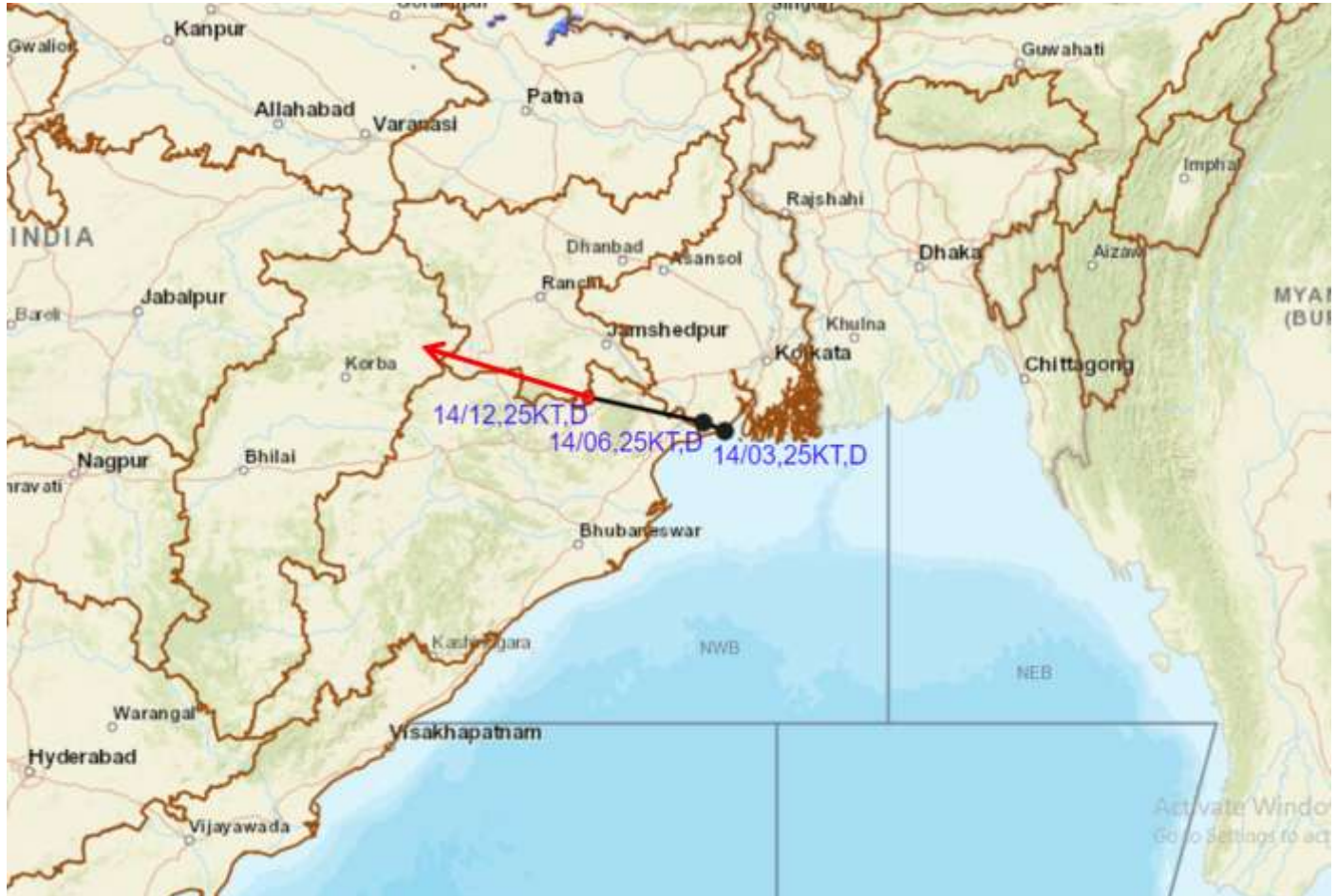
LOW LEVEL VORTICITY IS SAME AND IS AROUND $150 \times 10^{-6} \text{ S}^{-1}$ TO THE SOUTHWEST OF SYSTEM CENTRE OVER COASTAL ODISHA AND IS EXTENDING UPTO 200 HPA LEVELS. LOW LEVEL CONVERGENCE HAS DECREASED AND IS AROUND $20 \times 10^{-5} \text{ S}^{-1}$ TO THE SOUTHWEST OF SYSTEM CENTRE. POSITIVE UPPER LEVEL DIVERGENCE IS AROUND $10 \times 10^{-5} \text{ S}^{-1}$ OVER SYSTEM CENTRE AND ALONG FORECAST TRACK. WIND SHEAR IS LOW (05-15 KNOTS) OVER SYSTEM AREA AND ALONG THE FORECAST TRACK. UNDER THESE FAVOURABLE ENVIRONMENTAL CONDITIONS, THE SYSTEM IS LIKELY TO MAINTAIN IT'S INTENSITY DURING NEXT 24 HOURS.

MOST OF THE NWP MODELS ARE UNANIMOUSLY INDICATING WEST-NORTHWESTWARDS MOVEMENT OF THE SYSTEM AND MODELS ARE ALSO INDICATING THE SYSTEM TO MAINTAIN IT'S INTENSITY DURING NEXT 24 HOURS.

(M. SHARMA)
SCIENTIST D,
RSMC, NEW DELHI



OBSERVED AND FORECAST TRACK OF DEPRESSION OVER SOUTH JHARKHAND AND ADJOINING NORTH ODISHA BASED ON 1200 UTC OF 14th AUGUST, 2022



DATE/TIME IN UTC

IST=UTC + 0530

L: LOW PRESSURE AREA

WML: WELL MARKED LOW PRESSURE AREA

D: DEPRESSION (17-27 KT)

DD: DEEP DEPRESSION (28-33 KT)

CS: CYCLONIC STORM (34-47 KT)

SCS: SEVERE CYCLONIC STORM (48-63KT)

VSCS: VERY SEVERE CYCLONIC STORM (64-89 KT)

ESCS: EXTREMELY SEVERE CYCLONIC STORM (90-119 KT)

SuCS: SUPER CYCLONIC STORM (\geq 120 KT)

- LESS THAN 34 KT
- 34-47 KT
- \geq 48 KT
- OBSERVED TRACK
- FORECAST TRACK
- CONE OF UNCERTAINTY

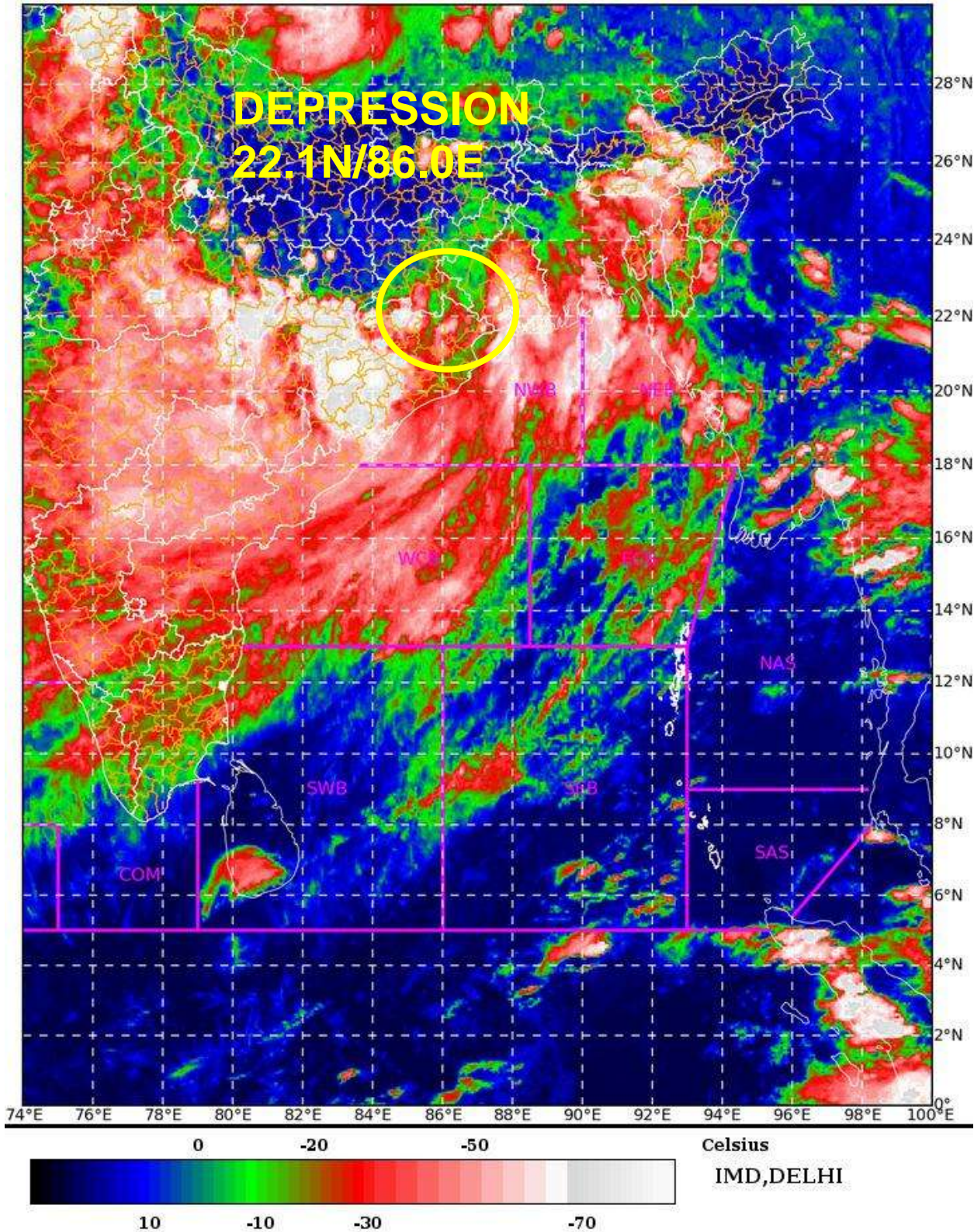
SAT : INSAT-3D IMG

14-08-2022/(1230 to 1256) GMT

IMG_TIR1_TEMP 10.8 um

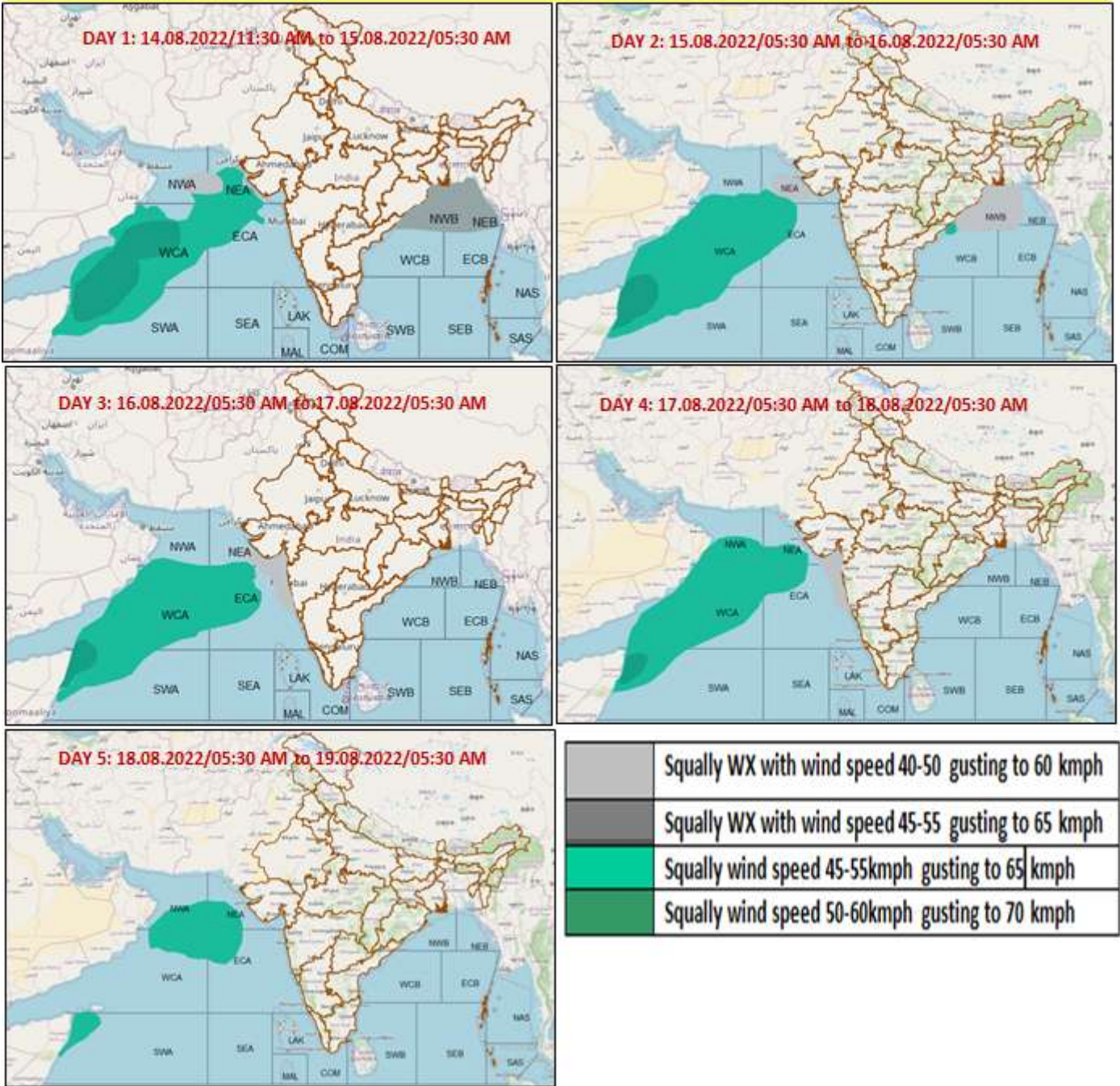
14-08-2022/(1800 to 1826) IST

L1C Mercator



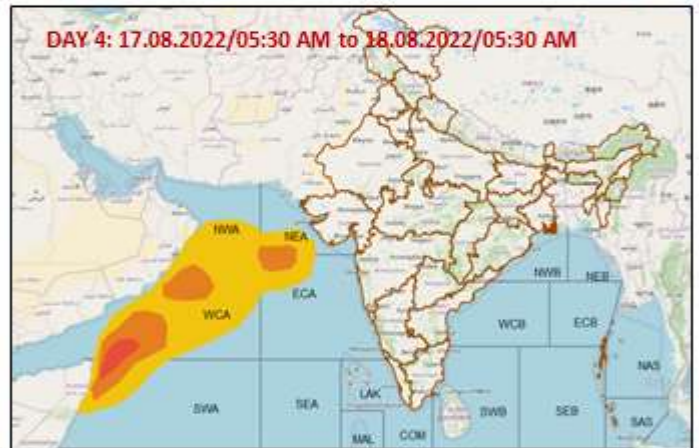
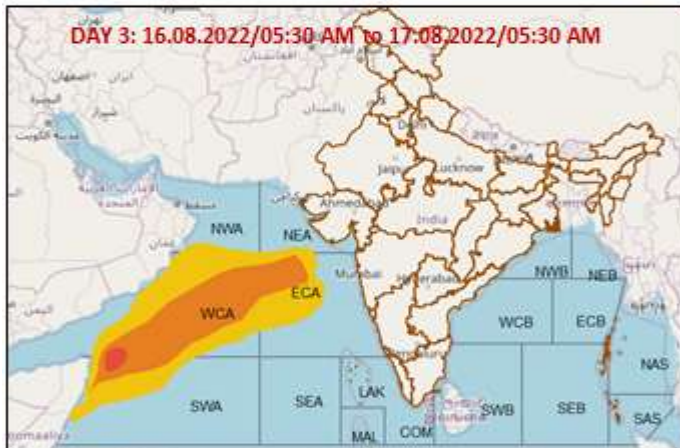
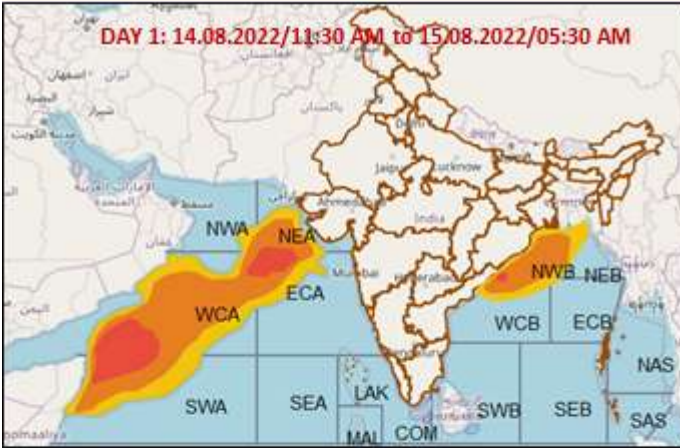
Cloud distribution: (a) Isolated: <25%, Scattered:25-50%, Broken: 51-75%, Solid:>75%, Convection Intensity: (a) Weak: Cloud Top Temperature (CTT) >-25°C, (b) Moderate: CTT: - 25°C to -40°C, (c) Intense: CTT: - 41°C to -70°C and (d) Very Intense: : Less than -70°C
 PROBABILITY OF CYCLOGENESIS (FORMATION OF DEPRESSION): NIL: 0%, LOW: 1-33%, MODERATE: 34-66% AND HIGH: 67-100%
 This is a guidance Bulletin for WMO/ESCAP Panel Member countries. Visit respective National websites for Country specific Bulletins

Fishermen Warning Graphics



Cloud distribution: (a) Isolated: <25%, Scattered:25-50%, Broken: 51-75%, Solid:>75%, Convection Intensity: (a) Weak: Cloud Top Temperature (CTT) >-25°C, (b) Moderate: CTT: - 25°C to -40°C, (c) Intense: CTT: - 41°C to -70°C and (d) Very Intense: : Less than -70°C
PROBABILITY OF CYCLOGENESIS (FORMATION OF DEPRESSION): NIL: 0%, LOW: 1-33%, , MODERATE: 34-66% AND HIGH: 67-100%
 This is a guidance Bulletin for WMO/ESCAP Panel Member countries. Visit respective National websites for Country specific Bulletins

Probability of exceedance of maximum sustained winds ≥ 45 kmph



	Probability of exceedance
	Low (1-33%)
	Moderate (34-67%)
	High (68-100%)

Cloud distribution: (a) Isolated: <25%, Scattered:25-50%, Broken: 51-75%, Solid:>75%, Convection Intensity: (a) Weak: Cloud Top Temperature (CTT) >-25°C, (b) Moderate: CTT: - 25°C to -40°C, (c) Intense: CTT: - 41°C to -70°C and (d) Very Intense: : Less than -70°C
PROBABILITY OF CYCLOGENESIS (FORMATION OF DEPRESSION): NIL: 0%, LOW: 1-33%, , MODERATE: 34-66% AND HIGH: 67-100%
 This is a guidance Bulletin for WMO/ESCAP Panel Member countries. Visit respective National websites for Country specific Bulletins