



**REGIONAL SPECIALISED METEOROLOGICAL CENTRE-TROPICAL CYCLONES, NEW DELHI
TROPICAL WEATHER OUTLOOK**

DEMS-RSMC SPECIAL TROPICAL CYCLONES NEW DELHI DATED 13.12.2022

TROPICAL WEATHER OUTLOOK FOR NORTH INDIAN OCEAN (THE BAY OF BENGAL AND THE ARABIAN SEA) VALID FOR NEXT 120 HOURS ISSUED AT 0600 UTC OF 13.12.2022 BASED ON 0300 UTC OF 13.12.2022.

BAY OF BENGAL:

A CYCLONIC CIRCULATION LAY OVER SOUTH ANDAMAN SEA AND ADJOINING STRAIT OF MALACCA & SUMATRA.

SCATTERED TO BROKEN LOW AND MEDIUM CLOUDS WITH EMBEDDED INTENSE TO VERY INTENSE CONVECTION LAY OVER SOUTH BAY OF BENGAL AND SOUTH ANDAMAN SEA. SCATTERED LOW AND MEDIUM CLOUDS WITH EMBEDDED WEAK TO MODERATE CONVECTION LAY OVER SOUTHWEST BAY OF BENGAL NORTH ANDAMAN SEA.

PROBABILITY OF CYCLOGENESIS (FORMATION OF DEPRESSION) DURING NEXT 120 HRS:

24 HOURS	24-48 HOURS	48-72 HOURS	72-96 HOURS	96-120 HOURS
NIL	NIL	NIL	NIL	NIL

ARABIAN SEA:

UNDER THE INFLUENCE OF YESTERDAY'S CYCLONIC CIRCULATION (REMNANT OF CYCLONIC STORM MANDOUS) OVER NORTH KERALA & NEIGHBOURHOOD, A LOW PRESSURE FORMED OVER SOUTHEAST AND ADJOINING EASTCENTRAL ARABIAN SEA OFF NORTH KERALA-KARNATAKA COASTS AT 0000 UTC OF TODAY, THE 13TH DECEMBER, 2022. THE LOW PRESSURE AREA NOW LAY OVER EASTCENTRAL AND ADJOINING SOUTHEAST ARABIAN SEA OFF NORTH KERALA AND KARNATAKA COASTS AT 0300 UTC OF TODAY, THE 13TH DECEMBER, 2022. IT IS VERY LIKELY TO MOVE WEST-NORTHWESTWARDS AWAY FROM THE INDIAN COAST AND BECOME WELL MARKED LOW PRESSURE AREA OVER EASTCENTRAL AND ADJOINING SOUTHEAST ARABIAN SEA BY 14TH DECEMBER MORNING AND CONCENTRATE INTO A DEPRESSION OVER EASTCENTRAL ARABIAN SEA AROUND 15TH DECEMBER MORNING.

SCATTERED TO BROKEN LOW AND MEDIUM CLOUDS WITH EMBEDDED INTENSE TO VERY INTENSE CONVECTION LAY OVER EASTCENTRAL ARABIAN SEA, SOUTH ARABIAN SEA AND LAKSHADWEEP ISLANDS AREA. SCATTERED LOW AND MEDIUM CLOUDS WITH EMBEDDED MODERATE TO INTENSE CONVECTION LAY OVER COMORIN AREA.

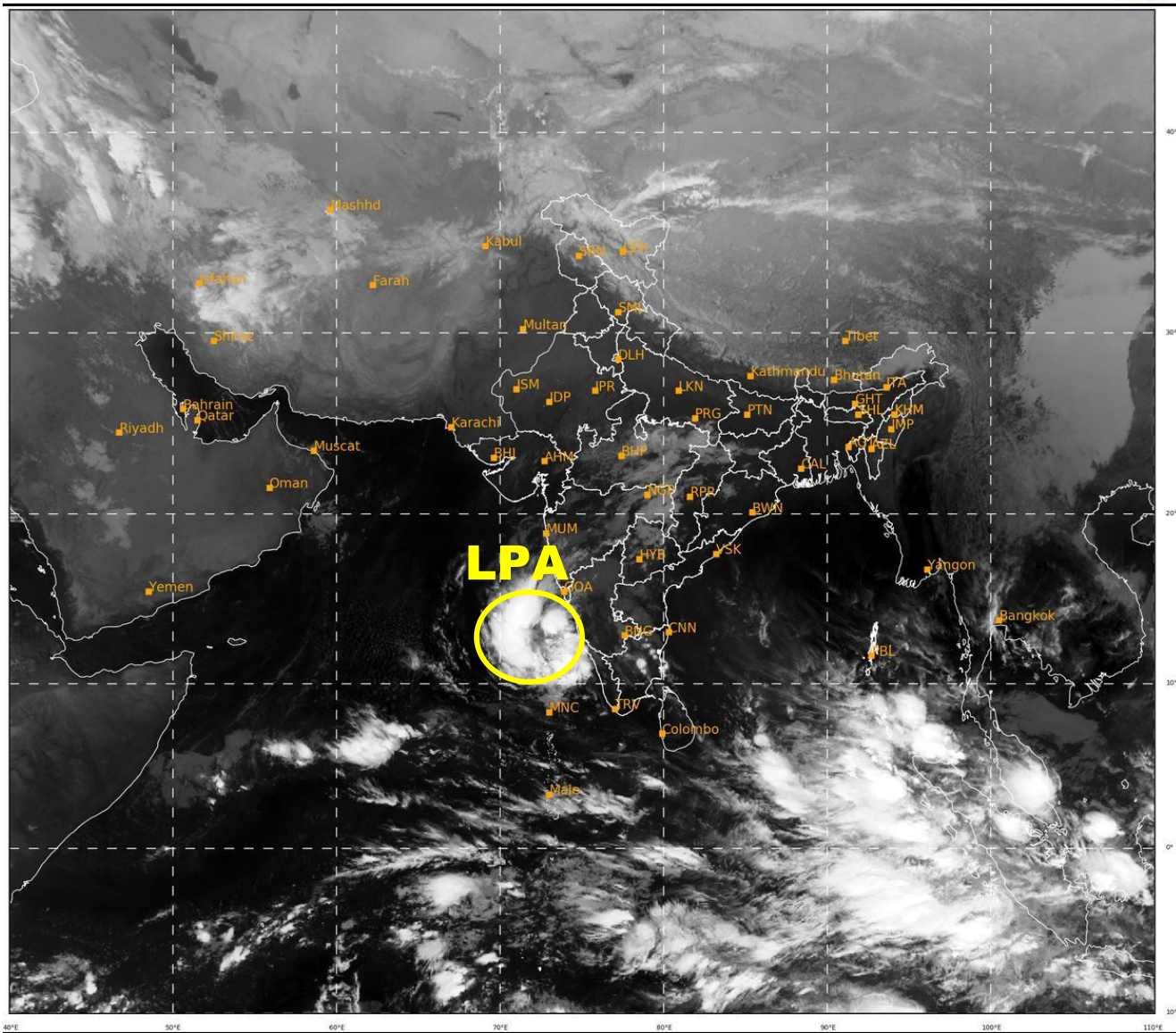
PROBABILITY OF CYCLOGENESIS (FORMATION OF DEPRESSION) DURING NEXT 120 HRS:

24 HOURS	24-48 HOURS	48-72 HOURS	72-96 HOURS	96-120 HOURS
NIL	LOW	MOD	MOD	NIL

Remarks: NIL

SAT : INSAT-3D IMG
IMG_TIR1 10.8 um
LIC Mercator

13-12-2022/(0300 to 0327) GMT
13-12-2022/(0830 to 0857) IST



504

937

IMD, DELHI

LPA- LOW PRESSURE AREA

Cloud distribution: (a) Isolated: <25%, Scattered:25-50%, Broken: 51-75%, Solid:>75%, Convection Intensity: (a) Weak: Cloud Top Temperature (CTT) >-25°C, (b) Moderate: CTT: - 25°C to -40°C, (c) Intense: CTT: - 41°C to -70°C and (d) Very Intense: : Less than -70°C
PROBABILITY OF CYCLOGENESIS (FORMATION OF DEPRESSION): NIL: 0%, LOW: 1-33%, , MODERATE: 34-66% AND HIGH: 67-100%
This is a guidance Bulletin for WMO/ESCAP Panel Member countries. Visit respective National websites for Country specific Bulletins