



**REGIONAL SPECIALISED METEOROLOGICAL CENTRE-TROPICAL CYCLONES, NEW DELHI
TROPICAL WEATHER OUTLOOK**

DEMS-RSMC TROPICAL CYCLONES NEW DELHI DATED 27.08.2022

**TROPICAL WEATHER OUTLOOK FOR NORTH INDIAN OCEAN (THE BAY OF BENGAL OF BENGAL OF BENGAL OF BENGAL AND ARABIAN SEA) VALID FOR NEXT 120 HOURS
ISSUED AT 0630UTC OF 27.08.2022 BASED ON 0300 UTC OF 27.08.2022.**

BAY OF BENGAL:

YESTERDAY'S LOW PRESSURE AREA OVER SOUTHEAST PAKISTAN & ADJOINING SOUTHWEST RAJASTHAN BECAME LESS MARKED OVER THE SAME REGION AT 0300 UTC OF TODAY, THE 27TH AUGUST, 2022.

YESTERDAY'S CYCLONIC CIRCULATION LAY OVER SOUTHWEST BAY OF BENGAL & NEIGHBOURHOOD BECAME LESS MARKED OVER THE SAME REGION AT 0300 UTC OF TODAY, THE 27TH AUGUST, 2022.

A FRESH CYCLONIC CIRCULATION LAY OVER CENTRAL PARTS OF SOUTH BAY OF BENGAL AT 0300 UTC OF TODAY, THE 27TH AUGUST, 2022.

SCATTERED LOW AND MEDIUM CLOUDS WITH EMBEDDED INTENSE TO VERY INTENSE CONVECTION OVER NORTHEAST BAY OF BENGAL, CENTRAL & SOUTH BAY OF BENGAL AND ANDAMAN SEA. SCATTERED LOW AND MEDIUM CLOUDS WITH EMBEDDED WEAK TO MODERATE CONVECTION OVER NORTHWEST BAY OF BENGAL.

PROBABILITY OF CYCLOGENESIS (FORMATION OF DEPRESSION) DURING NEXT 120 HRS:

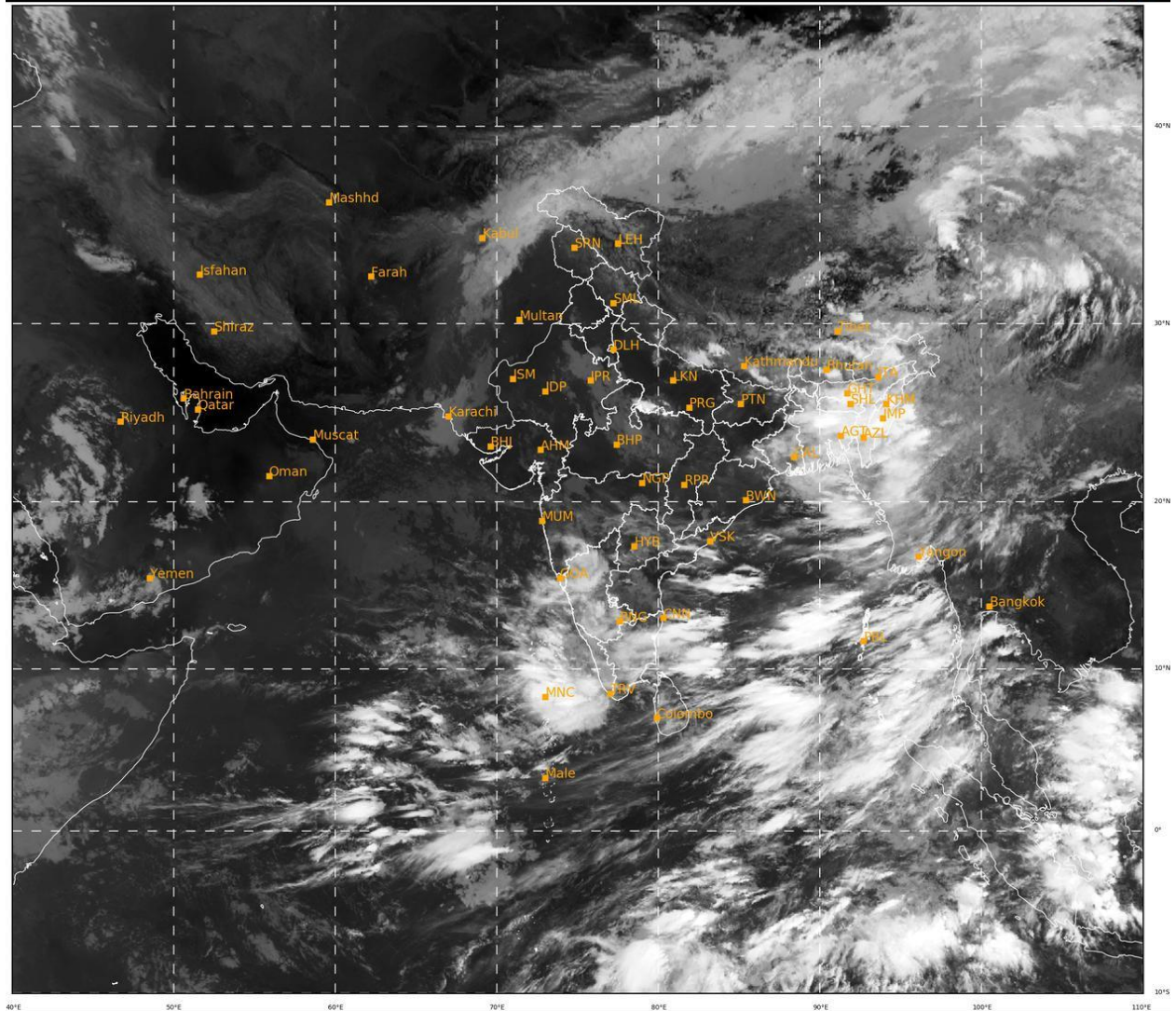
24 HOURS	24-48 HOURS	48-72 HOURS	72-96 HOURS	96-120 HOURS
NIL	NIL	NIL	NIL	NIL

ARABIAN SEA:

SCATTERED LOW AND MEDIUM CLOUDS WITH EMBEDDED INTENSE TO VERY INTENSE CONVECTION OVER SOUTHEAST ARABIAN SEA, LAKSHADWEEP ISLANDS AREA. SCATTERED LOW AND MEDIUM CLOUDS WITH EMBEDDED MODERATE TO INTENSE CONVECTION OVER COMORIN AREA. SCATTERED LOW AND MEDIUM CLOUDS OVER REST AREAS OF ARABIAN SEA.

PROBABILITY OF CYCLOGENESIS (FORMATION OF DEPRESSION) DURING NEXT 120 HRS:

24 HOURS	24-48 HOURS	48-72 HOURS	72-96 HOURS	96-120 HOURS
NIL	NIL	NIL	NIL	NIL



478

932

IMD, DELHI

Cloud distribution: (a) Isolated: <25%, Scattered:25-50%, Broken: 51-75%, Solid:>75%, Convection Intensity: (a) Weak: Cloud Top Temperature (CTT) >-25°C, (b) Moderate: CTT: - 25°C to -40°C, (c) Intense: CTT: - 41°C to -70°C and (d) Very Intense: : Less than -70°C
PROBABILITY OF CYCLOGENESIS (FORMATION OF DEPRESSION):NIL: 0%, LOW: 1-33%, , MODERATE: 34-66% AND HIGH: 67-100%
This is a guidance Bulletin for WMO/ESCAP Panel Member countries. Visit respective National websites for Country specific Bulletins