



**REGIONAL SPECIALISED METEOROLOGICAL CENTRE-TROPICAL CYCLONES, NEW DELHI  
TROPICAL WEATHER OUTLOOK**

**DEMS-RSMC SPECIAL TROPICAL CYCLONES NEW DELHI DATED 17.08.2022**

**TROPICAL WEATHER OUTLOOK FOR NORTH INDIAN OCEAN (THEBAY OF BENGAL OF BENGAL AND ARABIAN SEA) VALID FOR NEXT 120 HOURS ISSUED AT 0600 UTC OF 17.08.2022 BASED ON 0300 UTC OF 17.08.2022.**

**(A) WELL MARKED LOW PRESSURE AREA OVER SOUTHWEST RAJASTHAN**

YESTERDAY'S DEPRESSION OVER EAST RAJASTHAN MOVED WEST-NORTHWESTWARDS AND WEAKENED INTO A WELL MARKED LOW PRESSURE AREA OVER CENTRAL PARTS OF RAJASTHAN AT 1200 UTC OF 16TH AUGUST, 2022. IT FURTHER MOVED WEST-NORTHWESTWARDS AND LAY OVER SOUTHWEST RAJASTHAN AND NEIGHBOURHOOD AT 0300 UTC OF TODAY, THE 17<sup>TH</sup> AUGUST, 2022.

IT IS VERY LIKELY TO CONTINUE TO MOVE WEST-NORTHWESTWARDS TOWARDS PAKISTAN AND MAINTAIN IT'S INTENSITY DURING NEXT 24 HOURS.

AS PER INSAT-3D IMAGERY, AS PER INSAT 3D IMAGERY AT 0300 UTC, ASSOCIATED SCATTERED TO BROKEN LOW AND MEDIUM CLOUDS WITH EMBEDDED INTENSE TO VERY INTENSE CONVECTION LAY OVER WEST GUJARAT. MINIMUM CLOUD TOP TEMPERATURE IS MINUS 93°C. SCATTERED TO BROKEN LOW AND MEDIUM CLOUDS WITH EMBEDDED MODERATE TO INTENSE CONVECTION LAY OVER RAJASTHAN AND EAST GUJARAT.

**(B) BAY OF BENGAL:**

A CYCLONIC CIRCULATION LIES OVER SOUTH MYANMAR & NEIGHBOURHOOD AT 0300 UTC OF TODAY, THE 17TH AUGUST, 2022. UNDER ITS INFLUENCE, A LOW PRESSURE AREA IS LIKELY TO FORM OVER NORTH BAY OF BENGAL AROUND 19TH AUGUST, 2022.

SCATTERED TO BROKEN LOW AND MEDIUM CLOUDS WITH EMBEDDED INTENSE TO VERY INTENSE CONVECTION LAY OVER EASTBAY OF BENGAL OF BENGAL, NORTH ANDAMAN SEA AND ARAKAN COAST. SCATTERED LOW AND MEDIUM CLOUDS WITH EMBEDDED MODERATE TO INTENSE CONVECTION LAY OVER WESTBAY OF BENGAL OF BENGAL, SOUTH ANDAMAN SEA, GULF OF MARTABAN AND TENASSERIM COAST.

**PROBABILITY OF CYCLOGENESIS (FORMATION OF DEPRESSION) DURING NEXT 120 HRS:**

24 HOURS	24-48 HOURS	48-72 HOURS	72-96 HOURS	96-120 HOURS
NIL	NIL	NIL	LOW	MOD

**(C) ARABIAN SEA:**

SCATTERED TO BROKEN LOW AND MEDIUM CLOUDS WITH EMBEDDED INTENSE TO VERY INTENSE CONVECTION LAY OVER NORTHEAST ARABIAN SEA AND GULF OF KUTCH. SCATTERED LOW AND MEDIUM CLOUDS WITH EMBEDDED MODERATE TO INTENSE CONVECTION LAY OVER REST OF ARABIAN SEA AND GULF OF CAMBAY.

**PROBABILITY OF CYCLOGENESIS (FORMATION OF DEPRESSION) DURING NEXT 120 HRS:**

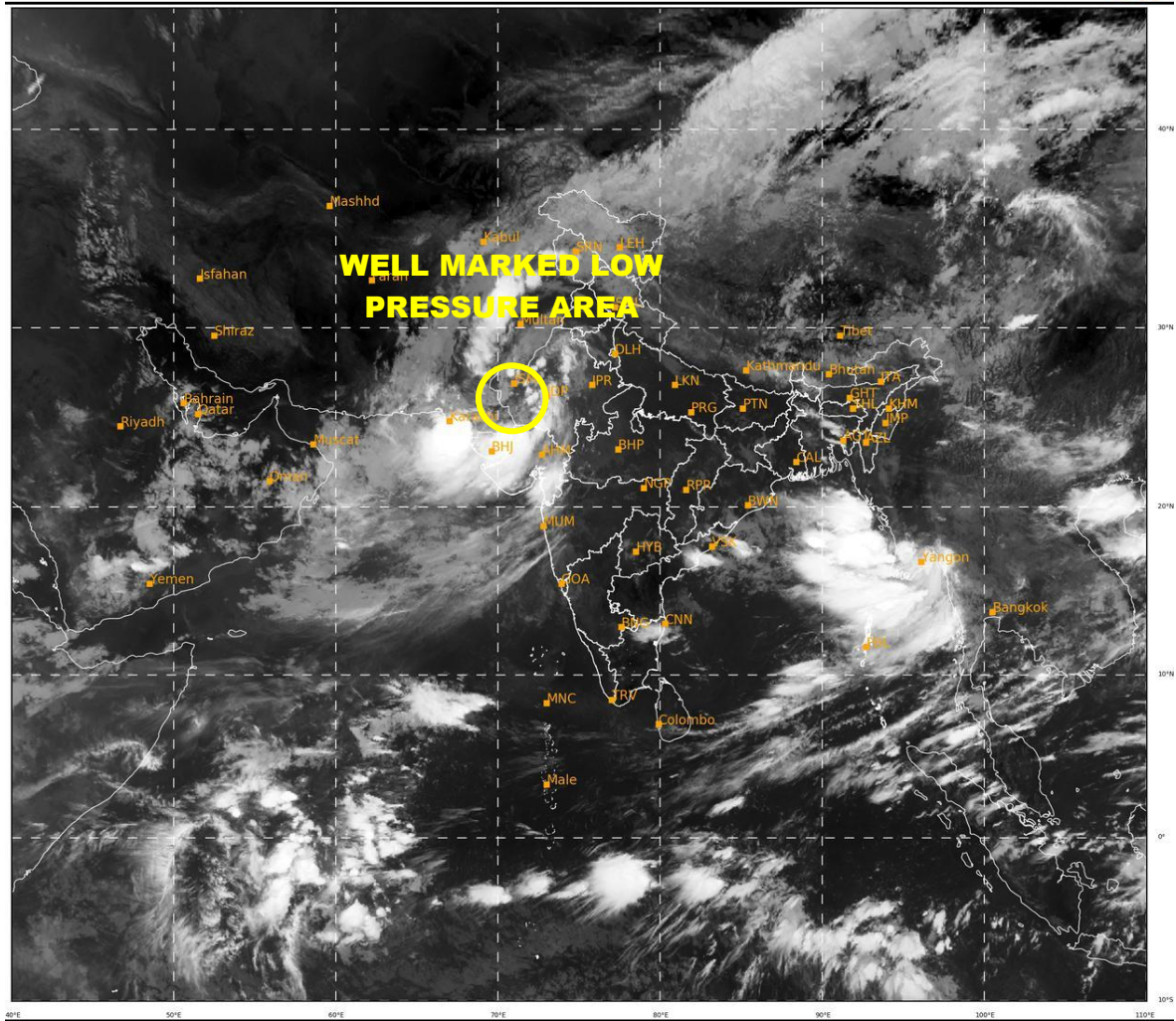
24 HOURS	24-48 HOURS	48-72 HOURS	72-96 HOURS	96-120 HOURS
NIL	NIL	NIL	NIL	NIL

**REMARKS:**

(A) MOST OF THE MODELS INCLUDING IMD GFS, NCUM, ECMWF ARE INDICATING THE WELL MARKED LOW PRESSURE AREA OVER SOUTHWEST RAJASTHAN TO MOVE WEST-NORTHWESTWARDS AND MAINTAIN ITS INTENSITY DURING NEXT 24 HOURS. FAVOURABLE ENVIRONMENTAL CONDITIONS (HIGH POSITIVE VORTICITY ABOUT  $120 \times 10^{-6} \text{ S}^{-1}$ , POSITIVE LOW LEVEL CONVERGENCE  $15 \times 10^{-5} \text{ S}^{-1}$ , POSITIVE UPPER LEVEL DIVERGENCE  $15 \times 10^{-5} \text{ S}^{-1}$ , LOW VERTICAL WIND SHEAR ABOUT 05-10 KNOTS, MOISTURE FEED BACK FROM ARABIAN SEA) ARE PREVAILING OVER THE SYSTEM AREA. HENCE THE WELL MARKED LOW PRESSURE AREA OVER WEST RAJASTHAN AND ADJOINING PAKISTAN IS LIKELY TO MAINTAIN ITS INTENSITY DURING NEXT 24 HOURS.

(B) MOST OF THE MODELS ARE INDICATING DEVELOPMENT OF A LOW PRESSURE AREA OVER NORTH BAY OF BENGAL AROUND 19<sup>TH</sup> AUGUST. MODELS INCLUDING NCUM, NCEP GFS & ECMWF ARE INDICATING IT'S INTENSIFICATION INTO DEPRESSION AROUND 20<sup>TH</sup> AUGUST AND IMD GFS GROUP IS INDICATING NO SIGNIFICANT INTENSIFICATION OF THE SYSTEM. CONSIDERING THE ENVIRONMENTAL CONDITIONS INCLUDING HIGH POSITIVE VORTICITY ABOUT  $100 \times 10^{-6} \text{ S}^{-1}$ , POSITIVE LOW LEVEL CONVERGENCE  $30 \times 10^{-5} \text{ S}^{-1}$ , POSITIVE UPPER LEVEL DIVERGENCE  $30 \times 10^{-5} \text{ S}^{-1}$ , MODERATE VERTICAL WIND SHEAR ABOUT 15-20 KNOTS ARE PREVAILING OVER MYANMAR AND ADJOINING EASTCENTRAL BOB. HENCE A LOW PRESSURE AREA IS LIKELY TO FORM OVER NORTHBAY OF BENGAL AROUND 19<sup>TH</sup> AUGUST.

IN VIEW OF ALL THE ABOVE IT IS INFERRED THAT (A) THE WELL MARKED LOW PRESSURE AREA OVER SOUTHWEST RAJASTHAN IS VERY LIKELY TO CONTINUE TO MOVE WEST-NORTHWESTWARDS TOWARDS PAKISTAN AND MAINTAIN IT'S INTENSITY DURING NEXT 24 HOURS AND (B) A LOW PRESSURE AREA IS LIKELY TO FORM OVER NORTHBAY OF BENGAL AROUND 19<sup>TH</sup> AUGUST. LOW PROBABILITY IS ASSIGNED TO ITS FURTHER INTENSIFICATION INTO DEPRESSION DURING SUBSEQUENT 24 HOURS.



442

931

IMD, DELHI