



**REGIONAL SPECIALISED METEOROLOGICAL CENTRE-TROPICAL CYCLONES, NEW DELHI  
SPECIAL TROPICAL WEATHER OUTLOOK**

**DEMS-RSMC SPECIAL TROPICAL CYCLONES NEW DELHI DATED 22.12.2022**

**SPECIAL TROPICAL WEATHER OUTLOOK FOR NORTH INDIAN OCEAN (THE BAY OF BENGAL AND THE ARABIAN SEA) VALID FOR NEXT 120 HOURS ISSUED AT 1500 UTC OF 22.12.2022 BASED ON 1200 UTC OF 22.12.2022.**

**BAY OF BENGAL:**

**SUB: DEPRESSION OVER SOUTHWEST BAY OF BENGAL**

THE DEPRESSION OVER SOUTHWEST AND ADJOINING SOUTHEAST BAY OF BENGAL MOVED NORTHWESTWARDS WITH A SPEED OF 07 KMPH DURING PAST 6 HOURS AND LAY CENTERED AT 1200 UTC OF TODAY, THE 22<sup>ND</sup> DECEMBER OVER SOUTHWEST BAY OF BENGAL NEAR LATITUDE 9.8°N AND LONGITUDE 84.5°E ABOUT 380 KM EAST-NORTHEAST OF TRINCOMALEE (SRI LANKA, 43418), 520 KM EAST-SOUTHEAST OF NAGAPPATTINAM (TAMIL NADU, 43347) AND 590 KM EAST-SOUTHEAST OF CHENNAI (TAMIL NADU, 43279).

IT IS LIKELY TO CONTINUE TO MOVE NORTHWESTWARDS FOR SOME MORE TIME AND GRADUALLY RECURVE WEST-SOUTHWESTWARDS FROM 23<sup>RD</sup> MORNING TOWARDS COMORIN AREA ACROSS SRI LANKA DURING SUBSEQUENT 48 HOURS.

AS PER INSAT-3D IMAGERY, INTENSITY OF THE SYSTEM IS T 1.5. ASSOCIATED BROKEN LOW AND MEDIUM CLOUDS WITH EMBEDDED INTENSE TO VERY INTENSE CONVECTION LAY OVER SOUTHWEST ADJOINING SOUTHEAST & CENTRAL BAY OF BENGAL AND SOUTH ANDAMAN SEA. MINIMUM CTT MINUS 93 DEG CEL.

THE MAXIMUM SUSTAINED SURFACE WIND SPEED IS 25 KNOTS GUSTING TO 35 KNOTS. THE ESTIMATED CENTRAL PRESSURE IS ABOUT 1004 HPA. SEA CONDITION IS ROUGH TO VERY ROUGH OVER SOUTHWEST BAY OF BENGAL AND ALONG & OFF TAMILNADU & SRILANKA COASTS.

**ARABIAN SEA:**

THE EXISTING DEPRESSION IS LIKELY TO EMERGE INTO COMORIN AREA AROUND 26<sup>TH</sup> DECEMBER AND MOVE WEST-NORTHWESTWARDS THEREAFTER TOWARDS SOUTHEAST ARABIAN SEA.

SCATTERED LOW AND MEDIUM CLOUDS WITH EMBEDDED INTENSE TO VERY INTENSE CONVECTION OVER SOUTHEAST & ADJOINING SOUTHWEST ARABIAN SEA & COMORIN AREA.

**PROBABILITY OF CYCLOGENESIS (FORMATION OF DEPRESSION) DURING NEXT 120 HRS:**

24 HOURS	24-48 HOURS	48-72 HOURS	72-96 HOURS	96-120 HOURS
NIL	NIL	NIL	MOD	LOW

**Remarks:**

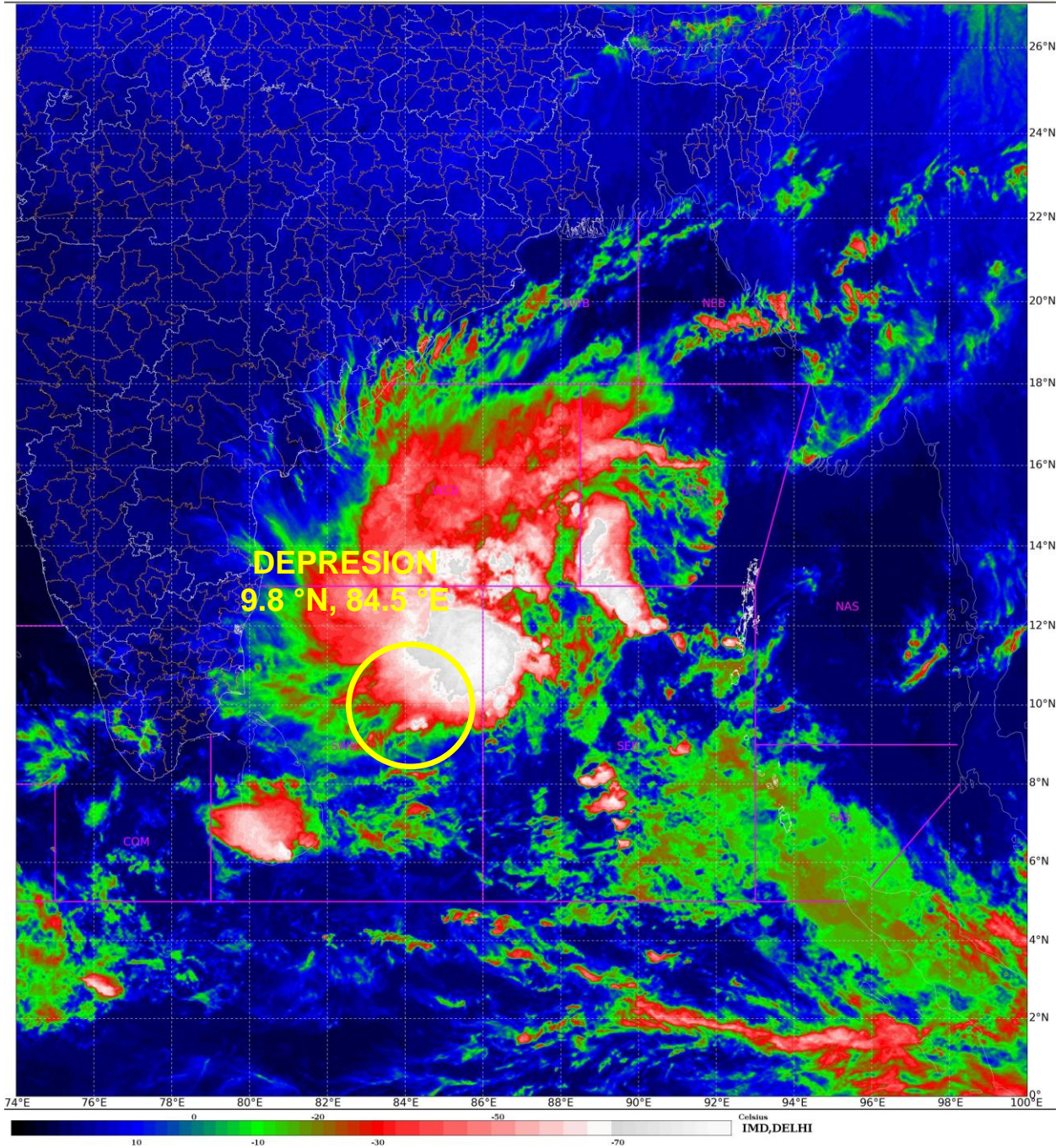
SEA SURFACE TEMPERATURE IS ABOUT 28-29°C OVER SOUTH BOB AND ADJOINING EQUATORIAL INDIAN OCEAN. MADDEN JULIAN OSCILLATION INDEX IS IN PHASE 6 WITH AMPLITUDE MORE THAN 1. THE EQUATORIAL WAVES PREDICTION INDICATES STRONG EASTERLY WINDS (5-7 MPS) OVER SOUTH & ADJOINING CENTRAL BAY OF BENGAL, STRONG WESTERLY WINDS (5-7 MPS) OVER SOUTH & ADJOINING EAST EQUATORIAL INDIAN OCEAN, LOW FREQUENCY BACKGROUND WAVES OVER SOUTH BAY OF BENGAL ARE LIKELY TO PREVAIL DURING NEXT 3-4 DAYS, THUS FAVOURING ENHANCEMENT OF CONVECTIVE ACTIVITY OVER SOUTH BAY OF BENGAL. LOW LEVEL RELATIVE VORTICITY IS AROUND  $100 \times 10^{-6} \text{ S}^{-1}$  OVER THE SYSTEM CENTRE. LOW LEVEL CONVERGENCE IS ABOUT  $30 \times 10^{-5} \text{ S}^{-1}$  TO THE NORTHEAST OF SYSTEM CENTRE. UPPER LEVEL DIVERGENCE IS ABOUT  $40 \times 10^{-5} \text{ S}^{-1}$  TO THE NORTH-NORTHEAST OF SYSTEM CENTRE. LOW (15-20 KNOTS) VERTICAL WIND SHEAR IS PREVAILING AROUND SYSTEM AREA OVER SOUTHWEST BOB. CURRENT CONDITIONS INDICATE THAT THE SYSTEM IS IN A FAVORABLE ENVIRONMENT. HOWEVER, DUE TO INCREASE IN VERTICAL WIND SHEAR BEYOND 12°N/82°E, FURTHER INTENSIFICATION INTO A CYCLONIC STORM IS NOT LIKELY.

MOST OF THE MODELS (GFS & NCUM GROUP, IMD MME AND ECMWF) ARE INDICATING EXISTING DEPRESSION OVER SOUTHWEST BAY OF BENGAL TO MOVE NORTH-NORTHWESTWARDS TILL BY 23<sup>RD</sup> /0000 UTC OVER SOUTHWEST BAY OF BENGAL. THEREAFTER, MODELS ARE INDICATING GRADUAL WEST-SOUTHWESTWARDS MOVEMENT OF THE SYSTEM REACHING COMORIN AREA BY 26<sup>TH</sup>/0000 UTC. MODELS ARE NOT INDICATING FURTHER INTENSIFICATION OF THE SYSTEM. OVER THE ARABIAN SEA, MODELS ARE INDICATING THE SYSTEM TO MOVE WEST-NORTHWESTWARDS AND WEAKEN GRADUALLY.

IN VIEW OF ALL THE ABOVE, THE DEPRESSION OVER SOUTHWEST BAY OF BENGAL IS LIKELY TO CONTINUE TO MOVE NORTHWESTWARDS FOR SOME MORE TIME AND GRADUALLY RECURVE WEST-SOUTHWESTWARDS FROM 23<sup>RD</sup> MORNING TOWARDS COMORIN AREA ACROSS SRI LANKA DURING SUBSEQUENT 48 HOURS.

M. SHARMA  
SCIENTIST-D  
RSMC, NEW DELHI

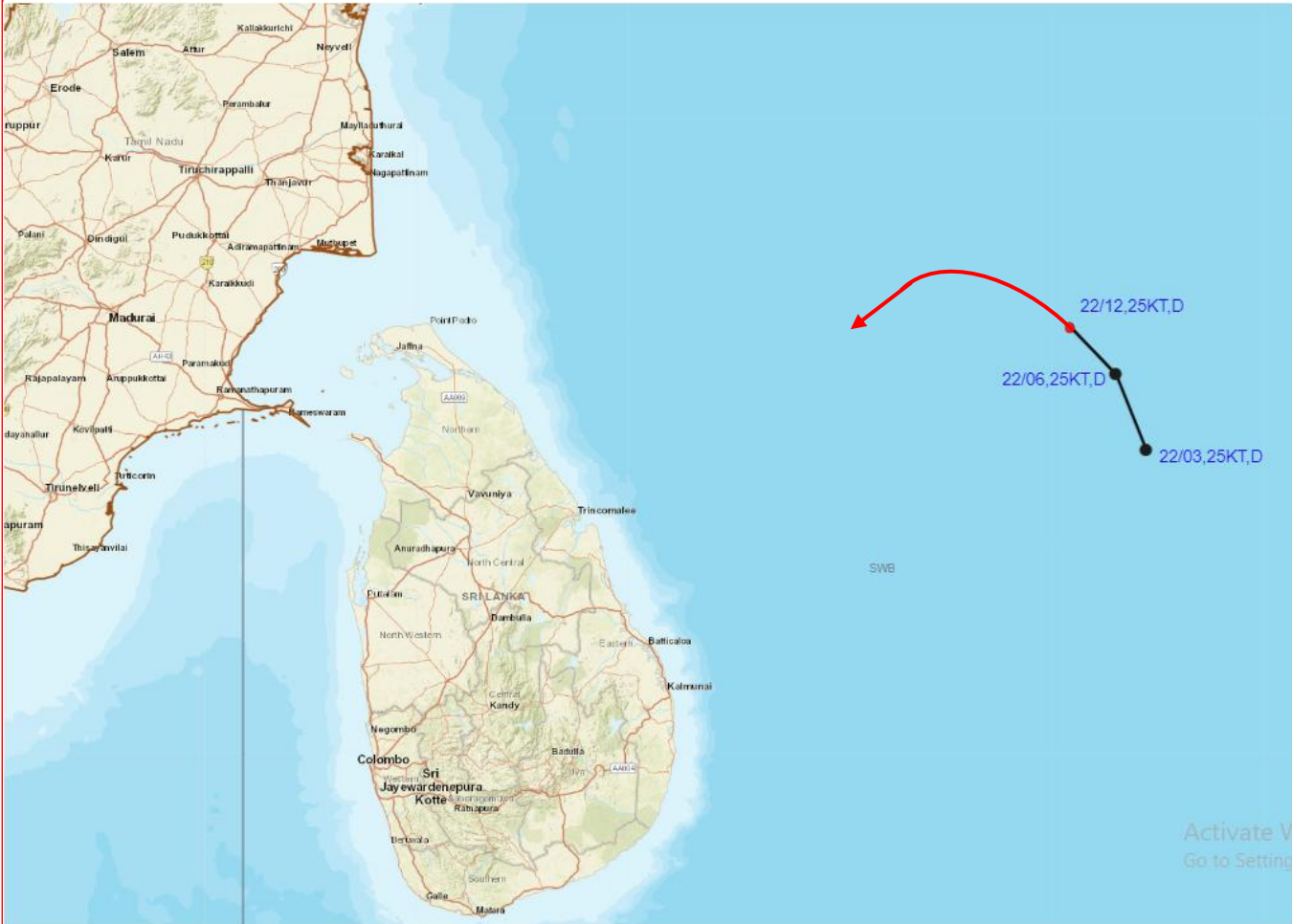




Cloud distribution: (a) Isolated: <25%, Scattered:25-50%, Broken: 51-75%, Solid:>75%, Convection Intensity: (a) Weak: Cloud Top Temperature (CTT) >-25°C, (b) Moderate: CTT: - 25°C to -40°C, (c) Intense: CTT: - 41°C to -70°C and (d) Very Intense: : Less than -70°C  
PROBABILITY OF CYCLOGENESIS (FORMATION OF DEPRESSION): NIL: 0%, LOW: 1-33%, , MODERATE: 34-66% AND HIGH: 67-100%  
This is a guidance Bulletin for WMO/ESCAP Panel Member countries. Visit respective National websites for Country specific Bulletins



# OBSERVED AND FORECAST TRACK OF DEPRESSION OVER SOUTHWEST BAY OF BENGAL BASED ON 1200 UTC OF 22<sup>nd</sup> DECEMBER, 2022



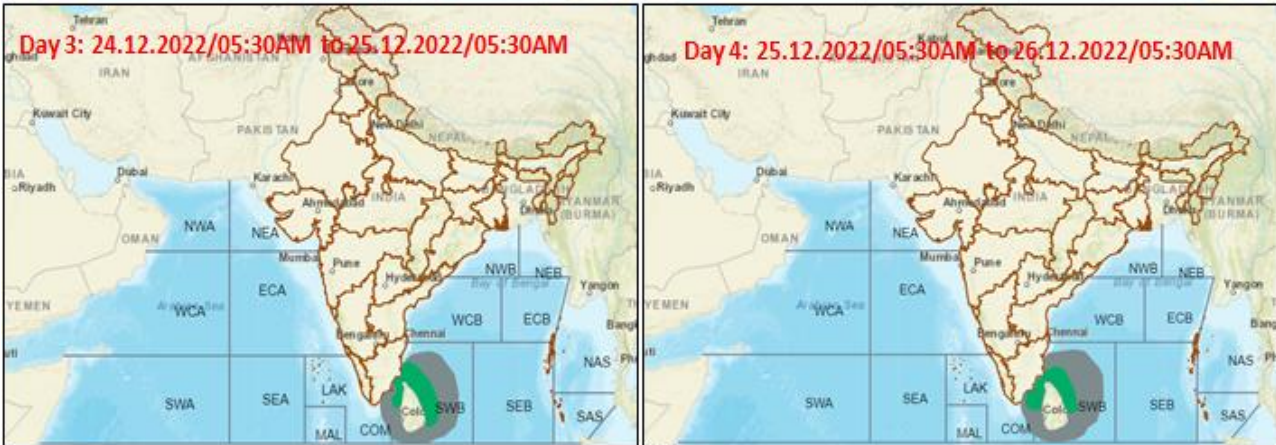
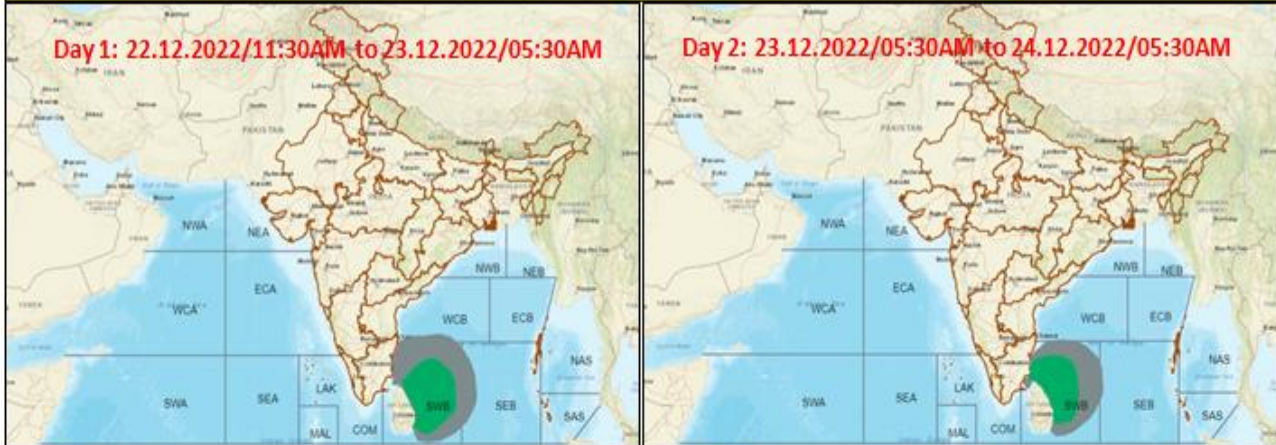
**DATE/TIME IN UTC**  
**IST=UTC + 0530**  
**L: LOW PRESSURE AREA**  
**WML: WELL MARKED LOW PRESSURE AREA**  
**D: DEPRESSION (17-27 KT)**  
**DD: DEEP DEPRESSION (28-33 KT)**  
**CS: CYCLONIC STORM (34-47 KT)**  
**SCS: SEVERE CYCLONIC STORM (48-63KT)**  
**VSCS: VERY SEVERE CYCLONIC STORM (64-89 KT)**  
**ESCS: EXTREMELY SEVERE CYCLONIC STORM (90-119 KT)**  
**SuCS: SUPER CYCLONIC STORM ( $\geq$  120 KT)**

- LESS THAN 34 KT
- 34-47 KT
- $\geq$  48 KT
- OBSERVED TRACK
- FORECAST TRACK
- CONE OF UNCERTAINTY

Cloud distribution: (a) Isolated: <25%, Scattered:25-50%, Broken: 51-75%, Solid:>75%, Convection Intensity: (a) Weak: Cloud Top Temperature (CTT) >-25°C, (b) Moderate: CTT: - 25°C to -40°C, (c) Intense: CTT: - 41°C to -70°C and (d) Very Intense: : Less than -70°C  
**PROBABILITY OF CYCLOGENESIS (FORMATION OF DEPRESSION): NIL: 0%, LOW: 1-33%, , MODERATE: 34-66% AND HIGH: 67-100%**  
 This is a guidance Bulletin for WMO/ESCAP Panel Member countries. Visit respective National websites for Country specific Bulletins



## Fishermen warning graphics



Squally WX with wind speed 40-50 kmph gusting to 60 kmph
Squally wind speed 45-55 kmph gusting to 65 kmph

Fishermen are advised not to venture into the marked areas.

Cloud distribution: (a) Isolated: <25%, Scattered:25-50%, Broken: 51-75%, Solid:>75%, Convection Intensity: (a) Weak: Cloud Top Temperature (CTT) >-25°C, (b) Moderate: CTT: - 25°C to -40°C, (c) Intense: CTT: - 41°C to -70°C and (d) Very Intense: : Less than -70°C  
 PROBABILITY OF CYCLOGENESIS (FORMATION OF DEPRESSION): NIL: 0%, LOW: 1-33%, , MODERATE: 34-66% AND HIGH: 67-100%  
 This is a guidance Bulletin for WMO/ESCAP Panel Member countries. Visit respective National websites for Country specific Bulletins