



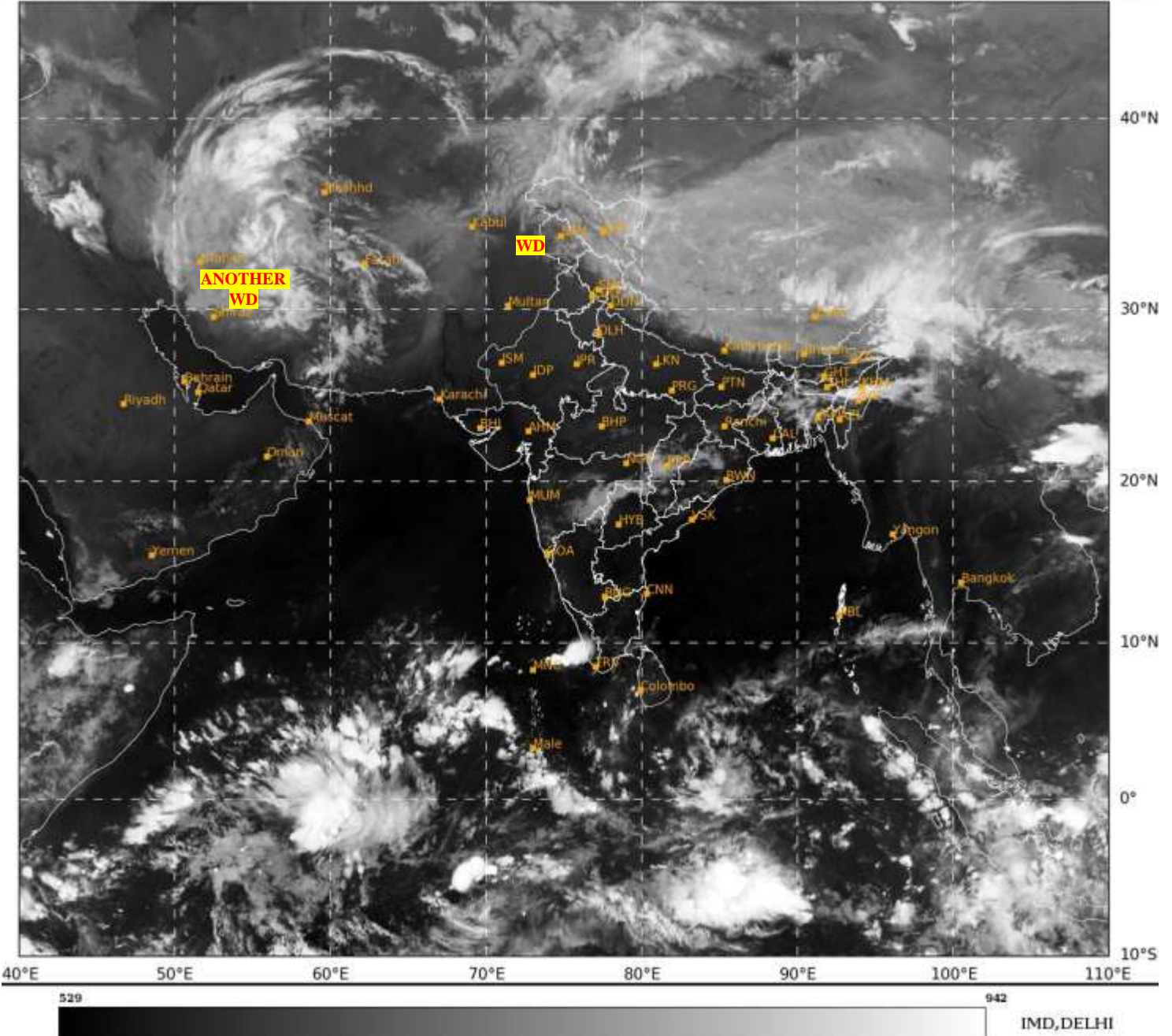
भारत मौसम विज्ञान विभाग  
पृथ्वी विज्ञान मंत्रालय  
India Meteorological Department  
Ministry of Earth Sciences



**SATELLITE BULLETIN BASED ON SATELLITE  
IMAGERIES AND PRODUCTS**  
**23.04.2024 TIME 2100 UTC**

SAT : INSAT-3DR IMG  
IMG\_TIR1 10.8 um  
LIC Mercator

23-04-2024/(2215 to 2242) GMT  
24-04-2024/(0345 to 0412) IST



TCIN50 DEMS 232100

SATELLITE BULLETIN BASED ON INSAT-3DR PIC OF 232215 UTC (.)

REGION COVERED BETWEEN LAT 50.0°N TO 35.0°S AND LONG 30.0°E TO 125.0°E (.)

**SALIENT FEATURES:-**

**WESTERN DISTURBANCE:-**

SCT MULTILAYERED CLOUDS OVER N PAK J&K LADAKH HP UTRKND PJB AND N/HOOD IN ASSW **WD** OVER THE AREA (.)

SCT MULTILAYERED CLOUDS OVER S CASPIAN SEA IRAN AND N/HOOD IN ASSW **ANOTHER WD** OVER THE AREA (.)

**CONVECTIVE / THUNDERSTORM ACTIVITY:-**

MODERATE TO INTENSE CONVECTIVE / THUNDERSTORM ACTIVITY OBSERVED OVER ARUPR E ASSAM S NAGA ADJ N MANI S ASSAM & E MEGHA S KER (MINIMUM **CTT MINUS 60-65 DEG CEL**) (.)



INSAT-3DR 23-APR-2024 17:15 WV IMG

WATER VAPOUR WIND

(1Kt = 0.5 m/s)

10 Kt

15 Kt

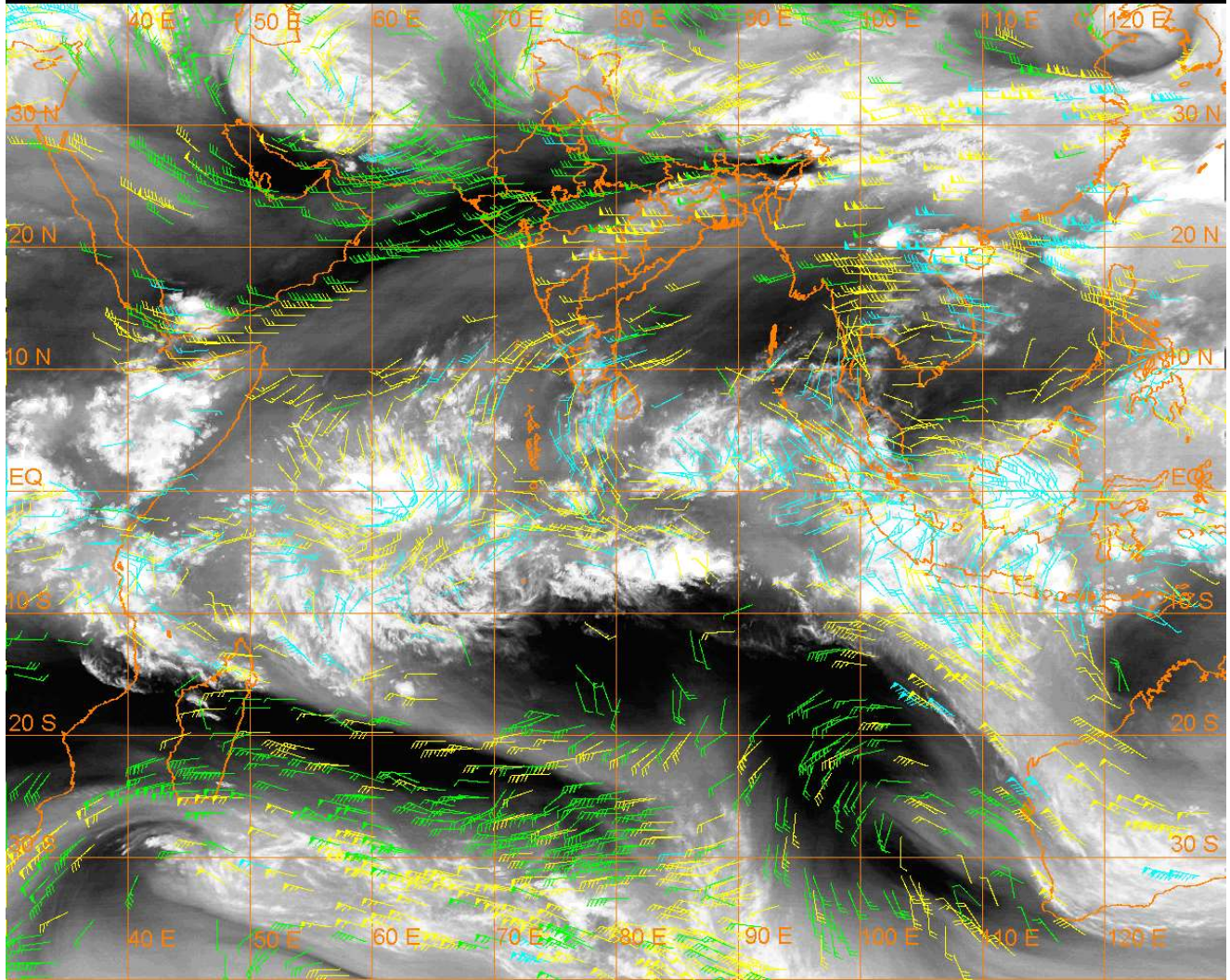
20 Kt

50 Kt

100-250 hPa

251-350 hPa

351-500 hPa



### CLOUDS DESCRIPTION WITHIN INDIA:-

#### NORTH:-

SCT LOW/MED CLOUDS WITH EMBDD ISOL WK TO MOD CONVTN OVER LADAKH J&K N HP N UTRKND N PJB (.) SCT LOW/MED CLOUDS OVER UP (.)

#### EAST:-

SCT LOW/MED CLOUDS WITH EMBDD MOD TO INT CONVTN OVER ARUPR E ASSAM S NAGA ADJ N MANI S ASSAM & E MEGHA (.) SCT LOW/MED CLOUDS WITH EMBDD ISOL WK TO MOD CONVTN OVER EXT SE BHR JHRKND CHTGH ORS N GWB SHWB SKM REST NE STATES & BD (.) ISOL TO SCT LOW/MED CLOUDS OVER REST BHR S GWB (.)

#### WEST:-

SCT LOW/MED CLOUDS WITH EMBDD ISOL WK TO MOD CONVTN OVER SE MP MAHA (.) SCT LOW/MED CLOUDS OVER RAJ REST MP (.)

#### SOUTH:-

SCT LOW/MED CLOUDS WITH EMBDD MOD TO INT CONVTN OVER S KER (.) SCT LOW/MED CLOUDS WITH EMBDD WK CONVTN OVER NE NIK N TLNGN (.) SCT LOW/MED CLOUDS OVER REST KRNTK COTL AP N KER TN LKSDP ILS ANDAMAN & NICOBAR ILS (.)

#### ARABIAN SEA:-

SCT LOW/MED CLOUDS WITH EMBDD INT TO V INT CONVTN OVER SOUTH ARSEA SOUTH PARTS OF LKSDP ILS AREA (.) SCT LOW/MED CLOUDS WITH EMBDD ISOL MOD TO INT CONVTN OVER COMORIN AREA AND ISOL WK TO MOD CONVTN OVER NW ARSEA (.)

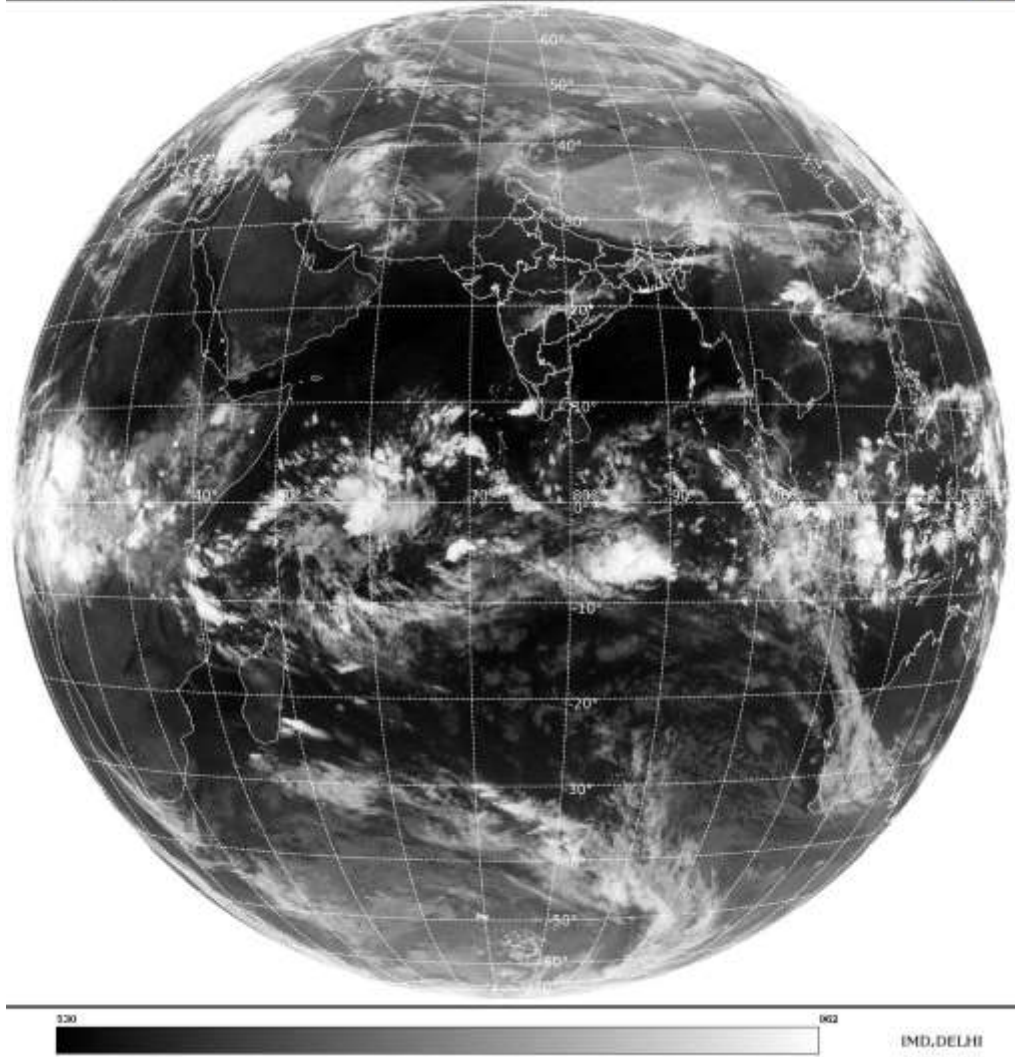
#### BAY OF BENGAL & ANDAMAN SEA:-

SCT LOW/MED CLOUDS WITH EMBDD ISOL MOD TO INT CONVTN OVER SOUTH BAY AND ANDAMAN SEA (.)

**CLOUDS DESCRIPTION OUTSIDE INDIA:-**

SAT : INSAT-3DR IMG  
Thermal Infrared1 Count 10.8 um  
L1B FULL DISK

23-04-2024/(2215 to 2242) GMT  
24-04-2024/(0345 to 0412) IST



**SCT LOW/MED CLOUDS WITH EMBDD MOD TO INT CONVTN OVER PALK STR GULF OF MANNAR MALDIVES TIBET CHINA YELLOW SEA EAST CHINA SEA TAIWAN N MYANMAR GULF OF THAILAND LAOS N VIETNAM GULF OF TONKIN HAINAN SUMATRA STR OF MALACCA MALAYSIA BORNEO SOUTH CHINA SEA JAVA ILS & SEA CELEBES ILS & SEA PHILIPPINES SULU SEA N MADAGASCAR N MOZAMBIQUE CHANNEL AND OVER INDIAN OCEAN BET LAT 5.0N TO 20.0S LONG 40.0E TO 120.0E AND BET LAT 20.0S TO 35.0S LONG 40.0E TO 95.0E (.)**

**TOO 24/0445 HRS IST=**

**NNNN**

**LEGEND:-**

|                               |              |  |
|-------------------------------|--------------|--|
| <b>REGION</b>                 | <b>NORTH</b> | <b>J&amp;K HP PJB HARY DLH UP UTRKND</b>                     |
|                               | <b>EAST</b>  | <b>BHR JHRKND CHTGH ORS WB SKM NORTH- EAST STATES</b>        |
|                               | <b>WEST</b>  | <b>RAJ MP GUJ MAHA GOA</b>                                   |
|                               | <b>SOUTH</b> | <b>TLNGN AP KRNTK KER TN LKSDP ANDAMAN &amp; NICOBAR ILS</b> |
| <b>CLOUD DISTRIBUTION</b>     | <b>ISOL</b>  | <b>ISOLATED (LESS THAN 25%)</b>                              |
|                               | <b>SCT</b>   | <b>SCATTERED (25 TO 50%)</b>                                 |
|                               | <b>BKN</b>   | <b>BROKEN (51 TO 75%)</b>                                    |
|                               | <b>SLD</b>   | <b>SOLID (GREATER THAN 75%)</b>                              |
| <b>CLOUDS TOP TEMPERATURE</b> | <b>CTT</b>   | <b>CLOUD TOP TEMPERATURE</b>                                 |

|   |                      |   |   |
|---|----------------------|---|---|
| <b>CONVECTION</b>   | <b>WK CONVNTN</b>    | <b>WEAK CONVECTION<br/>(CTT GREATER THAN -25°C)</b>         |   |
|   | <b>MOD CONVNTN</b>   | <b>MODERATE CONVECTION<br/>(CTT BETWEEN -25°C TO -40°C)</b> |   |
|   | <b>INT CONVNTN</b>   | <b>INTENSE CONVECTION<br/>(CTT BETWEEN -41°C TO -70°C)</b>  |   |
|   | <b>V INT CONVNTN</b> | <b>VERY INTENSE CONVECTION<br/>(CTT LESS THAN -70°C)</b>    |   |
| <b>METEOROLOGICAL<br/>SUB- DIVISIONS,<br/>STATES &amp; UNION<br/>TERITORIES</b> | <b>ARUPR</b>         | <b>ARUNACHAL PRADESH</b>                                    |   |
|   | <b>BHR</b>           | <b>BIHAR</b>  |   |
|   | <b>CHTGH</b>         | <b>CHHATTISGARH</b>   |   |
|   | <b>COTL AP</b>       | <b>COASTAL ANDHRA PRADESH</b>                               |   |
|   | <b>COTL KRNTK</b>    | <b>COASTAL KARNATAKA</b>                                    |   |
|   | <b>COTL ORS</b>      | <b>COASTAL ORISSA</b>                                       |   |
|   | <b>GUJ</b>           | <b>GUJARAT</b>  |   |
|   | <b>GWB</b>           | <b>GANGETIC WEST BENGAL</b>                                 |   |
|   | <b>HARY</b>          | <b>HARYANA</b>  |   |
|   | <b>DLH</b>           | <b>DELHI</b>  |   |
|   | <b>HP</b>            | <b>HIMACHAL PRADESH</b>                                     |   |
|   | <b>J&amp;K</b>       | <b>JAMMU AND KASHMIR</b>                                    |   |
|   | <b>JHRKND</b>        | <b>JHARKHAND</b>  |   |
|   | <b>KER</b>           | <b>KERALA</b>   |   |
|   | <b>KKN</b>           | <b>KONKAN</b>   |   |
|   | <b>LKSDP</b>         | <b>LAKSHADWEEP</b>  |   |
|   | <b>M MAHA</b>        | <b>MADHYA MAHARASHTRA</b>                                   |   |
|   | <b>MAHA</b>          | <b>MAHARASHTRA</b>  |   |
|   | <b>MANI</b>          | <b>MANIPUR</b>  |   |
|   | <b>MEGHA</b>         | <b>MEGHALAYA</b>  |   |
|   | <b>MIZO</b>          | <b>MIZORAM</b>  |   |
|   | <b>MP</b>            | <b>MADHYA PRADESH</b>                                       |   |
|   |                      | <b>MRTHWD</b>   | <b>MARATHWADA</b>                       |
|   |                      | <b>NAGA</b>   | <b>NAGALAND</b>                         |
|   |                      | <b>N COTL AP</b>  | <b>NORTH COASTAL ANDHRA<br/>PRADESH</b> |
|   |                      | <b>NIK</b>  | <b>NORTH INTERIOR KARNATAKA</b>         |
| <b>ORS</b>  |                      | <b>ORISSA</b>   |   |
| <b>PJB</b>  |                      | <b>PUNJAB</b>   |   |
| <b>RAJ</b>  |                      | <b>RAJASTHAN</b>  |   |
| <b>RYLSM</b>  |                      | <b>RAYALASEEMA</b>  |   |
| <b>SAU &amp; KUTCH</b>  |                      | <b>SAURASHTRA &amp; KUTCH</b>                               |   |
| <b>SHWB</b>   |                      | <b>SUB-HIMALAYAN WEST BENGAL</b>                            |   |
| <b>SIK</b>  |                      | <b>SOUTH INTERIOR KARNATAKA</b>                             |   |
| <b>SKM</b>  |                      | <b>SIKKIM</b>   |   |
| <b>TLNGN</b>  |                      | <b>TELANGANA</b>  |   |
| <b>TN</b>   |                      | <b>TAMIL NADU</b>   |   |
| <b>TRP</b>  |                      | <b>TRIPURA</b>  |   |
| <b>UP</b>   |                      | <b>UTTAR PRADESH</b>  |   |
| <b>UTRKND</b>   |                      | <b>UTTARAKHAND</b>  |   |
| <b>VID</b>  |                      | <b>VIDHARBHA</b>  |   |

|                      |               |                                  |
|----------------------|---------------|----------------------------------|
|                      | <b>SHWB</b>   | <b>SUB HIMALAYAN WEST BENGAL</b> |
|                      | <b>GWB</b>    | <b>GANGETIC WEST BENGAL</b>      |
|                      | <b>ARSEA</b>  | <b>ARABIAN SEA</b>               |
|                      | <b>ILS</b>    | <b>ISLANDS</b>                   |
| <b>MISCELLANEOUS</b> | <b>ASSW</b>   | <b>IN ASSOCIATION WITH</b>       |
|                      | <b>ASSTD</b>  | <b>ASSOCIATED</b>                |
|                      | <b>LLC</b>    | <b>LOW LEVEL CIRCULATION</b>     |
|                      | <b>EMBDD</b>  | <b>EMBEDDED</b>                  |
|                      | <b>N/HOOD</b> | <b>NEIGHBOURHOOD</b>             |
|                      | <b>EXT</b>    | <b>EXTREME</b>                   |