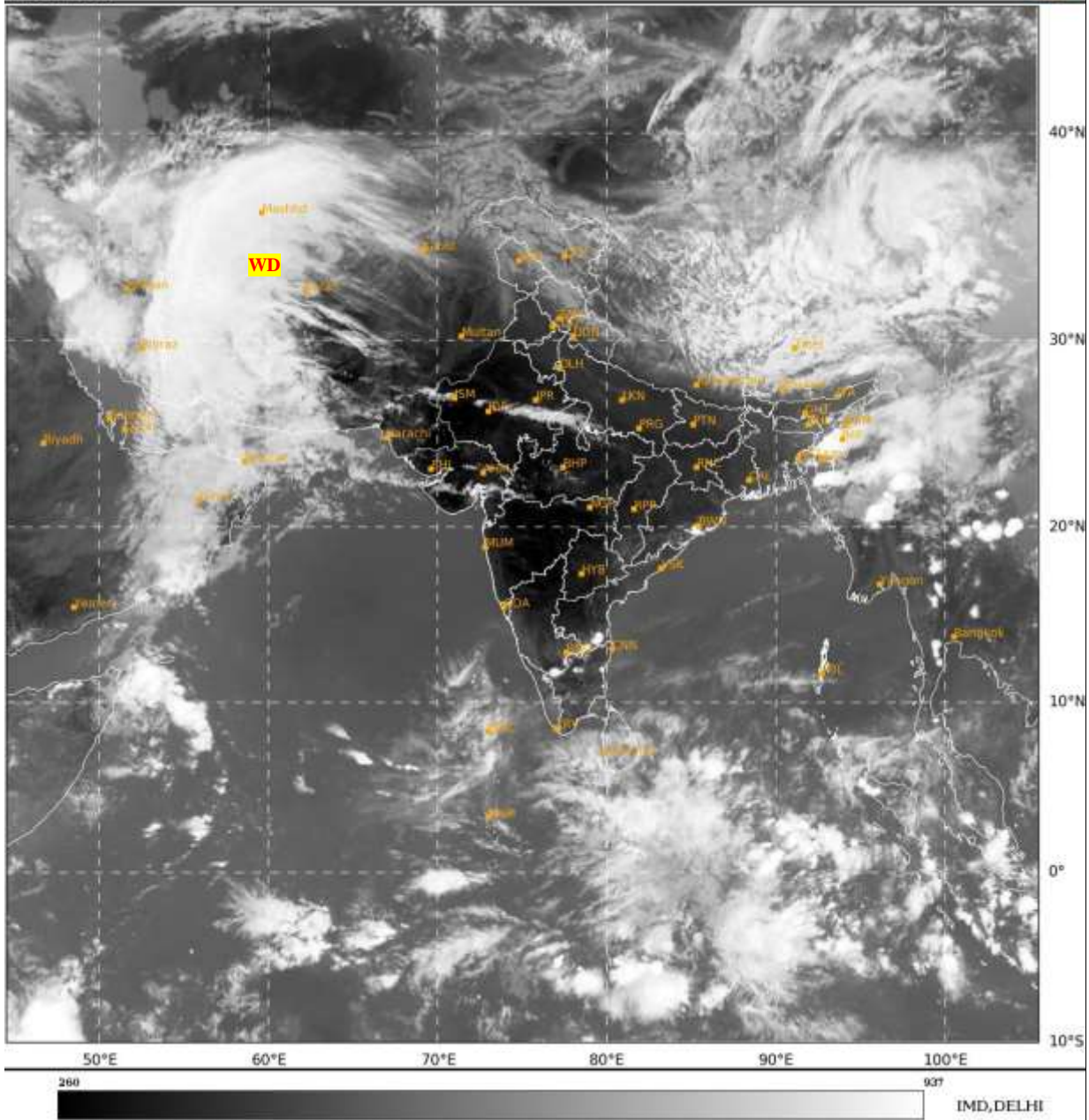




**SATELLITE BULLETIN BASED ON SATELLITE  
IMAGERIES AND PRODUCTS**  
**02.05.2024 TIME 0900 UTC**

SAT : INSAT-3D IMG  
IMG\_TIR1 10.8 um  
LIC Mercator

02-05-2024/(0900 to 0926) GMT  
02-05-2024/(1430 to 1456) IST



TCIN50 DEMS 020900

SATELLITE BULLETIN BASED ON INSAT-3D PIC OF 020900 UTC (.)

REGION COVERED BETWEEN LAT 50.0°N TO 35.0°S AND LONG 30.0°E TO 125.0°E (.)

**SALIENT FEATURES:-**

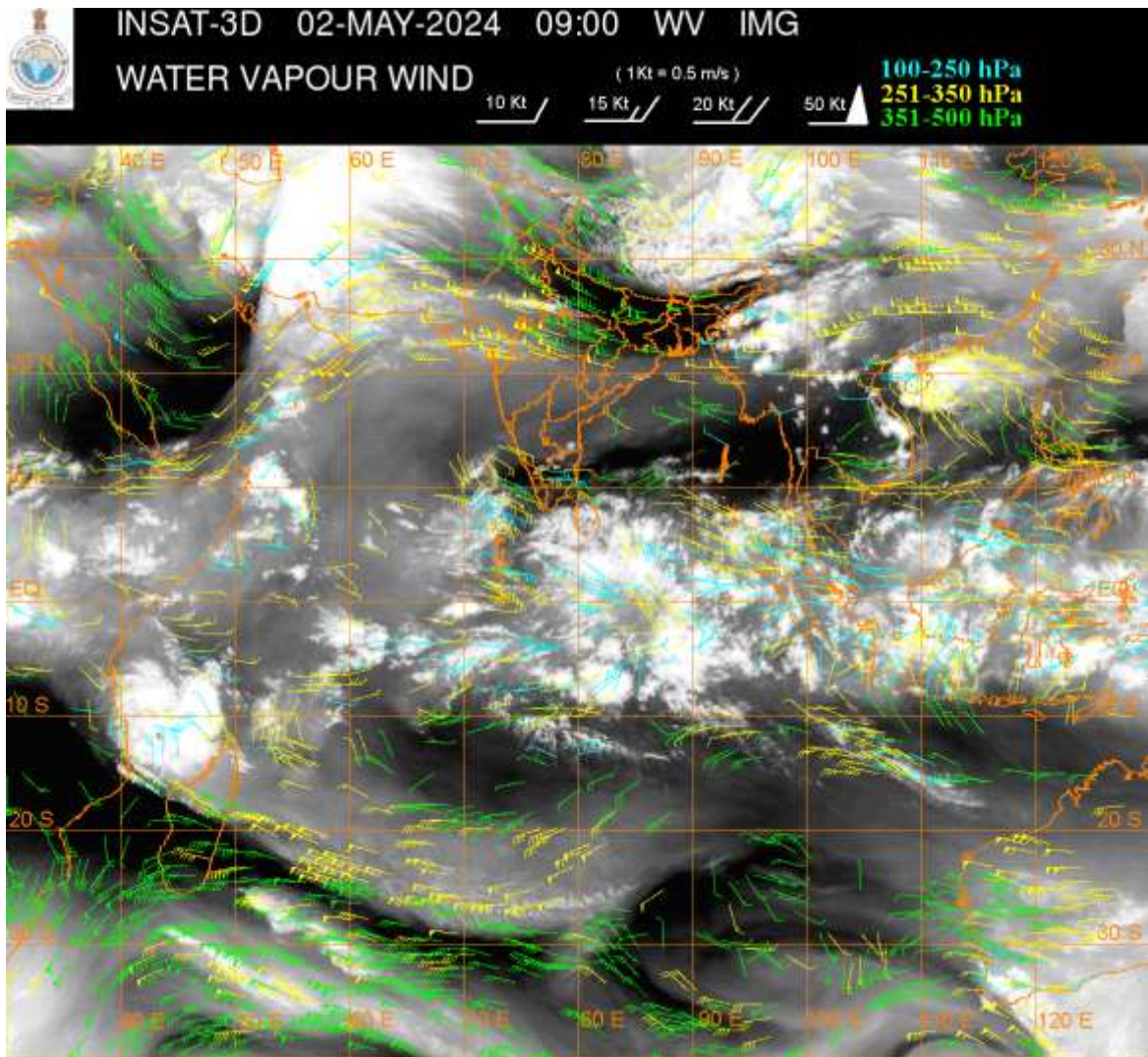
**WESTERN DISTURBANCE:-**

SCT MULTILAYERED CLOUDS OVER IRAN PERSIAN GULF AND N/HOOD IN ASSW **WD** OVER THE AREA (.)

**CONVECTIVE / THUNDERSTORM ACTIVITY:-**

INTENSE TO VERY INTENSE CONVECTIVE / THUNDERSTORM ACTIVITY OBSERVED OVER EXT N TN ADJ SIK S RYLSM (MINIMUM **CTT MINUS 79 DEG CEL**) EXT S ASSAM MANI N MIZO N TRP (MINIMUM **CTT MINUS 89 DEG CEL**) (.)

MODERATE TO INTENSE CONVECTIVE / THUNDERSTORM ACTIVITY OBSERVED OVER COTL ORS (MINIMUM **CTT MINUS 70 DEG CEL**) ARUPR (MINIMUM **CTT MINUS 65 DEG CEL**) (.)



**CLOUDS DESCRIPTION WITHIN INDIA:-**

**NORTH:-**

SCT LOW/MED CLOUDS WITH EMBDD ISOL WK TO MOD CONVTN OVER NE LADAKH N UTRKND (.) ISOL TO SCT LOW/MED CLOUDS OVER J&K HP S UTRKND (.)

**EAST:-**

SCT LOW/MED CLOUDS WITH EMBDD INT TO V INT CONVTN OVER EXT S ASSAM MANI N MIZO N TRP (MINIMUM **CTT MINUS 89 DEG CEL**) (.) SCT LOW/MED CLOUDS WITH EMBDD MOD TO INT CONVTN OVER COTL ORS ARUPR (.) SCT LOW/MED CLOUDS WITH EMBDD WK TO MOD CONVTN OVER SKM REST NE STATES & BD (.) SCT LOW/MED CLOUDS OVER S CHTGH REST ORS S GWB (.)

**WEST:-**

SCT LOW/MED CLOUDS WITH EMBDD WK TO MOD CONVTN OVER CENTRAL RAJ GUJ NW MP (.) ISOL TO SCT LOW/MED CLOUDS OVER REST RAJ REST MP (.)

**SOUTH:-**

SCT LOW/MED CLOUDS WITH EMBDD INT TO V INT CONVTN OVER EXT N TN ADJ SIK S RYLSM (MINIMUM **CTT MINUS 79 DEG CEL**) (.) SCT LOW/MED CLOUDS WITH EMBDD WK TO MOD CONVTN OVER N KER REST N TN LKSDP ANDAMAN & NICOBAR ILS (.) SCT LOW/MED CLOUDS OVER SIK E TLNGN REST RYLSM COTL AP REST KER REST TN (.)

**ARABIAN SEA:-**

SCT LOW/MED CLOUDS WITH EMBDD INT TO V INT CONVTN OVER SW ARSEA AND SC ARSEA (.) SCT LOW/MED CLOUDS WITH EMBDD MOD TO INT CONVTN OVER N ARSEA SE ARSEA MALDIVES LKSDP & COMORIN AREA (.)

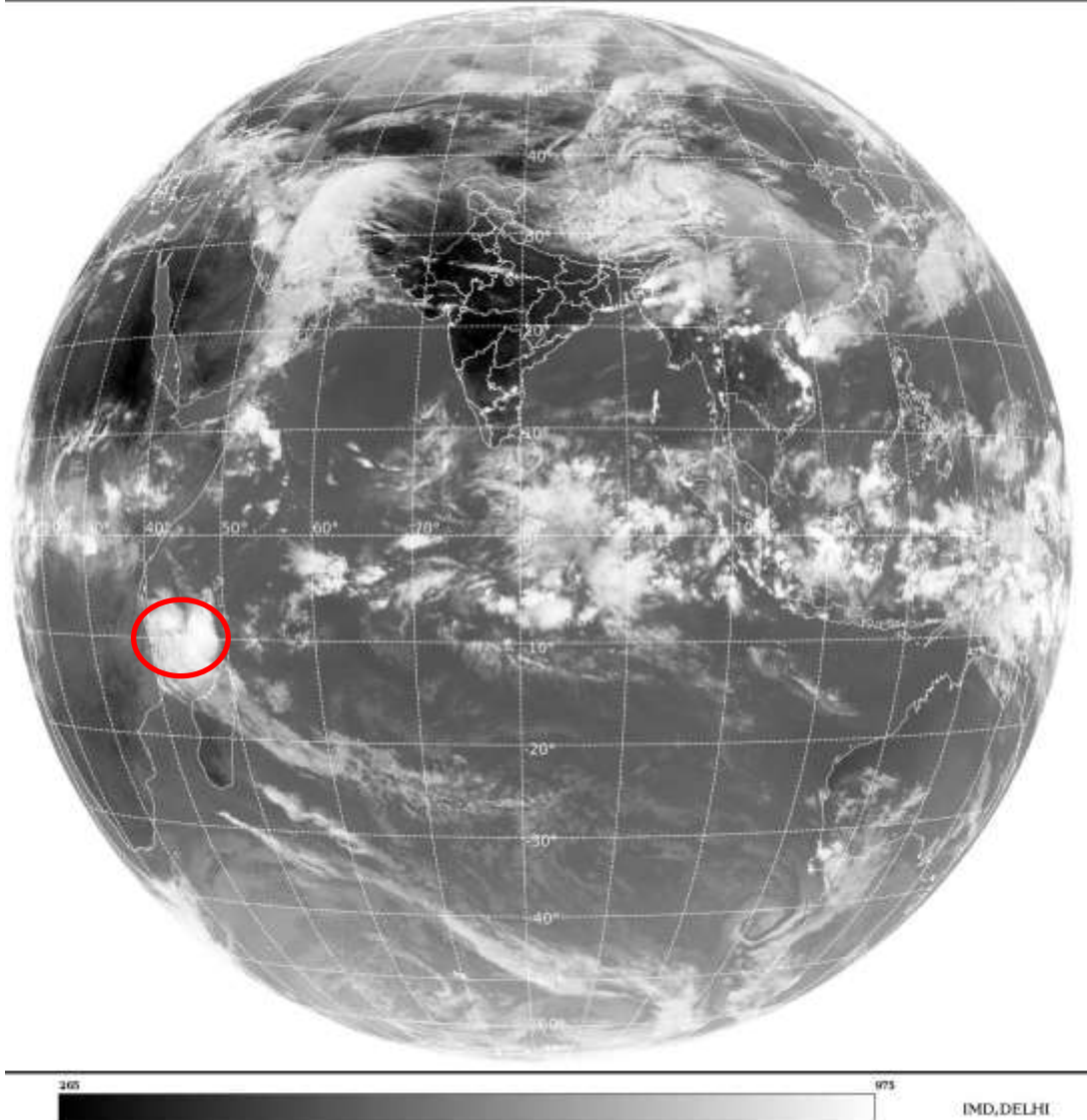
**BAY OF BENGAL & ANDAMAN SEA:-**

SCT LOW/MED CLOUDS WITH EMBDD INT TO V INT CONVTN OVER SOUTH BAY SOUTH OF LAT 8.0N & ADJ EQUATORIAL INDIAN OCEAN (.) SCT LOW/MED CLOUDS WITH EMBDD MOD TO INT CONVTN OVER S ANDAMAN SEA AND WK TO MOD CONVTN OVER REST BAY (.)

**CLOUDS DESCRIPTION OUTSIDE INDIA:-**

SAT : INSAT-3D IMG  
Thermal Infrared1 Count 10.8 um  
L1B FULL DISK

02-05-2024/(0900 to 0926) GMT  
02-05-2024/(1430 to 1456) IST



**VORTEX (HIDAYA) OVER SOUTH INDIAN OCEAN:-**

**VORTEX (HIDAYA) OVER SOUTH INDIAN OCEAN (AREA D15) WITH CENTERED 8.9S / 44.2E (.) INTENSITY T3.0/3.0 (.) ASSOCIATED MAXIMUM SUSTAINED WINDS OF 34-47 KTS (.) ASSTD SCT TO BKN LOW/MED CLOUDS WITH EMBDD INT TO V INT CONVTN OVER AREA BET LAT 7.0S TO 15.0S LONG 40.0E TO 49.0E (.)**

**SCT LOW/MED CLOUDS WITH EMBDD MOD TO INT CONVTN OVER MALDIVES TIBET CHINA EAST CHINA SEA MYANMAR GULF OF TONKIN HAINAN SUMATRA STR OF MALACCA MALAYSIA BORNEO SOUTH CHINA SEA JAVA ILS & SEA CELEBES ILS & SEA PHILIPPINES SULU SEA NORTH MADAGASCAR NORTH MOZAMBIQUE CHANNEL AND OVER INDIAN OCEAN BET LAT 5.0N TO 15.0S LONG 40.0E TO 110.0E AND BET LAT 15.0S TO 30.0S LONG 50.0E TO 82.5E (.)**

TOO 02/1530 HRS IST=

NNNN

**LEGEND:-**

REGION	NORTH	J&K HP PJB HARY DLH UP UTRKND
	EAST	BHR JHRKND CHTGH ORS WB SKM NORTH- EAST STATES
	WEST	RAJ MP GUJ MAHA GOA
	SOUTH	TLNGN AP KRNTK KER TN LKSDP ANDAMAN & NICOBAR ILS
	ISOL	ISOLATED (LESS THAN 25%)

<b>CLOUD DISTRIBUTION</b>	<b>SCT</b>	<b>SCATTERED (25 TO 50%)</b>	
	<b>BKN</b>	<b>BROKEN (51 TO 75%)</b>	
	<b>SLD</b>	<b>SOLID (GREATER THAN 75%)</b>	
<b>CLOUDS TOP TEMPERATURE</b>	<b>CTT</b>	<b>CLOUD TOP TEMPERATURE</b>	
<b>CONVECTION</b>	<b>WK CONVTN</b>	<b>WEAK CONVECTION (CTT GREATER THAN <math>-25^{\circ}\text{C}</math>)</b>	
	<b>MOD CONVTN</b>	<b>MODERATE CONVECTION (CTT BETWEEN <math>-25^{\circ}\text{C}</math> TO <math>-40^{\circ}\text{C}</math>)</b>	
	<b>INT CONVTN</b>	<b>INTENSE CONVECTION (CTT BETWEEN <math>-41^{\circ}\text{C}</math> TO <math>-70^{\circ}\text{C}</math>)</b>	
	<b>V INT CONVTN</b>	<b>VERY INTENSE CONVECTION (CTT LESS THAN <math>-70^{\circ}\text{C}</math>)</b>	
<b>METEOROLOGICAL SUB- DIVISIONS, STATES &amp; UNION TERRITORIES</b>	<b>ARUPR</b>	<b>ARUNACHAL PRADESH</b>	
	<b>BHR</b>	<b>BIHAR</b>	
	<b>CHTGH</b>	<b>CHHATTISGARH</b>	
	<b>COTL AP</b>	<b>COASTAL ANDHRA PRADESH</b>	
	<b>COTL KRNTK</b>	<b>COASTAL KARNATAKA</b>	
	<b>COTL ORS</b>	<b>COASTAL ORISSA</b>	
	<b>GUJ</b>	<b>GUJARAT</b>	
	<b>GWB</b>	<b>GANGETIC WEST BENGAL</b>	
	<b>HARY</b>	<b>HARYANA</b>	
	<b>DLH</b>	<b>DELHI</b>	
	<b>HP</b>	<b>HIMACHAL PRADESH</b>	
	<b>J&amp;K</b>	<b>JAMMU AND KASHMIR</b>	
	<b>JHRKND</b>	<b>JHARKHAND</b>	
	<b>KER</b>	<b>KERALA</b>	
	<b>KKN</b>	<b>KONKAN</b>	
	<b>LKSDP</b>	<b>LAKSHADWEEP</b>	
	<b>M MAHA</b>	<b>MADHYA MAHARASHTRA</b>	
	<b>MAHA</b>	<b>MAHARASHTRA</b>	
	<b>MANI</b>	<b>MANIPUR</b>	
	<b>MEGHA</b>	<b>MEGHALAYA</b>	
	<b>MIZO</b>	<b>MIZORAM</b>	
	<b>MP</b>	<b>MADHYA PRADESH</b>	
		<b>MRTHWD</b>	<b>MARATHWADA</b>
		<b>NAGA</b>	<b>NAGALAND</b>
		<b>N COTL AP</b>	<b>NORTH COASTAL ANDHRA PRADESH</b>
		<b>NIK</b>	<b>NORTH INTERIOR KARNATAKA</b>
<b>ORS</b>		<b>ORISSA</b>	
<b>PJB</b>		<b>PUNJAB</b>	
<b>RAJ</b>		<b>RAJASTHAN</b>	
<b>RYLSM</b>		<b>RAYALASEEMA</b>	
<b>SAU &amp; KUTCH</b>		<b>SAURASHTRA &amp; KUTCH</b>	
<b>SHWB</b>		<b>SUB-HIMALAYAN WEST BENGAL</b>	
<b>SIK</b>		<b>SOUTH INTERIOR KARNATAKA</b>	
<b>SKM</b>		<b>SIKKIM</b>	
<b>TLNGN</b>		<b>TELANGANA</b>	

	<b>TN</b>	<b>TAMIL NADU</b>
	<b>TRP</b>	<b>TRIPURA</b>
	<b>UP</b>	<b>UTTAR PRADESH</b>
	<b>UTRKND</b>	<b>UTTARAKHAND</b>
	<b>VID</b>	<b>VIDHARBHA</b>
	<b>SHWB</b>	<b>SUB HIMALAYAN WEST BENGAL</b>
	<b>GWB</b>	<b>GANGETIC WEST BENGAL</b>
	<b>ARSEA</b>	<b>ARABIAN SEA</b>
	<b>ILS</b>	<b>ISLANDS</b>
<b>MISCELLANEOUS</b>	<b>ASSW</b>	<b>IN ASSOCIATION WITH</b>
	<b>ASSTD</b>	<b>ASSOCIATED</b>
	<b>LLC</b>	<b>LOW LEVEL CIRCULATION</b>
	<b>EMBDD</b>	<b>EMBEDDED</b>
	<b>N/HOOD</b>	<b>NEIGHBOURHOOD</b>
	<b>EXT</b>	<b>EXTREME</b>