



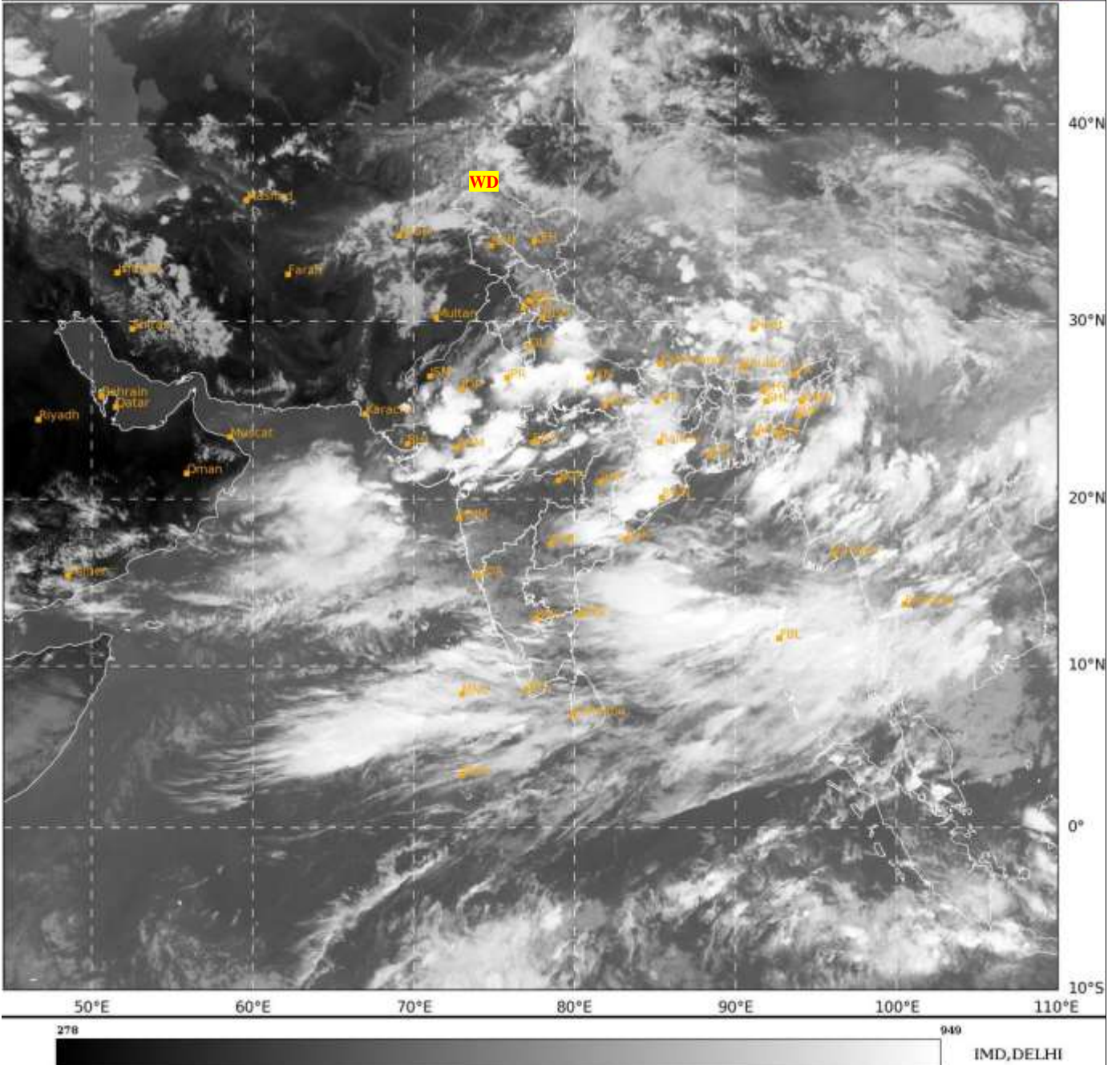
भारत मौसम विज्ञान विभाग  
पृथ्वी विज्ञान मंत्रालय  
India Meteorological Department  
Ministry of Earth Sciences



**SATELLITE BULLETIN BASED ON SATELLITE  
IMAGERIES AND PRODUCTS**  
**25.06.2024 TIME 1200 UTC**

SAT : INSAT-3DR IMG  
IMG\_TIR1 10.8 um  
LIC Mercator

25-06-2024/(1145 to 1212) GMT  
25-06-2024/(1715 to 1742) IST



TCIN50 DEMS 251200

SATELLITE BULLETIN BASED ON INSAT-3DR PIC OF 251145 UTC (.)

REGION COVERED BETWEEN LAT 50.0°N TO 35.0°S AND LONG 40.0°E TO 125.0°E (.)

**SALIENT FEATURES:-**

**WESTERN DISTURBANCE (WD):-**

SCT MULTILAYERED CLOUDS OVER E AFGAN ADJ PAK J&K LADAKH AND N/HOOD IN ASSW  
**WD** OVER THE AREA (.)

**CONVECTIVE / THUNDERSTORM ACTIVITY:-**

INTENSE TO VERY INTENSE CONVECTIVE / THUNDERSTORM ACTIVITY OBSERVED OVER e  
UTRKN D UP BHR SE JHRKN D MP NE & S RAJ GUJ N MADHYA MAHA S CHTGH ORS SW GWB  
ASSAM MEGHA TRP N COTL AP S KER LKSDP ILS AREA ANDAMAN & NICOBAR ILS AREA  
(MINIMUM **CTT MINUS 75-93 DEG CEL**) (.)

MODERATE TO INTENSE CONVECTIVE / THUNDERSTORM ACTIVITY OBSERVED OVER N





**WATER VAPOUR WIND**

(1Kt = 0.5 m/s)

10 Kt

15 Kt

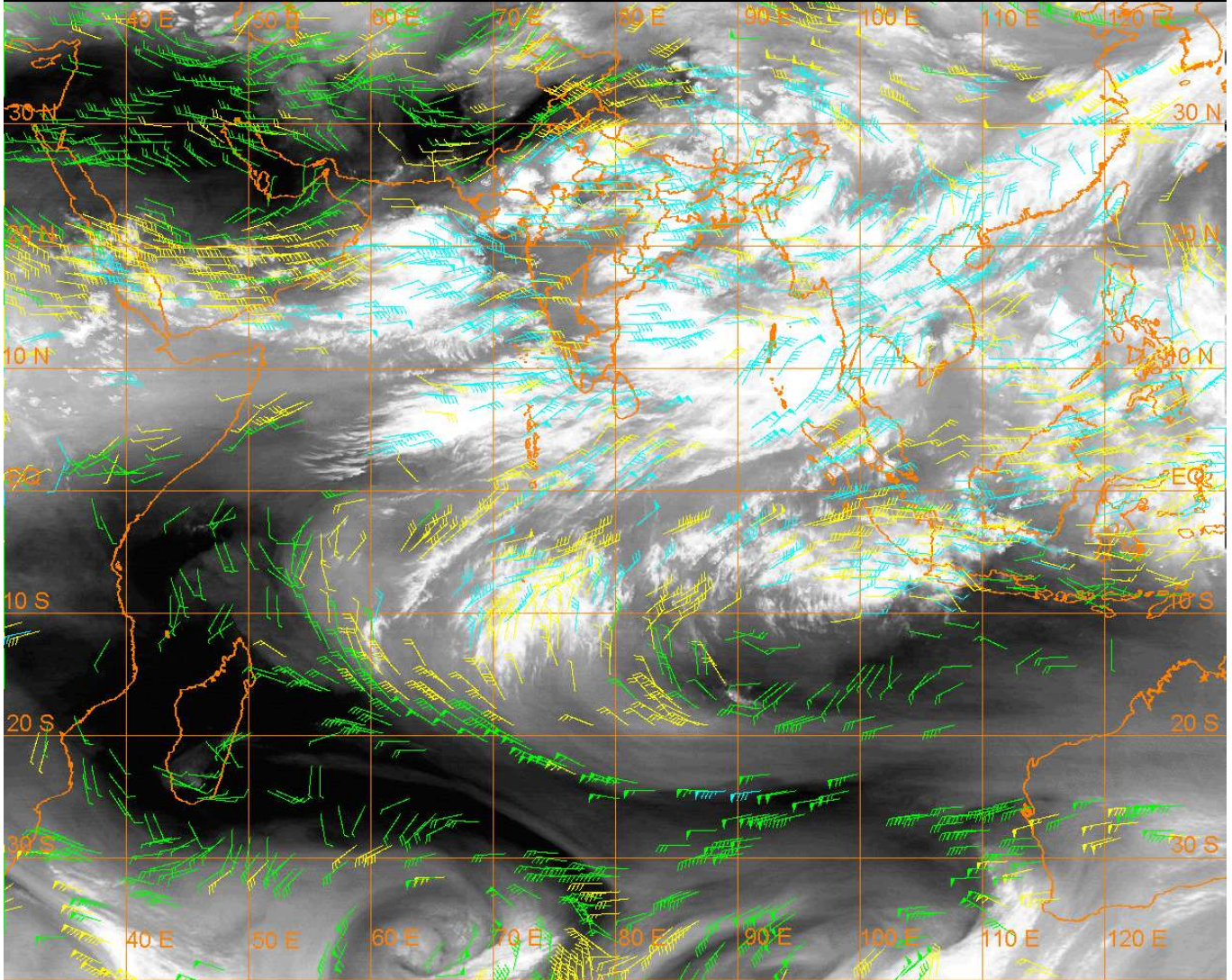
20 Kt

50 Kt

100-250 hPa

251-350 hPa

351-500 hPa



**CLOUDS DESCRIPTION WITHIN INDIA:-**

**NORTH:-**

SCT LOW/MED CLOUDS WITH EMBDD INT TO V INT CONVTN OVER E UTRKND UP (.) SCT LOW/MED CLOUDS WITH EMBDD ISOL WK TO MOD CONVTN OVER LADAKH J&K HP W UTRKND SE PJB HARY (.) ISOL LOW/MED CLOUDS OVER DLH (.)

**EAST:-**

SCT LOW/MED CLOUDS WITH EMBDD INT TO V INT CONVTN OVER BHR SE JHRKND S CHTGH ORS NAGA ASSAM MEGHA (.) SCT LOW/MED CLOUDS WITH EMBDD MOD TO INT CONVTN OVER N CHTGH SW GWB SKM & BD (.) SCT LOW/MED CLOUDS WITH EMBDD ISOL WK CONVTN OVER REST GWB SHWB ARUPR MANI MIZO TRP (.)

**WEST:-**

SCT LOW/MED CLOUDS WITH EMBDD INT TO V INT CONVTN OVER NE & S RAJ MP GUJ N MADHYA MAHA (.) SCT LOW/MED CLOUDS WITH EMBDD ISOL MOD TO INT CONVTN OVER S KKN (.) SCT LOW/MED CLOUDS WITH EMBDD WK TO MOD CONVTN OVER GOA (.) SCT LOW/MED CLOUDS OVER REST MAHA (.)

**SOUTH:-**

SCT LOW/MED CLOUDS WITH EMBDD INT TO V INT CONVTN OVER NE TLNGN N COTL AP SIK S KER LKSDP ILS AREA ANDAMAN & NICOBAR ILS AREA (.) SCT LOW/MED CLOUDS WITH EMBDD MOD TO INT CONVTN OVER COTL KRNTK S TLNGN AND ISOL WK TO MOD CONVTN OVER NIK REST COTL AP REST TLNGN RYLSM N KER TN (.)



**ARABIAN SEA:-**

SCT LOW/MED CLOUDS WITH EMBDD INT TO V INT CONVTN OVER CENTRAL ADJ NORTH ARSEA SE ARSEA ADJ SW ARSEA LKSDP ILS AREA MALDIVES & COMORIN AREA (MINIMUM **CTT MINUS 75-93 DEG CEL**) (.) SCT LOW/MED CLOUDS WITH EMBDD ISOL MOD TO INT CONVTN OVER REST ARSEA GULF OF KUTCH GULF OF CAMBAY (.)

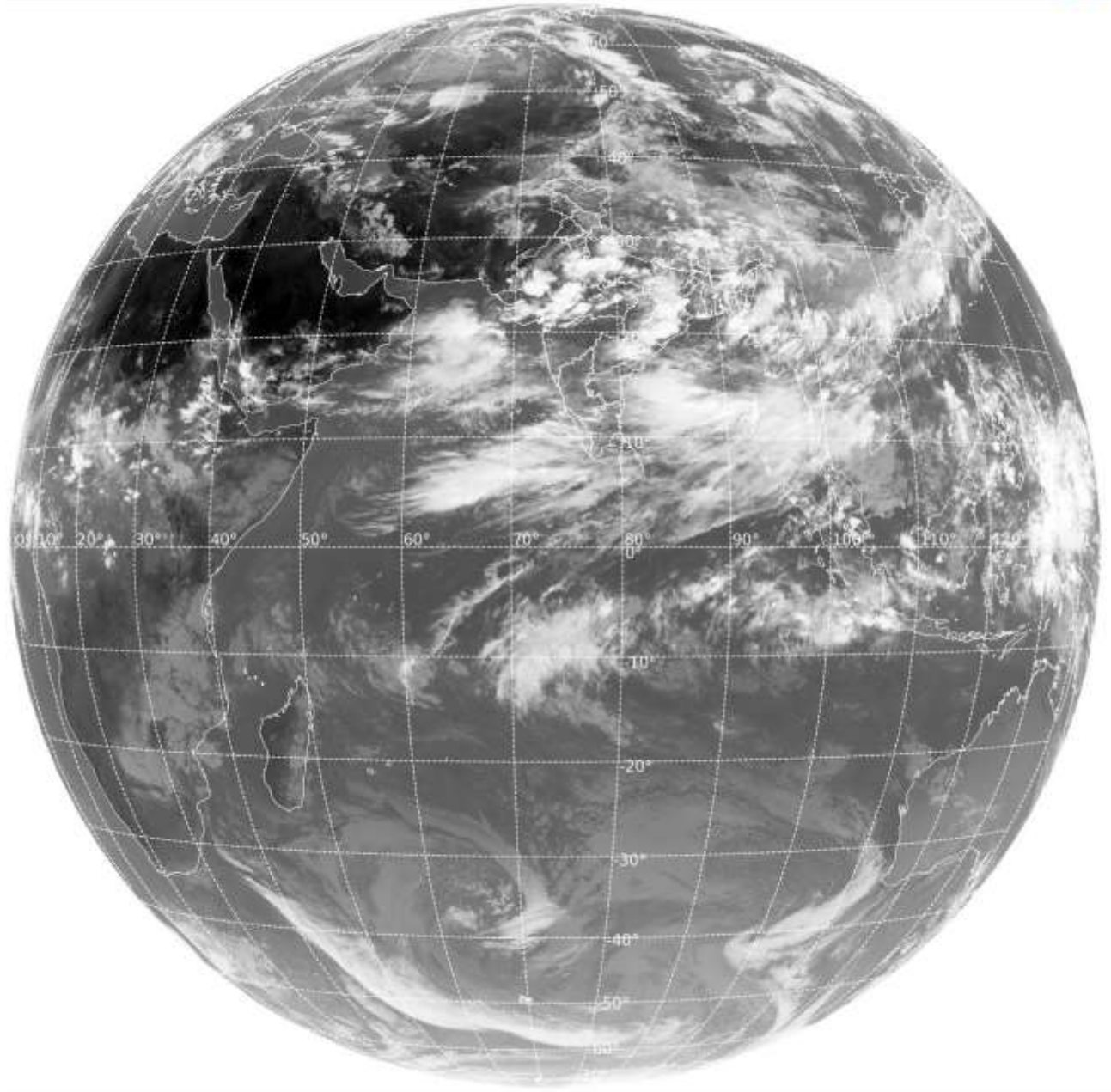
**BAY OF BENGAL & ANDAMAN SEA:-**

SCT LOW/MED CLOUDS WITH EMBDD INT TO V INT CONVTN OVER CENTRAL & SOUTH BAY NE BAY ANDAMAN SEA & TENASSERIM COAST (MINIMUM **CTT MINUS 80-93 DEG CEL**) (.)SCT LOW/MED CLOUDS WITH EMBDD MOD TO INT CONVTN OVER NW & SE BAY (.)

**CLOUDS DESCRIPTION OUTSIDE INDIA:-**

SAT : INSAT-3DR IMG  
Thermal Infrared1 Count 10.8 um  
LIB FULL DISK

25-06-2024/(1145 to 1212) GMT  
25-06-2024/(1715 to 1742) IST



244

959

IMD, DELHI

SCT LOW/MED CLOUDS WITH EMBDD MOD TO INT CONVTN OVER S SRI MALDIVES N PAK NEPAL BHUTAN TIBET CHINA YELLOW SEA EAST CHINA SEA TAIWAN MYANMAR THAILAND GULF OF THAILAND CAMBODIA LAOS VIETNAM GULF OF TONKIN HAINAN SUMATRA STR OF MALACCA MALAYSIA BORNEO SOUTH CHINA SEA JAVA ILS & SEA CELEBES ILS & SEA PHILIPPINES SULU SEA AND OVER INDIAN OCEAN BET LAT 5.0N TO 10.0S LONG 60.0E TO 100.0E AND BET LAT 10.0S TO 15.0S LONG 60.0E TO 80.0E (.)

TOO 25/1820 HRS IST=

NNNN

**LEGEND:-**

|  |                       |  |
|--|-----------------------|--|
| <b>REGION</b>  | <b>NORTH</b>          | <b>J&amp;K HP PJB HARY DLH UP UTRKND</b>                         |
|  | <b>EAST</b>           | <b>BHR JHRKND CHTGH OR WB SKM<br/>NORTH- EAST STATES</b>         |
|  | <b>WEST</b>           | <b>RAJ MP GUJ MAHA GOA</b>                                       |
|  | <b>SOUTH</b>          | <b>TLNGN AP KRNTK KER TN LKSDP<br/>ANDAMAN &amp; NICOBAR ILS</b> |
| <b>CLOUD DISTRIBUTION</b>  | <b>ISOL</b>           | <b>ISOLATED (LESS THAN 25%)</b>                                  |
|  | <b>SCT</b>            | <b>SCATTERED (25 TO 50%)</b>                                     |
|  | <b>BKN</b>            | <b>BROKEN (51 TO 75%)</b>  |
|  | <b>SLD</b>            | <b>SOLID (GREATER THAN 75%)</b>                                  |
| <b>CLOUDS TOP TEMPERATURE</b>  | <b>CTT</b>            | <b>CLOUD TOP TEMPERATURE</b>                                     |
| <b>CONVECTION</b>  | <b>WK CONVTN</b>      | <b>WEAK CONVECTION<br/>(CTT GREATER THAN -25°C)</b>              |
|  | <b>MOD CONVTN</b>     | <b>MODERATE CONVECTION<br/>(CTT BETWEEN -25°C TO -40°C)</b>      |
|  | <b>INT CONVTN</b>     | <b>INTENSE CONVECTION<br/>(CTT BETWEEN -41°C TO -70°C)</b>       |
|  | <b>V INT CONVTN</b>   | <b>VERY INTENSE CONVECTION<br/>(CTT LESS THAN -70°C)</b>         |
| <b>METEOROLOGICAL SUB- DIVISIONS, STATES &amp; UNION TERRITORIES</b> | <b>ARUPR</b>          | <b>ARUNACHAL PRADESH</b>   |
|  | <b>BHR</b>            | <b>BIHAR</b>   |
|  | <b>CHTGH</b>          | <b>CHHATTISGARH</b>  |
|  | <b>COTL AP</b>        | <b>COASTAL ANDHRA PRADESH</b>                                    |
|  | <b>COTL KRNTK</b>     | <b>COASTAL KARNATAKA</b>   |
|  | <b>COTL ORS</b>       | <b>COASTAL ORISSA</b>  |
|  | <b>GUJ</b>            | <b>GUJARAT</b>   |
|  | <b>GWB</b>            | <b>GANGETIC WEST BENGAL</b>                                      |
|  | <b>HARY</b>           | <b>HARYANA</b>   |
|  | <b>DLH</b>            | <b>DELHI</b>   |
|  | <b>HP</b>             | <b>HIMACHAL PRADESH</b>  |
|  | <b>J&amp;K</b>        | <b>JAMMU AND KASHMIR</b>   |
|  | <b>JHRKND</b>         | <b>JHARKHAND</b>   |
|  | <b>KER</b>            | <b>KERALA</b>  |
|  | <b>KKN</b>            | <b>KONKAN</b>  |
|  | <b>LKSDP</b>          | <b>LAKSHADWEEP</b>   |
|  | <b>M MAHA</b>         | <b>MADHYA MAHARASHTRA</b>  |
|  | <b>MAHA</b>           | <b>MAHARASHTRA</b>   |
|  | <b>MANI</b>           | <b>MANIPUR</b>   |
|  | <b>MEGHA</b>          | <b>MEGHALAYA</b>   |
|  | <b>MIZO</b>           | <b>MIZORAM</b>   |
| <b>MP</b>  | <b>MADHYA PRADESH</b> |  |
|  | <b>MRTHWD</b>         | <b>MARATHWADA</b>  |
|  | <b>NAGA</b>           | <b>NAGALAND</b>  |
|  | <b>N COTL AP</b>      | <b>NORTH COASTAL ANDHRA PRADESH</b>                              |

|                      |                        |                                  |
|----------------------|------------------------|----------------------------------|
|                      | <b>NIK</b>             | <b>NORTH INTERIOR KARNATAKA</b>  |
|                      | <b>ORS</b>             | <b>ORISSA</b>                    |
|                      | <b>PJB</b>             | <b>PUNJAB</b>                    |
|                      | <b>RAJ</b>             | <b>RAJASTHAN</b>                 |
|                      | <b>RYLSM</b>           | <b>RAYALASEEMA</b>               |
|                      | <b>SAU &amp; KUTCH</b> | <b>SAURASHTRA &amp; KUTCH</b>    |
|                      | <b>SHWB</b>            | <b>SUB-HIMALAYAN WEST BENGAL</b> |
|                      | <b>SIK</b>             | <b>SOUTH INTERIOR KARNATAKA</b>  |
|                      | <b>SKM</b>             | <b>SIKKIM</b>                    |
|                      | <b>TLNGN</b>           | <b>TELANGANA</b>                 |
|                      | <b>TN</b>              | <b>TAMIL NADU</b>                |
|                      | <b>TRP</b>             | <b>TRIPURA</b>                   |
|                      | <b>UP</b>              | <b>UTTAR PRADESH</b>             |
|                      | <b>UTRKND</b>          | <b>UTTARAKHAND</b>               |
|                      | <b>VID</b>             | <b>VIDHARBHA</b>                 |
|                      | <b>SHWB</b>            | <b>SUB HIMALAYAN WEST BENGAL</b> |
|                      | <b>GWB</b>             | <b>GANGETIC WEST BENGAL</b>      |
|                      | <b>ARSEA</b>           | <b>ARABIAN SEA</b>               |
|                      | <b>ILS</b>             | <b>ISLANDS</b>                   |
| <b>MISCELLANEOUS</b> | <b>ASSW</b>            | <b>IN ASSOCIATION WITH</b>       |
|                      | <b>ASSTD</b>           | <b>ASSOCIATED</b>                |
|                      | <b>LLC</b>             | <b>LOW LEVEL CIRCULATION</b>     |
|                      | <b>EMBDD</b>           | <b>EMBEDDED</b>                  |
|                      | <b>N/HOOD</b>          | <b>NEIGHBOURHOOD</b>             |
|                      | <b>EXT</b>             | <b>EXTREME</b>                   |