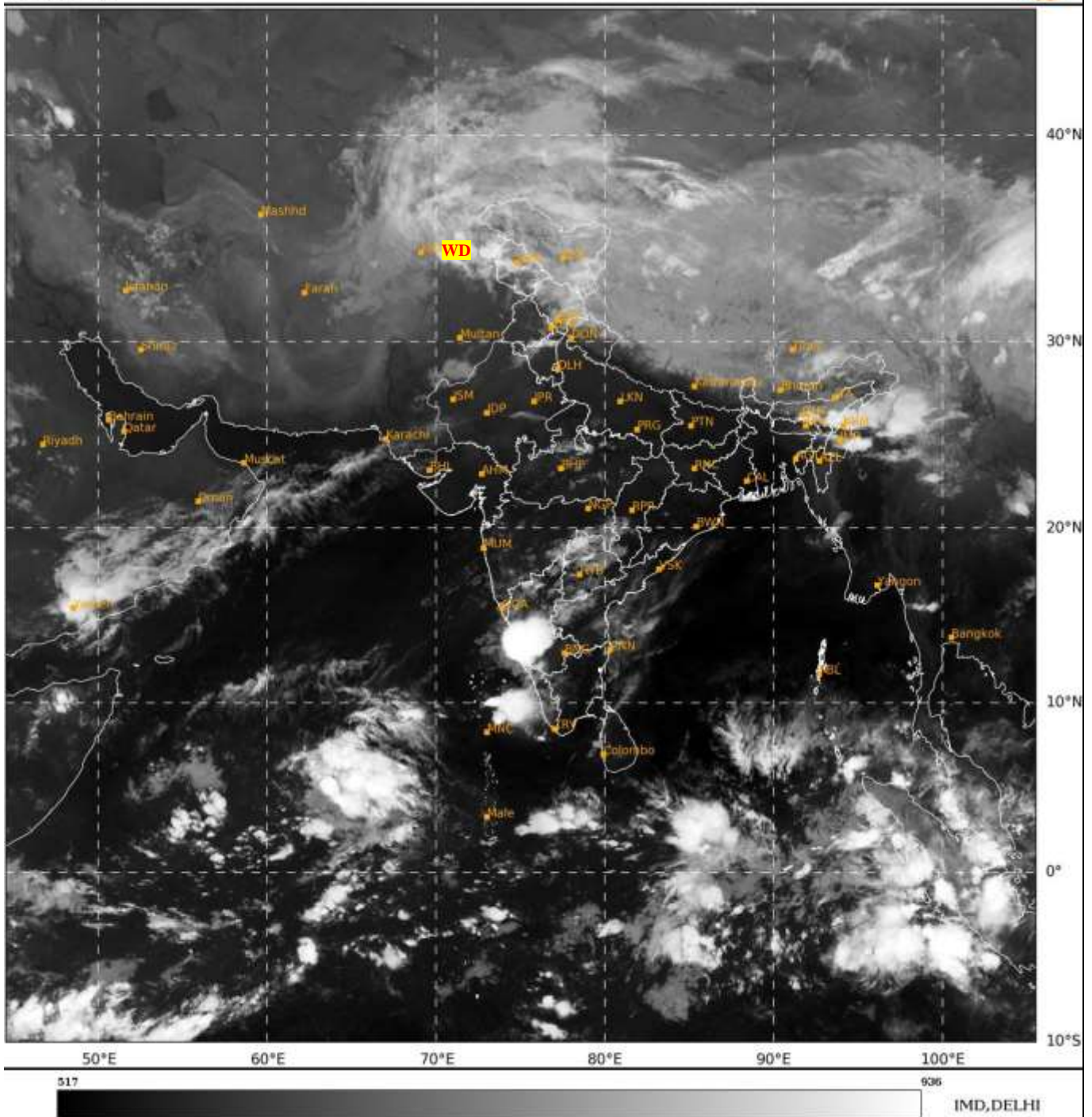




**SATELLITE BULLETIN BASED ON SATELLITE  
IMAGERIES AND PRODUCTS**  
**20.04.2024 TIME 0000 UTC**

SAT : INSAT-3D IMG  
IMG\_TIR1 10.8 um  
LIC Mercator

20-04-2024/(0000 to 0026) GMT  
20-04-2024/(0530 to 0556) IST



TCIN50 DEMS 200000

SATELLITE BULLETIN BASED ON INSAT-3D PIC OF 200000 UTC (.)

REGION COVERED BETWEEN LAT 50.0°N TO 35.0°S AND LONG 30.0°E TO 125.0°E (.)

**SALIENT FEATURES:-**

**WESTERN DISTURBANCE:-**

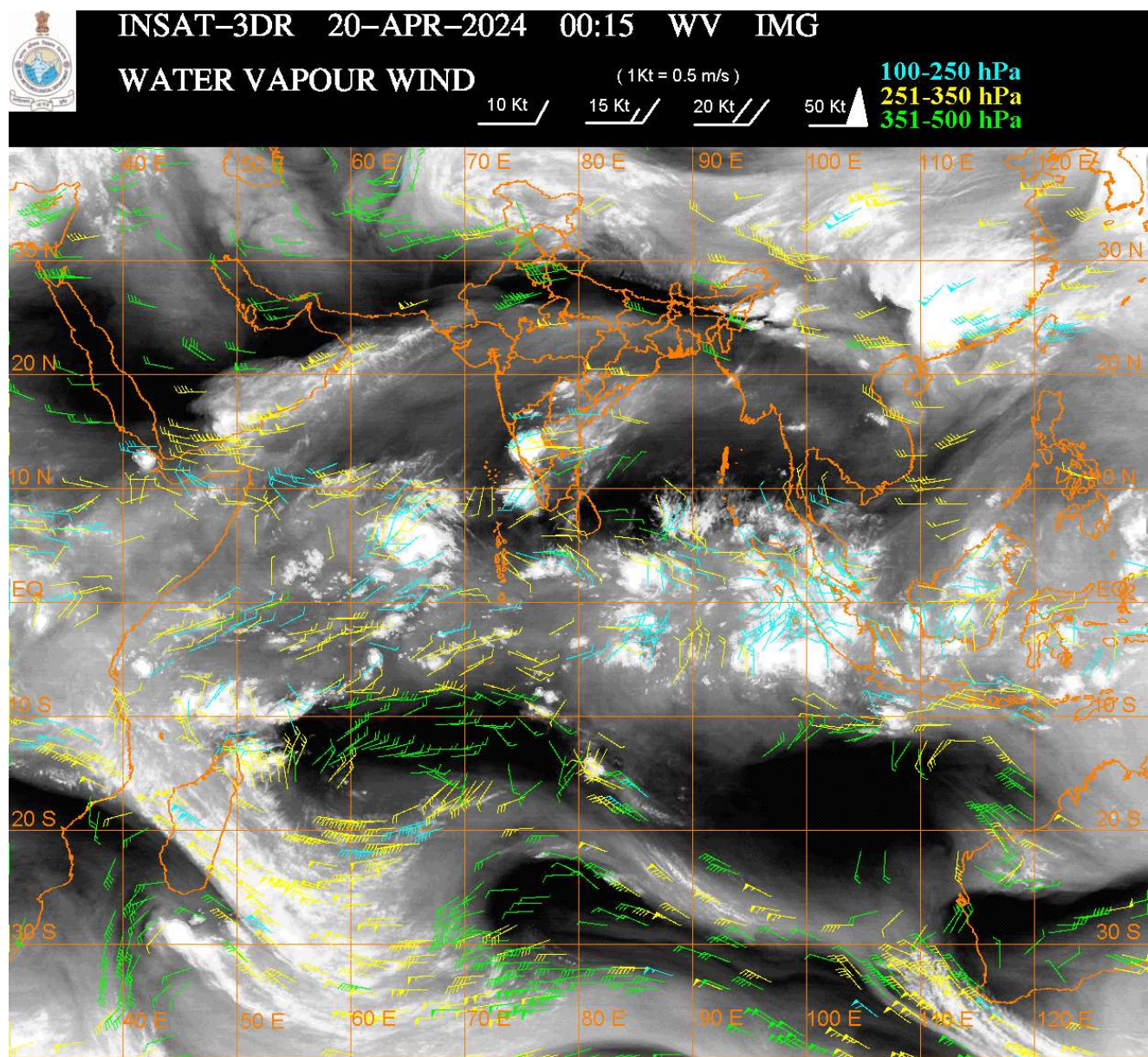
SCT TO BKN MULTILAYERED CLOUDS OVER E AFGAN N PAK LADAKH J&K HP UTRKND PJB HARY AND N/HOOD IN ASSW **WD** OVER THE AREA (.)

**THUNDERSTORM/CONVECTIVE ACTIVITIES:-**

INTENSE TO VERY INTENSE THUNDERSTORM / CONVECTIVE ACTIVITY OBSERVED OVER SIK COTL KRNTK EXT N KER LKSDP ILS AREA (MINIMUM **CTT MINUS 93 DEG CEL**) (.)



**MODERATE TO INTENSE THUNDERSTORM / CONVECTIVE ACTIVITY OBSERVED OVER LADAKH J&K ASSAM NAGA MANI NIK TLNGN (MINIMUM CTT MINUS 55-60 DEG CEL) SE PJB N HARY ARUPR (MINIMUM CTT MINUS 50 DEG CEL) (.)**



**CLOUDS DESCRIPTION WITHIN INDIA:-**

**NORTH:-**

**SCT LOW/MED CLOUDS WITH EMBDD MOD TO INT CONVTN OVER LADAKH J&K HP SE PJB N HARY (.) SCT LOW/MED CLOUDS WITH EMBDD WK TO MOD CONVTN OVER N UTRKND N PJB SW UP (.) ISOL LOW/MED CLOUDS OVER EXT NW UP (.)**

**EAST:-**

**SCT TO BKN LOW/MED CLOUDS WITH EMBDD MOD TO INT CONVTN OVER E MEGHA ASSAM ARUPR NAGA MANI (.) SCT LOW/MED CLOUDS WITH EMBDD ISOL WK TO MOD CONVTN OVER S CHTGH S ORS SKM (.) ISOL TO SCT LOW/MED CLOUDS OVER N CHTGH N ORS N SHWB W MEGHA MIZO TRP (.)**

**WEST:-**

**SCT LOW/MED CLOUDS WITH EMBDD ISOL WK TO MOD CONVTN OVER RAJ MP EXT SE GUJ MAHA GOA (.) SCT LOW/MED CLOUDS OVER NW GUJ (.)**

**SOUTH:-**

**SCT TO BKN LOW/MED CLOUDS WITH EMBDD INT TO V INT CONVTN OVER SIK ADJ COTL KRNTK EXT N KER LKSDP ILS AREA (MINIMUM CTT MINUS 93 DEG CEL) (.) SCT LOW/MED CLOUDS WITH EMBDD MOD TO INT CONVTN OVER NIK TLNGN AND WK TO MOD CONVTN OVER N RYLSM S COTL AP REST KER N TN NICOBAR ILS (.) SCT LOW/MED CLOUDS OVER N COTL AP S RYLSM S TN ANDAMAN ILS (.)**

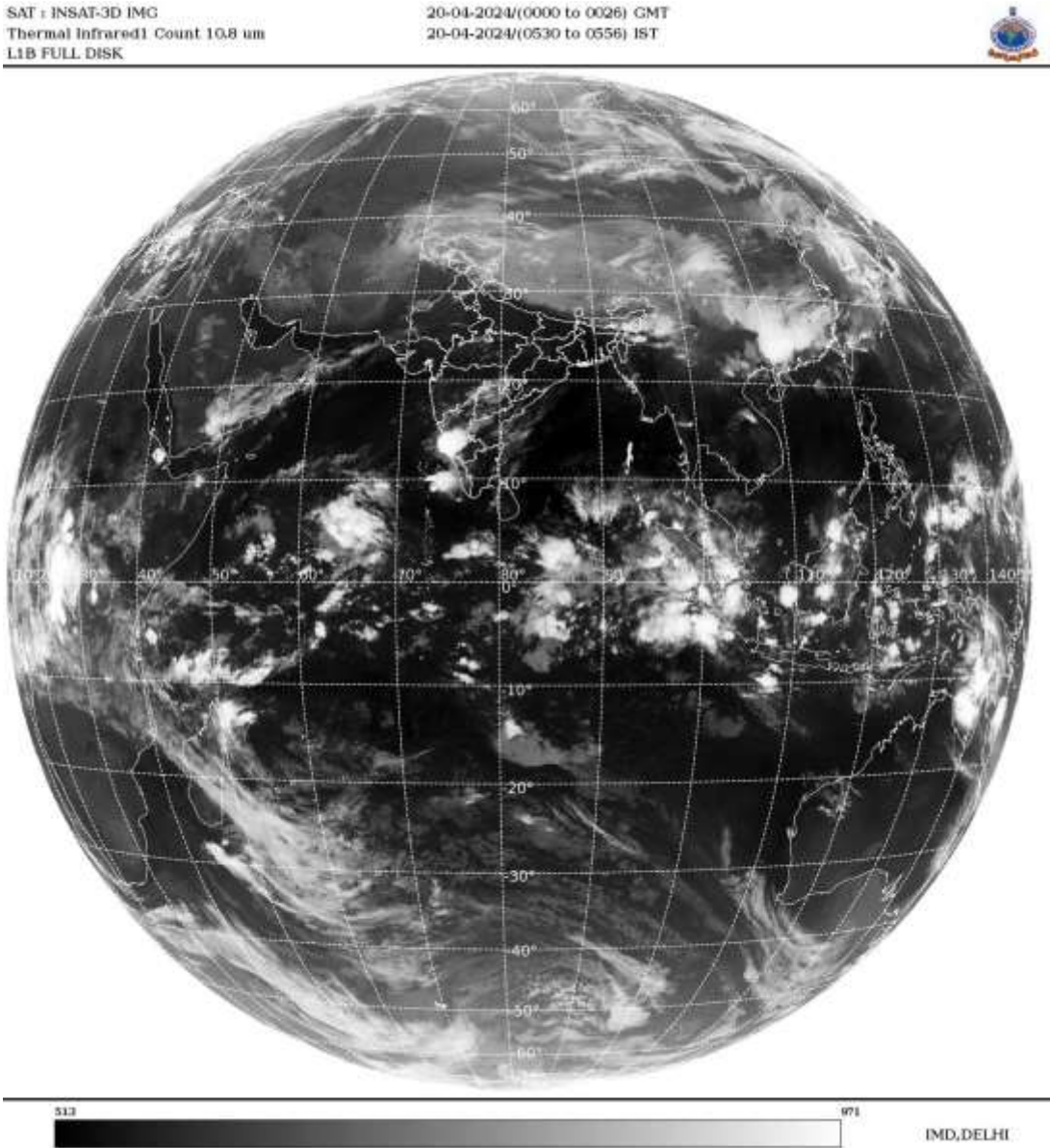
ARABIAN SEA:-

SCT TO BKN LOW/MED CLOUDS WITH EMBDD INT TO V INT CONVTN OVER EC ARSEA ADJ KRNTK COAST SE ARSEA OFF KER COAST & LKSDP ILS AREA AND ALSO OVER SOUTH CENTRAL ARSEA SOUTH OF LAT 10.0N (.) SCT LOW/MED CLOUDS WITH EMBDD MOD TO INT CONVTN OVER NORTH & WC ARSEA AND REST SOUTH ARSEA (.)

BAY OF BENGAL & ANDAMAN SEA:-

SCT LOW/MED CLOUDS WITH EMBDD INT TO V INT CONVTN OVER S ANDAMAN SEA AND MOD TO INT CONVTN OVER SE BAY (.) SCT LOW/MED CLOUDS WITH EMBDD ISOL WK TO MOD CONVTN OVER NORTH BAY WC & SW BAY AND N ANDAMAN SEA (.)

CLOUDS DESCRIPTION OUTSIDE INDIA:-



SCT LOW/MED CLOUDS WITH EMBDD MOD TO INT CONVTN OVER GULF OF MANNAR PAK TIBET CHINA YELLOW SEA EAST CHINA SEA TAIWAN N MYANMAR W THAILAND S LAOS N VIETNAM GULF OF TONKIN GULF OF THAILAND SUMATRA STR OF MALACCA MALAYSIA BORNEO SOUTH CHINA SEA JAVA ILS & SEA CELEBES ILS & SEA MADAGASCAR MOZAMBIQUE CHANNEL AND OVER INDIAN OCEAN BET LAT 5.0N TO 20.0S LONG 40.0E TO 110.0E AND BET LAT 20.0S TO 35.0S LONG 40.0E TO 70.0E (.)

TOO 20/0715 HRS IST=

NNNN



LEGEND:-

|   |              |  |
|---|--------------|--|
| REGION  | NORTH        | J&K HP PJB HARY DLH UP UTRKND                        |
|   | EAST         | BHR JHRKND CHTGH ORS WB<br>SKM NORTH- EAST STATES    |
|   | WEST         | RAJ MP GUJ MAHA GOA                                  |
|   | SOUTH        | TLNGN AP KRNTK KER TN LKSDP<br>ANDAMAN & NICOBAR ILS |
| CLOUD DISTRIBUTION  | ISOL         | ISOLATED (LESS THAN 25%)                             |
|   | SCT          | SCATTERED (25 TO 50%)                                |
|   | BKN          | BROKEN (51 TO 75%)                                   |
|   | SLD          | SOLID (GREATER THAN 75%)                             |
| CLOUDS TOP TEMPERATURE  | CTT          | CLOUD TOP TEMPERATURE                                |
| CONVECTION  | WK CONVTN    | WEAK CONVECTION<br>(CTT GREATER THAN -25°C)          |
|   | MOD CONVTN   | MODERATE CONVECTION<br>(CTT BETWEEN -25°C TO -40°C)  |
|   | INT CONVTN   | INTENSE CONVECTION<br>(CTT BETWEEN -41°C TO -70°C)   |
|   | V INT CONVTN | VERY INTENSE CONVECTION<br>(CTT LESS THAN -70°C)     |
| METEOROLOGICAL<br>SUB- DIVISIONS,<br>STATES & UNION<br>TERITORIES | ARUPR        | ARUNACHAL PRADESH                                    |
|   | BHR          | BIHAR  |
|   | CHTGH        | CHHATTISGARH   |
|   | COTL AP      | COASTAL ANDHRA PRADESH                               |
|   | COTL KRNTK   | COASTAL KARNATAKA                                    |
|   | COTL ORS     | COASTAL ORISSA                                       |
|   | GUJ          | GUJARAT  |
|   | GWB          | GANGETIC WEST BENGAL                                 |
|   | HARY         | HARYANA  |
|   | DLH          | DELHI  |
|   | HP           | HIMACHAL PRADESH                                     |
|   | J&K          | JAMMU AND KASHMIR                                    |
|   | JHRKND       | JHARKHAND  |
|   | KER          | KERALA   |
|   | KKN          | KONKAN   |
|   | LKSDP        | LAKSHADWEEP  |
|   | M MAHA       | MADHYA MAHARASHTRA                                   |
|   | MAHA         | MAHARASHTRA  |
|   | MANI         | MANIPUR  |
|   | MEGHA        | MEGHALAYA  |
|   | MIZO         | MIZORAM  |
|   | MP           | MADHYA PRADESH                                       |
|   | MRTHWD       | MARATHWADA   |
|   | NAGA         | NAGALAND   |
|   | N COTL AP    | NORTH COASTAL ANDHRA<br>PRADESH                      |
|   | NIK          | NORTH INTERIOR KARNATAKA                             |

|                      |                        |                                  |
|----------------------|------------------------|----------------------------------|
|                      | <b>ORS</b>             | <b>ORISSA</b>                    |
|                      | <b>PJB</b>             | <b>PUNJAB</b>                    |
|                      | <b>RAJ</b>             | <b>RAJASTHAN</b>                 |
|                      | <b>RYLSM</b>           | <b>RAYALASEEMA</b>               |
|                      | <b>SAU &amp; KUTCH</b> | <b>SAURASHTRA &amp; KUTCH</b>    |
|                      | <b>SHWB</b>            | <b>SUB-HIMALAYAN WEST BENGAL</b> |
|                      | <b>SIK</b>             | <b>SOUTH INTERIOR KARNATAKA</b>  |
|                      | <b>SKM</b>             | <b>SIKKIM</b>                    |
|                      | <b>TLNGN</b>           | <b>TELANGANA</b>                 |
|                      | <b>TN</b>              | <b>TAMIL NADU</b>                |
|                      | <b>TRP</b>             | <b>TRIPURA</b>                   |
|                      | <b>UP</b>              | <b>UTTAR PRADESH</b>             |
|                      | <b>UTRKND</b>          | <b>UTTARAKHAND</b>               |
|                      | <b>VID</b>             | <b>VIDHARBHA</b>                 |
|                      | <b>SHWB</b>            | <b>SUB HIMALAYAN WEST BENGAL</b> |
|                      | <b>GWB</b>             | <b>GANGETIC WEST BENGAL</b>      |
|                      | <b>ARSEA</b>           | <b>ARABIAN SEA</b>               |
|                      | <b>ILS</b>             | <b>ISLANDS</b>                   |
| <b>MISCELLANEOUS</b> | <b>ASSW</b>            | <b>IN ASSOCIATION WITH</b>       |
|                      | <b>ASSTD</b>           | <b>ASSOCIATED</b>                |
|                      | <b>LLC</b>             | <b>LOW LEVEL CIRCULATION</b>     |
|                      | <b>EMBDD</b>           | <b>EMBEDDED</b>                  |
|                      | <b>N/HOOD</b>          | <b>NEIGHBOURHOOD</b>             |
|                      | <b>EXT</b>             | <b>EXTREME</b>                   |