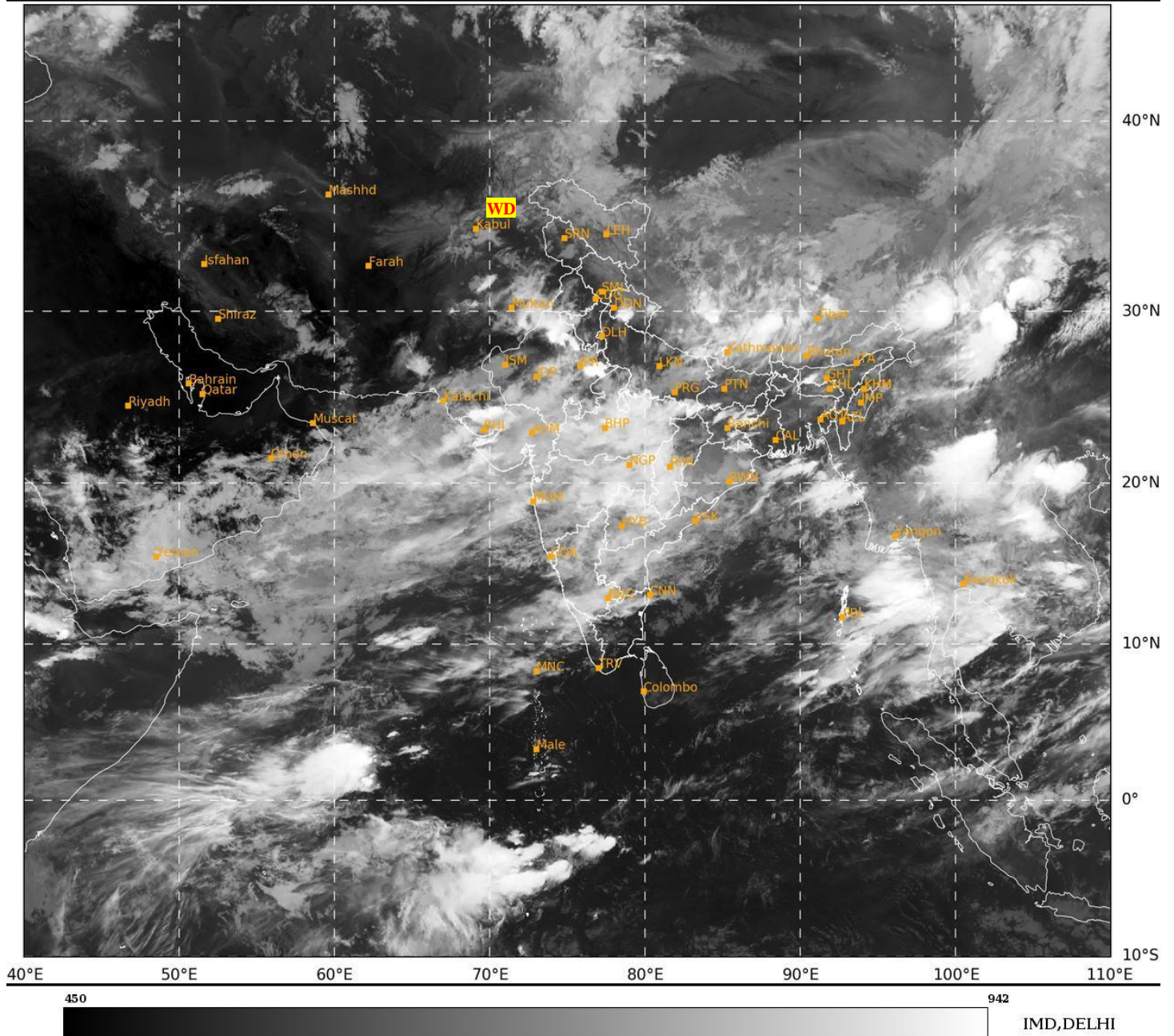




**SATELLITE BULLETIN BASED ON SATELLITE  
IMAGERIES AND PRODUCTS**  
**23.07.2024 TIME 1800 UTC**

SAT : INSAT-3DR IMG  
IMG\_TIR1 10.8 um  
LIC Mercator

23-07-2024/(1715 to 1742) GMT  
23-07-2024/(2245 to 2312) IST



TCIN50 DEMS 231800

SATELLITE BULLETIN BASED ON INSAT-3DR PIC OF 231715 UTC (.)

REGION COVERED BETWEEN LAT 50.0°N TO 35.0°S AND LONG 40.0°E TO 125.0°E (.)

**SALIENT FEATURES:-**

**WESTERN DISTURBANCE (WD):-**

SCT MULTILAYERED CLOUDS OVER N PAK LADAKH J&K HP UTRKND PJB HARY DLH N RAJ & N/HOOD IN ASSW **WD** OVER THE AREA (.)

**CONVECTIVE / THUNDERSTORM ACTIVITY:-**

INTENSE TO VERY INTENSE CONVECTIVE / THUNDERSTORM ACTIVITY OBSERVED OVER UTRKND N RAJ MP S UP JHRKND W GUJ (MINIMUM **CTT MINUS 80-90 DEG CEL**) (.)

MODERATE TO INTENSE CONVECTIVE / THUNDERSTORM ACTIVITY OBSERVED OVER E GUJ MAHA TLNGN CHTGH W ASSAM (MINIMUM **CTT MINUS 50-70 DEG CEL**) (.)





INSAT-3DR 23-JUL-2024 17:15 WV IMG

WATER VAPOUR WIND

(1Kt = 0.5 m/s)

10 Kt

15 Kt

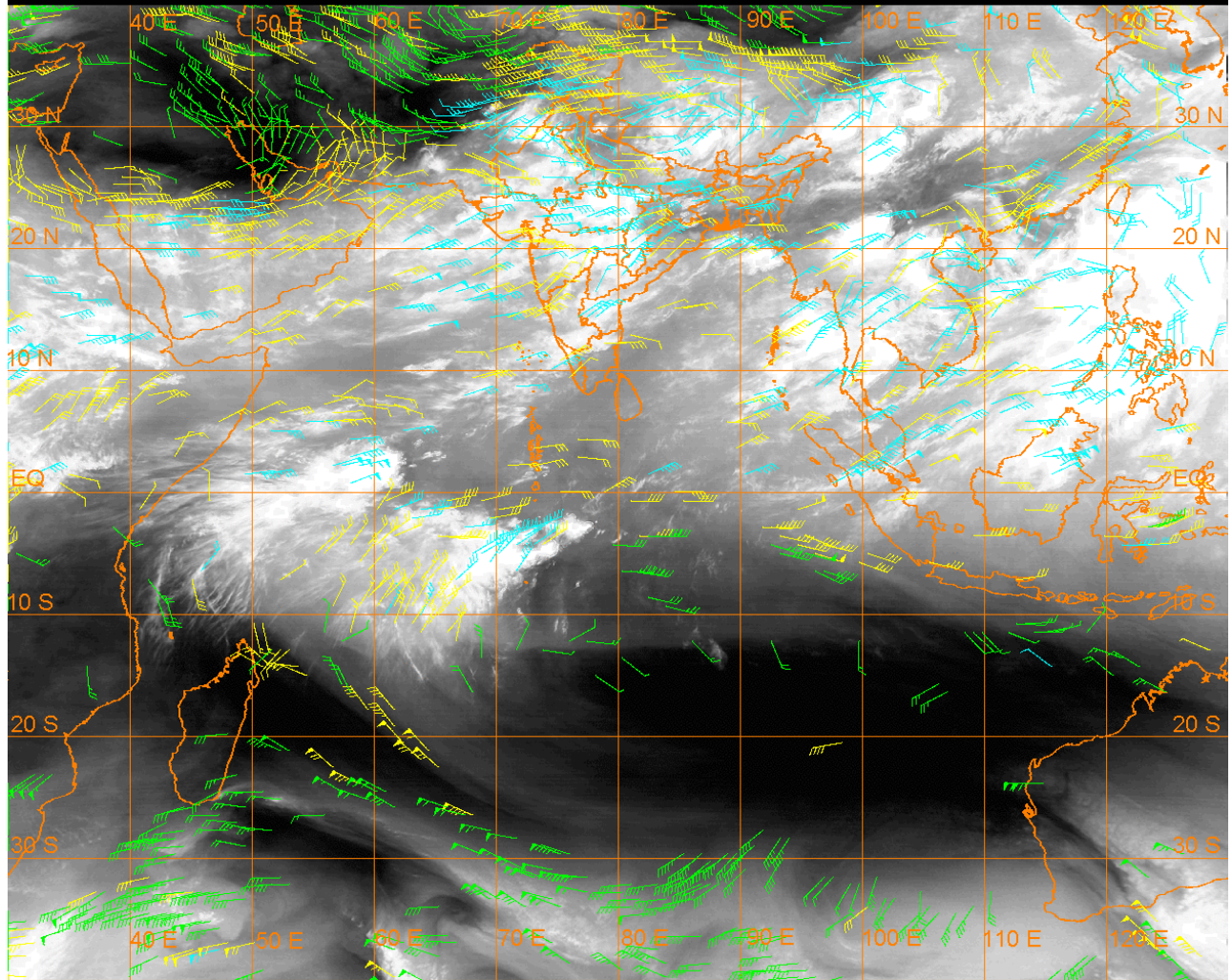
20 Kt

50 Kt

100-250 hPa

251-350 hPa

351-500 hPa



#### **CLOUDS DESCRIPTION WITHIN INDIA:-**

##### **NORTH:-**

SCT LOW/MED CLOUDS WITH EMBDD INT TO V INT CONVTN OVER UTRKND S UP (.) SCT LOW/MED CLOUDS WITH EMBDD MOD TO INT CONVTN OVER SW PJB W HARY NE UP AND ISOL WK TO MOD CONVTN OVER LADAKH J&K HP REST PJB REST HARY REST UP (.) SCT LOW/MED CLOUDS OVER DLH (.)

##### **EAST:-**

SCT LOW/MED CLOUDS WITH EMBDD INT TO V INT CONVTN OVER N JHRKND W ASSAM (.) SCT LOW/MED CLOUDS WITH EMBDD MOD TO INT CONVTN OVER W BHR S JHRKND CHTGH ORS W GWB SKM ARUPR AND ISOL WK TO MOD CONVTN OVER E BHR REST GWB SHWB REST NE STATES (.)

##### **WEST:-**

SCT LOW/MED CLOUDS WITH EMBDD INT TO V INT CONVTN OVER N RAJ MP W GUJ (.) SCT LOW/MED CLOUDS WITH EMBDD MOD TO INT CONVTN OVER S RAJ E GUJ MAHA & GOA (.)

##### **SOUTH:-**

SCT LOW/MED CLOUDS WITH EMBDD MOD TO INT CONVTN OVER KRNTK TLNGN RYLSM COTL AP N KER N TN LKSDP ILS ANDAMAN & NICOBAR ILS (.) SCT LOW/MED CLOUDS OVER S KER S TN (.)

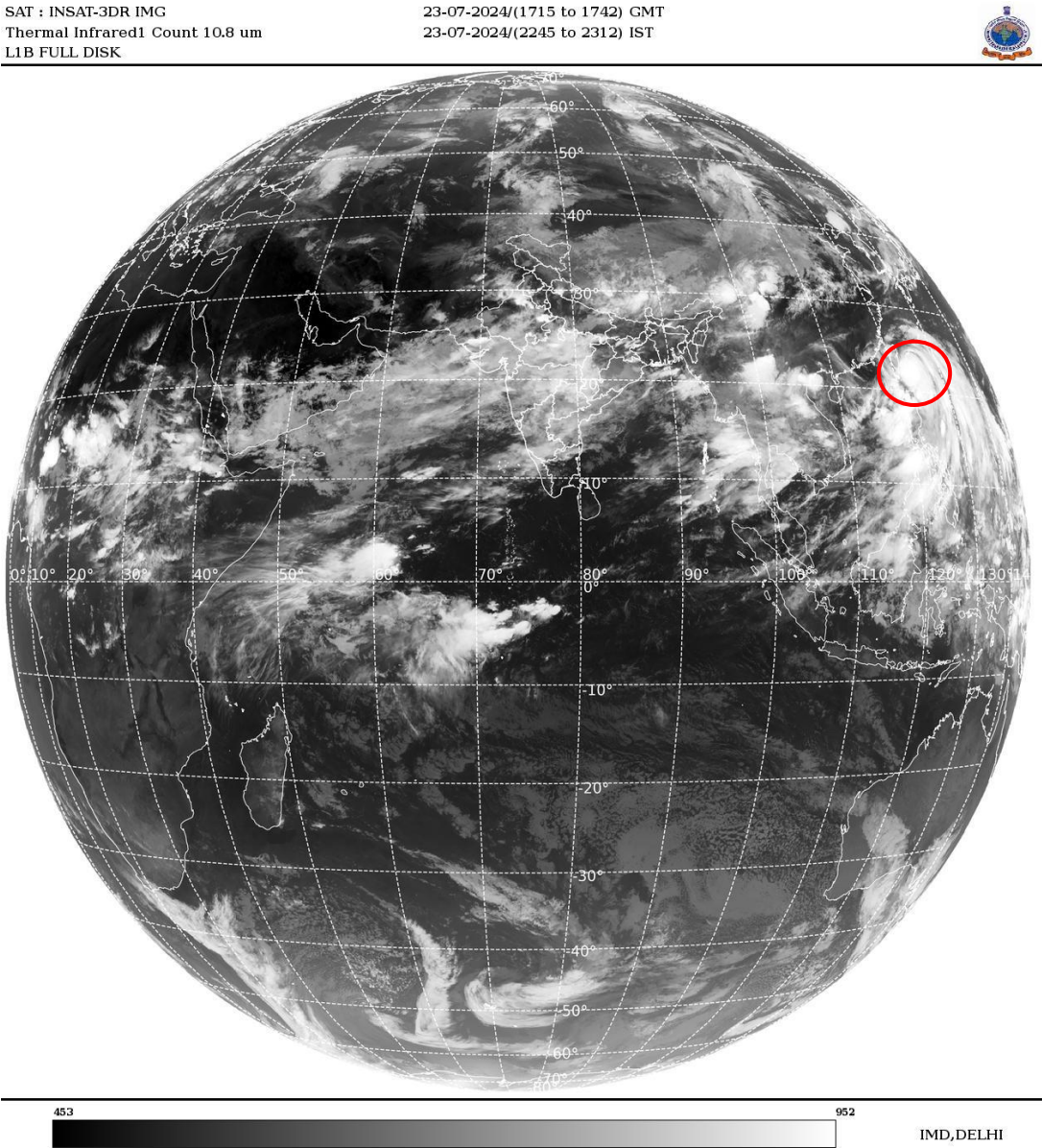
##### **ARABIAN SEA:-**

SCT LOW/MED CLOUDS WITH EMBDD MOD TO INT CONVTN OVER ARSEA & LKSDP ILS AREA (.)

##### **BAY OF BENGAL & ANDAMAN SEA:-**

SCT LOW/MED CLOUDS WITH EMBDD INT TO V INT CONVTN OVER N BAY ANDAMAN SEA (.) SCT LOW/MED CLOUDS WITH EMBDD MOD TO INT CONVTN OVER CENTRAL & SE BAY (.)

CLOUDS DESCRIPTION OUTSIDE INDIA:-



VORTEX (GAEMI) OVER EAST CHINA SEA (EAST OF TAIWAN):-

VORTEX (**GAEMI**) OVER EAST CHINA SEA CENTERED NEAR **22.8N / 123.8E** (.) INTENSITY **T5.5/5.5** (.) ASSOCIATED CORRESPONDING MAXIMUM SUSTAINED WINDS OF **90-119 KTS** (.) ASSTD BKN LOW/MED CLOUDS WITH EMBDD INT TO V INT CONVTN OVER AREA BET LAT 17.0N TO 27.0N LONG 120.0E TO 130.0E TAIWAN & PHILIPPINES (.) MINIMUM **CTT MINUS 93 DEG** CEL (.)

SCT LOW/MED CLOUDS WITH EMBDD MOD TO INT CONVTN OVER MALDIVES PAK NEPAL BHUTAN TIBET CHINA EAST CHINA SEA TAIWAN MYANMAR THAILAND GULF OF THAILAND CAMBODIA LAOS VIETNAM GULF OF TONKIN HAINAN TAIWAN SUMATRA STR OF MALACCA MALAYSIA BORNEO SOUTH CHINA SEA CELEBES ILS & SEA PHILIPPINES SULU SEA AND OVER INDIAN OCEAN BET LAT 5.0N TO 10.0S LONG 40.0E TO 80.0E (.)

TOO 23/2340 HRS IST=

NNNN

LEGEND:-

REGION	NORTH	J&K HP PJB HARY DLH UP UTRKND
	EAST	BHR JHRKND CHTGH OR WB SKM NORTH- EAST STATES
	WEST	RAJ MP GUJ MAHA GOA
	SOUTH	TLNGN AP KRNTK KER TN LKSDP ANDAMAN & NICOBAR ILS

<b>CLOUD DISTRIBUTION</b>	<b>ISOL</b>	<b>ISOLATED (LESS THAN 25%)</b>
	<b>SCT</b>	<b>SCATTERED (25 TO 50%)</b>
	<b>BKN</b>	<b>BROKEN (51 TO 75%)</b>
	<b>SLD</b>	<b>SOLID (GREATER THAN 75%)</b>
<b>CLOUDS TOP TEMPERATURE</b>	<b>CTT</b>	<b>CLOUD TOP TEMPERATURE</b>
<b>CONVECTION</b>	<b>WK CONVTN</b>	<b>WEAK CONVECTION (CTT GREATER THAN -25°C)</b>
	<b>MOD CONVTN</b>	<b>MODERATE CONVECTION (CTT BETWEEN -25°C TO -40°C)</b>
	<b>INT CONVTN</b>	<b>INTENSE CONVECTION (CTT BETWEEN -41°C TO -70°C)</b>
	<b>V INT CONVTN</b>	<b>VERY INTENSE CONVECTION (CTT LESS THAN -70°C)</b>
<b>METEOROLOGICAL SUB- DIVISIONS, STATES &amp; UNION TERITORIES</b>	<b>ARUPR</b>	<b>ARUNACHAL PRADESH</b>
	<b>BHR</b>	<b>BIHAR</b>
	<b>CHTGH</b>	<b>CHHATTISGARH</b>
	<b>COTL AP</b>	<b>COASTAL ANDHRA PRADESH</b>
	<b>COTL KRNTK</b>	<b>COASTAL KARNATAKA</b>
	<b>COTL ORS</b>	<b>COASTAL ORISSA</b>
	<b>GUJ</b>	<b>GUJARAT</b>
	<b>GWB</b>	<b>GANGETIC WEST BENGAL</b>
	<b>HARY</b>	<b>HARYANA</b>
	<b>DLH</b>	<b>DELHI</b>
	<b>HP</b>	<b>HIMACHAL PRADESH</b>
	<b>J&amp;K</b>	<b>JAMMU AND KASHMIR</b>
	<b>JHRKND</b>	<b>JHARKHAND</b>
	<b>KER</b>	<b>KERALA</b>
	<b>KKN</b>	<b>KONKAN</b>
	<b>LKSDP</b>	<b>LAKSHADWEEP</b>
	<b>M MAHA</b>	<b>MADHYA MAHARASHTRA</b>
	<b>MAHA</b>	<b>MAHARASHTRA</b>
	<b>MANI</b>	<b>MANIPUR</b>
	<b>MEGHA</b>	<b>MEGHALAYA</b>
	<b>MIZO</b>	<b>MIZORAM</b>
	<b>MP</b>	<b>MADHYA PRADESH</b>
	<b>MRTHWD</b>	<b>MARATHWADA</b>
	<b>NAGA</b>	<b>NAGALAND</b>
	<b>N COTL AP</b>	<b>NORTH COASTAL ANDHRA PRADESH</b>
	<b>NIK</b>	<b>NORTH INTERIOR KARNATAKA</b>
	<b>ORS</b>	<b>ORISSA</b>
	<b>PJB</b>	<b>PUNJAB</b>
	<b>RAJ</b>	<b>RAJASTHAN</b>
	<b>RYLSM</b>	<b>RAYALASEEMA</b>
	<b>SAU &amp; KUTCH</b>	<b>SAURASHTRA &amp; KUTCH</b>
	<b>SHWB</b>	<b>SUB-HIMALAYAN WEST BENGAL</b>
	<b>SIK</b>	<b>SOUTH INTERIOR KARNATAKA</b>
	<b>SKM</b>	<b>SIKKIM</b>

	<b>TLNGN</b>	<b>TELANGANA</b>
	<b>TN</b>	<b>TAMIL NADU</b>
	<b>TRP</b>	<b>TRIPURA</b>
	<b>UP</b>	<b>UTTAR PRADESH</b>
	<b>UTRKND</b>	<b>UTTARAKHAND</b>
	<b>VID</b>	<b>VIDHARBHA</b>
	<b>SHWB</b>	<b>SUB HIMALAYAN WEST BENGAL</b>
	<b>GWB</b>	<b>GANGETIC WEST BENGAL</b>
	<b>ARSEA</b>	<b>ARABIAN SEA</b>
	<b>ILS</b>	<b>ISLANDS</b>
<b>MISCELLANEOUS</b>	<b>ASSW</b>	<b>IN ASSOCIATION WITH</b>
	<b>ASSTD</b>	<b>ASSOCIATED</b>
	<b>LLC</b>	<b>LOW LEVEL CIRCULATION</b>
	<b>EMBDD</b>	<b>EMBEDDED</b>
	<b>N/HOOD</b>	<b>NEIGHBOURHOOD</b>
	<b>EXT</b>	<b>EXTREME</b>