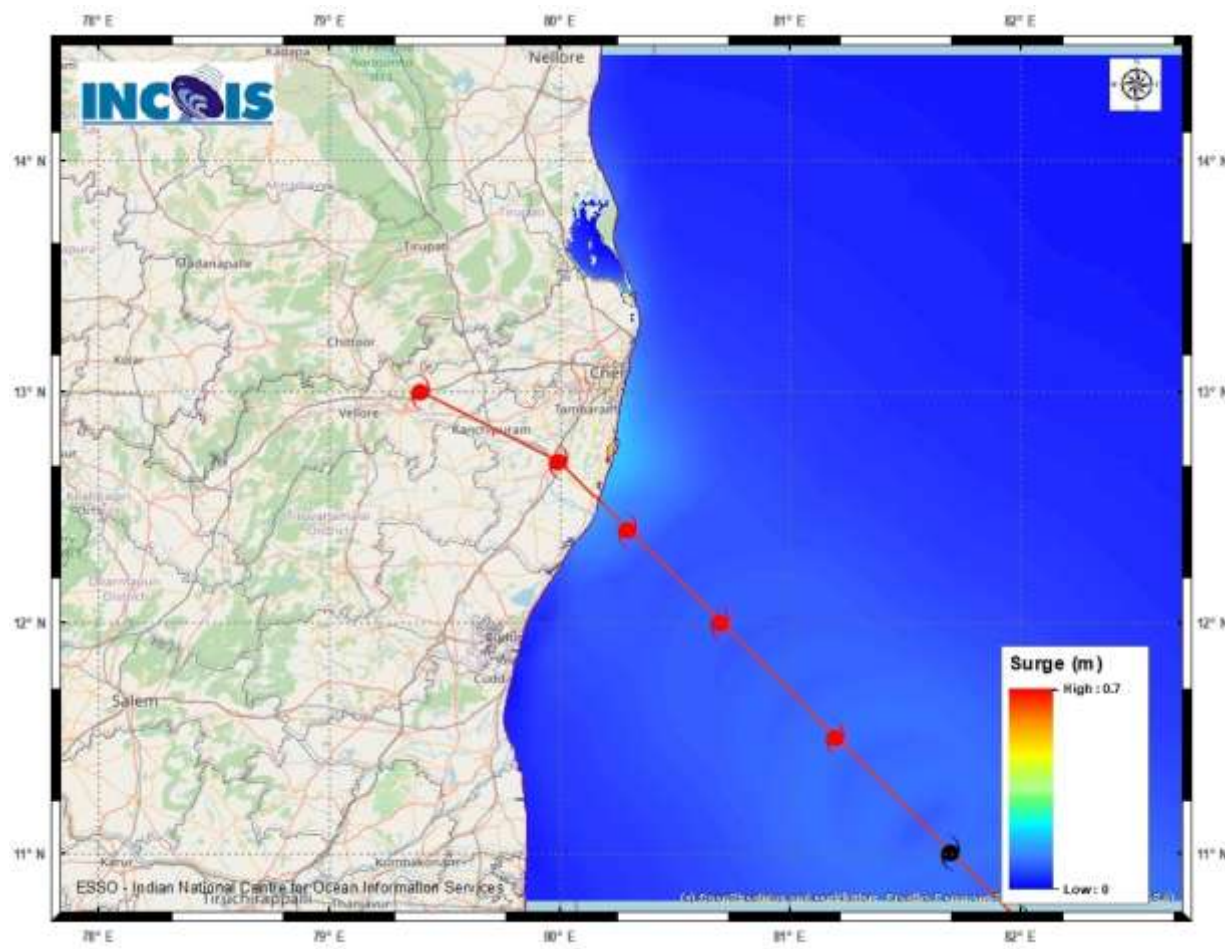


STORM SURGE GUIDANCE BASED ON 0600 UTC OF 9th DECEMBER, 2022
 The storm surge of about 0.5 m height above the astronomical tide likely to inundate low lying areas of north coastal Tamilnadu and Puducherry during the time of landfall.



STORM SURGE HEIGHT INFORMATION:

* The below listed surge heights are over and above astronomical tide.

MANDAL/TALUK	DISTRICT	STATE / UNION TERRITORY	NEAREST PLACE OF HABITATION	STORM SURGE (m) *	EXPECTED INUNDATION EXTENT (km)
Chengalpattu	Kancheepuram	Tamil Nadu	Muthukadu	0.3-0.7	Upto 0.13