



**India Meteorological Department
Earth System Science Organisation
(Ministry of Earth Sciences)**

Bulletin No.: 01 (BOB 01/2017)

Time of issue: 0830 hours IST

Dated: 15.04.2017

FROM: INDIA METEOROLOGICAL DEPARTMENT

**To: CONTROL ROOM, NDM, MINISTRY OF HOME AFFAIRS
CONTROL ROOM NDMA
CABINET SECRETARIAT
PS TO HON'BLE MINISTER FOR S & T AND EARTH SCIENCES
SECRETARY, MoES
SECRETARY, DST
H.Q. (INTEGRATED DEFENCE STAFF AND CDS)
DIRECTOR GENERAL, DOORDARSHAN
DIRECTOR GENERAL, AIR
PIB MoES
UNI
D.G. NATIONAL DISASTER RESPONSE FORCE (NDRF)
CHIEF SECRETARY, ANDAMAN & NICOBAR ISLANDS**

Sub: Depression over southeast Bay of Bengal

Latest observations and satellite imageries indicate that a depression has formed over southeast Bay of Bengal and lay centred at 0530 hrs IST of today, the 15th April, 2017 near Latitude 12.0° N and Longitude 88.0 °E, about 540 km west-southwest of Maya Bandar (Andaman & Nicobar Islands) and 1010 km south-southwest of Kyaukpyu (Myanmar). The system is most likely to intensify further into a deep depression during next 24 hours. It is most likely to move north-northeastwards towards Myanmar coast during next 72 hours.

Warning:

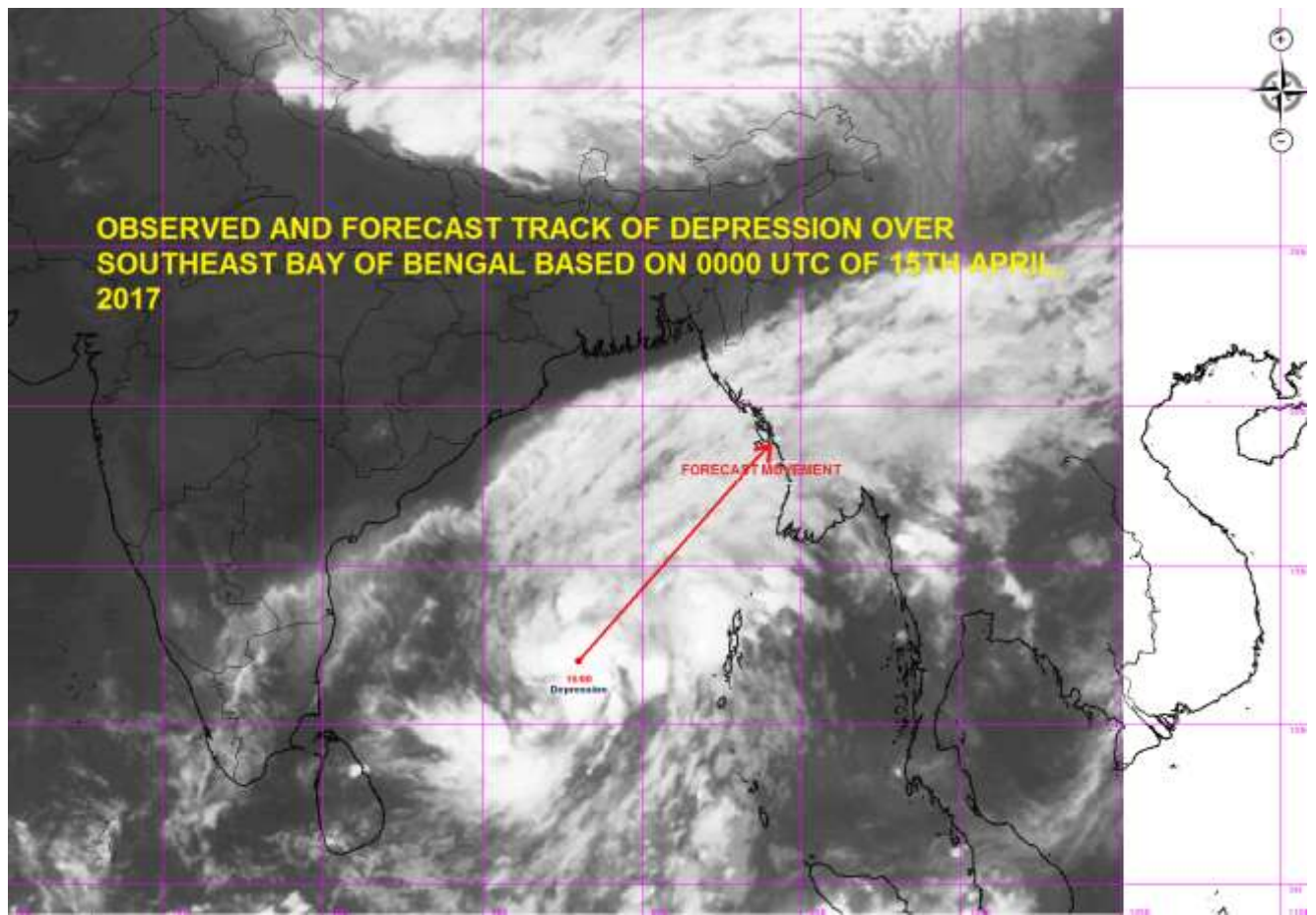
- (i) Heavy Rainfall Warning:** Rainfall at most places with heavy rainfall at isolated places would occur over Andaman Islands during next 48 hrs.
- (ii) Wind warning:** Squally winds speed reaching 40-50 kmph gusting to 60 kmph would prevail over Andaman Islands and adjoining Sea areas during next 48 hours.
- (iii) Sea condition:** Sea condition would be rough to very rough along and off Andaman Islands during next 48 hours.
- (iv) Fishermen Warning:** Fishermen are advised not to venture into sea along & off Andaman Islands during next 48 hrs. Fishermen out at sea are advised to return to the coast

The next bulletin will be issued at 1130 hrs IST of 15th April, 2017.

**(CHARAN SINGH)
Scientist-E**

Copy to: DFDD, Pune/ACWC Kolkata /ACWC Chennai/CWC Vishakhapatnam/CWC Bhubaneswar/MO port Blair..

Spatial rainfall distribution: Isolated: <25%, A few: 26-50%, Many: 51-75%, Most: 76-100%
Rainfall amount (mm): Heavy rain: 64.5 – 124.4, Very heavy rain: 124.5 – 244.4, Extremely heavy rain: 244.5 or more.



Spatial rainfall distribution: Isolated: <25%, A few: 26-50%, Many: 51-75%, Most: 76-100%
Rainfall amount (mm): Heavy rain: 64.5 – 124.4, Very heavy rain: 124.5 – 244.4, Extremely heavy rain: 244.5 or more.



India Meteorological Department
Earth System Science Organisation
(Ministry of Earth Sciences)

Bulletin No.: 02 (BOB 01/2017)

Time of issue: 1100 hours IST

Dated: 15.04.2017

FROM: INDIA METEOROLOGICAL DEPARTMENT

To: CONTROL ROOM, NDM, MINISTRY OF HOME AFFAIRS

CONTROL ROOM NDMA

CABINET SECRETARIAT

PS TO HON'BLE MINISTER FOR S & T AND EARTH SCIENCES

SECRETARY, MoES

SECRETARY, DST

H.Q. (INTEGRATED DEFENCE STAFF AND CDS)

DIRECTOR GENERAL, DOORDARSHAN

DIRECTOR GENERAL, AIR

PIB MoES

UNI

D.G. NATIONAL DISASTER RESPONSE FORCE (NDRF)

CHIEF SECRETARY, ANDAMAN & NICOBAR ISLANDS

Sub: Depression over southeast and adjoining eastcentral Bay of Bengal

The depression over southeast Bay of Bengal moved north-northeastwards with a speed of 20 kmph during past 3 hours and lay centred at 0830 hrs IST of today, the 15th April, 2017 over southeast & adjoining eastcentral Bay of Bengal near Latitude 12.5° N and Longitude 88.3 °E, about 500 km west-southwest of Maya Bandar (Andaman & Nicobar Islands) and 950 km south-southwest of Kyaukpyu (Myanmar). The system is most likely to intensify further into a deep depression during next 24 hours. It is most likely to move north-northeastwards and cross Myanmar coast between Sittwe and Sandway (Myanmar) by forenoon of 17th April.

Warning:

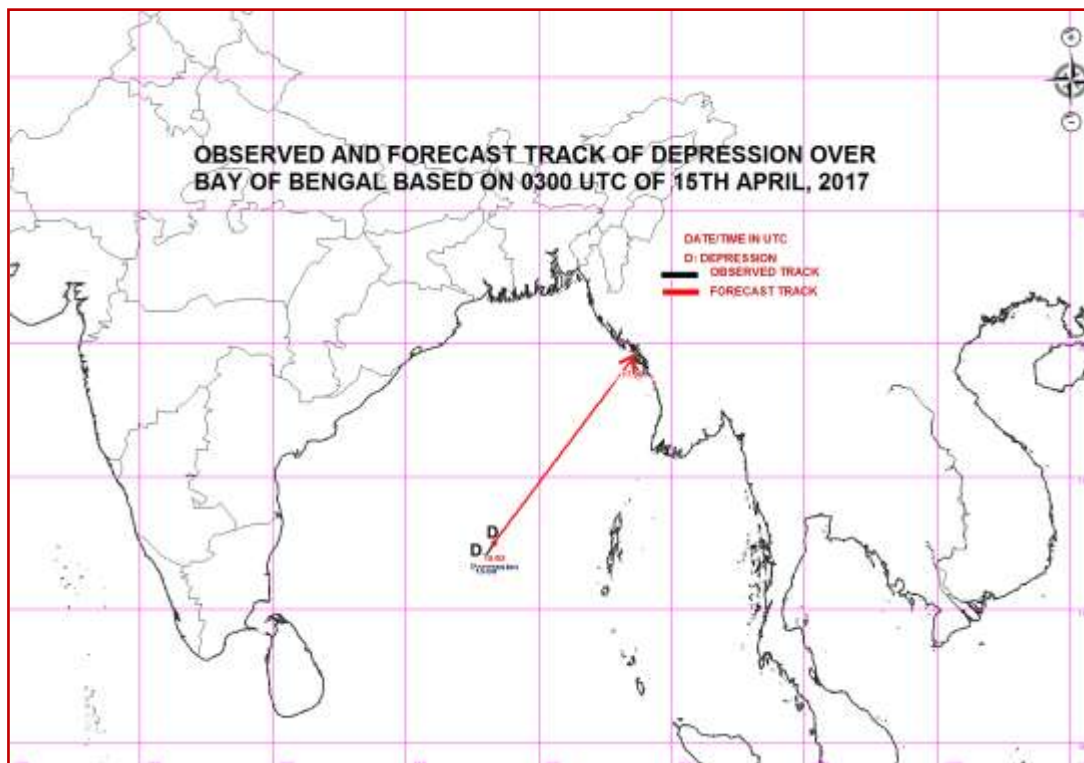
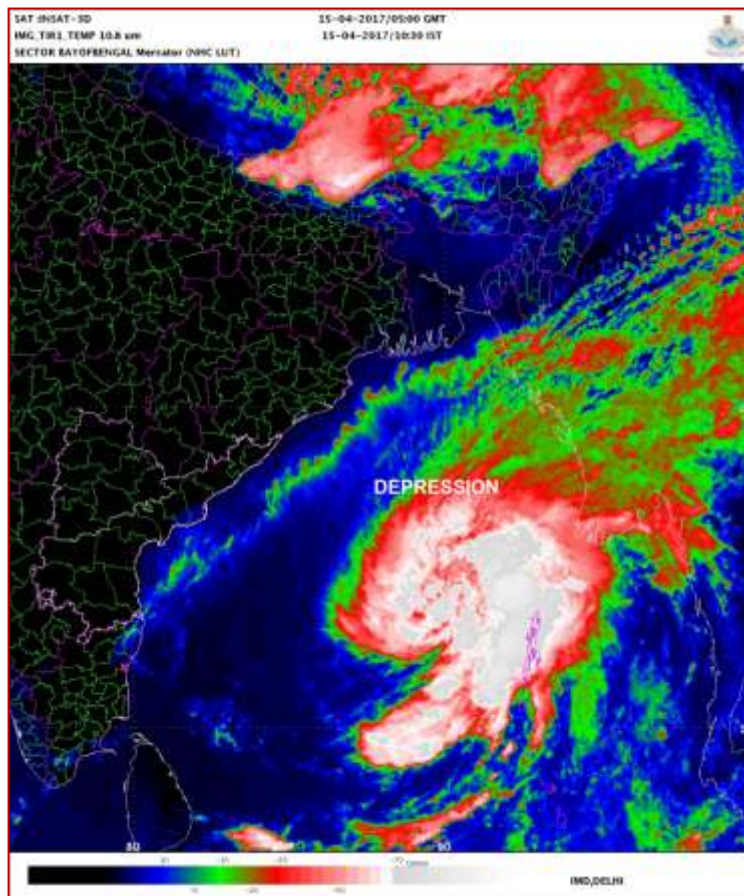
- (i) **Heavy Rainfall Warning:** Rainfall at most places with heavy rainfall at isolated places very likely to occur over Andaman Islands during next 24 hrs and isolated heavy rainfalls during subsequent 24 hours.
- (ii) **Wind warning:** Squally winds speed reaching 50-60 kmph gusting to 70 kmph would prevail over Andaman Islands and adjoining Sea areas during next 48 hours.
- (iii) **Sea condition:** Sea condition would be very rough along & off Andaman Islands during next 48 hours.
- (iv) **Fishermen Warning:** Fishermen are advised not to venture into sea along & off Andaman Islands during next 48 hrs. Fishermen out at sea are advised to return to the coast

The next bulletin will be issued at 2030 hrs IST of 15th April, 2017.

(NARESH KUMAR)
Scientist-D

Copy to: DFDD, Pune/ACWC Kolkata /ACWC Chennai/CWC Vishakhapatnam/CWC Bhubaneswar/MO port Blair..

Spatial rainfall distribution: Isolated: <25%, A few: 26-50%, Many: 51-75%, Most: 76-100%
Rainfall amount (mm): Heavy rain: 64.5 – 124.4, Very heavy rain: 124.5 – 244.4, Extremely heavy rain: 244.5 or more.



Spatial rainfall distribution: Isolated: <25%, A few: 26-50%, Many: 51-75%, Most: 76-100%
Rainfall amount (mm): Heavy rain: 64.5 – 124.4, Very heavy rain: 124.5 – 244.4, Extremely heavy rain: 244.5 or more.



**India Meteorological Department
Earth System Science Organisation
(Ministry of Earth Sciences)**

Bulletin No.: 03 (BOB 01/2017)

Time of issue: 1400 hours IST

Dated: 15.04.2017

FROM: INDIA METEOROLOGICAL DEPARTMENT

To: CONTROL ROOM, NDM, MINISTRY OF HOME AFFAIRS

CONTROL ROOM NDMA

CABINET SECRETARIAT

PS TO HON'BLE MINISTER FOR S & T AND EARTH SCIENCES

SECRETARY, MoES

SECRETARY, DST

H.Q. (INTEGRATED DEFENCE STAFF AND CDS)

DIRECTOR GENERAL, DOORDARSHAN

DIRECTOR GENERAL, AIR

PIB MoES

UNI

D.G. NATIONAL DISASTER RESPONSE FORCE (NDRF)

CHIEF SECRETARY, ANDAMAN & NICOBAR ISLANDS

Sub: Depression over eastcentral & adjoining southeast Bay of Bengal

The depression over southeast & adjoining eastcentral Bay of Bengal moved north-northeastwards with a speed of 28 kmph during past 06 hours and lay centred at 1130 hrs IST of today, the 15th April, 2017 over eastcentral & adjoining southeast Bay of Bengal near Latitude 13.2° N and Longitude 89.0 °E, about 420 km west-northwest of Maya Bandar (Andaman & Nicobar Islands) and 840 km south-southwest of Kyaukpyu (Myanmar). The system is most likely to intensify further into a deep depression during next 24 hours. It is most likely to move north-northeastwards and cross Myanmar coast between Sittwe and Sandway (Myanmar) by forenoon of 17th April.

Warning:

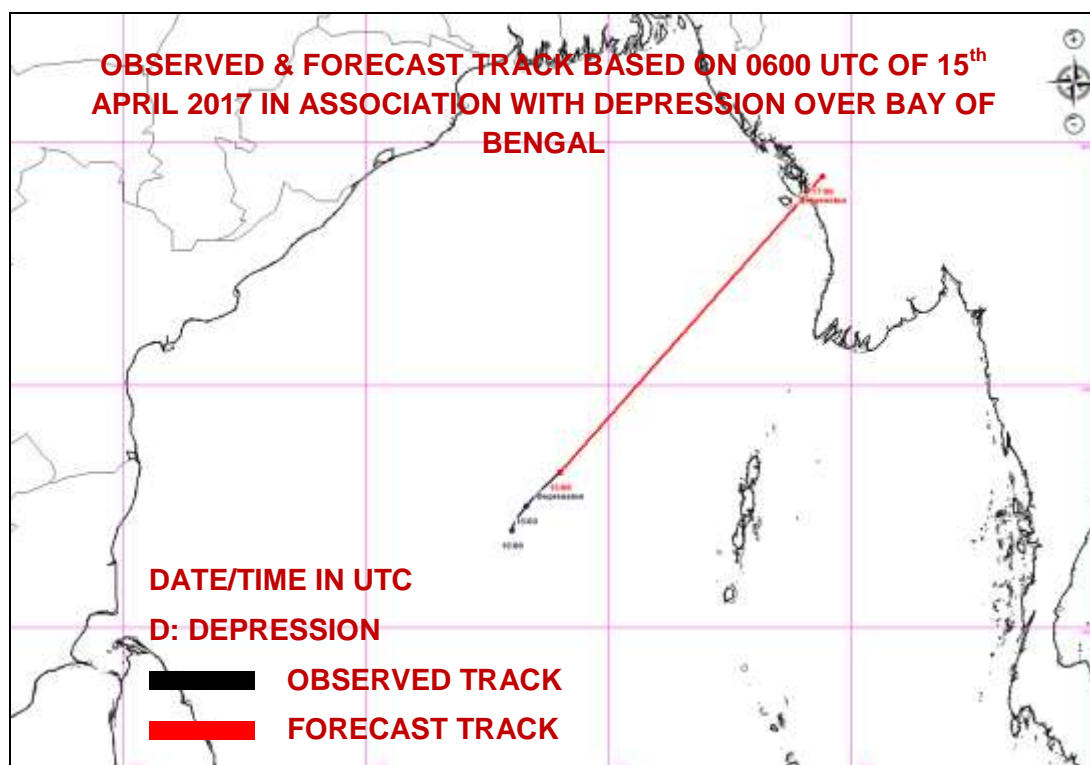
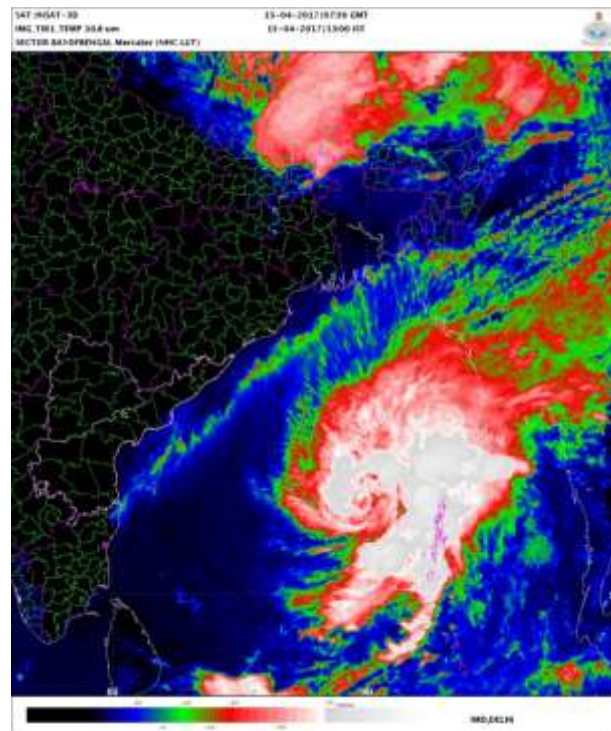
- (i) Heavy Rainfall Warning:** Rainfall at most places with heavy rainfall at isolated places very likely to occur over Andaman Islands during next 24 hrs and isolated heavy rainfalls during subsequent 24 hours.
- (ii) Wind warning:** Squally winds speed reaching 50-60 kmph gusting to 70 kmph would prevail over Andaman Islands and adjoining Sea areas during next 48 hours.
- (iii) Sea condition:** Sea condition would be very rough along & off Andaman Islands during next 48 hours.
- (iv) Fishermen Warning:** Fishermen are advised not to venture into sea along & off Andaman Islands during next 48 hrs. Fishermen out at sea are advised to return to the coast

The next bulletin will be issued at 2030 hrs IST of 15th April, 2017.

**(NARESH KUMAR)
Scientist-D**

Copy to: DFDD, Pune/ACWC Kolkata /ACWC Chennai/CWC Vishakhapatnam/CWC Bhubaneswar/MO port Blair..

Spatial rainfall distribution: Isolated: <25%, A few: 26-50%, Many: 51-75%, Most: 76-100%
Rainfall amount (mm): Heavy rain: 64.5 – 124.4, Very heavy rain: 124.5 – 244.4, Extremely heavy rain: 244.5 or more.



Spatial rainfall distribution: Isolated: <25%, A few: 26-50%, Many: 51-75%, Most: 76-100%
 Rainfall amount (mm): Heavy rain: 64.5 – 124.4, Very heavy rain: 124.5 – 244.4, Extremely heavy rain: 244.5 or more.



**India Meteorological Department
Earth System Science Organisation
(Ministry of Earth Sciences)**

Bulletin No.: 04 (BOB 01/2017)

Time of issue: 1700 hours IST

Dated: 15.04.2017

FROM: INDIA METEOROLOGICAL DEPARTMENT

**To: CONTROL ROOM, NDM, MINISTRY OF HOME AFFAIRS
CONTROL ROOM NDMA
CABINET SECRETARIAT
PS TO HON'BLE MINISTER FOR S & T AND EARTH SCIENCES
SECRETARY, MoES
SECRETARY, DST
H.Q. (INTEGRATED DEFENCE STAFF AND CDS)
DIRECTOR GENERAL, DOORDARSHAN
DIRECTOR GENERAL, AIR
PIB MoES
UNI
D.G. NATIONAL DISASTER RESPONSE FORCE (NDRF)
CHIEF SECRETARY, ANDAMAN & NICOBAR ISLANDS**

Sub: Deep Depression over eastcentral Bay of Bengal

The depression over eastcentral and adjoining southeast Bay of Bengal moved northeastwards with a speed of 28 kmph during past 06 hours, intensified into a deep depression and lay centred at 1430 hrs IST of today, the 15th April, 2017 over eastcentral Bay of Bengal near Latitude 13.7° N and Longitude 89.5 °E, about 350 km west-northwest of Maya Bandar (Andaman & Nicobar Islands) and 740 km south-southwest of Kyaukpyu (Myanmar). The system is most likely to intensify further into a cyclonic storm during next 12 hours. It is most likely to move north-northeastwards and cross Myanmar coast between Sittwe and Sandway (Myanmar) by morning of 17th April 2017.

Observed and forecast track positions and intensity of the system are given below.

Date/time(IST)	Position (lat. 0N/ long. 0E)	Maximum sustained surface wind speed (kmph)	Category of cyclonic Disturbance
15.04.2017/1430	13.7/89.5	50-60 gusting to 70	Deep Depression
15.04.2017/1730	14.1/89.9	55-65 gusting to 75	Deep Depression
15.04.2017/2330	15.0/90.8	60-70 gusting to 80	Cyclonic Storm
16.04.2017/0530	15.9/91.6	70-80 gusting to 90	Cyclonic Storm
16.04.2017/1130	16.7/92.3	70-80 gusting to 90	Cyclonic Storm
16.04.2017/1730	17.6/93.1	65-75 gusting to 85	Cyclonic Storm
17-04-2016/0530	19.2/94.4	60-70 gusting to 80	Cyclonic Storm
17-12-2016/1730	20.4/95.5	35-45 gusting to 55	Depression

Warning:

- (i) **Heavy Rainfall Warning:** Rainfall at most places with heavy rainfall at isolated places very likely to occur over Andaman Islands during next 24 hrs and isolated heavy rainfalls during subsequent 24 hours.
- (ii) **Wind warning:** Squally winds speed reaching 50-60 kmph gusting to 70 kmph would prevail over Andaman Islands and adjoining Sea areas during next 48 hours.
- (iii) **Sea condition:** Sea condition would be very rough along & off Andaman Islands during next 36 hours.

Spatial rainfall distribution: Isolated: <25%, A few: 26-50%, Many: 51-75%, Most: 76-100%

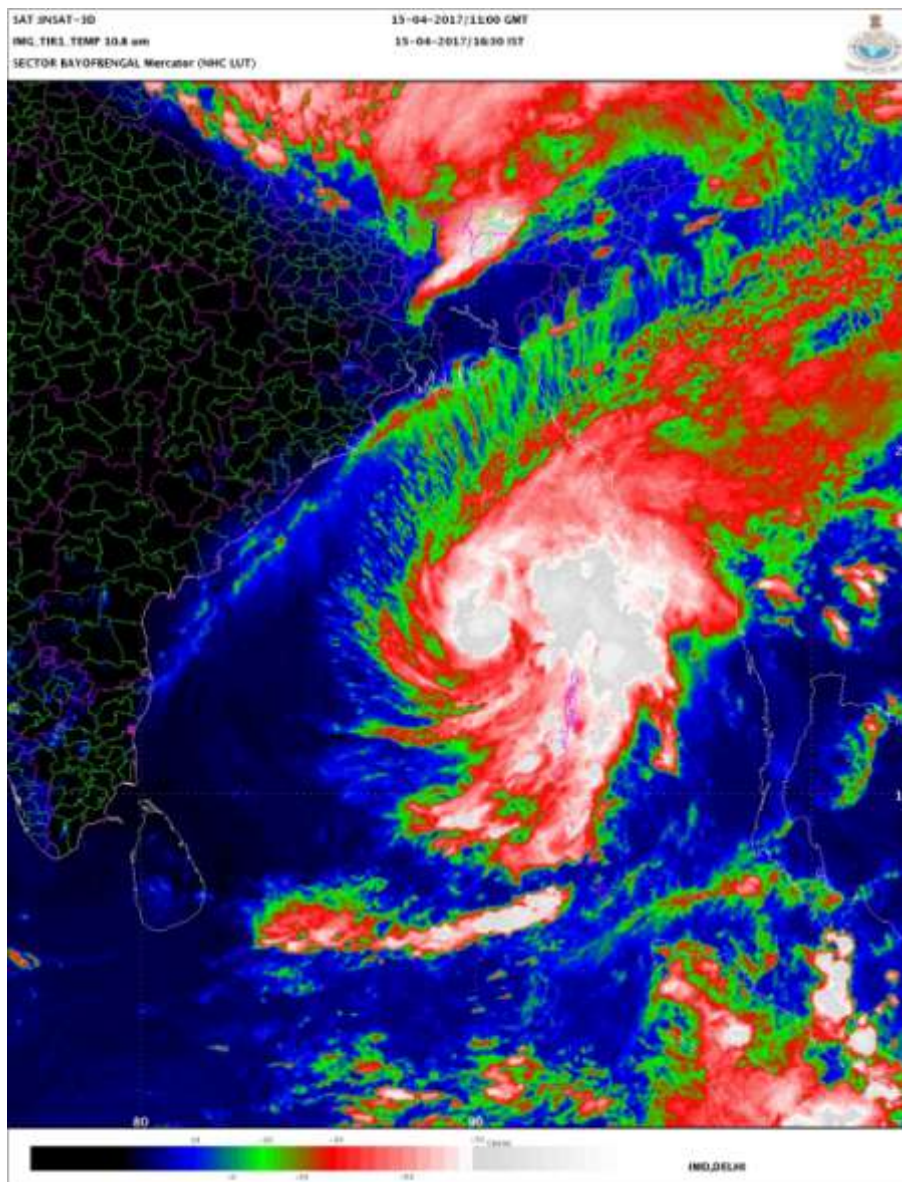
Rainfall amount (mm): Heavy rain: 64.5 – 124.4, Very heavy rain: 124.5 – 244.4, Extremely heavy rain: 244.5 or more.

- (iv) **Fishermen Warning:** Fishermen are advised not to venture into sea along & off Andaman Islands during next 48 hrs. Fishermen out at sea are advised to return to the coast

The next bulletin will be issued at 2030 hrs IST of 15th April, 2017.

**(M. Mohapatra)
Scientist-G**

Copy to: DFDD, Pune/ACWC Kolkata /ACWC Chennai/CWC Vishakhapatnam/CWC Bhubaneswar/MO port Blair.



Spatial rainfall distribution: Isolated: <25%, A few: 26-50%, Many: 51-75%, Most: 76-100%
Rainfall amount (mm): Heavy rain: 64.5 – 124.4, Very heavy rain: 124.5 – 244.4, Extremely heavy rain: 244.5 or more.



**India Meteorological Department
Earth System Science Organisation
(Ministry of Earth Sciences)**

Bulletin No.: 05 (BOB 01/2017)

Time of issue: 2000 hours IST

Dated: 15.04.2017

FROM: INDIA METEOROLOGICAL DEPARTMENT

**To: CONTROL ROOM, NDM, MINISTRY OF HOME AFFAIRS
CONTROL ROOM NDMA
CABINET SECRETARIAT
PS TO HON'BLE MINISTER FOR S & T AND EARTH SCIENCES
SECRETARY, MoES
SECRETARY, DST
H.Q. (INTEGRATED DEFENCE STAFF AND CDS)
DIRECTOR GENERAL, DOORDARSHAN
DIRECTOR GENERAL, AIR
PIB MoES
UNI
D.G. NATIONAL DISASTER RESPONSE FORCE (NDRF)
CHIEF SECRETARY, ANDAMAN & NICOBAR ISLANDS**

Sub: Deep Depression over eastcentral Bay of Bengal

The deep depression over eastcentral Bay of Bengal moved further northeastwards with a speed of 28 kmph during past 06 hours and lay centred at 1730 hrs IST of today, the 15th April, 2017 over eastcentral Bay of Bengal near Latitude 14.3° N and Longitude 90.0°E, about 340 km west-northwest of Maya Bandar (Andaman & Nicobar Islands) and 680 km south-southwest of Kyaukpyu (Myanmar). The system is most likely to intensify further into a cyclonic storm during next 12 hours. It is most likely to move north-northeastwards and cross Myanmar coast between Sittwe and Sandoway (Myanmar) by morning of 17th April 2017.

Observed and forecast track positions and intensity of the system are given below.

Date/time(IST)	Position (lat. °N/ long. °E)	Maximum sustained surface wind speed (kmph)	Category of cyclonic Disturbance
15.04.2017/1730	14.3/90.1	55-65 gusting to 75	Deep Depression
15.04.2017/2330	15.2/91.0	60-70 gusting to 80	Cyclonic Storm
16.04.2017/0530	16.1/91.8	70-80 gusting to 90	Cyclonic Storm
16.04.2017/1130	16.9/92.5	70-80 gusting to 90	Cyclonic Storm
16.04.2017/1730	17.7/93.2	65-75 gusting to 85	Cyclonic Storm
17-04-2016/0530	19.4/94.5	60-70 gusting to 80	Cyclonic Storm
17-12-2016/1730	20.7/95.8	35-45 gusting to 55	Depression

Warning:

- (i) Heavy Rainfall Warning:** Rainfall at most places with heavy rainfall at isolated places very likely to occur over Andaman Islands during next 12 hrs and isolated heavy rainfalls during subsequent 24 hours.
- (ii) Wind warning:** Squally winds speed reaching 50-60 kmph gusting to 70 kmph would prevail over Andaman Islands and adjoining Sea areas during next 36 hours.
- (iii) Sea condition:** Sea condition would be very rough along & off Andaman Islands during next 36 hours.

Spatial rainfall distribution: Isolated: <25%, A few: 26-50%, Many: 51-75%, Most: 76-100%

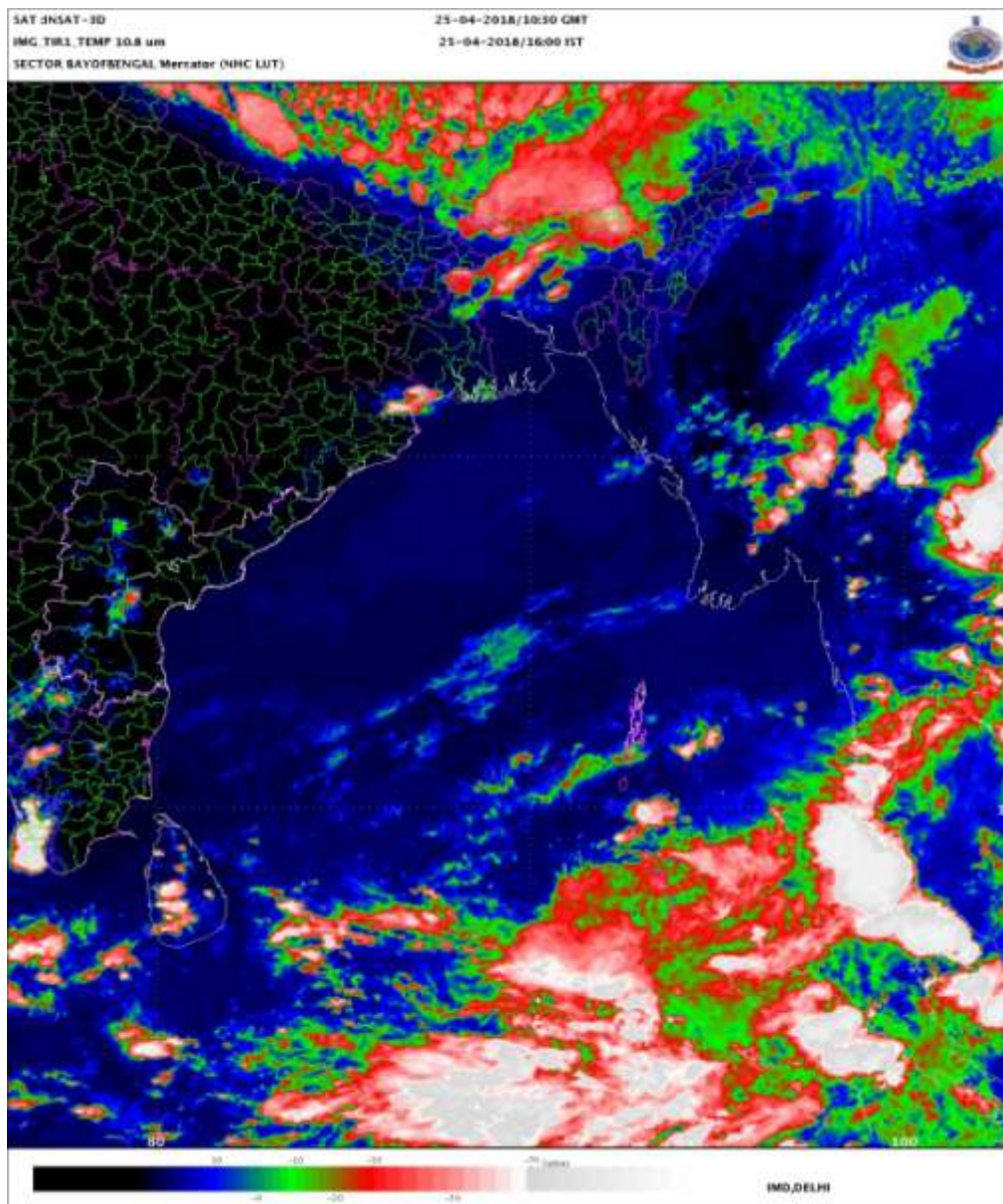
Rainfall amount (mm): Heavy rain: 64.5 – 124.4, Very heavy rain: 124.5 – 244.4, Extremely heavy rain: 244.5 or more.

- (iv) **Fishermen Warning:** Fishermen are advised not to venture into sea along & off Andaman Islands during next 36 hrs. Fishermen out at sea are advised to return to the coast

The next bulletin will be issued at 0230 hrs IST of 16th April, 2017.

**(Naresh KUMAR)
Scientist-D**

Copy to: DFDD, Pune/ACWC Kolkata /ACWC Chennai/CWC Vishakhapatnam/CWC Bhubaneswar/MO port Blair.



Spatial rainfall distribution: Isolated: <25%, A few: 26-50%, Many: 51-75%, Most: 76-100%
Rainfall amount (mm): Heavy rain: 64.5 – 124.4, Very heavy rain: 124.5 – 244.4, Extremely heavy rain: 244.5 or more.



**India Meteorological Department
Earth System Science Organisation
(Ministry of Earth Sciences)**

Bulletin No.: 06 (BOB 01/2017)

Time of issue: 0230 hours IST

Dated: 16.04.2017

FROM: INDIA METEOROLOGICAL DEPARTMENT

**To: CONTROL ROOM, NDM, MINISTRY OF HOME AFFAIRS
CONTROL ROOM NDMA
CABINET SECRETARIAT
PS TO HON'BLE MINISTER FOR S & T AND EARTH SCIENCES
SECRETARY, MoES
SECRETARY, DST
H.Q. (INTEGRATED DEFENCE STAFF AND CDS)
DIRECTOR GENERAL, DOORDARSHAN
DIRECTOR GENERAL, AIR
PIB MoES
UNI
D.G. NATIONAL DISASTER RESPONSE FORCE (NDRF)
CHIEF SECRETARY, ANDAMAN & NICOBAR ISLANDS**

Sub: Deep Depression intensified into Cyclonic Storm (Maarutha) over eastcentral Bay of Bengal

The deep depression over eastcentral Bay of Bengal moved north-northeastwards with a speed of 26 kmph during past 06 hours, intensifying further into a cyclonic storm (Maarutha) and lay centred at 2330 hrs IST of yesterday, the 15th April, 2017 over eastcentral Bay of Bengal near Latitude 15.3° N and Longitude 91.0°E, about 330 km west-northwest of Maya Bandar (Andaman & Nicobar Islands) and 530 km south-southwest of Kyaukpyu (Myanmar). The system is very likely to intensify and move north-northeastwards and cross Myanmar coast between Sittwe and Sandoway (Myanmar) by morning of 17th April 2017.

Observed and forecast track positions and intensity of the system are given below.

Date/time(IST)	Position (lat. °N/ long. °E)	Maximum sustained surface wind speed (kmph)	Category of cyclonic Disturbance
15.04.2017/2330	15.3/91.0	60-70 gusting to 80	Cyclonic Storm
16.04.2017/0530	16.2/91.9	65-75 gusting to 85	Cyclonic Storm
16.04.2017/1130	17.1/92.7	70-80 gusting to 90	Cyclonic Storm
16.04.2017/1730	17.9/93.4	75-85 gusting to 95	Cyclonic Storm
16-04-2017/2330	18.7/94.1	75-85 gusting to 95	Cyclonic Storm
17-04-2017/1130	20.4/95.4	60-70 gusting to 80	Cyclonic Storm
17-04-2017/2330	21.7/96.7	35-45 gusting to 55	Depression

Warning:

- (i) Heavy Rainfall Warning:** Rainfall at most places with heavy rainfall at isolated places very likely to occur over Andaman Islands during next 24 hrs.
- (ii) Wind warning:** Squally winds speed reaching 60-70 kmph gusting to 80 kmph would prevail over Andaman Islands and adjoining Sea areas during next 24 hours.
- (iii) Sea condition:** Sea condition would be very rough along & off Andaman Islands during next 24 hours.

Spatial rainfall distribution: Isolated: <25%, A few: 26-50%, Many: 51-75%, Most: 76-100%

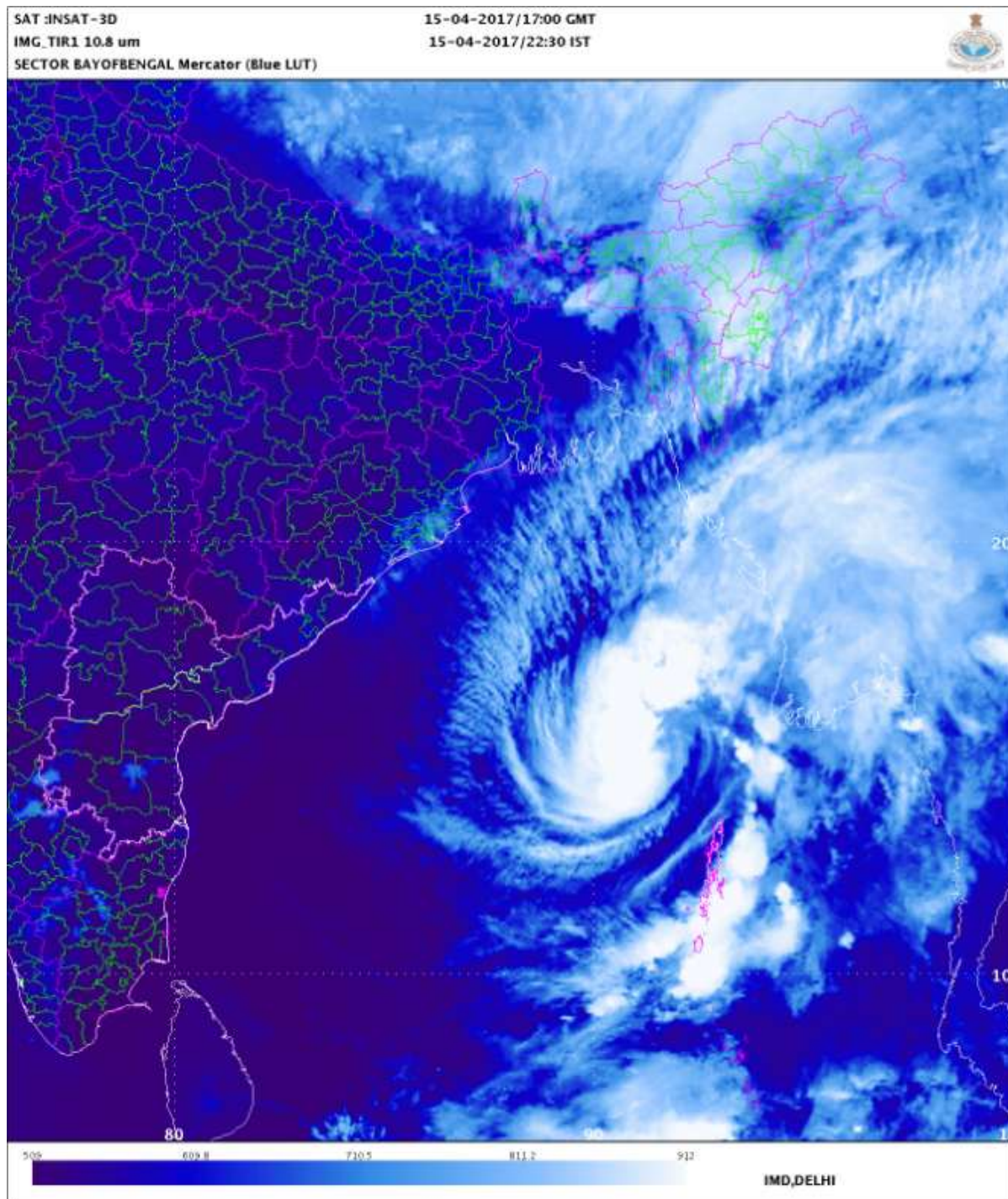
Rainfall amount (mm): Heavy rain: 64.5 – 124.4, Very heavy rain: 124.5 – 244.4, Extremely heavy rain: 244.5 or more.

- (iv) **Fishermen Warning:** Fishermen are advised not to venture into sea along & off Andaman Islands during next 24 hrs. Fishermen out at sea are advised to return to the coast

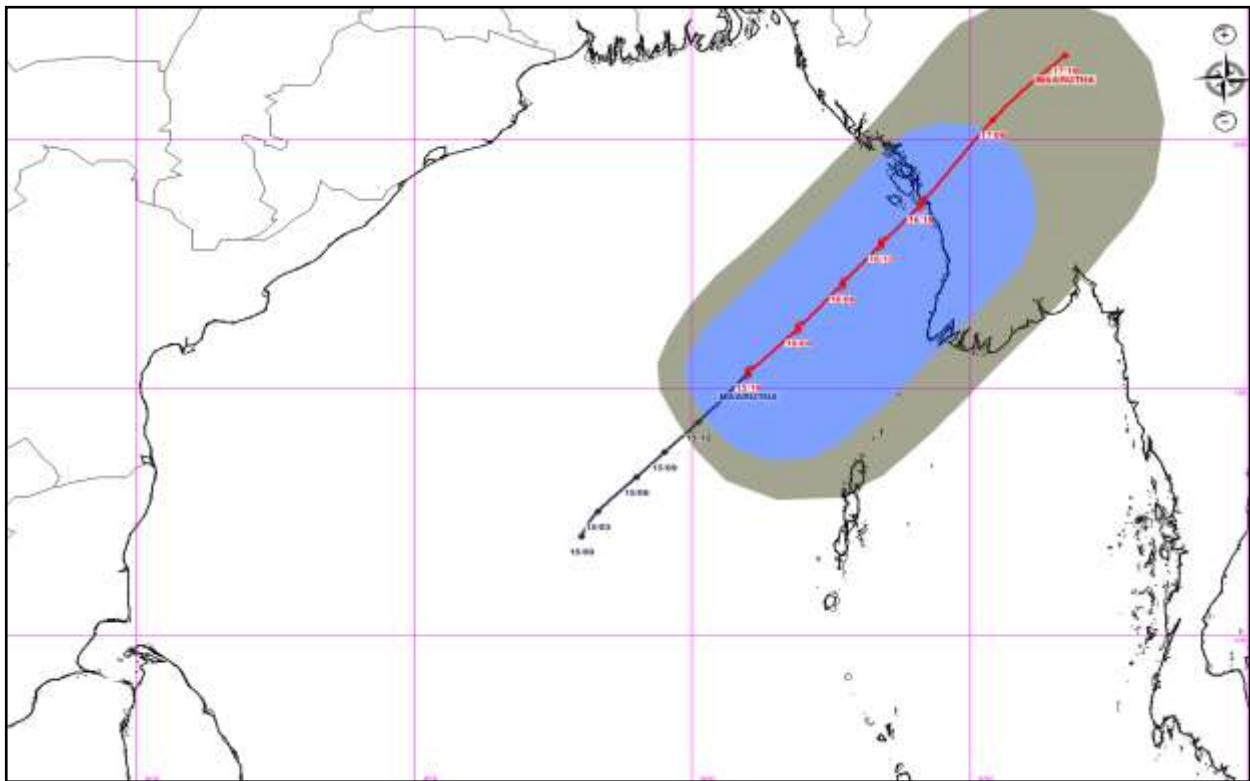
The next bulletin will be issued at 0530 hrs IST of 16th April, 2017.

**(D.R. Pattanaik)
Scientist-E**

Copy to: DFDD, Pune/ACWC Kolkata /ACWC Chennai/CWC Vishakhapatnam/CWC Bhubaneswar/MO port Blair.



Spatial rainfall distribution: Isolated: <25%, A few: 26-50%, Many: 51-75%, Most: 76-100%
Rainfall amount (mm): Heavy rain: 64.5 – 124.4, Very heavy rain: 124.5 – 244.4, Extremely heavy rain: 244.5 or more.





**India Meteorological Department
Earth System Science Organisation
(Ministry of Earth Sciences)**

Bulletin No.: 07 (BOB 01/2017)

Time of issue: 0530 hours IST

Dated: 16.04.2017

FROM: INDIA METEOROLOGICAL DEPARTMENT

**To: CONTROL ROOM, NDM, MINISTRY OF HOME AFFAIRS
CONTROL ROOM NDMA
CABINET SECRETARIAT
PS TO HON'BLE MINISTER FOR S & T AND EARTH SCIENCES
SECRETARY, MoES
SECRETARY, DST
H.Q. (INTEGRATED DEFENCE STAFF AND CDS)
DIRECTOR GENERAL, DOORDARSHAN
DIRECTOR GENERAL, AIR
PIB MoES
UNI
D.G. NATIONAL DISASTER RESPONSE FORCE (NDRF)
CHIEF SECRETARY, ANDAMAN & NICOBAR ISLANDS**

Sub: Cyclonic Storm (Maarutha) over eastcentral Bay of Bengal

The cyclonic storm (Maarutha) over eastcentral Bay of Bengal moved northeastwards with a speed of 22 kmph during past 06 hours and lay centred at 0230 hrs IST of today, the 16th April, 2017 over eastcentral Bay of Bengal near Latitude 15.5° N and Longitude 91.2°E, about 340 km west-northwest of Maya Bandar (Andaman & Nicobar Islands) and 500 km south-southwest of Kyaukpyu (Myanmar). The system is very likely to intensify and move north-northeastwards and cross Myanmar coast between Sittwe and Sandoway (Myanmar) by morning of 17th April 2017.

Observed and forecast track positions and intensity of the system are given below.

Date/time(IST)	Position (lat. °N/ long. °E)	Maximum sustained surface wind speed (kmph)	Category of cyclonic Disturbance
16.04.2017/0230	15.5/91.2	60-70 gusting to 80	Cyclonic Storm
16.04.2017/0530	16.2/91.9	65-75 gusting to 85	Cyclonic Storm
16.04.2017/1130	17.1/92.7	70-80 gusting to 90	Cyclonic Storm
16.04.2017/1730	17.9/93.4	75-85 gusting to 95	Cyclonic Storm
16-04-2017/2330	18.7/94.1	75-85 gusting to 95	Cyclonic Storm
17-04-2017/1130	20.4/95.4	60-70 gusting to 80	Cyclonic Storm
17-04-2017/2330	21.7/96.7	35-45 gusting to 55	Depression

Warning:

- (i) Heavy Rainfall Warning:** Rainfall at most places with heavy rainfall at isolated places very likely to occur over Andaman Islands during next 24 hrs.
- (ii) Wind warning:** Squally winds speed reaching 60-70 kmph gusting to 80 kmph would prevail over Andaman Islands and adjoining Sea areas during next 24 hours.
- (iii) Sea condition:** Sea condition would be very rough along & off Andaman Islands during next 24 hours.
- (iv) Fishermen Warning:** Fishermen are advised not to venture into sea along & off Andaman Islands during next 24 hrs. Fishermen out at sea are advised to return to the coast

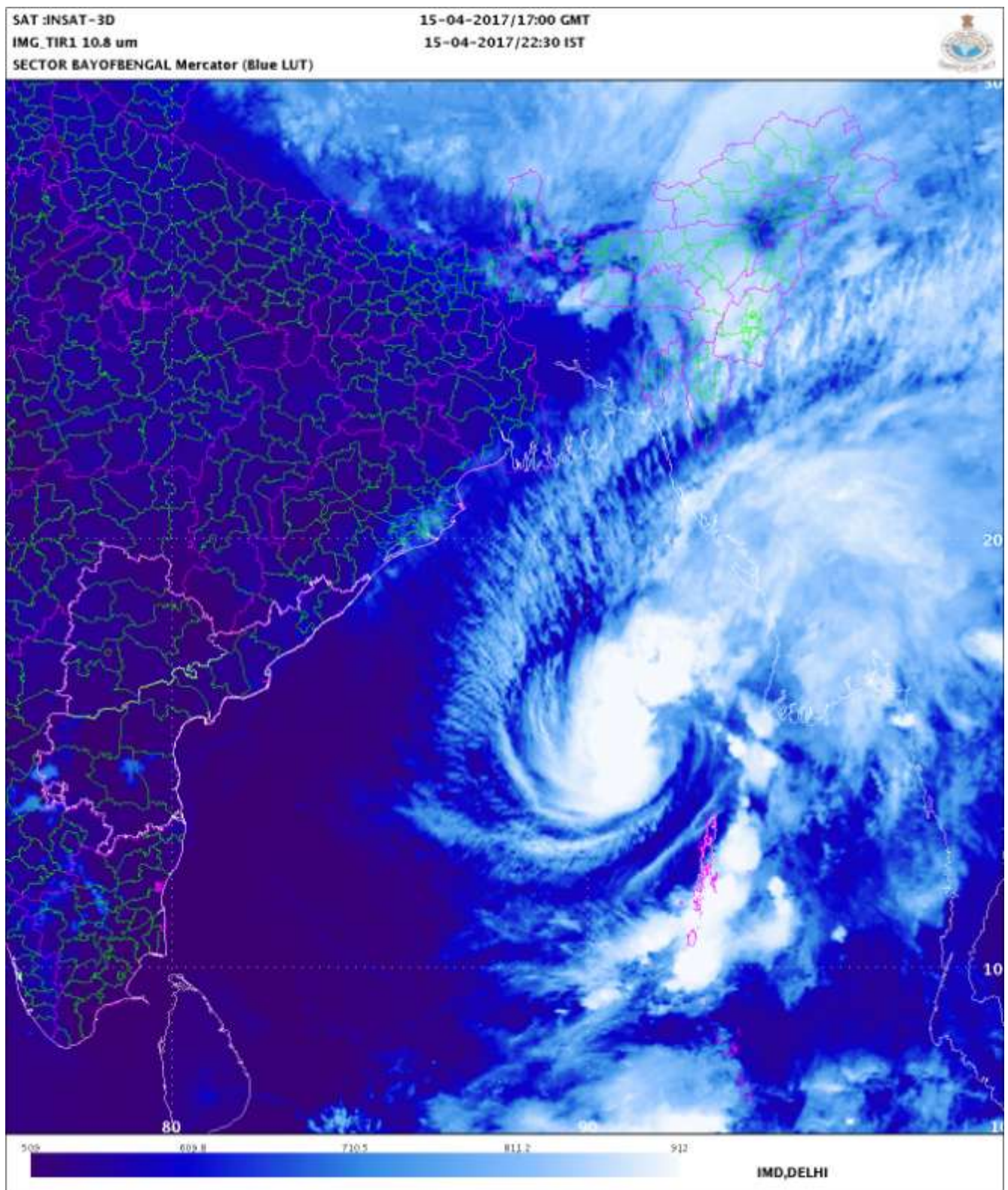
Spatial rainfall distribution: Isolated: <25%, A few: 26-50%, Many: 51-75%, Most: 76-100%

Rainfall amount (mm): Heavy rain: 64.5 – 124.4, Very heavy rain: 124.5 – 244.4, Extremely heavy rain: 244.5 or more.

The next bulletin will be issued at 0830 hrs IST of 16th April, 2017.

**(D.R. Pattanaik)
Scientist-E**

Copy to: DFDD, Pune/ACWC Kolkata /ACWC Chennai/CWC Vishakhapatnam/CWC Bhubaneswar/MO port Blair.



Spatial rainfall distribution: Isolated: <25%, A few: 26-50%, Many: 51-75%, Most: 76-100%
Rainfall amount (mm): Heavy rain: 64.5 – 124.4, Very heavy rain: 124.5 – 244.4, Extremely heavy rain: 244.5 or more.



India Meteorological Department
Earth System Science Organisation
(Ministry of Earth Sciences)

Bulletin No.: 08 (BOB 01/2017)

Time of issue: 0830 hours IST

Dated: 16.04.2017

FROM: INDIA METEOROLOGICAL DEPARTMENT

**To: CONTROL ROOM, NDM, MINISTRY OF HOME AFFAIRS
CONTROL ROOM NDMA
CABINET SECRETARIAT
PS TO HON'BLE MINISTER FOR S & T AND EARTH SCIENCES
SECRETARY, MoES
SECRETARY, DST
H.Q. (INTEGRATED DEFENCE STAFF AND CDS)
DIRECTOR GENERAL, DOORDARSHAN
DIRECTOR GENERAL, AIR
PIB MoES
UNI
D.G. NATIONAL DISASTER RESPONSE FORCE (NDRF)
CHIEF SECRETARY, ANDAMAN & NICOBAR ISLANDS**

Sub: Cyclonic Storm (Maarutha) over eastcentral Bay of Bengal

The cyclonic storm (Maarutha) over eastcentral Bay of Bengal moved northeastwards with a speed of 24 kmph during past 06 hours and lay centred at 0530 hrs IST of today, the 16th April, 2017 over eastcentral Bay of Bengal near Latitude 16.2° N and Longitude 92.0°E, about 380 km north-northwest of Maya Bandar (Andaman & Nicobar Islands) and 350 km southwest of Sandoway (Myanmar). The system is likely to move northeastwards and cross Myanmar coast near Sandoway around mid-night of today, the 16th April 2017.

Observed and forecast track positions and intensity of the system are given below.

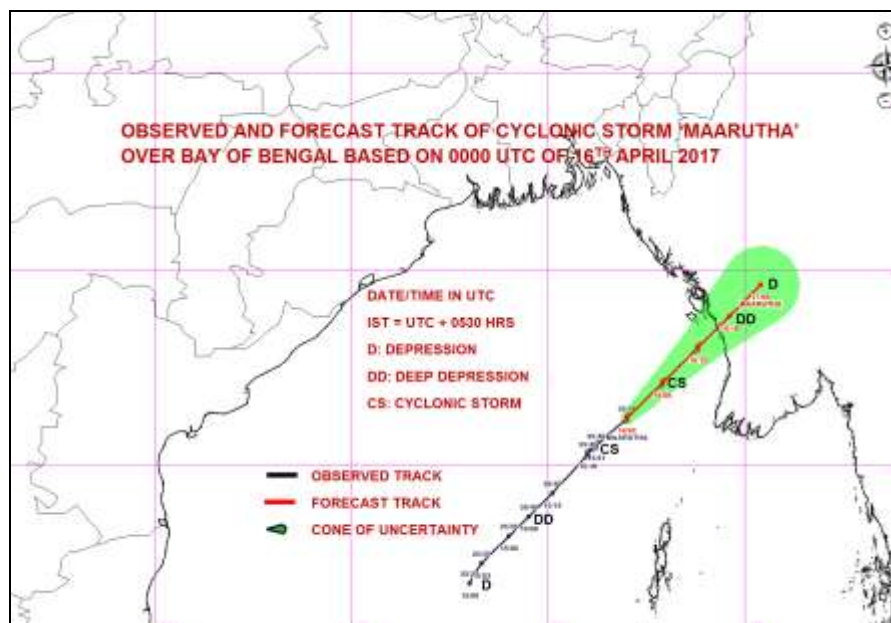
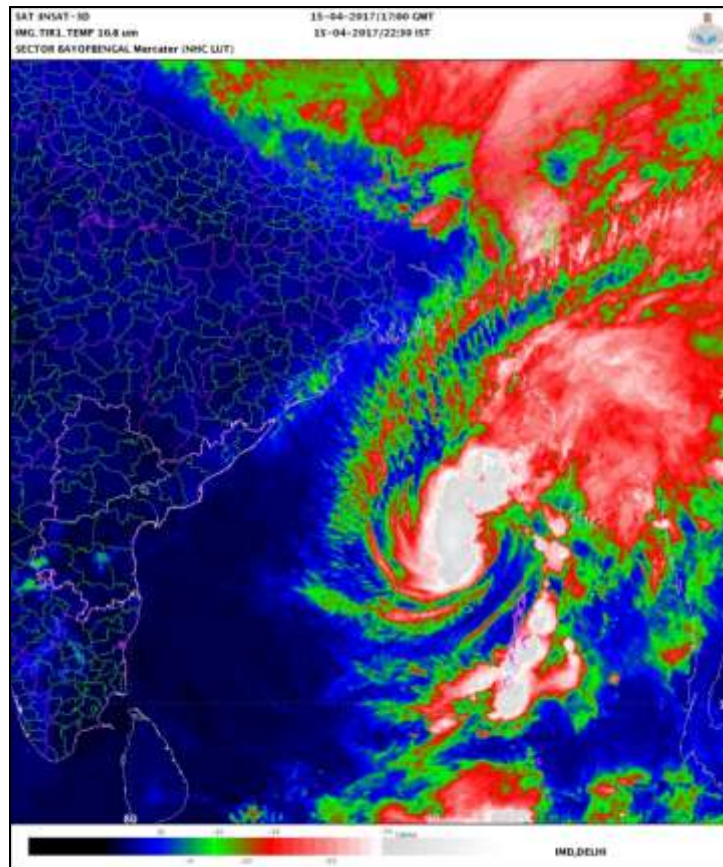
Date/time(IST)	Position (lat. °N/ long. °E)	Maximum sustained surface wind speed (kmph)	Category of cyclonic Disturbance
16.04.2017/0530	16.2/92.0	65-75 gusting to 85	Cyclonic Storm
16.04.2017/1130	17.1/92.9	65-75 gusting to 85	Cyclonic Storm
16.04.2017/1730	18.0/93.8	65-75 gusting to 85	Cyclonic Storm
16-04-2017/2330	18.8/94.6	50-60 gusting to 70	Deep Depression
17-04-2017/0530	19.6/95.4	35-45 gusting to 55	Depression

Warning:

- (i) Heavy Rainfall Warning:** Light to moderate (upto 3 cm) rainfall at most places very likely to occur over Andaman Islands during next 24 hrs.
- (ii) Wind warning:** Squally winds speed reaching 45-55 kmph gusting to 65 kmph would prevail over Andaman Islands and adjoining Sea areas during next 24 hours.
- (iii) Sea condition:** Sea condition would be rough to very rough along & off Andaman Islands during next 24 hours.
- (iv) Fishermen Warning:** Fishermen are advised not to venture into sea along & off Andaman Islands during next 24 hrs.

The next bulletin will be issued at 1130 hrs IST of 16th April, 2017.

Spatial rainfall distribution: Isolated: <25%, A few: 26-50%, Many: 51-75%, Most: 76-100%
Rainfall amount (mm): Heavy rain: 64.5 – 124.4, Very heavy rain: 124.5 – 244.4, Extremely heavy rain: 244.5 or more.



Spatial rainfall distribution: Isolated: <25%, A few: 26-50%, Many: 51-75%, Most: 76-100%
Rainfall amount (mm): Heavy rain: 64.5 – 124.4, Very heavy rain: 124.5 – 244.4, Extremely heavy rain: 244.5 or more.



**India Meteorological Department
Earth System Science Organisation
(Ministry of Earth Sciences)**

Bulletin No.: 09 (BOB 01/2017)

Time of issue: 1100 hours IST

Dated: 16.04.2017

FROM: INDIA METEOROLOGICAL DEPARTMENT

**To: CONTROL ROOM, NDM, MINISTRY OF HOME AFFAIRS
CONTROL ROOM NDMA
CABINET SECRETARIAT
PS TO HON'BLE MINISTER FOR S & T AND EARTH SCIENCES
SECRETARY, MoES
SECRETARY, DST
H.Q. (INTEGRATED DEFENCE STAFF AND CDS)
DIRECTOR GENERAL, DOORDARSHAN
DIRECTOR GENERAL, AIR
PIB MoES
UNI
D.G. NATIONAL DISASTER RESPONSE FORCE (NDRF)
CHIEF SECRETARY, ANDAMAN & NICOBAR ISLANDS**

Sub: Cyclonic Storm (Maarutha) over eastcentral Bay of Bengal

The cyclonic storm (Maarutha) over eastcentral Bay of Bengal further moved northeastwards with a speed of 32 kmph during past 06 hours and lay centred at 0830 hrs IST of today, the 16th April, 2017 over eastcentral Bay of Bengal near Latitude 16.7° N and Longitude 92.5°E, about 420 km nearly north of Maya Bandar (Andaman & Nicobar Islands) and 280 km southwest of Sandoway (Myanmar). The system is likely to move northeastwards and cross Myanmar coast near Sandoway around mid-night of today, the 16th April 2017.

Observed and forecast track positions and intensity of the system are given below.

Date/time(IST)	Position (lat. °N/ long. °E)	Maximum sustained surface wind speed (kmph)	Category of cyclonic Disturbance
16.04.2017/0830	16.7/92.5	65-75 gusting to 85	Cyclonic Storm
16.04.2017/1130	17.1/92.9	65-75 gusting to 85	Cyclonic Storm
16.04.2017/1730	18.0/93.8	65-75 gusting to 85	Cyclonic Storm
16-04-2017/2330	18.8/94.6	50-60 gusting to 70	Deep Depression
17-04-2017/0530	19.6/95.4	35-45 gusting to 55	Depression

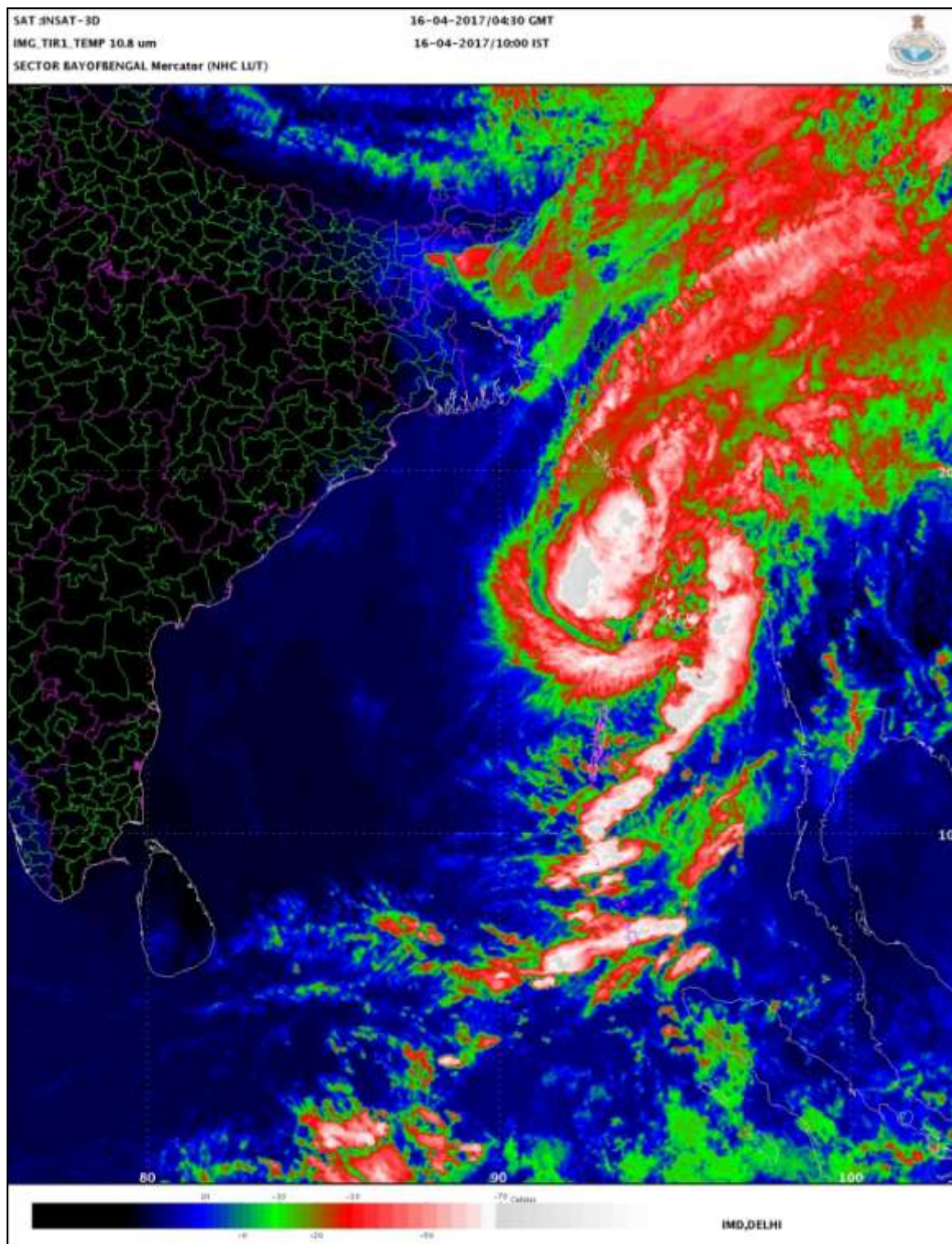
Warning:

- (i) **Heavy Rainfall Warning:** Light to moderate (upto 3 cm) rainfall at many places very likely to occur over Andaman Islands during next 12 hrs.
- (ii) **Wind warning:** Squally winds speed reaching 45-55 kmph gusting to 65 kmph would prevail over Andaman Islands and adjoining Sea areas during next 12 hours.
- (iii) **Sea condition:** Sea condition would be rough to very rough along & off Andaman Islands during next 12 hours.
- (iv) **Fishermen Warning:** Fishermen are advised not to venture into sea along & off Andaman Islands during next 12 hrs.

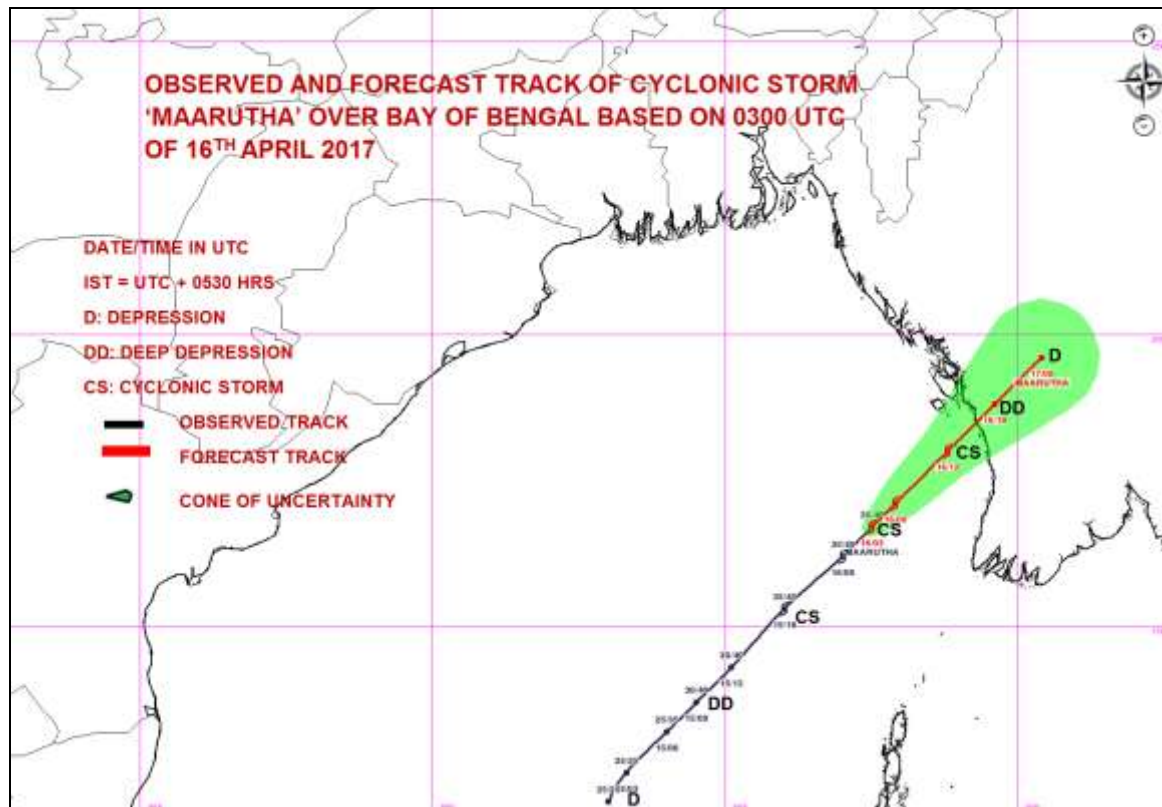
The next bulletin will be issued at 1430 hrs IST of 16th April, 2017.

**(Naresh Kumar)
Scientist-D**

Spatial rainfall distribution: Isolated: <25%, A few: 26-50%, Many: 51-75%, Most: 76-100%
Rainfall amount (mm): Heavy rain: 64.5 – 124.4, Very heavy rain: 124.5 – 244.4, Extremely heavy rain: 244.5 or more.



Spatial rainfall distribution: Isolated: <25%, A few: 26-50%, Many: 51-75%, Most: 76-100%
Rainfall amount (mm): Heavy rain: 64.5 – 124.4, Very heavy rain: 124.5 – 244.4, Extremely heavy rain: 244.5 or more.



Spatial rainfall distribution: Isolated: <25%, A few: 26-50%, Many: 51-75%, Most: 76-100%
 Rainfall amount (mm): Heavy rain: 64.5 – 124.4, Very heavy rain: 124.5 – 244.4, Extremely heavy rain: 244.5 or more.



**India Meteorological Department
Earth System Science Organisation
(Ministry of Earth Sciences)**

Bulletin No.: 10 (BOB 01/2017)

Time of issue: 1400 hours IST

Dated: 16.04.2017

FROM: INDIA METEOROLOGICAL DEPARTMENT

**To: CONTROL ROOM, NDM, MINISTRY OF HOME AFFAIRS
CONTROL ROOM NDMA
CABINET SECRETARIAT
PS TO HON'BLE MINISTER FOR S & T AND EARTH SCIENCES
SECRETARY, MoES
SECRETARY, DST
H.Q. (INTEGRATED DEFENCE STAFF AND CDS)
DIRECTOR GENERAL, DOORDARSHAN
DIRECTOR GENERAL, AIR
PIB MoES
UNI
D.G. NATIONAL DISASTER RESPONSE FORCE (NDRF)
CHIEF SECRETARY, ANDAMAN & NICOBAR ISLANDS**

Sub: Cyclonic Storm (Maarutha) over eastcentral Bay of Bengal

The cyclonic storm (Maarutha) over eastcentral Bay of Bengal further moved northeastwards with a speed of 22 kmph during past 06 hours and lay centred at 1130 hrs IST of today, the 16th April, 2017 over eastcentral Bay of Bengal near Latitude 17.0° N and Longitude 92.9°E, about 450 km nearly north of Maya Bandar (Andaman & Nicobar Islands) and 220 km southwest of Sandoway(Thandwe), Myanmar. The system is likely to move northeastwards and cross Myanmar coast near Sandoway(Thandwe) around mid-night of today, the 16th April 2017.

Observed and forecast track positions and intensity of the system are given below:

Date/time(IST)	Position (lat. °N/ long. °E)	Maximum sustained surface wind speed (kmph)	Category of cyclonic Disturbance
16.04.2017/1130	17.0/92.9	70-80 gusting to 90	Cyclonic Storm
16.04.2017/1730	17.9/93.8	70-80 gusting to 90	Cyclonic Storm
16-04-2017/2330	18.8/94.6	60-70 gusting to 80	Cyclonic Storm
17-04-2017/0530	19.6/95.4	50-60 gusting to 70	Deep Depression
17-04-2017/1130	20.4/96.2	35-45 gusting to 55	Depression

Warning:

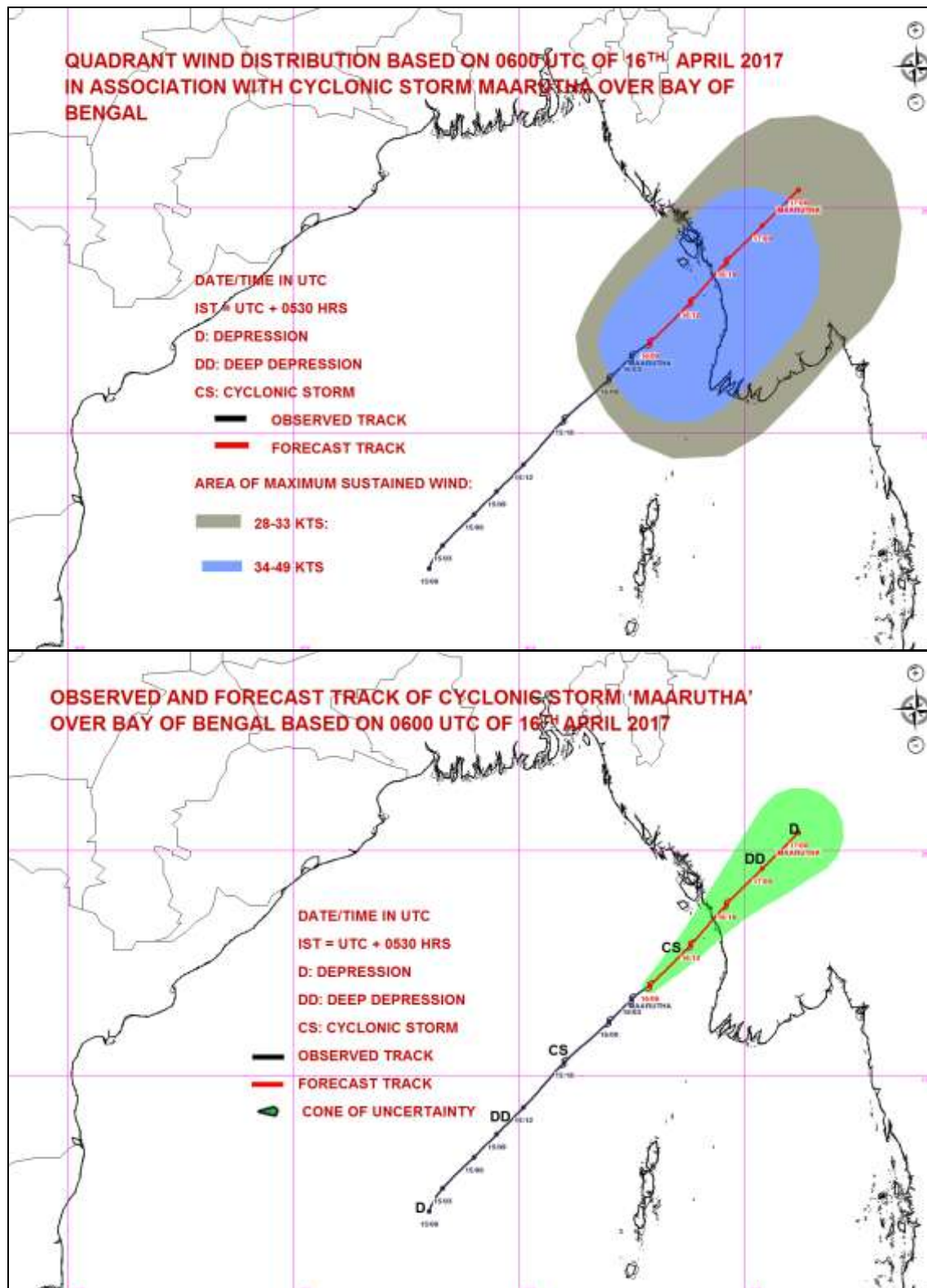
- (i) **Wind warning:** Squally winds speed reaching 40-50 kmph gusting to 60 kmph would prevail over Andaman Islands and adjoining Sea areas during next 12 hours.
- (ii) **Sea condition:** Sea condition would be rough to very rough along & off Andaman Islands during next 12 hours.
- (iii) **Fishermen Warning:** Fishermen are advised not to venture into sea along & off Andaman Islands during next 12 hrs.

The next bulletin will be issued at 1730 hrs IST of 16th April, 2017.

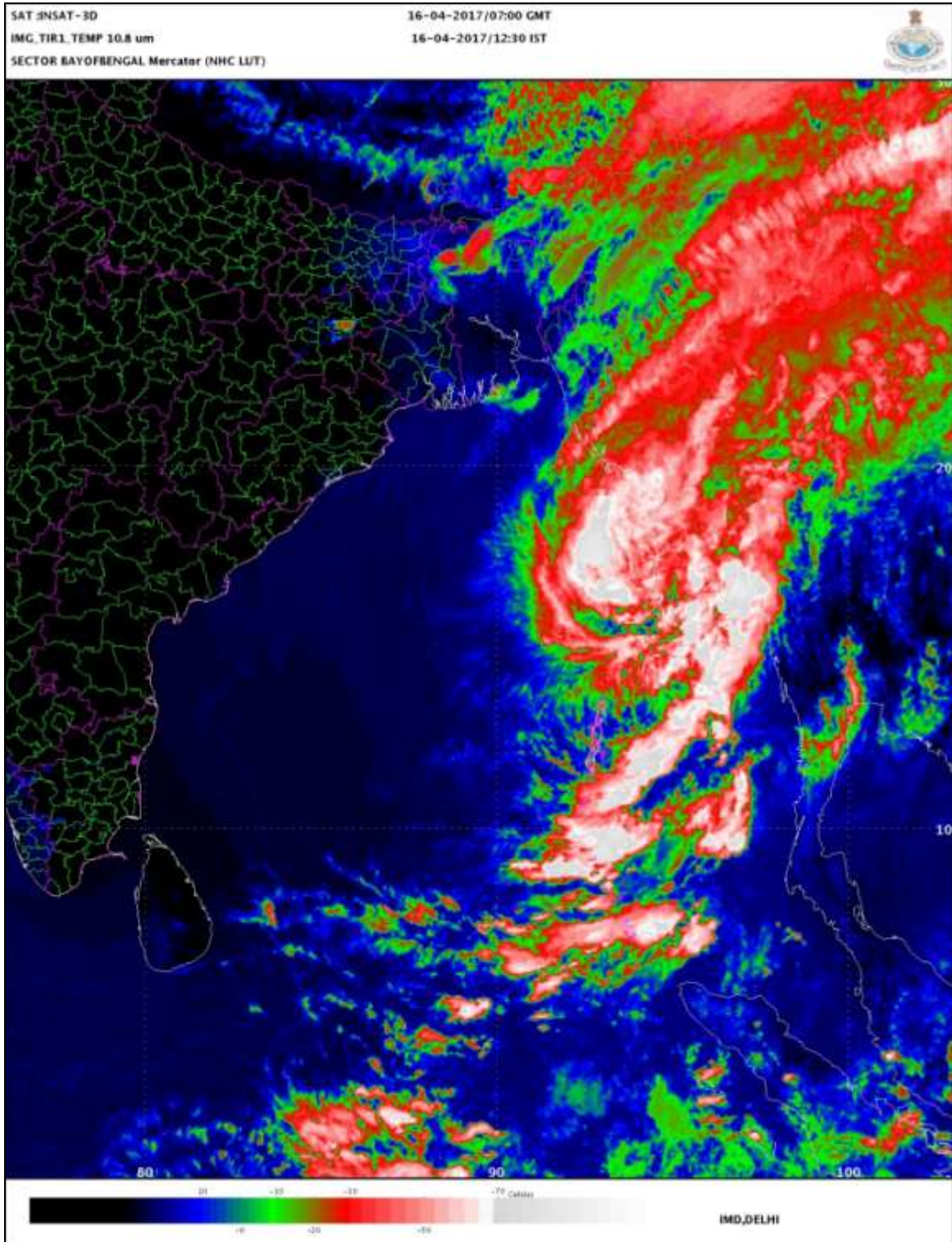
**(Naresh Kumar)
Scientist-D**

Copy to: DFDD, Pune/ACWC Kolkata /ACWC Chennai/CWC Vishakhapatnam/CWC Bhubaneswar/MO port Blair.

Spatial rainfall distribution: Isolated: <25%, A few: 26-50%, Many: 51-75%, Most: 76-100%
Rainfall amount (mm): Heavy rain: 64.5 – 124.4, Very heavy rain: 124.5 – 244.4, Extremely heavy rain: 244.5 or more.



Spatial rainfall distribution: Isolated: <25%, A few: 26-50%, Many: 51-75%, Most: 76-100%
Rainfall amount (mm): Heavy rain: 64.5 – 124.4, Very heavy rain: 124.5 – 244.4, Extremely heavy rain: 244.5 or more.



Spatial rainfall distribution: Isolated: <25%, A few: 26-50%, Many: 51-75%, Most: 76-100%
Rainfall amount (mm): Heavy rain: 64.5 – 124.4, Very heavy rain: 124.5 – 244.4, Extremely heavy rain: 244.5 or more.



**India Meteorological Department
Earth System Science Organisation
(Ministry of Earth Sciences)**

Bulletin No.: 11 (BOB 01/2017)

Time of issue: 1600 hours IST

Dated: 16.04.2017

FROM: INDIA METEOROLOGICAL DEPARTMENT

**To: CONTROL ROOM, NDM, MINISTRY OF HOME AFFAIRS
CONTROL ROOM NDMA
CABINET SECRETARIAT
PS TO HON'BLE MINISTER FOR S & T AND EARTH SCIENCES
SECRETARY, MoES
SECRETARY, DST
H.Q. (INTEGRATED DEFENCE STAFF AND CDS)
DIRECTOR GENERAL, DOORDARSHAN
DIRECTOR GENERAL, AIR
PIB MoES
UNI
D.G. NATIONAL DISASTER RESPONSE FORCE (NDRF)
CHIEF SECRETARY, ANDAMAN & NICOBAR ISLANDS**

Sub: Cyclonic Storm (Maarutha) over eastcentral Bay of Bengal

The cyclonic storm (Maarutha) over eastcentral Bay of Bengal further moved northeastwards with a speed of 19 kmph during past 06 hours and lay centred at 1430 hrs IST of today, the 16th April, 2017 over eastcentral Bay of Bengal near Latitude 17.5° N and Longitude 93.2°E, about 510 km nearly north of Maya Bandar (Andaman & Nicobar Islands) and 160 km southwest of Sandoway(Thandwe), Myanmar. The system is likely to move northeastwards and cross Myanmar coast near Sandoway(Thandwe) around mid-night of today, the 16th April 2017.

Observed and forecast track positions and intensity of the system are given below:

Date/time(IST)	Position (lat. °N/ long. °E)	Maximum sustained surface wind speed (kmph)	Category of cyclonic Disturbance
16.04.2017/1430	17.5/93.2	70-80 gusting to 90	Cyclonic Storm
16.04.2017/1730	17.9/93.8	70-80 gusting to 90	Cyclonic Storm
16-04-2017/2330	18.8/94.6	60-70 gusting to 80	Cyclonic Storm
17-04-2017/0530	19.6/95.4	50-60 gusting to 70	Deep Depression
17-04-2017/1130	20.4/96.2	35-45 gusting to 55	Depression

Warning:

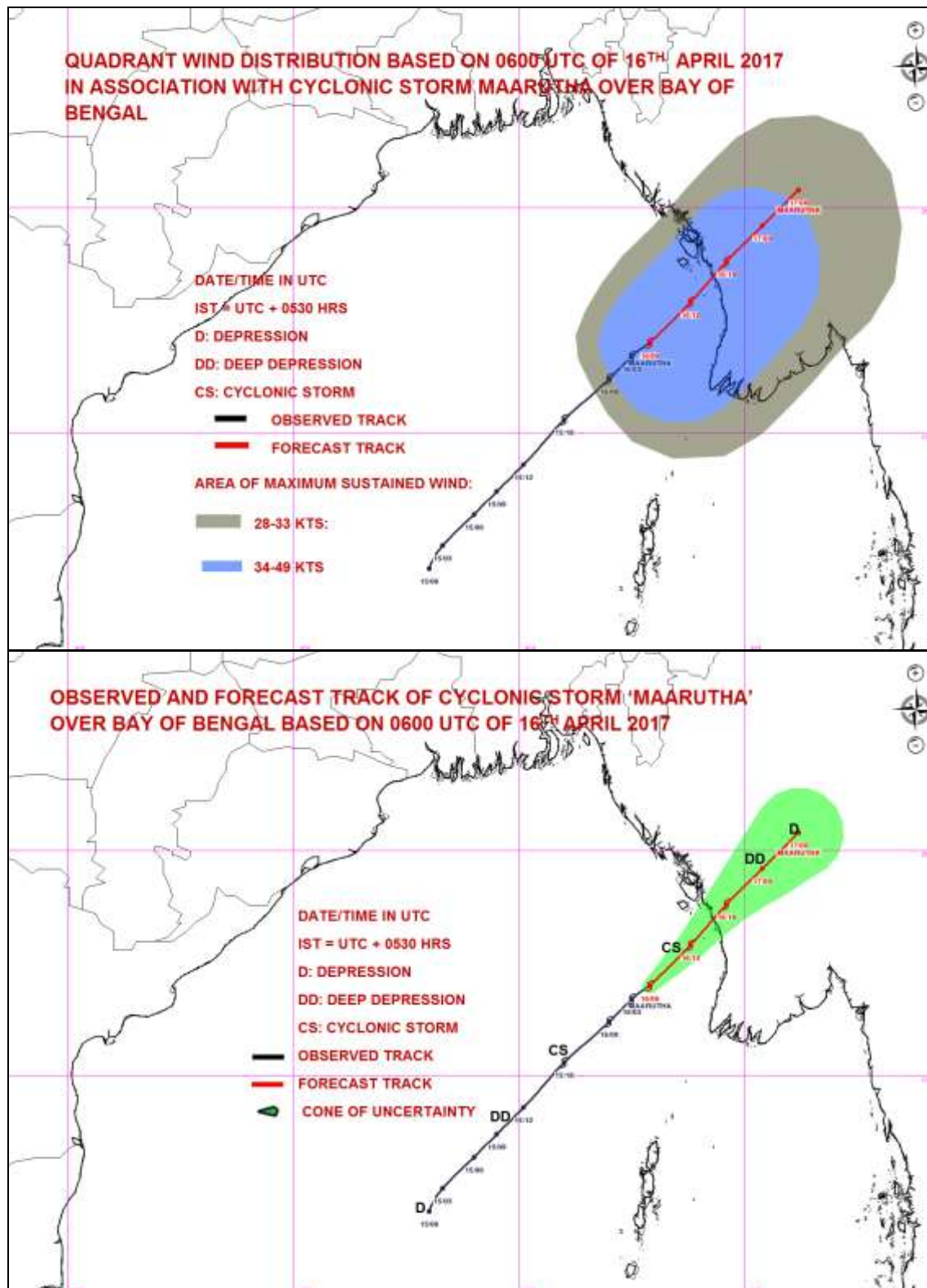
- (i) **Wind warning:** Squally winds speed reaching 40-50 kmph gusting to 60 kmph would prevail over Andaman Islands and adjoining Sea areas during next 12 hours.
- (ii) **Sea condition:** Sea condition would be rough to very rough along & off Andaman Islands during next 12 hours.
- (iii) **Fishermen Warning:** Fishermen are advised not to venture into sea along & off Andaman Islands during next 12 hrs.

The next bulletin will be issued at 2030 hrs IST of 16th April, 2017.

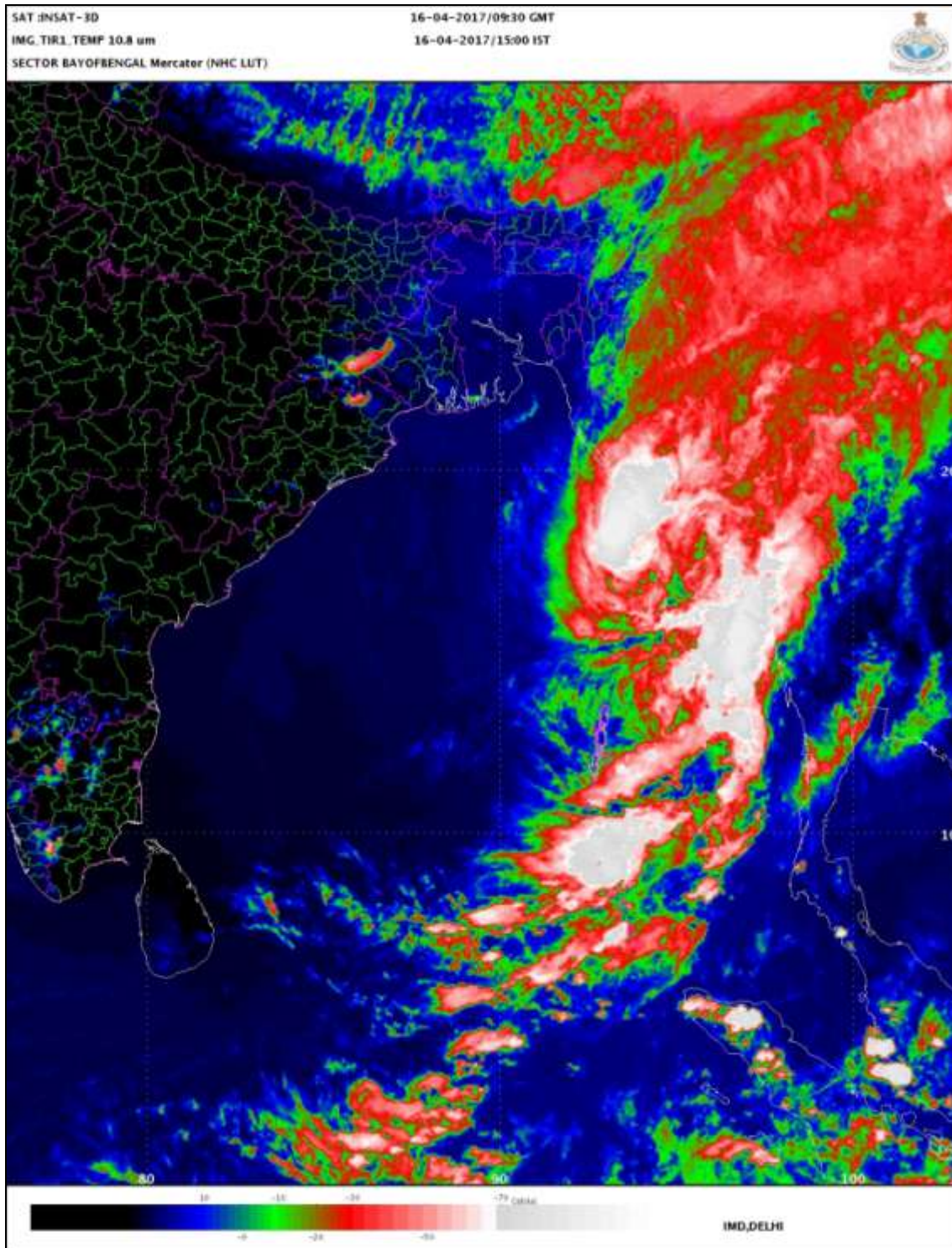
**(Naresh Kumar)
Scientist-D**

Copy to: DFDD, Pune/ACWC Kolkata /ACWC Chennai/CWC Vishakhapatnam/CWC Bhubaneswar/MO port Blair.

Spatial rainfall distribution: Isolated: <25%, A few: 26-50%, Many: 51-75%, Most: 76-100%
Rainfall amount (mm): Heavy rain: 64.5 – 124.4, Very heavy rain: 124.5 – 244.4, Extremely heavy rain: 244.5 or more.



Spatial rainfall distribution: Isolated: <25%, A few: 26-50%, Many: 51-75%, Most: 76-100%
Rainfall amount (mm): Heavy rain: 64.5 – 124.4, Very heavy rain: 124.5 – 244.4, Extremely heavy rain: 244.5 or more.



Spatial rainfall distribution: Isolated: <25%, A few: 26-50%, Many: 51-75%, Most: 76-100%
Rainfall amount (mm): Heavy rain: 64.5 – 124.4, Very heavy rain: 124.5 – 244.4, Extremely heavy rain: 244.5 or more.



**India Meteorological Department
Earth System Science Organisation
(Ministry of Earth Sciences)**

Bulletin No.: 12 (BOB 01/2017)

Time of issue: 2000 hours IST

Dated: 16.04.2017

FROM: INDIA METEOROLOGICAL DEPARTMENT

**To: CONTROL ROOM, NDM, MINISTRY OF HOME AFFAIRS
CONTROL ROOM NDMA
CABINET SECRETARIAT
PS TO HON'BLE MINISTER FOR S & T AND EARTH SCIENCES
SECRETARY, MoES
SECRETARY, DST
H.Q. (INTEGRATED DEFENCE STAFF AND CDS)
DIRECTOR GENERAL, DOORDARSHAN
DIRECTOR GENERAL, AIR
PIB MoES
UNI
D.G. NATIONAL DISASTER RESPONSE FORCE (NDRF)
CHIEF SECRETARY, ANDAMAN & NICOBAR ISLANDS**

Sub: Cyclonic Storm (Maarutha) over eastcentral Bay of Bengal

The cyclonic storm (Maarutha) over eastcentral Bay of Bengal further moved northeastwards with a speed of 19 kmph during past 06 hours and lay centred at 1730 hrs IST of today, the 16th April, 2017 over eastcentral Bay of Bengal near Latitude 17.8° N and Longitude 93.6°E, about 550 km north-northeast of Maya Bandar (Andaman & Nicobar Islands) and 110 km southwest of Sandoway(Thandwe), Myanmar. The system is likely to move northeastwards and cross Myanmar coast near Sandoway(Thandwe) around mid-night of today, the 16th April 2017.

Observed and forecast track positions and intensity of the system are given below:

Date/time(IST)	Position (lat. °N/ long. °E)	Maximum sustained surface wind speed (kmph)	Category of cyclonic Disturbance
16.04.2017/1730	17.8/93.6	70-80 gusting to 90	Cyclonic Storm
16-04-2017/2330	18.8/94.5	60-70 gusting to 80	Cyclonic Storm
17-04-2017/0530	19.6/95.3	50-60 gusting to 70	Deep Depression
17-04-2017/1130	20.4/96.1	35-45 gusting to 55	Depression

Warning:

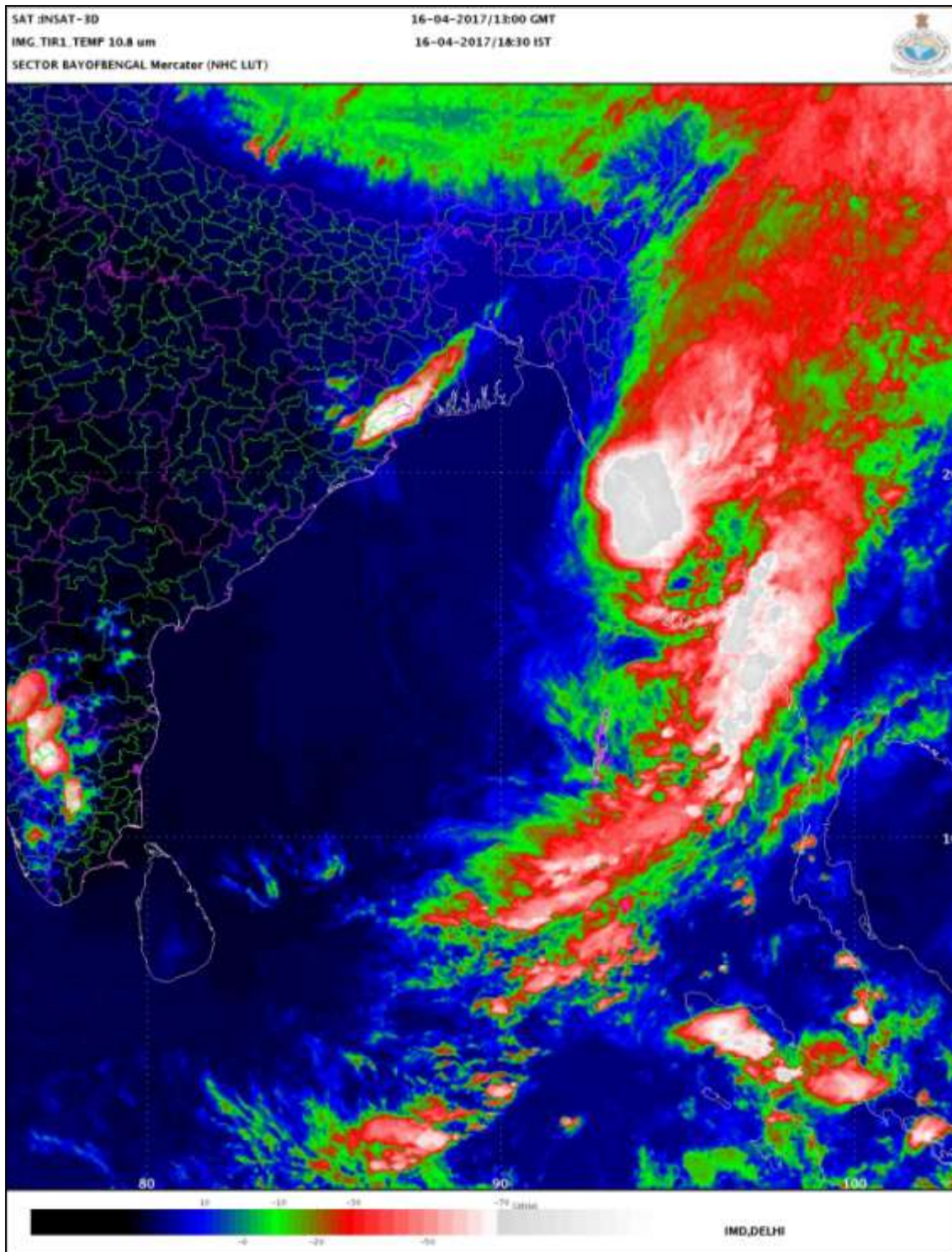
- (i) **Wind warning:** Squally winds speed reaching 40-50 kmph gusting to 60 kmph would prevail over Andaman Islands and adjoining Sea areas during next 12 hours.
- (ii) **Sea condition:** Sea condition would be rough to very rough along & off Andaman Islands during next 12 hours.
- (iii) **Fishermen Warning:** Fishermen are advised not to venture into sea along & off Andaman Islands during next 12 hrs.

The next bulletin will be issued at 2330 hrs IST of 16th April, 2017.

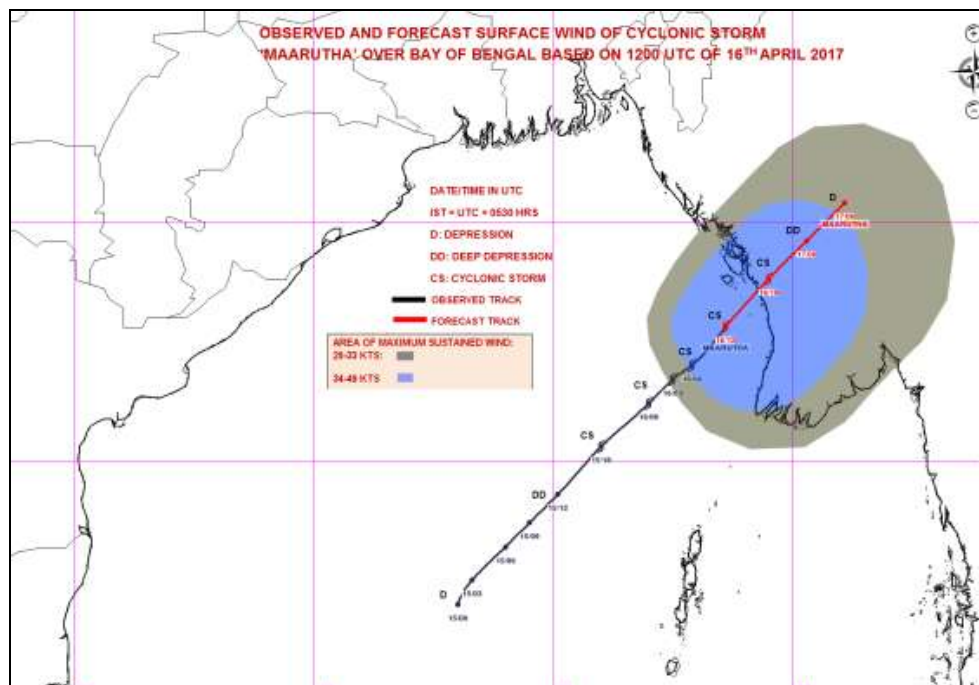
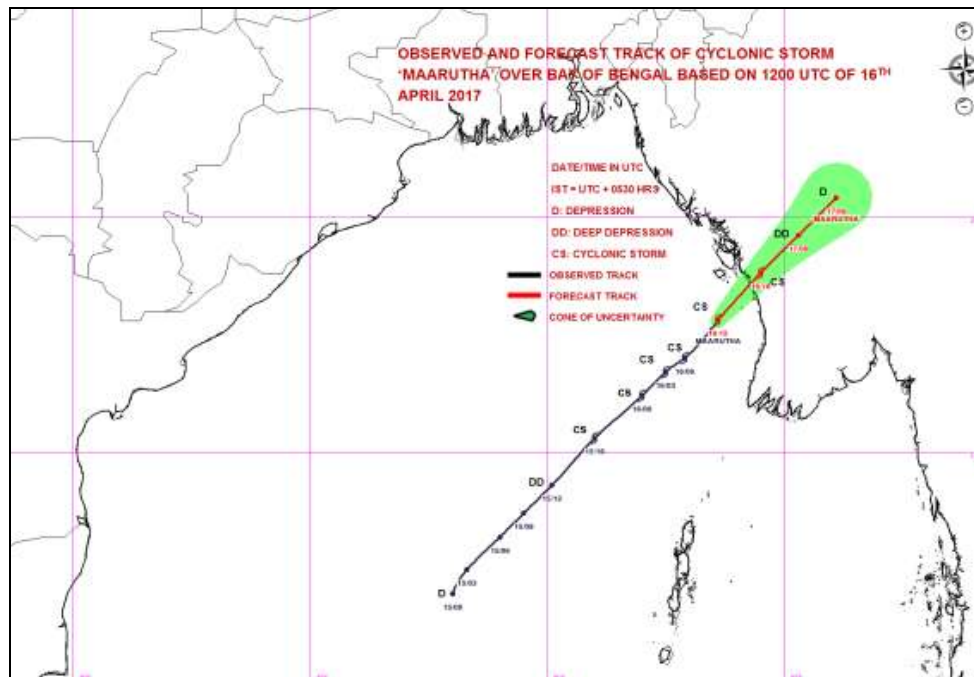
**(Naresh Kumar)
Scientist-D**

Copy to: DFDD, Pune/ACWC Kolkata /ACWC Chennai/CWC Vishakhapatnam/CWC Bhubaneswar/MO port Blair.

Spatial rainfall distribution: Isolated: <25%, A few: 26-50%, Many: 51-75%, Most: 76-100%
Rainfall amount (mm): Heavy rain: 64.5 – 124.4, Very heavy rain: 124.5 – 244.4, Extremely heavy rain: 244.5 or more.



Spatial rainfall distribution: Isolated: <25%, A few: 26-50%, Many: 51-75%, Most: 76-100%
 Rainfall amount (mm): Heavy rain: 64.5 – 124.4, Very heavy rain: 124.5 – 244.4, Extremely heavy rain: 244.5 or more.



Spatial rainfall distribution: Isolated: <25%, A few: 26-50%, Many: 51-75%, Most: 76-100%
Rainfall amount (mm): Heavy rain: 64.5 – 124.4, Very heavy rain: 124.5 – 244.4, Extremely heavy rain: 244.5 or more.



**India Meteorological Department
Earth System Science Organisation
(Ministry of Earth Sciences)**

Bulletin No.: 13 (BOB 01/2017)

Time of issue: 2200 hours IST

Dated: 16.04.2017

FROM: INDIA METEOROLOGICAL DEPARTMENT

**To: CONTROL ROOM, NDM, MINISTRY OF HOME AFFAIRS
CONTROL ROOM NDMA
CABINET SECRETARIAT
PS TO HON'BLE MINISTER FOR S & T AND EARTH SCIENCES
SECRETARY, MoES
SECRETARY, DST
H.Q. (INTEGRATED DEFENCE STAFF AND CDS)
DIRECTOR GENERAL, DOORDARSHAN
DIRECTOR GENERAL, AIR
PIB MoES
UNI
D.G. NATIONAL DISASTER RESPONSE FORCE (NDRF)
CHIEF SECRETARY, ANDAMAN & NICOBAR ISLANDS**

Sub: Cyclonic Storm (Maarutha) over eastcentral Bay of Bengal

The cyclonic storm (Maarutha) over eastcentral Bay of Bengal further moved northeastwards with a speed of 18 kmph during past 06 hours and lay centred at 2030 hrs IST of today, the 16th April, 2017 over eastcentral Bay of Bengal near Latitude 18.2° N and Longitude 93.9°E, about 55 km west-southwest of Sandoway(Thandwe), Myanmar. The system is likely to move north-northeastwards and cross Myanmar coast near Sandoway(Thandwe) during next three hours.

Observed and forecast track positions and intensity of the system are given below:

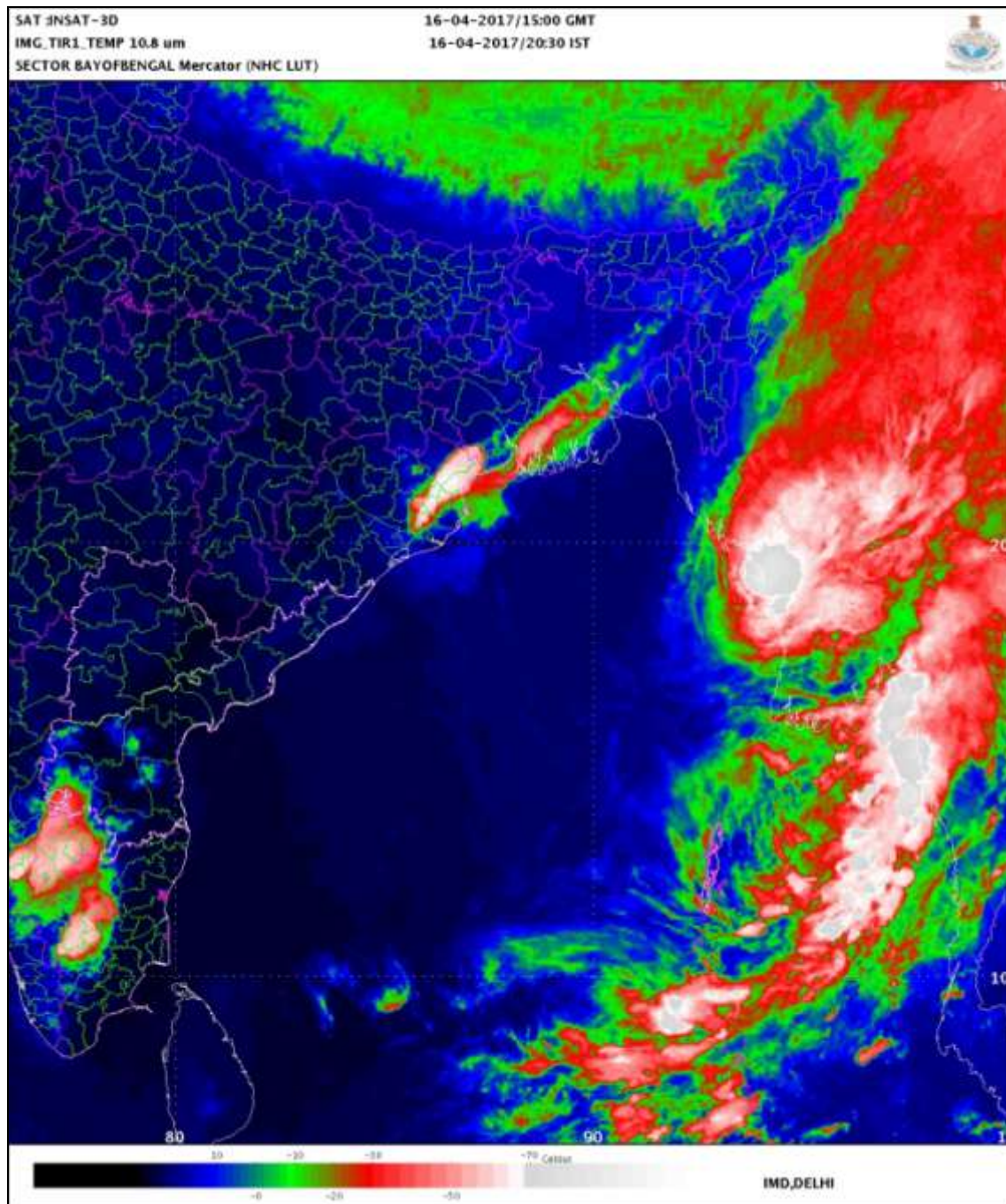
Date/time(IST)	Position (lat. °N/ long. °E)	Maximum sustained surface wind speed (kmph)	Category of cyclonic Disturbance
16.04.2017/2030	18.2/93.9	70-80 gusting to 90	Cyclonic Storm
16-04-2017/2330	18.8/94.5	60-70 gusting to 80	Cyclonic Storm
17-04-2017/0530	19.6/95.3	50-60 gusting to 70	Deep Depression
17-04-2017/1130	20.4/96.1	35-45 gusting to 55	Depression

Warning for Andaman & Nicobar Islands and adjoining sea areas: NIL

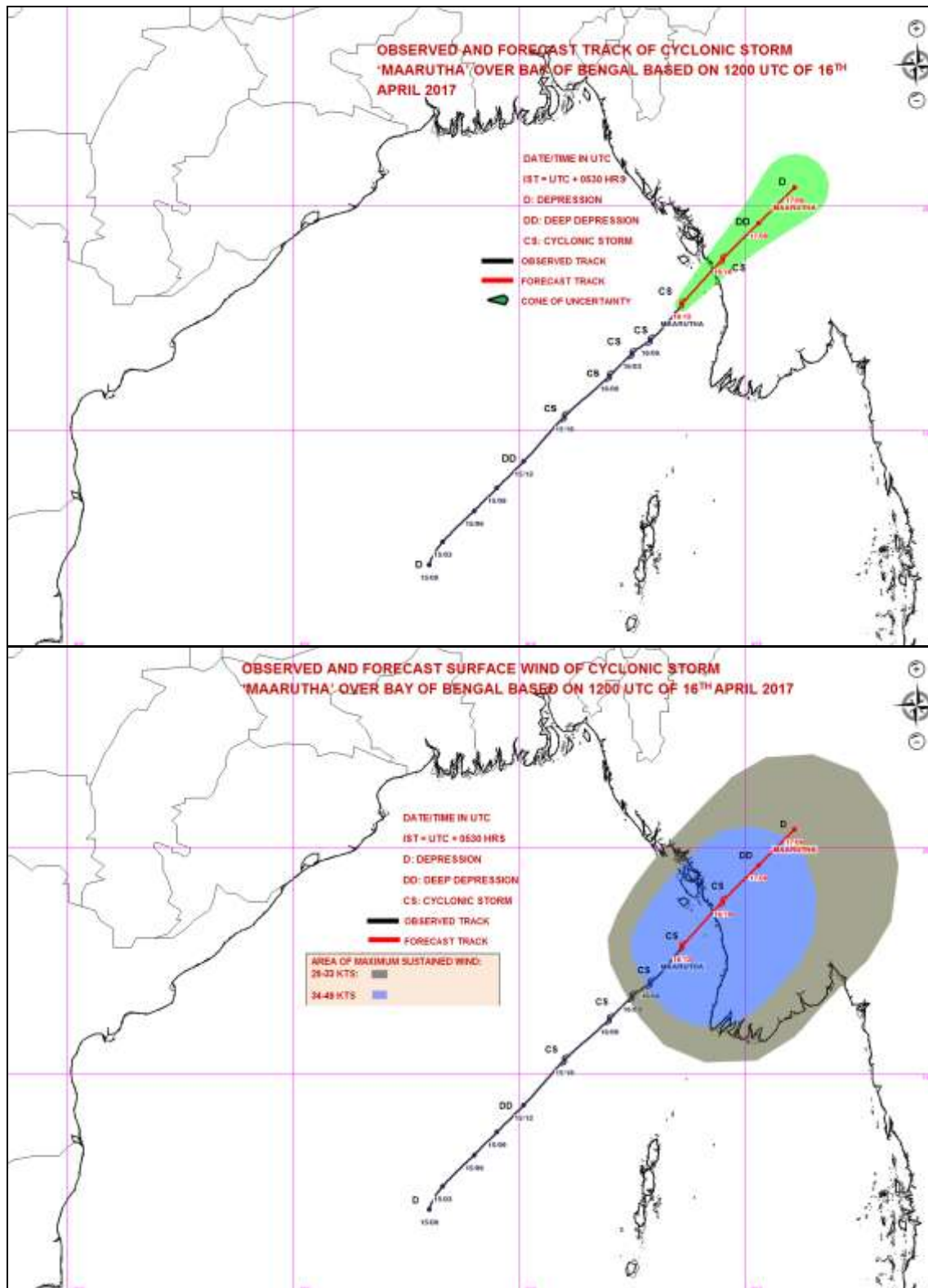
The next bulletin will be issued at 0230 hrs IST of 17th April, 2017.

**(Naresh Kumar)
Scientist-D**

Spatial rainfall distribution: Isolated: <25%, A few: 26-50%, Many: 51-75%, Most: 76-100%
Rainfall amount (mm): Heavy rain: 64.5 – 124.4, Very heavy rain: 124.5 – 244.4, Extremely heavy rain: 244.5 or more.



Spatial rainfall distribution: Isolated: <25%, A few: 26-50%, Many: 51-75%, Most: 76-100%
Rainfall amount (mm): Heavy rain: 64.5 – 124.4, Very heavy rain: 124.5 – 244.4, Extremely heavy rain: 244.5 or more.



Spatial rainfall distribution: Isolated: <25%, A few: 26-50%, Many: 51-75%, Most: 76-100%
Rainfall amount (mm): Heavy rain: 64.5 – 124.4, Very heavy rain: 124.5 – 244.4, Extremely heavy rain: 244.5 or more.



**India Meteorological Department
Earth System Science Organisation
(Ministry of Earth Sciences)**

Bulletin No.: 14 (BOB 01/2017)

Time of issue: 0100 hours IST

Dated: 17.04.2017

FROM: INDIA METEOROLOGICAL DEPARTMENT

**To: CONTROL ROOM, NDM, MINISTRY OF HOME AFFAIRS
CONTROL ROOM NDMA
CABINET SECRETARIAT
PS TO HON'BLE MINISTER FOR S & T AND EARTH SCIENCES
SECRETARY, MoES
SECRETARY, DST
H.Q. (INTEGRATED DEFENCE STAFF AND CDS)
DIRECTOR GENERAL, DOORDARSHAN
DIRECTOR GENERAL, AIR
PIB MoES
UNI
D.G. NATIONAL DISASTER RESPONSE FORCE (NDRF)
CHIEF SECRETARY, ANDAMAN & NICOBAR ISLANDS**

Sub: Cyclonic Storm (Maarutha) is crossing Myanmar coast near Sandoway

The cyclonic storm (Maarutha) over eastcentral Bay of Bengal further moved northeastwards and lay centred at 2330 hrs IST of yesterday, the 16th April, 2017 over eastcentral Bay of Bengal, near Latitude 18.4° N and Longitude 94.3°E, close to Sandoway(Thandwe), Myanmar. Latest observations indicate that the system is crossing the coast near Sandoway(Thandwe). The system is likely to move northeastwards and weaken into a deep depression during next 06 hours.

Observed and forecast track positions and intensity of the system are given below:

Date/time(IST)	Position (lat. °N/ long. °E)	Maximum sustained surface wind speed (kmph)	Category of cyclonic Disturbance
16-04-2017/2330	18.4/94.3	60-70 gusting to 80	Cyclonic Storm
17-04-2017/0530	19.1/95.1	50-60 gusting to 70	Deep Depression
17-04-2017/1130	19.8/95.9	35-45 gusting to 55	Depression

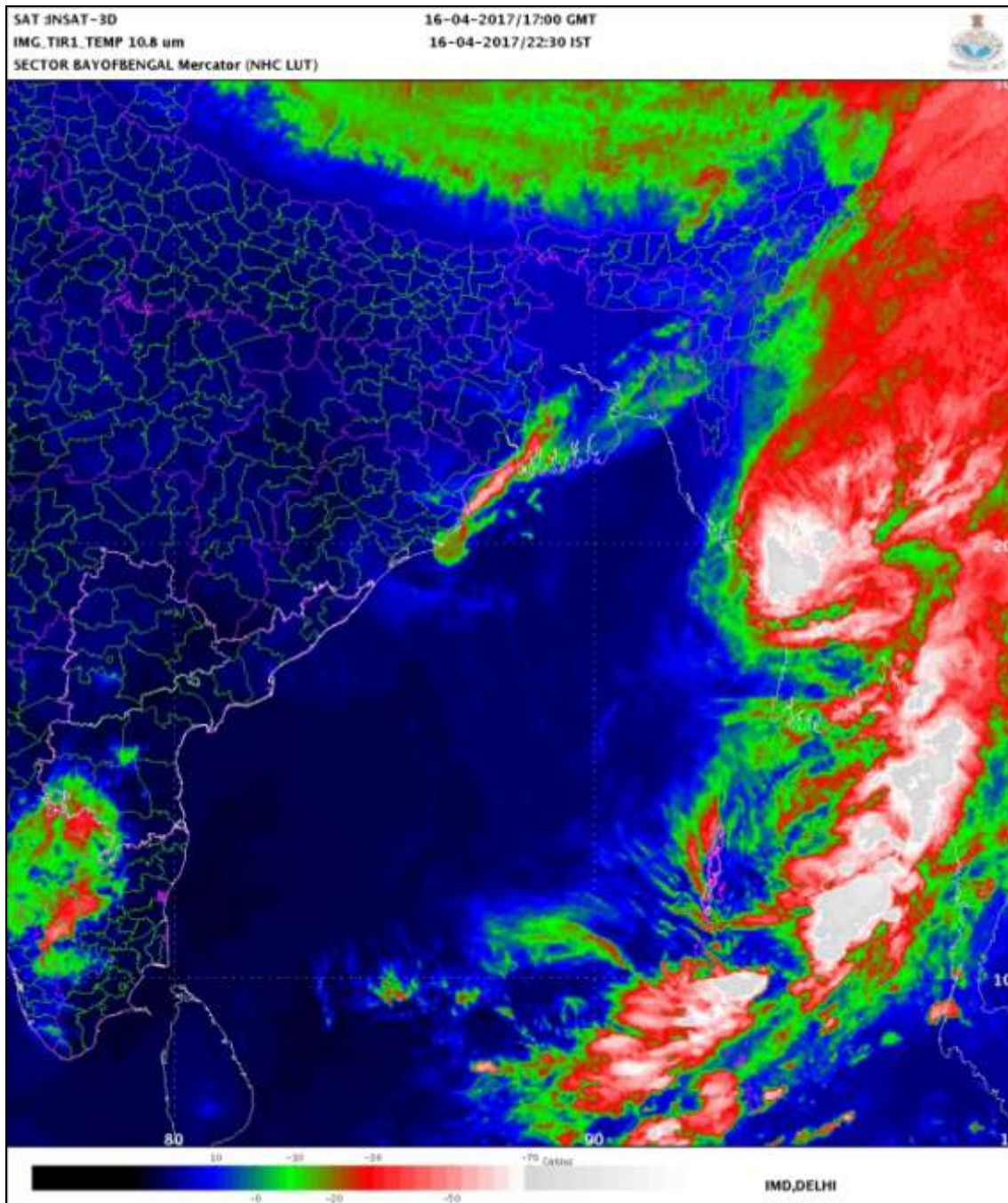
Warning for Andaman & Nicobar Islands and adjoining sea areas: NIL

The next bulletin will be issued at 0230 hrs IST of 17th April, 2017.

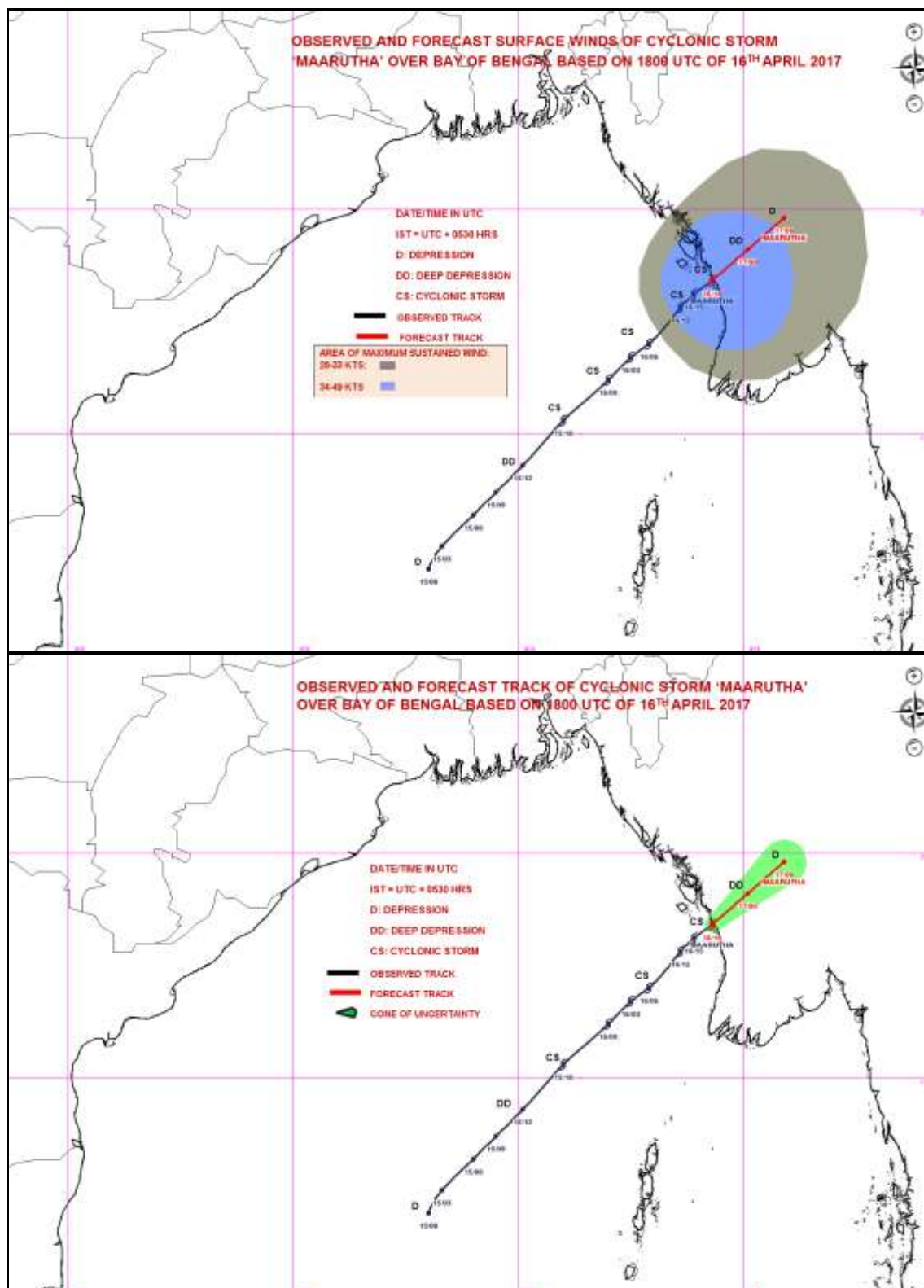
**(Naresh Kumar)
Scientist-D**

Copy to: DFDD, Pune/ACWC Kolkata /ACWC Chennai/CWC Vishakhapatnam/CWC Bhubaneswar/MO port Blair.

Spatial rainfall distribution: Isolated: <25%, A few: 26-50%, Many: 51-75%, Most: 76-100%
Rainfall amount (mm): Heavy rain: 64.5 – 124.4, Very heavy rain: 124.5 – 244.4, Extremely heavy rain: 244.5 or more.



Spatial rainfall distribution: Isolated: <25%, A few: 26-50%, Many: 51-75%, Most: 76-100%
 Rainfall amount (mm): Heavy rain: 64.5 – 124.4, Very heavy rain: 124.5 – 244.4, Extremely heavy rain: 244.5 or more.



Spatial rainfall distribution: Isolated: <25%, A few: 26-50%, Many: 51-75%, Most: 76-100%
 Rainfall amount (mm): Heavy rain: 64.5 – 124.4, Very heavy rain: 124.5 – 244.4, Extremely heavy rain: 244.5 or more.



**India Meteorological Department
Earth System Science Organisation
(Ministry of Earth Sciences)**

Bulletin No.: 15 (BOB 01/2017)

Time of issue: 0315 hours IST

Dated: 17.04.2017

FROM: INDIA METEOROLOGICAL DEPARTMENT

**To: CONTROL ROOM, NDM, MINISTRY OF HOME AFFAIRS
CONTROL ROOM NDMA
CABINET SECRETARIAT
PS TO HON'BLE MINISTER FOR S & T AND EARTH SCIENCES
SECRETARY, MoES
SECRETARY, DST
H.Q. (INTEGRATED DEFENCE STAFF AND CDS)
DIRECTOR GENERAL, DOORDARSHAN
DIRECTOR GENERAL, AIR
PIB MoES
UNI
D.G. NATIONAL DISASTER RESPONSE FORCE (NDRF)
CHIEF SECRETARY, ANDAMAN & NICOBAR ISLANDS**

Sub: Cyclonic Storm (Maarutha) is crossed Myanmar coast near Sandoway

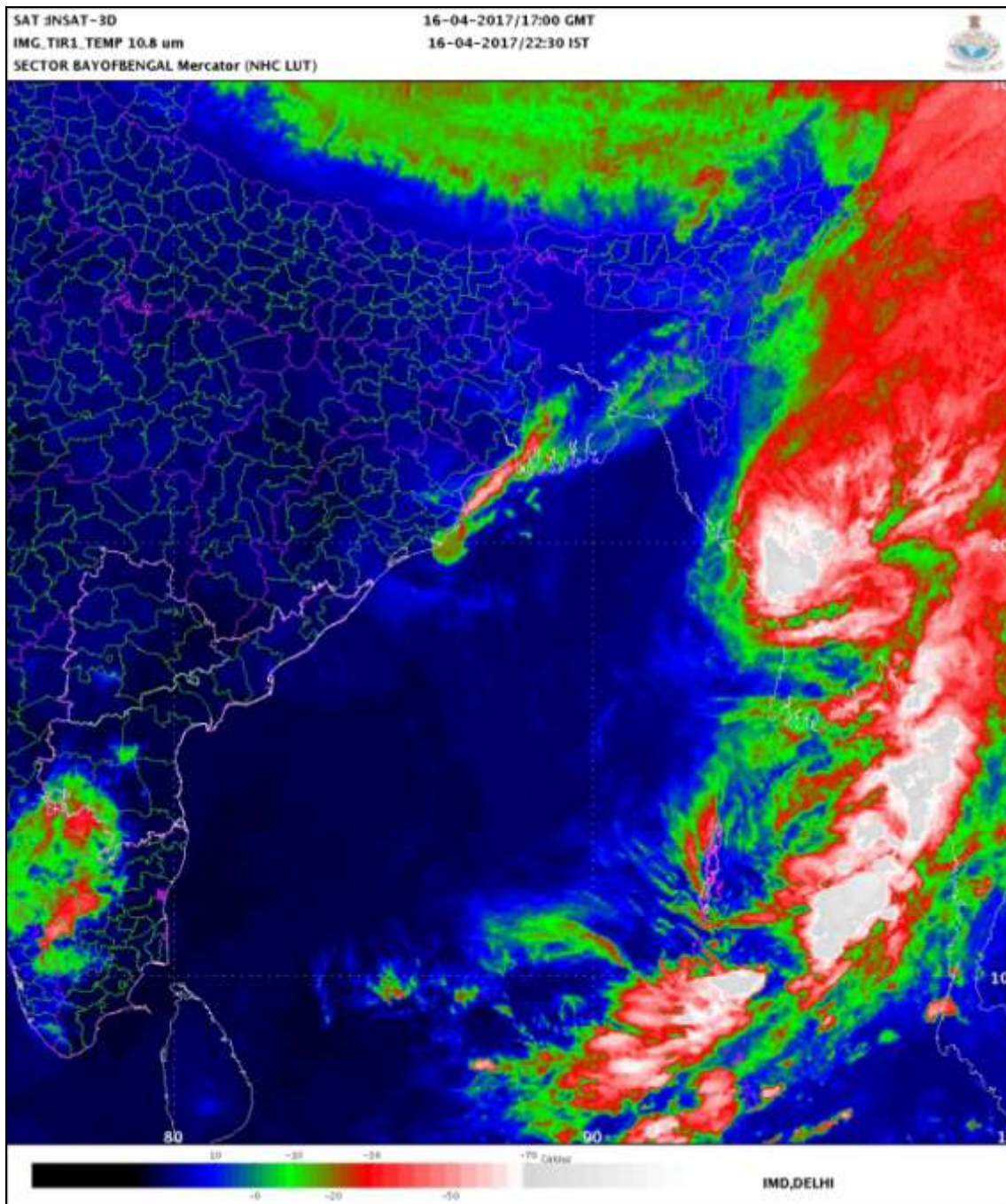
The cyclonic storm (Maarutha) over eastcentral Bay of Bengal further moved northeastwards and crossed Myanmar coast near Sandoway(Thandwe) during 2330 hours IST of yesterday the 16th April, 2017 and 0030 hours of today, the 17th April, 2017. It continue to move northeastwards, weakened into a deep depression and lay centred at 0230 hours IST of today the 17th April, 2017 over Myanmar near Latitude 19.0° N and Longitude 95.0°E, about 90 km northeast of Sandoway(Thandwe), Myanmar. The system is likely to continue to move northeastwards and weaken further into a depression during next 12 hours.

This is last National bulletin for Cyclonic Storm (Maarutha).

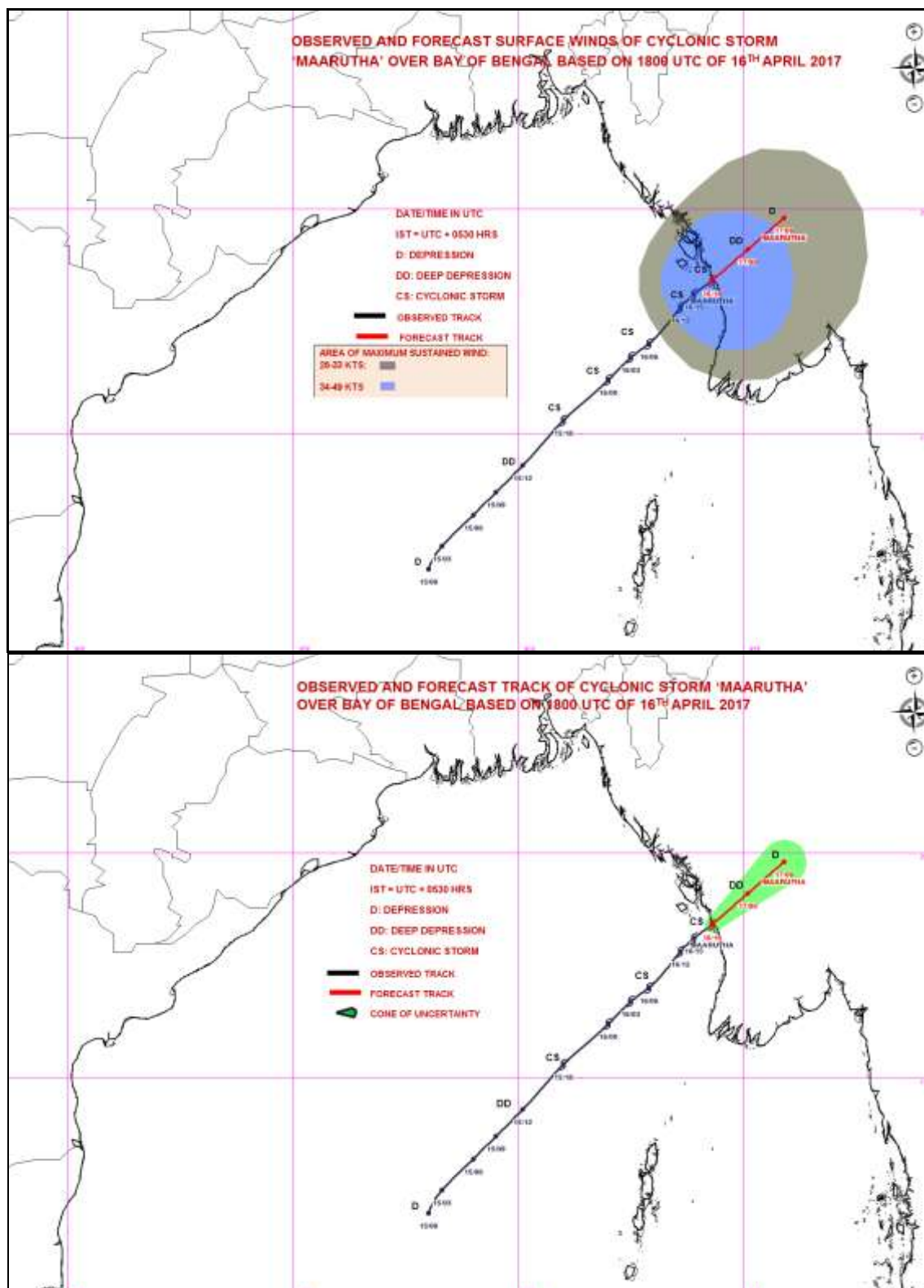
**(Shobhit Katiyar)
Scientist-B**

Copy to: DFDD, Pune/ACWC Kolkata /ACWC Chennai/CWC Vishakhapatnam/CWC Bhubaneswar/MO port Blair.

Spatial rainfall distribution: Isolated: <25%, A few: 26-50%, Many: 51-75%, Most: 76-100%
Rainfall amount (mm): Heavy rain: 64.5 – 124.4, Very heavy rain: 124.5 – 244.4, Extremely heavy rain: 244.5 or more.



Spatial rainfall distribution: Isolated: <25%, A few: 26-50%, Many: 51-75%, Most: 76-100%
Rainfall amount (mm): Heavy rain: 64.5 – 124.4, Very heavy rain: 124.5 – 244.4, Extremely heavy rain: 244.5 or more.



Spatial rainfall distribution: Isolated: <25%, A few: 26-50%, Many: 51-75%, Most: 76-100%
 Rainfall amount (mm): Heavy rain: 64.5 – 124.4, Very heavy rain: 124.5 – 244.4, Extremely heavy rain: 244.5 or more.