



**India Meteorological Department
(Ministry of Earth Sciences)**

National Bulletin No. 11 (BOB/01/2026)

TIME OF ISSUE: 1230 HOURS IST

DATED: 09.01.2026

FROM: INDIA METEOROLOGICAL DEPARTMENT (FAX NO. 24643965/24699216/24623220)

TO: CONTROL ROOM, NDM, MINISTRY OF HOME AFFAIRS (FAX.NO. 23093750)

CONTROL ROOM NDMA (FAX.NO. 26701729)

CABINET SECRETARIAT (FAX.NO.23012284, 23018638)

PS TO HON'BLE MINISTER FOR S & T AND EARTH SCIENCES (FAX NO.23316745)

SECRETARY, MOES (FAX NO. 24629777)

H.Q. (INTEGRATED DEFENCE STAFF AND CDS) (FAX NO. 23005137/23005147)

DIRECTOR GENERAL, DOORDARSHAN (23385843)

DIRECTOR GENERAL, AIR (23421105, 23421219)

PIB MOES (FAX NO. 23389042)

UNI (FAX NO. 23355841)

D.G. NATIONAL DISASTER RESPONSE FORCE (NDRF) (FAX NO. 26105912, 2436 3260)

DIRECTOR, PUNCTUALITY, INDIAN RAILWAYS (FAX NO. 23388503)

CHIEF SECRETARY, TAMIL NADU (FAX NO. 044-25672304)

CHIEF SECRETARY, PUDUCHERRY (FAX NO. 0413-2334145)

CHIEF SECRETARY, ANDAMAN & NICOBAR ISLANDS (FAX NO. 03192-232656)

CHIEF SECRETARY, KERALA (FAX NO. 0471-2327176)

CHIEF SECRETARY, ANDHRA PRADESH (FAX NO. 0863-2441029)

CHIEF SECRETARY, ODISHA (FAX NO. 0674-2536660)

CHIEF SECRETARY, WEST BENGAL (FAX NO. 033-22144328)

Subject: Deep Depression over southwest Bay of Bengal

The deep depression over southwest Bay of Bengal moved nearly northwestwards with a speed of 10 kmph during past 6 hours, and lay centred at 0830 hours IST of today, the 9th January, 2026 over the same region, near latitude 7.4°N and longitude 83.2°E, about 160 km east-northeast of Pottuvil (Sri Lanka), 170 km east-southeast of Batticaloa (Sri Lanka), 250 km east-southeast of Trincomalee (Sri Lanka), 270 km east-northeast of Hambantota (Sri Lanka), 540 km southeast of Karaikal (Puducherry) and 710 km south-southeast of Chennai (Tamil Nadu).

It is very likely to continue to move northwestwards and cross north Sri Lanka coast between Trincomalee and Jaffna around noon/afternoon of 10th January, 2026.

Forecast track and intensity is given in Table below:

Date/Time (IST)	Position (Lat. °N/ long. °E)	Maximum sustained surface wind speed (kmph)	Category of cyclonic disturbance
09.01.26/0830	7.4/83.2	55-65 gusting to 75	Deep Depression
09.01.26/1130	7.7/82.9	55-65 gusting to 75	Deep Depression
09.01.26/1730	8.0/82.5	50-60 gusting to 70	Deep Depression
09.01.26/2330	8.3/82.1	45-55 gusting to 65	Depression
10.01.26/0530	8.8/81.4	40-50 gusting to 60	Depression
10.01.26/1730	9.6/80.3	30-40 gusting to 50	Well marked low pressure area

(i) Rainfall Warning:

- ❖ **Tamilnadu, Puducherry and Karaikal:** Light to moderate rainfall at most places with **heavy to very heavy rainfall** at isolated places is very likely over coastal Tamil Nadu on 9th and 10th January, 2026. Rainfall activity would gradually decrease with light to moderate rainfall at many places and **heavy rainfall** at isolated places is very likely over Tamil Nadu on 11th January, 2026.

(ii) Wind Warning:

(a) Southwest Bay of Bengal and adjoining areas of East Equatorial Indian Ocean:

Squally weather with wind speed reaching 55-65 gusting to 75 kmph is currently prevailing. It would continue to prevail till 9th evening. It would gradually decrease thereafter becoming 40-50 gusting to 60 kmph by 10th morning and 30-40 gusting to 50 kmph by 10th evening.

(b) Southeast Bay of Bengal:

Squally weather with wind speed reaching 40-50 gusting to 60 kmph over adjoining areas of southeast Bay of Bengal till evening of 9th January and gradually decrease thereafter.

(c) Along & off Sri Lanka coast, Gulf of Mannar and adjoining Comorin Area:

Squally weather with wind speed reaching 50-60 gusting to 70 kmph is prevailing over the region. It would gradually decrease becoming 40-50 gusting to 60 kmph by 10th morning.

(d) Along & off Tamilnadu - Puducherry coasts

Squally weather with wind speed reaching 40 – 50 gusting to 60 kmph is very likely to prevail till 10th evening. It would gradually decrease thereafter.

Squally weather with wind speed reaching 35-45 gusting to 55 kmph is very likely to prevail along and off North Tamil Nadu & Puducherry coasts on 9th & 10th January and decrease thereafter.

(iii) Sea Condition:

- ❖ Sea condition is very likely to be rough to very rough over southwest Bay of Bengal & adjoining areas of East Equatorial Indian Ocean, Gulf of Mannar & adjoining Comorin area and along & off Sri Lanka coast on 09th & 10th January and improve gradually thereafter.
- ❖ Sea condition is very likely to be Rough to very rough along & off Tamilnadu-Puducherry coasts on 09th & 10th January and improve gradually thereafter.
- ❖ Sea condition is very likely to be rough to moderate over southeast Bay of Bengal till evening of 9th January and improve gradually thereafter.

(iv) Fishermen Warning:

- ❖ Fishermen are advised not to venture into southwest Bay of Bengal & adjoining East Equatorial Indian Ocean, Gulf of Mannar and adjoining Comorin area and along & off Sri Lanka & Tamilnadu-Puducherry coasts on 09th and 10th.
- ❖ Fishermen are advised not to venture into adjoining areas of southeast Bay of Bengal till 9th January evening.

(v) Impact Expected over south coastal Tamilnadu and Karaikal due to heavy rainfall

- ❖ Localized Flooding of roads, water logging in low lying areas and closure of underpasses mainly in urban areas of the above region.
- ❖ Occasional reduction in visibility due to heavy rainfall.
- ❖ Disruption of traffic in city areas and roadways due to water logging in roads and poor visibility due to heavy rain leading to increased travel time and incidents

- ❖ Likely disruption of marine and inland water transportation like small boats and trawlers.
- ❖ Damage to horticulture and standing crops in some areas due to inundation and wind.

(vi) Action Suggested for coastal Tamilnadu-Puducherry and Karaikal

- Judicious regulation of onshore/offshore, Port and maritime activities
- Judicious regulation of tourism activities in coastal areas.
- Judicious regulation of surface transports including railways and roadways.
- Avoid going to areas that face the water logging problems often.

Next bulletin will be issued at 1430 hours IST of today, the 9th January, 2026.

(Monica Sharma)
Scientist-E, IMD, New Delhi

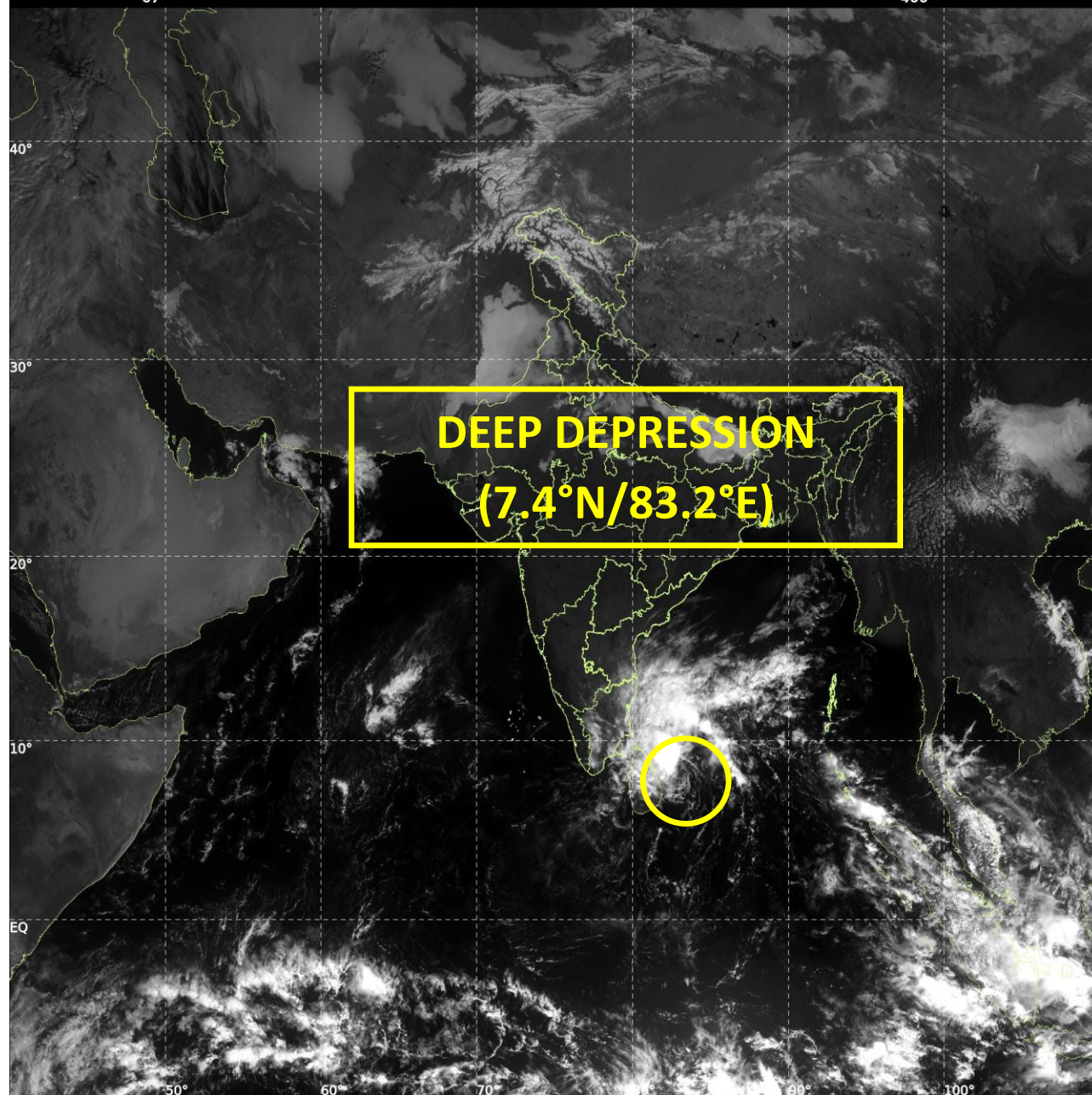
*Copy to: ACWC Kolkata/ACWC Chennai/CWC Bhubaneswar/CWC Vishakhapatnam/CWC Thiruvananthapuram/
Meteorological Centre Vijaya Puram/*



INSAT-3DS IMG, Visible Count @ 0.65 μm
GMT:09-01-2026/(0600-0627) IST:09-01-2026/(1130-1157)
L1C MERCATOR (LINEAR STRETCH: 0.5%)

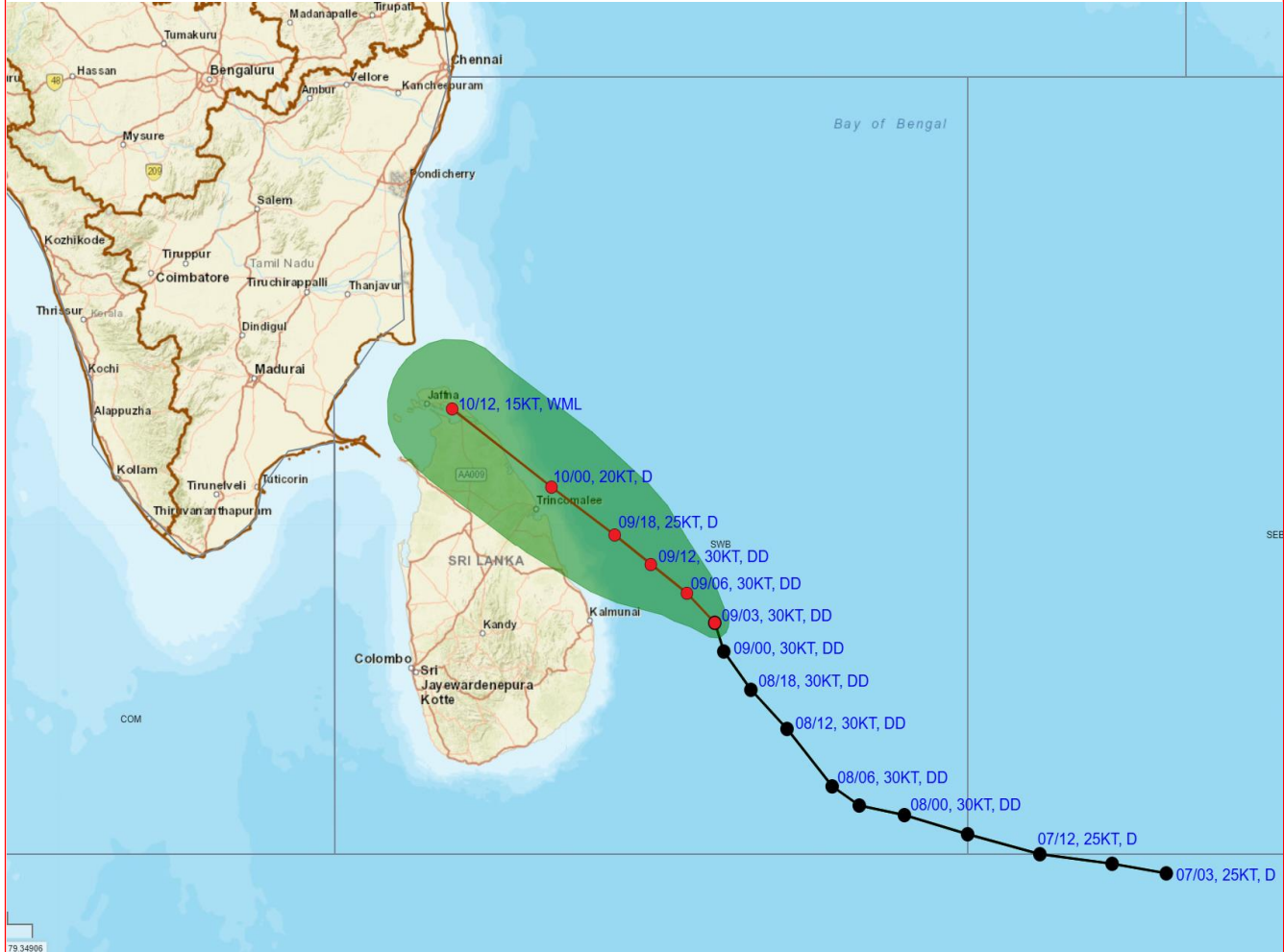
67

400





OBSERVED AND FORECAST TRACK ALONGWITH CONE OF UNCERTAINTY OF DEEP DEPRESSION OVER SOUTHWEST BAY OF BENGAL BASED ON 0300 UTC (0830 Hrs. IST) OF 9TH JANUARY 2026.



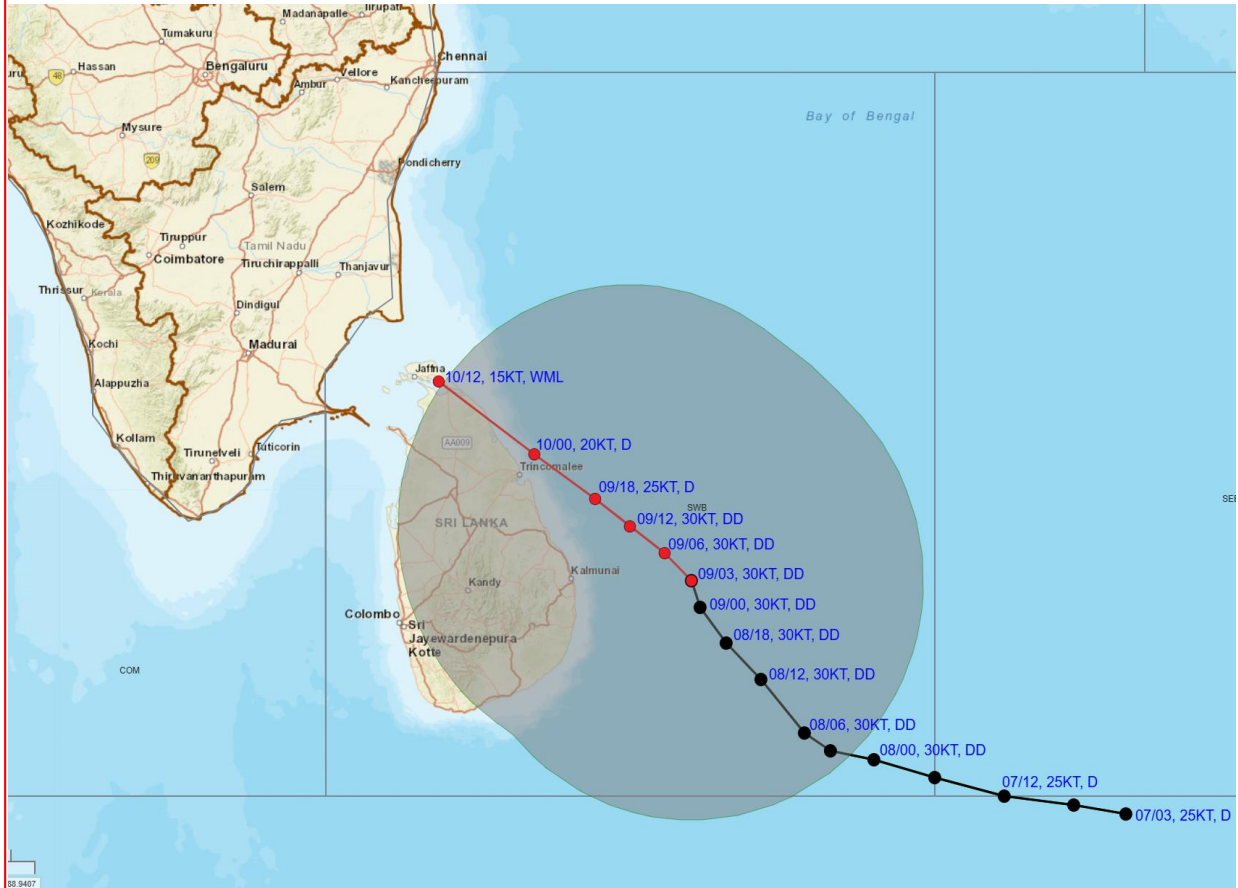
DATE/TIME IN UTC
IST=UTC + 0530
L: LOW PRESSURE AREA
WML: WELL MARKED LOW PRESSURE AREA
D: DEPRESSION (17-27 KT)
DD: DEEP DEPRESSION (28-33 KT)
CS: CYCLONIC STORM (34-47 KT)
SCS: SEVERE CYCLONIC STORM (48-63 KT)
VSCS: VERY SEVERE CYCLONIC STORM (64-89 KT)
ESCS: EXTREMELY SEVERE CYCLONIC STORM (90-119 KT)
SuCS: SUPER CYCLONIC STORM (≥ 120 KT)

- LESS THAN 34 KT
- 34-47 KT
- ≥ 48 KT
- OBSERVED TRACK
- FORECAST TRACK
- CONE OF UNCERTAINTY

Forecast distance (km) and direction of the centre from nearest 5 coastal stations								
Forecast Date and Time	Lead Period	Lat	Lon	Station 1	Station 2	Station 3	Station 4	Station 5
09.01.26/0300	0	7.4	83.2	POTTUVIL (162,E)	BATTICALOA (169,E)	BADULLA (242,E)	TRINCOMALEE (252,E)	BANDARAWELA (253,E)
09.01.26/0600	3	7.7	82.9	BATTICALOA (132,E)	POTTUVIL (149,NE)	TRINCOMALEE (207,E)	BADULLA (219,E)	BANDARAWELA (233,E)
09.01.26/1200	9	8.0	82.5	BATTICALOA (94,E)	POTTUVIL (144,NNE)	TRINCOMALEE (152,E)	BADULLA (196,NE)	BANDARAWELA (212,NE)



OBSERVED AND FORECAST TRACK ALONGWITH QUADRANT WIND DISTRIBUTION OF DEEP DEPRESSION OVER SOUTHWEST BAY OF BENGAL BASED ON 0300 UTC (0830 Hrs. IST) OF 9TH JANUARY 2026.



DATE/TIME IN UTC

IST=UTC + 0530

L: LOW PRESSURE AREA

WML: WELL MARKED LOW PRESSURE AREA

D: DEPRESSION (17-27 KT)

DD: DEEP DEPRESSION (28-33 KT)

CS: CYCLONIC STORM (34-47 KT)

SCS: SEVERE CYCLONIC STORM (48-63KT)

VSCS: VERY SEVERE CYCLONIC STORM (64-89 KT)

ESCS: EXTREMELY SEVERE CYCLONIC STORM (90-119 KT)

SuCS: SUPER CYCLONIC STORM (≥ 120 KT)

● LESS THAN 34 KT

○ 34-47 KT

● ≥ 48 KT

— OBSERVED TRACK

— FORECAST TRACK

▲ CONE OF UNCERTAINTY

AREA OF MAXIMUM SUSTAINED WIND SPEED:

■ 28-33 KT (52-61 KMPH)

■ 34-49 KT (62-91 KMPH)

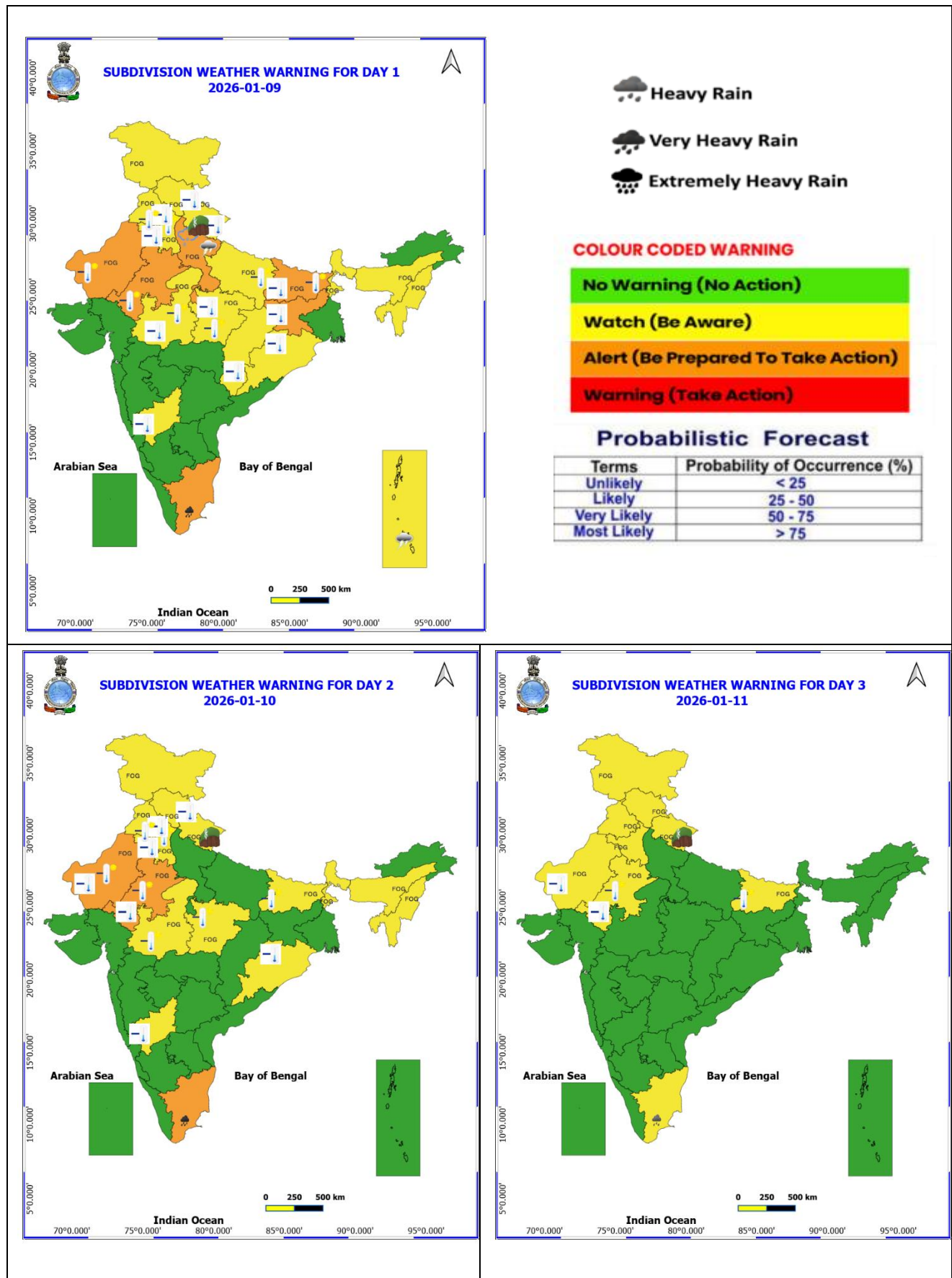
■ 50-63 KT (92-117 KMPH)

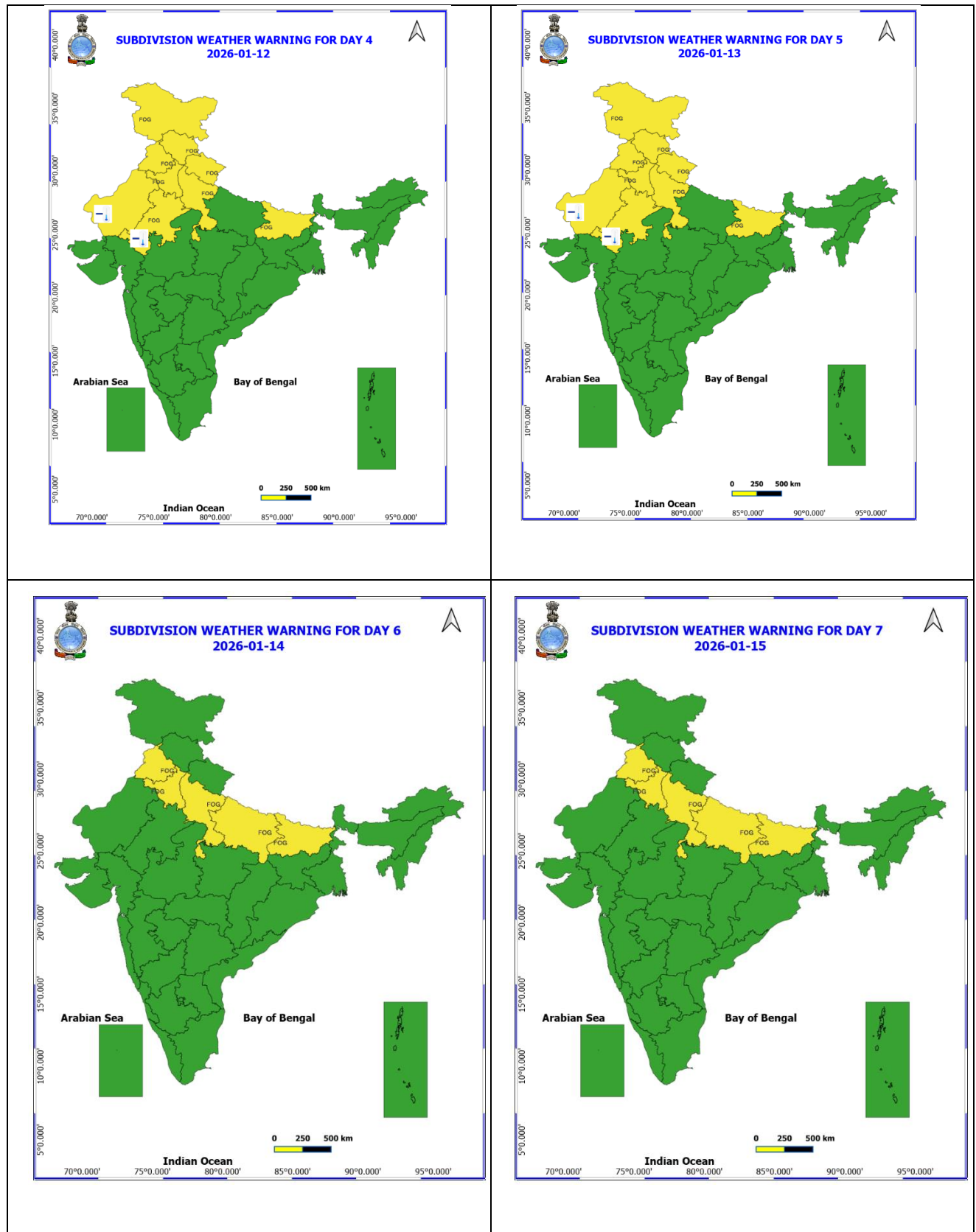
■ ≥ 64 KT (≥ 118 KMPH)

IMPACT OVER THE SEA

MSW (knot/kmph)	Impact	Action
28-33 (52-61)	Very rough seas	Total suspension of fishing operations
34-49 (62-91)	High to very high seas	Total suspension of fishing operations
50-63 (92-117)	Very high seas	Total suspension of fishing operations
≥ 64 (≥ 118)	Phenomenal	Total suspension of fishing operations

WARNING GRAPHICS

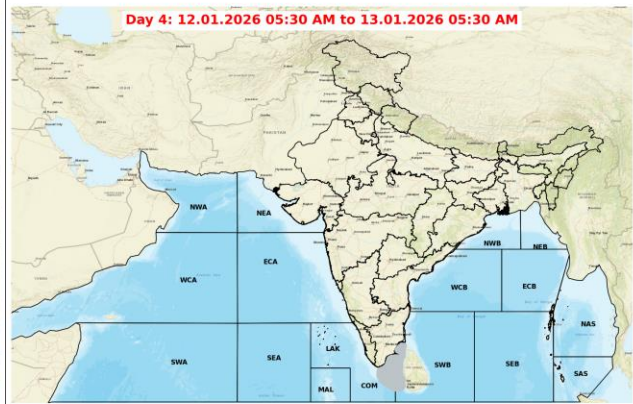
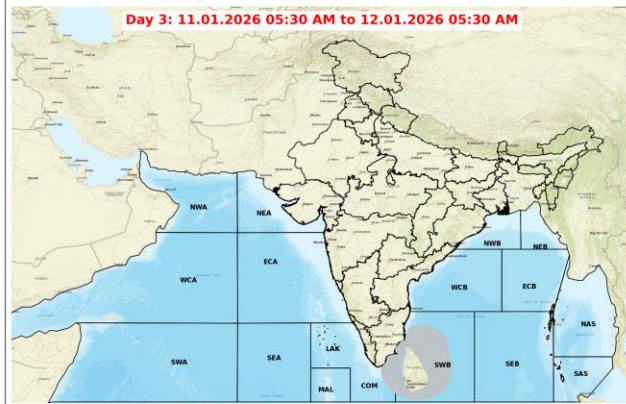
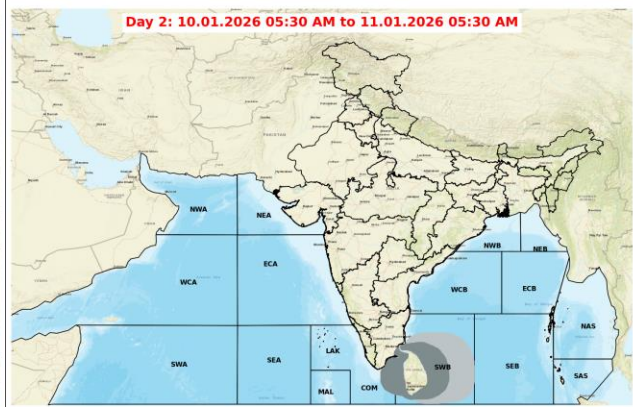
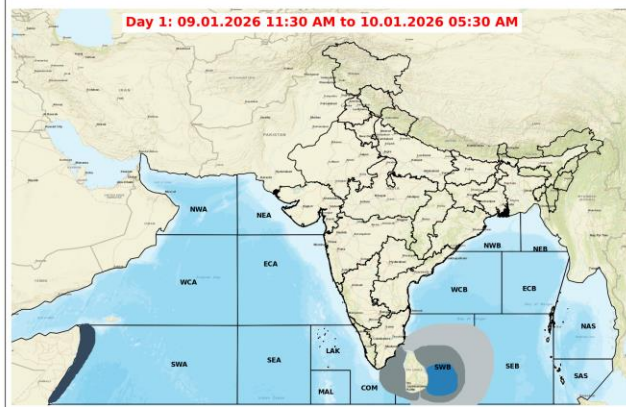




Action may be taken based on ORANGE AND RED COLOUR warnings.

- Vulnerable regions likely urban and hilly areas action may be initiated for heavy rainfall warning.
- As the lead period increases forecast accuracy decreases.

Fishermen Warning Graphics



Legend

- | | |
|---|---|
| Squally Weather with wind speed 35-45 kmph gusting to 55 kmph | Squally wind with speed 55-65 kmph gusting to 75 kmph |
| Squally Weather with wind speed 40-50 kmph gusting to 60 kmph | CS with Gale winds with speed 60-80 kmph gusting to 90 kmph |
| Squally Weather with wind speed 45-55 kmph gusting to 65 kmph | SCS with Gale wind speed 90-110 kmph gusting to 120 kmph |
| Squally wind with speed 45-55 kmph gusting to 65 kmph | VSCS with Gale wind speed 120-165 kmph gusting to 185 kmph |
| Squally wind with speed 50-60 kmph gusting to 70 kmph | ESCS with Gale wind speed 165-220 kmph gusting to 245 kmph |

Fishermen are advised not to venture into the marked areas.