



**India Meteorological Department
(Ministry of Earth Sciences)**

National Bulletin No. 15 (BOB/01/2026)

TIME OF ISSUE: 0930 HOURS IST

DATED: 10.01.2026

FROM: INDIA METEOROLOGICAL DEPARTMENT (FAX NO. 24643965/24699216/24623220)

TO: CONTROL ROOM, NDM, MINISTRY OF HOME AFFAIRS (FAX.NO. 23093750)

CONTROL ROOM NDMA (FAX.NO. 26701729)

CABINET SECRETARIAT (FAX.NO.23012284, 23018638)

PS TO HON'BLE MINISTER FOR S & T AND EARTH SCIENCES (FAX NO.23316745)

SECRETARY, MOES (FAX NO. 24629777)

H.Q. (INTEGRATED DEFENCE STAFF AND CDS) (FAX NO. 23005137/23005147)

DIRECTOR GENERAL, DOORDARSHAN (23385843)

DIRECTOR GENERAL, AIR (23421105, 23421219)

PIB MOES (FAX NO. 23389042)

UNI (FAX NO. 23355841)

D.G. NATIONAL DISASTER RESPONSE FORCE (NDRF) (FAX NO. 26105912, 2436 3260)

DIRECTOR, PUNCTUALITY, INDIAN RAILWAYS (FAX NO. 23388503)

CHIEF SECRETARY, TAMIL NADU (FAX NO. 044-25672304)

CHIEF SECRETARY, PUDUCHERRY (FAX NO. 0413-2334145)

CHIEF SECRETARY, ANDAMAN & NICOBAR ISLANDS (FAX NO. 03192-232656)

CHIEF SECRETARY, KERALA (FAX NO. 0471-2327176)

CHIEF SECRETARY, ANDHRA PRADESH (FAX NO. 0863-2441029)

CHIEF SECRETARY, ODISHA (FAX NO. 0674-2536660)

CHIEF SECRETARY, WEST BENGAL (FAX NO. 033-22144328)

Subject: Deep Depression weakened into a Depression over southwest Bay of Bengal off northeast Sri Lanka coast

The deep depression over southwest Bay of Bengal moved west-northwestwards with a speed of 12 kmph during past 6 hours, **weakened into a Depression** and lay centred at 0530 hours IST of today, the 10th January, 2026, over southwest Bay of Bengal off northeast Sri Lanka coast near latitude 8.8°N and longitude 81.6°E, about 50 km east-northeast of Trincomalee (Sri Lanka), 120 km north of Batticaloa (Sri Lanka), 210 km north of Pottuvil (Sri Lanka), 310 km southeast of Karaikal (Puducherry) and 490 km south-southeast of Chennai (Tamil Nadu).

It is likely to continue to move west-northwestwards and cross north Sri Lanka coast between Trincomalee and Jaffna as a depression around noon/afternoon of today, 10th January, 2026.

Forecast track and intensity is given in Table below:

Date/Time (IST)	Position (Lat. °N/ long. °E)	Maximum sustained surface wind speed (kmph)	Category of cyclonic disturbance
10.01.26/0530	8.8/81.6	45-55 gusting to 65	Depression
10.01.26/1130	9.1/81.0	40-50 gusting to 60	Depression
10.01.26/1730	9.2/80.5	35-45 gusting to 55	Depression
10.01.26/2330	9.1/80.1	25-35 gusting to 45	Well Marked Low Pressure Area

(i) Rainfall Warning:

Tamilnadu, Puducherry and Karaikal: Light to moderate rainfall at most places with **heavy to very heavy rainfall** at isolated places is very likely over coastal Tamil Nadu on 10th January, 2026. Rainfall activity would gradually decrease with light to moderate rainfall at many places and **heavy rainfall** at isolated places is very likely over Tamil Nadu on 11th January, 2026.

(ii) Wind Warning:

(a) Southwest Bay of Bengal and along & off Sri Lanka coast, Gulf of Mannar and adjoining Comorin Area:

Squally weather with wind speed reaching 45-55 gusting to 65 kmph is currently prevailing over the region. It would gradually decrease becoming 40-50 gusting to 60 kmph by 10th afternoon and 25-35 gusting to 45 kmph by 10th midnight.

(b) Along & off Tamilnadu-Puducherry coasts

Squally weather with wind speed reaching 40-50 gusting to 60 kmph is very likely to prevail till 10th afternoon. It would gradually decrease thereafter.

Squally weather with wind speed reaching 35-45 gusting to 55 kmph is very likely to prevail along and off North Tamil Nadu & Puducherry coasts on 10th January and decrease thereafter.

(iii) Sea Condition:

- ❖ Sea condition is very likely to be rough over southwest Bay of Bengal, Gulf of Mannar & adjoining Comorin area and along & off Sri Lanka coast on 10th January and improve gradually thereafter.
- ❖ Sea condition is very likely to be rough along & off Tamilnadu-Puducherry coasts on 10th January and improve gradually thereafter.

(iv) Fishermen Warning:

Fishermen are advised not to venture into southwest Bay of Bengal, Gulf of Mannar and adjoining Comorin area and along & off Sri Lanka & Tamilnadu-Puducherry coasts on 10th January.

(v) Impact Expected over south coastal Tamilnadu and Karaikal due to heavy rainfall

- ❖ Localized Flooding of roads, water logging in low lying areas and closure of underpasses mainly in urban areas of the above region.
- ❖ Occasional reduction in visibility due to heavy rainfall.
- ❖ Disruption of traffic in city areas and roadways due to water logging in roads and poor visibility due to heavy rain leading to increased travel time and incidents
- ❖ Likely disruption of marine and inland water transportation like small boats and trawlers.
- ❖ Damage to horticulture and standing crops in some areas due to inundation and wind.

(vi) Action Suggested for coastal Tamilnadu-Puducherry and Karaikal

- Judicious regulation of onshore/offshore, Port and maritime activities
- Judicious regulation of tourism activities in coastal areas.
- Judicious regulation of surface transports including railways and roadways.
- Avoid going to areas that face the water logging problems often.

Next bulletin will be issued at 1130 hours IST of today, the 10th January, 2026.

(Monica Sharma)
Scientist-E, IMD, New Delhi

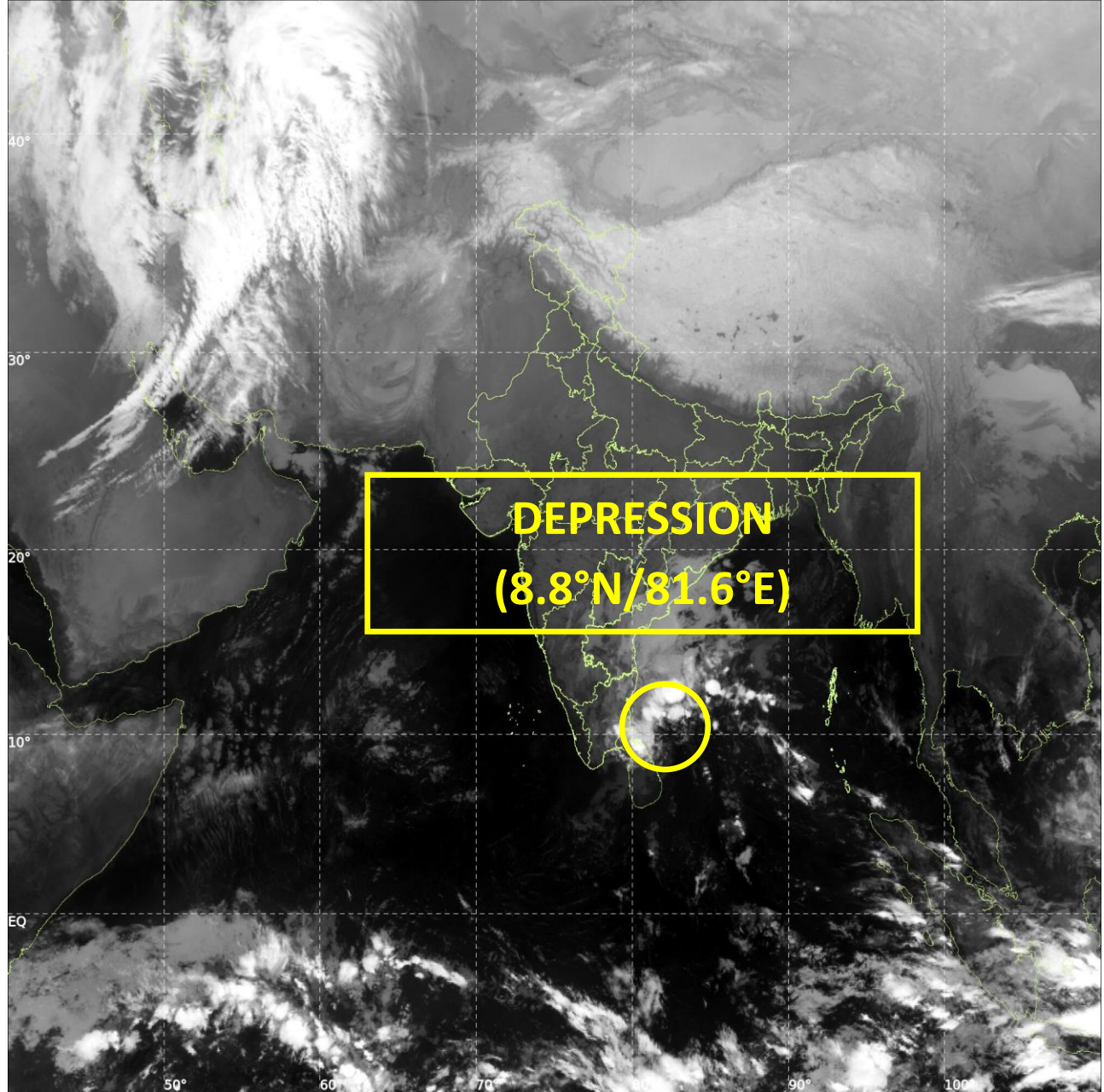
*Copy to: ACWC Kolkata/ACWC Chennai/CWC Bhubaneswar/CWC Vishakhapatnam/CWC Thiruvananthapuram/
Meteorological Centre Vijaya Puram/*



INSAT-3DS IMG, Thermal Infrared1 Count @ 10.83 μm
GMT:10-01-2026/(0130-0157) IST:10-01-2026/(0700-0727)
L1C MERCATOR (LINEAR STRETCH: 1%)

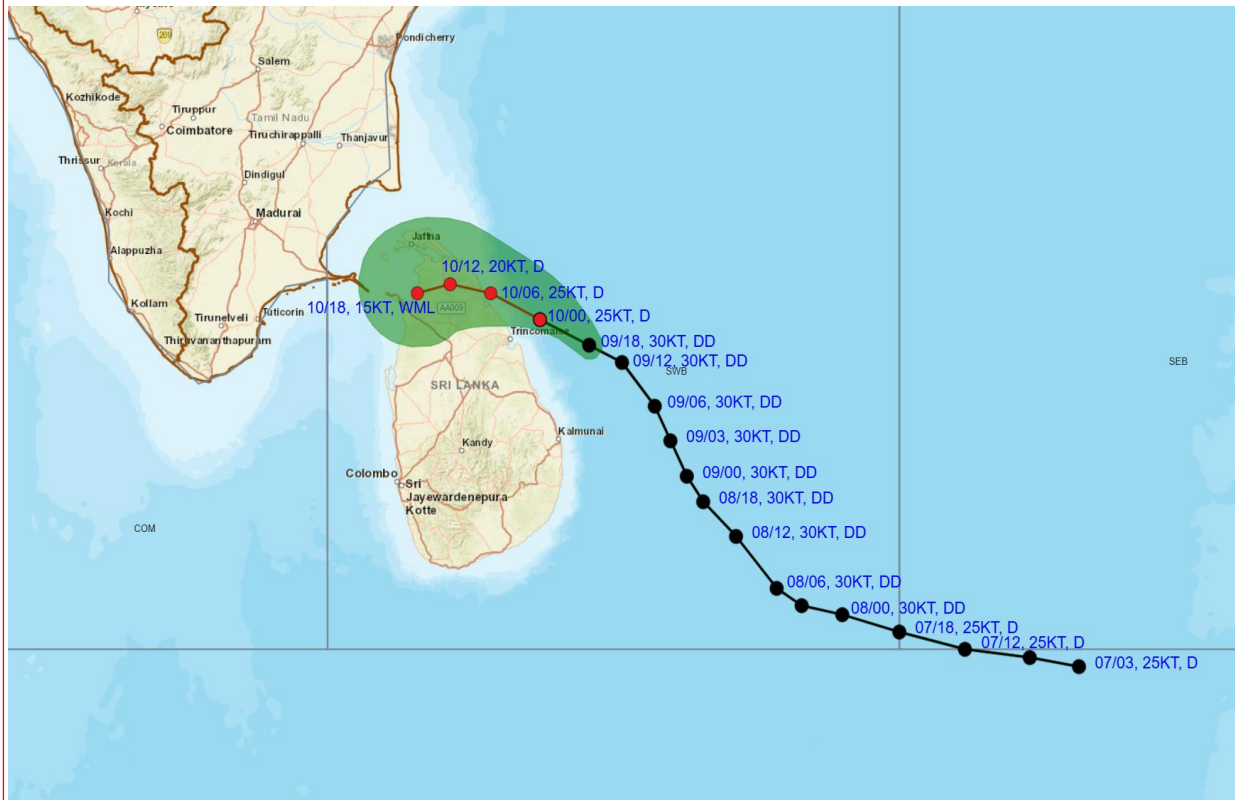
500

898





OBSERVED AND FORECAST TRACK ALONGWITH CONE OF UNCERTAINTY OF DEPRESSION OVER SOUTHWEST BAY OF BENGAL OFF NORTHEAST SRI-LANKA COAST BASED ON 0000 UTC (0530 Hrs. IST) OF 10TH JANUARY 2026.



DATE/TIME IN UTC

IST=UTC + 0530

L: LOW PRESSURE AREA

WML: WELL MARKED LOW PRESSURE AREA

D: DEPRESSION (17-27 KT)

DD: DEEP DEPRESSION (28-33 KT)

CS: CYCLONIC STORM (34-47 KT)

SCS: SEVERE CYCLONIC STORM (48-63KT)

VSCS: VERY SEVERE CYCLONIC STORM (64-89 KT)

ESCS: EXTREMELY SEVERE CYCLONIC STORM (90-119 KT)

SuCS: SUPER CYCLONIC STORM (≥ 120 KT)

LESS THAN 34 KT

34-47 KT

≥ 48 KT

OBSERVED TRACK

FORECAST TRACK

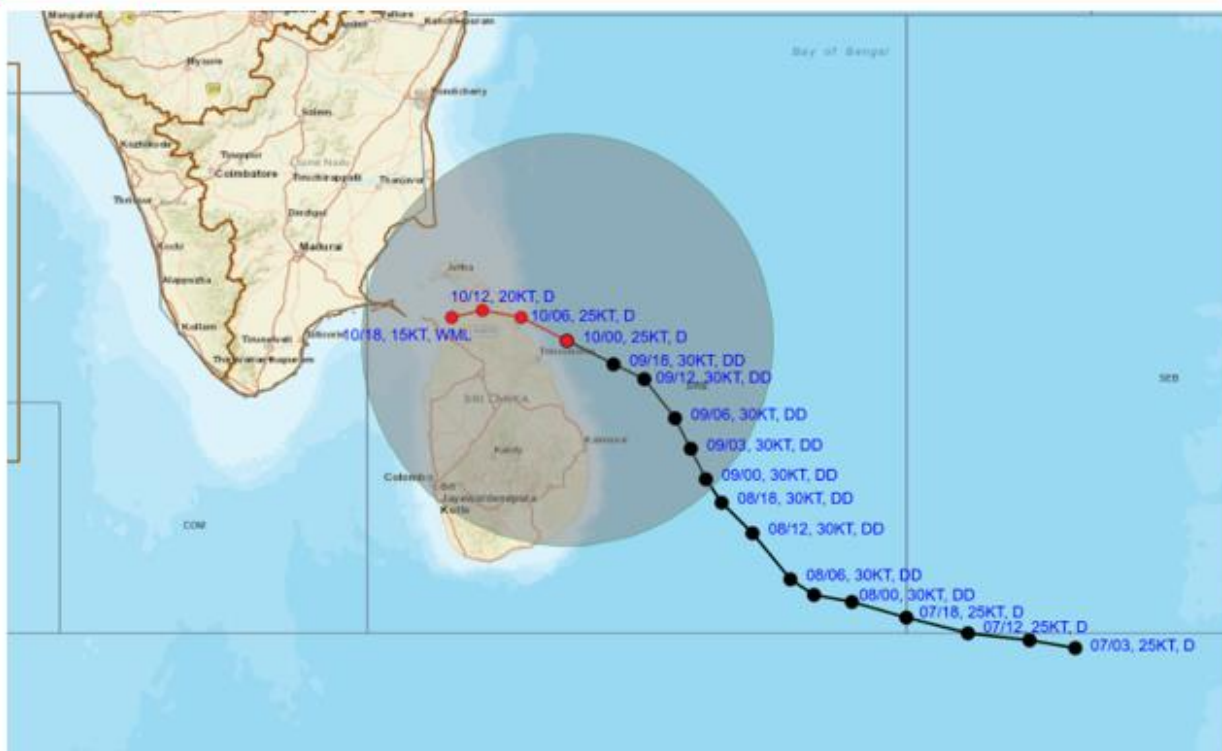
CONE OF UNCERTAINTY

Forecast distance (km) and direction of the centre from nearest 5 coastal stations

Forecast Date and Time	Lead Period	Lat	Lon	Station 1	Station 2	Station 3	Station 4	Station 5
10.01.26/0000	0	8.8	81.6	TRINCOMALEE (45,ENE)	MULLAITTIVU 1) (101,ESE)	BATTICALOA (121,N)	VAVUNIYA (121,E)	ANURADHAPURA (140,ENE)
10.01.26/0600	6	9.1	81.0	MULLAITTIVU 1) (27,SE)	TRINCOMALEE (64,NNW)	VAVUNIYA (67,NE)	ANURADHAPURA (107,NE)	MANNAR (120,E)
10.01.26/1200	12	9.2	80.5	MULLAITTIVU 1) (36,WSW)	VAVUNIYA (50,N)	MANNAR (69,ENE)	JAFFNA (73,SE)	KANKASANTURAI 1) (82,SE)
10.01.26/1800	18	9.1	80.1	MANNAR (24,ENE)	VAVUNIYA (59,NW)	JAFFNA (62,S)	KANKASANTURAI 1) (78,S)	MULLAITTIVU 1) (81,WSW)



OBSERVED AND FORECAST TRACK ALONGWITH QUADRANT WIND DISTRIBUTION OF DEPRESSION OVER SOUTHWEST BAY OF BENGAL OFF NORTHEAST SRI-LANKA COAST BASED ON 0000 UTC (0530 Hrs. IST) OF 10TH JANUARY 2026.



DATE/TIME IN UTC

IST=UTC + 0530

L: LOW PRESSURE AREA

WML: WELL MARKED LOW PRESSURE AREA

D: DEPRESSION (17-27 KT)

DD: DEEP DEPRESSION (28-33 KT)

CS: CYCLONIC STORM (34-47 KT)

SCS: SEVERE CYCLONIC STORM (48-63 KT)

VSCS: VERY SEVERE CYCLONIC STORM (64-89 KT)

ESCS: EXTREMELY SEVERE CYCLONIC STORM (90-119 KT)

SuCS: SUPER CYCLONIC STORM (≥ 120 KT)

● LESS THAN 34 KT

○ 34-47 KT

● ≥ 48 KT

— OBSERVED TRACK

— FORECAST TRACK

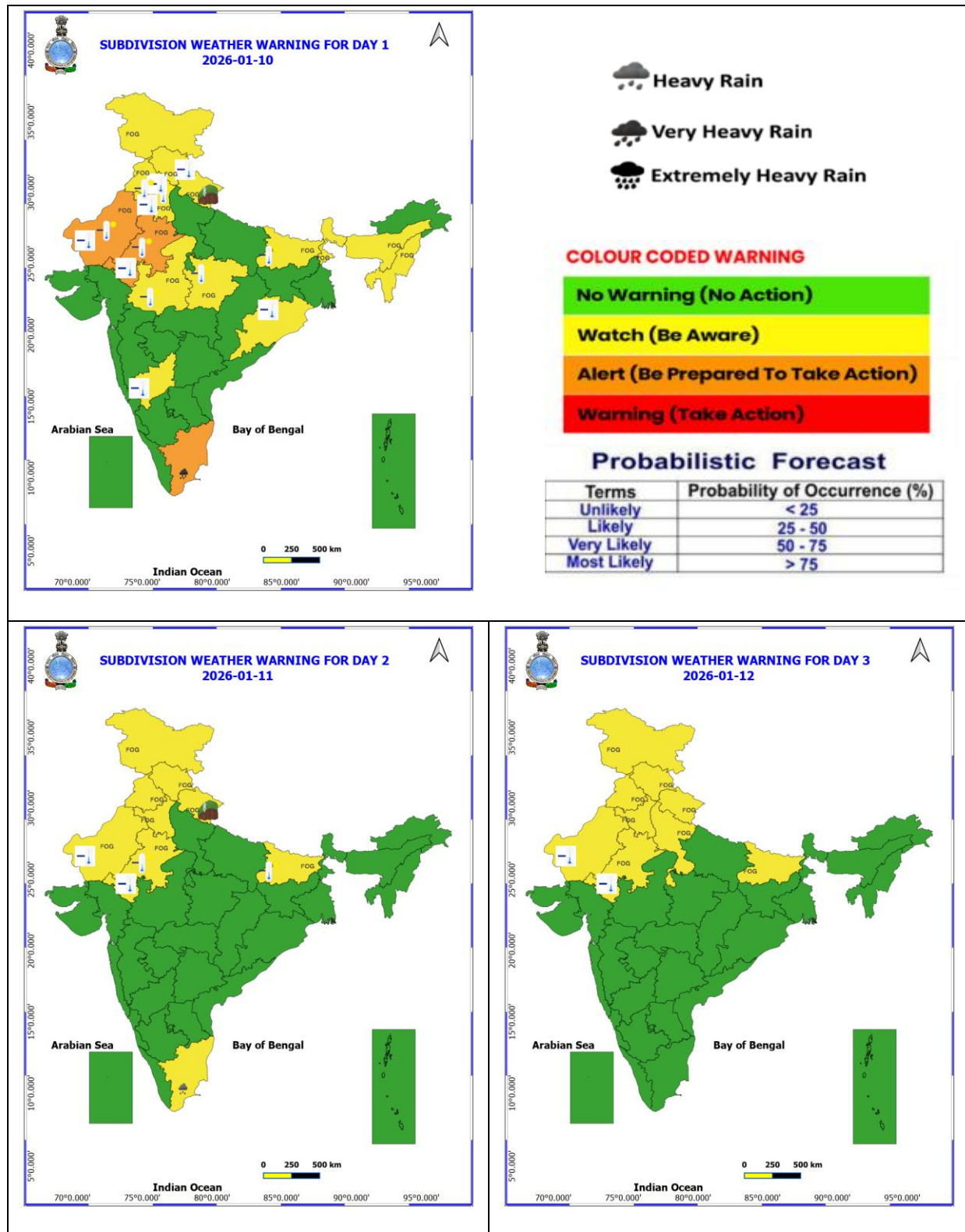
▲ CONE OF UNCERTAINTY

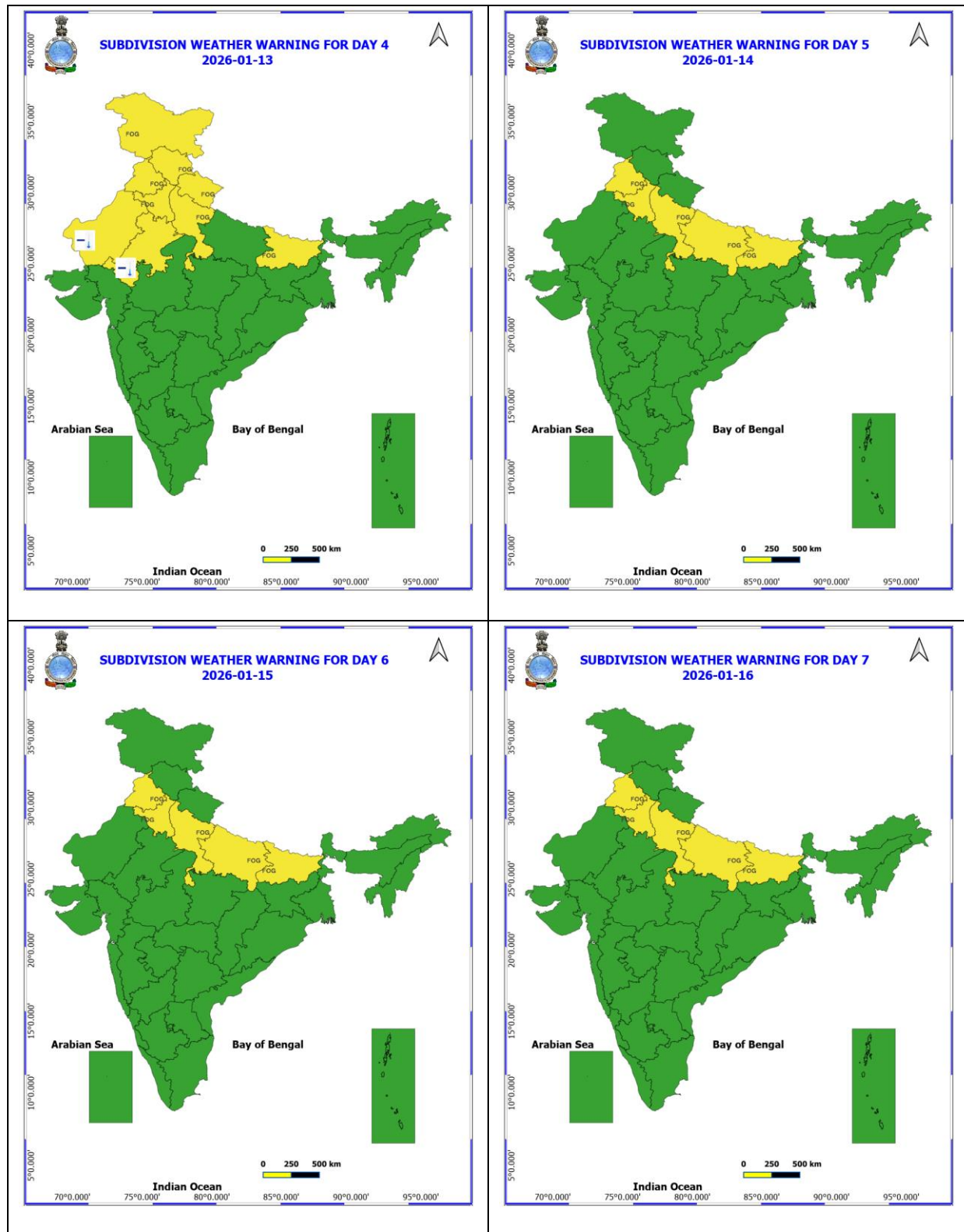
AREA OF MAXIMUM SUSTAINED WIND SPEED:
20-25 KT (40-50 KMPH)

IMPACT OVER THE SEA

MSW (knot/kmph)	Impact	Action
20-25 <u>KT</u> (40-50 kmph)	Rough seas	Total suspension of fishing operations

WARNING GRAPHICS

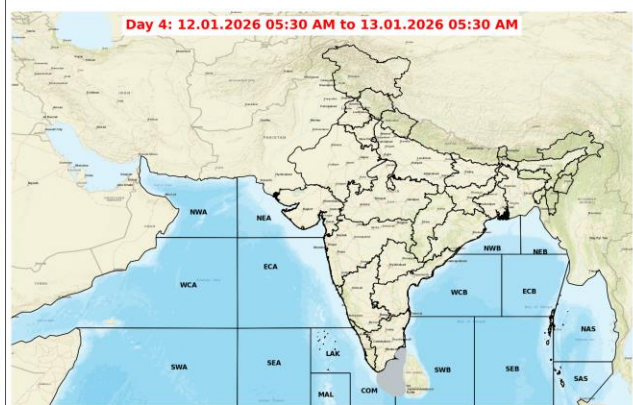
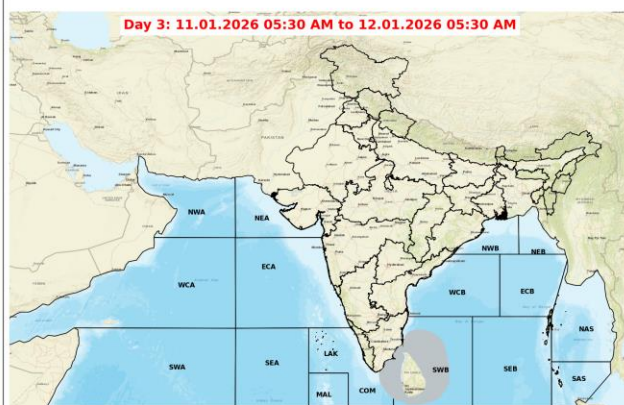
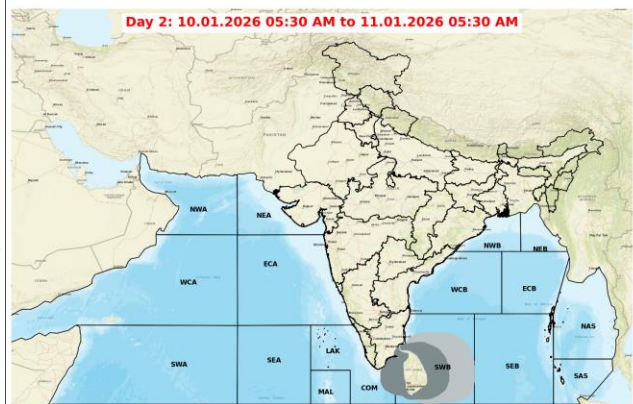
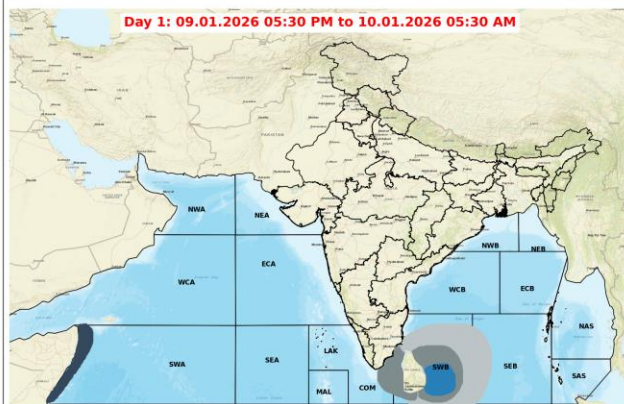




Action may be taken based on ORANGE AND RED COLOUR warnings.

- Vulnerable regions likely urban and hilly areas action may be initiated for heavy rainfall warning.
- As the lead period increases forecast accuracy decreases.

Fishermen Warning Graphics



Legend

Squally Weather with wind speed 35-45 kmph gusting to 55 kmph	Squally wind with speed 55-65 kmph gusting to 75 kmph
Squally Weather with wind speed 40-50 kmph gusting to 60 kmph	CS with Gale winds with speed 60-80 kmph gusting to 90 kmph
Squally Weather with wind speed 45-55 kmph gusting to 65 kmph	SCS with Gale wind speed 90-110 kmph gusting to 120 kmph
Squally wind with speed 45-55 kmph gusting to 65 kmph	VSCS with Gale wind speed 120-165 kmph gusting to 185 kmph
Squally wind with speed 50-60 kmph gusting to 70 kmph	ESCS with Gale wind speed 165-220 kmph gusting to 245 kmph

Fishermen are advised not to venture into the marked areas.