



**India Meteorological Department  
(Ministry of Earth Sciences)**

**NATIONAL BULLETIN NO. 15 (Land/04/2025)**

**TIME OF ISSUE: 2115 HOURS IST**

**DATED: 09.09.2025**

**FROM: INDIA METEOROLOGICAL DEPARTMENT**

**(FAX NO. 24643965/24699216/24623220)**

**TO: CONTROL ROOM, NDM, MINISTRY OF HOME AFFAIRS (FAX.NO. 23093750)**

**CONTROL ROOM NDMA (FAX.NO. 26701729)**

**CABINET SECRETARIAT (FAX.NO.23012284, 23018638)**

**PS TO HON'BLE MINISTER FOR S & T AND EARTH SCIENCES (FAX NO.23316745)**

**SECRETARY, MOES (FAX NO. 24629777)**

**H.Q. (INTEGRATED DEFENCE STAFF AND CDS) (FAX NO. 23005137/23005147)**

**DIRECTOR GENERAL, DOORDARSHAN (23385843)**

**DIRECTOR GENERAL, AIR (23421105, 23421219)**

**PIB MOES (FAX NO. 23389042)**

**UNI (FAX NO. 23355841)**

**D.G. NATIONAL DISASTER RESPONSE FORCE (NDRF) (FAX NO. 26105912, 2436 3260)**

**DIRECTOR, PUNCTUALITY, INDIAN RAILWAYS (FAX NO. 23388503)**

**CHIEF SECRETARY, GOVT. OF GUJARAT (FAX NO. +9179 23250305)**

**CHIEF SECRETARY, GOVT. OF MAHARASHTRA (FAX NO. +9122 22028594)**

**CHIEF SECRETARY, DAMAN & DIU (FAX NO. 0260-2230775)**

**CHIEF SECRETARY, DADRA & NAGAR HAVELI (FAX NO. 0260-2645466)**

**CHIEF SECRETARY, GOA (FAX NO. 0832-2415201)**

**Subject: Depression over southeast Pakistan**

The depression over southeast Pakistan moved west-southwestwards with the speed of 10 kmph during past 6 hours, lay centred at 1730 hrs IST of today, the 09th September, 2025, over the same region near latitude 25.0°N and longitude 67.7°E, 60 km east of Karachi (Pakistan), 60 km west-southwest of Sakrand (Pakistan) 80 km of west-southwest of Hyderabad (Pakistan), and 230 km north-northwest of Naliya (Gujarat).

It is very likely to move west-southwestwards across south Pakistan, maintain its intensity of depression during next 12 hours. Thereafter, it will weaken gradually into a well marked low pressure area and emerge into northeast Arabian Sea during subsequent 12 hours.

**Warnings:**

**(i) Rainfall Warning: NIL**

**(ii) Wind Warnings:**

- Squally weather with wind speed reaching 45-55 kmph gusting to 65 kmph is likely to prevail over northeast Arabian Sea and along & off Saurashtra & Kutch and Pakistan coasts on 9<sup>th</sup> September and would gradually decrease becoming 40-50 kmph gusting to 60 kmph over the same region on 10<sup>th</sup> September

**(iii) Sea condition:** Sea condition is likely to be rough over northeast and adjoining northwest Arabian Sea, along & off Saurashtra & Kutch and Pakistan coasts on 9<sup>th</sup> & 10<sup>th</sup> September and improve thereafter.

**(iv) Fishermen Warning:**

- Fishermen are advised not to venture into northeast Arabian Sea and along & off Saurashtra & Kutch and Pakistan coasts till 10<sup>th</sup> September, 2025.

- Small ships/shipping activities are to be monitored and regulated over north Arabian Sea till 10<sup>th</sup> September 2025.

**(v) Impact Expected and Action Suggested due squally winds over Saurashtra & Kutch**

**Impact expected:**

- ❖ Tourism and recreational activities may be affected.
- ❖ Helicopter services may get affected.
- ❖ onshore/off shore operations

**Action suggested:**

- ❖ Helicopter services to be regulated.
- ❖ Judicious regulation of tourism, recreational and onshore/off shore operations till 10<sup>th</sup> September 2025.

**Next bulletin will be issued at 0230 hrs IST of tomorrow, the 10<sup>th</sup> September, 2025.**

**(A.K.Das)**

**Scientist-F, IMD, New Delhi**

*Copy to: Regional Meteorological Centres- Mumbai, Meteorological Centres Ahmedabad*



# **OBSERVED AND FORECAST TRACK OF DEPRESSION OVER SOUTHEAST PAKISTAN BASED ON 1200 UTC (1730 IST) OF 09<sup>th</sup> SEP, 2025.**



**DATE/TIME IN UTC**

**IST=UTC + 0530**

**L: LOW PRESSURE AREA**

**WML: WELL MARKED LOW PRESSURE AREA**

**D: DEPRESSION (17-27 KT)**

**DD: DEEP DEPRESSION (28-33 KT)**

**CS: CYCLONIC STORM (34-47 KT)**

**SCS: SEVERE CYCLONIC STORM (48-63KT)**

**VSCS: VERY SEVERE CYCLONIC STORM (64-89 KT)**

**ESCS: EXTREMELY SEVERE CYCLONIC STORM (90-119 KT)**

**SuCS: SUPER CYCLONIC STORM (≥ 120 KT)**

**● LESS THAN 34 KT**

**⌀ 34-47 KT**

**⌀ ≥ 48 KT**

**— OBSERVED TRACK**

**— FORECAST TRACK**

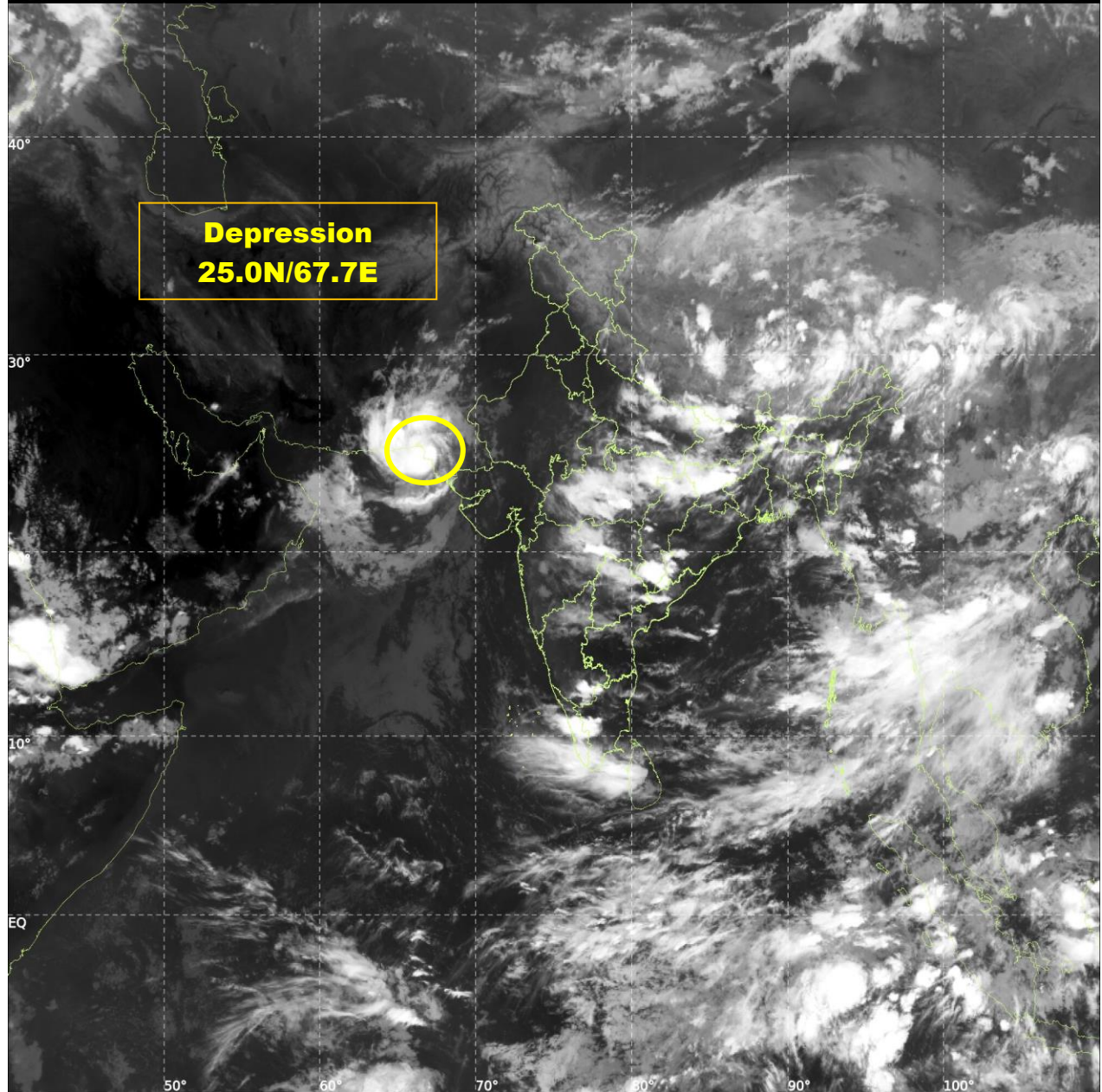
**▲ CONE OF UNCERTAINTY**



INSAT-3DS IMG, Thermal Infrared1 Count @ 10.83  $\mu\text{m}$   
GMT:09-09-2025/(1500-1527) IST:09-09-2025/(2030-2057)  
L1C MERCATOR (LINEAR STRETCH: 1%)

448

910



## Fishermen Warning Graphics

