



**India Meteorological Department
(Ministry of Earth Sciences)**

NATIONAL BULLETIN NO. 20 (Land/04/2025)

TIME OF ISSUE: 2000 HOURS IST

DATED: 10.09.2025

FROM: INDIA METEOROLOGICAL DEPARTMENT

(FAX NO. 24643965/24699216/24623220)

TO: CONTROL ROOM, NDM, MINISTRY OF HOME AFFAIRS (FAX.NO. 23093750)

CONTROL ROOM NDMA (FAX.NO. 26701729)

CABINET SECRETARIAT (FAX.NO.23012284, 23018638)

PS TO HON'BLE MINISTER FOR S & T AND EARTH SCIENCES (FAX NO.23316745)

SECRETARY, MOES (FAX NO. 24629777)

H.Q. (INTEGRATED DEFENCE STAFF AND CDS) (FAX NO. 23005137/23005147)

DIRECTOR GENERAL, DOORDARSHAN (23385843)

DIRECTOR GENERAL, AIR (23421105, 23421219)

PIB MOES (FAX NO. 23389042)

UNI (FAX NO. 23355841)

D.G. NATIONAL DISASTER RESPONSE FORCE (NDRF) (FAX NO. 26105912, 2436 3260)

CHIEF SECRETARY, GOVT. OF GUJARAT (FAX NO. +9179 23250305)

CHIEF SECRETARY, DAMAN & DIU (FAX NO. 0260-2230775)

CHIEF SECRETARY, DADRA & NAGAR HAVELI (FAX NO. 0260-2645466)

Subject: Depression over the central parts of north Arabian Sea & adjoining Pakistan

The depression over the central parts of north Arabian Sea & adjoining Pakistan moved westwards with a speed of 13 kmph during past 6 hours and lay centred at 1730 hours IST of today, the 10th September, 2025 over the same region, near latitude 24.8°N and longitude 64.4°E, about 110 km east-southeast of Pasni (Pakistan), 210 east of Gawadar (Pakistan), 280 km west of Karachi (Pakistan) and 480 km west- northwest of Naliya (Gujarat).

It is very likely to continue to move nearly westwards and weaken gradually into a well-marked low pressure area during next 12 hours.

Warnings:

(i) Rainfall Warning: NIL

(ii) Wind Warnings:

Squally weather with wind speed reaching 40-50 kmph gusting to 60 kmph is likely to prevail over central parts of north Arabian Sea and along & off Pakistan coast on 10th September and would gradually decrease thereafter.

(ii) Sea condition:

Sea condition is likely to be rough over central parts of Arabian Sea and along & off Pakistan coast on 10th September and would gradually improve thereafter.

(iv) Fishermen Warning:

- Fishermen are advised not to venture into central parts of Arabian Sea off Pakistan coast on 10th September, 2025.

Next bulletin will be issued at 0230 hrs IST of tomorrow, the 11th September, 2025.

(Ananda Kumar Das)

Scientist-F, IMD, New Delhi

Copy to: Regional Meteorological Centres- Mumbai, Meteorological Centres Ahmedabad



OBSERVED AND FORECAST TRACK OF DEPRESSION OVER CENTRAL PARTS OF NORTH ARABIAN SEA AND ADJOINING PAKISTAN BASED ON 1200 UTC (1730 IST) OF 10th SEP, 2025



DATE/TIME IN UTC
IST=UTC + 0530
L: LOW PRESSURE AREA
WML: WELL MARKED LOW PRESSURE AREA
D: DEPRESSION (17-27 KT)
DD: DEEP DEPRESSION (28-33 KT)
CS: CYCLONIC STORM (34-47 KT)
SCS: SEVERE CYCLONIC STORM (48-63KT)
VSCS: VERY SEVERE CYCLONIC STORM (64-89 KT)
ESCS: EXTREMELY SEVERE CYCLONIC STORM (90-119 KT)
SuCS: SUPER CYCLONIC STORM (\geq 120 KT)

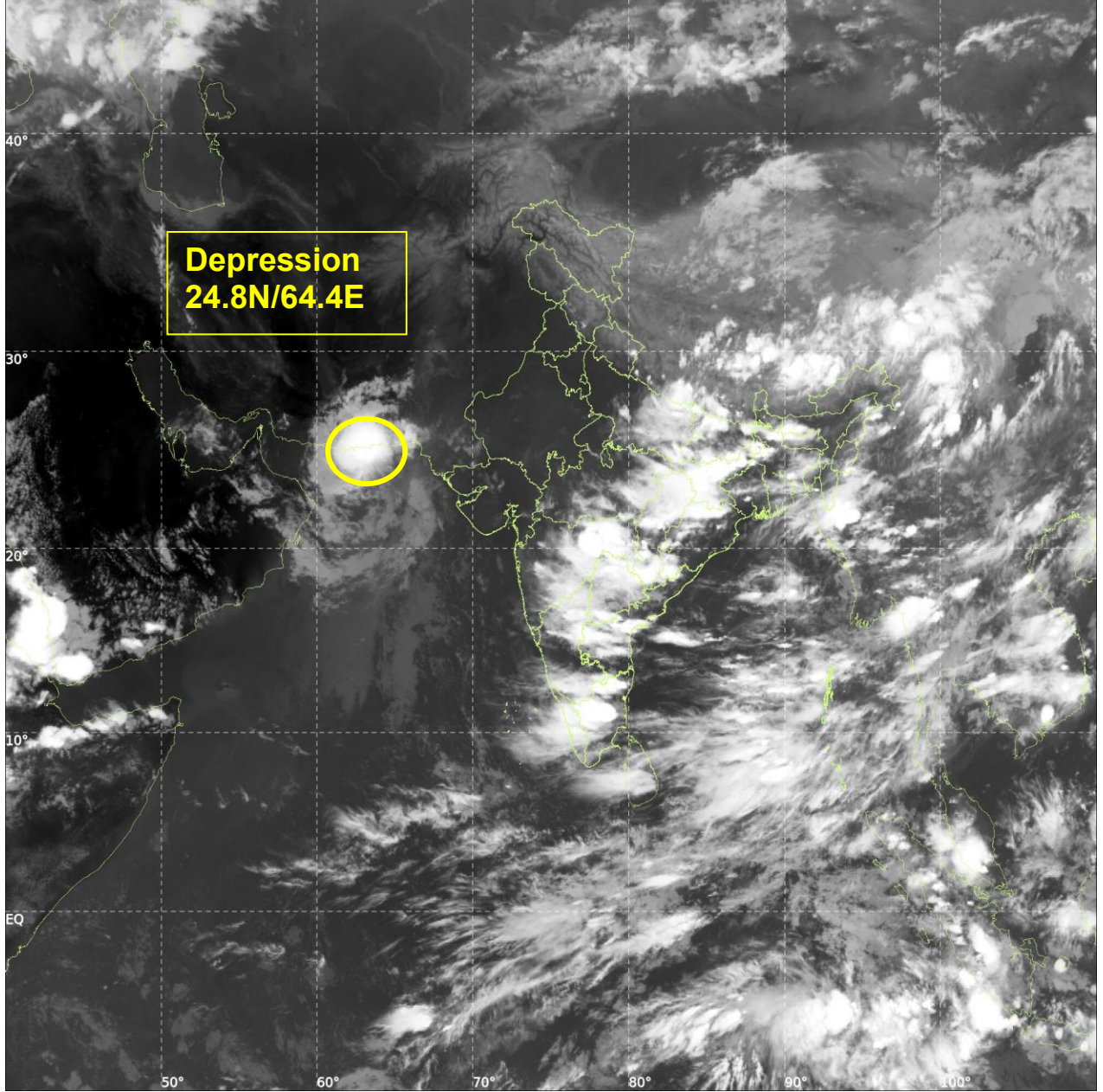
-  LESS THAN 34 KT
-  34-47 KT
-  \geq 48 KT
-  OBSERVED TRACK
-  FORECAST TRACK
-  CONE OF UNCERTAINTY



INSAT-3DS IMG, Thermal Infrared1 Count @ 10.83 μm
GMT:10-09-2025/(1330-1357) IST:10-09-2025/(1900-1927)
LIC MERCATOR (LINEAR STRETCH: 1%)

405

921



Fishermen Warning Graphics

