



**India Meteorological Department  
(Ministry of Earth Sciences)**

**National Bulletin No. 23 (BOB/08/2025)**

**TIME OF ISSUE: 1415 HOURS IST**

**DATED: 28.11.2025**

**FROM: INDIA METEOROLOGICAL DEPARTMENT (FAX NO. 24643965/24699216/24623220)**

**TO: CONTROL ROOM, NDM, MINISTRY OF HOME AFFAIRS (FAX.NO. 23093750)**

**CONTROL ROOM NDMA (FAX.NO. 26701729)**

**CABINET SECRETARIAT (FAX.NO.23012284, 23018638)**

**PS TO HON'BLE MINISTER FOR S & T AND EARTH SCIENCES (FAX NO.23316745)**

**SECRETARY, MOES (FAX NO. 24629777)**

**H.Q. (INTEGRATED DEFENCE STAFF AND CDS) (FAX NO. 23005137/23005147)**

**DIRECTOR GENERAL, DOORDARSHAN (23385843)**

**DIRECTOR GENERAL, AIR (23421105, 23421219)**

**PIB MOES (FAX NO. 23389042)**

**UNI (FAX NO. 23355841)**

**D.G. NATIONAL DISASTER RESPONSE FORCE (NDRF) (FAX NO. 26105912, 2436 3260)**

**DIRECTOR, PUNCTUALITY, INDIAN RAILWAYS (FAX NO. 23388503)**

**CHIEF SECRETARY, ODISHA (FAX NO. 0674-2536660)**

**CHIEF SECRETARY, WEST BENGAL (FAX NO. 033-22144328)**

**CHIEF SECRETARY, ANDAMAN & NICOBAR ISLANDS (FAX NO. 03192-232656)**

**CHIEF SECRETARY, TAMIL NADU (FAX NO. 044-25672304)**

**CHIEF SECRETARY, ANDHRA PRADESH (FAX NO. 0863-2441029)**

**CHIEF SECRETARY, PUDUCHERRY (FAX NO. 0413-2334145)**

**CHIEF SECRETARY, KERALA (FAX NO. 0471-2327176)**

**CHIEF SECRETARY, LAKSHADWEEP (FAX NO. 048-96268124)**

**Subject: Cyclonic Storm Ditwah [Pronunciation: Ditwah] over coastal Sri Lanka & adjoining southwest Bay of Bengal: Cyclone Alert for north Tamil Nadu & Puducherry and adjoining south Andhra Pradesh coasts (Orange Message)**

The **Cyclonic Storm Ditwah [Pronunciation: Ditwah]** over coastal Sri Lanka and adjoining southwest Bay of Bengal moved slowly north-northwestwards with the speed of 4 kmph during past 6 hours and lay centered at 1130 hrs IST of today, the 28th November 2025 over the same region, near latitude 8.4°N and longitude 81.0°E, about 30 km southwest of Trincomalee (Sri Lanka), 110 km northwest of Batticaloa (Sri Lanka), 310 km south-southeast of Karaikal (India), 420 km south-southeast of Puducherry (India) and 520 km south of Chennai (India).

It is very likely to continue to move north-northwestwards across Sri Lanka coast & adjoining southwest Bay of Bengal and reach over southwest Bay of Bengal near North Tamil Nadu, Puducherry and adjoining south Andhra Pradesh coasts by early morning of 30th November.

Forecast track and intensity are given in Table below

Date/Time (IST)	Position (Lat. °N/ Long. °E)	Maximum Sustained Surface Wind Speed (Kmph)	Category Of Cyclonic Disturbance
28.11.25/1130	8.4/81.0	65-75 gusting to 85	Cyclonic Storm
28.11.25/1730	8.8/80.8	65-75 gusting to 85	Cyclonic Storm

28.11.25/2330	9.1/80.7	65-75 gusting to 85	Cyclonic Storm
29.11.25/0530	9.5/80.6	70-80 gusting to 90	Cyclonic Storm
29.11.25/1130	9.9/80.5	70-80 gusting to 90	Cyclonic Storm
29.11.25/2330	10.7/80.4	70-80 gusting to 90	Cyclonic Storm
30.11.25/1130	11.6/80.4	60-70 gusting to 80	Cyclonic Storm
30.11.25/2330	12.5/80.4	55-65 gusting to 75	Deep Depression
01.12.25/1130	13.5/80.4	45-55 gusting to 65	Depression

**(i) Rainfall Warning:**

- ❖ **Tamil Nadu & Puducherry:** Light to moderate rainfall at most places with **heavy to very heavy at many places & extremely heavy rainfall (>20 cm) at isolated places** over south coastal Tamil Nadu on 28<sup>th</sup>, over coastal Tamil Nadu on 29<sup>th</sup> and over north coastal Tamil Nadu & Puducherry on 30<sup>th</sup> November, 2025. Thereafter, rainfall would gradually decrease to light to moderate at many places with **heavy rainfall** at isolated places on 1<sup>st</sup> December.
- ❖ **Coastal Andhra Pradesh-Yanam & Rayalaseema:** Light to moderate rainfall at most places with **heavy to very heavy rainfall** at isolated places on 29<sup>th</sup> November and **heavy to very heavy at a few places & extremely heavy rainfall (>20 cm) at isolated places on 30<sup>th</sup> November**. It would then decrease gradually becoming light to moderate rainfall at many places with **heavy rainfall** at isolated places on 1<sup>st</sup> December.
- ❖ **Kerala & Mahe:** Light to moderate rainfall at many places with **heavy rainfall** at isolated places is very likely during 28<sup>th</sup>-29<sup>th</sup> November.
- ❖ **Telangana:** Light to moderate rainfall at a few places with **heavy rainfall** at isolated places is very likely on 30<sup>th</sup> November.

**(ii) Wind Warning:**

**(a) Southwest Bay of Bengal, Gulf of Mannar, Comorin area and along & off Sri Lanka coasts**

Gale wind speed reaching 65-75 gusting to 85 kmph is prevailing. It would increase becoming 70-80 kmph gusting to 90 kmph from night of 28<sup>th</sup> till 30<sup>th</sup> November morning. Thereafter it is likely to decrease gradually becoming squally wind speed reaching 55-65 gusting to 75 kmph by morning of 1<sup>st</sup> December.

**(b) Along & off north Tamil Nadu & Puducherry Coasts**

Squally wind speed reaching 50-60 gusting to 70 kmph is prevailing. It is likely to increase becoming Gale wind speed reaching 60-70 gusting to 80 kmph is likely to prevail from evening of 28<sup>th</sup> November, 70-80 kmph gusting to 90 kmph by 29<sup>th</sup> morning till 30<sup>th</sup> morning. Thereafter it is likely to decrease gradually becoming squally wind speed reaching 55-65 gusting to 75 kmph by 1<sup>st</sup> December morning.

**(c) Along & off south Tamil Nadu coast**

Squally wind speed reaching 55-65 gusting to 75 kmph is prevailing. It is likely to increase becoming Gale wind speed reaching 60-70 gusting to 80 kmph is likely to prevail along & off south Tamil Nadu from evening of 28<sup>th</sup> till 30<sup>th</sup> November. Thereafter it is likely to decrease gradually becoming squally wind speed reaching 50-60 gusting to 70 kmph by 1<sup>st</sup> December morning.

**(d) Adjoining Westcentral Bay of Bengal and along & off south Andhra Pradesh coast:**

Squally weather with wind speed reaching 35-45 kmph gusting to 55 kmph is prevailing. It is very likely to increase becoming squally winds speed reaching 50-60 kmph gusting to 70 kmph from 28<sup>th</sup> evening and Gale wind speed reaching 60-70 kmph gusting to 80 kmph from 29<sup>th</sup> evening till

30<sup>th</sup> morning. Thereafter, it is likely to decrease becoming squally wind speed reaching 45-55 kmph gusting to 65 kmph on 01<sup>st</sup> December morning.

**(d) Adjoining areas of Southeast Arabian Sea, Lakshadweep, Maldives and along & off Kerala coast:**

Squally weather with wind speed reaching 45-55 kmph gusting to 65 kmph likely to prevail during 28<sup>th</sup>-29<sup>th</sup> November.

**(iii) Sea Condition:**

**(a) Southwest Bay of Bengal, Gulf of Mannar, Comorin area and along & off Sri Lanka coasts**

Very rough to high sea conditions are likely to prevailing, it is likely to be high till 30<sup>th</sup> November. Thereafter it is likely to improve from 1<sup>st</sup> December morning.

**(b) Along & off north Tamil Nadu & Puducherry Coasts**

Rough to very rough sea conditions are prevailing. It is likely to become very rough to high sea conditions till 30<sup>th</sup> November. It is likely to improve gradually becoming very rough to rough from 1<sup>st</sup> December morning.

**(c) Along & off south Tamil Nadu coast**

Very rough to high sea condition are likely to prevail till 30<sup>th</sup> November midnight. It is likely to improve gradually becoming very rough to rough from 1<sup>st</sup> December morning.

**(d) Adjoining Westcentral Bay of Bengal and along & off south Andhra Pradesh coast:**

Moderate to rough sea conditions are prevailing and likely to become rough to very rough from 28<sup>th</sup> evening and high from 29<sup>th</sup> evening till 30<sup>th</sup> November. Thereafter, it is likely to improve gradually on 01<sup>st</sup> December morning.

**(e) Adjoining areas of Southeast Arabian Sea, Lakshadweep, Maldives and along & off Kerala coast:**

Rough to very rough sea conditions are likely during 28<sup>th</sup>-29<sup>th</sup> November.

**Storm Surge Warning:**

Storm surge of height about 1.0 to 1.5 m above the astronomical tide is likely to inundate the low-lying coastal areas of north Sri Lanka till 29<sup>th</sup> evening.

**(iv) Fishermen Warning:**

(a) Total suspension of fishing operations in coastal areas of Sri Lanka, Tamil Nadu, Puducherry and south Andhra Pradesh coasts till 01<sup>st</sup> December.

**(b) Fishermen are advised not to venture into**

(i) Southwest Bay of Bengal, Gulf of Mannar, Comorin area and along & off Tamil Nadu, Puducherry & Sri Lanka coasts till 01<sup>st</sup> December.

(ii) Adjoining areas of westcentral Bay of Bengal and along & off Andhra Pradesh coast till 1<sup>st</sup> December.

(iii) Adjoining areas of Southeast Arabian Sea, Lakshadweep, Maldives and along & off Kerala coast till 30<sup>th</sup> November.

(c) Those out at sea should avoid southwest Bay of Bengal, Gulf of Mannar, Comorin area and along & off Tamil Nadu, Puducherry, south Andhra Pradesh & Sri Lanka coasts; adjoining westcentral Bay of Bengal till 01<sup>st</sup> December and Southeast Arabian Sea, Lakshadweep, Maldives and along & off Kerala coast till 30<sup>th</sup> November.

**(v) Impact Expected and Action Suggested due to heavy rain and strong winds (Tamil Nadu, Puducherry and south Andhra Pradesh)**

**Impact Expected**

- ❖ Major damage to thatched houses/ huts. Roof tops may blow off. Unattached metal sheets may fly.
- ❖ Damage to power and communication lines.
- ❖ Major damage to Kutcha and some damage to Pucca roads. Flooding of escape routes.
- ❖ Breaking of tree branches, uprooting of large avenue trees. Large-scale damage to banana and papaya trees. Large dead limbs blown from trees.
- ❖ Damage to paddy crops, horticultural and standing crops and orchards due to inundation & winds.
- ❖ Inundation of low-lying areas in coastal districts due to heavy rainfall and flash flood
- ❖ Localized Flooding of roads, water logging in low lying areas and closure of underpasses mainly in urban areas.
- ❖ Occasional reduction in visibility due to heavy rainfall.
- ❖ Disruption of traffic due to water logging and squally winds
- ❖ Localized Landslides/Mudslides It may lead to riverine flooding in some river catchments (for riverine flooding please visit Web page of CWC)
- ❖ Damage to embankments/ salt pans.
- ❖ Possibility of coastal flooding and coastal erosion is also very likely over coastal districts of Tamil Nadu and Puducherry and south Andhra Pradesh & Yanam.

**Action suggested:**

- ❖ Total suspension of fishing operations.
- ❖ Coastal hutment dwellers to be moved to safer places. People in affected areas to remain indoors.
- ❖ Movement in motor boats unsafe.
- ❖ Judicious regulation of offshore/onshore operations
- ❖ People are advised to keep a watch on the weather for worsening conditions and be ready to move to safer places accordingly.
- ❖ Take safe shelters; do not take shelter under trees, as there could be lightning.
- ❖ In case of expected lightning, unplug electrical/ electronic appliances, immediately, get out of water bodies and keep away from all the objects that conduct electricity.
- ❖ Tourism and recreational activities to be regulated.
- ❖ Surface transport and helicopter services to be regulated.

**Next bulletin will be issued at 1730 hours IST of today, the 28<sup>th</sup> November, 2025.**

**(Ananda Kumar Das)  
Scientist-F, IMD, New Delhi**

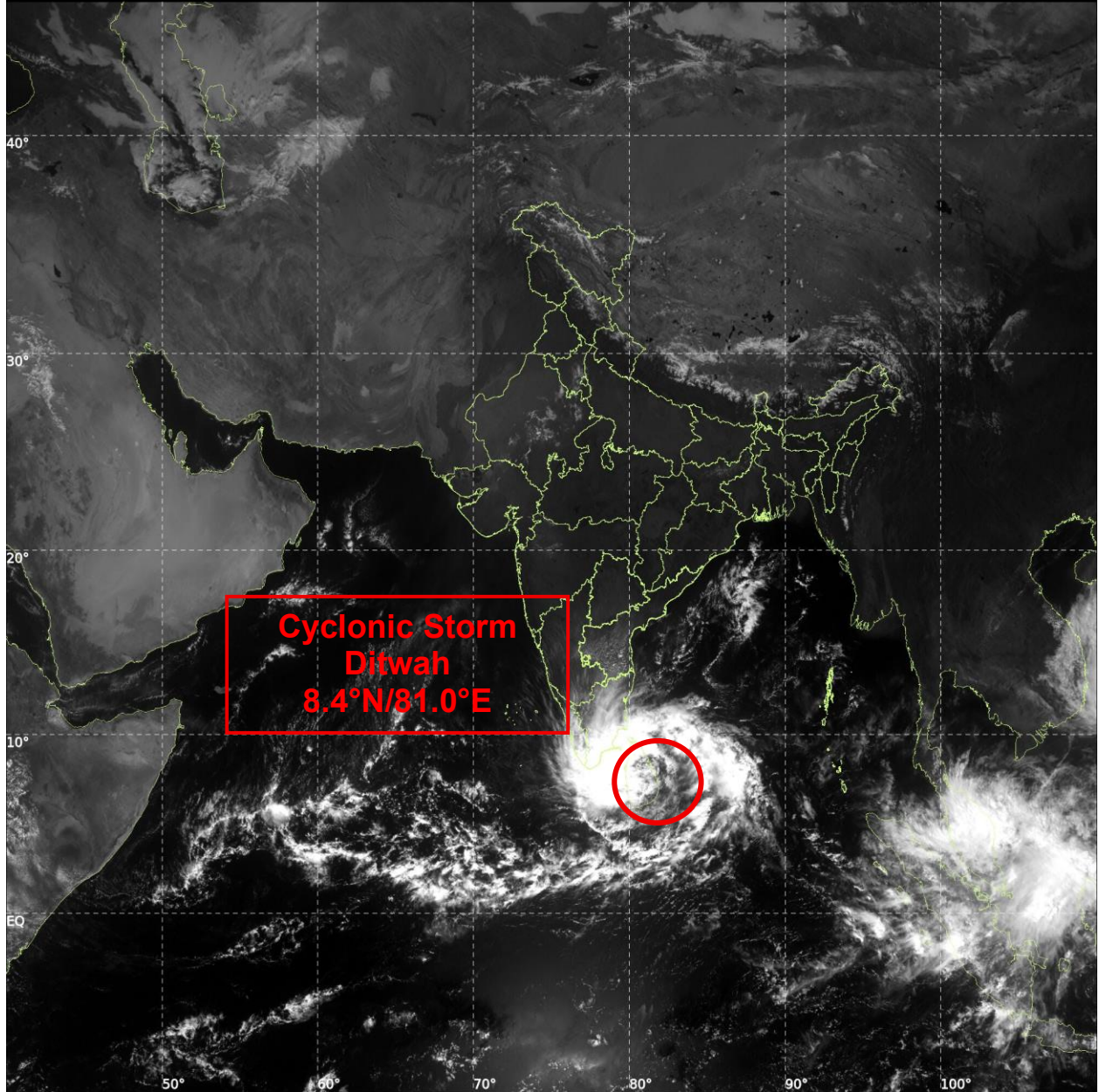
*Copy to: ACWC Kolkata/ACWC Chennai/CWC Bhubaneswar/CWC Vishakhapatnam/CWC Thiruvananthapuram/  
Meteorological Centre Vijay Puram/ and Meteorological Centre Amaravati*



INSAT-3DS IMG, Visible Count @ 0.65  $\mu\text{m}$   
GMT:28-11-2025/(0700-0727) IST:28-11-2025/(1230-1257)  
LIC MERCATOR (LINEAR STRETCH: 0.5%)

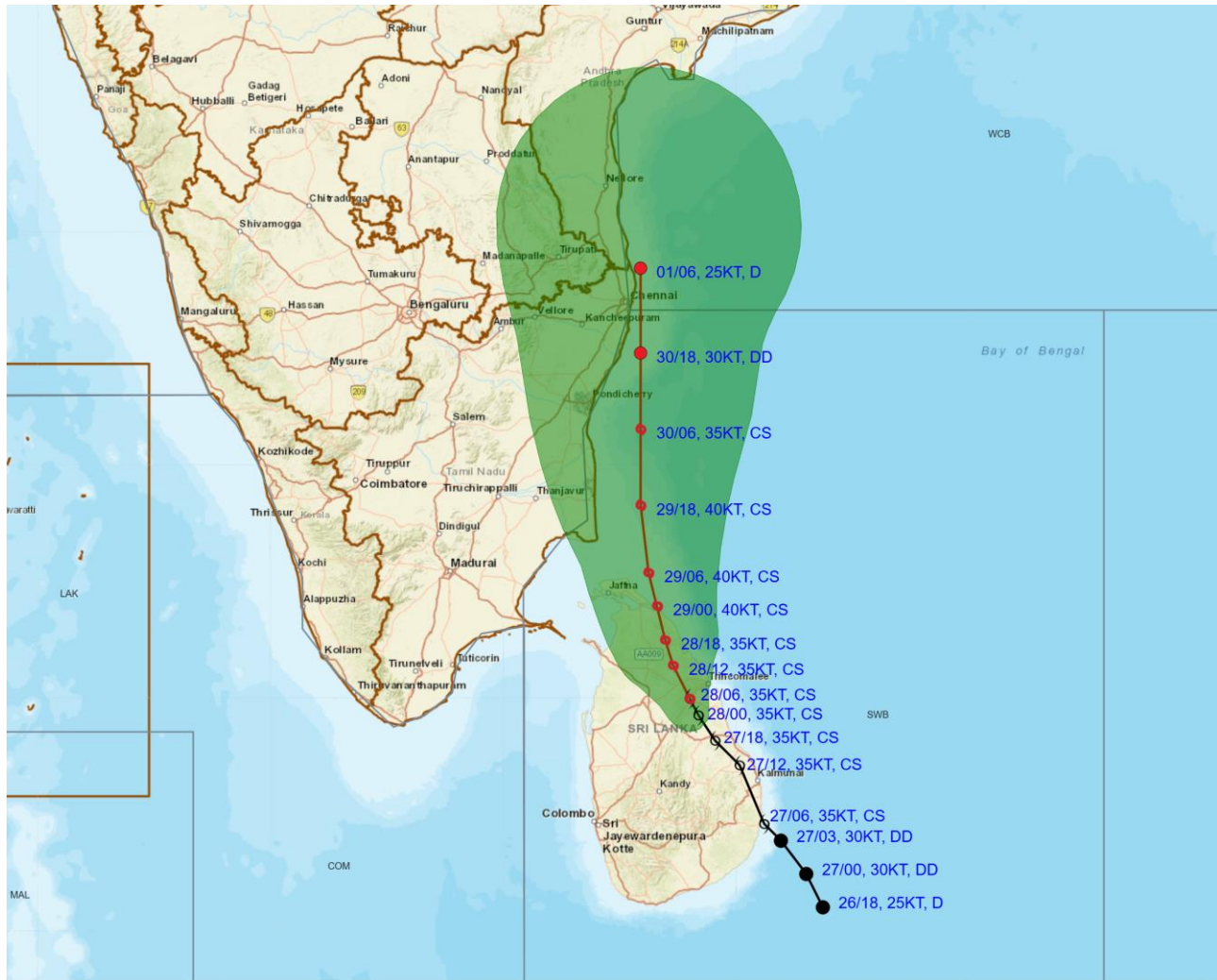
63

368





**OBSERVED AND FORECAST TRACK OF CYCLONIC STORM "DITWAH" OVER COASTAL SRI LANKA & ADJOINING SOUTHWEST BAY OF BENGAL BASED ON 0600 UTC (1130 Hrs. IST) OF 28<sup>TH</sup> NOVEMBER 2025**



**DATE/TIME IN UTC**

**IST=UTC + 0530**

**L: LOW PRESSURE AREA**

**WML: WELL MARKED LOW PRESSURE AREA**

**D: DEPRESSION (17-27 KT)**

**DD: DEEP DEPRESSION (28-33 KT)**

**CS: CYCLONIC STORM (34-47 KT)**

**SCS: SEVERE CYCLONIC STORM (48-63KT)**

**VSCS: VERY SEVERE CYCLONIC STORM (64-89 KT)**

**ESCS: EXTREMELY SEVERE CYCLONIC STORM (90-119 KT)**

**SuCS: SUPER CYCLONIC STORM ( $\geq$  120 KT)**

LESS THAN 34 KT

34-47 KT

$\geq$  48 KT

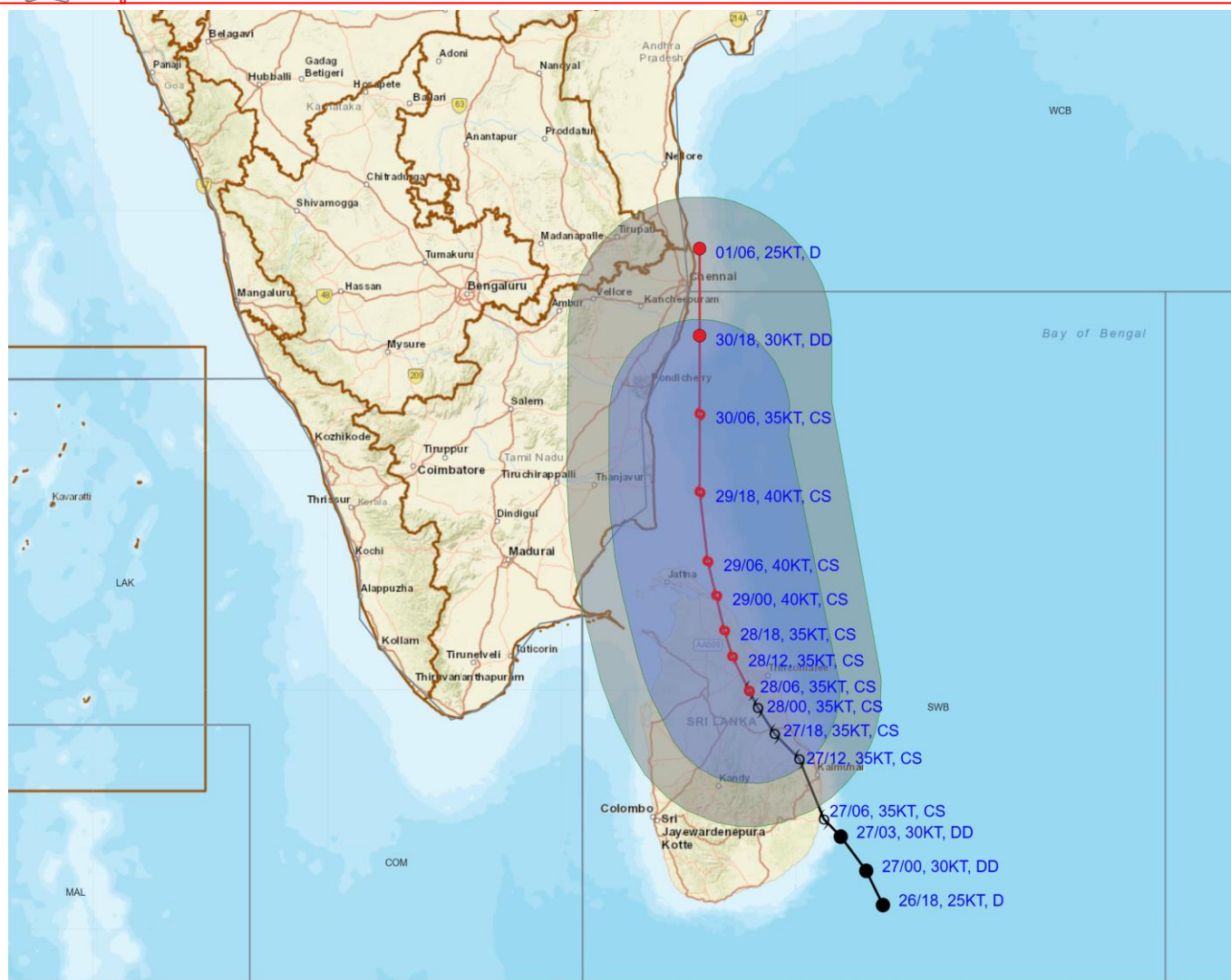
OBSERVED TRACK

FORECAST TRACK

CONE OF UNCERTAINTY



**OBSERVED AND FORECAST TRACK ALONGWITH QUADRANT WIND DISTRIBUTION OF CYCLONIC STORM "DITWAH" OVER COASTAL SRI LANKA & ADJOINING SOUTHWEST BAY OF BENGAL BASED ON 0600 UTC (1130 Hrs. IST) OF 28th NOVEMBER 2025**



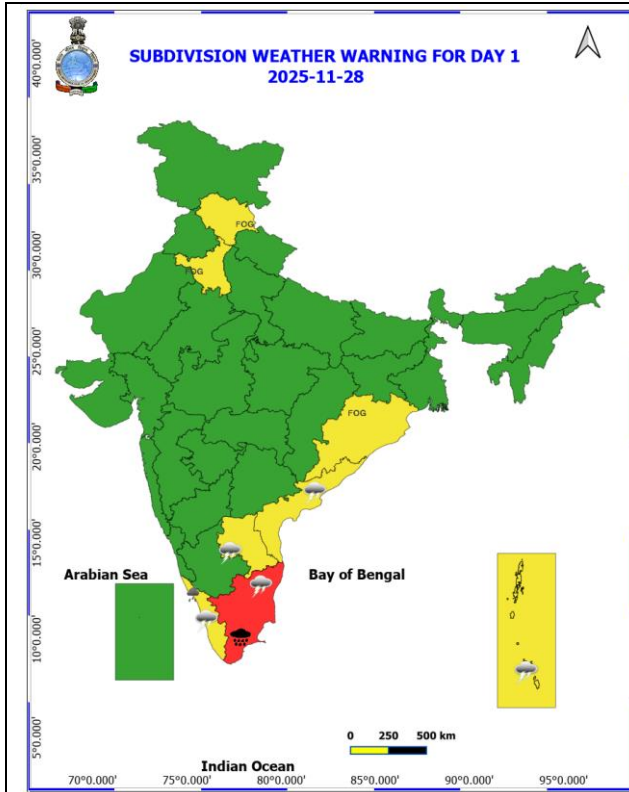
DATE/TIME IN UTC  
 IST=UTC + 0530  
 L: LOW PRESSURE AREA  
 WML: WELL MARKED LOW PRESSURE AREA  
 D: DEPRESSION (17-27 KT)  
 DD: DEEP DEPRESSION (28-33 KT)  
 CS: CYCLONIC STORM (34-47 KT)  
 SCS: SEVERE CYCLONIC STORM (48-63KT)  
 VSCS: VERY SEVERE CYCLONIC STORM (64-89 KT)  
 ESCS: EXTREMELY SEVERE CYCLONIC STORM (90-119 KT)  
 SuCS: SUPER CYCLONIC STORM ( $\geq$  120 KT)

● LESS THAN 34 KT  
 ○ 34-47 KT  
 ⊙  $\geq$  48 KT  
 — OBSERVED TRACK  
 — FORECAST TRACK  
 ○ CONE OF UNCERTAINTY  
 AREA OF MAXIMUM SUSTAINED WIND SPEED:  
 ■ 28-33 KT (52-61 KMPH)  
 ■ 34-49 KT (62-91 KMPH)  
 ■ 50-63 KT (92-117 KMPH)  
 ■  $\geq$  64 KT ( $\geq$ 118 KMPH)

**IMPACT OVER THE SEA**

MSW (knot/kmph)	Impact	Action
28-33 (52-61)	Very rough seas	Total suspension of fishing operations
34-49 (62-91)	High to very high seas	Total suspension of fishing operations
50-63 (92-117)	Very high seas	Total suspension of fishing operations
$\geq$ 64 ( $\geq$ 118)	Phenomenal	Total suspension of fishing operations

# WEATHER WARNING GRAPHICS



Heavy Rain

Very Heavy Rain

Extremely Heavy Rain

### COLOUR CODED WARNING

No Warning (No Action)

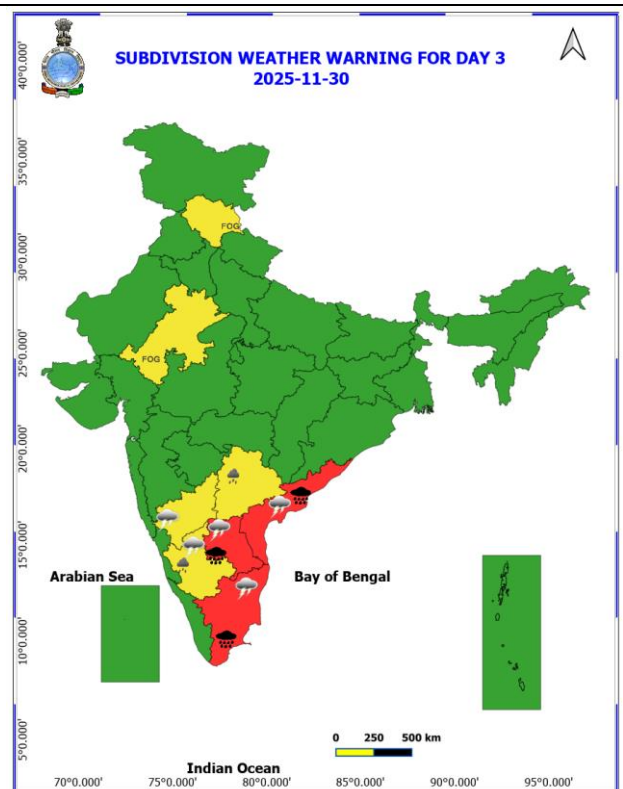
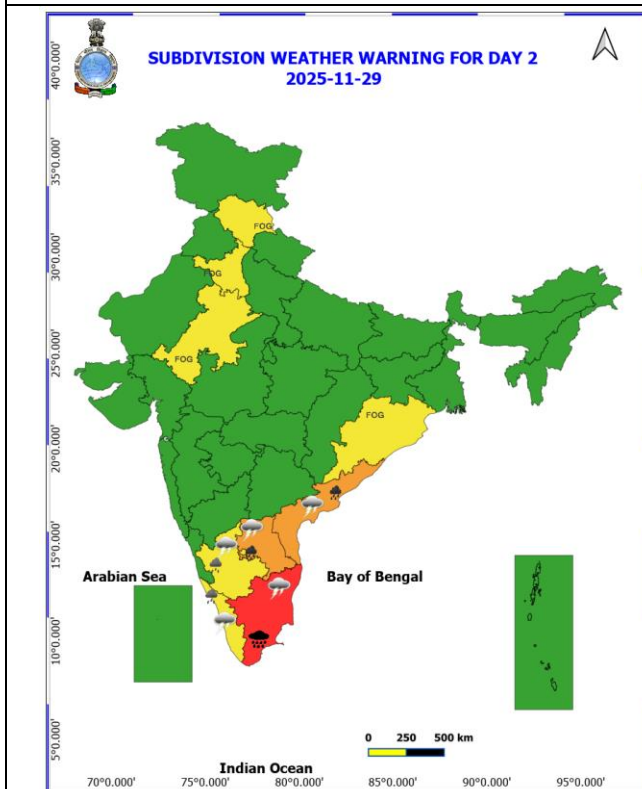
Watch (Be Aware)

Alert (Be Prepared To Take Action)

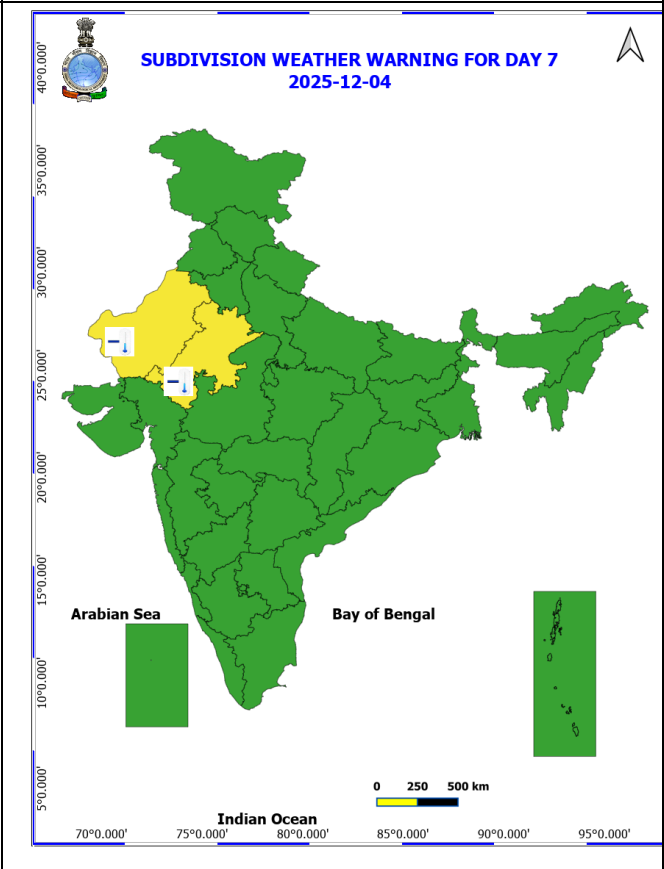
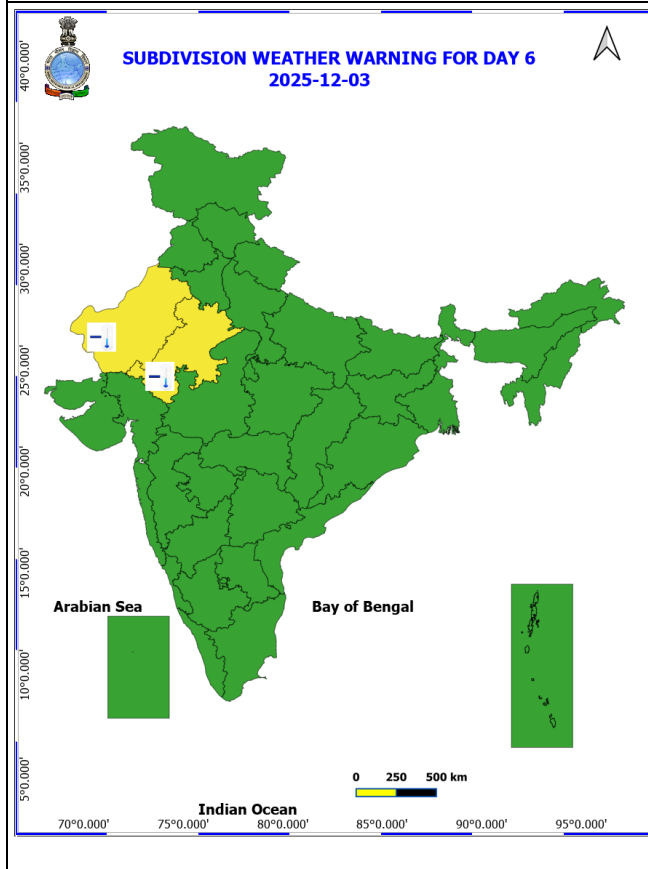
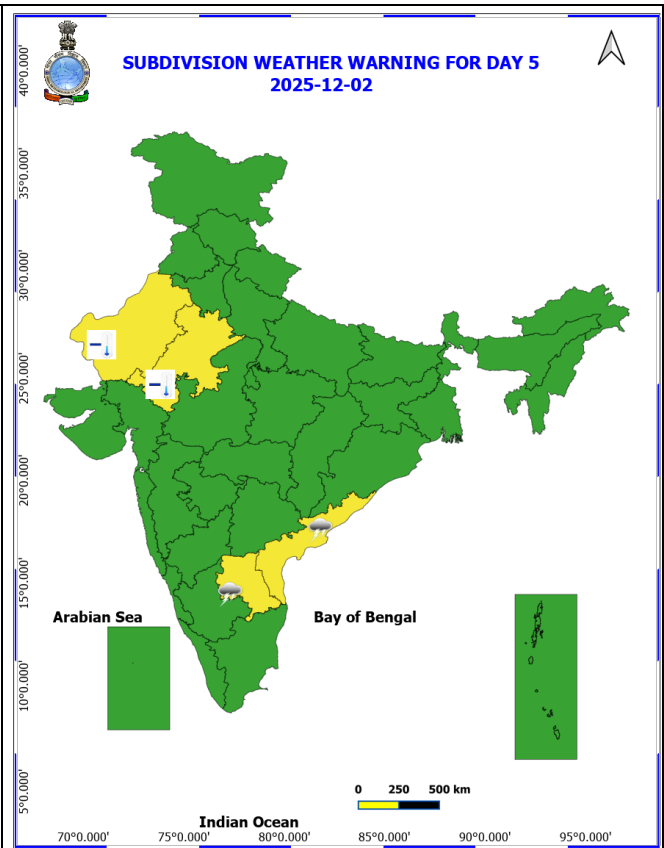
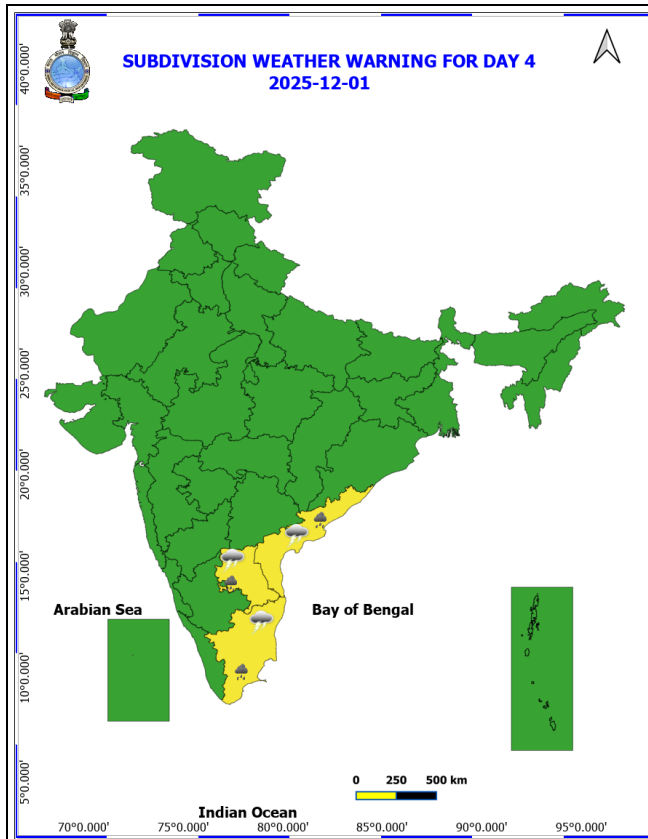
Warning (Take Action)

### Probabilistic Forecast

Terms	Probability of Occurrence (%)
Unlikely	< 25
Likely	25 - 50
Very Likely	50 - 75
Most Likely	> 75

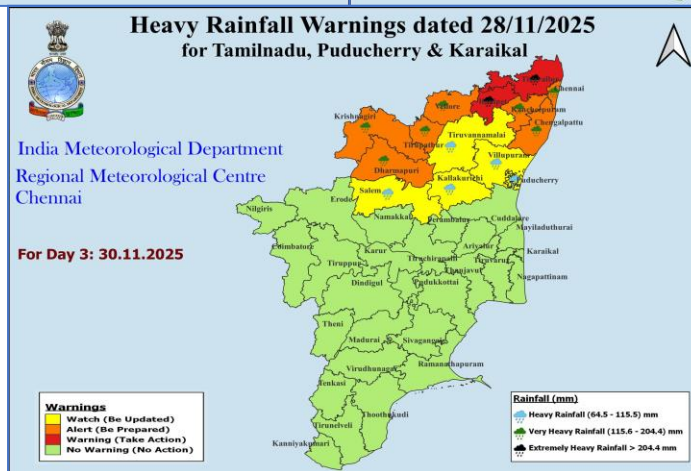
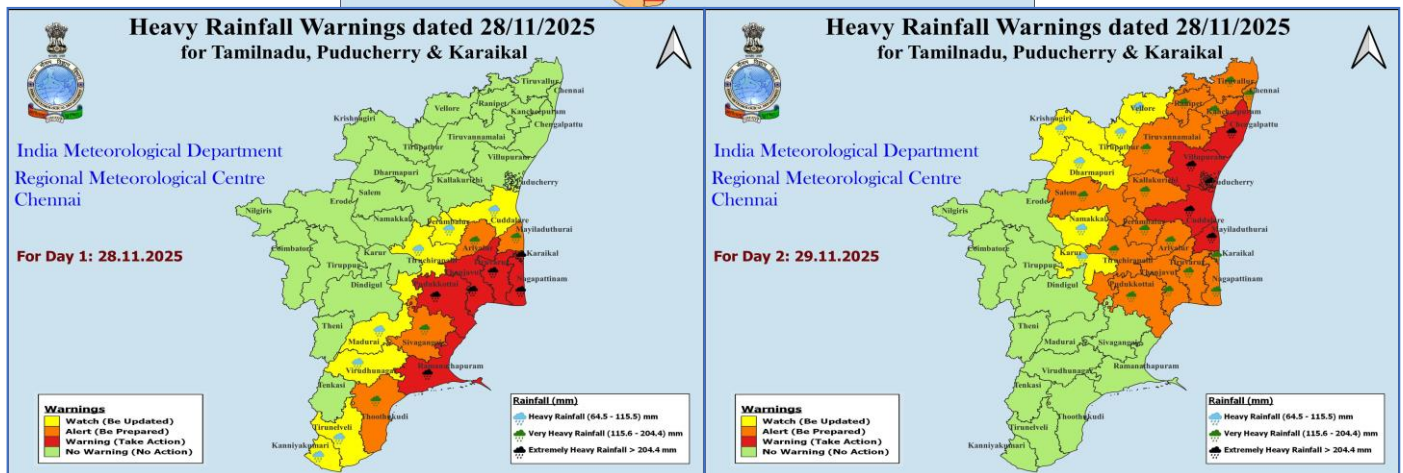
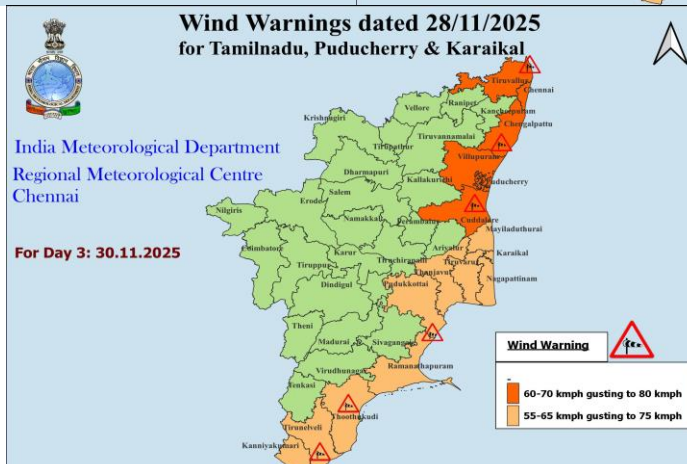
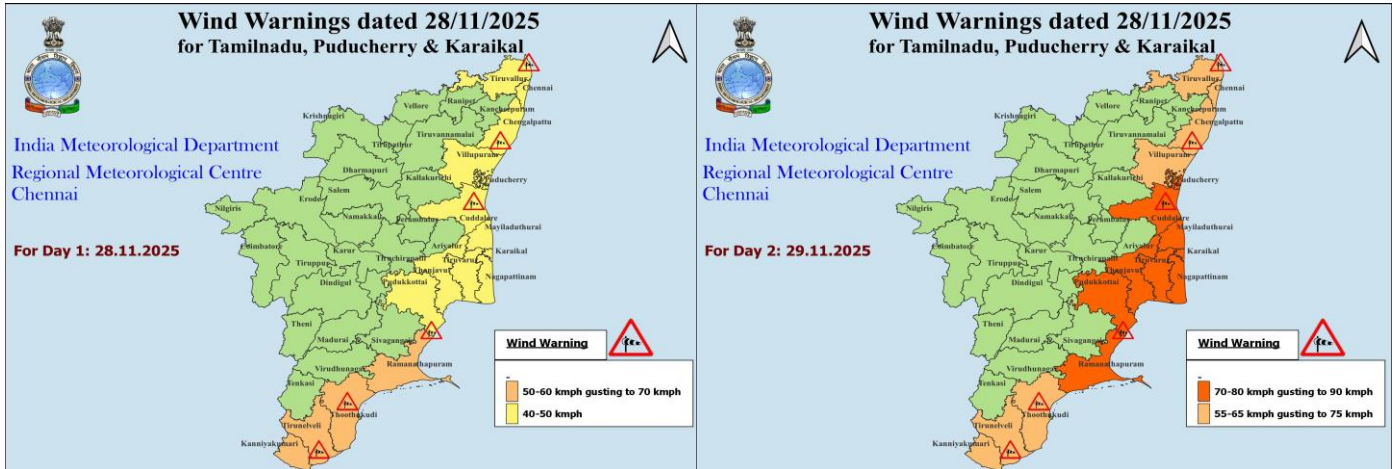






- Action may be taken based on **ORANGE AND RED** COLOUR warnings.
- Vulnerable regions likely urban and hilly areas action may be initiated for heavy rainfall warning.
- As the lead period increases forecast accuracy decreases.

# District-wise Warning Graphics for Tamil Nadu & Puducherry



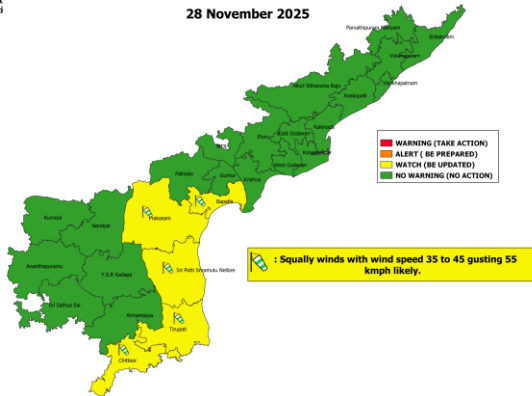
# District-wise Warning Graphics for Andhra Pradesh & Yanam



**Wind warnings for Andhra Pradesh and Yanam.**  
Valid from 0830 hrs IST of 28.11.2025 to 0830 hrs IST of 29.11.2025

Date of Issue:- 28 November 2025

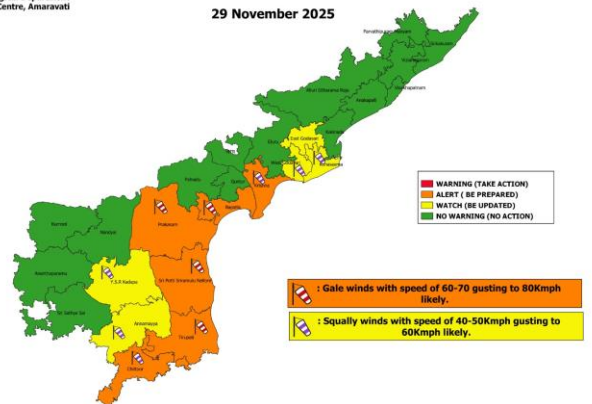
28 November 2025



**Wind warnings for Andhra Pradesh and Yanam.**  
Valid from 0830 hrs IST of 29.11.2025 to 0830 hrs IST of 30.11.2025

Date of Issue:- 28 November 2025

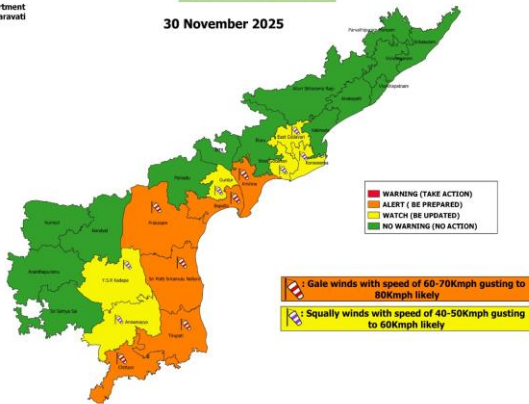
29 November 2025



**Wind warnings for Andhra Pradesh and Yanam.**  
Valid from 0830 hrs IST of 30.11.2025 to 0830 hrs IST of 01.12.2025

Date of Issue:- 28 November 2025

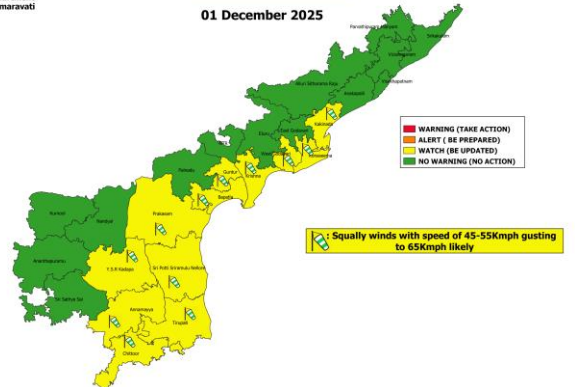
30 November 2025



**Wind warnings for Andhra Pradesh and Yanam.**  
Valid from 0830 hrs IST of 01.12.2025 to 0830 hrs IST of 02.12.2025

Date of Issue:- 28 November 2025

01 December 2025



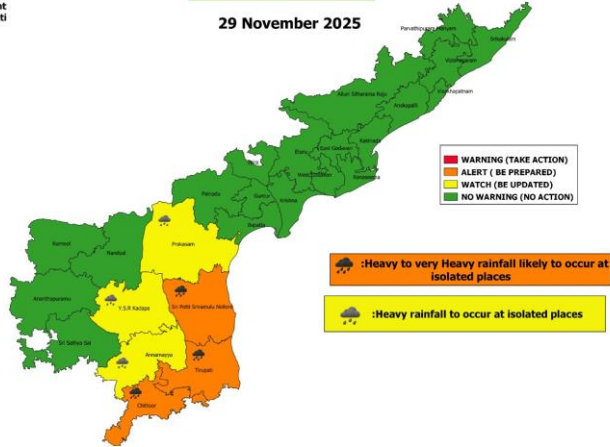
# District-wise Warning Graphics for Andhra Pradesh & Yanam



**Rainfall warnings for Andhra Pradesh and Yanam.**  
Valid from 0830 hrs IST of 29.11.2025 to 0830 hrs IST of 30.11.2025

Date of Issue:- 28 November 2025

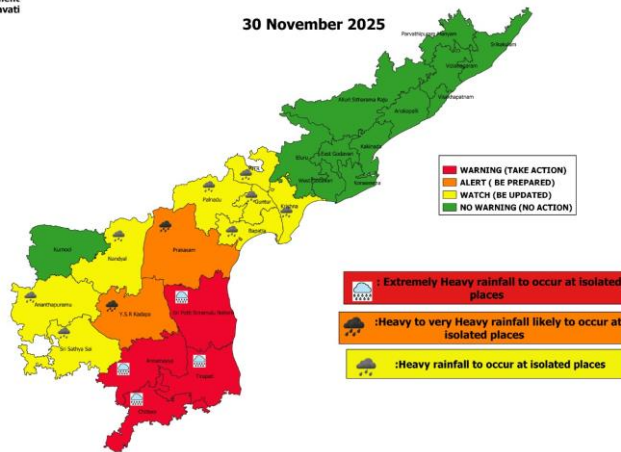
29 November 2025



**Rainfall warnings for Andhra Pradesh and Yanam.**  
Valid from 0830 hrs IST of 30.11.2025 to 0830 hrs IST of 01.12.2025

Date of Issue:- 28 November 2025

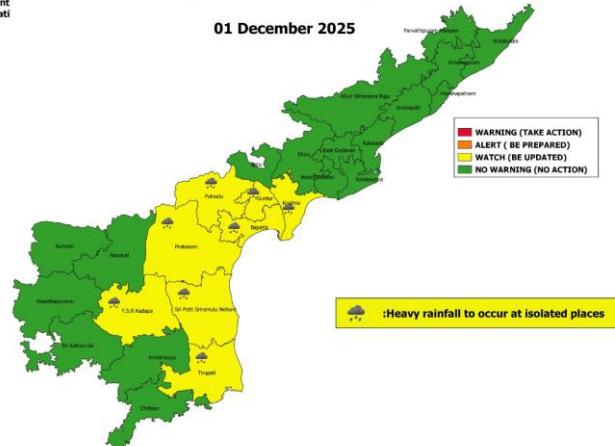
30 November 2025



**Rainfall warnings for Andhra Pradesh and Yanam.**  
Valid from 0830 hrs IST of 01.12.2025 to 0830 hrs IST of 02.12.2025

Date of Issue:- 28 November 2025

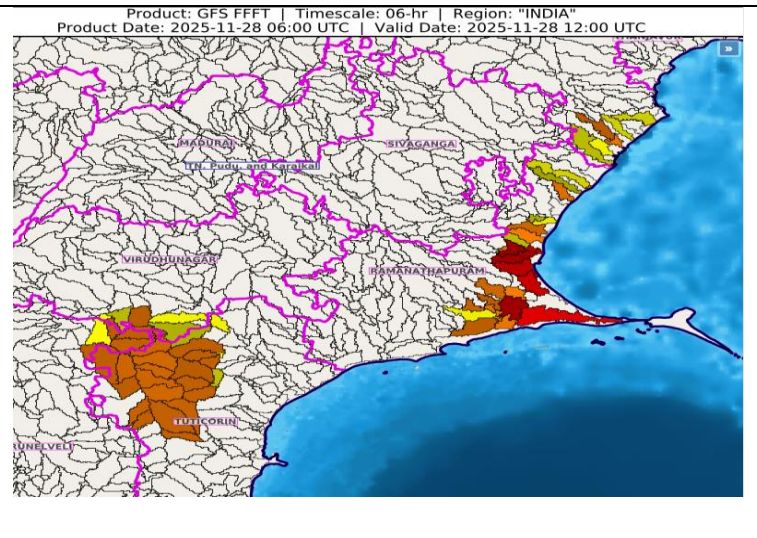
01 December 2025



## Flash Flood Guidance

Persistent Flash Flood Threat (PFFT) till 1730 IST of 28-11-2025 :  
 Moderate flash flood threat likely over few watersheds & neighbourhoods of following Met Sub-divisions during next 6 hours.

Tamil Nadu - Puducherry & Karaikal - Pudukkottai, Ramanathapuram, Tirunelveli, Tuticorin and Virudhunagar districts.

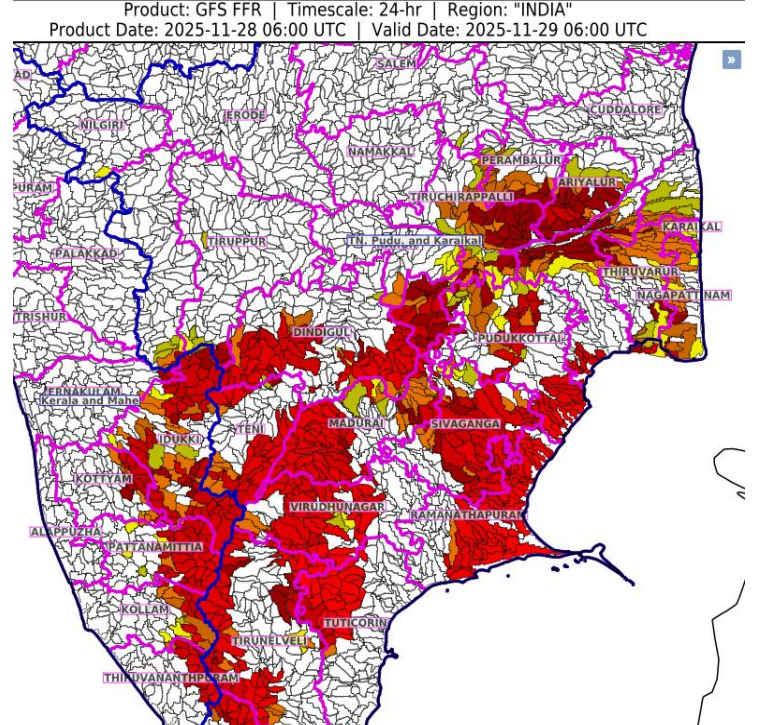


24 hours Outlook for the Flash Flood Risk (FFR) till 1130 IST of 29-11-2025:  
 Moderate flash flood risk likely over few watersheds & neighbourhoods of following Met Sub-divisions during next 24 hours.

Kerala & Mahe - Idukki, Kollam, Kottayam, Pattanamittia and Thiruvananthapuram districts.

Tamil Nadu - Puducherry & Karaikal - Karaikal, Ariyalur, Coimbatore, Dindigul, Kanyakumari, Karur, Madurai, Nagapattinam, Perambalur, Pudukkottai, Ramanathapuram, Salem, Sivaganga, Teni, Thanjavur, Thiruvarur, Tiruchirappalli, Tirunelveli, Tiruppur, Tuticorin and Virudhunagar districts.

Surface runoff/ Inundation may occur at some fully saturated soils & low-lying areas over Area of Concern (AoC) as shown in map due to expected rainfall occurrence in next 24 hours.



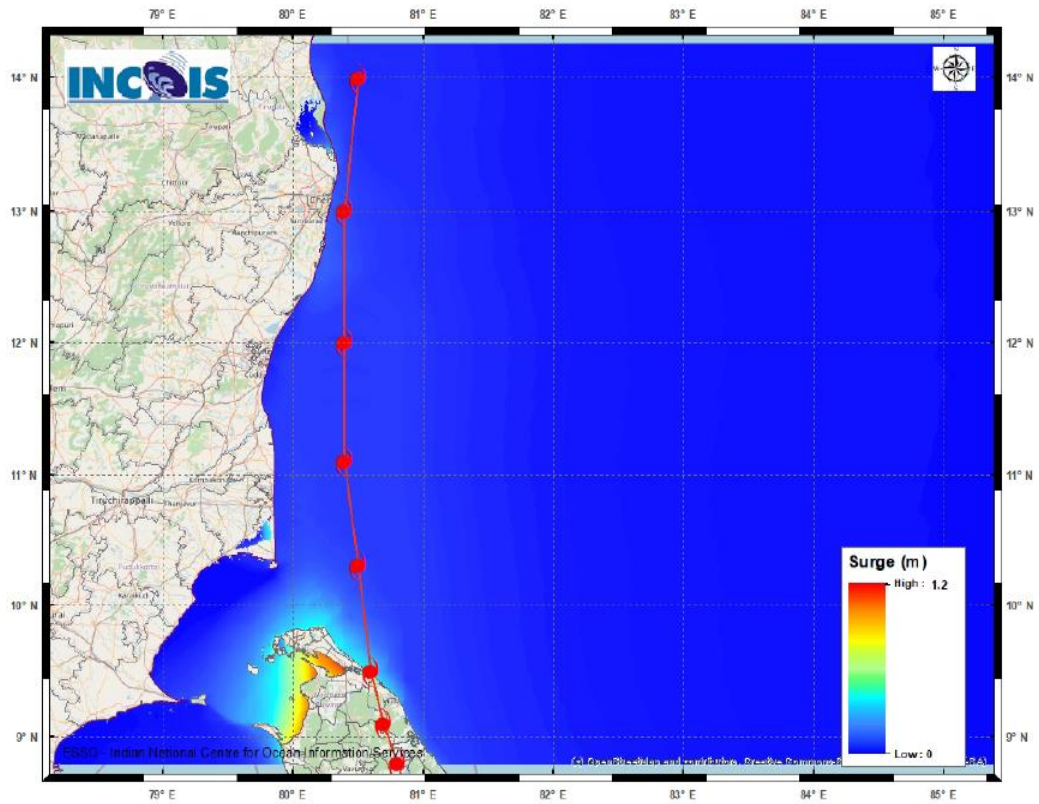
Flash Flood Threat	Flash Flood Risk
<span style="display: inline-block; width: 20px; height: 10px; background-color: red; border: 1px solid black;"></span> <b>High Threat (Take Action)</b>	<span style="display: inline-block; width: 20px; height: 10px; background-color: red; border: 1px solid black;"></span> <b>High Risk (Take Action)</b>
<span style="display: inline-block; width: 20px; height: 10px; background-color: orange; border: 1px solid black;"></span> <b>Moderate threat (Be Prepared)</b>	<span style="display: inline-block; width: 20px; height: 10px; background-color: orange; border: 1px solid black;"></span> <b>Moderate Risk (Be Prepared)</b>
<span style="display: inline-block; width: 20px; height: 10px; background-color: yellow; border: 1px solid black;"></span> <b>Low Threat (Be Updated)</b>	<span style="display: inline-block; width: 20px; height: 10px; background-color: yellow; border: 1px solid black;"></span> <b>Low Risk (Be Updated)</b>

## Storm Surge Guidance

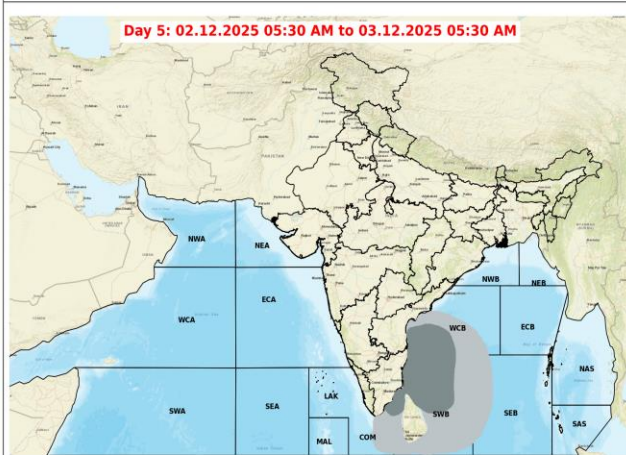
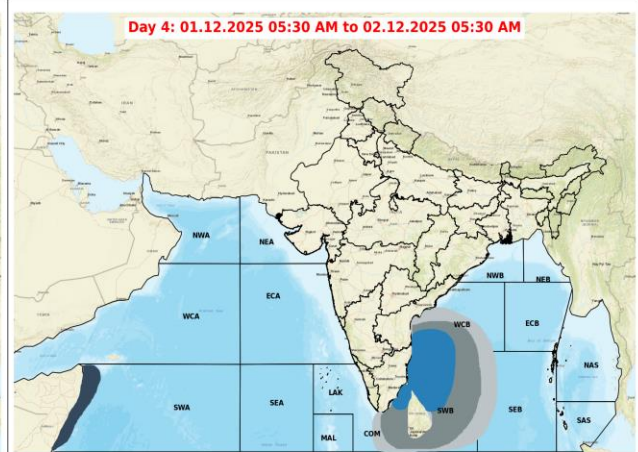
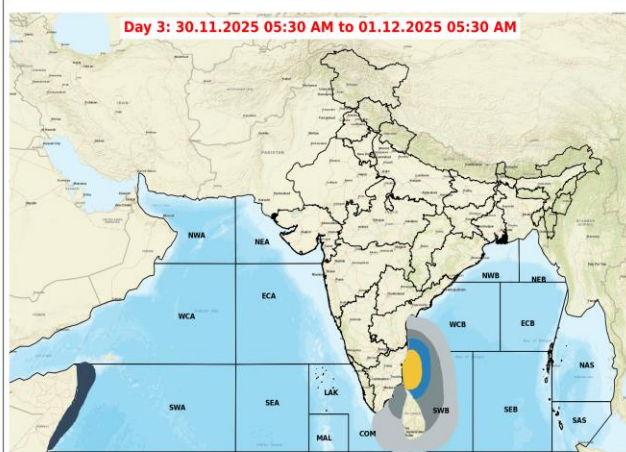
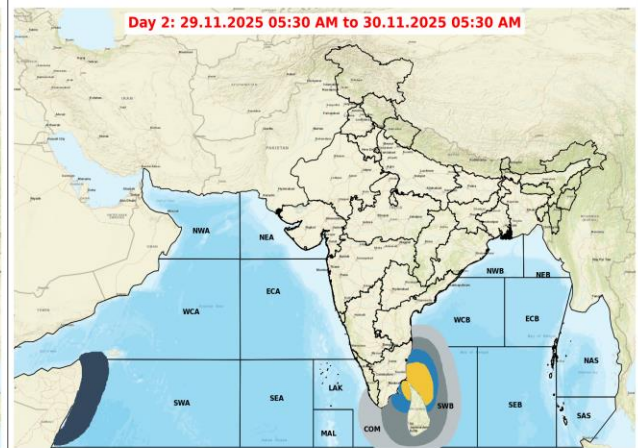
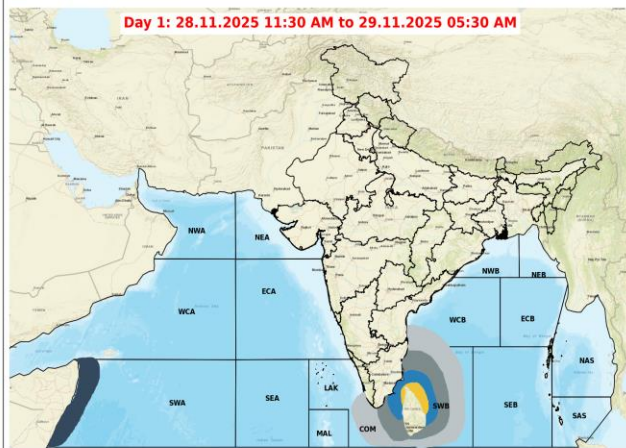
### STORM SURGE HEIGHT INFORMATION:

The below listed surge heights are over and above astronomical tide

MANDAL/TALUK	DISTRICT	STATE / UNION TERRITORY	NEAREST PLACE OF HABITATION	STORM SURGE (m) *	EXPECTED INUNDATION EXTENT (km)
Chengalpattu	Kancheepuram	Tamil Nadu	Muthukadu	0.3-0.5	Upto 0.12
Ponneri	Thiruvallur	Tamil Nadu	Karimanal	0.2-0.4	Upto 0.15



## Fishermen Warning Graphics



### Legend

- |   |   |
|---|---|
| Squally Weather with wind speed 35-45 kmph gusting to 55 kmph | Squally wind with speed 55-65 kmph gusting to 75 kmph       |
| Squally Weather with wind speed 40-50 kmph gusting to 60 kmph | CS with Gale winds with speed 60-80 kmph gusting to 90 kmph |
| Squally Weather with wind speed 45-55 kmph gusting to 65 kmph | SCS with Gale wind speed 90-110 kmph gusting to 120 kmph    |
| Squally wind with speed 45-55 kmph gusting to 65 kmph         | VSCS with Gale wind speed 120-165 kmph gusting to 185 kmph  |
| Squally wind with speed 50-60 kmph gusting to 70 kmph         | ESCS with Gale wind speed 165-220 kmph gusting to 245 kmph  |

Fishermen are advised not to venture into the marked areas.