



**India Meteorological Department  
(Ministry of Earth Sciences)**

**National Bulletin No. 2 (ARB/02/2025 and BoB/07/2025)**

**TIME OF ISSUE: 0200 HOURS IST**

**DATED: 02.10.2025**

**FROM: INDIA METEOROLOGICAL DEPARTMENT (FAX NO. 24643965/24699216/24623220)**

**TO: CONTROL ROOM, NDM, MINISTRY OF HOME AFFAIRS (FAX.NO. 23093750)**

**CONTROL ROOM NDMA (FAX.NO. 26701729)**

**CABINET SECRETARIAT (FAX.NO.23012284, 23018638)**

**PS TO HON'BLE MINISTER FOR S & T AND EARTH SCIENCES (FAX NO.23316745)**

**SECRETARY, MOES (FAX NO. 24629777)**

**H.Q. (INTEGRATED DEFENCE STAFF AND CDS) (FAX NO. 23005137/23005147)**

**D.G. INDIAN COAST GUARD: (FAX No. 011-23383196)**

**DIRECTOR GENERAL, DOORDARSHAN (23385843)**

**DIRECTOR GENERAL, AIR (23421105, 23421219)**

**PIB MOES (FAX NO. 23389042)**

**UNI (FAX NO. 23355841)**

**D.G. NATIONAL DISASTER RESPONSE FORCE (NDRF) (FAX NO. 26105912, 2436 3260)**

**DIRECTOR, PUNCTUALITY, INDIAN RAILWAYS (FAX NO. 23388503)**

**CHIEF SECRETARY, WEST BENGAL (FAX NO. 033-22144328)**

**CHIEF SECRETARY, ODISHA (FAX NO. 0674-2536660)**

**CHIEF SECRETARY, ANDHRA PRADESH (FAX NO. 0863-2441029)**

**CHIEF SECRETARY, TAMIL NADU (FAX NO. 044-25672304)**

**CHIEF SECRETARY, PUDUCHERRY (FAX NO. 0413-2334145)**

**CHIEF SECRETARY, ANDAMAN & NICOBAR ISLANDS (FAX NO. 03192-232656)**

**CHIEF SECRETARY, MADHYA PRADESH (FAX NO. 0755-2441076)**

**CHIEF SECRETARY, CHHATTISGARH (FAX NO. 0771-2221206)**

**CHIEF SECRETARY, JHARKHAND (FAX NO. 040-23453700)**

**CHIEF SECRETARY, BIHAR (FAX NO. 0612-2217085)**

**CHIEF SECRETARY, UTTAR PRADESH (FAX NO. 0522-2239283)**

**CHIEF SECRETARY, GUJARAT (FAX NO. 079-23250305)**

**CHIEF SECRETARY, DAMAN & DIU (FAX NO. 0260-2230775)**

**Subject: (A) Deep Depression over Westcentral and adjoining northwest Bay of Bengal  
and (B) Depression over northeast Arabian Sea**

**(A) Deep Depression over Westcentral and adjoining northwest Bay of Bengal**

The depression over westcentral Bay of Bengal moved north northwestwards with a speed of 10 kmph during last six hours, **intensified into a Deep Depression** and lay centered at 2330 hrs IST of yesterday, the 01<sup>st</sup> October 2025 over westcentral and adjoining northwest Bay of Bengal near latitude 16.8°N and longitude 86.0°E, about 300 km east-southeast of Visakhapatnam (Andhra Pradesh), 300 km south-southeast of Gopalpur (Odisha), 330 km south of Puri (Odisha) and 400 km south of Paradip (Odisha).

It is very likely to continue to move north-northwestwards and cross Odisha and adjoining Andhra Pradesh coasts between Gopalpur and Paradip during the night of 2nd October.

Forecast location and intensity are given in following table:

Date/Time (IST)	Position (Lat. °N/ long. °E)	Maximum sustained surface wind speed (Kmph)	Category of cyclonic disturbance
01.10.25/2330	16.8/86.0	50-60 gusting to 70	Deep Depression
02.10.25/1130	18.2/85.5	55-65 gusting to 75	Deep Depression
02.10.25/2330	19.6/85.1	55-65 gusting to 75	Deep Depression
03.10.25/1130	21.0/84.5	35-45 gusting to 55	Depression

**Warnings:**

**(i) Rainfall Warning:**

**Andhra Pradesh:** Light to moderate rainfall at most places with heavy to very rainfall at isolated places is likely over coastal Andhra Pradesh on 2<sup>nd</sup> October.

**Odisha:** Light to moderate rainfall at most places with heavy to very heavy rainfall at a few places and isolated extremely heavy ( $\geq 20$  cm) rainfall on 2<sup>nd</sup> and isolated heavy to very heavy on 3<sup>rd</sup> October.

**Gangetic West Bengal:** Light to moderate rainfall at most places with heavy to very rainfall at isolated places is very likely on 2<sup>nd</sup> & 3<sup>rd</sup> October. Thereafter rainfall would reduce becoming heavy rainfall at isolated places on 4<sup>th</sup> October.

**Sub-Himalayan West Bengal:** Light to moderate rainfall at most places with heavy to very heavy rainfall at isolated places is very likely on 3<sup>rd</sup> and 4<sup>th</sup> October and heavy rainfall at isolated places is likely on 2<sup>nd</sup> October.

**Jharkhand:** Light to moderate rainfall at many places with heavy rainfall at isolated places is likely on 2<sup>nd</sup> October. Light to moderate rainfall at most places with heavy to very heavy rainfall at isolated places on 3<sup>rd</sup> and heavy rainfall at isolated places on 4<sup>th</sup> October.

**Chhattisgarh:** Light to moderate rainfall at many places with heavy to very heavy rainfall at isolated places is likely on 3<sup>rd</sup> October and heavy rainfall at isolated places on 4<sup>th</sup> October.

**Bihar:** Light to moderate rainfall at many places with heavy rainfall at isolated places on 2<sup>nd</sup> October and heavy to very heavy rainfall at isolated places is likely during 3<sup>rd</sup> - 5<sup>th</sup> October.

**East Uttar Pradesh:** Light to moderate rainfall at many places with heavy rainfall at isolated places is likely on 3<sup>rd</sup> and heavy to very heavy rainfall at isolated places on 4<sup>th</sup> & 5<sup>th</sup> October.

**East Madhya Pradesh:** Light to moderate rainfall at many places with heavy rainfall at isolated places is likely on 3<sup>rd</sup> and 4<sup>th</sup> October.

**(ii) Wind warning:**

- ❖ Squally wind speed reaching 50-60 gusting to 70 kmph is currently prevailing over west central & adjoining northwest Bay of Bengal. It would increase becoming 55-65 gusting to 75 kmph over west central & adjoining northwest Bay of Bengal and along and off Andhra Pradesh-Odisha- West Bengal coasts from forenoon of 02<sup>nd</sup> October till early morning of 3<sup>rd</sup> October and decrease gradually reduce thereafter.

**(iii) Sea condition:**

- ❖ Sea condition is very likely to be rough to very rough over west central & adjoining northwest Bay of Bengal and along & off Andhra Pradesh-Odisha-West Bengal coasts from 2<sup>nd</sup> October morning to 3<sup>rd</sup> October early morning.

**(iv) Fishermen warnings:**

Fishermen are advised not to venture into

- ❖ Westcentral & adjoining northwest Bay of Bengal and along & off Andhra Pradesh-Odisha-West Bengal coasts from 2<sup>nd</sup> morning till 3<sup>rd</sup> October afternoon.
- ❖ Fisherman out at sea are advised to return to coast immediately.

**(v) Impact Expected and Action Suggested due to heavy rain and strong winds (Odisha, North Andhra Pradesh, West Bengal, Chhattisgarh, Jharkhand and Bihar)**

**Impact expected:**

- ❖ Breaking of tree branches. Strong wind and rain may damage plantation, horticulture and standing crops.
- ❖ Minor damage to kutcha houses/walls, huts and roads due to strong winds and heavy rain.
- ❖ Road and rail traffic may be affected due to heavy rain.
- ❖ There could be localised landslides, mudslides, landslips, water logging, inundation and flooding over low lying areas.
- ❖ Occasional reduction in visibility due to heavy rainfall.
- ❖ Surface transport and helicopter services may get affected.

**Action suggested:**

- ❖ People are advised to keep a watch on the weather for worsening conditions and be ready to move to safer places accordingly.
- ❖ Take safe shelters; do not take shelter under trees, as there could be lightning.
- ❖ In case of expected lightning, unplug electrical/ electronic appliances, immediately, get out of water bodies and keep away from all the objects that conduct electricity.
- ❖ Tourism and recreational activities to be regulated.
- ❖ Surface transport and helicopter services to be regulated.
- ❖ Drive with caution on wet roads.
- ❖ Onshore and offshore activities to be cautious.

**(B) Depression over northeast Arabian Sea**

The Depression over northeast Arabian Sea moved south-southwestwards at a speed of 10 Kmph during the last six hours and lay centered at 2330 hours IST of yesterday, the 01st October, 2025 over northeast Arabian Sea near latitude 21.5°N and longitude 68.1°E, about 140 km southwest of Dwarka, 210 km south-southwest of Naliya, 160 km west of Porbandar and 390 km south-southeast of Karachi. It is likely to move west-southwestwards towards northwest Arabian Sea during next 3 days.

**(i) Rainfall warning:**

**Saurashtra & Kutch:** Light to moderate rainfall at many places with heavy rainfall at isolated places is likely over coastal districts on 2<sup>nd</sup> October.

**(ii) Wind warning:**

- ❖ Squally wind speed reaching 40-50 gusting to 60 kmph is very likely to prevail over Northeast Arabian Sea and along & off North Gujarat coast till 3<sup>rd</sup> October and decrease gradually thereafter.
- ❖ Squally wind speed reaching 50-60 gusting to 70 kmph is very likely to prevail over Northeast & adjoining Northwest Arabian Sea during 2<sup>nd</sup> – 3<sup>rd</sup> October and over NW and adjoining NE AS during 4<sup>th</sup> -5<sup>th</sup> October.

**(ii) Sea condition:**

- ❖ Sea condition is very likely to be Rough to very rough over Northeast Arabian Sea & adjoining areas of northwest Arabian Sea and along & off North Gujarat coast & Gulf of Kutch till 3<sup>rd</sup> October and gradually improve thereafter.
- ❖ Sea condition is very likely to be rough to very rough over northwest & adjoining northeast Arabian Sea during 4<sup>th</sup>- 5<sup>th</sup> October.

**(iii) Fishermen warnings:**

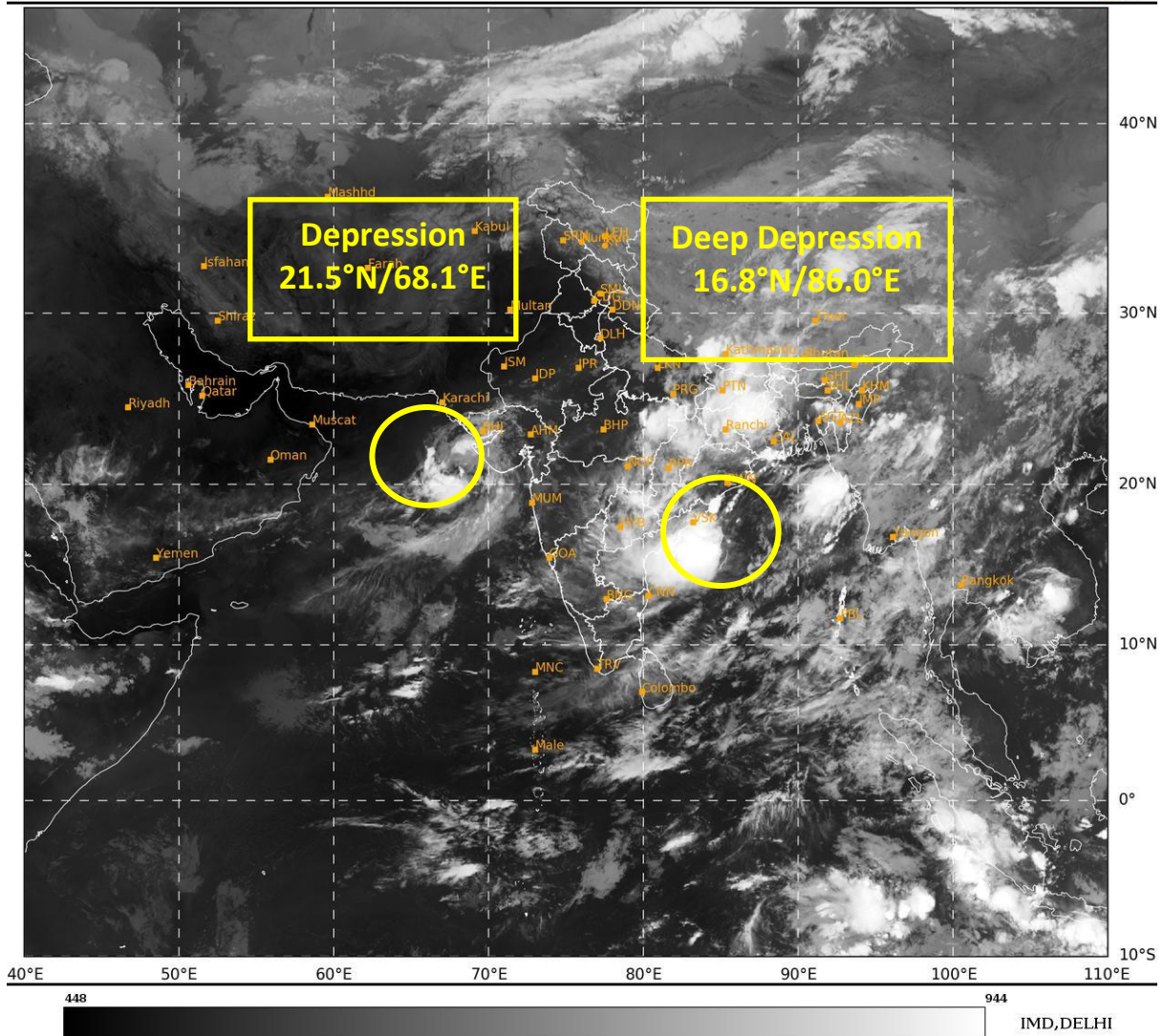
Fishermen are advised not to venture into

- ❖ Northeast Arabian Sea and along & off North Gujarat coast and Gulf of Kutch till 3<sup>rd</sup> October
- ❖ Northwest Arabian Sea during 2<sup>nd</sup> – 5<sup>th</sup> October.

**Next Message will be issued at 0830 hrs IST of the 2<sup>nd</sup> October, 2025.**

**(Shibin Balakrishnan)**  
**Scientist-D, RSMC & IMD, New Delhi**

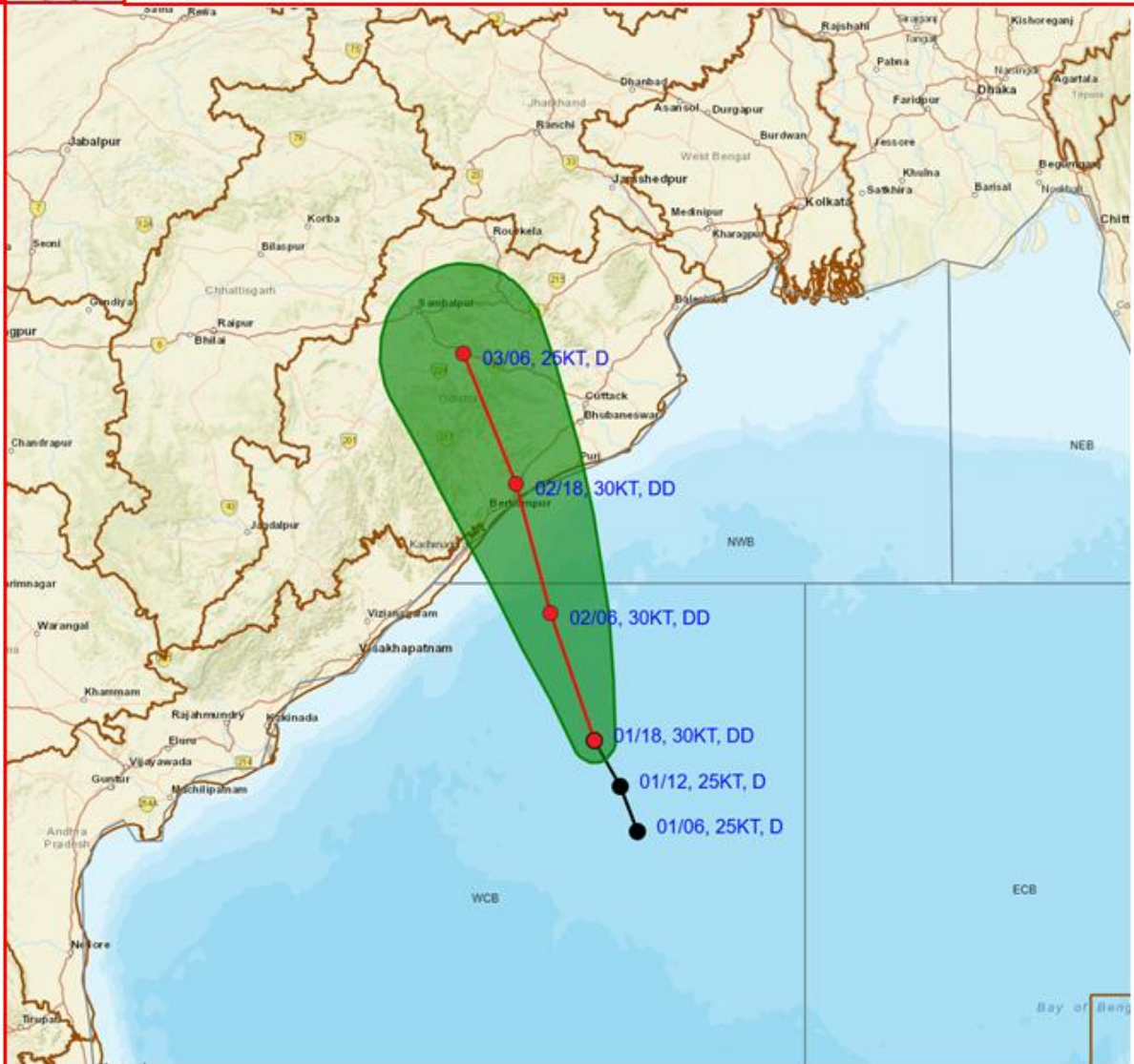
*Copy to: ACWC Kolkata/ACWC Chennai/ACWC Mumbai/CWC Bhubaneswar/CWC Vishakhapatnam/Meteorological Centres- Port Blair/Hyderabad/Bhopal/Ahmedabad/Raipur/Amravati/*







# **OBSERVED AND FORECAST TRACK OF DEEP DEPRESSION OVER WESTCENTRAL BAY OF BENGAL BASED ON 1800 UTC (2330 IST) OF 1<sup>ST</sup> OCTOBER, 2025**



**DATE/TIME IN UTC**

**1 KT = 1.85 KMPH**

**IST = UTC + 0530**

**L: LOW PRESSURE AREA**

**WML: WELL MARKED LOW PRESSURE AREA**

**D: DEPRESSION (17-27 KT)**

**DD: DEEP DEPRESSION (28-33 KT)**

**CS: CYCLONIC STORM (34-47 KT)**

**SCS: SEVERE CYCLONIC STORM (48-63 KT)**

**VSCS: VERY SEVERE CYCLONIC STORM (64-89 KT)**

**ESCS: EXTREMELY SEVERE CYCLONIC STORM (90-119 KT)**

**SuCS: SUPER CYCLONIC STORM  $\geq 120$  KT**

**● LESS THAN 34 KT**

**⬮ 34-47 KT**

**⬮  $\geq 48$  KT**

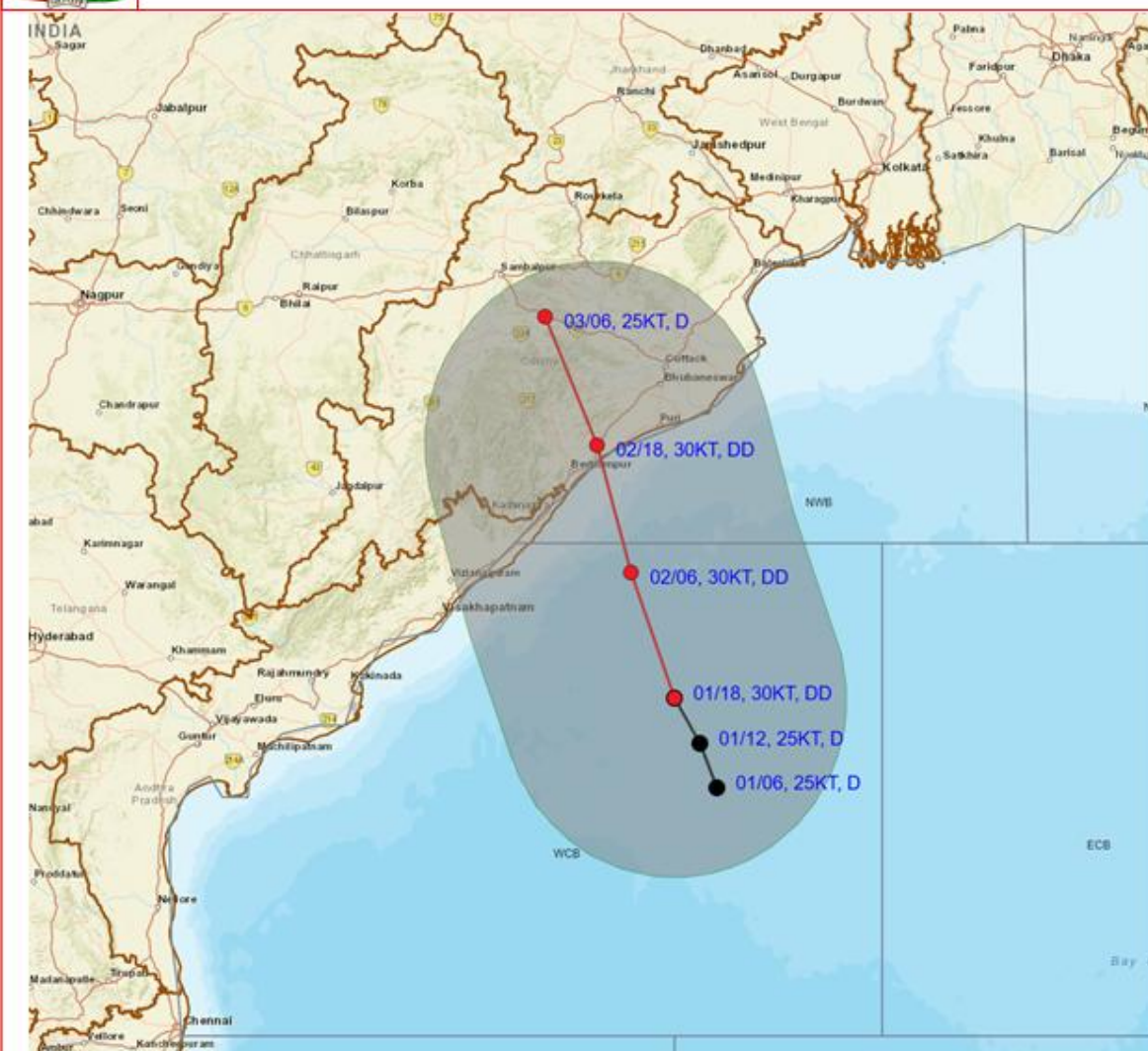
**— OBSERVED TRACK**

**— FORECAST TRACK**

**▲ CONE OF UNCERTAINTY**



# **OBSERVED AND FORECAST TRACK ALONGWITH QUADRANT WIND DISTRIBUTION OF DEEP DEPRESSION OVER WESTCENTRAL BAY OF BENGAL BASED ON 1800 UTC (2330 IST) OF 1<sup>ST</sup> OCTOBER, 2025**



DATE/TIME : IN UTC  
 IST : UTC + 0530  
 KT : NAUTICAL MILE/HOUR = 1.85 KM/HOUR  
 LPA : LOW PRESSURE AREA  
 WML : WELL MARKED LOW PRESSURE AREA  
 D : DEPRESSION (17-27 KT)  
 DD : DEEP DEPRESSION (28-33 KT)  
 CS : CYCLONIC STORM (34-47 KT)  
 SCS : SEVERE CYCLONIC STORM (48-63 KT)  
 VSCS : VERY SEVERE CYCLONIC STORM (64-89 KT)  
 ESCS : EXTREMELY SEVERE CYCLONIC STORM (90-119 KT)  
 SuCS : SUPER CYCLONIC STORM (≥120 KT)

● LESS THAN 34 KT  
 ⚡ 34-47 KT  
 ⚡ ≥ 48 KT  
 — OBSERVED TRACK  
 — FORECAST TRACK  
 — CONE OF UNCERTAINTY  
 AREA OF MAXIMUM SUSTAINED WIND SPEED:  
 ■ 28-33 KT (52-61 KMPH)  
 ■ 34-49 KT (62-91 KMPH)  
 ■ 50-63 KT (92-117 KMPH)  
 ■ ≥ 64 KT (≥118 KMPH)

## **IMPACT OVER THE SEA**

MSW (knot/kmph)	Impact	Action
28-33 (52-61)	Very rough seas	Total suspension of fishing operations
34-49 (62-91)	High to very high seas	Total suspension of fishing operations
50-63 (92-117)	Very high seas	Total suspension of fishing operations
≥ 64 (≥118)	Phenomenal	Total suspension of fishing operations





**OBSERVED AND FORECAST TRACK OF DEPRESSION OVER NORTHEAST  
ARABIAN SEA BASED ON 1800 UTC (2330 IST) OF 1<sup>ST</sup> OCTOBER, 2025**



**DATE/TIME IN UTC**

**IST = UTC + 0530**

**L: LOW PRESSURE AREA**

**WML: WELL MARKED LOW PRESSURE AREA**

**D: DEPRESSION (17-27 KT)**

**DD: DEEP DEPRESSION (28-33 KT)**

**CS: CYCLONIC STORM (34-47 KT)**

**SCS: SEVERE CYCLONIC STORM (48-63 KT)**

**VSCS: VERY SEVERE CYCLONIC STORM (64-89 KT)**

**ESCS: EXTREMELY SEVERE CYCLONIC STORM (90-119 KT)**

**SuCS: SUPER CYCLONIC STORM  $\geq 120$  KT**

**1 KT = 1.85 KMPH**



**LESS THAN 34 KT**



**34-47 KT**



**$\geq 48$  KT**



**OBSERVED TRACK**



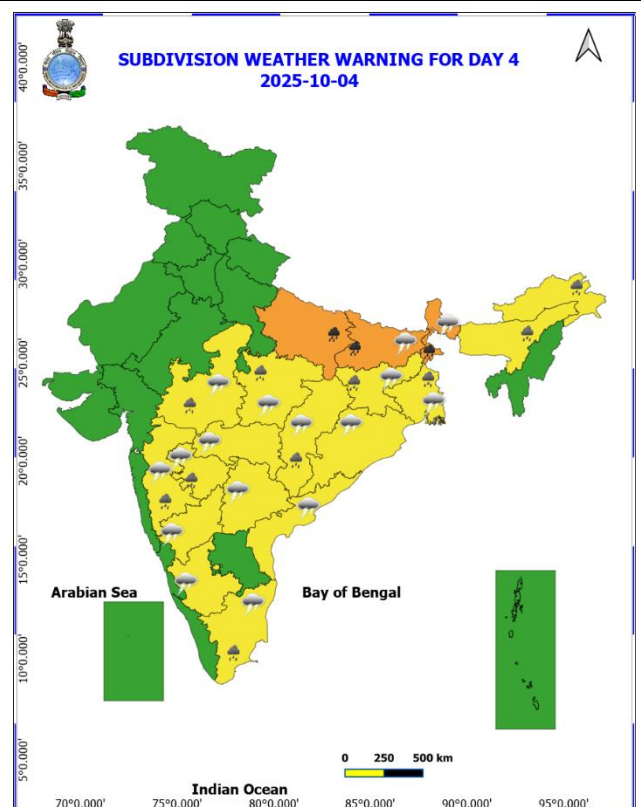
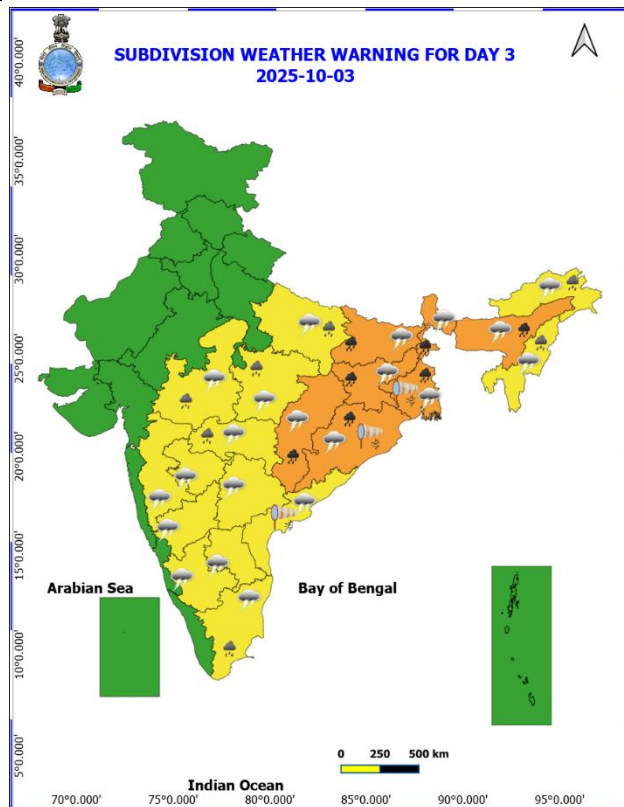
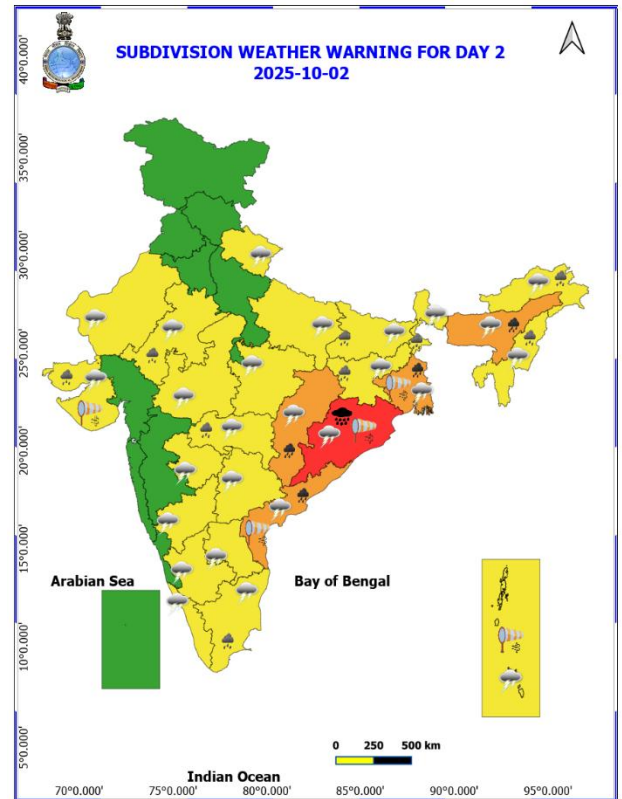
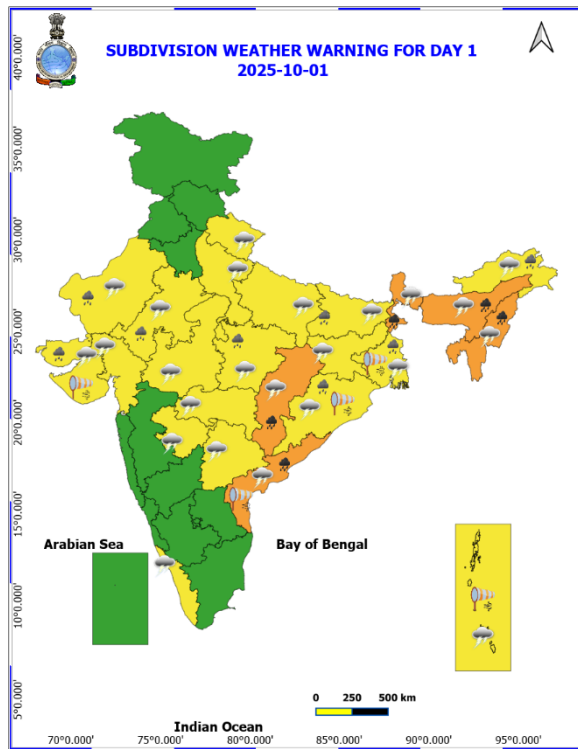
**FORECAST TRACK**

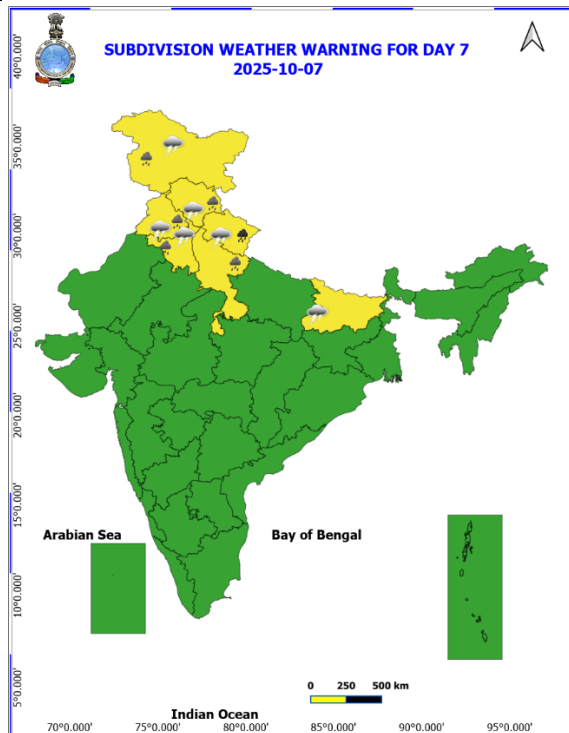
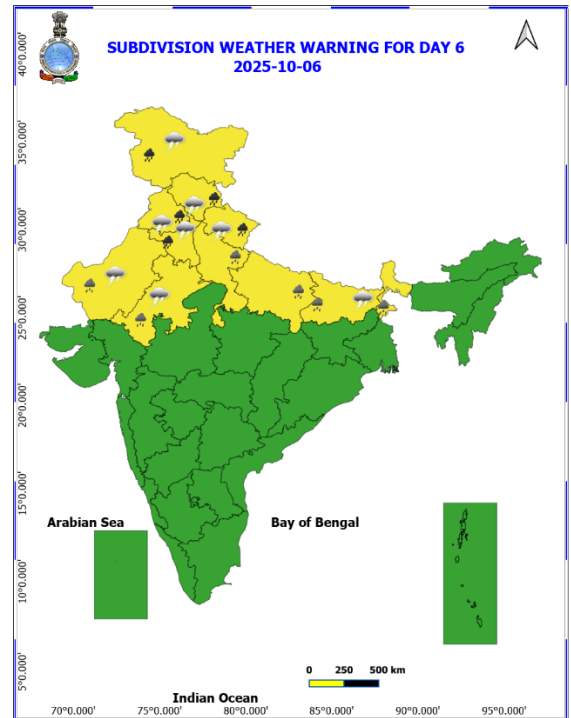
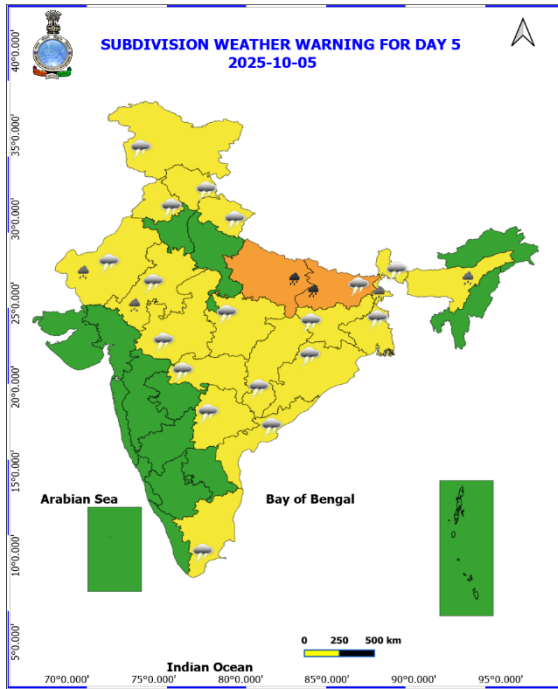


**CONE OF UNCERTAINTY**



## Weather Warning Graphics





**COLOUR CODED WARNING**

No Warning (No Action)
Watch (Be Aware)
Alert (Be Prepared To Take Action)
Warning (Take Action)

**Probabilistic Forecast**

Terms	Probability of Occurrence
Unlikely	< 25
Likely	25 - 50
Very Likely	50 - 75
Most Likely	> 75

**Weather Warnings Legend:**

- Fog
- Heavy Rain
- Very Heavy Rain
- Extremely Heavy Rain
- Thunder & Lightning
- Hailstorm
- Dust Raising Winds
- Heavy Snow
- Dust Storm
- Heat Wave
- Warm Night
- Hot Day
- Hot & Humid
- Strong Surface Winds
- Cold Wave
- Cold Day
- Ground Frost

\* Red colour warning does not mean "Red Alert", Red colour warning means "Take Action".  
Forecast and Warning for any day is valid from 0630 hours IST of day till 0630 hours IST of next day.  
For more details, kindly visit <https://mausam.imd.gov.in> or contact: 011-2434-4599  
(Service to the Nation since 1875)

## Fishermen Warning Graphics

