



**India Meteorological Department  
(Ministry of Earth Sciences)**

**BULLETIN NUMBER: 01 (BOB/05/2021)**

**TIME OF ISSUE:2000 HOURS IST**

**DATED: 10.11.2021**

**FROM: INDIA METEOROLOGICAL DEPARTMENT (FAX NO. 24643965/24699216/24623220)**

**TO: CONTROL ROOM, NDM, MINISTRY OF HOME AFFAIRS (FAX.NO. 23093750)  
CONTROL ROOM NDMA (FAX.NO. 26701729)  
CABINET SECRETARIAT (FAX.NO.23012284, 23018638)  
PS TO HON'BLE MINISTER FOR S & T AND EARTH SCIENCES (FAX NO.23316745)  
SECRETARY, MOES (FAX NO. 24629777)  
H.Q. (INTEGRATED DEFENCE STAFF AND CDS) (FAX NO. 23005137/23005147)  
DIRECTOR GENERAL, DOORDARSHAN (23385843)  
DIRECTOR GENERAL, AIR (23421105, 23421219)  
PIB MOES (FAX NO. 23389042)  
UNI (FAX NO. 23355841)  
D.G. NATIONAL DISASTER RESPONSE FORCE (NDRF) (FAX NO. 26105912, 2436 3260)  
DIRECTOR, PUNCTUALITY, INDIAN RAILWAYS (FAX NO. 23388503)  
CHIEF SECRETARY, ANDHRA PRADESH (FAX NO. 0863-2441029, 08645-246600)  
CHIEF SECRETARY, TAMIL NADU (FAX NO 044-25672304)  
CHIEF SECRETARY, PUDUCHERRY (FAX NO 0413-2334145)  
CHIEF SECRETARY, KERALA (FAX NO 0471-2327176)  
ADMINISTRATOR, KARNATAKA (FAX NO 080-22258913)  
CHIEF SECRETARY, ANDAMAN & NICOBAR ISLANDS (FAX NO. 03192- 232656)**

**Sub: Depression over southwest Bay of Bengal.**

The Well Marked Low Pressure Area over central parts of south Bay of Bengal moved west-northwestwards, concentrated into a Depression and lay centred at 1730 hrs IST of 10<sup>th</sup> November 2021, over Southwest Bay of Bengal, near Lat. 10.6°N and Long. 83.4°E, about 430 km east-southeast of Chennai & 420 km east-southeast of Puducherry. It is very likely to move west–northwestwards and reach near north Tamilnadu coast by the early morning of 11<sup>th</sup> November, 2021. Thereafter, it is likely to continue to move west-northwestwards and cross north Tamil Nadu & adjoining south Andhra Pradesh coasts between Karaikal & Sriharikota close to the north of Puducherry by the evening of 11<sup>th</sup> November 2021.

Forecast track and intensity are given in the following table:

<b>Date/Time(IST)</b>	<b>Position (Lat. °N/ long. °E)</b>	<b>Maximum sustained surface wind speed (Kmph)</b>	<b>Category of cyclonic disturbance</b>
10.11.21/1730	10.6/83.4	45-55 gusting to 65	Depression
11.11.21/0530	11.7/81.6	45-55 gusting to 65	Depression
11.11.21/1730	12.2/80.0	45-55 gusting to 65	Depression

## Warnings:

### (i) Rainfall (warning graphics enclosed)

**10<sup>th</sup> Nov.:** Light to moderate rainfall at most places with **heavy to very heavy rainfall at a few places & extremely heavy falls at isolated places** very likely over north coastal Tamil Nadu, Puducherry, north interior Tamil Nadu and south coastal Andhra Pradesh and heavy to very heavy rainfall at isolated places over Rayalaseema.

**11<sup>th</sup> Nov.:** Light to moderate rainfall at most places **with heavy to very heavy rainfall at a few places & extremely heavy falls at isolated places** very likely over north coastal Tamil Nadu, Puducherry, north interior Tamil Nadu, south coastal Andhra Pradesh and Rayalaseema and heavy rainfall at isolated places over south interior Karnataka.

### (ii) Wind warning

- Squally wind speed reaching 45-55 kmph gusting to 65 kmph likely to prevail over southwest & adjoining westcentral Bay of Bengal and along & off Tamil Nadu, Puducherry & south Andhra Pradesh coasts during 10<sup>th</sup> – 11<sup>th</sup> November.

### (iii) Sea condition

- Sea condition will be rough to very rough over southwest & adjoining west-central Bay of Bengal and along & off Tamil Nadu, Puducherry & south Andhra Pradesh coasts during 10<sup>th</sup> – 11<sup>th</sup> November.

### (iv) Fishermen Warning

- Fishermen are advised not to venture into southwest & adjoining west-central Bay of Bengal and along & off Tamil Nadu, Puducherry & south Andhra Pradesh coasts during 10<sup>th</sup> – 11<sup>th</sup> November (Graphics enclosed).

## (v) EXPECTED IMPACT & ACTION SUGGESTED

### A. Impact Expected

- Localized Flooding of roads, inundation and water logging in low lying areas and closure of underpasses mainly in urban areas of the above region.
- Occasional reduction in visibility due to heavy rainfall.
- Disruption of traffic in major cities due to water logging in roads leading to increased travel time.
- Minor damage to kutcha roads.
- Possibilities of damage to vulnerable structure.
- Localized Landslides/Mudslides
- Damage to horticulture and standing crops in some areas due to squally wind and inundation.
- It may lead to riverine flooding in some river catchments (for riverine flooding please visit Web page of CWC)

### B. Action Suggested

- Check for traffic congestion on your route before leaving for your destination.
- Follow any traffic advisories that are issued in this regard.
- Avoid going to areas that face the water logging problems often.
- Avoid staying in vulnerable structure.

**(Sunitha Devi. S)**  
**Scientist-F, RSMC, New Delhi**

*Copy to: ACWC Mumbai/ CWC Ahmedabadr/MC Goa/CWC Thiruvanathapuram*

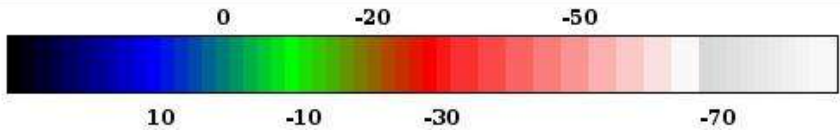
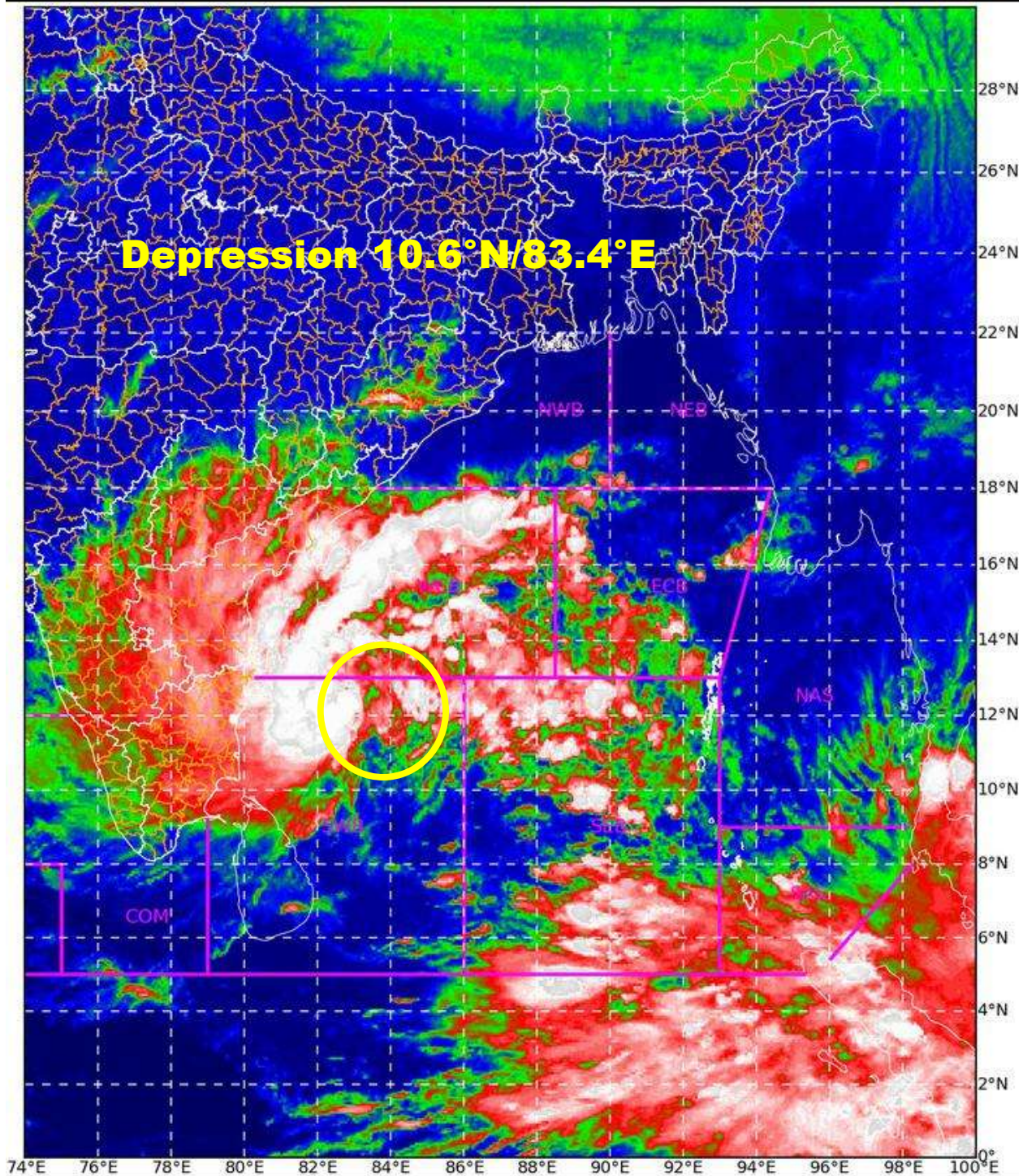
**LEGEND: Heavy Rainfall:** 64.5 to 115.5mm, **Very Heavy Rainfall:** 115.6 to 204.4mm **Most Places:** more than 76% of total stations, **Isolated Places:** Less than 25% of total stations



SAT : INSAT-3D IMG 10-11-2021/(1230 to 1256) GMT

IMG\_TIR1\_TEMP 10.8 um 10-11-2021/(1800 to 1826) IST

L1C Mercator

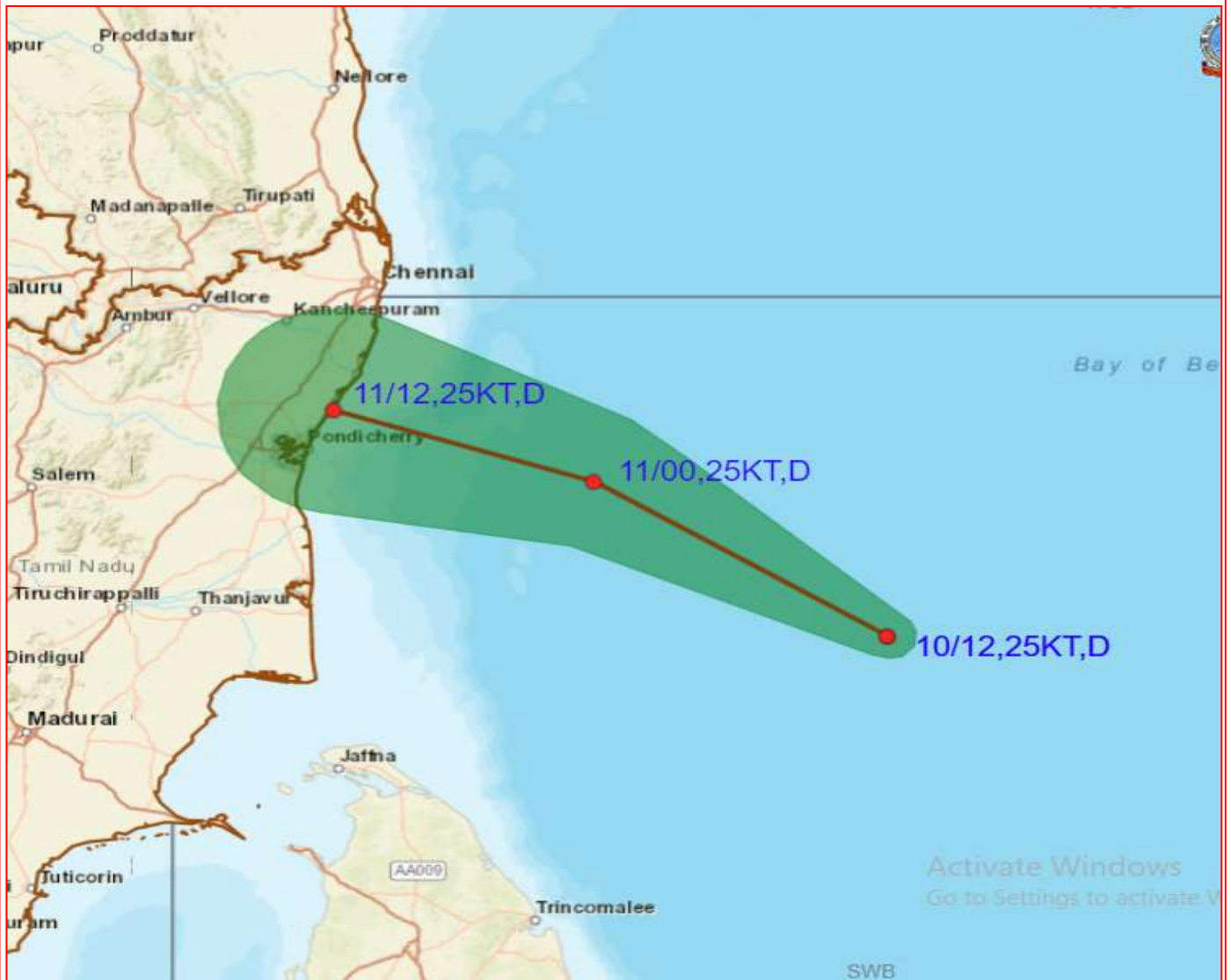


Celsius  
IMD, DELHI





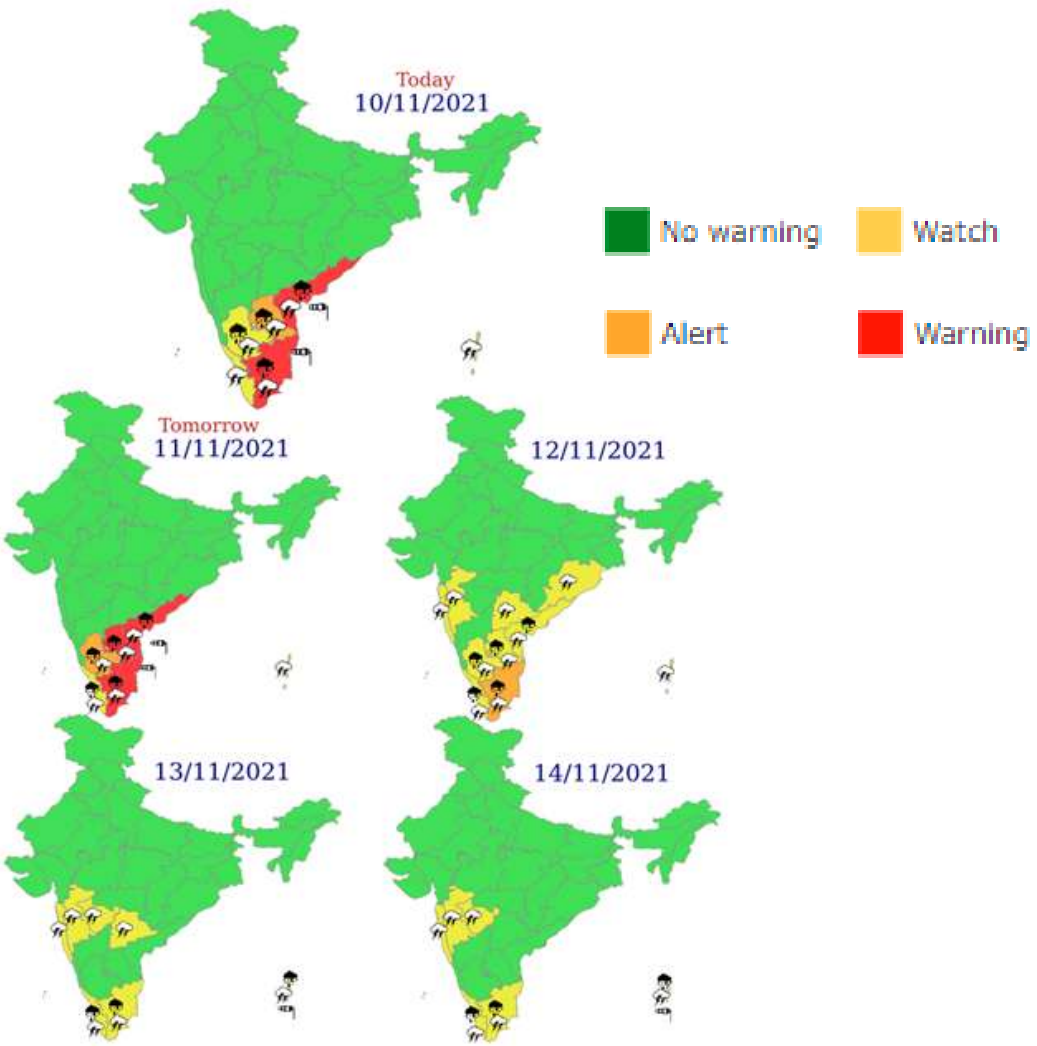
# OBSERVED AND FORECAST TRACK ALONGWITH CONE OF UNCERTAINTY OF DEPRESSION OVER SOUTHWEST BAY OF BENGAL BASED ON 1200 UTC OF 10<sup>TH</sup> NOVEMBER, 2021



DATE/TIME IN UTC  
IST=UTC + 0530  
L: LOW PRESSURE AREA  
WML: WELL MARKED LOW PRESSURE AREA  
D: DEPRESSION (17-27 KT)  
DD: DEEP DEPRESSION (28-33 KT)  
CS: CYCLONIC STORM (34-47 KT)  
SCS: SEVERE CYCLONIC STORM (48-63KT)  
VSCS: VERY SEVERE CYCLONIC STORM (64-89 KT)  
ECS: EXTREMELY SEVERE CYCLONIC STORM (90-119 KT)  
SuCS: SUPER CYCLONIC STORM ( $\geq 20$  KT)

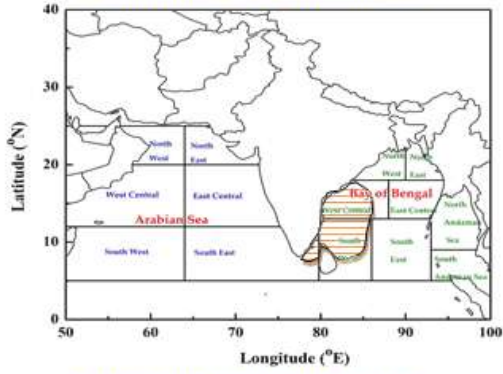
- LESS THAN 34 KT
- 34-47 KT
- $\geq 48$  KT
- OBSERVED TRACK
- FORECAST TRACK
- CONE OF UNCERTAINTY

# Meteorological Sub-division level heavy rainfall warning

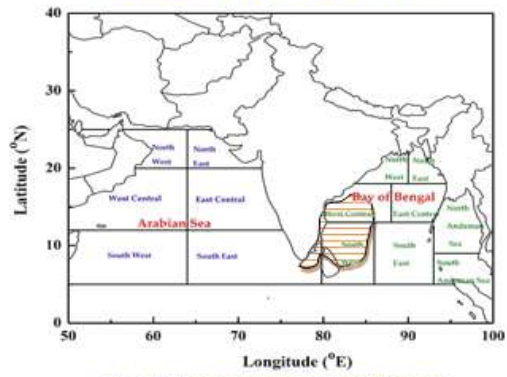


**INDIA METEOROLOGICAL DEPARTMENT  
FISHERMAN WARNING FOR BAY OF BENGAL AND ARABIAN SEA**

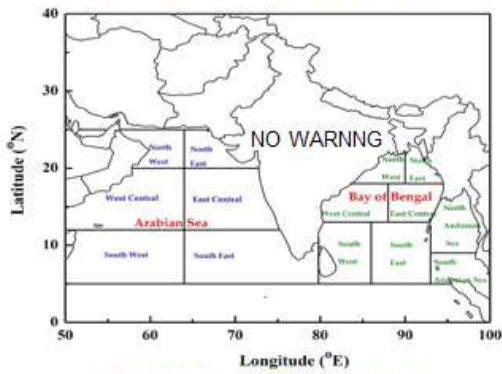
DAY-1: 10.11.2021/0600 UTC TO 11.11.2021/0600 UTC



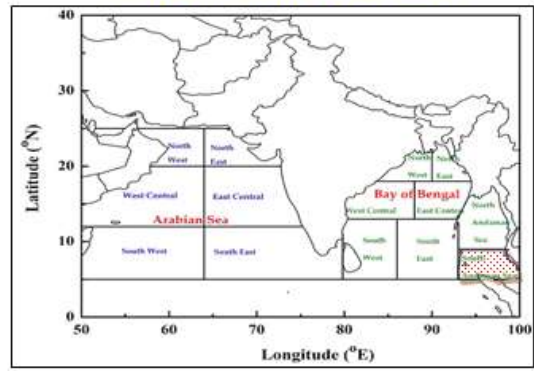
DAY-2: 11.11.2021/0600 UTC TO 12.11.2021/0600 UTC



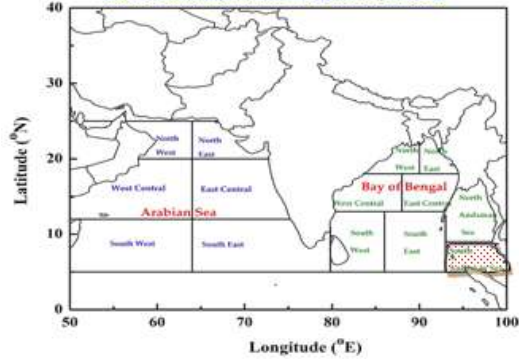
DAY-3: 12.11.2021/0600 UTC TO 13.11.2021/0600 UTC



DAY-4: 13.11.2021/0600 UTC TO 14.11.2021/0600 UTC



DAY-5: 14.11.2021/0600 UTC TO 15.11.2021/0600 UTC



**AREA UNDER FISHERMEN WARNING**

- 40-50 KMPH GUSTING TO 60 KMPH (SQUALLY WEATHER)
- 45-55 KMPH GUSTING TO 60 KMPH (SQUALLY WEATHER)
- 50-60 KMPH GUSTING TO 70 KMPH (STRONG WIND)