



**India Meteorological Department
(Ministry of Earth Sciences)**

NATIONAL BULLETIN NO. 5 (Land/04/2025)

TIME OF ISSUE: 2110 HOURS IST

DATED: 07.09.2025

FROM: INDIA METEOROLOGICAL DEPARTMENT (FAX NO. 24643965/24699216/24623220)

TO: CONTROL ROOM, NDM, MINISTRY OF HOME AFFAIRS (FAX.NO. 23093750)

CONTROL ROOM NDMA (FAX.NO. 26701729)

CABINET SECRETARIAT (FAX.NO.23012284, 23018638)

PS TO HON'BLE MINISTER FOR S & T AND EARTH SCIENCES (FAX NO.23316745)

SECRETARY, MOES (FAX NO. 24629777)

H.Q. (INTEGRATED DEFENCE STAFF AND CDS) (FAX NO. 23005137/23005147)

DIRECTOR GENERAL, DOORDARSHAN (23385843)

DIRECTOR GENERAL, AIR (23421105, 23421219)

PIB MOES (FAX NO. 23389042)

UNI (FAX NO. 23355841)

D.G. NATIONAL DISASTER RESPONSE FORCE (NDRF) (FAX NO. 26105912, 2436 3260)

DIRECTOR, PUNCTUALITY, INDIAN RAILWAYS (FAX NO. 23388503)

CHIEF SECRETARY, GOVT. OF RAJASTHAN (FAX NO. 0141-2227114)

CHIEF SECRETARY, GOVT. OF GUJARAT (FAX NO. +9179 23250305)

CHIEF SECRETARY, GOVT. OF MAHARASHTRA (FAX NO. +9122 22028594)

CHIEF SECRETARY, DAMAN & DIU (FAX NO. 0260-2230775)

CHIEF SECRETARY, DADRA & NAGAR HAVELI (FAX NO. 0260-2645466)

CHIEF SECRETARY, GOA (FAX NO. 0832-2415201)

Subject: Deep Depression over North Gujarat and adjoining Southwest Rajasthan

The deep depression over North Gujarat and adjoining Southwest Rajasthan moved slowly northwestwards with the speed of 5 kmph during past 6 hours and lay centred at 1730 hrs IST of today, the 07th September, 2025, over the same region near latitude 24.5°N and longitude 71.2°E, about 80 Km north-northwest of Radhanpur (Gujarat), 110 km west-northwest of Deesa (Gujarat), 140 km south of Barmer (Rajasthan), 180 km southeast of Chhor (Pakistan) and 200 km northeast of Bhuj (Gujarat).

It is very likely to move nearly westwards as a deep depression across Kutch and adjoining southwest Rajasthan & Pakistan till 8th afternoon. Thereafter, it will continue to move nearly westwards and weaken gradually into a depression.

Warnings:

(i) Rainfall Warning:

North Gujarat Region and Saurashtra & Kutch: Light to moderate rainfall at most places with **heavy to very heavy rainfall (7-20 cm) at a few places and extremely heavy falls (≥ 21 cm)** at isolated places is very likely on 07th September and heavy to very heavy rainfall at isolated places is very likely on 8th September. Isolated exceptionally heavy rainfall (**≥ 30 cm**) is also very likely on 7th September.

South Gujarat Region: Light to moderate rainfall at most places with **heavy to extremely heavy rainfall at isolated places** at isolated places is very likely on 07th September and heavy rainfall at isolated places is very likely on 8th September.

West Rajasthan: Light to moderate rainfall at most places with **heavy to very heavy rainfall at a few places and extremely heavy falls (≥ 21 cm)** at isolated places is very likely over

southwest Rajasthan on 07th September and heavy to **very heavy rainfall at isolated places is very likely** on 08th September.

East Rajasthan: Light to moderate rainfall at most places with **heavy to very heavy rainfall** at isolated places is very likely over southeast Rajasthan on 07th September and heavy rainfall at isolated places is likely on 08th September.

Coastal Maharashtra: Light to moderate rainfall at most places with **heavy to very heavy rainfall** at isolated places is very likely over North Coastal Maharashtra on 07th September.

Madhya Maharashtra: Light to moderate rainfall at most places with **heavy rainfall** at isolated places is very likely on 07th September.

(ii) Wind Warnings:

- Squally weather with wind speed reaching 50-60 kmph gusting to 70 kmph is likely to prevail over northeast & adjoining eastcentral Arabian Sea and along & off Gujarat and North Konkan coasts till 9th September 2025 and decrease thereafter.
- Squally wind speed reaching 45-55 kmph gusting to 65 kmph is likely over southwest Rajasthan and Gujarat state on 7th & 8th September and decrease thereafter.

(iii) Sea condition: Sea condition is likely to be rough to very rough over northeast and adjoining eastcentral Arabian Sea and along & off Gujarat and North Konkan coasts till 9th September 2025.

(iv) Warning:

- Fishermen are advised not to venture into northeast and adjoining eastcentral Arabian Sea and along & off Gujarat and North Konkan coasts till 9th September 2025.
- Small ships/shipping activities are to be monitored and regulated till 9th September 2025.
- Judicious regulation of tourism, recreational and onshore/off shore operations till 9th September.

(v) Impact Expected and Action Suggested due to very heavy/extremely heavy rainfall and squally winds over south Rajasthan and Gujarat state

Impact expected:

- ❖ Heavy rainfall may damage plantation, horticulture and standing crops.
- ❖ Partial damage to vulnerable structures due to heavy rain.
- ❖ Minor damage to kutcha houses/walls, huts and roads due to heavy rain.
- ❖ Road and rail traffic may be affected due to heavy rain.
- ❖ There could be localised landslides, mudslides, landslips in the hilly areas and water logging, inundation and flooding over low lying areas.
- ❖ Occasional reduction in visibility due to heavy rainfall.
- ❖ Helicopter services may get affected.

Action suggested:

- ❖ People are advised to keep a watch on the weather for worsening conditions and be ready to move to safer places accordingly.
- ❖ Take safe shelters; do not take shelter under trees, as there could be lightning.
- ❖ In case of expected lightning, unplug electrical/ electronic appliances, immediately, get out of water bodies and keep away from all the objects that conduct electricity.
- ❖ Tourism and recreational activities to be regulated.
- ❖ Helicopter services to be regulated.
- ❖ Avoid moving into vulnerable areas, as the surface transport and vehicular movement may be affected due to rain and wind

Significant rainfall recorded at 1730 hrs IST of today, accumulated from 0830 hrs IST is given in Annexure -I.

Next bulletin will be issued at 0230 hrs IST of tomorrow, the 08th September, 2025.

(DR Pattanaik)

Scientist-G, IMD, New Delhi

Copy to: Regional Meteorological Centres- Mumbai, Meteorological Centres Ahmedabad, Jaipur.

Accumulated realised rainfall in cm from 0830 to 1730 hours IST of 7th September (≥ 7 cm)

GUJARAT REGION

Banaskantha 28, Tapi 11, Valsad 11, Patan 9, Navsari & Gandhinagar 8 each, Sabarkantha & Dang 6 each, Aravalli, Kutch & Surati 5 each, Morbi & Ahmedabad 4 each, Gandhinagar (Gandhinagar) 3, Baroda AP (Vadodara), Surendranagar (Surendranagar) 2 Each;

SAURASHTRA & KUTCH

Daman (Daman) 2;

RAJASTHAN

Mt. Abu (Sirohi) 16, Jaswatpura (Jalore) 5, Pratapgarh (Pratapgarh) 4, Gudhamalani (Barmer) 3, Shergarh (Jodhpur) 2



**OBSERVED AND FORECAST TRACK OF DEEP DEPRESSION OVER
NORTH GUJARAT AND ADJOINING SOUTH WEST RAJASTHAN BASED
ON 1200 UTC (1730 IST) OF 07th SEP, 2025.**



DATE/TIME IN UTC

IST=UTC + 0530

L: LOW PRESSURE AREA

WML: WELL MARKED LOW PRESSURE AREA

D: DEPRESSION (17-27 KT)

DD: DEEP DEPRESSION (28-33 KT)

CS: CYCLONIC STORM (34-47 KT)

SCS: SEVERE CYCLONIC STORM (48-63KT)

VSCS: VERY SEVERE CYCLONIC STORM (64-89 KT)

ESCS: EXTREMELY SEVERE CYCLONIC STORM (90-119 KT)

SuCS: SUPER CYCLONIC STORM (≥ 120 KT)

LESS THAN 34 KT

34-47 KT

≥ 48 KT

OBSERVED TRACK

FORECAST TRACK

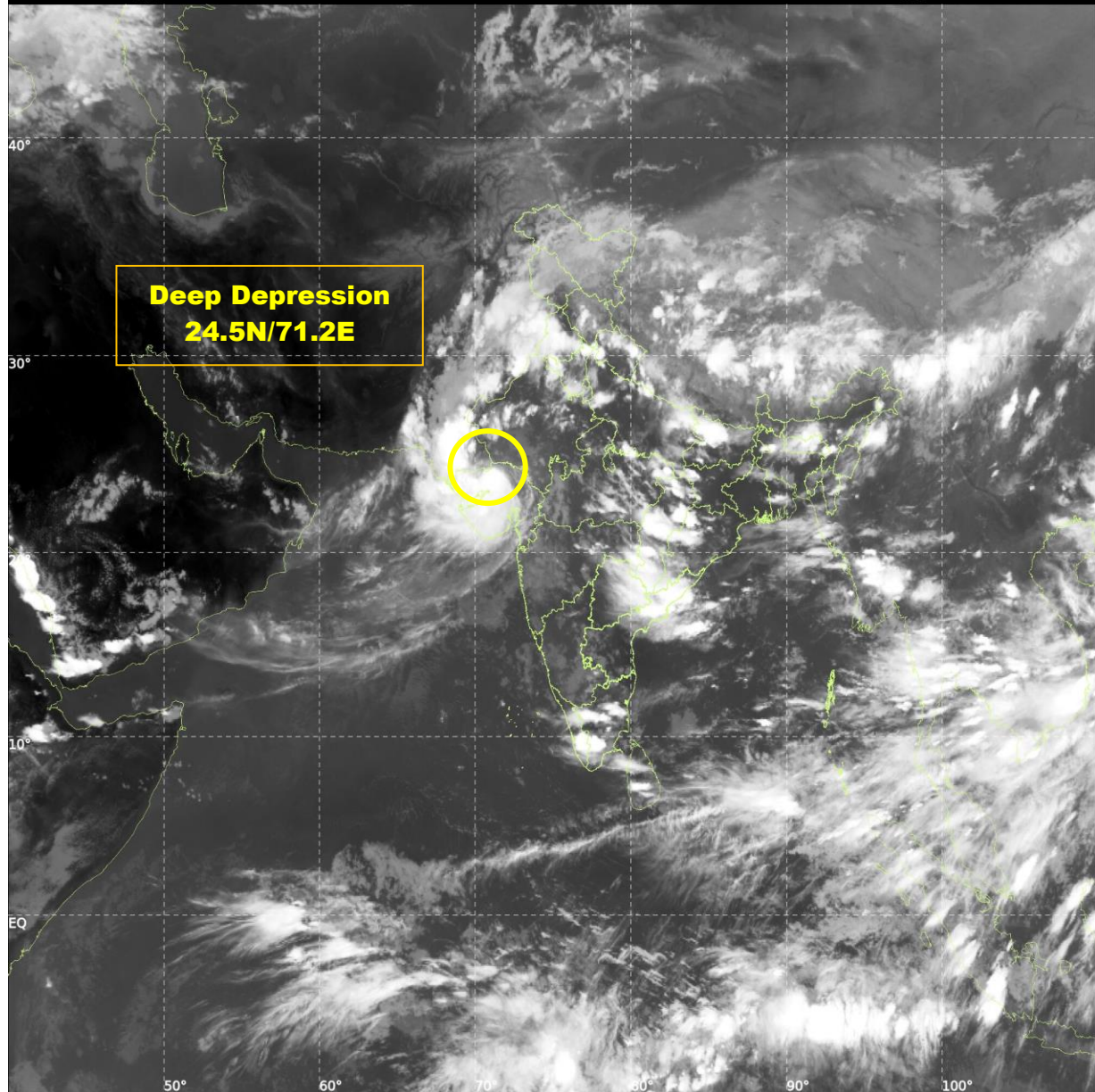
CONE OF UNCERTAINTY



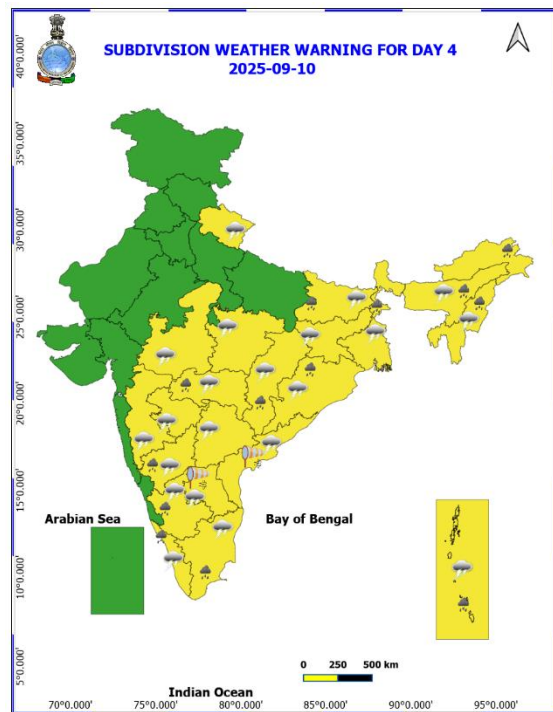
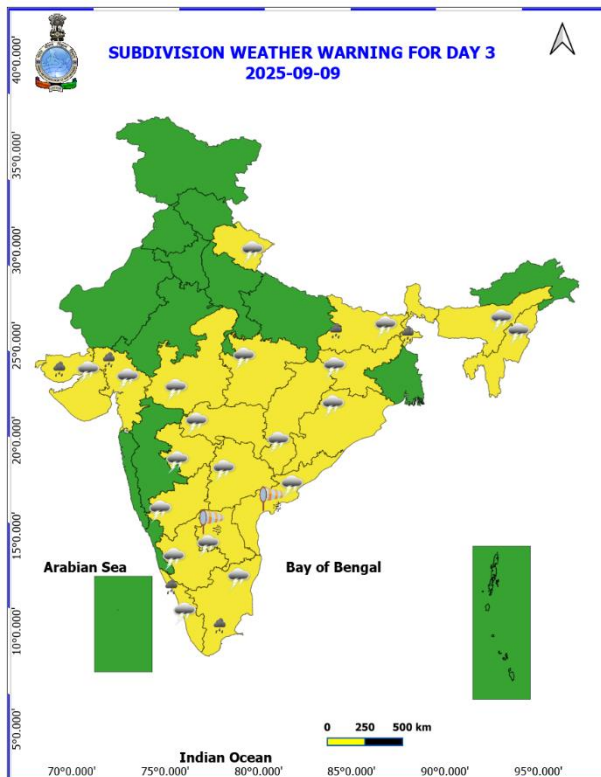
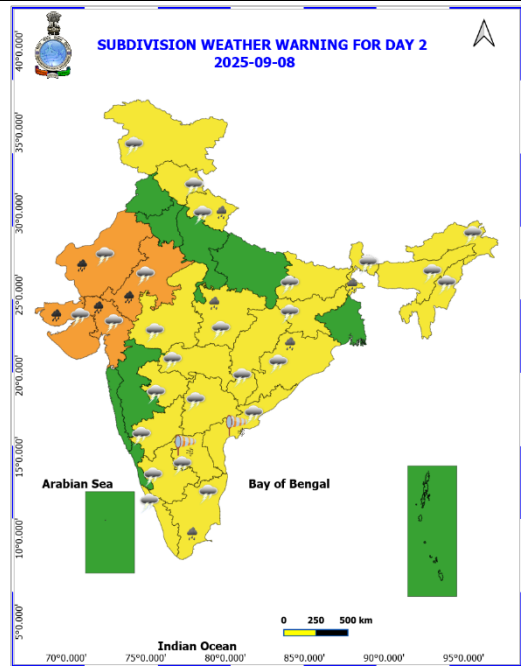
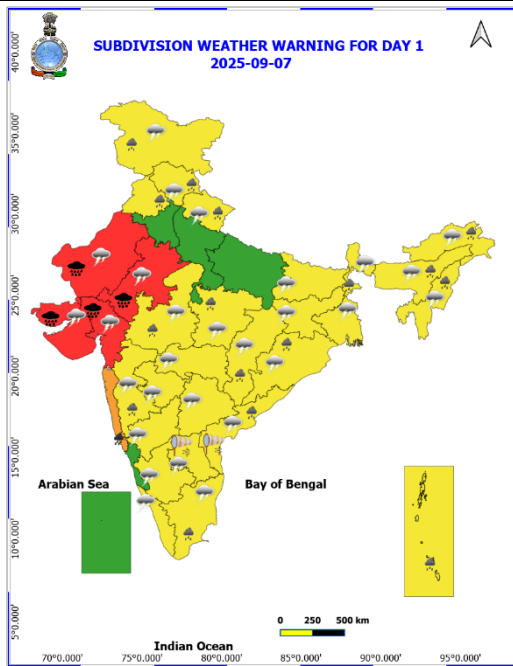
INSAT-3DS IMG, Thermal Infrared1 Count @ 10.83 μm
GMT:07-09-2025/(1300-1327) IST:07-09-2025/(1830-1857)
L1C MERCATOR (LINEAR STRETCH: 1%)

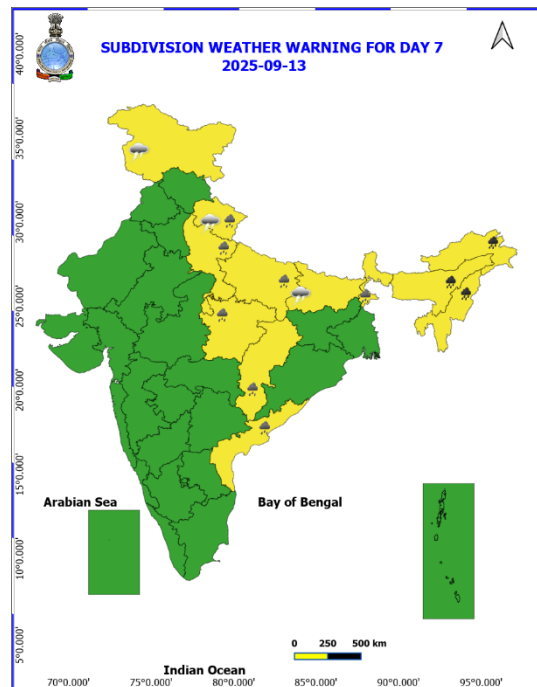
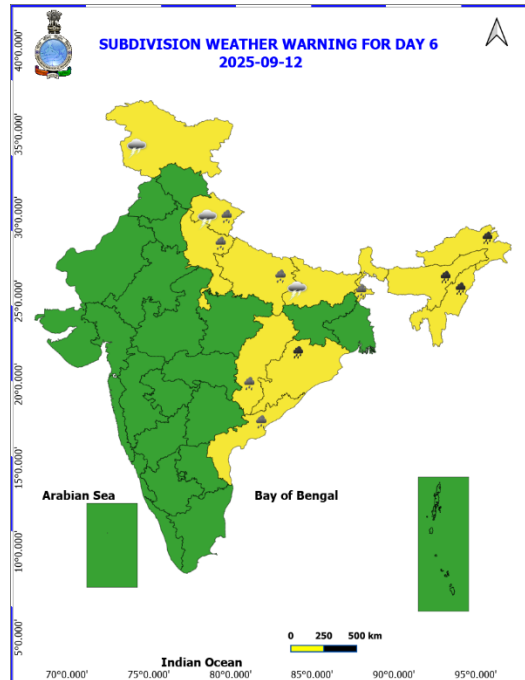
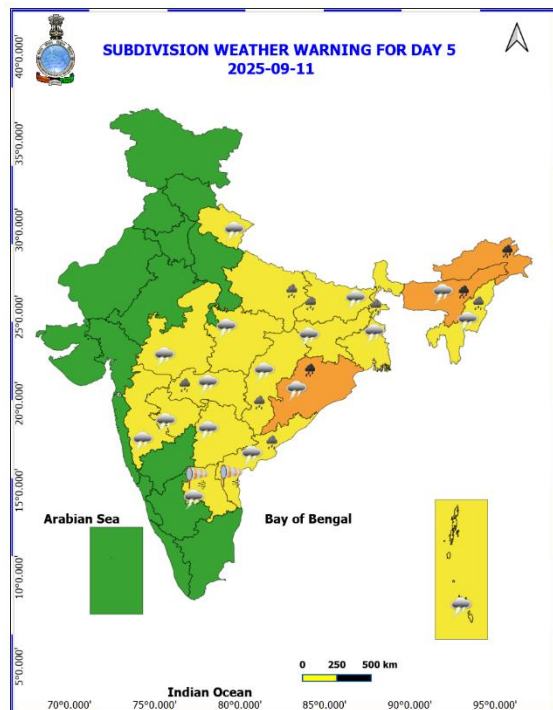
376

914



Warning Graphics



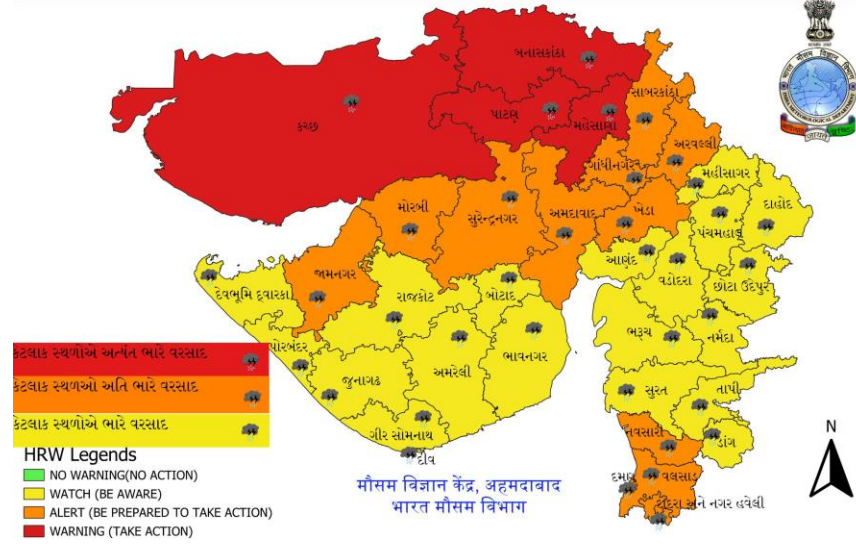


- Action may be taken based on **ORANGE AND RED** COLOUR warnings.
- Vulnerable regions likely urban and hilly areas action may be initiated for heavy rainfall warning.
- As the lead period increases forecast accuracy decreases.

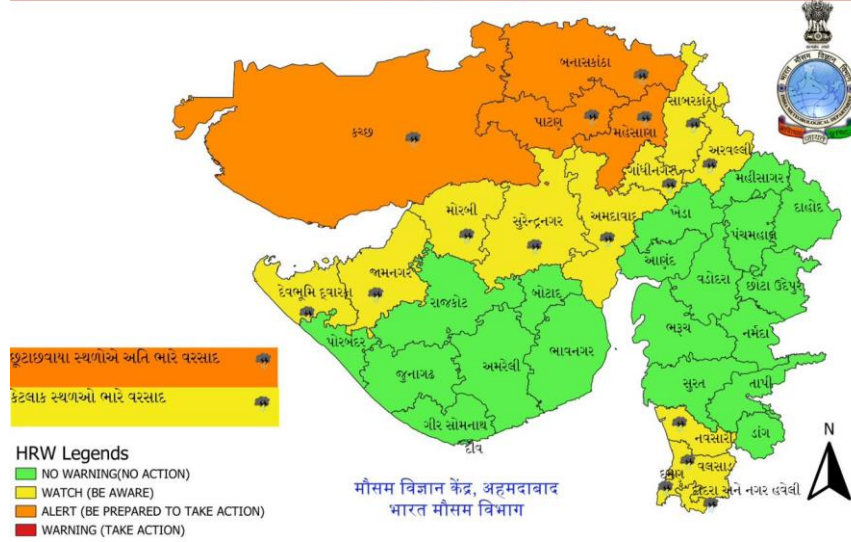
District-wise Rainfall Warning Maps

Gujarat State

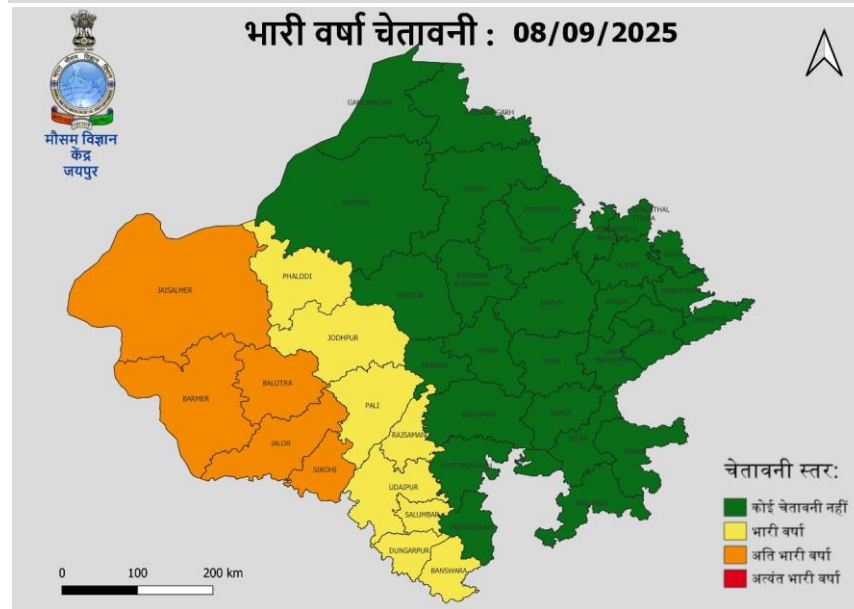
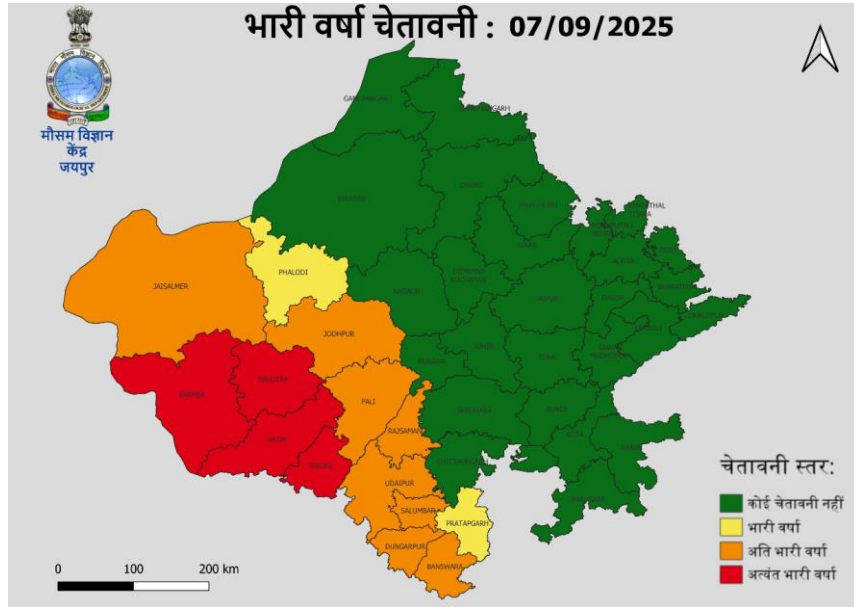
દિવસ -1 ગુજરાત રાજ્ય અને દીવ, દમણ, દાદરા નગર હવેલી ની 07-09-2025 માટે
' ભારે વરસાદ ની ચેતવણી '



દિવસ - 2 ગુજરાત રાજ્ય અને દીવ, દમણ દાદરા નગર હવેલી ની 08-09-2025 માટે
' ભારે વરસાદ ની ચેતવણી '



Rajasthan State

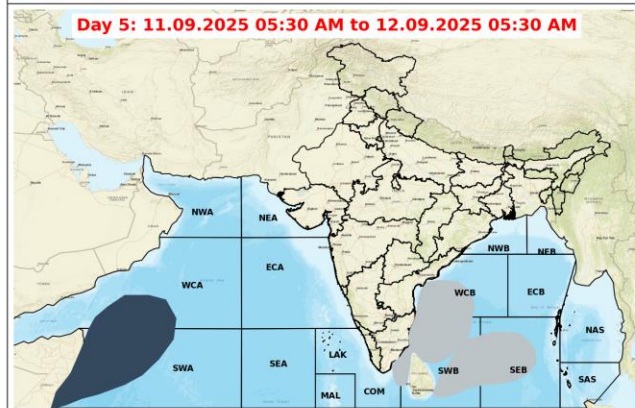
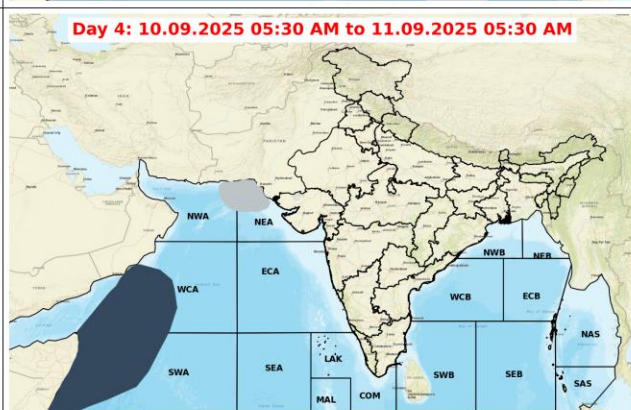
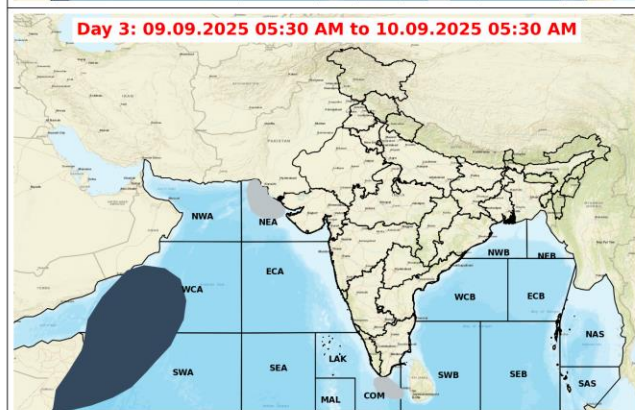
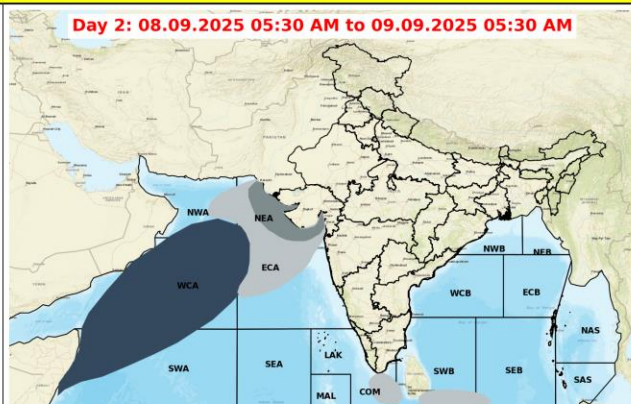
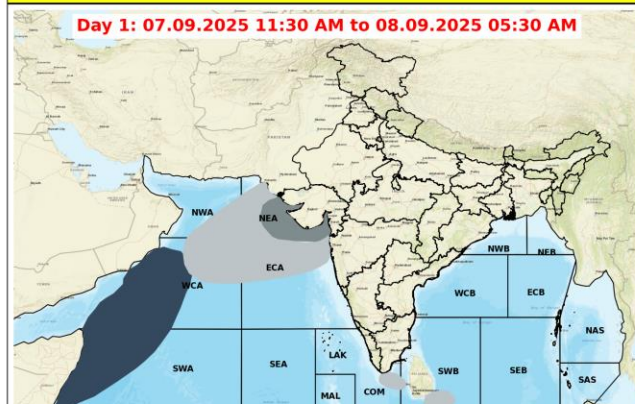


Flash Flood Guidance

<p><u>Persistent Flash Flood Threat (PFFT) till 2330 IST of 07-09-2025 :</u></p> <p>Moderate flash flood threat likely over few watersheds & neighbourhoods of following Met Sub-divisions during next 6 hours.</p> <p>West Rajasthan - Barmer and Jalor districts. Gujarat Region - Banaskantha district. Saurashtra & Kutch - Kachchh district.</p> <p>Surface runoff/ Inundation may occur at some fully saturated soils & low-lying areas over Area of Concern (AoC) as shown in map due to expected rainfall occurrence in next 6 hours.</p>	<p>Product: GFS FFFT Timescale: 06-hr Region: "REGIONAL" Product Date: 2025-09-07 12:00 UTC Valid Date: 2025-09-07 18:00 UTC</p>
<p><u>24 hours Outlook for the Flash Flood Risk (FFR) till 1730 IST of 08-09-2025 :</u></p> <p>Moderate to High flash flood risk likely over few watersheds & neighbourhoods of following Met Sub-divisions during next 24 hours.</p> <p>West Rajasthan - Barmer and Jalor districts. Gujarat Region - Banaskantha and Patan districts. Saurashtra & Kutch - Kachchh district.</p> <p>Surface runoff/ Inundation may occur at some fully saturated soils & low-lying areas over Area of Concern (AoC) as shown in map due to expected rainfall occurrence in next 24 hours.</p>	<p>Product: GFS FFR Timescale: 24-hr Region: "REGIONAL" Product Date: 2025-09-07 12:00 UTC Valid Date: 2025-09-08 12:00 UTC</p>

Flash Flood Threat	Flash Flood Risk
High Threat (Take Action)	High Risk (Take Action)
Moderate threat (Be Prepared)	Moderate Risk (Be Prepared)
Low Threat (Be Updated)	Low Risk (Be Updated)

Fishermen Warning Graphics



Legend

- | | |
|---|---|
| Squally Weather with wind speed 35-45 kmph gusting to 55 kmph | Squally wind with speed 55-65 kmph gusting to 75 kmph |
| Squally Weather with wind speed 40-50 kmph gusting to 60 kmph | CS with Gale winds with speed 60-80 kmph gusting to 90 kmph |
| Squally Weather with wind speed 45-55 kmph gusting to 65 kmph | SCS with Gale wind speed 90-110 kmph gusting to 120 kmph |
| Squally wind with speed 45-55 kmph gusting to 65 kmph | VSCS with Gale wind speed 120-165 kmph gusting to 185 kmph |
| Squally wind with speed 50-60 kmph gusting to 70 kmph | ESCS with Gale wind speed 165-220 kmph gusting to 245 kmph |

Fishermen are advised not to venture into the marked areas.