



**India Meteorological Department
(Ministry of Earth Sciences)**

National Bulletin No. 7 (BOB/08/2025)

TIME OF ISSUE: 1430 HOURS IST

DATED: 26.11.2025

FROM: INDIA METEOROLOGICAL DEPARTMENT (FAX NO. 24643965/24699216/24623220)

TO: CONTROL ROOM, NDM, MINISTRY OF HOME AFFAIRS (FAX.NO. 23093750)

CONTROL ROOM NDMA (FAX.NO. 26701729)

CABINET SECRETARIAT (FAX.NO.23012284, 23018638)

PS TO HON'BLE MINISTER FOR S & T AND EARTH SCIENCES (FAX NO.23316745)

SECRETARY, MOES (FAX NO. 24629777)

H.Q. (INTEGRATED DEFENCE STAFF AND CDS) (FAX NO. 23005137/23005147)

DIRECTOR GENERAL, DOORDARSHAN (23385843)

DIRECTOR GENERAL, AIR (23421105, 23421219)

PIB MOES (FAX NO. 23389042)

UNI (FAX NO. 23355841)

D.G. NATIONAL DISASTER RESPONSE FORCE (NDRF) (FAX NO. 26105912, 2436 3260)

DIRECTOR, PUNCTUALITY, INDIAN RAILWAYS (FAX NO. 23388503)

CHIEF SECRETARY, ODISHA (FAX NO. 0674-2536660)

CHIEF SECRETARY, WEST BENGAL (FAX NO. 033-22144328)

CHIEF SECRETARY, ANDAMAN & NICOBAR ISLANDS (FAX NO. 03192-232656)

CHIEF SECRETARY, TAMIL NADU (FAX NO. 044-25672304)

CHIEF SECRETARY, ANDHRA PRADESH (FAX NO. 0863-2441029)

CHIEF SECRETARY, PUDUCHERRY (FAX NO. 0413-2334145)

CHIEF SECRETARY, KERALA (FAX NO. 0471-2327176)

CHIEF SECRETARY, LAKSHADWEEP (FAX NO. 048-96268124)

Subject: National Bulletin No. 7 based on 1130 hours IST of 26th November, 2025: (A) Cyclonic Storm "Senyar" [Pronunciation: 'Sen-yar'] over coastal areas of northeast Indonesia and (B) Well Marked Low pressure area over southwest Bay of Bengal and adjoining areas of Southeast Sri Lanka & Equatorial Indian Ocean

(A) Cyclonic Storm "Senyar" [Pronunciation: 'Sen-yar'] over coastal areas of northeast Indonesia

The cyclonic storm *Senyar" [Pronunciation: 'Sen-yar'] over coastal areas of Northeast Indonesia moved south-southwestwards with a speed of 7 kmph in past 6 hours and lay centred at 1130 hours IST of today, 26th November 2025 near latitude 4.7°N and longitude 97.8°E over the same region, about 90 km east-southeast of Kuta Makmur (Indonesia), 290 km west-southwest of George Town (Malaysia), 600 km southeast of Nancowry (Nicobar Islands) and 740 km southeast of Car Nicobar (Nicobar Islands).

It is very likely to recurve and move nearly eastwards maintaining its intensity of cyclonic storm till evening of 27th November, 2025.

Forecast track and intensity are given in Table below

Date/Time (IST)	Position (Lat. °N/ Long. °E)	Maximum Sustained Surface Wind Speed (Kmph)	Category Of Cyclonic Disturbance
26.11.25/1130	4.7/97.8	70-80 gusting to 90	Cyclonic Storm
26.11.25/1730	4.4/97.9	70-80 gusting to 90	Cyclonic Storm
26.11.25/2330	4.2/98.2	65-75 gusting to 85	Cyclonic Storm
27.11.25/0530	4.1/98.7	65-75 gusting to 85	Cyclonic Storm
27.11.25/1130	4.2/99.1	60-70 gusting to 80	Cyclonic Storm
27.11.25/2330	4.4/99.7	50-60 gusting to 70	Deep Depression

(B) Well Marked Low pressure area over southwest Bay of Bengal and adjoining areas of Southeast Sri Lanka & Equatorial Indian Ocean

The Well marked low-pressure area over southwest Bay of Bengal and adjoining areas of Southeast Sri Lanka & Equatorial Indian Ocean persisted over the same region at 1130 hours IST of today, the 26th November, 2025.

It is very likely to move nearly north-northwestwards and intensify into a depression during next 24 hours. Thereafter, it is very likely to intensify further and continue to move north-northwestwards across southwest Bay of Bengal towards North Tamil Nadu & Puducherry coasts during subsequent 48 hours.

Rainfall Warning:

❖ **Andaman & Nicobar Islands:**

Nicobar Islands: Light to moderate rainfall at most places with **heavy to very rainfall (07-20 cm)** at isolated places during 26th to 27th November. It would decrease gradually becoming **heavy rainfall** at isolated places during 28th and 29th November, 2025.

Andaman Islands: Light to moderate rainfall at many places with **heavy rainfall (07-11 cm)** at isolated places is also likely during 26th to 27th November. Thereafter, it would decrease gradually.

❖ **Tamil Nadu & Puducherry:** Light to moderate rainfall at many places with **heavy rainfall** at isolated places during 26th to 27th November, 2025. The rainfall activity would increase thereafter and light to moderate rainfall at most places with **heavy to very rainfall** at isolated places is very likely on 28th November and **heavy to very heavy at many places & extremely heavy rainfall (>20 cm) at isolated places** on 29th & 30th November, 2025. Thereafter, it would gradually decrease with light to moderate rainfall at many places with **heavy rainfall** at isolated places on 1st December, 2025.

❖ **Kerala:** Light to moderate rainfall at many places with **heavy rainfall** at isolated places is very likely on 26th November. Thereafter, it will decrease gradually.

❖ **Coastal Andhra Pradesh:** Light to moderate rainfall at many places with **heavy to very rainfall** at isolated places is very likely on 29th November. Thereafter, it is very likely to increase becoming light to moderate rainfall at most places with **heavy to very rainfall** at isolated places on 30th November. It would then decrease gradually becoming light to moderate rainfall at many places with **heavy rainfall** at isolated places on 1st December.

❖ **Rayalaseema:** Light to moderate rainfall at many places with **heavy to very rainfall** at isolated places is very likely on 29th and 30th November. It would then decrease gradually.

(ii) Wind Warning:

(a) Strait of Malacca, Malaysia and adjoining areas of South Andaman Sea, along & off Nicobar Islands, Indonesia, and Thailand:

Gale wind speed reaching 70-80 gusting to 90 kmph is likely to prevail till evening of 26th November. Winds speed would gradually decrease thereafter becoming squally winds speed reaching 50-60 gusting to 70 kmph by 27th morning, 40-50 gusting to 60 kmph from 28th morning for subsequent 12 hours and decrease gradually thereafter.

(b) Adjoining areas of North Andaman Sea

Squally weather with wind speed reaching 35-45 gusting to 55 kmph is very likely to prevail during 26th to 28th November.

(c) Southeast Bay of Bengal:

Squally weather with wind speed reaching 35-45 gusting to 55 kmph is very likely on 26th November. It would gradually increase becoming squally winds speed reaching 45-55 gusting to 65 kmph during 26th to 28th November.

(d) Southwest Bay of Bengal, Gulf of Mannar, Comorin area and along & off Tamil Nadu, Puducherry & Sri Lanka coasts

Squally weather with wind speed reaching 35-45 kmph gusting to 55 kmph is likely to prevail on 26th November. It would gradually increase becoming squally wind with speed reaching 40-50 gusting to 60 kmph on 27th November. Thereafter, it would gradually increase becoming 50-60 gusting to 70 kmph on 28th and increase further thereafter till 30th November.

(e) Adjoining areas of Southeast Arabian Sea, Lakshadweep, Maldives and along & off Kerala coast:

Squally weather with wind speed reaching 35-45 kmph gusting to 55 kmph likely to prevail during 26th to 27th November.

(f) Westcentral Bay of Bengal and along & off Andhra Pradesh coast:

Squally weather with wind speed reaching 35-45 kmph gusting to 55 kmph likely to commence from 27th November. It is very likely to increase thereafter, becoming squally winds speed reaching 40-50 kmph gusting to 60 kmph during 28th to 29th November and 50-60 gusting to 70 kmph on 30th November. Thereafter, the winds would decrease gradually becoming 35-45 gusting to 45 kmph on 1st December and decrease further thereafter.

(iii) Sea Condition:

(a) Strait of Malacca, Malaysia and adjoining areas of South Andaman Sea, along & off Nicobar Islands, Indonesia, and Thailand:

Very rough to high sea conditions are very likely from 26th morning till 26th midnight. It would gradually improve thereafter becoming very rough to rough from 27th morning to 28th morning and improve thereafter.

(b) Adjoining areas of North Andaman Sea

Moderate to rough sea conditions are very likely during 26th to 28th November.

(c) Southeast Bay of Bengal:

Moderate to rough sea conditions are very likely on 26th November, becoming rough during 27th to 28th November.

(d) Southwest Bay of Bengal, Gulf of Mannar, Comorin area and along & off Tamil Nadu, Puducherry & Sri Lanka coasts

Moderate to rough sea conditions are very likely on 26th November, becoming rough to very rough from 27th to 28th November and very rough to high during 28th to 30th November.

(e) Adjoining areas of Southeast Arabian Sea, Lakshadweep, Maldives and along & off Kerala coast:

Moderate to rough sea conditions are very likely during 26th to 27th November.

(f) Westcentral Bay of Bengal and along & off Andhra Pradesh coast:

Moderate to rough sea conditions are very likely from 27th November, becoming rough to very rough during 28th to 30th November.

(iv) Fishermen Warning:

(a) Total suspension of fishing operations in coastal areas of Indonesia & Malaysia, Strait of Malacca, and adjoining areas of South Andaman Sea, along & off Nicobar Islands, and Thailand till 28th November.

(b) Fishermen are advised not to venture into

(i) Southeast Bay of Bengal during 26th to 28th November.

(ii) Southwest Bay of Bengal, Gulf of Mannar, Comorin area and along & off Tamil Nadu, Puducherry & Sri Lanka coasts till 30th November

(iii) Adjoining areas of westcentral Bay of Bengal and along & off Andhra Pradesh coast from 27th to 30th November

(iv) Adjoining areas of Southeast Arabian Sea, Lakshadweep, Maldives and along & off Kerala coast during 26th to 27th November.

(c) Those out at sea should avoid coastal areas of Indonesia & Malaysia, Strait of Malacca, and adjoining areas of South Andaman Sea, along & off Nicobar Islands, and Thailand till 28th, Southeast Bay of Bengal during 26th to 28th, southwest Bay of Bengal till 30th and westcentral Bay of Bengal during 27th to 30th November.

(d) The fishermen along & off South Andhra Pradesh coast should return to coast before 27th November.

➤ **Impact Expected over Andaman & Nicobar Islands, Tamil Nadu & Puducherry, Kerala and Lakshadweep**

- ❖ Minor damage to Kutcha and some damage to Pucca roads. Flooding of escape routes.
- ❖ Damage to horticulture and standing crops due to inundation and wind.
- ❖ Localized Flooding of roads, water logging in low lying areas and closure of underpasses mainly in urban areas of the above region.
- ❖ Occasional reduction in visibility due to heavy rainfall.
- ❖ Disruption of traffic in city areas and roadways due to water logging in roads and poor visibility due to heavy rain leading to increased travel time and incidents
- ❖ Likely disruption of marine and inland water transportation like small boats and trawlers.
- ❖ Movement in motor boats unsafe

➤ **Action Suggested over Andaman & Nicobar Islands Tamil Nadu & Puducherry, Kerala and Lakshadweep**

- Judicious regulation of onshore/offshore, Port and maritime activities
- Judicious regulation of tourism activities in coastal areas.
- Judicious regulation of surface transports including railways and roadways.
- Avoid going to areas that face the water logging problems often.

Next bulletin will be issued at 1430 hours IST of today, the 26th November, 2025.

(Monica Sharma)
Scientist-E, RSMC & IMD, New Delhi

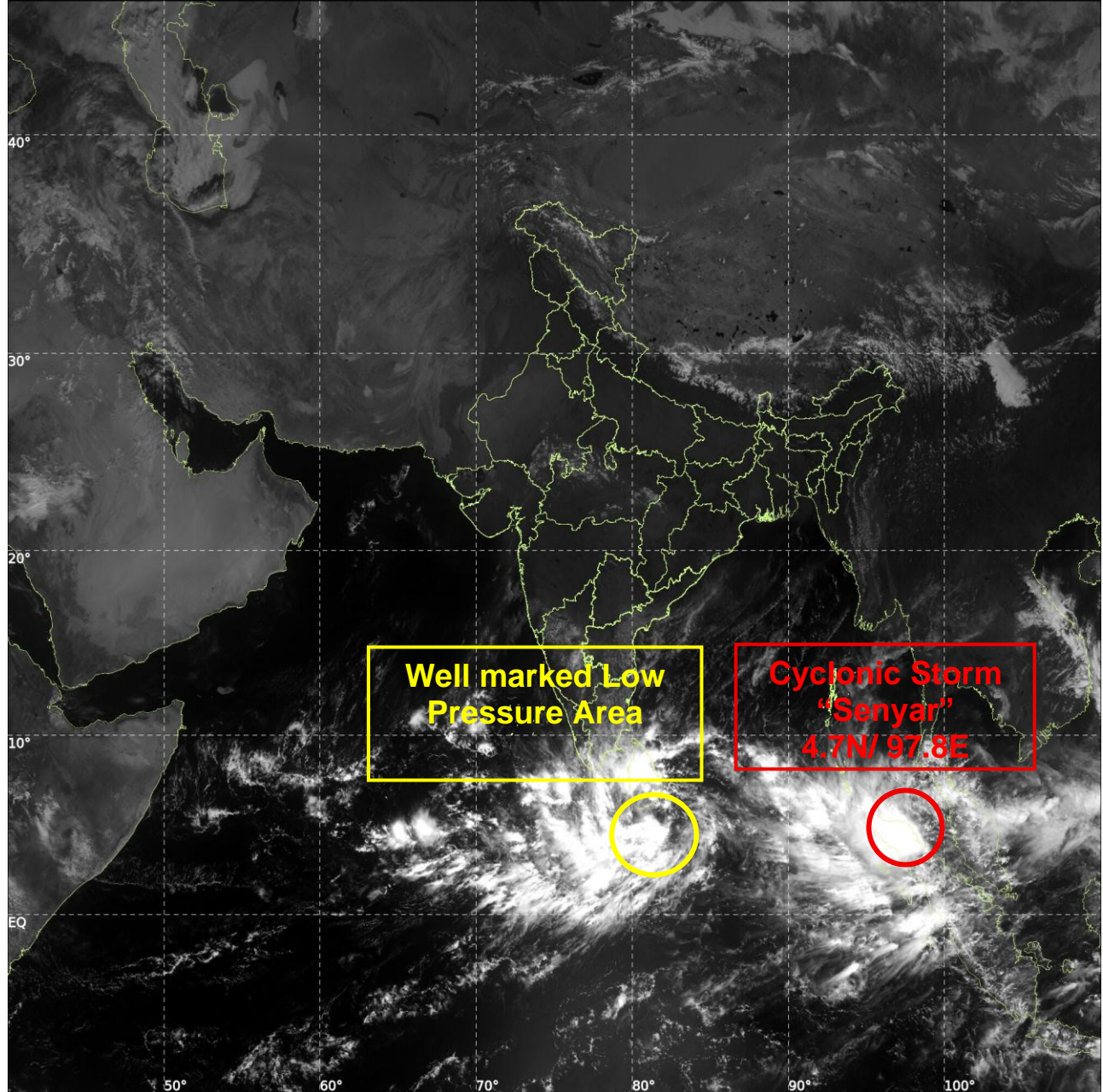
*Copy to: ACWC Kolkata/ACWC Chennai/CWC Bhubaneswar/CWC Vishakhapatnam/CWC Thiruvananthapuram/
Meteorological Centre Vijay Puram/ and Meteorological Centre Amaravati*



INSAT-3DS IMG, Visible Count @ 0.65 μm
GMT:26-11-2025/(0630-0657) IST:26-11-2025/(1200-1227)
LIC MERCATOR (LINEAR STRETCH: 0.5%)

64

415





OBSERVED AND FORECAST TRACK OF CYCLONIC STORM "SENYAR" OVER COASTAL AREAS OF NORTHEAST INDONESIA BASED ON 0600 UTC (1130 Hrs. IST) OF 26TH NOVEMBER 2025



DATE/TIME IN UTC
 IST=UTC + 0530
 L: LOW PRESSURE AREA
 WML: WELL MARKED LOW PRESSURE AREA
 D: DEPRESSION (17-27 KT)
 DD: DEEP DEPRESSION (28-33 KT)
 CS: CYCLONIC STORM (34-47 KT)
 SCS: SEVERE CYCLONIC STORM (48-63KT)
 VSCS: VERY SEVERE CYCLONIC STORM (64-89 KT)
 ESCS: EXTREMELY SEVERE CYCLONIC STORM (90-119 KT)
 SuCS: SUPER CYCLONIC STORM \geq 120 KT)

● LESS THAN 34 KT
 6 34-47 KT
 6 \geq 48 KT
 — OBSERVED TRACK
 — FORECAST TRACK
 ▲ CONE OF UNCERTAINTY



OBSERVED AND FORECAST TRACK ALONGWITH QUADRANT WIND DISTRIBUTION OF CYCLONIC STORM "SENYAR" OVER COASTAL AREAS OF NORTHEAST INDONESIA BASED ON 0600 UTC (1130 Hrs. IST) OF 26TH NOVEMBER 2025



DATE/TIME IN UTC

IST=UTC + 0530

L: LOW PRESSURE AREA

WML: WELL MARKED LOW PRESSURE AREA

D: DEPRESSION (17-27 KT)

DD: DEEP DEPRESSION (28-33 KT)

CS: CYCLONIC STORM (34-47 KT)

SCS: SEVERE CYCLONIC STORM (48-63 KT)

VSCS: VERY SEVERE CYCLONIC STORM (64-89 KT)

ESCS: EXTREMELY SEVERE CYCLONIC STORM (90-119 KT)

SuCS: SUPER CYCLONIC STORM (≥ 120 KT)

● LESS THAN 34 KT

● 34.47 KT

● ≥ 48 KT

— OBSERVED TRACK

— FORECAST TRACK

▲ CONE OF UNCERTAINTY

AREA OF MAXIMUM SUSTAINED WIND SPEED:

28-33 KT (52-61 KMPH)

34-49 KT (62-91 KMPH)

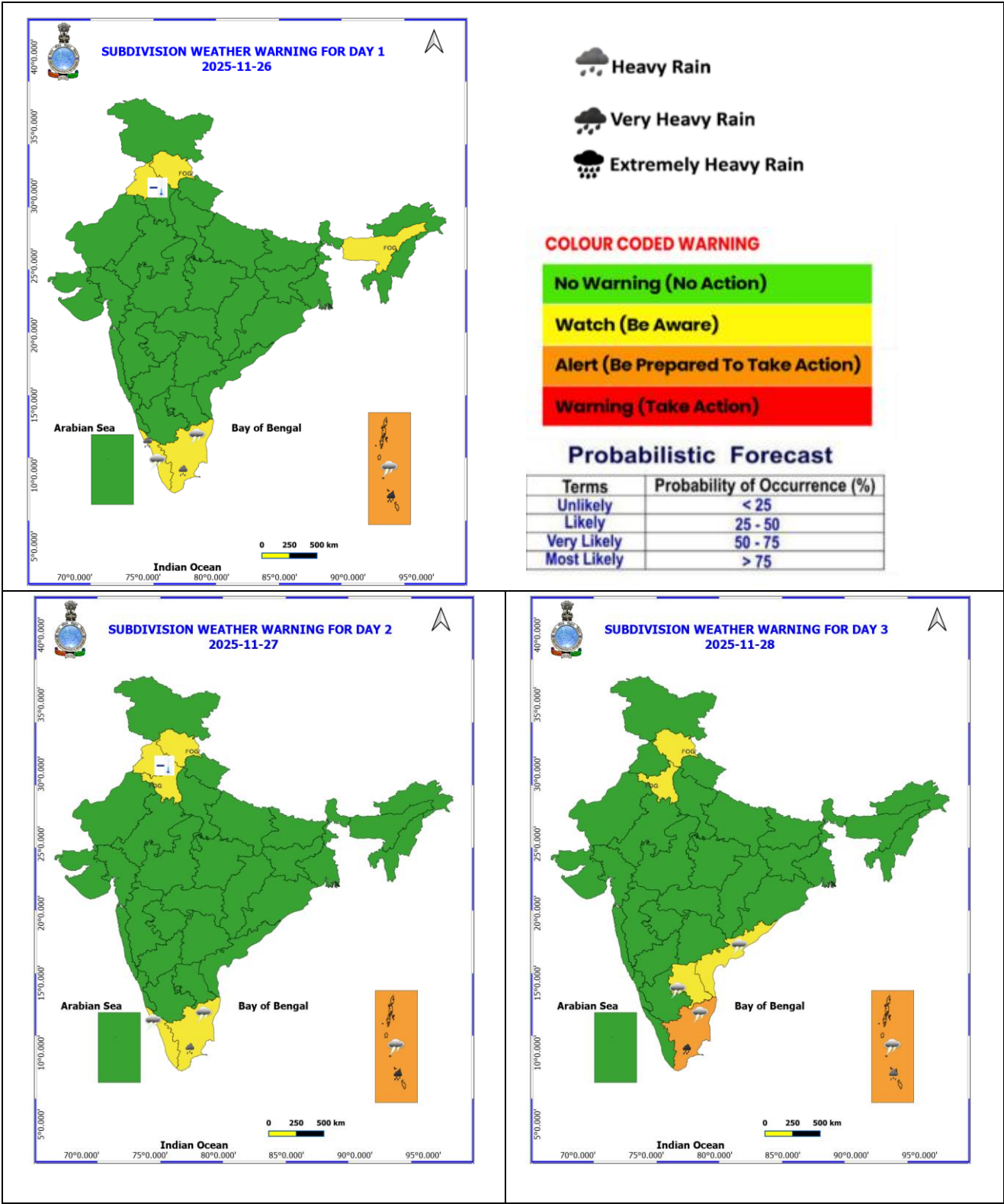
50-63 KT (92-117 KMPH)

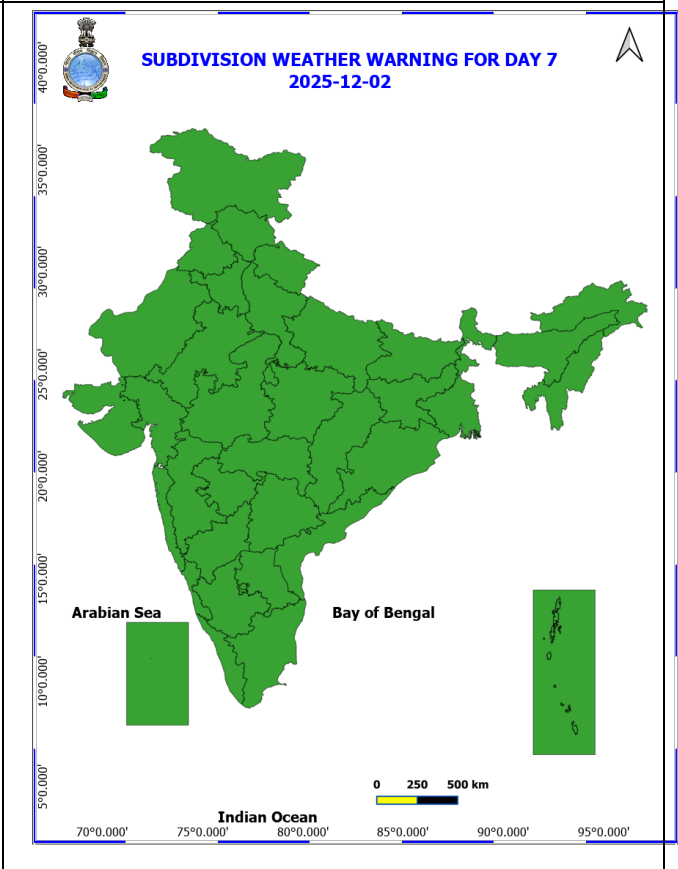
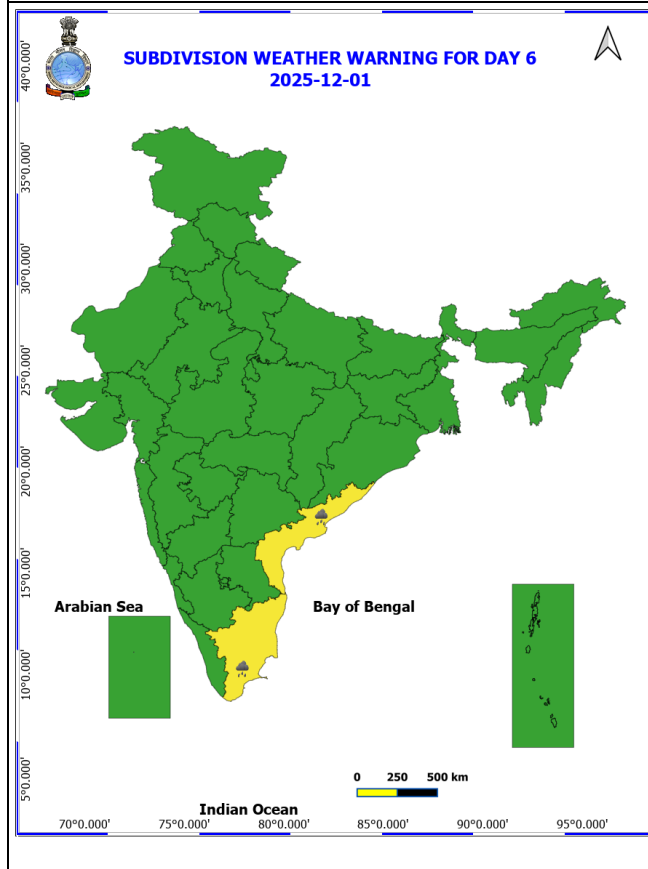
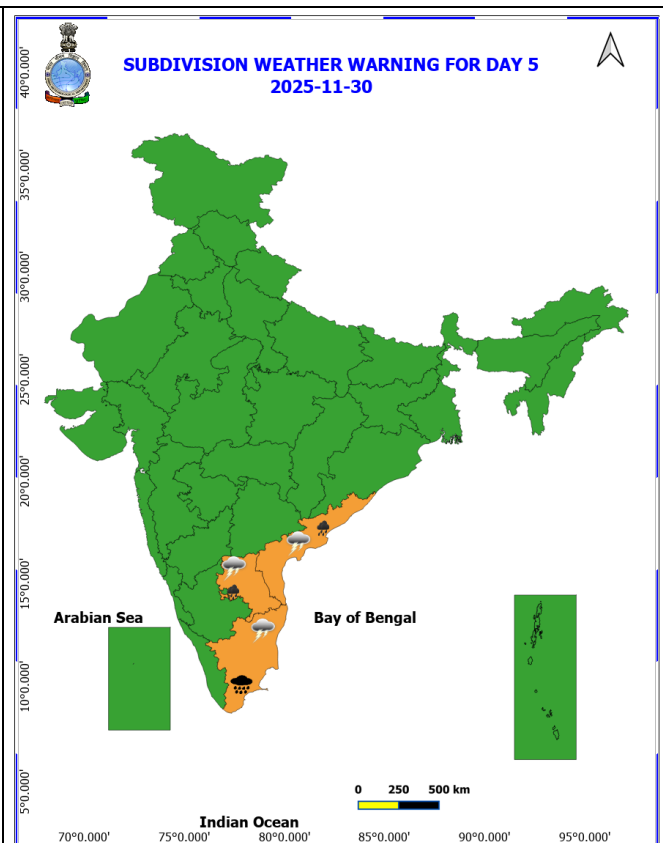
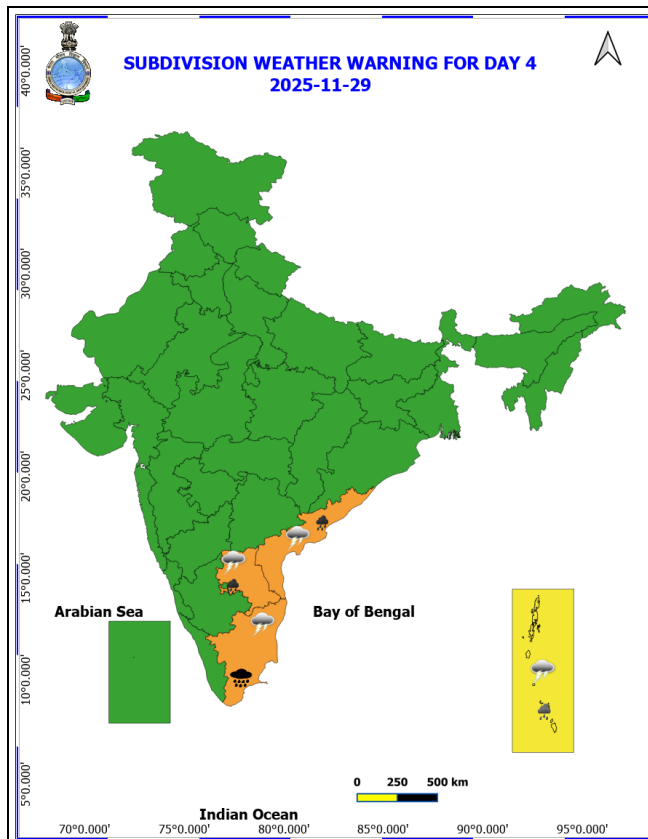
≥ 64 KT (≥ 118 KMPH)

IMPACT OVER THE SEA

MSW (knot/kmph)	Impact	Action
28-33 (52-61)	Very rough seas	Total suspension of fishing operations
34-49 (62-91)	High to very high seas	Total suspension of fishing operations
50-63 (92-117)	Very high seas	Total suspension of fishing operations
≥ 64 (≥ 118)	Phenomenal	Total suspension of fishing operations

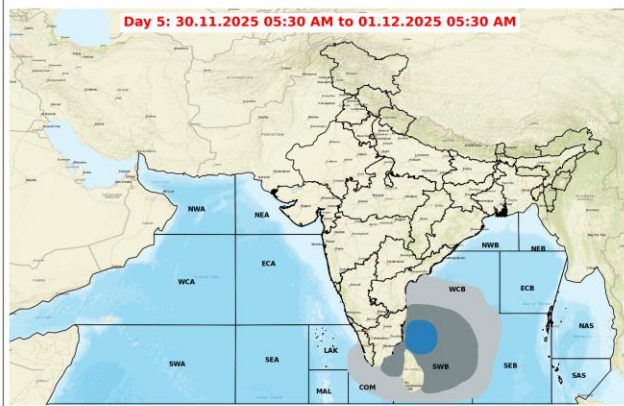
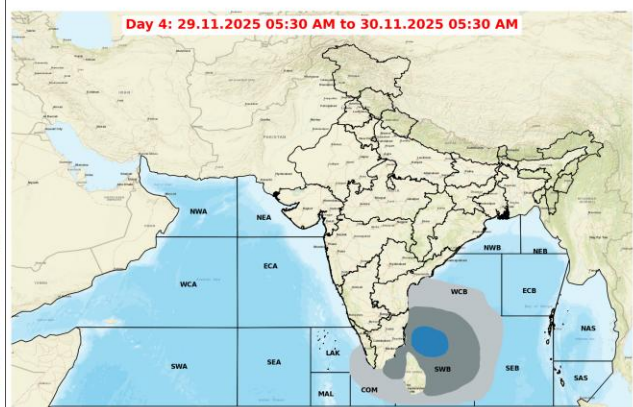
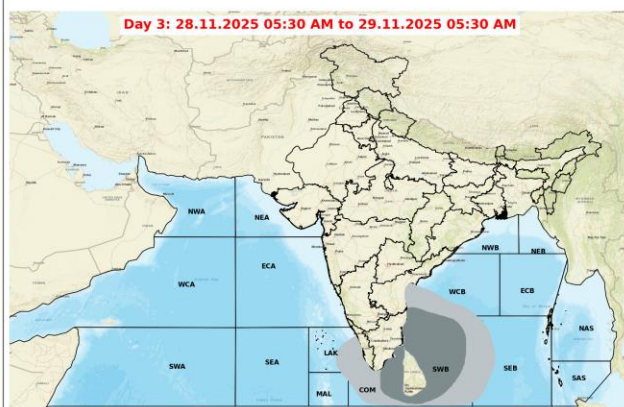
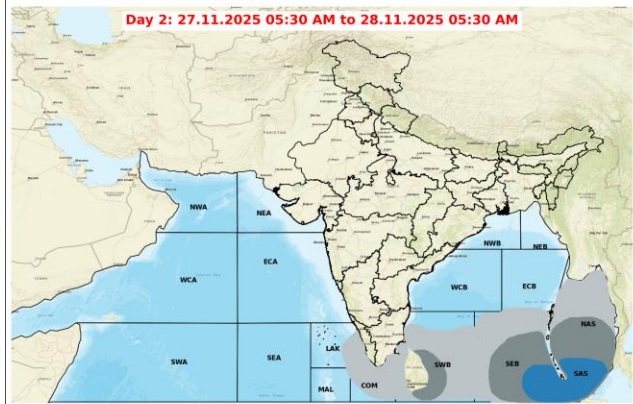
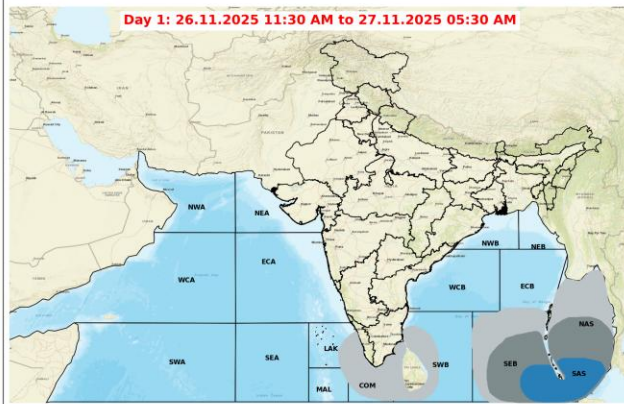
WEATHER WARNING GRAPHICS





- Action may be taken based on **ORANGE AND RED** COLOUR warnings.
- Vulnerable regions likely urban and hilly areas action may be initiated for heavy rainfall warning.
- As the lead period increases forecast accuracy decreases.

Fishermen Warning Graphics



Legend

	Squally Weather with wind speed 35-45 kmph gusting to 55 kmph		Squally wind with speed 55-65 kmph gusting to 75 kmph
	Squally Weather with wind speed 40-50 kmph gusting to 60 kmph		CS with Gale winds with speed 60-80 kmph gusting to 90 kmph
	Squally Weather with wind speed 45-55 kmph gusting to 65 kmph		SCS with Gale wind speed 90-110 kmph gusting to 120 kmph
	Squally wind with speed 45-55 kmph gusting to 65 kmph		VSCS with Gale wind speed 120-165 kmph gusting to 185 kmph
	Squally wind with speed 50-60 kmph gusting to 70 kmph		ESCS with Gale wind speed 165-220 kmph gusting to 245 kmph

Fishermen are advised not to venture into the marked areas.