



**India Meteorological Department
(Ministry of Earth Sciences)**

NATIONAL BULLETIN NO. 13 (ARB/03/2022)

TIME OF ISSUE:0200 HOURS IST

DATED: 17.12.2022

FROM: INDIA METEOROLOGICAL DEPARTMENT (FAX NO. 24643965/24699216/24623220)

**TO: CONTROL ROOM, NDM, MINISTRY OF HOME AFFAIRS (FAX.NO. 23093750)
CONTROL ROOM NDMA (FAX.NO. 26701729)
CABINET SECRETARIAT (FAX.NO.23012284, 23018638)
PS TO HON'BLE MINISTER FOR S & T AND EARTH SCIENCES (FAX NO.23316745)
SECRETARY, MOES (FAX NO. 24629777)
H.Q. (INTEGRATED DEFENCE STAFF AND CDS) (FAX NO. 23005137/23005147)
DIRECTOR GENERAL, DOORDARSHAN (23385843)
DIRECTOR GENERAL, AIR (23421105, 23421219)
PIB MOES (FAX NO. 23389042)
UNI (FAX NO. 23355841)
D.G. NATIONAL DISASTER RESPONSE FORCE (NDRF) (FAX NO. 26105912, 2436 3260)
DIRECTOR, PUNCTUALITY, INDIAN RAILWAYS (FAX NO. 23388503)
CHIEF SECRETARY, GUJARAT (FAX NO. 079-23250305)
CHIEF SECRETARY, DAMAN & DIU (FAX NO. 0260-2230775)
CHIEF SECRETARY, DADRA & NAGAR HAVELI (FAX NO. 0260-2645466)
CHIEF SECRETARY, GOA (FAX NO. 0832-2415201)
CHIEF SECRETARY, MAHARASHTRA (FAX NO. 022- 22028594)
CHIEF SECRETARY, KARNATAKA (FAX NO. 080-22258913)
CHIEF SECRETARY, KERALA (FAX NO. 0471-2327176)
ADMINISTRATOR, LAKSHADWEEP ISLANDS (FAX NO. 0413-262184)
CHIEF SECRETARY, ANDHRA PRADESH (FAX NO. 0863-2441029, 08645-246600)
CHIEF SECRETARY, TAMIL NADU (FAX NO 044-25672304)
CHIEF SECRETARY, PUDUCHERRY (FAX NO 0413-2334145)
CHIEF SECRETARY, GOVT. OF GUJARAT (FAX NO. 079-23250305)
ADMINISTRATOR, ANDAMAN & NICOBAR ISLANDS (FAX NO. 03192- 232656)**

Sub: (A) Depression over Westcentral & adjoining Eastcentral Arabian Sea

(B) Low pressure area over Southeast Bay of Bengal & adjoining areas of East Equatorial Indian Ocean

(A) Depression over Westcentral & adjoining Eastcentral Arabian Sea

The Depression over Westcentral & adjoining Eastcentral Arabian Sea moved west-northwestwards with a speed of 14 kmph during past 06 hours and lay centered at 2330 hrs IST of yesterday, the 16th December 2022 over Westcentral & adjoining Eastcentral Arabian Sea near latitude 14.1°N and longitude 63.0°E about 1100 km west-northwest of Aminidivi (Lakshadweep), 1170 km west-southwest of Panjim (Goa) and 1010 km east-southeast of Salalah (Oman).

It is very likely to move nearly westwards and weaken gradually into a well marked low pressure area by 17th December evening.

Forecast Track and Intensity:

Date/Time (IST)	Forecast Lead Period	Position (Lat. °N/Long. °E)	Maximum sustained surface wind speed (kmph)	Category of cyclonic disturbance
16.12.22/2330	00	14.1/63.0	45-55 gusting to 65	Depression
17.12.22/1130	12	14.1/61.7	40-50 gusting to 60	Depression
17.12.22/2330	24	14.0/60.4	25-35 gusting to 45	Well Marked Low Pressure Area

Warnings:

(i) **Heavy Rainfall warning: No warning** as the depression is moving away from India coast.

(ii) **Wind warning (warning graphics enclosed)**

- **Eastcentral Arabian Sea: Squally weather with wind speed reaching 45-55 kmph gusting to 65 kmph** is prevailing around the system center and it is likely decrease gradually becoming **40-50 kmph gusting to 60 kmph** during next 12 hours and decrease further thereafter.
- **Westcentral Arabian Sea: Squally weather with wind speed reaching 45-55 kmph gusting to 65 kmph** is prevailing near the system center. It is likely to decrease gradually becoming **40-50 kmph gusting to 60 kmph during next 12 hours** and will gradually decrease further becoming 25-35 kmph gusting to 45 kmph during subsequent 12 hours.
- **Southwest Arabian Sea: Squally weather with wind speed reaching 45-55 kmph gusting to 65 kmph** is prevailing over the region and is likely to become **40-50 kmph gusting to 60 kmph** during next 12 hours and gradually decrease thereafter.

(iii) **Sea Condition**

- ❖ **Eastcentral Arabian Sea: Sea Condition** is likely to be rough till 17th December morning and improve thereafter.
- ❖ **Westcentral Arabian Sea: Sea Condition** is likely to be rough till 17th December evening and improve thereafter.
- ❖ **Southwest Arabian Sea: Sea Condition** is likely to be rough till 17th December evening and improve thereafter.

(iv) **Fishermen Warning**

Fishermen are advised not to venture into

- ❖ **Eastcentral Arabian Sea** till morning of 17th December.
- ❖ **Westcentral & Southwest Arabian Sea** till 17th December.

(B) **Low pressure area over Southeast Bay of Bengal & adjoining East Equatorial Indian Ocean**

The **Low Pressure Area** over Southeast Bay of Bengal & adjoining East Equatorial Indian Ocean persists over the same region at 2330 hrs IST of yesterday, the 16th December. It is likely to move westwards and maintain its intensity over South Bay of Bengal till morning of 17th December 2022.

Warnings:

(i) **Heavy Rainfall Warning:**

Light to moderate rainfall at many places with heavy rainfall at isolated places is very likely over Nicobar Islands during next 12 hours.

(ii) **Wind warning:**

- ❖ **Squally weather with wind speed reaching 35-45 kmph gusting to 55 kmph** is very likely over south Andaman Sea till morning of 17th December.
- ❖ **Squally wind speed reaching 35-45 kmph gusting to 55 kmph** is likely over Southeast Bay of Bengal till morning of 17th December.
- ❖ **Squally wind speed reaching 35-45 kmph gusting to 55 kmph** is likely to prevail over Southwest Bay of Bengal on 17th December

(iii) Sea condition: Sea condition is likely to be rough over

- ❖ South Andaman Sea till morning of 17th December.
- ❖ Southeast Bay of Bengal till morning of 17th December.
- ❖ Southwest Bay of Bengal on 17th December.

(iv) Fishermen Warning (warning graphics enclosed)

Fishermen are advised not to venture into:

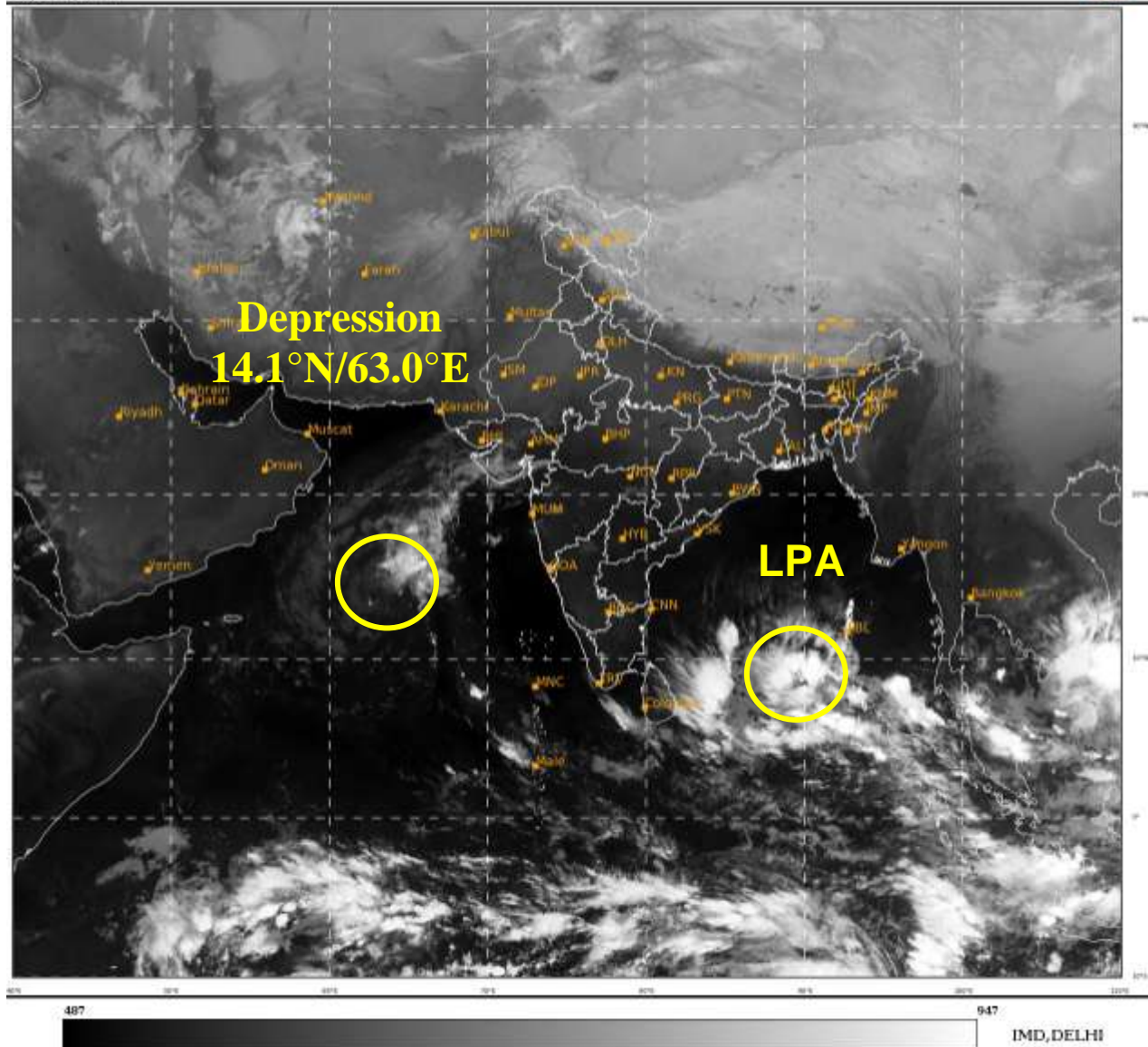
- ❖ South Andaman Sea till morning of 17th December.
- ❖ Southeast Bay of Bengal till morning of 17th December.
- ❖ Southwest Bay of Bengal on 17th December.

Both the systems are under continuous surveillance and the next message will be issued at 0830 hours IST of 17th December, 2022.

(Shibin Balakrishnan)
Scientist C, Cyclone Warning Division, New Delhi

Copy to: ACWC Mumbai/ ACWC Chennai/ /CWC Ahmedabad/ CWC Thiruvananthapuram/MC Goa

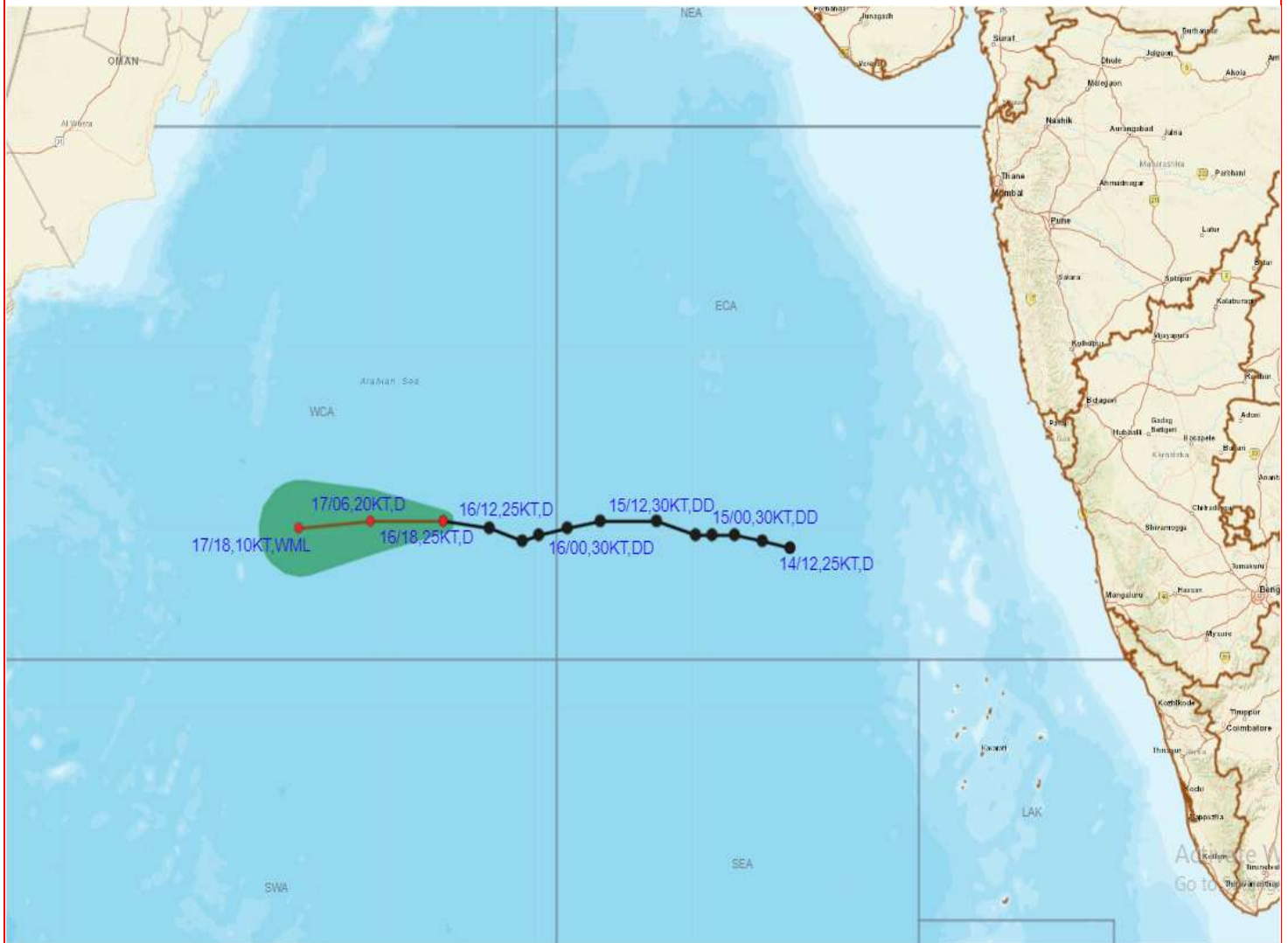
LEGEND: Heavy Rainfall: 64.5 to 115.5mm, **Very Heavy Rainfall:** 115.6 to 204.4mm
Most Places: more than 76% of total stations, **Isolated Places:** Less than 25% of total









LPA: Low Pressure Area



OBSERVED AND FORECAST TRACK OF DEPRESSION OVER WESTCENTRAL AND ADJOINING EASTCENTRAL ARABIAN SEA BASED ON 1800 UTC OF 16TH DECEMBER, 2022



DATE/TIME IN UTC
IST=UTC + 0530
L: LOW PRESSURE AREA
WML: WELL MARKED LOW PRESSURE AREA
D: DEPRESSION (17-27 KT)
DD: DEEP DEPRESSION (28-33 KT)
CS: CYCLONIC STORM (34-47 KT)
SCS: SEVERE CYCLONIC STORM (48-63KT)
VSCS: VERY SEVERE CYCLONIC STORM (64-89 KT)
ESCS: EXTREMELY SEVERE CYCLONIC STORM (90-119 KT)
SuCS: SUPER CYCLONIC STORM (≥ 20 KT)

-  LESS THAN 34 KT
-  34-47 KT
-  ≥ 48 KT
-  OBSERVED TRACK
-  FORECAST TRACK
-  CONE OF UNCERTAINTY



Fishermen warning graphics



Squally WX with wind speed 40-45 kmph gusting to 55 kmph
Squally wind speed 45-55 kmph gusting to 65 kmph
Squally wind speed 55-65 kmph gusting to 75 kmph

Fishermen are advised not to venture into the marked areas.