



**India Meteorological Department
(Ministry of Earth Sciences)**

NATIONAL BULLETIN NO. 13 (Land/04/2025)

TIME OF ISSUE: 1240 HOURS IST

DATED: 09.09.2025

FROM: INDIA METEOROLOGICAL DEPARTMENT (FAX NO. 24643965/24699216/24623220)

TO: CONTROL ROOM, NDM, MINISTRY OF HOME AFFAIRS (FAX.NO. 23093750)

CONTROL ROOM NDMA (FAX.NO. 26701729)

CABINET SECRETARIAT (FAX.NO.23012284, 23018638)

PS TO HON'BLE MINISTER FOR S & T AND EARTH SCIENCES (FAX NO.23316745)

SECRETARY, MOES (FAX NO. 24629777)

H.Q. (INTEGRATED DEFENCE STAFF AND CDS) (FAX NO. 23005137/23005147)

DIRECTOR GENERAL, DOORDARSHAN (23385843)

DIRECTOR GENERAL, AIR (23421105, 23421219)

PIB MOES (FAX NO. 23389042)

UNI (FAX NO. 23355841)

D.G. NATIONAL DISASTER RESPONSE FORCE (NDRF) (FAX NO. 26105912, 2436 3260)

DIRECTOR, PUNCTUALITY, INDIAN RAILWAYS (FAX NO. 23388503)

CHIEF SECRETARY, GOVT. OF GUJARAT (FAX NO. +9179 23250305)

CHIEF SECRETARY, GOVT. OF MAHARASHTRA (FAX NO. +9122 22028594)

CHIEF SECRETARY, DAMAN & DIU (FAX NO. 0260-2230775)

CHIEF SECRETARY, DADRA & NAGAR HAVELI (FAX NO. 0260-2645466)

CHIEF SECRETARY, GOA (FAX NO. 0832-2415201)

Subject: Depression over southeast Pakistan

The depression over southeast Pakistan moved south-southwestwards with the speed of 13 kmph during past 6 hours, lay centred at 0830 hrs IST of today, the 09th September, 2025, over the same region near latitude 25.3°N and longitude 68.4°E, close to south of Hyderabad (Pakistan), 20 km northeast of Sakrand (Pakistan), 90 km northwest of Badin (Pakistan) and 270 km north-northwest of Bhuj-Rudramata (Gujarat).

It is very likely to move southwestwards across south Pakistan and weaken gradually into a Well-marked low-pressure area during next 12 hours. Thereafter, it is likely to emerge into northeast Arabian Sea and move nearly westwards during subsequent 24 hours.

Warnings:

(i) Rainfall Warning:

Saurashtra & Kutch: Light to moderate rainfall at many places with **heavy rainfall at isolated places** is likely over the Kutch region on 9th September.

(ii) Wind Warnings:

- Squally weather with wind speed reaching 45-55 kmph gusting to 65 kmph is likely to prevail over northeast Arabian Sea and along & off Saurashtra & Kutch and Pakistan coasts on 9th September and would gradually decrease becoming 40-50 kmph gusting to 60 kmph over the same region on 10th September

(iii) Sea condition: Sea condition is likely to be rough over northeast and adjoining northwest Arabian Sea, along & off Saurashtra & Kutch and Pakistan coasts on 9th & 10th September and improve thereafter.

(iv) Fishermen Warning:

- Fishermen are advised not to venture into northeast Arabian Sea and along & off Saurashtra & Kutch and Pakistan coasts till evening of today, the 9th September, 2025.
- Small ships/shipping activities are to be monitored and regulated over north Arabian Sea till evening of today, the 9th September 2025.

(v) Impact Expected and Action Suggested due squally winds over Saurashtra & Kutch

Impact expected:

- ❖ Tourism and recreational activities may be affected.
- ❖ Helicopter services may get affected.
- ❖ onshore/off shore operations

Action suggested:

- ❖ Helicopter services to be regulated.
- ❖ Judicious regulation of tourism, recreational and onshore/off shore operations till evening of today, the 9th September 2025.

Next bulletin will be issued at 1430 hrs IST of today, the 09th September, 2025.

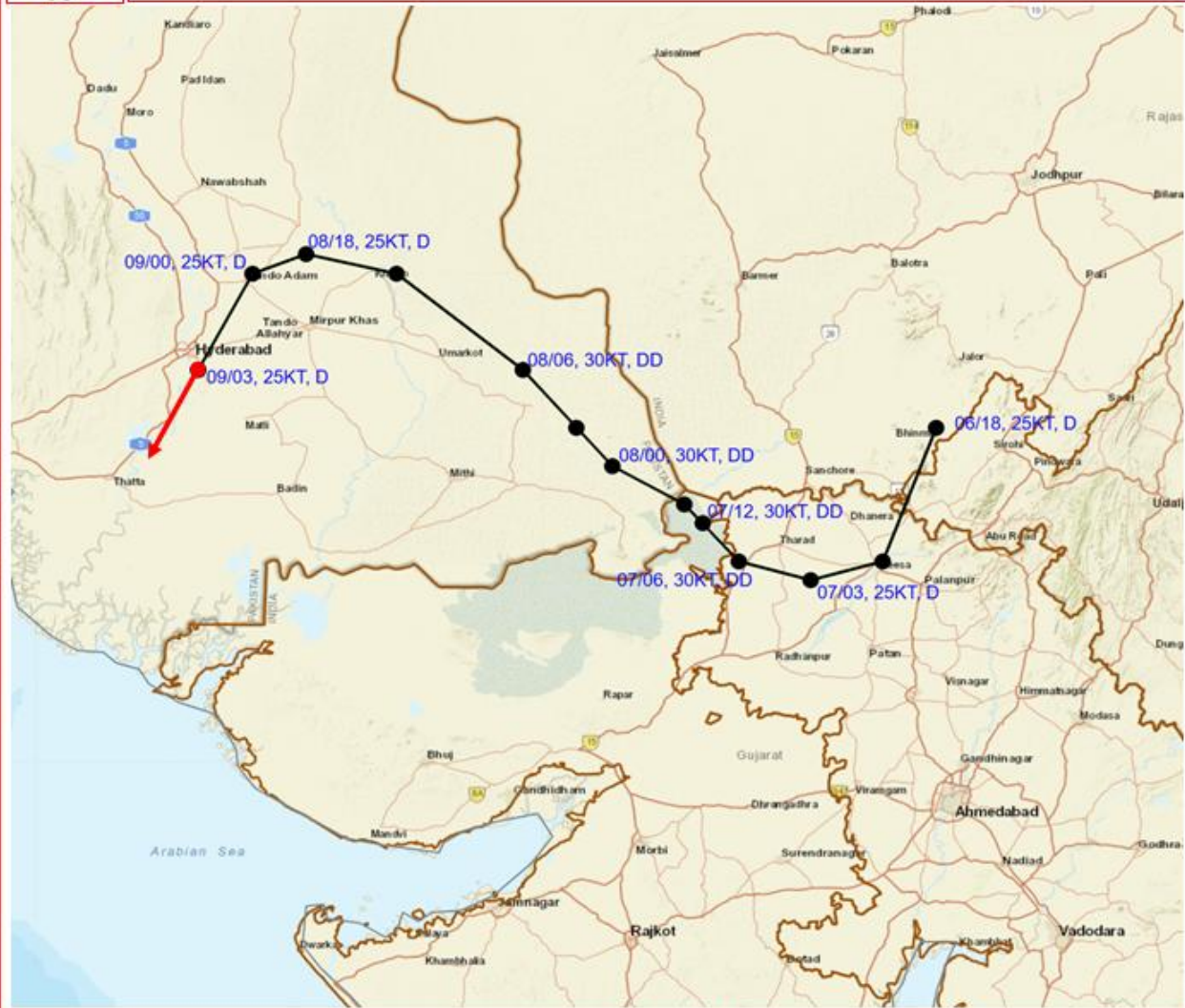
(A.K.Das)

Scientist-F, IMD, New Delhi

Copy to: Regional Meteorological Centres- Mumbai, Meteorological Centres Ahmedabad



OBSERVED AND FORECAST TRACK OF DEPRESSION OVER SOUTHEAST PAKISTAN BASED ON 0300 UTC (0830 IST) OF 09th SEP, 2025.



DATE/TIME IN UTC
IST=UTC + 0530
L: LOW PRESSURE AREA
WML: WELL MARKED LOW PRESSURE AREA
D: DEPRESSION (17-27 KT)
DD: DEEP DEPRESSION (28-33 KT)
CS: CYCLONIC STORM (34-47 KT)
SCS: SEVERE CYCLONIC STORM (48-63 KT)
VSCS: VERY SEVERE CYCLONIC STORM (64-89 KT)
ESCS: EXTREMELY SEVERE CYCLONIC STORM (90-119 KT)
SuCS: SUPER CYCLONIC STORM (≥ 120 KT)

- LESS THAN 34 KT
- 34-47 KT
- ≥ 48 KT
- OBSERVED TRACK
- FORECAST TRACK
- CONE OF UNCERTAINTY

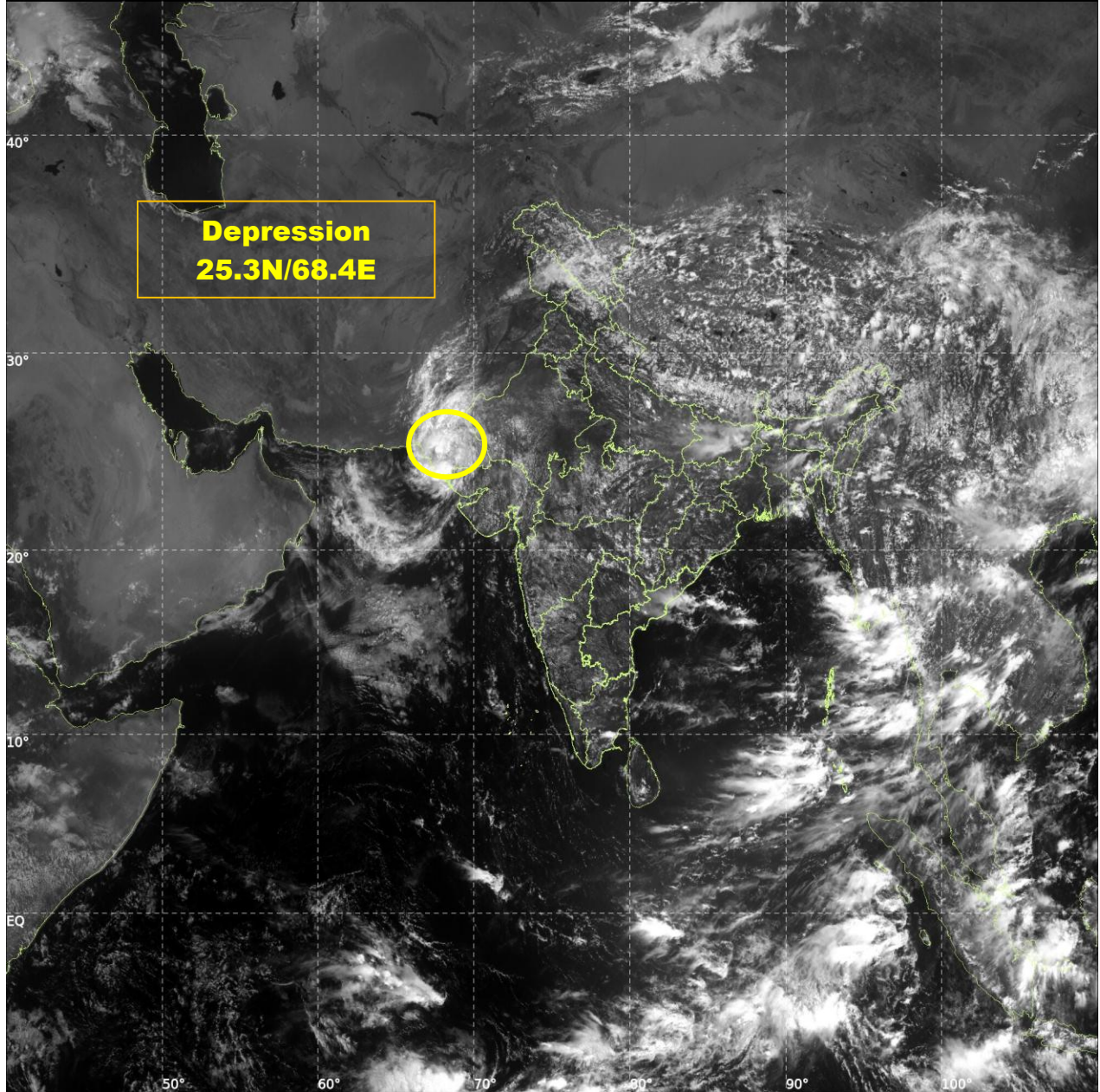


INSAT-3DS IMG, Visible Count @ 0.65 μm
GMT:09-09-2025/(0600-0627) IST:09-09-2025/(1130-1157)
LIC MERCATOR (LINEAR STRETCH: 0.5%)

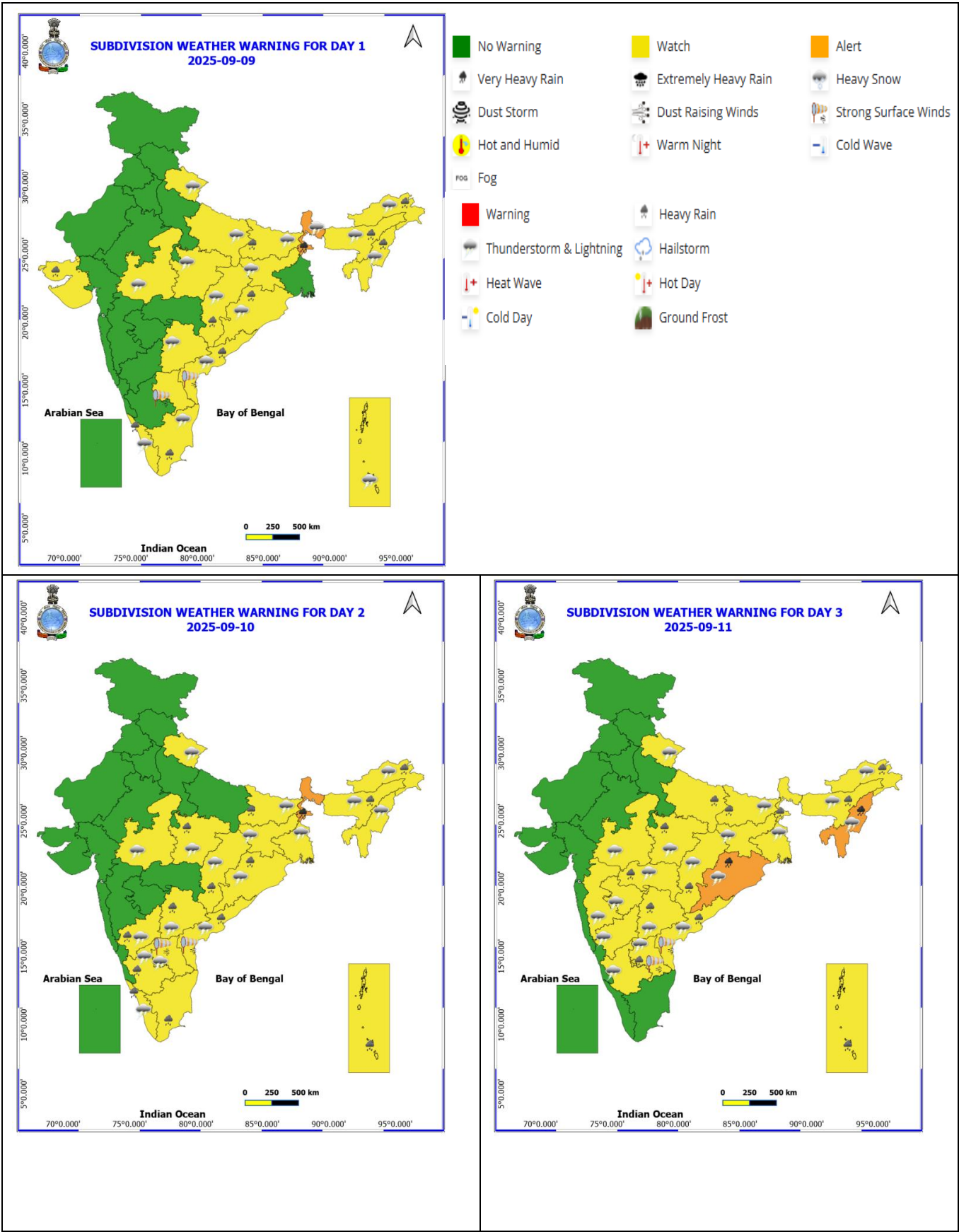
71

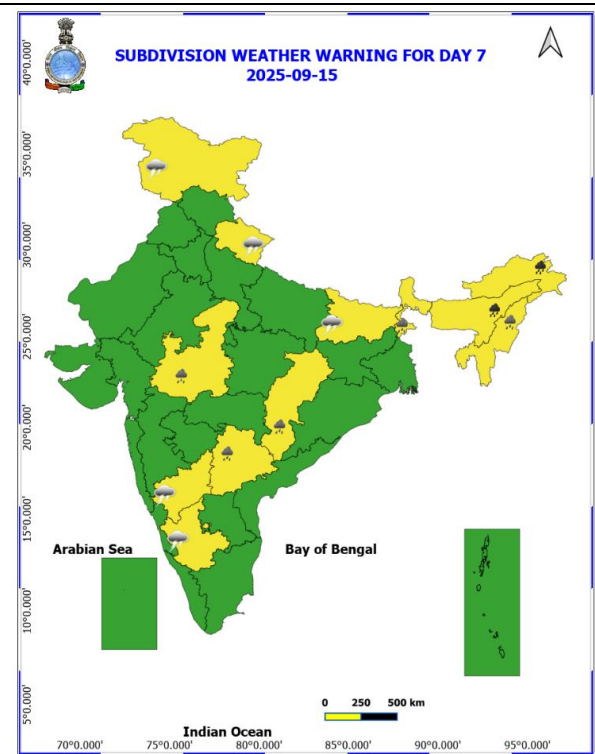
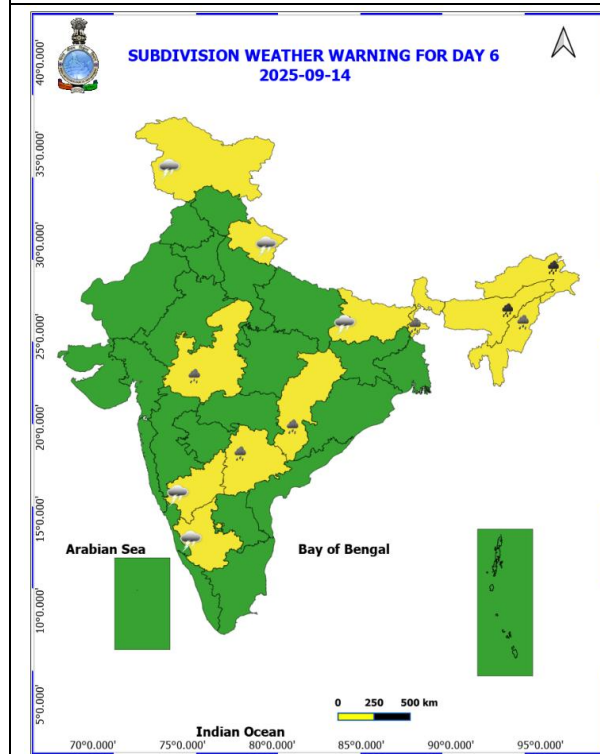
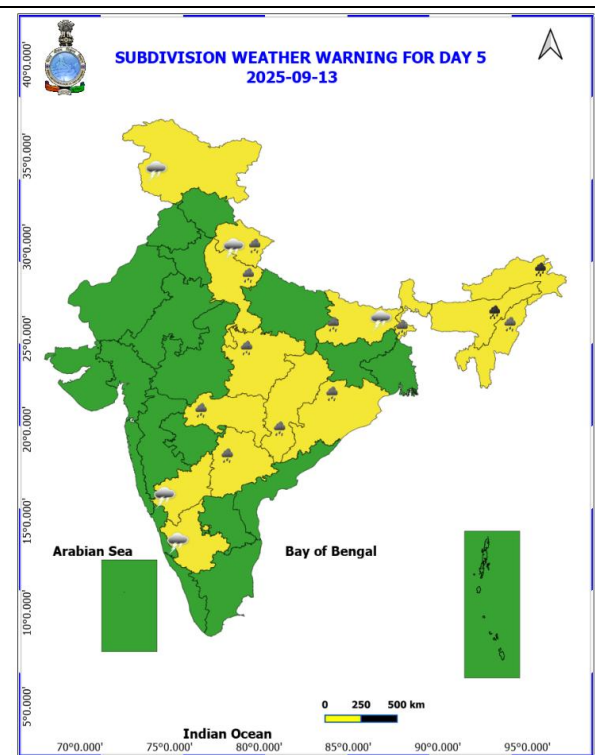
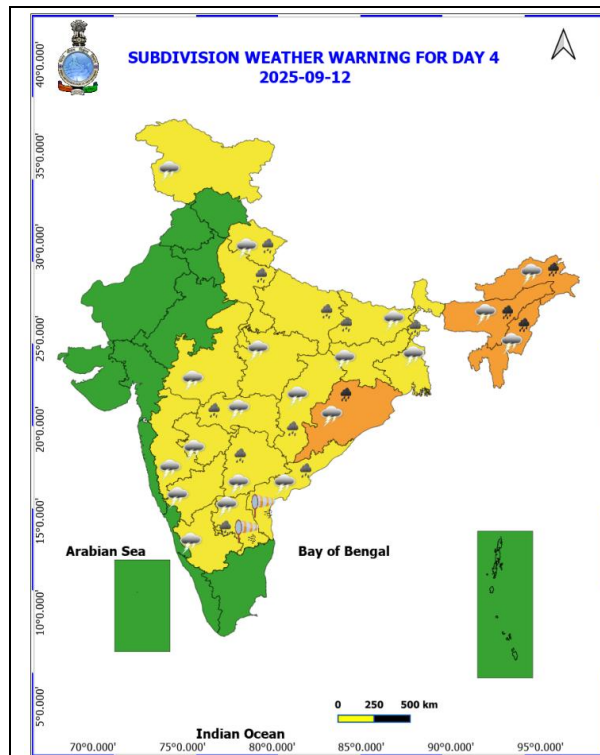
450

Depression
25.3N/68.4E



Weather Warning Graphics





- Action may be taken based on **ORANGE AND RED** COLOUR warnings.
- Vulnerable regions likely urban and hilly areas action may be initiated for heavy rainfall warning.
- As the lead period increases forecast accuracy decreases.

Fishermen Warning Graphics

