



**India Meteorological Department
(Ministry of Earth Sciences)**

BULLETIN NO. 4 (BOB/06/2022)

TIME OF ISSUE: 0115 HOURS IST

DATED: 15.08.2022

FROM: INDIA METEOROLOGICAL DEPARTMENT (FAX NO. 24643965/24699216/24623220)

TO: CONTROL ROOM, NDM, MINISTRY OF HOME AFFAIRS (FAX.NO. 23093750)

CONTROL ROOM NDMA (FAX.NO. 26701729)

CABINET SECRETARIAT (FAX.NO.23012284, 23018638)

PS TO HON'BLE MINISTER FOR S & T AND EARTH SCIENCES (FAX NO.23316745)

SECRETARY, MOES (FAX NO. 24629777)

H.Q. (INTEGRATED DEFENCE STAFF AND CDS) (FAX NO. 23005137/23005147)

DIRECTOR GENERAL, DOORDARSHAN (23385843)

DIRECTOR GENERAL, AIR (23421105, 23421219)

PIB MOES (FAX NO. 23389042)

UNI (FAX NO. 23355841)

D.G. NATIONAL DISASTER RESPONSE FORCE (NDRF) (FAX NO. 26105912, 2436 3260)

DIRECTOR, PUNCTUALITY, INDIAN RAILWAYS (FAX NO. 23388503)

CHIEF SECRETARY, ODISHA (FAX NO. 0674-2536660)

CHIEF SECRETARY, WEST BENGAL (FAX NO. 033-22144328)

CHIEF SECRETARY, TAMILNADU (FAX NO. 044-25672304)

ADMINISTRATOR, ANDAMAN & NICOBAR ISLANDS (FAX NO. 03192- 232656)

CHIEF SECRETARY, PUDUCHERRY (FAX NO 0413-2334145)

CHIEF SECRETARY, ANDHRA PRADESH (FAX NO. 0863-2441029, 08645-246600)

CHIEF SECRETARY, GOVT. OF CHHATTISGARH (FAX NO. 771-2221206)

CHIEF SECRETARY, GOVT. OF JHARKHAND (FAX NO. 651-2400255)

CHIEF SECRETARY, GOVT. OF MADHYA PRADESH (FAX NO. 755-2441076)

Sub: Depression over North Interior Odisha and adjoining North Chhattisgarh and South Jharkhand

The depression over South Jharkhand & adjoining North Odisha moved west-northwestwards with a speed of 34 kmph during last 6 hours and lay centered at 2330 hours IST of 14th August over North Interior Odisha and adjoining North Chhattisgarh and South Jharkhand near latitude 22.2^oN and longitude 84.0^oE about 30 km nearly north-northwest of Jharsiguda (Odisha) and 220 km east-southeast of Pendra Road (Chhattisgarh).

It is very likely to continue to move west-northwestwards and maintain the intensity of depression during next 12 hours.

Warnings:

(i) Rainfall:

Odisha: Rainfall at many places with heavy rainfall at isolated places very likely over western Odisha on 15th August.

Gangetic West Bengal: Light to moderate rainfall at many places likely on 15th August.

Jharkhand: Rainfall at many places with heavy rainfall at isolated places very likely on 15th August.

Chhattisgarh: Rainfall at most places with heavy to very heavy rainfall at isolated places very likely on 15th August.

East Madhya Pradesh: Rainfall at most places with heavy to very heavy rainfall at isolated places very likely on 15th August.

West Madhya Pradesh: Rainfall at most places with heavy to very heavy rainfall with isolated extremely heavy falls on 15th and heavy to very heavy rainfall at isolated places on 16th August.

(ii) Wind:

Squally wind speed reaching 40-50 kmph gusting to 60 kmph is very likely over north and adjoining central Bay of Bengal and along & off Bangladesh, West Bengal, Odisha and adjoining North Andhra Pradesh coasts during next 12 hours and gradually decrease thereafter

(iii) Sea condition

Sea condition is likely to be rough to very rough over north and adjoining central Bay of Bengal and along & off Bangladesh, West Bengal, Odisha and adjoining North Andhra Pradesh coasts during next 12 hours and gradually improve thereafter.

(iii) Fishermen Warning

Fishermen are advised not to venture into north and adjoining central Bay of Bengal and along & off Bangladesh, West Bengal, Odisha and adjoining North Andhra Pradesh coasts on 15th August.

System is under continuous surveillance and the next message will be issued at 0830 hours IST of 15th August, 2022.

(Akhil Srivastava)
Scientist C, Cyclone Warning Division, New Delhi

Copy to: ACWC Mumbai/ ACWC Kolkata/ ACWC Chennai/ CWC Bhubaneswar/CWC Visakhapatnam/CWC Ahmedabad/ MO Port Blair/MC Raipur/MC Bhopal/MC Hyderabad/RMC Nagpur/MC Goa/MC Bengaluru/CWC Thiruvananthapuram

LEGEND: Heavy Rainfall: 64.5 to 115.5mm, **Very Heavy Rainfall:** 115.6 to 204.4mm **Most Places:** more than 76% of total stations, **Isolated Places:** Less than 25% of total



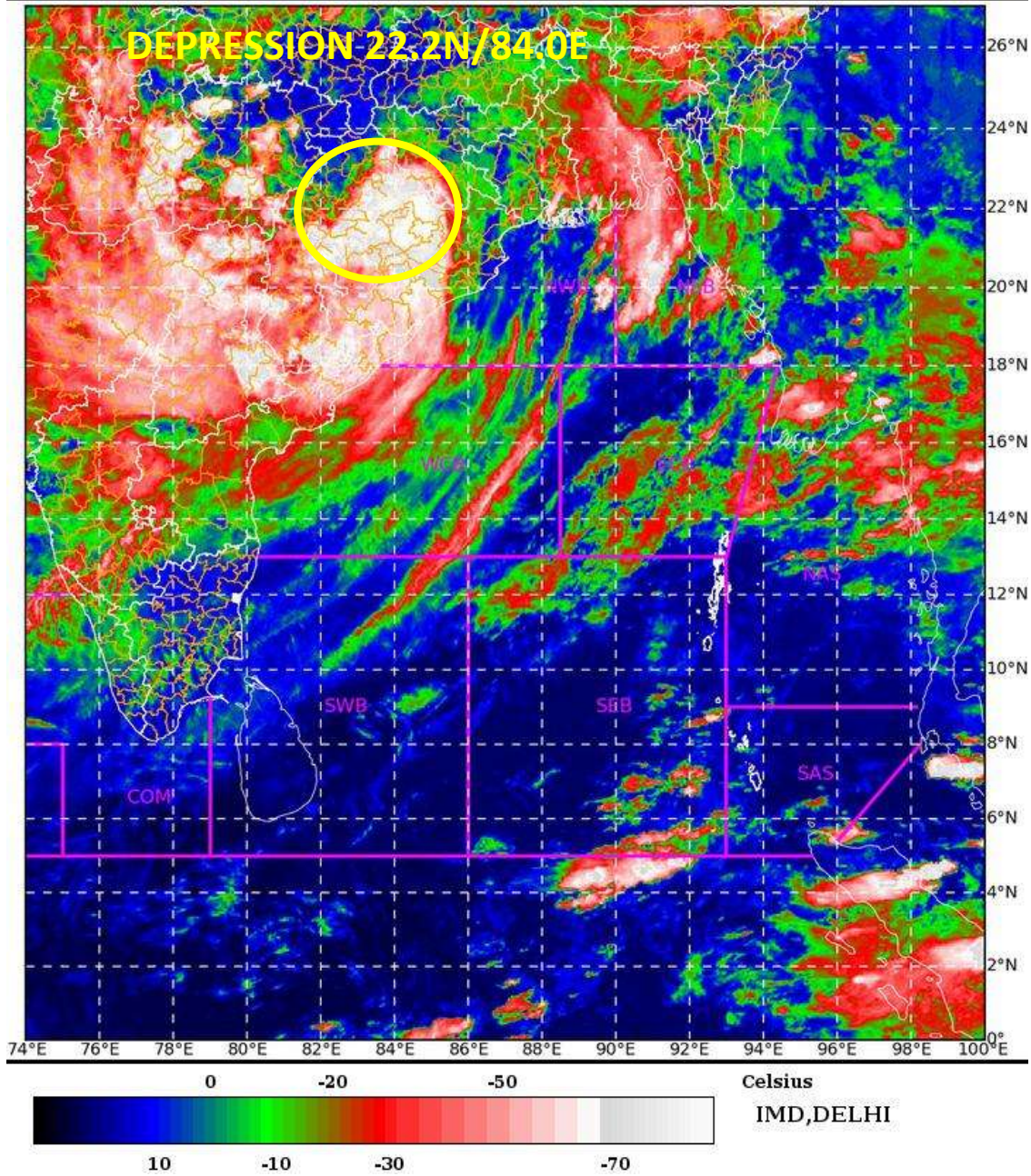
OBSERVED AND FORECAST TRACK OF DEPRESSION OVER NORTH INTERIOR ODISHA AND ADJOINING NORTH CHHATTISGARH & SOUTH JHARKHAND BASED ON 1800 UTC OF 14th AUGUST, 2022



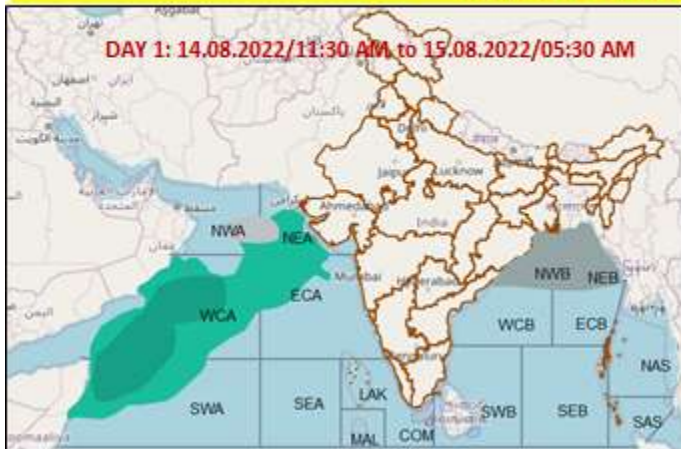
DATE/TIME IN UTC
 IST=UTC + 0530
 L: LOW PRESSURE AREA
 WML: WELL MARKED LOW PRESSURE AREA
 D: DEPRESSION (17-27 KT)
 DD: DEEP DEPRESSION (28-33 KT)
 CS: CYCLONIC STORM (34-47 KT)
 SCS: SEVERE CYCLONIC STORM (48-63KT)
 VSCS: VERY SEVERE CYCLONIC STORM (64-89 KT)
 ESCS: EXTREMELY SEVERE CYCLONIC STORM (90-119 KT)
 SuCS: SUPER CYCLONIC STORM (\geq 120 KT)

- LESS THAN 34 KT
- ⊙ 34-47 KT
- ⊙ \geq 48 KT
- OBSERVED TRACK
- FORECAST TRACK
- ▲ CONE OF UNCERTAINTY

SAT : INSAT-3DR IMG 14-08-2022/(1745 to 1812) GMT
IMG_TIR1_TEMP 10.8 um 14-08-2022/(2315 to 2342) IST
L1C Mercator

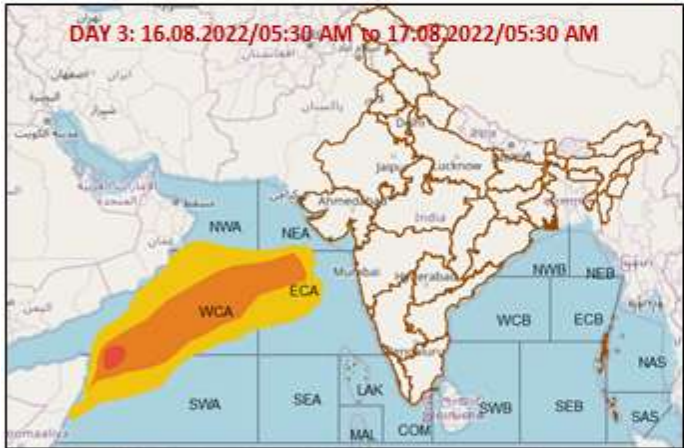
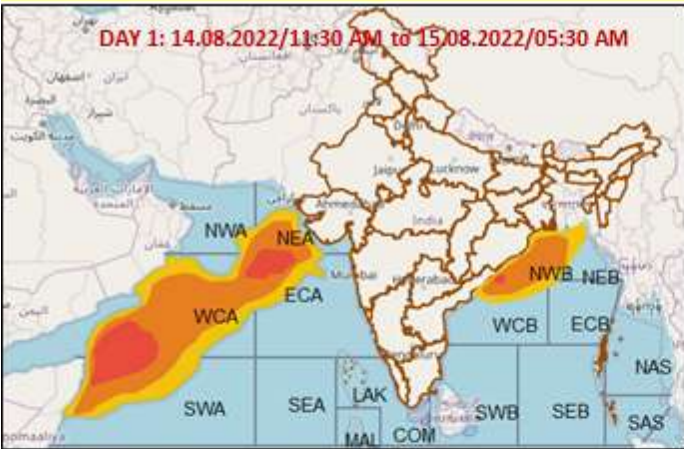


Fishermen Warning Graphics



	Squally WX with wind speed 40-50 gusting to 60 kmph
	Squally WX with wind speed 45-55 gusting to 65 kmph
	Squally wind speed 45-55kmph gusting to 65 kmph
	Squally wind speed 50-60kmph gusting to 70 kmph

Probability of exceedance of maximum sustained winds ≥ 45 kmph



	Probability of exceedance
	Low (1-33%)
	Moderate (34-67%)
	High (68-100%)

WARNING

WARNING (TAKE ACTION)
ALERT (BE PREPARED)
WATCH (BE UPDATED)
NO WARNING (NO ACTION)




 Heavy Rain

 Strong Winds


 Frost

 Heavy Snow

 Visibility

 Cold Wave


 Thunderstorm

 Cyclone

 Heat Wave

 Dust Storm

 Squall/ Hail

 Sea State