



**India Meteorological Department  
(Ministry of Earth Sciences)**

**BULLETIN NO. 2 (BOB/07/2022)**

**TIME OF ISSUE:1500 HOURS IST**

**DATED: 22.10.2022**

**FROM: INDIA METEOROLOGICAL DEPARTMENT (FAX NO. 24643965/24699216/24623220)**

**TO: CONTROL ROOM, NDM, MINISTRY OF HOME AFFAIRS (FAX.NO. 23093750)**

**CONTROL ROOM NDMA (FAX.NO. 26701729)**

**CABINET SECRETARIAT (FAX.NO.23012284, 23018638)**

**PS TO HON'BLE MINISTER FOR S & T AND EARTH SCIENCES (FAX NO.23316745)**

**SECRETARY, MOES (FAX NO. 24629777)**

**H.Q. (INTEGRATED DEFENCE STAFF AND CDS) (FAX NO. 23005137/23005147)**

**DIRECTOR GENERAL, DOORDARSHAN (23385843)**

**DIRECTOR GENERAL, AIR (23421105, 23421219)**

**PIB MOES (FAX NO. 23389042)**

**UNI (FAX NO. 23355841)**

**D.G. NATIONAL DISASTER RESPONSE FORCE (NDRF) (FAX NO. 26105912, 2436 3260)**

**DIRECTOR, PUNCTUALITY, INDIAN RAILWAYS (FAX NO. 23388503)**

**CHIEF SECRETARY, ANDAMAN & NICOBAR ISLANDS (FAX NO. 03192- 232656)**

**CHIEF SECRETARY, GOVT. WEST BENGAL (FAX NO. 033-22144328)**

**CHIEF SECRETARY, GOVT. OF ODISHA (FAX NO. 0674 -2536660)**

**CHIEF SECRETARY, GOVT. OF ASSAM (FAX NO. 0361-2237200)**

**CHIEF SECRETARY, GOVT. OF MEGHALAYA (FAX NO. 0364-2225978)**

**CHIEF SECRETARY, GOVT. OF NAGALAND (FAX NO. 0370-2270057)**

**CHIEF SECRETARY, GOVT. OF MIZORAM (FAX NO. 0389 2322745)**

**CHIEF SECRETARY, GOVT. OF MANIPUR (FAX NO. NA)**

**CHIEF SECRETARY, GOVT. OF TRIPURA (FAX NO. 0381-2414013/ 2351122)**

**CHIED SECRETARY, GOVT. OF ARUNACHAL PRADESH (FAX NO. 0360-2212466, 2215719)**

**CHIEF SECRETARY, GOVT. OF ANDHRA PRADESH (FAX NO. 0863-2441029, 08645-246600)**

**CHIEF SECRETARY, GOVT. OF TAMIL NADU (FAX NO. 044-25672304)**

**CHIEF SECRETARY, GOVT. OF PUDUCHERRY (FAX NO. 0413-2337575, 2334145)**

**Subject: Depression over eastcentral & adjoining southeast Bay of Bengal (Pre-Cyclone Watch: West Bengal coast)**

Depression over southeast adjoining eastcentral Bay of Bengal moved northwestwards with a speed of 40 kmph during past 3 hours and lay centered at 1130 hours IST of today, the 22<sup>nd</sup> October over eastcentral & adjoining southeast Bay of Bengal near latitude 13.7<sup>o</sup>N and longitude 91.4<sup>o</sup>E, about 270 km north-northwest of Port Blair, 950 km south-southeast of Sagar Island and 1010 km south of Barisal (Bangladesh).

It is very likely to move northwestward and intensify further into a Deep Depression over eastcentral and adjoining southeast Bay of Bengal by 23<sup>rd</sup> October morning. Subsequently, it is very likely to recurve gradually north-northeastwards and intensify into a cyclonic storm over central Bay of Bengal by 24th October morning. Thereafter, it would continue to move north-northeastwards and cross Bangladesh coast between Tinkona Island and Sandwip around 25th October early morning.

**Forecast track and intensity are given below:**

<b>Date/Time(IST)</b>	<b>Position (Lat. °N/ long. °E)</b>	<b>Maximum sustained surface wind speed (Kmph)</b>	<b>Category of cyclonic disturbance</b>
22.10.22/1130	13.7/91.4	45-55 gusting to 65	Depression
22.10.22/2330	14.7/89.8	50-60 gusting to 70	Deep Depression
23.10.22/1130	15.9/88.4	55-65 gusting to 75	Deep Depression
23.10.22/2330	17.7/88.2	60-70 gusting to 80	Cyclonic Storm
24.10.22/1130	19.3/88.8	80-90 gusting to 100	Cyclonic Storm
24.10.22/2330	21.1/89.8	90-100 gusting to 110	Severe Cyclonic Storm
25.10.22/1130	22.9/90.8	60-70 gusting to 80	Cyclonic Storm
25.10.22/2330	25.0/92.3	40-50 gusting to 60	Depression

### **Warnings:**

#### **(i) Rainfall (warning graphics enclosed)**

**Andaman and Nicobar Islands:** Light to moderate rainfall at most places with heavy rainfall at isolated places over Andaman & Nicobar Islands during on 22<sup>nd</sup> & 23<sup>rd</sup> October.

**Odisha:** Light to moderate rainfall at many places likely over coastal districts of Odisha on 23<sup>rd</sup> and light to moderate rainfall with isolated heavy rainfall likely over the same region on 24<sup>th</sup> and isolated heavy rainfall over north coastal Odisha districts on 25<sup>th</sup> October

**West Bengal:** Light to moderate rainfall at a few places likely over coastal districts of West Bengal on 23<sup>rd</sup>. Light to moderate rainfall with isolated heavy rainfall on 24<sup>th</sup> and heavy to very heavy rainfall at isolated places on 25<sup>th</sup> likely over coastal districts.

#### **Northeastern States:**

Light to moderate rainfall at most places with heavy to very heavy rainfall at isolated places over south Assam, East Meghalaya, Nagaland, Mizoram, Manipur & Tripura on 24<sup>th</sup> October. Light to moderate rainfall at most places with isolated heavy to very heavy rainfall over the same region and isolated extremely heavy rainfall over Tripura & Mizoram likely over the same region on 25<sup>th</sup> and isolated heavy rainfall likely on 26<sup>th</sup> October.

#### **(ii) Wind warning:**

**22<sup>nd</sup> October:** Squally weather with wind speed reaching 45-55 kmph gusting to 65 kmph is very likely over eastcentral & adjoining southeast Bay of Bengal, Andaman Islands and Andaman Sea.

**23<sup>rd</sup> October:** Squally wind speed reaching 55-65 kmph gusting to 75 kmph is very likely over westcentral and adjoining eastcentral & southeast Bay of Bengal from morning. It would gradually increase becoming 65-75 kmph gusting to 85 kmph from 23<sup>rd</sup> evening. Squally wind speed reaching 35-45 kmph gusting to 55 kmph is very likely along & off Odisha and West Bengal coasts and Andaman Islands and adjoining north Andaman Sea.

**24<sup>th</sup> October:** Gale wind speed reaching 70-80 kmph gusting to 90 kmph is likely over westcentral and adjoining areas of eastcentral & north Bay of Bengal. Squally wind speed reaching 45-55 kmph gusting to 65 kmph is very likely along & off Odisha and West Bengal coasts.

**25<sup>th</sup> October:** Gale wind speed reaching 90-100 kmph gusting to 110 kmph is likely over north and adjoining central Bay of Bengal and along & off Bangladesh coast; 80-90 kmph gusting to 100 kmph likely along & off 24 Parganas District and 60-70 kmph gusting to 80 kmph along & off

east Medinipur district off West Bengal coast. Squally wind speed reaching 50-60 kmph gusting to 70 kmph likely along and off Balasore district & 45-55 kmph gusting to 65 kmph along & off remaining north coastal districts of Odisha and over Mizoram & Tripura.

**(iii) Sea condition**

**22<sup>nd</sup> October:** Rough to very rough over eastcentral & adjoining southeast Bay of Bengal & north Andaman Sea.

**23<sup>rd</sup> October:** Very rough over westcentral and adjoining eastcentral & southeast Bay of Bengal from morning. It would become high from evening over westcentral and adjoining eastcentral Bay of Bengal. Rough along & off Odisha-West Bengal-Bangladesh coasts.

**24<sup>th</sup> October:** High over westcentral and adjoining eastcentral & north Bay of Bengal. Rough to very rough along & off Odisha-West Bengal-Bangladesh coasts.

**25<sup>th</sup> October:** High over north Bay of Bengal along & off Bangladesh-West Bengal coasts.

**(iv) Fishermen Warning (warning graphics enclosed)**

Fishermen are advised not to venture into southeast & adjoining eastcentral Bay of Bengal & North Andaman Sea on 22<sup>nd</sup>; central Bay of Bengal on 23<sup>rd</sup>, central & adjoining north Bay of Bengal on 24<sup>th</sup>, north & adjoining central Bay of Bengal on 25<sup>th</sup> October, 2022.

Fishermen are advised not to venture into Sea along and off Odisha, West Bengal & Bangladesh coasts during 23<sup>rd</sup> to 25<sup>th</sup> October. Fishermen out at sea are advised to return to the coast.

**(v) Advisory for On-shore and Off-shore Installations**

Regulation of offshore activities from 22<sup>nd</sup> over central and North Bay of Bengal till 25<sup>th</sup> and over Andaman Sea till 23<sup>rd</sup>. Suspension of off-shore activities during 24<sup>th</sup> to 25<sup>th</sup> October along and off Odisha and West Bengal coasts.

**The system is under continuous surveillance and the next message will be issued at 2030 hours IST of today, the 22<sup>nd</sup> October, 2022.**

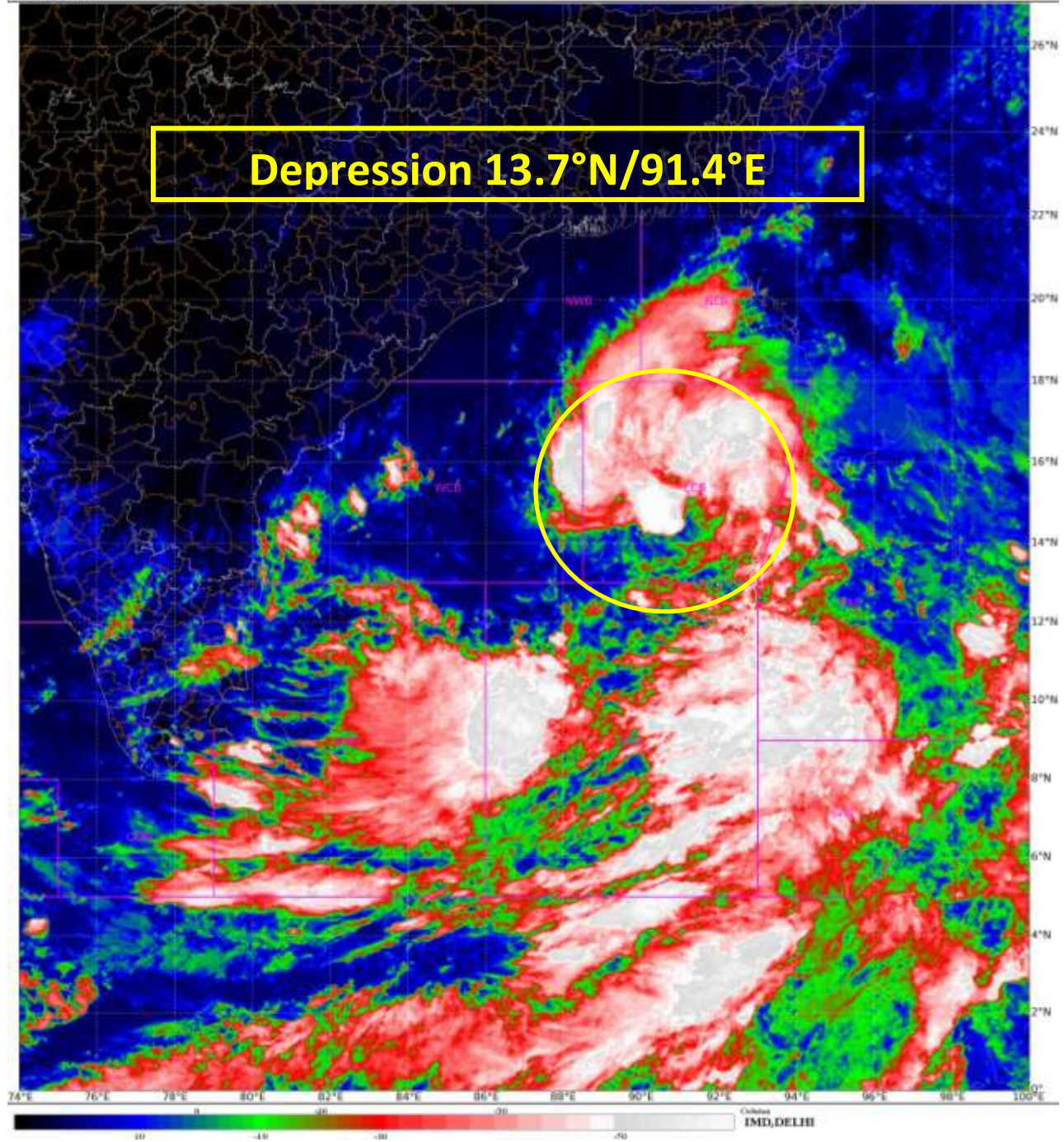
**(Ananda Kumar Das)**  
**Scientist E, Cyclone Warning, New Delhi**

*Copy to: ACWC Kolkata/ ACWC Chennai/ CWC Bhubaneswar/CWCVisakhapatnam/MO Port Blair*

**LEGEND: Heavy Rainfall:** 64.5 to 115.5mm, **Very Heavy Rainfall:** 115.6 to 204.4mm **Most Places:** more than 76% of total stations, **Isolated Places:** Less than 25% of total



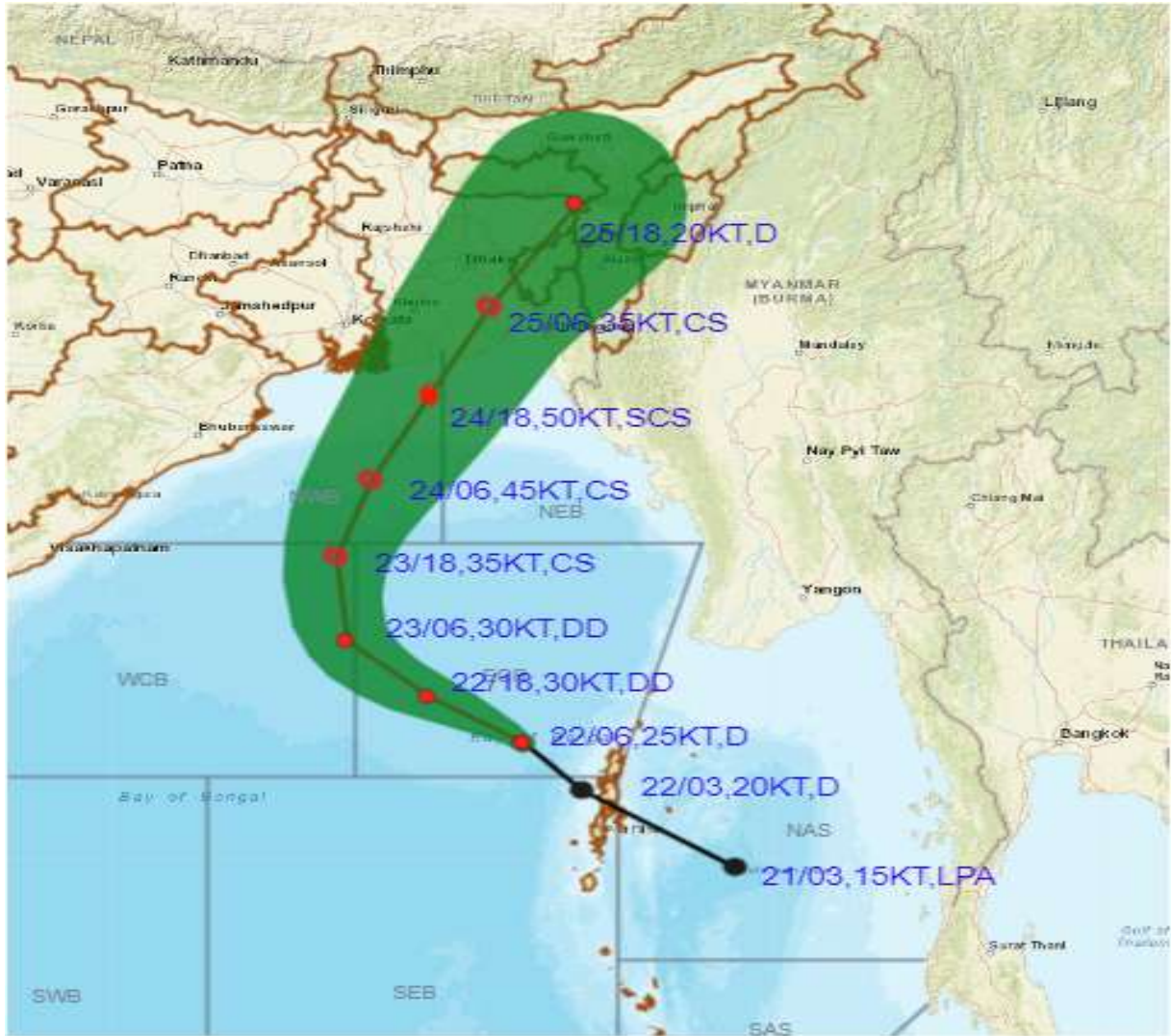
**Depression 13.7°N/91.4°E**







**OBSERVED AND FORECAST TRACK ALONGWITH CONE OF UNCERTAINTY OF DEPRESSION OVER EASTCENTRAL AND ADJOINING SOUTHEAST BAY OF BENGAL BASED ON 0600 UTC OF 22<sup>nd</sup> OCTOBER, 2022**



DATE/TIME IN UTC

IST=UTC + 0530

L: LOW PRESSURE AREA

WML: WELL MARKED LOW PRESSURE AREA

D: DEPRESSION (17-27 KT)

DD: DEEP DEPRESSION (28-33 KT)

CS: CYCLONIC STORM (34-47 KT)

SCS: SEVERE CYCLONIC STORM (48-63KT)

VSCS: VERY SEVERE CYCLONIC STORM (64-89 KT)

ESCS: EXTREMELY SEVERE CYCLONIC STORM (90-119 KT)

SuCS: SUPER CYCLONIC STORM ( $\geq 120$  KT)

● LESS THAN 34 KT

⊖ 34-47 KT

⊖  $\geq 48$  KT

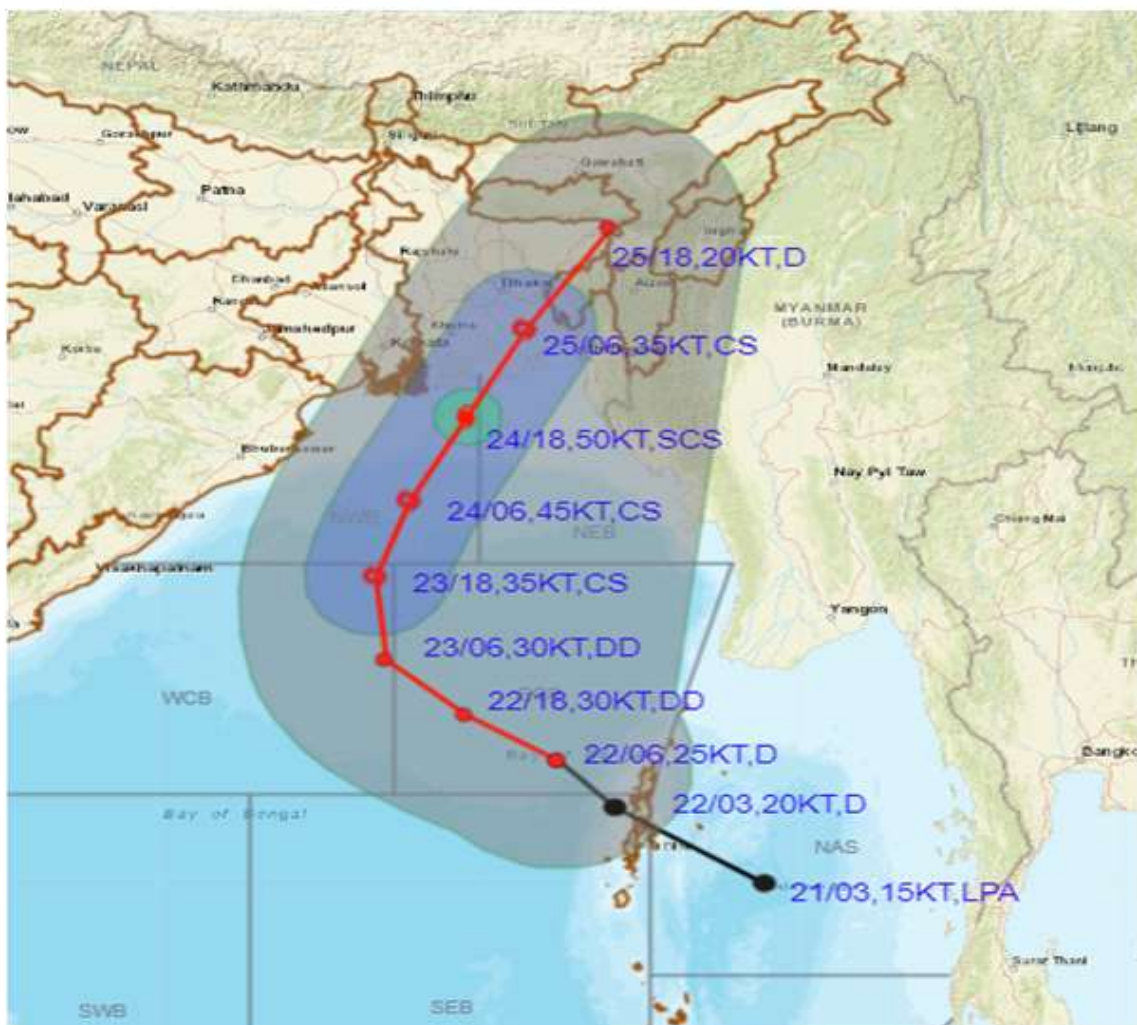
— OBSERVED TRACK

— FORECAST TRACK

▲ CONE OF UNCERTAINTY



**OBSERVED AND FORECAST TRACK ALONGWITH CONE OF UNCERTAINTY OF DEPRESSION OVER EASTCENTRAL AND ADJOINING SOUTHEAST BAY OF BENGAL BASED ON 0600 UTC OF 22<sup>nd</sup> OCTOBER, 2022**



**DATE/TIME IN UTC**

IST=UTC + 0530

L: LOW PRESSURE AREA

WML: WELL MARKED LOW PRESSURE AREA

D: DEPRESSION (17-27 KT)

DD: DEEP DEPRESSION (28-33 KT)

CS: CYCLONIC STORM (34-47 KT)

SCS: SEVERE CYCLONIC STORM (48-63KT)

VSCS: VERY SEVERE CYCLONIC STORM (64-89 KT)

ESCS: EXTREMELY SEVERE CYCLONIC STORM (90-119 KT)

SuCS: SUPER CYCLONIC STORM (≥ 120 KT)

● LESS THAN 34 KT

○ 34-47 KT

● ≥ 48 KT

— OBSERVED TRACK

— FORECAST TRACK

● CONE OF UNCERTAINTY

**AREA OF MAXIMUM SUSTAINED WIND SPEED:**

■ 28-33 KT (52-61 KMPH)

■ 34-49 KT (62-91 KMPH)

■ 50-63 KT (92-117 KMPH)

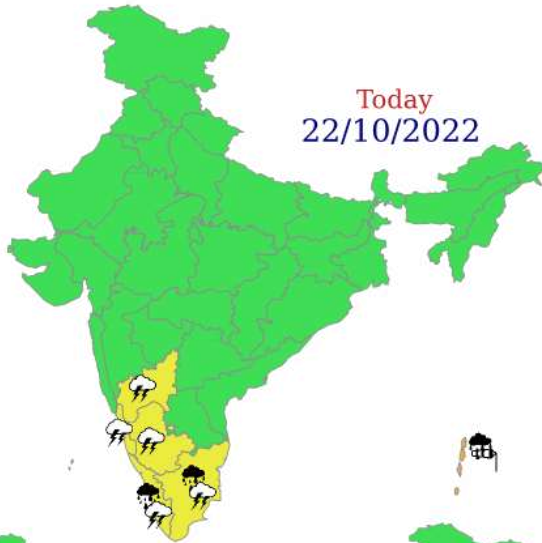
■ ≥ 64 KT (≥118 KMPH)

**IMPACT OVER THE SEA**

MSW (knot/kmph)	Impact	Action
28-33 (52-61)	Very rough seas	Total suspension of fishing operations
34-49 (62-91)	High to very high seas	Total suspension of fishing operations
50-63 (92-117)	Very high seas	Total suspension of fishing operations
≥ 64 (≥118)	Phenomenal	Total suspension of fishing operations



Today  
22/10/2022



**WARNING**



Tomorrow  
23/10/2022



24/10/2022



25/10/2022



26/10/2022



Heavy Rain



Heavy Snow



Thunderstorm



Dust Storm



Strong Winds



Visibility



Cyclone



Squall/ Hail



Frost



Cold Wave



Heat Wave



Sea State

## Fishermen warning graphics

**Day 1: 22.10.2022/11:30 AM to 23.10.2022/05:30 AM**



**Day 2: 23.10.2022/05:30 AM to 24.10.2022/05:30 AM**



**Day 3: 24.10.2022/05:30 AM to 25.10.2022/05:30 AM**



**Day 4: 25.10.2022/05:30 AM to 26.10.2022/05:30 AM**



**Day 5: 26.10.2022/05:30 AM to 27.10.2022/05:30 AM**



	Squally WX with wind speed 40-45 kmph gusting to 55 kmph
	Squally WX with wind speed 45-55 kmph gusting to 65 kmph
	Squally wind speed with wind speed 45-55 kmph gusting to 65 kmph
	Squally wind speed with wind speed 50-60 kmph gusting to 70 kmph
	Gale wind speed with wind speed 65-75 kmph gusting to 85 kmph
	Gale wind speed with wind speed 80-90 kmph gusting to 100 kmph
	Gale wind speed with wind speed 90-100 kmph gusting to 110 kmph

**Fishermen are advised not to venture into the marked areas.**