



India Meteorological Department  
(Ministry of Earth Sciences)

BULLETIN NO. 61 (ARB/01/2023)

TIME OF ISSUE: 2310 HOURS IST

DATED: 13.06.2023

FROM: INDIA METEOROLOGICAL DEPARTMENT (FAX NO. 24643965/24699216/24623220)

TO: CONTROL ROOM, NDM, MINISTRY OF HOME AFFAIRS (FAX.NO. 23093750)  
CONTROL ROOM NDMA (FAX.NO. 26701729)  
CABINET SECRETARIAT (FAX.NO.23012284, 23018638)  
PS TO HON'BLE MINISTER FOR S & T AND EARTH SCIENCES (FAX NO.23316745)  
SECRETARY, MOES (FAX NO. 24629777)  
H.Q. (INTEGRATED DEFENCE STAFF AND CDS) (FAX NO. 23005137/23005147)  
DIRECTOR GENERAL, DOORDARSHAN (23385843)  
DIRECTOR GENERAL, AIR (23421105, 23421219)  
PIB MOES (FAX NO. 23389042)  
UNI (FAX NO. 23355841)  
D.G. NATIONAL DISASTER RESPONSE FORCE (NDRF) (FAX NO. 26105912, 2436 3260)  
DIRECTOR, PUNCTUALITY, INDIAN RAILWAYS (FAX NO. 23388503)  
CHIEF SECRETARY, KERALA (FAX NO. 0471-2327176)  
ADMINISTRATOR, LAKSHADWEEP ISLANDS (FAX NO. 0413-262184)  
CHIEF SECRETARY, TAMILNADU (FAX NO. 044-25672304)  
CHIEF SECRETARY, GOA (FAX NO. 0832-2415201)  
CHIEF SECRETARY, KARNATAKA (FAX NO. 080-22258913)  
CHIEF SECRETARY, MAHARASHTRA (FAX NO. 022- 22028594)  
CHIEF SECRETARY, GUJARAT (FAX NO. 079-23250305)  
CHIEF SECRETARY, DAMAN & DIU (FAX NO. 0260-2230775)  
CHIEF SECRETARY, DADRA & NAGAR HAVELI (FAX NO. 0260-2645466)

**Sub: Very Severe Cyclonic Storm “Biparjoy” (pronounced as “Biporjoy”) over  
Northeast Arabian Sea: Cyclone Warning for Saurashtra & Kutch Coasts  
(Orange Message)**

The Very Severe Cyclonic Storm “Biparjoy” (pronounced as “Biporjoy”) over Northeast Arabian Sea moved nearly north-northwestwards with a speed of 5 kmph during past 6-hours and lay centered at 2030 hours IST of today, the 13<sup>th</sup> June, 2023 over the same region near latitude 21.4°N and longitude 66.4°E, about 300 km west-southwest of Devbhumi Dwarka, 340 km west of Porbandar, 310 km southwest of Jakhau Port (Gujarat), 330 km southwest of Naliya and 400 km south of Karachi (Pakistan).

It is very likely to move nearly northwards till 13<sup>th</sup> midnight, then move north-northeastwards and cross Saurashtra & Kutch and adjoining Pakistan coasts between Mandvi (Gujarat) and Karachi (Pakistan) near Jakhau Port (Gujarat) by evening of 15<sup>th</sup> June as a very severe cyclonic storm with maximum sustained wind speed of 125-135 kmph gusting to 150 kmph.

**Forecast track and intensity are given below:**

<b>Date/Time(IST)</b>	<b>Position (Lat. °N/ long. °E)</b>	<b>Maximum sustained surface wind speed (Kmph)</b>	<b>Category of cyclonic disturbance</b>
13.06.23/2030	21.4/66.4	150-160 Gusting To 180	Very Severe Cyclonic Storm
13.06.23/2330	21.6/66.4	150-160 Gusting To 180	Very Severe Cyclonic Storm
14.06.23/0530	21.9/66.6	145-155 Gusting To 170	Very Severe Cyclonic Storm
14.06.23/1130	22.2/66.8	140-150 Gusting To 165	Very Severe Cyclonic Storm
14.06.23/1730	22.5/67.1	135-145 Gusting To 160	Very Severe Cyclonic Storm
15.06.23/0530	23.1/67.9	130-140 Gusting To 155	Very Severe Cyclonic Storm
15.06.23/1730	23.6/68.7	120-130 Gusting To 145	Very Severe Cyclonic Storm
16.06.23/0530	24.2/69.8	90-100 Gusting To 110	Severe Cyclonic Storm
16.06.23/1730	24.8/71.0	50-60 Gusting To 70	Deep Depression
17.06.23/0530	25.3/72.3	30-40 Gusting To 50	Well Marked Low Pressure Area

**(i) Heavy Rainfall warning:**

- Light to moderate rainfall at many places in Kachchh, Devbhumi Dwarka, Porbandar, Jamnagar, Junagarh and Rajkot districts of Saurashtra & Kutch with isolated heavy to very heavy rainfall on 13<sup>th</sup> June.
- Light to moderate rainfall at most places with heavy to very heavy rainfall and extremely heavy falls at isolated places very likely over Kachchh, Devbhumi Dwarka, Porbandar, Jamnagar, Rajkot, Junagarh and Morbi districts of Saurashtra & Kutch on 14<sup>th</sup> June.
- The intensity of rainfall would increase with heavy to very heavy rainfall at a few places and extremely heavy falls at isolated places very likely over Kachchh, Devbhumi Dwarka & Jamnagar and heavy to very heavy rainfall at a few places over Porbandar, Rajkot, Morbi & Junagarh districts of Gujarat and Isolated heavy to very heavy rainfall is very likely over remaining districts of Saurashtra and north Gujarat region on 15<sup>th</sup> June.
- Light to moderate rainfall at most places with heavy to extremely heavy rainfall at isolated places very likely over north Gujarat and adjoining south Rajasthan on 16<sup>th</sup> June.

**(ii) Wind warning:**

**Northeast Arabian Sea:** Gale wind speed reaching 150-160 kmph gusting to 180 kmph prevailing over the region likely to decrease becoming 125-135 kmph gusting 150 kmph during 15<sup>th</sup> morning to evening. It would weaken gradually further more thereafter becoming 45-55 kmph gusting to 65 kmph by 16<sup>th</sup> morning.

**Eastcentral Arabian Sea:** Gale wind speed reaching 130-150 kmph gusting to 165 kmph prevailing over the region likely to decrease becoming 90-100 kmph gusting to 110 kmph on 14<sup>th</sup> morning and 40-50 kmph gusting to 60 kmph on 16<sup>th</sup> morning.

**Wind warning along & off Saurashtra & Kutch coasts (Kachchh, Devbhumi Dwarka, Porbandar, Jamnagar, Rajkot, Junagarh and Morbi districts) including Gulf of Kutch:**

- Squally wind speed reaching 50-60 kmph gusting to 70 kmph prevailing over these regions and likely to continue till 13<sup>th</sup> midnight.
- It would increase becoming Gale wind speed reaching 65-75 kmph gusting to 85 kmph from 14<sup>th</sup> June morning along & off Porbandar & Devbhoomi Dwarka district coasts.
- It would become 125-135 kmph gusting to 150 kmph from 15<sup>th</sup> morning for subsequent 12 hours along & off Kachchh, Devbhumi Dwarka, Porbandar, Jamnagar, Rajkot, Junagarh and Morbi districts. Thereafter it would decrease gradually becoming 85-95 kmph gusting to 105 kmph over Kachchh and adjoining districts of Saurashtra & Kutch by 16<sup>th</sup> morning and 45-55 kmph gusting to 65 kmph by 16<sup>th</sup> noon.
- Squally wind speed reaching 55-65 kmph gusting to 75 kmph very likely to prevail along & off remaining districts of Saurashtra coast on 14<sup>th</sup> & 15<sup>th</sup> June and 30-40 kmph gusting to 50 kmph during 16<sup>th</sup> morning to evening.

## **Wind Warning for South Rajasthan**

- Squally wind speed reaching 45-55 kmph gusting to 65 kmph is likely over South Rajasthan during 16<sup>th</sup> noon to evening.

### **(iii) Sea condition**

Sea condition will be phenomenal over northeast and adjoining eastcentral Arabian Sea till 15<sup>th</sup> evening and rough to very rough over adjoining northwest Arabian Sea and rest parts of eastcentral Arabian Sea during the same period.

### **Along & off Saurashtra & Kutch coasts:**

Sea condition is likely to be rough to very rough till 14<sup>th</sup> morning and high to phenomenal thereafter till 15<sup>th</sup> June evening and would improve thereafter.

### **(iv) Storm Surge Warning (Kachchh, Devbhumi Dwarka, Porbandar, Jamnagarh and Morbi districts)**

Storm surge of about 2 -3 m above the astronomical tide is likely to inundate the low lying areas of above districts during the time of landfall. The astronomical tides along these districts could be upto 3-6 meters in different places.

### **(v) Damage expected over Kachchh, Devbhumi Dwarka, Porbandar, Jamnagar, Morbi & Junagarh & Rajkot districts of Gujarat on 15<sup>th</sup> June:**

- Total destruction of thatched houses/ extensive damage to kutcha houses. Some damage to Pucca houses.
- Potential threat from flying objects.
- Bending/ uprooting of power and communication poles.
- Major damage to Kutcha and Pucca roads. Flooding of escape routes. Disruption of railways, overhead power lines and signalling systems.
- Widespread damage to standing crops, plantations, orchards, falling of green coconuts and tearing of palm fronds. Blowing down of bushy trees like mango.
- Small boats, country crafts may get detached from moorings.
- Visibility severely affected due to salt spray.

### **(vi) Fishermen Warning & Action Suggested (Kachchh, Devbhumi Dwarka, Porbandar, Jamnagar, Rajkot, Junagarh and Morbi districts) and for Offshore & Onshore Industries (Graphics Attached):**

- Total suspension of fishing operations over eastcentral and adjoining Westcentral Arabian Sea till 15<sup>th</sup> June and over northeast Arabian Sea during 13<sup>th</sup> -15<sup>th</sup> June
- Those out at sea are advised to return to coast.
- Judicious regulation of offshore and onshore activities.
- Ports along the west coast of India may take necessary precautions.
- Naval base operations may maintain necessary precautions.
- Movement in motor boats and small ships all & off these coasts to be avoided.
- Mobilise evacuation from coastal areas of Saurashtra and Kutch (Kachchh, Devbhumi Dwarka, Porbandar, Jamnagar, Rajkot, Junagarh and Morbi districts).
- Judicious regulation of rail and road traffic.
- People in affected areas to remain indoors.
- Tourism activities may be restricted over these areas.
- Preparatory actions before the cyclones.

**The system is under continuous surveillance and the next message will be issued at 0230 hours IST of tomorrow, the 14<sup>th</sup> June, 2023.**

**(M. T. Bushair)**

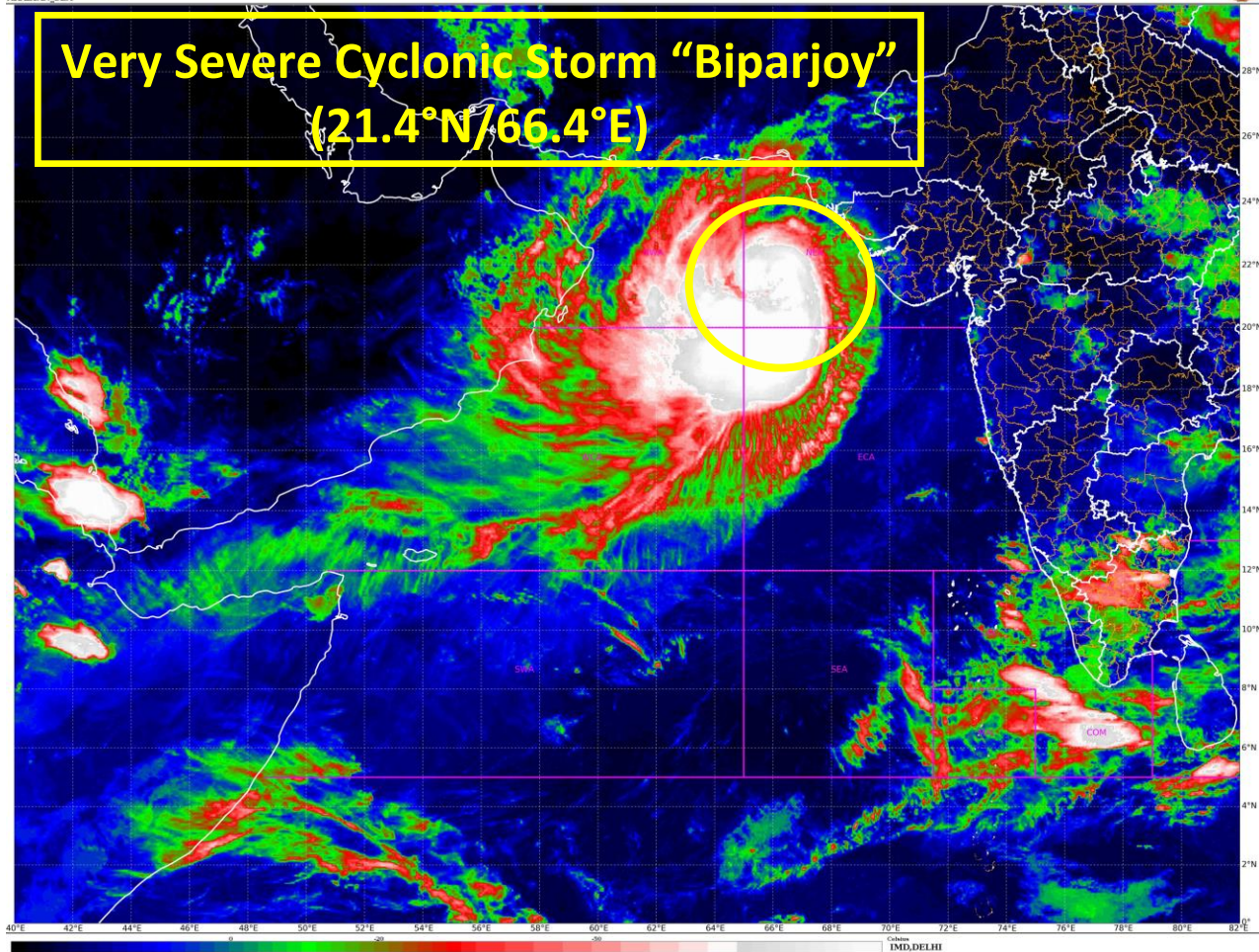
**Scientist C, Cyclone Warning Division, New Delhi**

*Copy to: ACWC Kolkata/ ACWC Chennai/ CWC Bhubaneswar/CWC Visakhapatnam/CWC Ahmedabad/ MO Port Blair/MC Raipur/MC Bhopal/MC Hyderabad/RMC Nagpur*

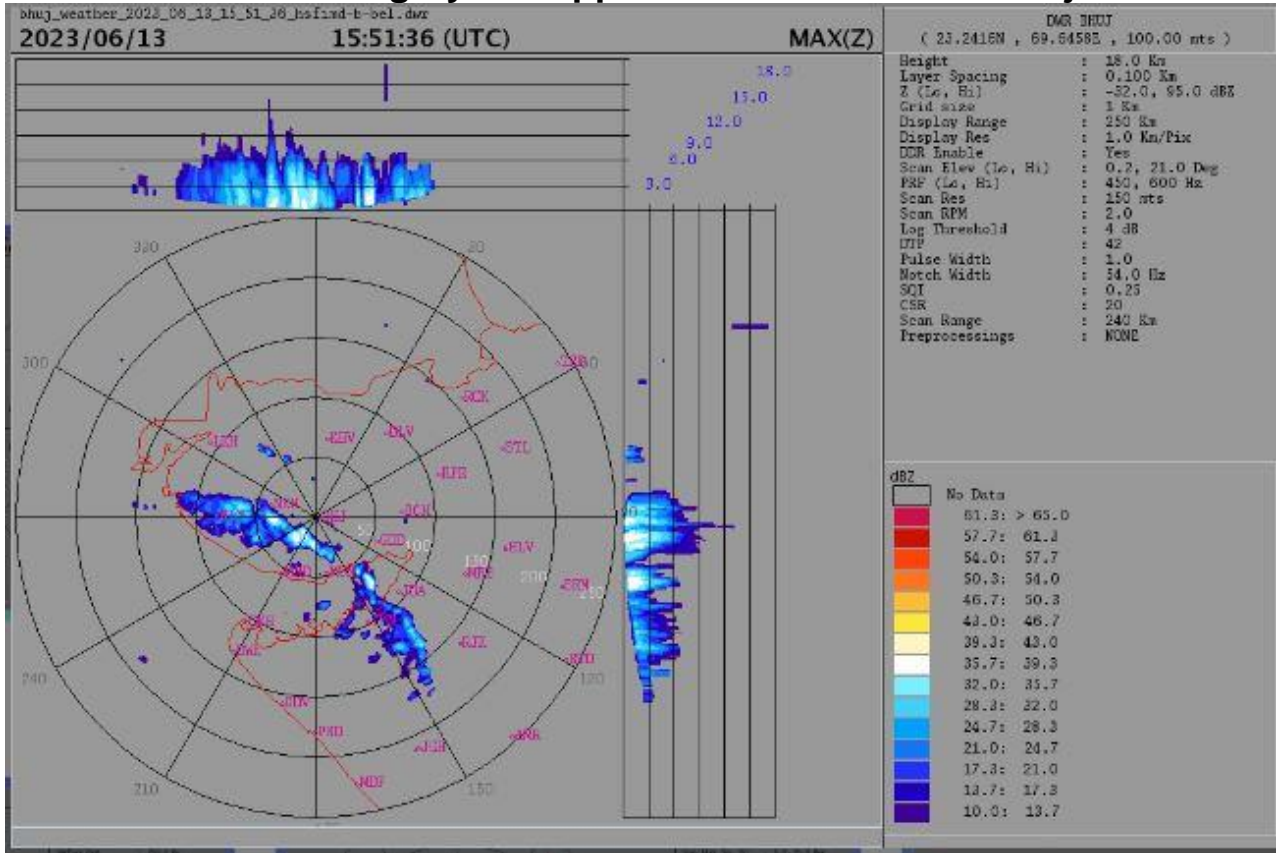
**LEGEND: Heavy Rainfall: 64.5 to 115.5mm, Very Heavy Rainfall: 115.6 to 204.4mm Most Places: more than 76% of total stations, Isolated Places: Less than 25% of total**

SAT : INSAT-3D IMG  
IMG\_TIR1\_TEMP 10.8 um  
ARABIAN SEA

13-06-2023(1530 to 1556) GMT  
13-06-2023(2100 to 2126) IST

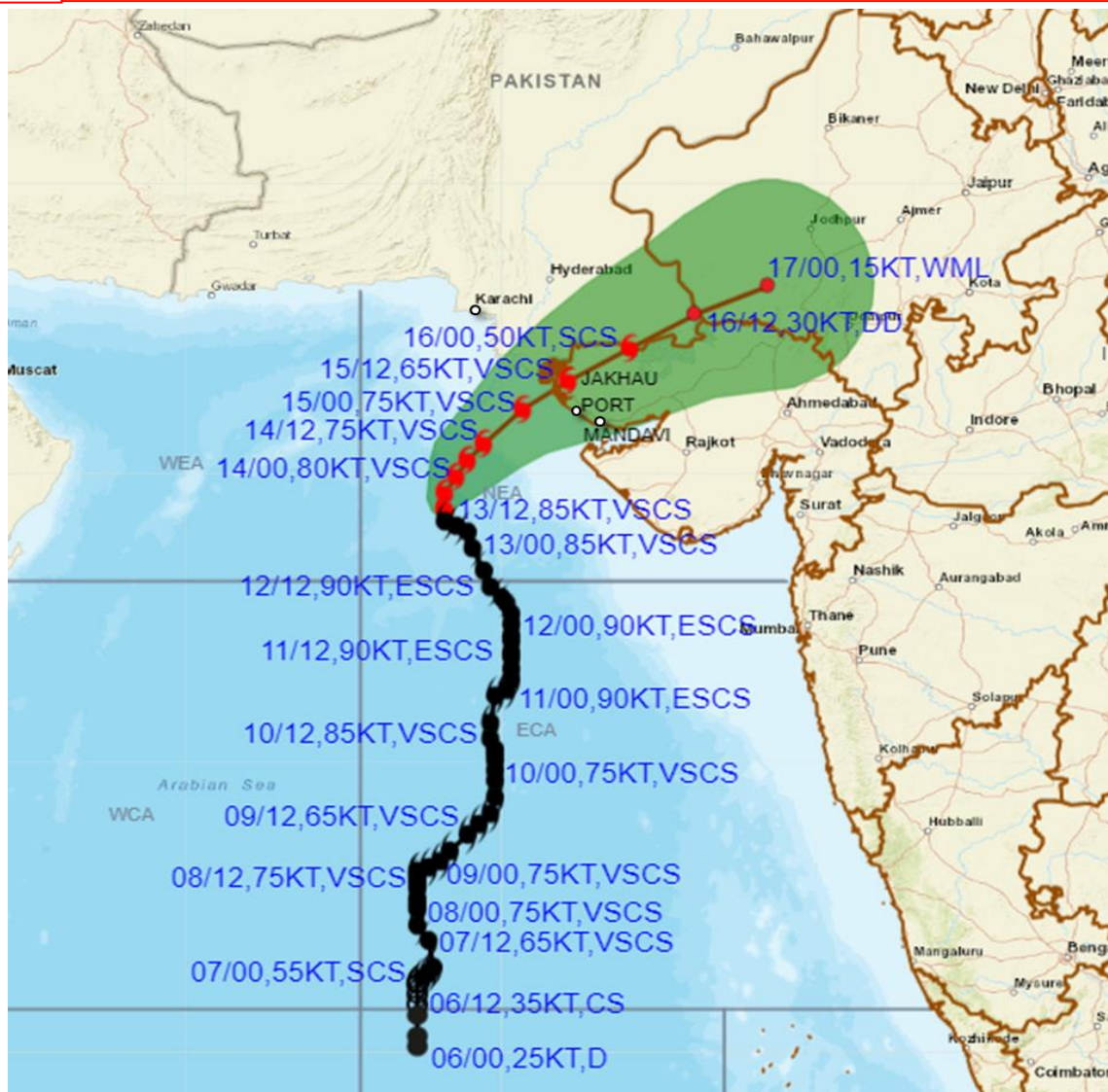


# Radar Imagery of Doppler Weather Radar at Bhuj





**OBSERVED AND FORECAST TRACK ALONGWITH CONE OF UNCERTAINTY OF VERY SEVERE CYCLONIC STORM "BIPARJOY" OVER NORTHEAST ARABIAN SEA BASED ON 1200 UTC (1730 IST) OF 13<sup>TH</sup> JUNE 2023.**



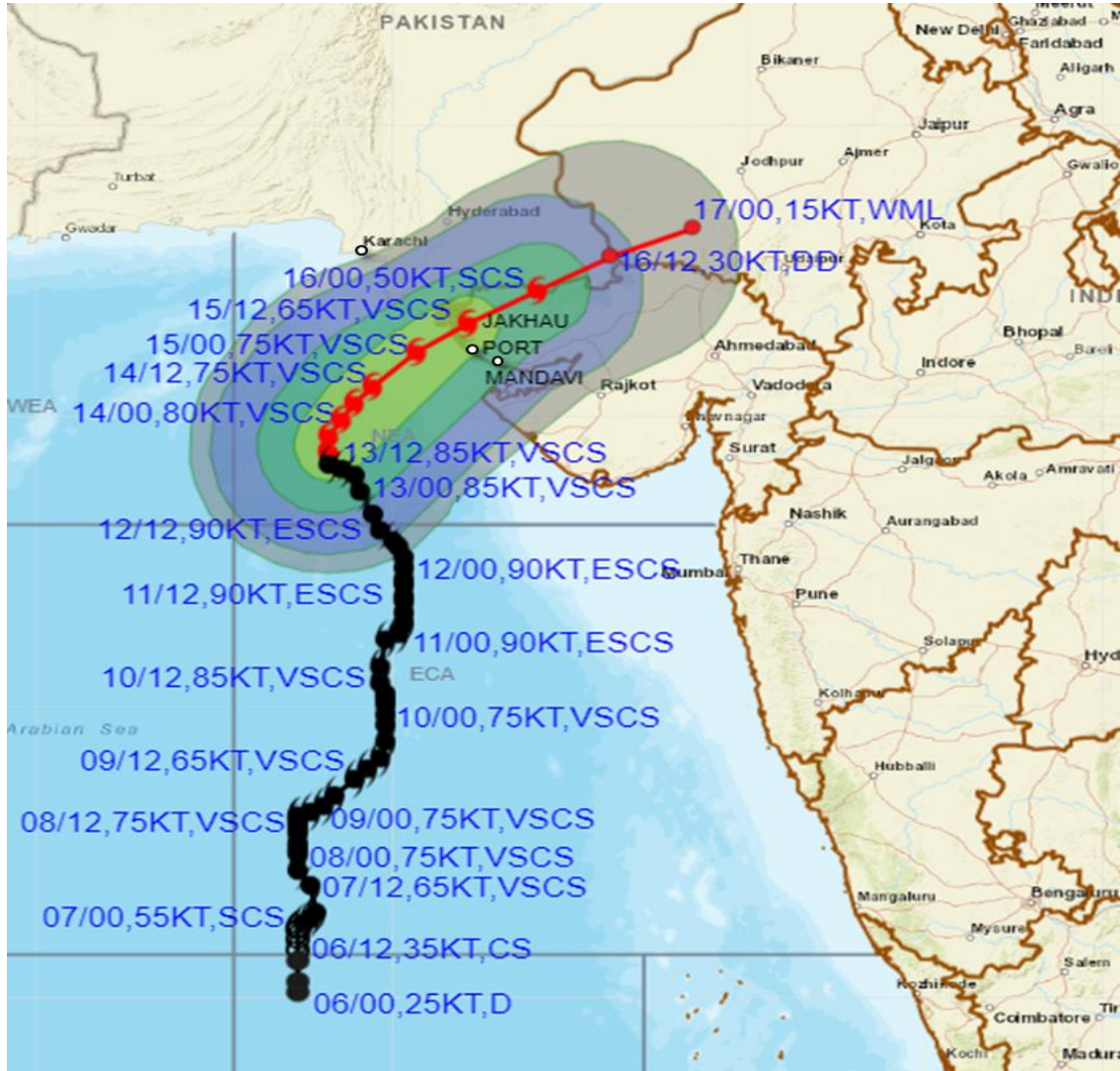
DATE/TIME IN UTC  
 IST=UTC + 0530  
 L: LOW PRESSURE AREA  
 WML: WELL MARKED LOW PRESSURE AREA  
 D: DEPRESSION (17-27 KT)  
 DD: DEEP DEPRESSION (28-33 KT)  
 CS: CYCLONIC STORM (34-47 KT)  
 SCS: SEVERE CYCLONIC STORM (48-63KT)  
 VSCS: VERY SEVERE CYCLONIC STORM (64-89 KT)  
 ESCS: EXTREMELY SEVERE CYCLONIC STORM (90-119 KT)  
 SuCS: SUPER CYCLONIC STORM ( $\geq$  120 KT)

- LESS THAN 34 KT
- 34-47 KT
- $\geq$  48 KT
- OBSERVED TRACK
- FORECAST TRACK
- CONE OF UNCERTAINTY

Forecast	DISTANCE(KM) AND DIRECTION FROM STATIONS				
Date and Time	PORBANDAR	DWARKA	JAKHAU PORT	NALIYA	KARACHI AIRPORT
14.06.23/1200	270, WNW	190, W	160, WSW	180, WSW	260, S
15.06.23/1200	240, NNW	150, NNW	50, NNE	50, NNW	220, SE
16.06.23/1200	380, NNE	330, NE	300, NE	280, NE	390, E



**OBSERVED AND FORECAST TRACK ALONGWITH QUADRANT WIND DISTRIBUTION OF VERY SEVERE CYCLONIC STORM "BIPARJOY" OVER NORTHEAST ARABIAN SEA BASED ON 1200 UTC (1730 IST) OF 13<sup>TH</sup> JUNE 2023.**



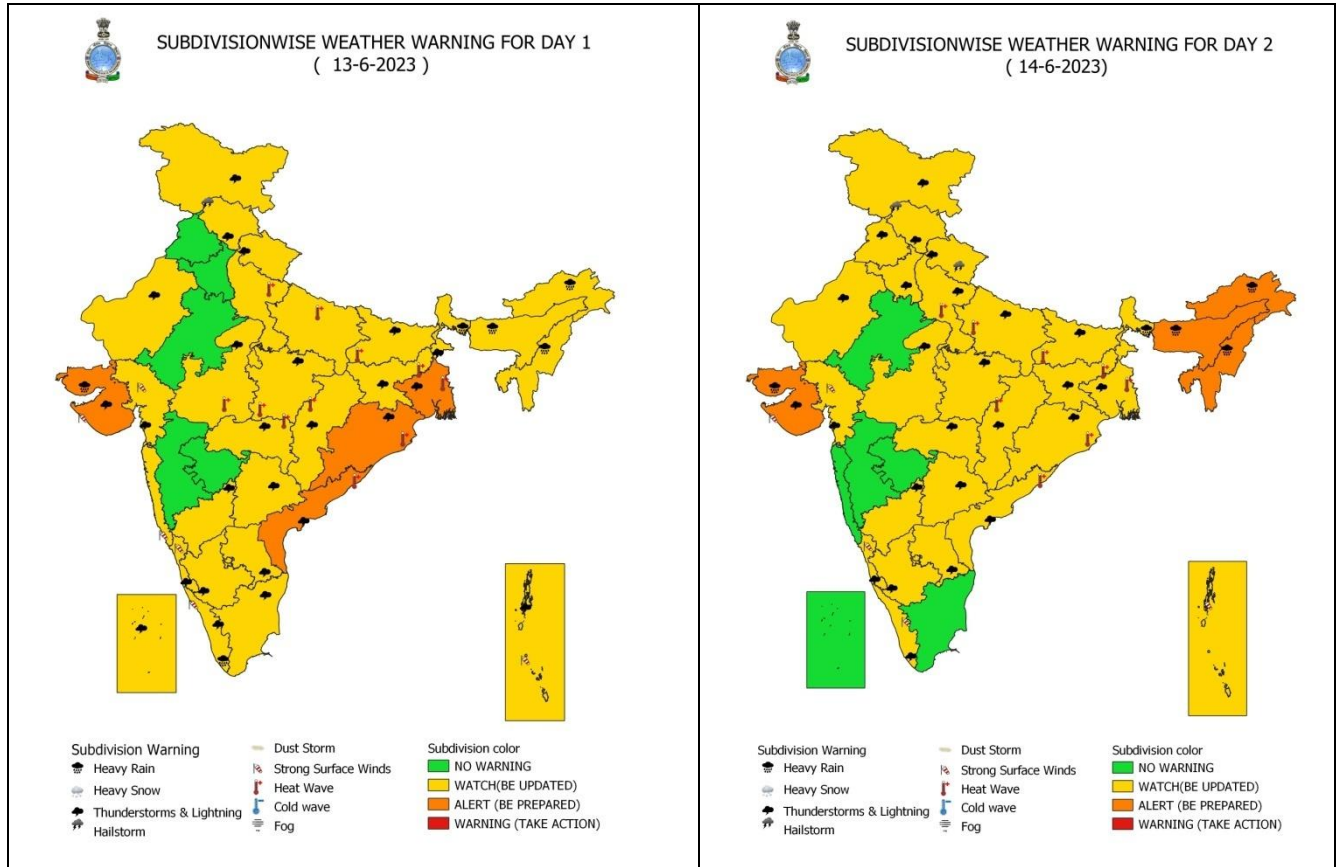
DATE/TIME IN UTC  
 IST=UTC + 0530  
 L: LOW PRESSURE AREA  
 WML: WELL MARKED LOW PRESSURE AREA  
 D: DEPRESSION (17-27 KT)  
 DD: DEEP DEPRESSION (28-33 KT)  
 CS: CYCLONIC STORM (34-47 KT)  
 SCS: SEVERE CYCLONIC STORM (48-63KT)  
 VSCS: VERY SEVERE CYCLONIC STORM (64-89 KT)  
 ESCS: EXTREMELY SEVERE CYCLONIC STORM (90-119 KT)  
 SuCS: SUPER CYCLONIC STORM (≥ 120 KT)

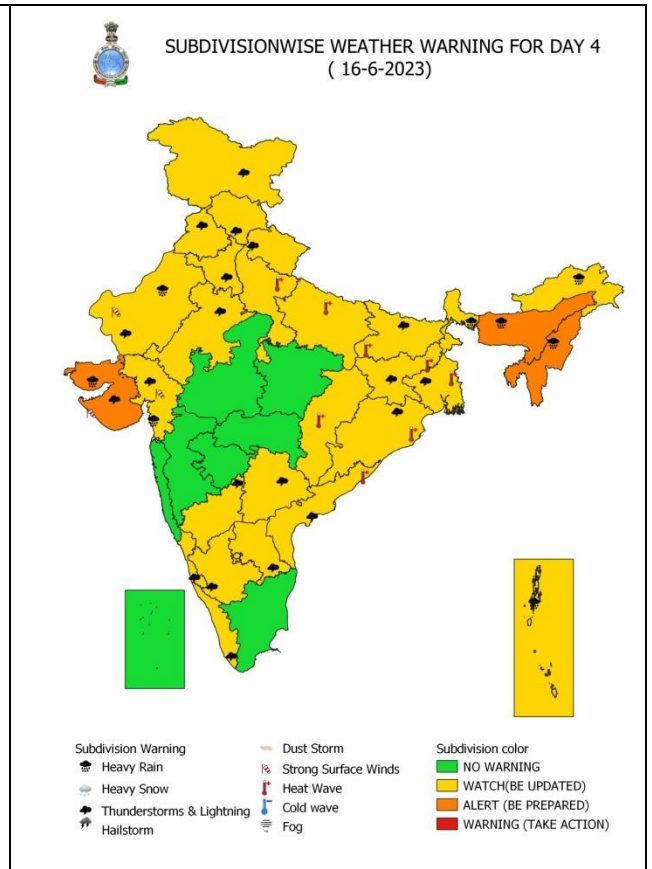
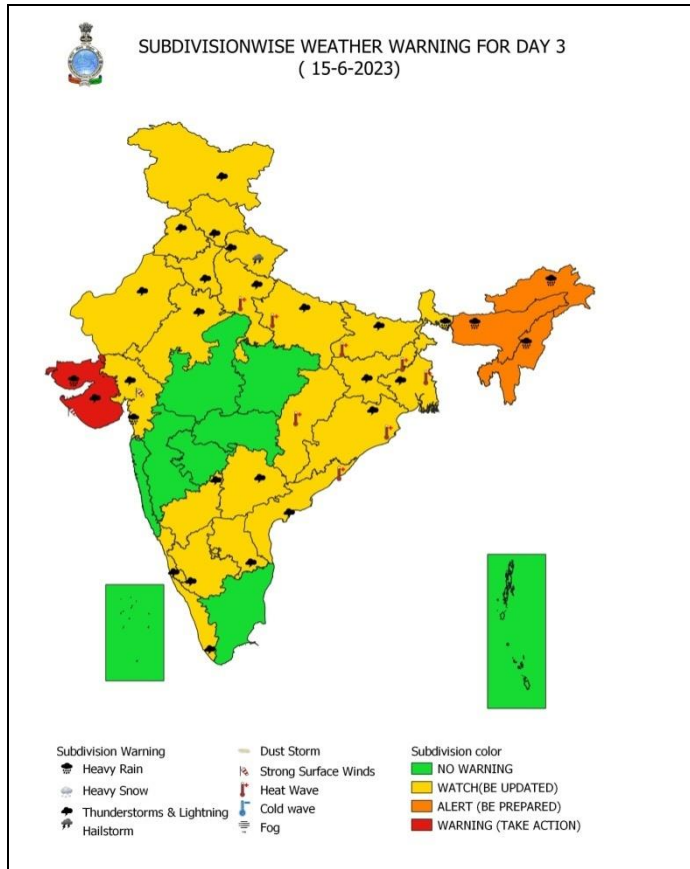
● LESS THAN 34 KT  
 ○ 34-47 KT  
 ● ≥ 48 KT  
 — OBSERVED TRACK  
 — FORECAST TRACK  
 ● CONE OF UNCERTAINTY  
 AREA OF MAXIMUM SUSTAINED WIND SPEED:  
 ■ 28-33 KT (52-61 KMPH)  
 ■ 34-49 KT (62-91 KMPH)  
 ■ 50-63 KT (92-117 KMPH)  
 ■ ≥ 64 KT (≥118 KMPH)

**IMPACT OVER THE SEA**

MSW (knot/kmph)	Impact	Action
28-33 (52-61)	Very rough seas	Total suspension of fishing operations
34-49 (62-91)	High to very high seas	Total suspension of fishing operations
50-63 (92-117)	Very high seas	Total suspension of fishing operations
≥ 64 (≥118)	Phenomenal	Total suspension of fishing operations

# All India Heavy Rainfall Warning for 14<sup>th</sup> to 16<sup>th</sup> June 2023



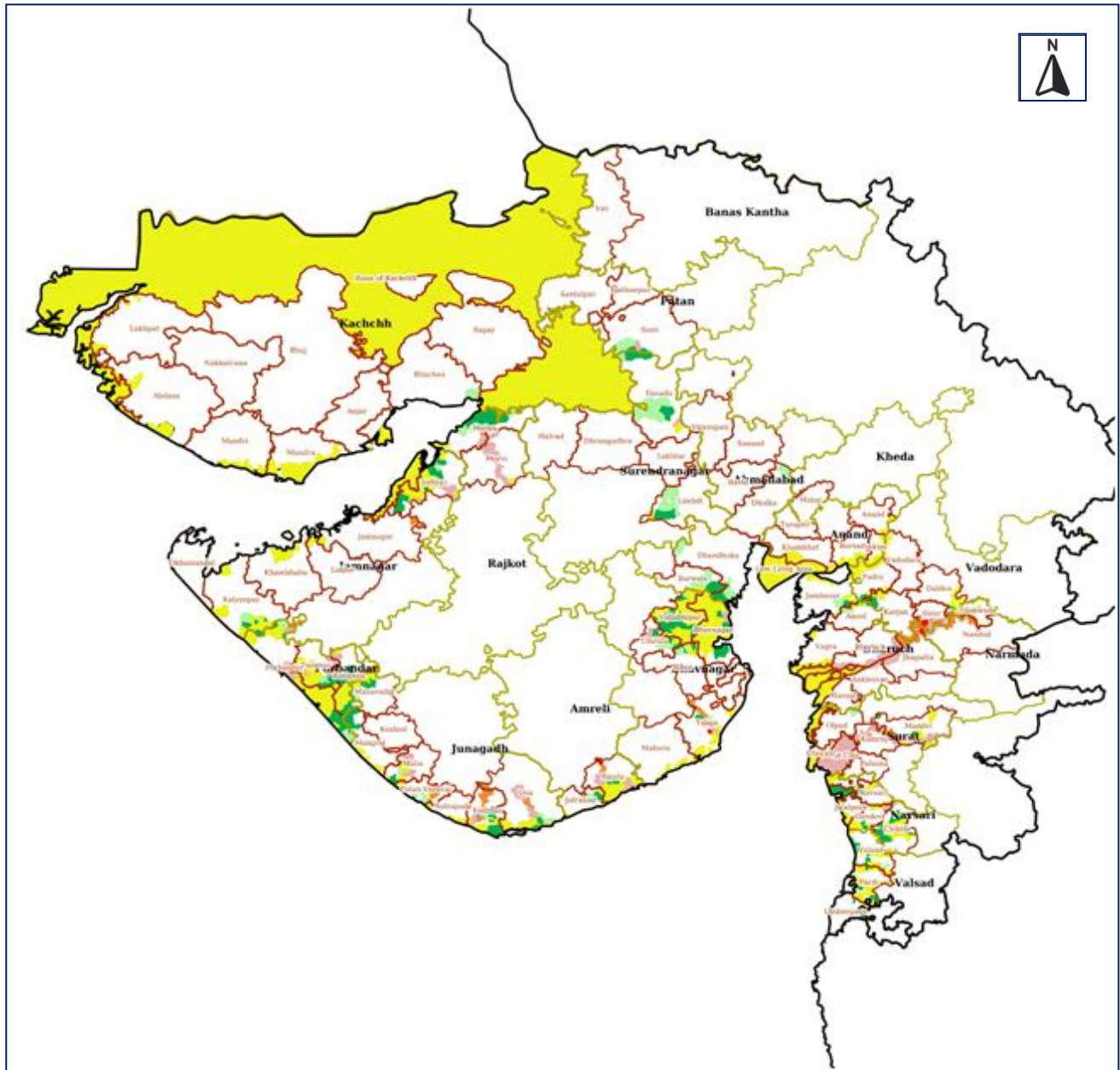


## District-wise Heavy Rainfall Warning Maps for 14<sup>th</sup> to 16<sup>th</sup> June





# Cyclone Biparjoy Flood Hazard Map (Tehsil-wise) on 15<sup>th</sup> June – Flood Depth



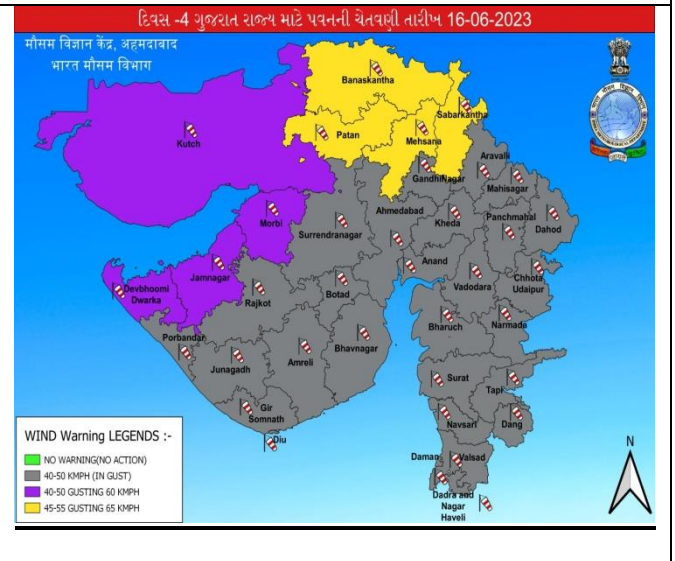
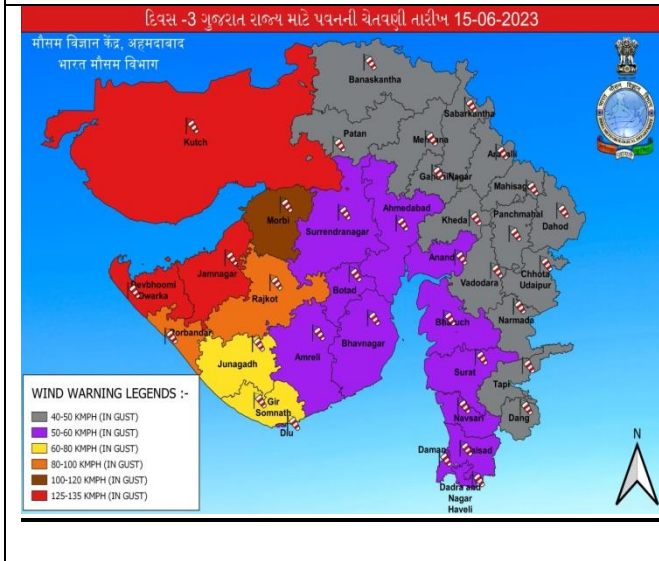
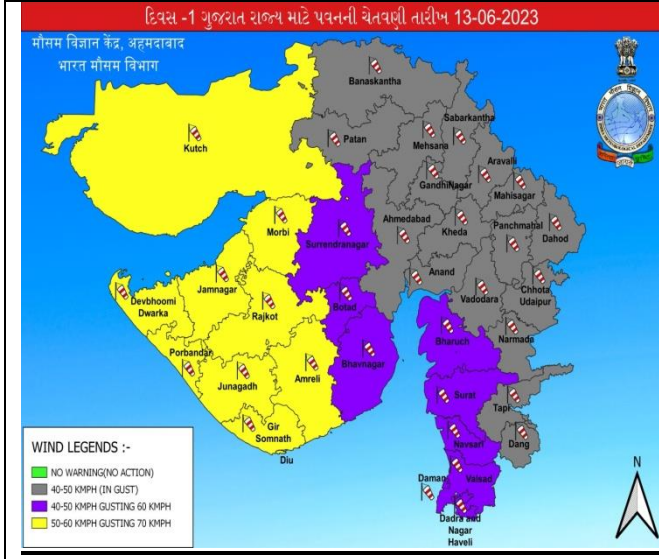
L  
E  
G  
E  
N  
D

State Boundary    
  District Boundary    
  Tehsil Boundary    
  Village Boundary

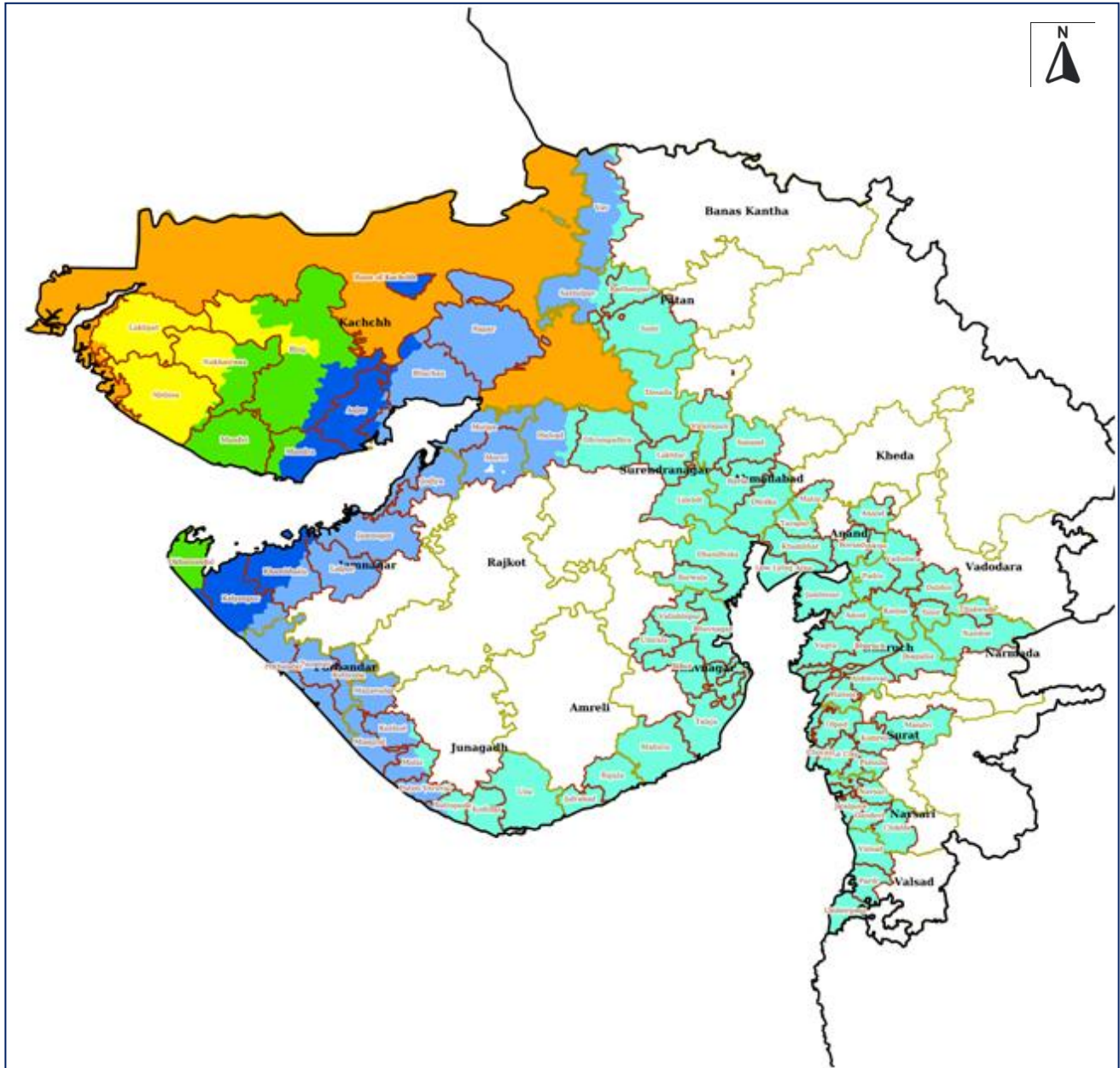
Very Low (Less than 0.25 m)    
  Low (0.25 to 0.50 m)    
  Moderate (0.50 to 1.0 m)

High (1.0 to 2.0 m)    
  Very High (2.0 to 3.0 m)    
  Extreme (Greater than 3.0 m)

# District-wise Wind Warning Maps for 14<sup>th</sup> to 16<sup>th</sup> June

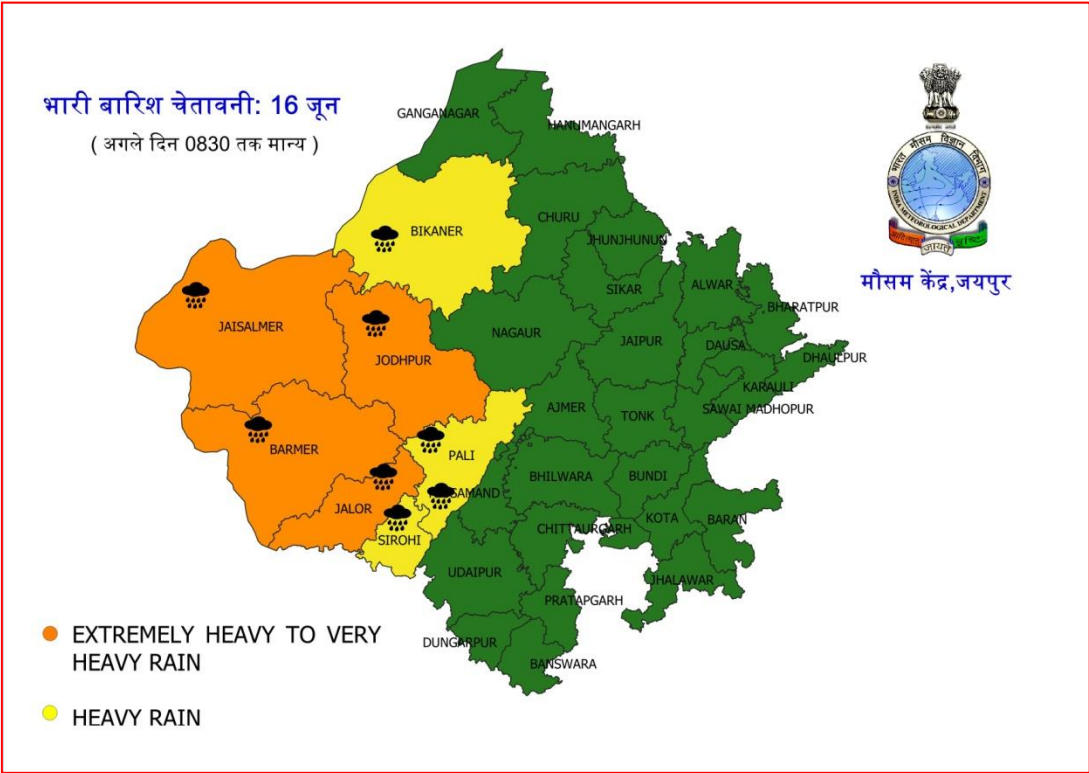


# Cyclone Biparjoy Wind Hazard Map (Tehsil-wise) on 15<sup>th</sup> June - Wind Speeds

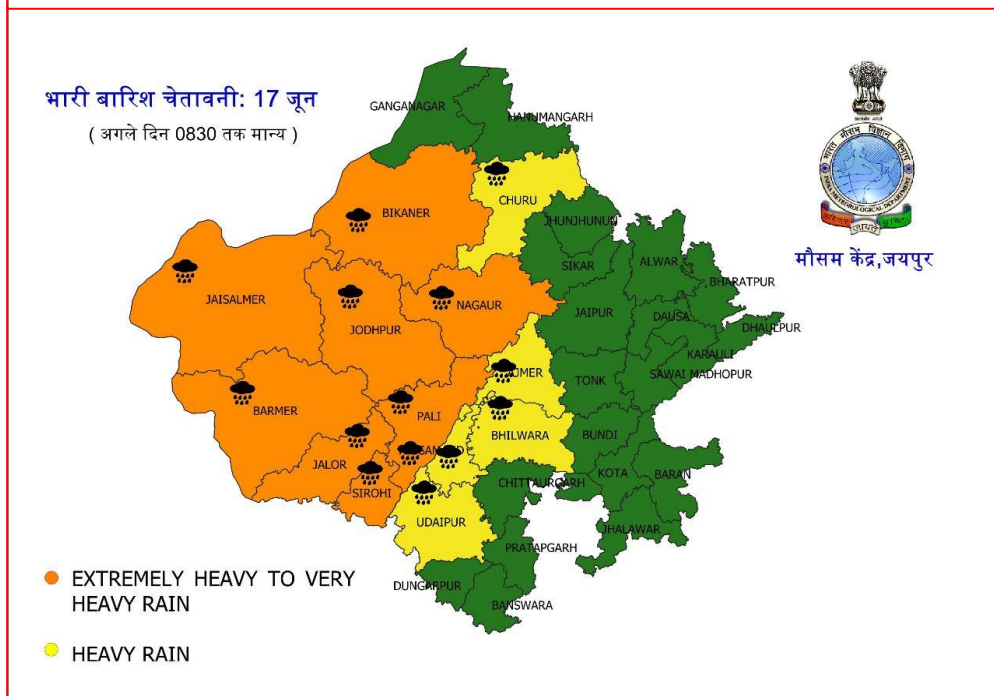
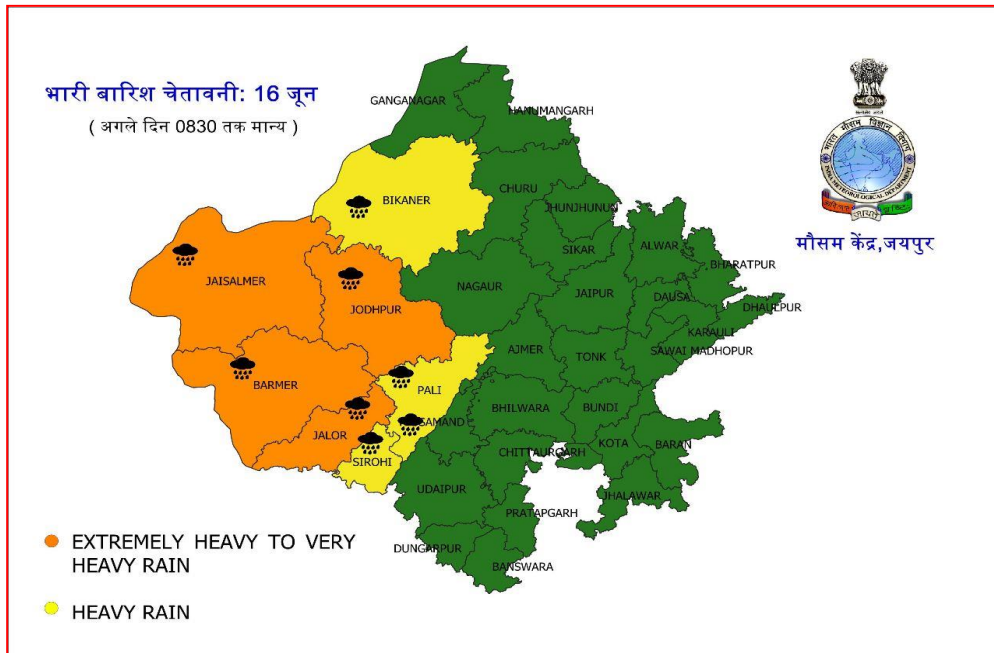


<b>LEGEND</b>	State Boundary	District Boundary	Tehsil Boundary	Village Boundary
	Wind Speed (Less than 31 Km/h)	Wind Speed (31 - 49 Km/h)	Wind Speed (49 - 61 Km/h)	
	Wind Speed (61 - 88 Km/h)	Wind Speed (88 - 117 Km/h)	Wind Speed (117- 166 Km/h)	
	Wind Speed (166 - 221 Km/h)	Wind Speed (Greater than 221 Km/h)		

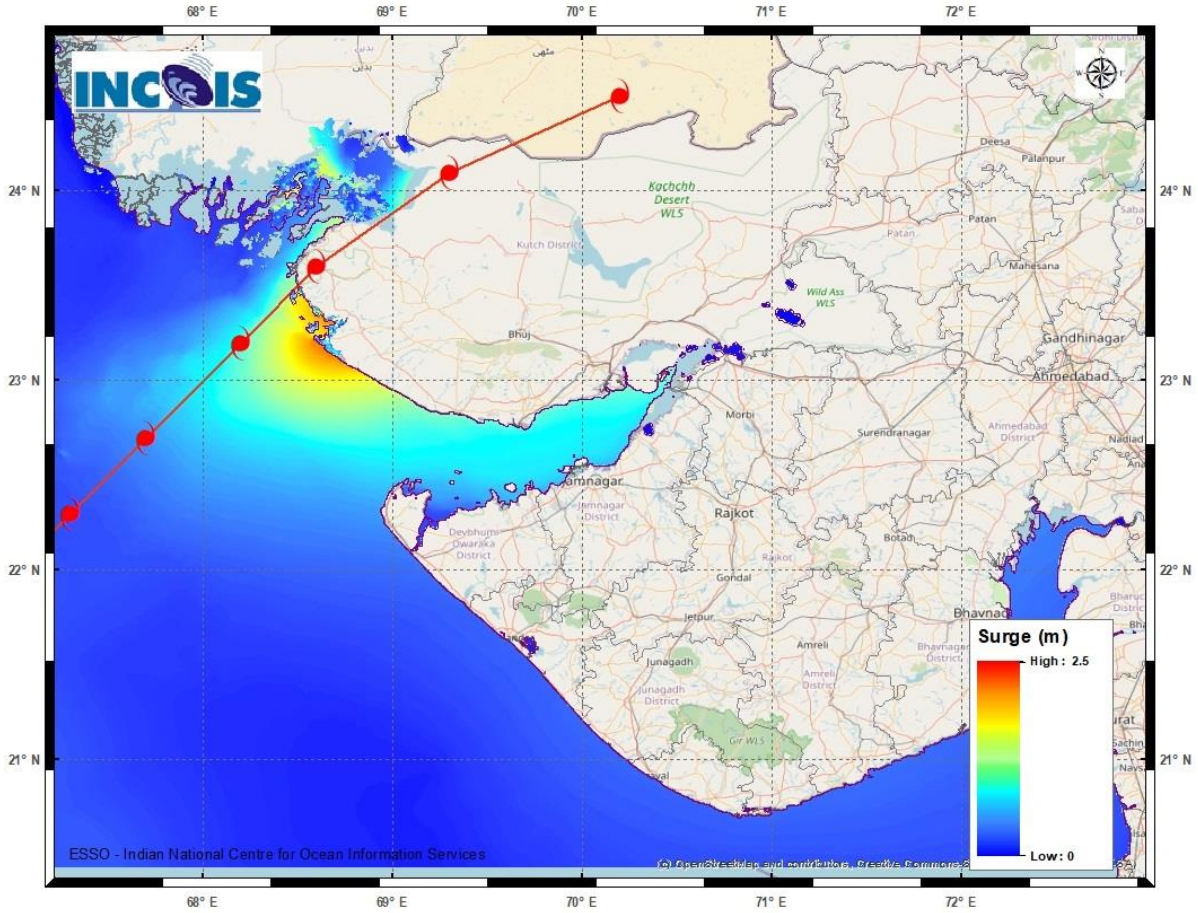
# District-wise Heavy Rainfall Warning Maps for 16<sup>th</sup> June for Rajasthan



# District-wise Wind Warning Maps on 16<sup>th</sup> and 17<sup>th</sup> June for Rajasthan



## Storm Surge Warning Map based on Forecast Track



<b>Astronomical Tide on 15<sup>th</sup> June 2023</b>		
Station	Time (IST)	Height (m)
Porbandar	09:37	2.61
Navlakhi	13:38	7.54
OKHA	11:36	3.74
DEENDAYAL PORT (KANDLA)	13:02	6.79

## Fishermen warning graphics



	Squally Weather with wind speed 40-45 kmph gusting to 55 kmph
	Squally wind speed with wind speed 45-55 kmph gusting to 65 kmph
	Squally wind speed with wind speed 50-60 kmph gusting to 70 kmph
	Gale wind speed with wind speed 60-70 kmph gusting to 80 kmph
	Gale wind speed with wind speed 70-80 kmph gusting to 90 kmph
	Gale wind speed with wind speed 80-90 kmph gusting to 100 kmph
	Gale wind speed with wind speed 90-100 kmph gusting to 120 kmph
	Gale wind speed with wind speed 100-120 kmph gusting to 135 kmph
	Gale wind speed with wind speed 120-140 kmph gusting to 155 kmph
	Gale wind speed with wind speed 140-160 kmph gusting to 175 kmph
	Gale wind speed with wind speed 160-180 kmph gusting to 200 kmph

**Fishermen are advised not to venture into the marked areas**