



India Meteorological Department  
(Ministry of Earth Sciences)

NATIONAL BULLETIN NO. 10 (BoB/02/2026)

TIME OF ISSUE: 0910 HOURS IST

DATED: 07.07.2026

FROM: INDIA METEOROLOGICAL DEPARTMENT (FAX NO. 24643965/24699216/24623220)

TO: CONTROL ROOM, NDM, MINISTRY OF HOME AFFAIRS (FAX.NO. 23093750)

CONTROL ROOM NDMA (FAX.NO. 26701729)

CABINET SECRETARIAT (FAX.NO.23012284, 23018638)

PS TO HON'BLE MINISTER FOR S & T AND EARTH SCIENCES (FAX NO.23316745)

SECRETARY, MOES (FAX NO. 24629777)

H.Q. (INTEGRATED DEFENCE STAFF AND CDS) (FAX NO. 23005137/23005147)

DIRECTOR GENERAL, DOORDARSHAN (23385843)

DIRECTOR GENERAL, AIR (23421105, 23421219)

PIB MOES (FAX NO. 23389042)

UNI (FAX NO. 23355841)

D.G. NATIONAL DISASTER RESPONSE FORCE (NDRF) (FAX NO. 26105912, 2436 3260)

DIRECTOR, PUNCTUALITY, INDIAN RAILWAYS (FAX NO. 23388503)

CHIEF SECRETARY, GOVT. OF ODISHA (FAX NO. 0674-2536660)

CHIEF SECRETARY, GOVT. OF WEST BENGAL (FAX NO. 033-22144328)

CHIEF SECRETARY, GOVT. OF JHARKHAND (FAX NO. 0651-2400255)

CHIEF SECRETARY, GOVT. OF CHHATTISGARH (FAX NO. 0771-2221206)

CHIEF SECRETARY, GOVT. OF BIHAR (FAX NO. 0612-2217085)

CHIEF SECRETARY, GOVT. OF MADHYA PRADESH (FAX NO. 0755-2551521)

CHIEF SECRETARY, GOVT. OF UTTAR PRADESH (FAX NO. 0522-2289212)

CHIEF SECRETARY, GOVT. OF MAHARASHTRA (FAX NO. 022-22028594)

CHIEF SECRETARY, GOVT. OF GUJARAT (FAX NO. 079-232 50305)

CHIEF SECRETARY, GOVT. OF RAJASTHAN (FAX NO. 0141-2227114)

**Subject: Depression over north Chhattisgarh and adjoining areas of southeast Uttar Pradesh and northeast Madhya Pradesh weakened into a Well Marked Low Pressure area over east Madhya Pradesh and neighbourhood**

The depression over north Chhattisgarh and adjoining areas of southeast Uttar Pradesh and northeast Madhya Pradesh weakened into a Well Marked Low Pressure area over east Madhya Pradesh and neighbourhood at 0530 hrs IST of today, the 7th July 2026.

It is very likely to move slowly west-northwestwards across Madhya Pradesh and adjoining areas of southwest Uttar Pradesh and weaken further during next 24 hours.

**Warnings:**

**(i) Rainfall Warning:**

**East Madhya Pradesh:** Light to moderate rainfall at most places with heavy to very heavy rainfall at isolated places during 7<sup>th</sup> July; heavy rainfall at isolated places during 8<sup>th</sup> to 10<sup>th</sup> July.

**West Madhya Pradesh:** Light to moderate rainfall at most places with heavy to very heavy rainfall at a few places with extremely heavy rainfall at isolated places during 7<sup>th</sup> July; heavy rainfall at isolated places during 8<sup>th</sup> to 10<sup>th</sup> July.

**Konkan and Goa:** Light to moderate rainfall at most places with heavy to very heavy rainfall at a few places and extremely heavy rainfall at isolated places on 7<sup>th</sup> July, heavy to very heavy rainfall at isolated places on 8<sup>th</sup> July and heavy rainfall at isolated places on 9<sup>th</sup> July.

**Madhya Maharashtra:** Light to moderate rainfall at most places with heavy to very heavy rainfall at a few places and extremely heavy rainfall at isolated places during 7<sup>th</sup> – 8<sup>th</sup> July; heavy to very heavy rainfall at isolated places on 9<sup>th</sup> July and heavy rainfall at isolated places on 10<sup>th</sup> July.

**Vidarbha:** Light to moderate rainfall at most places with heavy rainfall at isolated places on 7<sup>th</sup> July and heavy to very heavy rainfall at isolated places on 8<sup>th</sup> July.

**East Rajasthan:** Light to moderate rainfall at most places with heavy to very rainfall at isolated places during 7<sup>th</sup> to 9<sup>th</sup> July and heavy rainfall at isolated places on 10<sup>th</sup> July.

**West Rajasthan:** Light to moderate rainfall at most places with heavy rainfall at isolated places on 7<sup>th</sup> & 8<sup>th</sup> July.

**Gujarat region:** Light to moderate rainfall at most places with heavy to very heavy rainfall at a few places and extremely heavy rainfall at isolated places on 7<sup>th</sup> July; heavy to very heavy rainfall at isolated places on 8<sup>th</sup> July and heavy rainfall at isolated places on 9<sup>th</sup> July.

**Saurashtra & Kutch:** Light to moderate rainfall at most places with heavy to very heavy rainfall at a few places and extremely heavy rainfall at isolated places on 7<sup>th</sup> July; and heavy rainfall at isolated places on 8<sup>th</sup> July.

**East Uttar Pradesh:** Light to moderate rainfall at most places with heavy rainfall at isolated places on 9<sup>th</sup> July and heavy to very heavy rainfall at isolated places on 10<sup>th</sup> July.

**West Uttar Pradesh:** Light to moderate rainfall at most places with heavy rainfall at isolated places during 7<sup>th</sup> -10<sup>th</sup> July.

**Bihar:** Light to moderate rainfall at most places with heavy to very heavy rainfall at isolated places on 7<sup>th</sup> & 8<sup>th</sup> July and heavy rainfall at isolated places on 9<sup>th</sup> July.

**Odisha:** Light to moderate rainfall at most places with heavy rainfall (7-11cm) at isolated places on 7<sup>th</sup> July.

**Jharkhand:** Light to moderate rainfall at most places with isolated heavy rainfall during 7<sup>th</sup> – 8<sup>th</sup> July.

**Chhattisgarh:** Light to moderate rainfall at most places with heavy to very heavy rainfall at isolated places on 7<sup>th</sup> and heavy rainfall at isolated places on 8<sup>th</sup> July.

**Gangetic West Bengal:** Light to moderate rainfall at most places with heavy rainfall at isolated places on 10<sup>th</sup> July.

#### **(v) Impact Expected and Action Suggested due to heavy rainfall**

##### **Impact expected:**

- ❖ Heavy rain may damage plantation, horticulture and standing crops.
- ❖ Partial damage to vulnerable structures due to strong winds and rain.
- ❖ Minor damage to kutcha houses/walls, huts and roads due to heavy rain.
- ❖ Road and rail traffic may be affected due to heavy rain.
- ❖ There could be localised landslides, mudslides, landslips, water logging, inundation and flooding over low lying areas.
- ❖ Occasional reduction in visibility due to heavy rainfall.
- ❖ Helicopter services may get affected.

##### **Action suggested:**

- ❖ People are advised to keep a watch on the weather for worsening conditions and be ready to move to safer places accordingly.

- ❖ Take safe shelters; do not take shelter under trees, as there could be lightning.
- ❖ In case of expected lightning, unplug electrical/ electronic appliances, immediately, get out of water bodies and keep away from all the objects that conduct electricity.
- ❖ Tourism and recreational activities to be regulated.
- ❖ Helicopter services to be regulated.

***This is last update in association with this system. However, regular bulletins and messages will continue from National Weather Forecasting Centre and respective Regional Meteorological Centres and Meteorological Centres in association with the Well Marked Low Pressure Area over east Madhya Pradesh and neighbourhood.***

**(Dr Ananda Kumar Das)  
RSMC, IMD, New Delhi**

*Copy to: ACWC Kolkata/ACWC Chennai/CWC Bhubaneswar/CWC Vishakhapatnam/Regional Meteorological Centre – Nagpur/Mumbai / Meteorological Centre – Raipur/ Ranchi/ Patna/Bhopal/Jaipur/Ahmedabad/Lucknow*

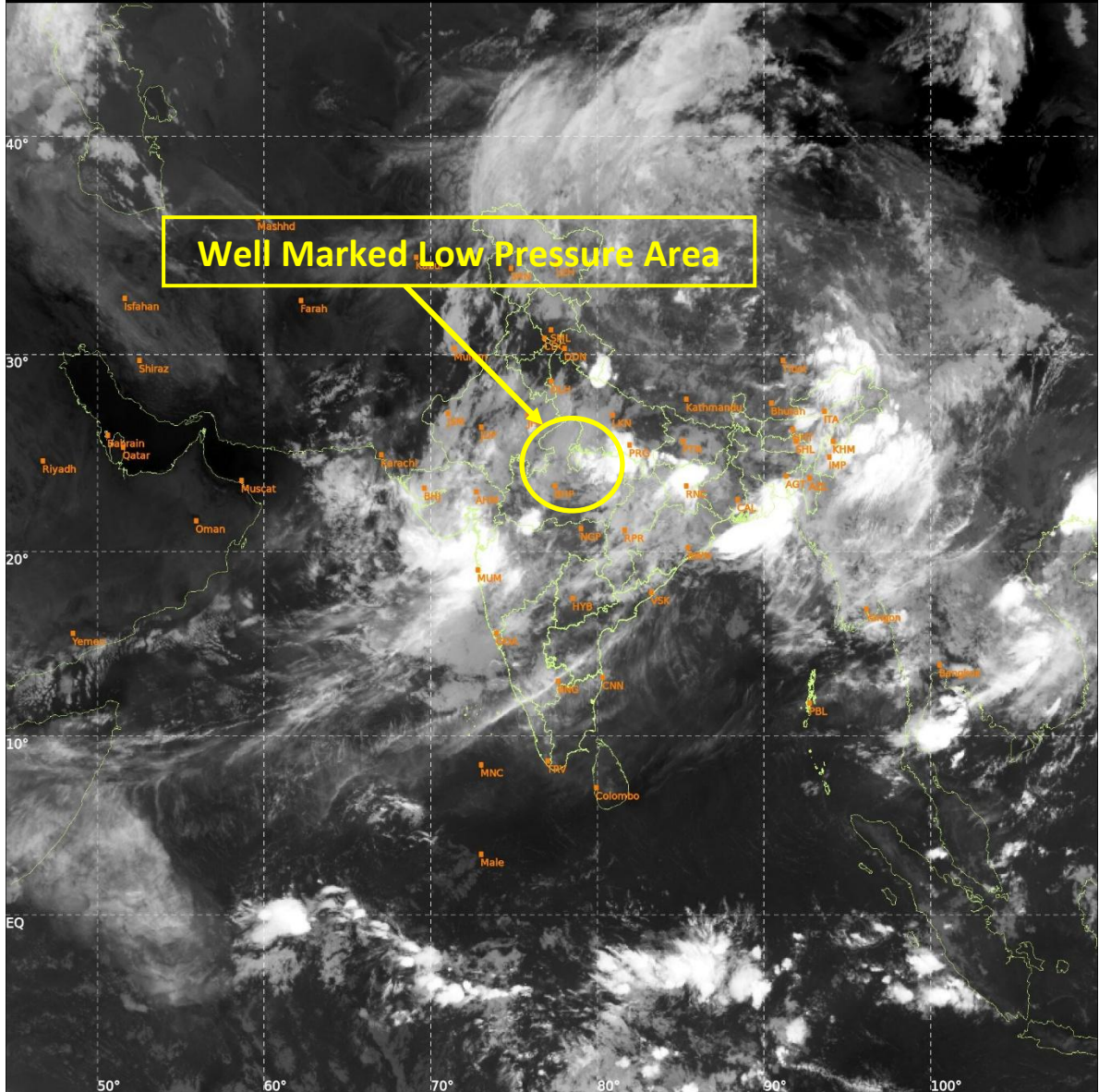


INSAT-3DS IMG, Thermal Infrared1 Count @ 10.78  $\mu\text{m}$   
GMT:07-07-2026/(0130-0157) IST:07-07-2026/(0700-0727)  
L1C MERCATOR (LINEAR STRETCH: 1%)

M O S D A C

453

894





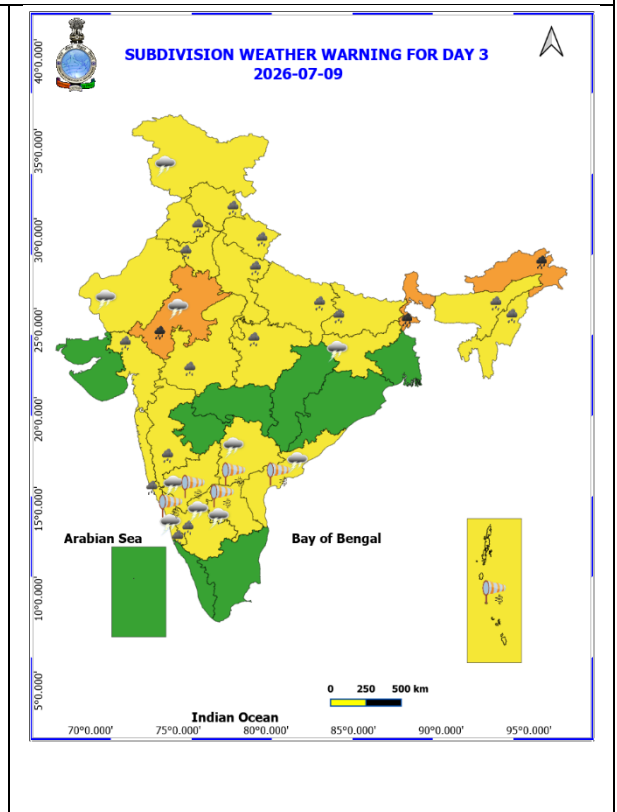
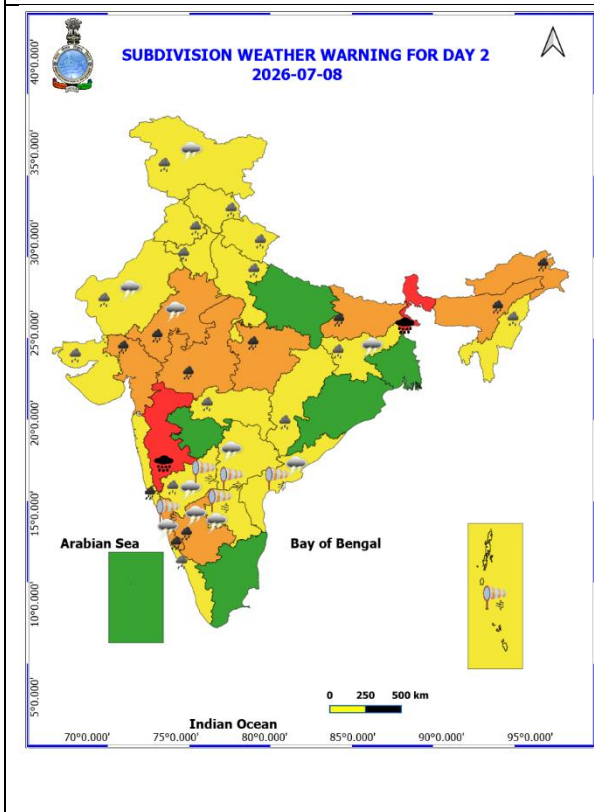
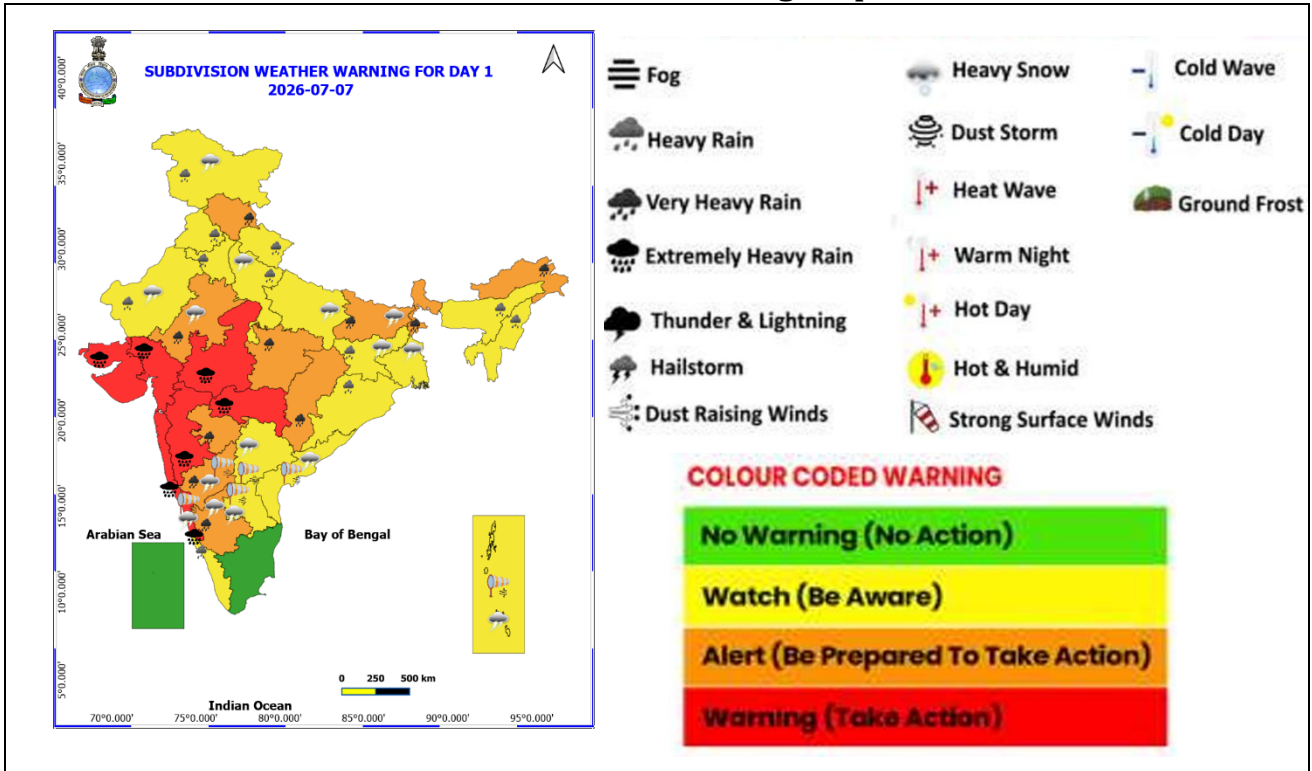
## OBSERVED TRACK OF DEPRESSION OVER NORTHWEST BAY OF BENGAL AND ADJOINING AREA OF NORTH ODISHA-WEST BENGAL COASTS DURING 05 — 07 JULY 2026.

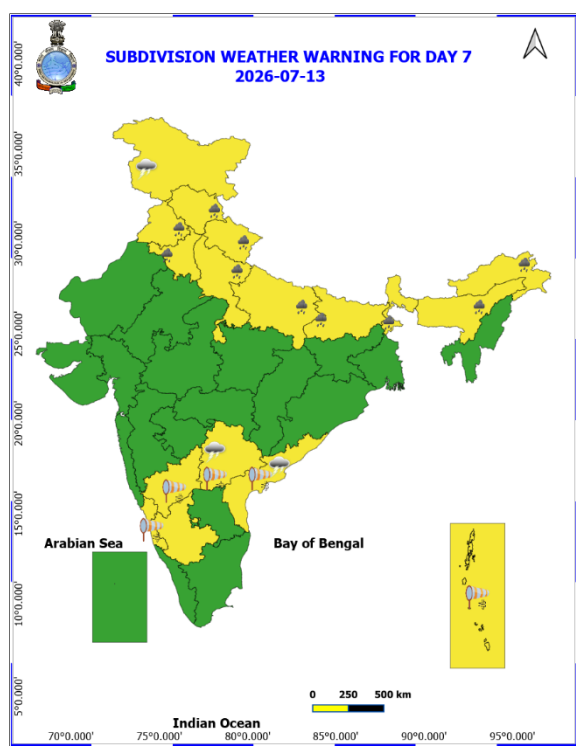
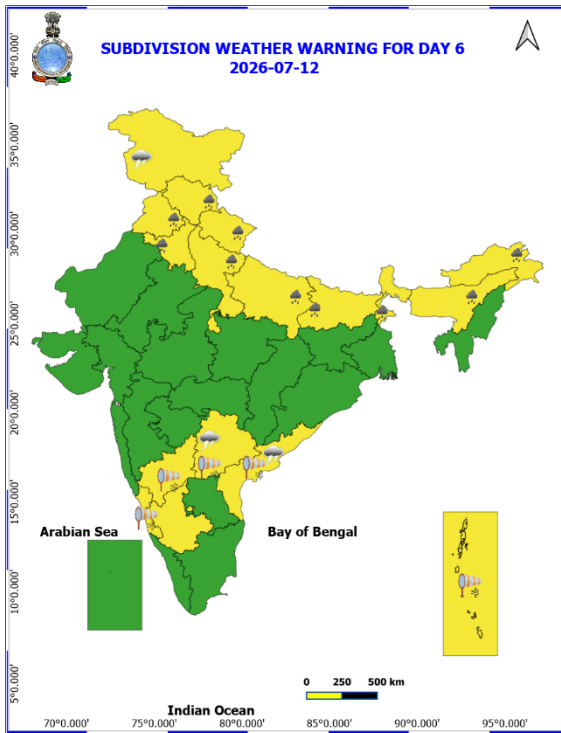
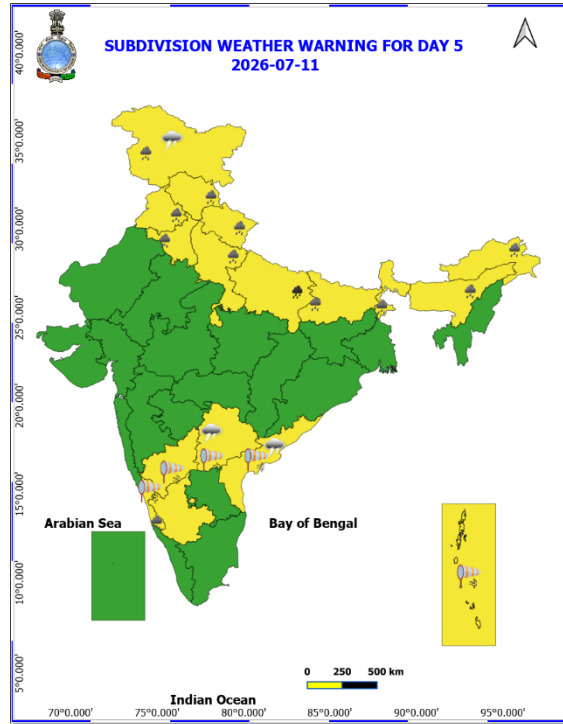
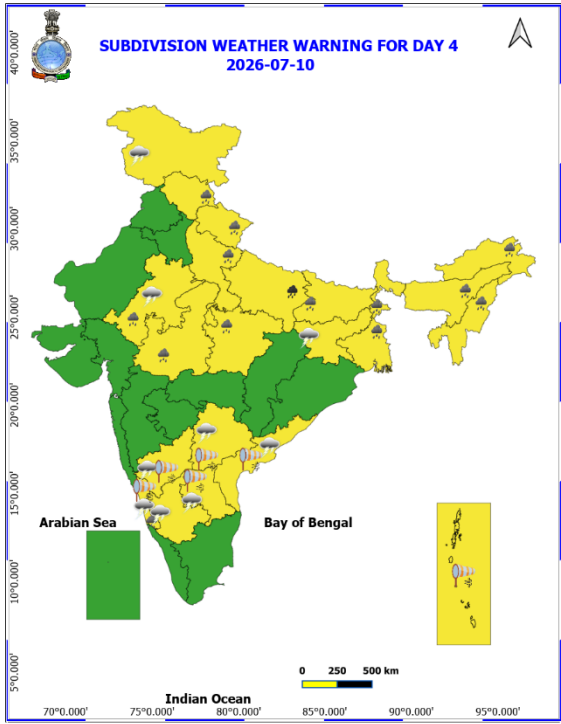


DATE/TIME IN UTC  
 IST=UTC + 0530  
 L: LOW PRESSURE AREA  
 WML: WELL MARKED LOW PRESSURE AREA  
 D: DEPRESSION (17-27 KT)  
 DD: DEEP DEPRESSION (28-33 KT)  
 CS: CYCLONIC STORM (34-47 KT)  
 SCS: SEVERE CYCLONIC STORM (48-63KT)  
 VSCS: VERY SEVERE CYCLONIC STORM (64-89 KT)  
 ESCS: EXTREMELY SEVERE CYCLONIC STORM (90-119 KT)  
 SuCS: SUPER CYCLONIC STORM (≥ 120 KT)

- LESS THAN 34 KT
- 34-47 KT
- ≥ 48 KT
- OBSERVED TRACK
- FORECAST TRACK
- CONE OF UNCERTAINTY

# Weather Warning Graphics



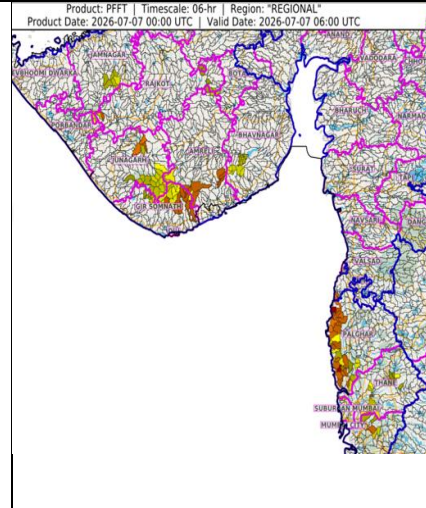


## Flash Flood Guidance

### Persistent Flash Flood Threat (PFFT) till 1130 IST of 07-07-2026:

Low to Moderate flash flood threat likely over few watersheds & neighbourhoods of following Met Sub-divisions during next 6 hours.

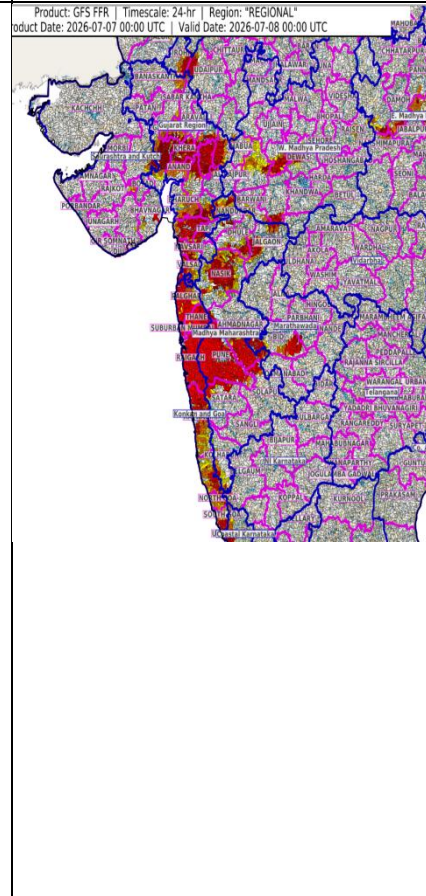
Gujarat Region: Valsad district  
 Konkan & Goa: Palghar, Thane, Raigad and Mumbai Suburban districts  
 Saurashtra & Kutch: Amreli, Bhavnagar, Jamnagar, Junagadh, Gir Somnath and Rajkot districts



### Flash Flood Risk (FFR) till 0530 IST of 08-07-2026:

Moderate flash flood risk likely over few watersheds & neighbourhoods of following Met Sub-divisions during next 24hours.

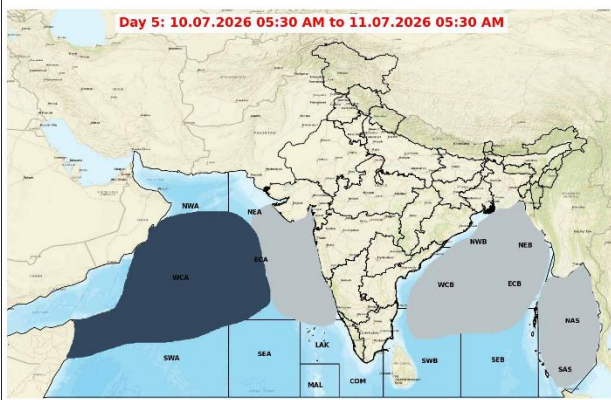
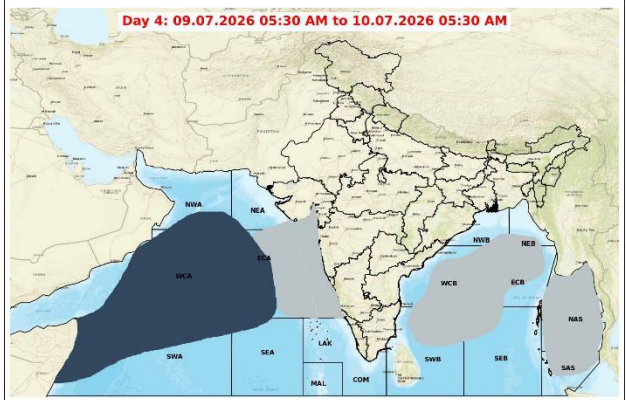
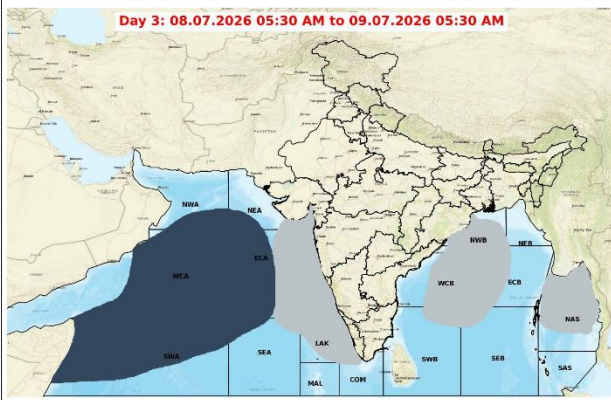
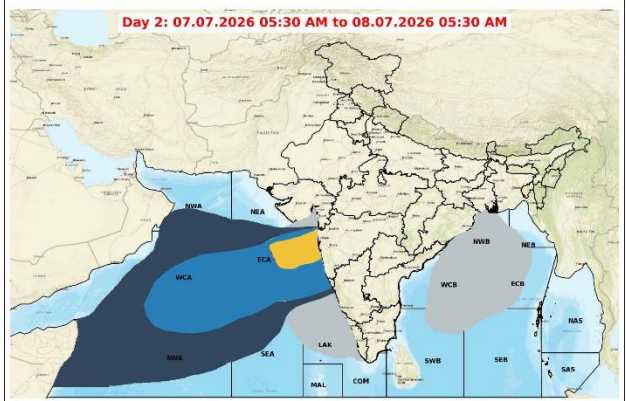
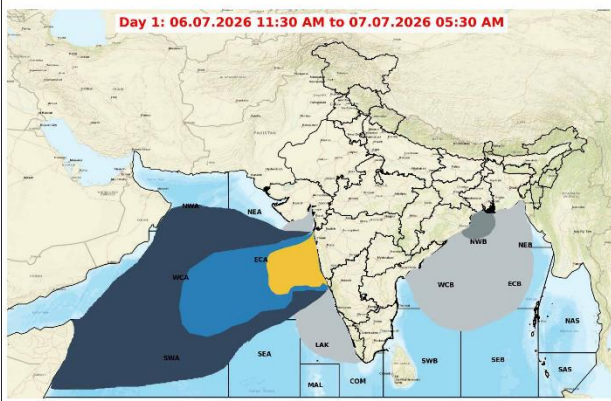
Gujarat Region: Ahmedabad, Anand, Aravalli, Banaskantha, Bharuch, Chhota Udepur, Dahod, Dangs, Gandhinagar, Kheda, Mahisagar, Mehsana, Narmada, Navsari, Panchmahal, Sabarkantha, Surat, Tapi, Vadodara and Valsad districts  
 Saurashtra & Kutch: Botad, Bhavnagar and Amreli districts  
 Konkan & Goa: North Goa, South Goa, Mumbai City, Mumbai Suburban, Palghar, Raigad, Ratnagiri, Sindhudurg and Thane districts  
 Madhya Maharashtra: Pune, Satara, Sholapur, Nashik, Dhule, Jalgaon, Nandurbar, Kolhapur and Ahilyanagar districts  
 East Madhya Pradesh: Sagar, Narsinghpur, Damoh, Jabalpur, Katni, Umaria, Shahdol and Satna districts  
 West Madhya Pradesh: Jhabua, Dhar, Indore, Dewas, Sehore, Raisen and Ratlam districts.



Surface runoff/ Inundation may occur at some fully saturated soils & low-lying areas over Area of Concern (AoC) as shown in map due to expected rainfall occurrence in next 6 (PFFT)/24(FFR) hours.

Flash Flood Threat	Flash Flood Risk
<span style="color: red;">■</span> <b>High Threat (Take Action)</b>	<span style="color: red;">■</span> <b>High Risk (Take Action)</b>
<span style="color: orange;">■</span> <b>Moderate threat (Be Prepared)</b>	<span style="color: orange;">■</span> <b>Moderate Risk (Be Prepared)</b>
<span style="color: yellow;">■</span> <b>Low Threat (Be Updated)</b>	<span style="color: yellow;">■</span> <b>Low Risk (Be Updated)</b>

### Fishermen Warning Graphics



**Legend**

- |   |  |
|---|--|
| Squally Weather with wind speed 35-45 kmph gusting to 55 kmph | Squally wind with speed 55-65 kmph gusting to 75 kmph        |
| Squally Weather with wind speed 40-50 kmph gusting to 60 kmph | <b>Squally wind with speed 60-70 kmph gusting to 80 kmph</b> |
| Squally Weather with wind speed 45-55 kmph gusting to 65 kmph | SCS with Gale wind speed 90-110 kmph gusting to 120 kmph     |
| Squally wind with speed 45-55 kmph gusting to 65 kmph         | VSCS with Gale wind speed 120-165 kmph gusting to 185 kmph   |
| Squally wind with speed 50-60 kmph gusting to 70 kmph         | ESCS with Gale wind speed 165-220 kmph gusting to 245 kmph   |

Fishermen are advised not to venture into the marked areas.