



**India Meteorological Department
(Ministry of Earth Sciences)**

BULLETIN NO. : 21 (BOB/07/2022)

TIME OF ISSUE: 0115 HOURS IST

DATED: 23.08.2022

FROM: INDIA METEOROLOGICAL DEPARTMENT (FAX NO. 24643965/24699216/24623220)

**TO: CONTROL ROOM, NDM, MINISTRY OF HOME AFFAIRS (FAX.NO. 23093750)
CONTROL ROOM NDMA (FAX.NO. 26701729)
CABINET SECRETARIAT (FAX.NO.23012284, 23018638)
PS TO HON'BLE MINISTER FOR S & T AND EARTH SCIENCES (FAX NO.23316745)
SECRETARY, MOES (FAX NO. 24629777)
H.Q. (INTEGRATED DEFENCE STAFF AND CDS) (FAX NO. 23005137/23005147)
DIRECTOR GENERAL, DOORDARSHAN (23385843)
DIRECTOR GENERAL, AIR (23421105, 23421219)
PIB MOES (FAX NO. 23389042)
UNI (FAX NO. 23355841)
D.G. NATIONAL DISASTER RESPONSE FORCE (NDRF) (FAX NO. 26105912, 2436 3260)
DIRECTOR, PUNCTUALITY, INDIAN RAILWAYS (FAX NO. 23388503)
CHIEF SECRETARY, CHATTISGARH (FAX NO. 771-2221206)
CHIEF SECRETARY, GOVT. OF MADHYA PRADESH (FAX NO. 755-2441076)
CHIEF SECRETARY, GOVT. OF MAHARASHTRA (FAX NO. 022- 22028594)
CHIEF SECRETARY, GOVT. OF UTTAR PRADESH (FAX NO. 522- 2239283)
CHIEF SECRETARY, GOVT. OF RAJASTHAN (FAX NO. 0141-2227114)
CHIEF SECRETARY, GOVT. OF GUJARAT (FAX NO. 079-23250305)
CHIEF SECRETARY, GOVT. OF HARYANA (NA)
CHIEF SECRETARY, GOVT. OF DELHI (011-23392102)**

Sub: Depression over East Rajasthan and adjoining Northwest Madhya Pradesh

The depression over Northwest Madhya Pradesh and adjoining East Rajasthan moved nearly westwards during past 06 hours with a speed of 15 kmph and lay centered at 2330 hrs IST of 22nd August, 2022 over East Rajasthan and adjoining Northwest Madhya Pradesh near latitude 24.5°N and longitude 76.5°E, about 80 km west-southwest of Guna (Madhya Pradesh), 60 km north-northwest of Rajgarh (Madhya Pradesh), 100 km southeast of Kota (Rajasthan) and 280 km east of Udaipur (Rajasthan).

It is very likely to continue to move nearly westwards and weaken into a Well Marked Low Pressure Area during next 12 hours.

Forecast track and intensity are given in the following table:

Date/Time(IST)	Position (Lat. °N/ long. °E)	Maximum sustained surface wind speed (Kmph)	Category of cyclonic disturbance
22.08.22/2330	24.5/76.5	30-40 gusting to 50	Depression
23.08.22/0530	24.6/75.7	30-40 gusting to 50	Depression
23.08.22/1130	24.7/74.9	25-35 gusting to 45	Well Marked Low

Warnings:

Rainfall:

23rd August: Rainfall at most places with **heavy to very heavy rainfall** at isolated places very likely over south Rajasthan, North Gujarat & West Madhya Pradesh and **heavy rainfall** at isolated places likely over and South Gujarat.

24th August: Rainfall at most places with heavy rainfall at isolated places very likely over Southwest Rajasthan and adjoining Kutch area.

Wind:

- **Squally wind speed reaching 30-40 gusting to 50 kmph** very likely over East Rajasthan, West Madhya Pradesh and adjoining areas of East Madhya Pradesh & southwest Uttar Pradesh during next 24 hours and **strong winds speed reaching 20-30 kmph gusting to 40 kmph** very likely to prevail over South Haryana, Delhi and West Rajasthan during next 24 hours.

Damage expected over West Madhya Pradesh and East Rajasthan:

- Damage to loose/unsecured structures. Some breaches in Kutcha road & embankments due to flooding.
- Damage to small trees like Banana, Papaya etc. Damage to standing crops and horticulture.
- Localized Flooding of roads, water logging in low lying areas and closure of underpasses.
- Reduction in visibility due to heavy rainfall.
- Disruption of traffic in major cities due to water logging in roads.
- It may lead to riverine flooding in some river catchments (for riverine flooding please visit Web page of CWC)

Next Bulletin will be issued at 0830 hours IST of 23rd August, 2022.

(Shobhit Katiyar)
Scientist C, Cyclone Warning Division, New Delhi

Copy to: ACWC Mumbai/ ACWC Kolkata/ ACWC Chennai/ CWC Bhubaneswar/CWCVisakhapatnam/ / MO Port Blair/MC Raipur/MC Bhopal/MC Hyderabad/RMC Nagpur/RMC New Delhi/MC Jaipur

LEGEND: Heavy Rainfall: 64.5 to 115.5mm, **Very Heavy Rainfall:** 115.6 to 204.4mm **Extremely Heavy Rainfall:** more than 204.5 mm, **Most Places:** more than 76% of total stations, **Many Places:** 50% to 75% of total stations, **Isolated Places:** Less than 25% of total stations



OBSERVED AND FORECAST TRACK ALONGWITH CONE OF UNCERTAINTY OF DEPRESSION OVER EAST RAJASTHAN AND ADJOINING NORTHWEST MADHYA PRADESH BASED ON 1800 UTC OF 22nd AUGUST, 2022

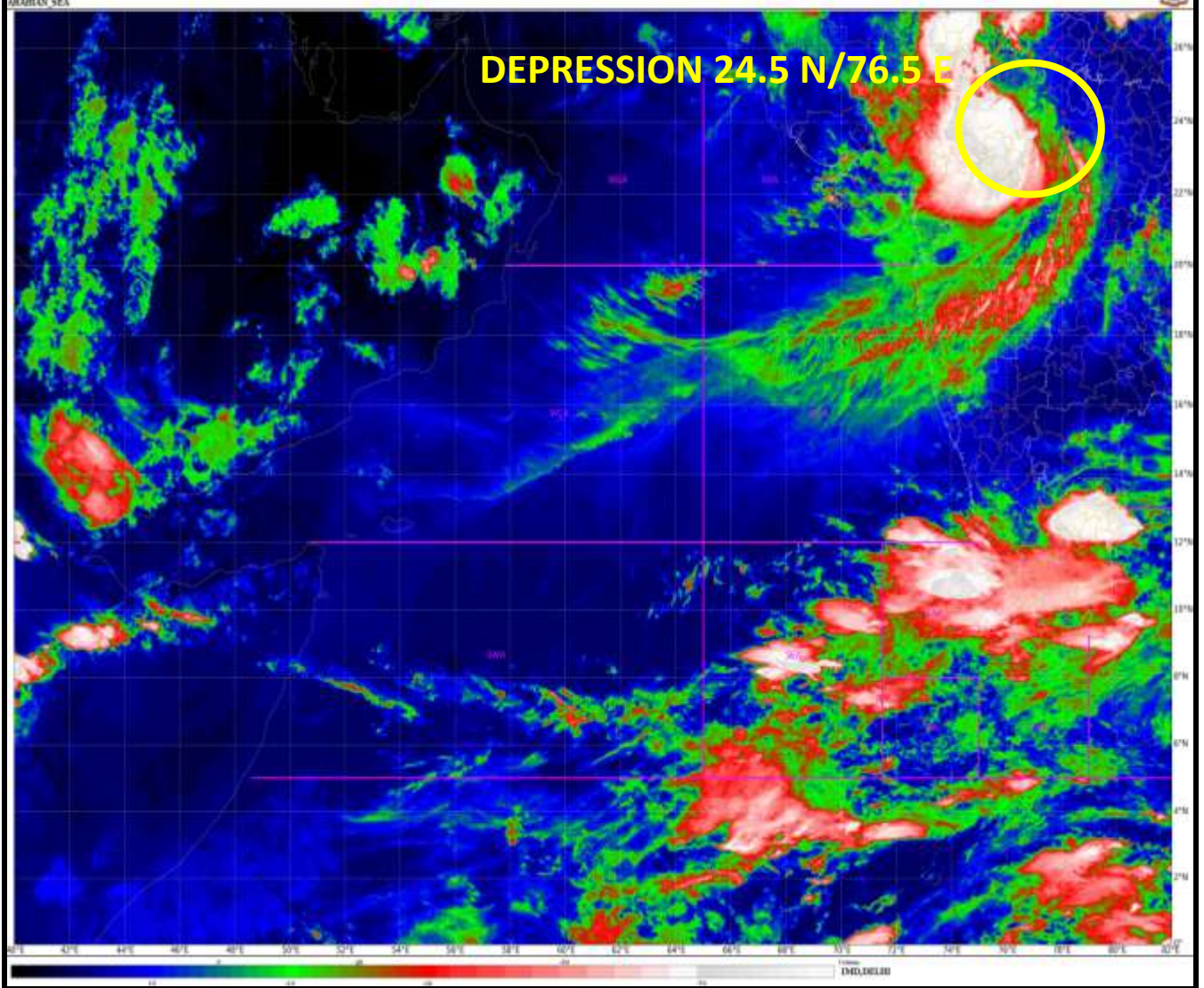
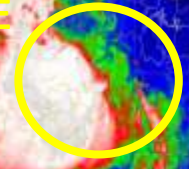


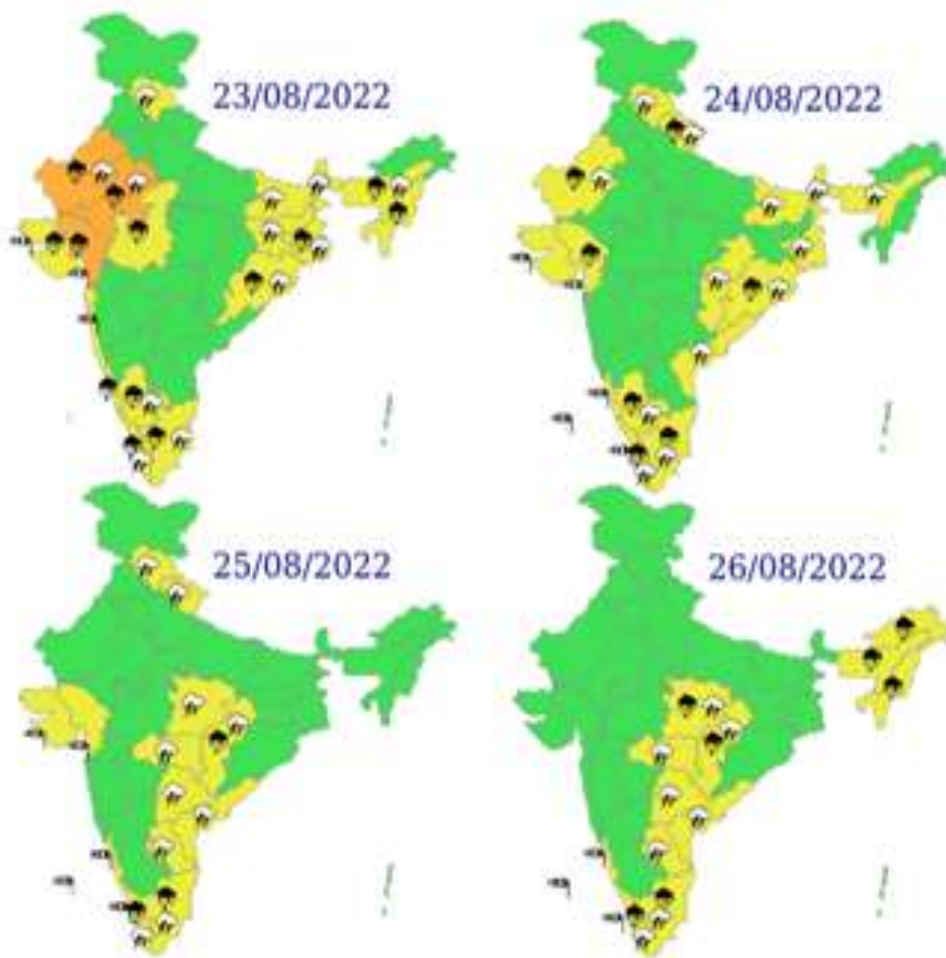
DATE/TIME IN UTC
 IST=UTC + 0530
 L: LOW PRESSURE AREA
 WML: WELL MARKED LOW PRESSURE AREA
 D: DEPRESSION (17-27 KT)
 DD: DEEP DEPRESSION (28-33 KT)
 CS: CYCLONIC STORM (34-47 KT)
 SCS: SEVERE CYCLONIC STORM (48-63KT)
 VSCS: VERY SEVERE CYCLONIC STORM (64-89 KT)
 ESCS: EXTREMELY SEVERE CYCLONIC STORM (90-119 KT)
 SuCS: SUPER CYCLONIC STORM (\geq 120 KT)

- LESS THAN 34 KT
- 34-47 KT
- \geq 48 KT
- OBSERVED TRACK
- FORECAST TRACK
- CONE OF UNCERTAINTY



DEPRESSION 24.5 N/76.5 E





- | | | | |
|--|--|--|--|
|  Heavy Rain |  Heavy Snow |  Thunderstorm |  Dust Storm |
|  Strong Winds |  Visibility |  Cyclone |  Squall/ Hail |
|  Frost |  Cold Wave |  Heat Wave |  Sea State |