



**India Meteorological Department
(Ministry of Earth Sciences)**

BULLETIN NO. 3 (ARB/01/2022)

TIME OF ISSUE: 2000 HOURS IST DATED: 16.07.2022
FROM: INDIA METEOROLOGICAL DEPARTMENT (FAX NO. 24643965/24699216/24623220)

TO: CONTROL ROOM, NDM, MINISTRY OF HOME AFFAIRS (FAX.NO. 23093750)
CONTROL ROOM NDMA (FAX.NO. 26701729)
CABINET SECRETARIAT (FAX.NO.23012284, 23018638)
PS TO HON'BLE MINISTER FOR S & T AND EARTH SCIENCES (FAX NO.23316745)
SECRETARY, MOES (FAX NO. 24629777)
H.Q. (INTEGRATED DEFENCE STAFF AND CDS) (FAX NO. 23005137/23005147)
DIRECTOR GENERAL, DOORDARSHAN (23385843)
DIRECTOR GENERAL, AIR (23421105, 23421219)
PIB MOES (FAX NO. 23389042)
UNI (FAX NO. 23355841)
D.G. NATIONAL DISASTER RESPONSE FORCE (NDRF) (FAX NO. 26105912, 2436 3260)
DIRECTOR, PUNCTUALITY, INDIAN RAILWAYS (FAX NO. 23388503)
CHIEF SECRETARY, GUJARAT (FAX NO. 079-23250305)
CHIEF SECRETARY, DAMAN & DIU (FAX NO. 0260-2230775)
CHIEF SECRETARY, DADRA & NAGAR HAVELI (FAX NO. 0260-2645466)
CHIEF SECRETARY, MAHARASHTRA (FAX NO. 022- 22028594)
CHIEF SECRETARY, GOA (FAX NO. 0832-2415201)
CHIEF SECRETARY, KARNATAKA (FAX NO. 080-22258913)
CHIEF SECRETARY, KERALA (FAX NO. 0471-2327176)
ADMINISTRATOR, LAKSHADWEEP ISLANDS (FAX NO. 0413-262184)
CHIEF SECRETARY, TAMIL (FAX NO. 044-25672304)

Sub: Depression over Northeast Arabian Sea off Saurashtra coast

The depression over Northeast Arabian Sea off Saurashtra coast moved north-northwestwards during last 6 hours with a speed of 5 kmph and lay centered at 1730 hours IST of today, the 16th July, 2022 over the same region near latitude 22.1°N and longitude 68.8°E, about 110 km west-northwest of Porbandar (Gujarat), 50 km southwest of Okha (Gujarat), 130 km south of Naliya (Gujarat) and 350 km south-southeast of Karachi (Pakistan).

It is very likely to move north-northwestwards along & off Saurashtra & Kutch coasts and adjoining northeast Arabian Sea during next 12 hours. Thereafter, it is likely to recurve and move nearly westwards towards Oman coast across northwest Arabian Sea during subsequent 48 hours.

Warnings:

(i) Rainfall (warning graphics enclosed)

Rainfall at most places with heavy rainfall at isolated places over Gujarat region and Saurashtra & Kutch on 16th July. Thereafter, there will be no adverse impact of this system on rainfall over the state.

(ii) Wind warning

16th July: Squally weather with wind speed reaching 45-55 kmph gusting to 65 kmph very likely over northeast Arabian Sea, adjoining central Arabian Sea, along & off Gujarat coast and 40-50 kmph gusting to 60 kmph along & off Maharashtra & Karnataka coasts. Strong winds with speed

reaching 45-55 kmph gusting to 65 kmph very likely over remaining parts of central and adjoining south Arabian Sea under the influence of strong monsoon condition over the region.

17th July: Squally weather with wind speed reaching 45-55 kmph gusting to 65 kmph very likely over northeast and adjoining northwest Arabian Sea. Strong winds with speed reaching 45-55 kmph gusting to 65 kmph very likely over westcentral and adjoining southwest Arabian Sea. Strong winds with speed reaching 40-50 kmph gusting to 60 kmph very likely over eastcentral and adjoining south Arabian Sea.

18th July: Squally weather with wind speed reaching 40-50 kmph gusting to 70 kmph very likely over northwest Arabian Sea. Strong winds with speed reaching 45-55 kmph gusting to 65 kmph very likely over westcentral Arabian Sea.

(iii) Sea condition

16th July: Sea condition is very likely to become rough to very rough over northeast Arabian Sea and over central & adjoining south Arabian Sea and along & off Gujarat coast, Maharashtra & Karnataka coasts.

17th July: Sea condition is very likely to become rough to very rough over northeast and adjoining northwest Arabian Sea and over central & adjoining south Arabian Sea.

18th July: Sea condition is very likely to become rough to very rough over northwest Arabian Sea and over westcentral Arabian Sea.

(iv) Fishermen Warning

16th July: Fishermen are advised not to venture into northeast Arabian Sea, central & adjoining south Arabian Sea and along & off Gujarat coast, Maharashtra & Karnataka coasts.

17th July: Fishermen are advised not to venture into northeast Arabian Sea and central & adjoining south Arabian Sea.

18th July: Fishermen are advised not to venture into northwest Arabian Sea and westcentral Arabian Sea.

The system is under continuous surveillance and the next message will be issued at 0230 hours IST of 17th July, 2022.

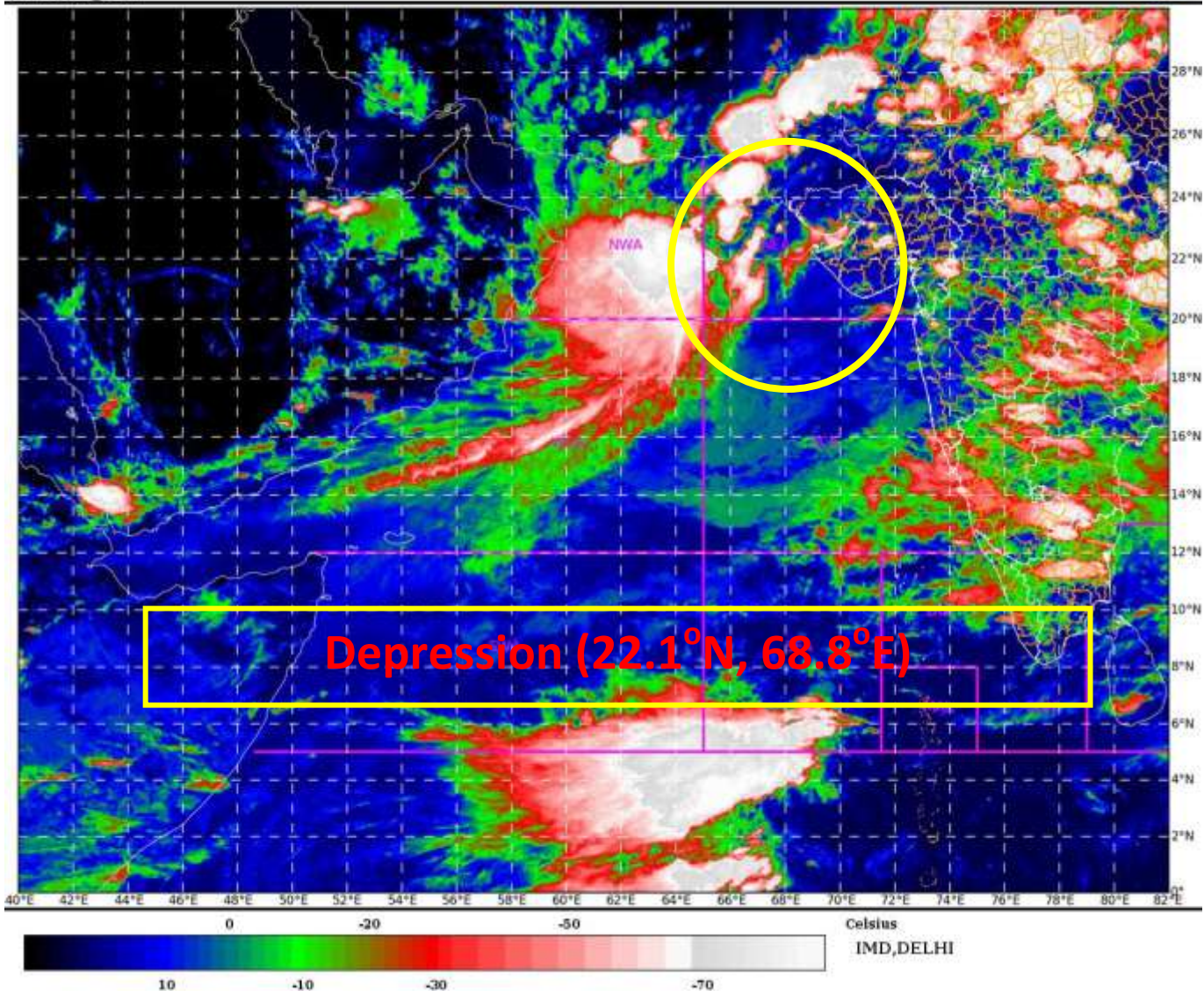
(A.K. DAS)
Scientist, RSMC, New Delhi

Copy to: ACWC Mumbai/ ACWC Chennai/ CWC Ahmedabad/CWCThiruvananthapuram/Mc Goa/MC Bengalurur

LEGEND: Heavy Rainfall: 64.5 to 115.5mm, **Very Heavy Rainfall:** 115.6 to 204.4mm **Most Places:** more than 76% of total stations, **Isolated Places:** Less than 25% of total

SAT : INSAT-3D IMG
IMG_TIR1_TEMP 10.8 um
ARABIAN SEA

16-07-2022/(1300 to 1326) GMT
16-07-2022/(1830 to 1856) IST





FORECAST TRACK OF DEPRESSION OVER NORTHEAST ARABIAN SEA OFF SAURASHTRA COAST BASED ON 1200 UTC OF 16th JULY 2022



DATE/TIME IN UTC

IST=UTC + 0530

L: LOW PRESSURE AREA

WML: WELL MARKED LOW PRESSURE AREA

D: DEPRESSION (17-27 KT)

DD: DEEP DEPRESSION (28-33 KT)

CS: CYCLONIC STORM (34-47 KT)

SCS: SEVERE CYCLONIC STORM (48-63KT)

VSCS: VERY SEVERE CYCLONIC STORM (64-89 KT)

ESCS: EXTREMELY SEVERE CYCLONIC STORM (90-119 KT)

SuCS: SUPER CYCLONIC STORM (\geq 120 KT)

● LESS THAN 34 KT

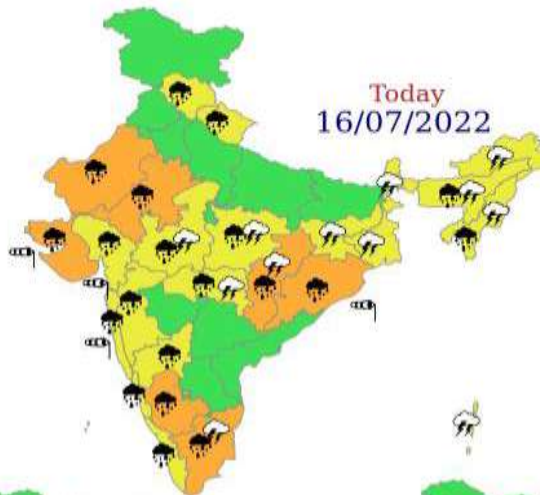
☪ 34-47 KT

☪ \geq 48 KT

▬ OBSERVED TRACK

▬ FORECAST TRACK

◀ CONE OF UNCERTAINTY



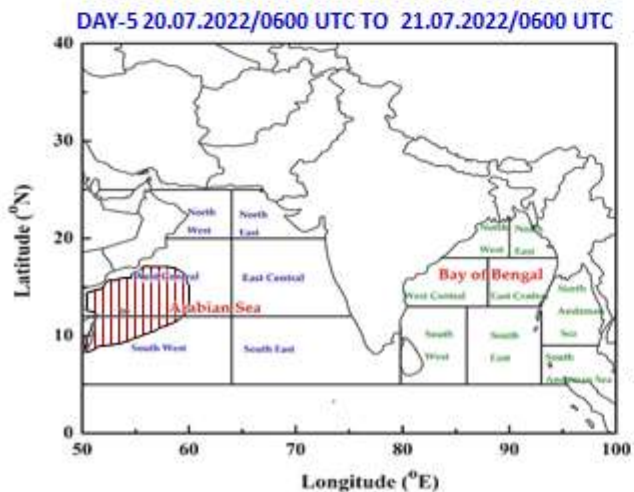
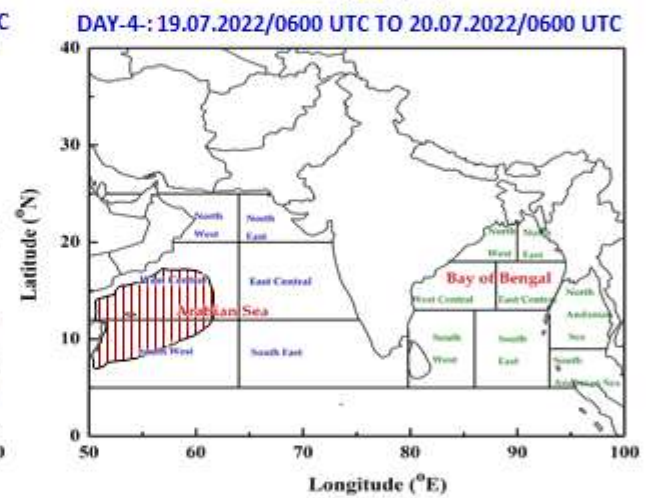
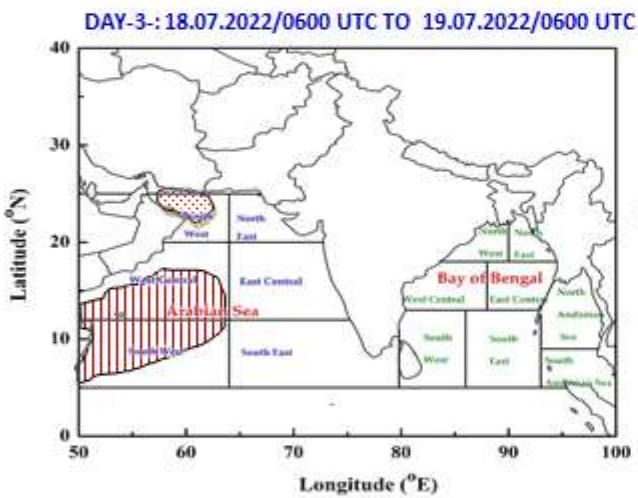
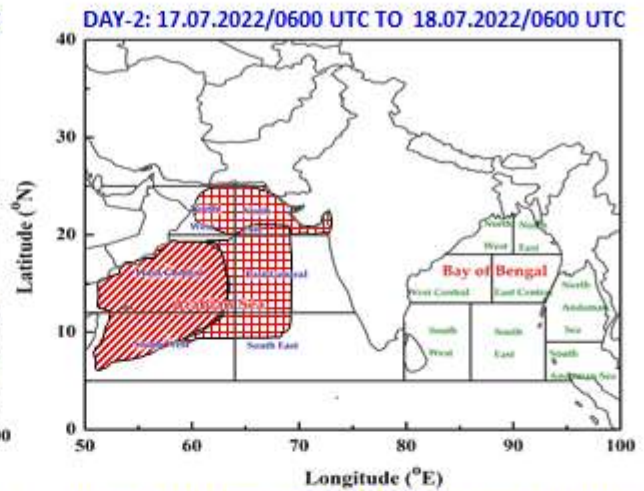
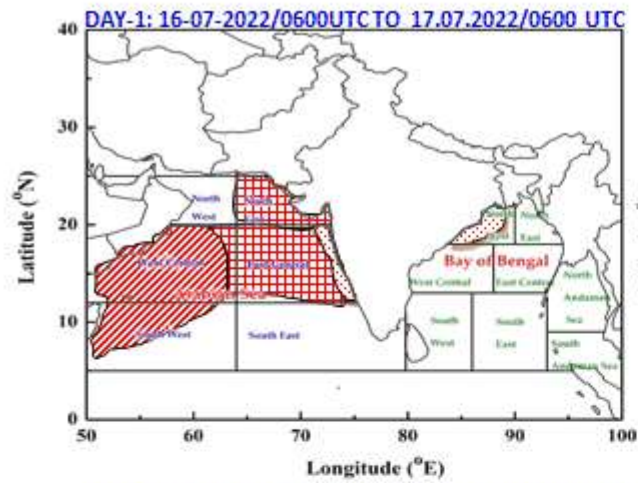
WARNING

WARNING (TAKE ACTION)
ALERT (BE PREPARED)
WATCH (BE UPDATED)
NO WARNING (NO ACTION)



- | | | | |
|--------------|------------|--------------|--------------|
| Heavy Rain | Heavy Snow | Thunderstorm | Dust Storm |
| Strong Winds | Visibility | Cyclone | Squall/ Hail |
| Frost | Cold Wave | Heat Wave | Sea State |

INDIA METEOROLOGICAL DEPARTMENT FISHERMAN WARNING FOR BAY OF BENGAL AND ARABIAN SEA



AREA UNDER FISHERMEN WARNING

- 40-50 KMPH GUSTING TO 60 KMPH (SQUALLY WEATHER)
- 45-55 KMPH GUSTING TO 65 KMPH (STRONG WIND)
- 45-55 KMPH GUSTING TO 65 KMPH (SQUALLY WEATHER)
- 50-60 KMPH GUSTING TO 70 KMPH (STRONG WIND)