



**India Meteorological Department  
(Ministry of Earth Sciences)**

**NATIONAL BULLETIN NO. 18 (BOB/10/2022)**

**TIME OF ISSUE: 1630 HOURS IST**

**DATED: 25.12.2022**

**FROM: INDIA METEOROLOGICAL DEPARTMENT (FAX NO. 24643965/24699216/24623220)**

**TO: CONTROL ROOM, NDM, MINISTRY OF HOME AFFAIRS (FAX.NO. 23093750)**

**CONTROL ROOM NDMA (FAX.NO. 26701729)**

**CABINET SECRETARIAT (FAX.NO.23012284, 23018638)**

**PS TO HON'BLE MINISTER FOR S & T AND EARTH SCIENCES (FAX NO.23316745)**

**SECRETARY, MOES (FAX NO. 24629777)**

**H.Q. (INTEGRATED DEFENCE STAFF AND CDS) (FAX NO. 23005137/23005147)**

**DIRECTOR GENERAL, DOORDARSHAN (23385843)**

**DIRECTOR GENERAL, AIR (23421105, 23421219)**

**PIB MOES (FAX NO. 23389042)**

**UNI (FAX NO. 23355841)**

**D.G. NATIONAL DISASTER RESPONSE FORCE (NDRF) (FAX NO. 26105912, 2436 3260)**

**DIRECTOR, PUNCTUALITY, INDIAN RAILWAYS (FAX NO. 23388503)**

**CHIEF SECRETARY, TAMIL NADU (FAX NO 044-25672304)**

**CHIEF SECRETARY, ANDHRA PRADESH (FAX NO. 0863-2441029, 08645-246600)**

**CHIEF SECRETARY, PUDUCHERRY (FAX NO 0413-2334145)**

**ADMINISTRATOR, ANDAMAN & NICOBAR ISLANDS (FAX NO. 03192- 232656)**

**CHIEF SECRETARY, KARNATAKA (FAX NO. 080-22258913)**

**CHIEF SECRETARY, KERALA (FAX NO. 0471-2327176)**

**ADMINISTRATOR, LAKSHADWEEP ISLANDS (FAX NO. 0413-262184)**

**Sub: Depression over Southwest Bay of Bengal crossed Sri Lanka coast**

The Depression over Southwest Bay of Bengal and adjoining Sri Lanka coast moved west-southwestwards with a speed of 18 kmph during past 06 hours, crossed Sri Lanka coast to the south of Trincomalee near latitude 8.35°N and longitude 81.4°E as a depression with maximum sustained wind speed of 45-55 kmph gusting to 65 kmph during 1230 to 1330 hrs IST. Thereafter, it continued to move west-southwestwards and weakened into a well marked low pressure area over Sri Lanka at 1430 hrs IST of today, the 25<sup>th</sup> December 2022.

It is likely to continue to move west-southwestwards and emerge into Comorin Area & neighbourhood by tomorrow, the 26<sup>th</sup> December morning.

**Warnings:**

**(i) Rainfall warning (Graphics enclosed)**

- Light to moderate rainfall at many places with heavy rainfall at isolated places is likely over south coastal Tamil Nadu on 25<sup>th</sup> & 26<sup>th</sup> December 2022.
- Light to moderate rainfall at a few places with heavy rainfall at isolated places is likely over south Kerala on 26<sup>th</sup> December 2022.
- Light to moderate rainfall at many places with heavy rainfall at isolated places is likely over Lakshadweep Islands on 27<sup>th</sup> December 2022.

**(ii) Wind warning (Graphics enclosed):**

**Southwest Bay of Bengal along & off Tamil Nadu and Sri Lanka coasts:**

Squally wind speed reaching 40-50 kmph gusting to 60 kmph is likely to prevail till 26<sup>th</sup> morning and decrease thereafter..

**Gulf of Mannar and Comorin Area along & off south Tamil Nadu & west Sri Lanka coasts:**

Squally weather with wind speed reaching 40-50 kmph gusting to 60 kmph on 25<sup>th</sup> and 26<sup>th</sup> December.

**Lakshadweep Islands & adjoining Southeast Arabian Sea:**

Squally weather with wind speed reaching 40-50 kmph gusting to 60 kmph is likely to prevail on 27<sup>th</sup> December.

**Southeast Arabian Sea & adjoining Lakshadweep Islands:**

Squally weather with wind speed reaching 40-50 kmph gusting to 60 kmph is likely to prevail on 28<sup>th</sup> December.

**Sea condition:**

**Southwest Bay of Bengal along & off Tamil Nadu and Sri Lanka coasts:**

Sea condition is likely to be rough to very rough till 26<sup>th</sup> December morning and improve thereafter.

**Gulf of Mannar and Comorin Area along & off south Tamil Nadu & west Sri Lanka coasts:**

Sea condition is likely to be rough to very rough on 25<sup>th</sup> and 26<sup>th</sup> December.

**Lakshadweep Islands & adjoining Southeast Arabian Sea:**

Sea condition is likely to be rough to very rough on 27<sup>th</sup> December.

**Southeast Arabian Sea & adjoining Lakshadweep Islands:**

Sea condition is likely to be rough on 28<sup>th</sup> December.

**Fishermen Warning (Graphics Enclosed):**

Fishermen are advised not to venture into

- Southwest Bay of Bengal and along & off Sri Lanka coast till 25<sup>th</sup> December.
- Gulf of Mannar, Comorin Area and along & off south Tamil Nadu and west Sri Lanka coasts during 25<sup>th</sup>-26<sup>th</sup> December.
- Sea areas of Lakshadweep Islands & adjoining Southeast Arabian Sea on 27<sup>th</sup> December.
- Sea areas of Southeast Arabian Sea & adjoining Lakshadweep Islands on 28<sup>th</sup> December.

**This is the last Bulletin associated with the system. However, The System is being monitored continuously for any further development as the well marked low pressure is expected to move to southeast Arabian Sea across Comorin area and regular bulletin will be continued from National Weather Forecasting Centre and regional meteorological centers/meteorological centers of India Meteorological Department.**

**(Ananda Kumar Das)**

**Scientist E, Cyclone Warning Division, New Delhi**

*Copy to:ACWC Mumbai & Chennai/ CWC Ahmedabad/ CWC Thiruvananthapuram/MC Goa*

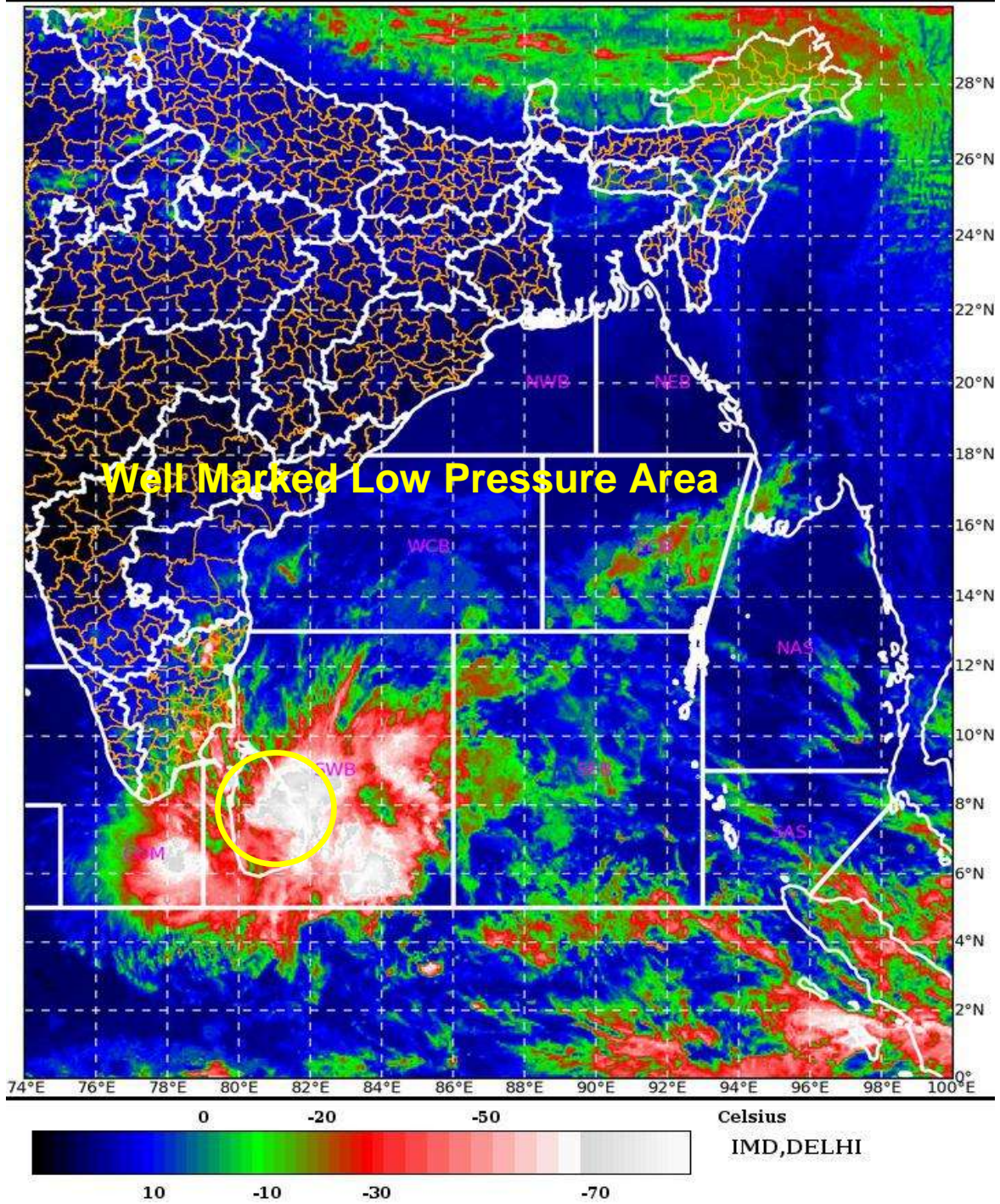
**LEGEND: Heavy Rainfall:** 64.5 to 115.5mm, **Very Heavy Rainfall:** 115.6 to 204.4mm **Most Places:** more than 76% of total stations, **Isolated Places:** Less than 25% of total

SAT : INSAT-3D IMG 25-12-2022/(1000 to 1026) GMT

IMG\_TIR1\_TEMP 10.8 um 25-12-2022/(1530 to 1556) IST



L1C Mercator








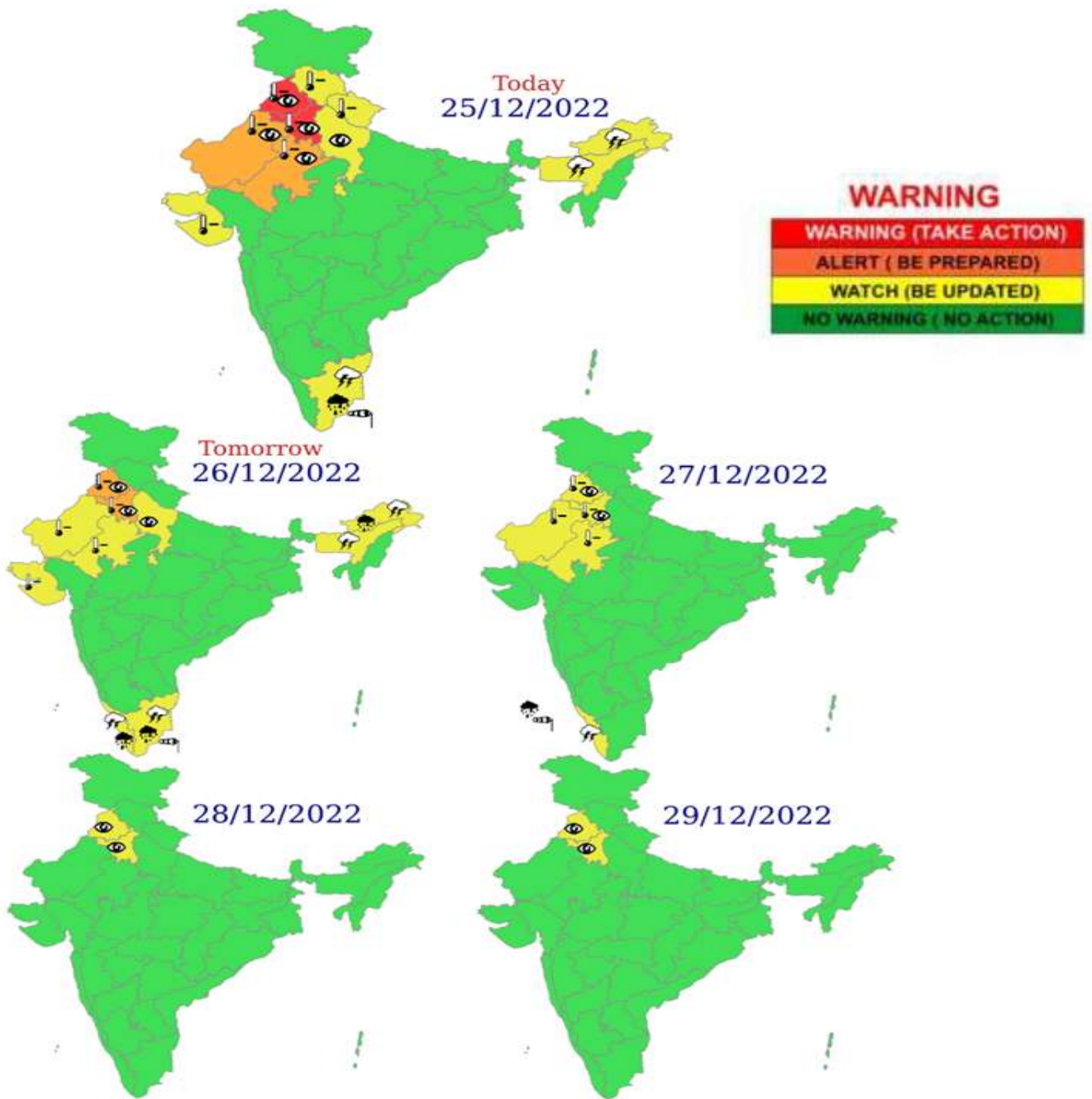
## OBSERVED TRACK OF DEPRESSION OVER SOUTHWEST BAY OF BENGAL (22<sup>ND</sup> TO 25<sup>TH</sup> DECEMBER 2022)



DATE/TIME IN UTC  
 IST=UTC + 0530  
 L: LOW PRESSURE AREA  
 WML: WELL MARKED LOW PRESSURE AREA  
 D: DEPRESSION (17-27 KT)  
 DD: DEEP DEPRESSION (28-33 KT)  
 CS: CYCLONIC STORM (34-47 KT)  
 SCS: SEVERE CYCLONIC STORM (48-63KT)  
 VSCS: VERY SEVERE CYCLONIC STORM (64-89 KT)  
 ESCS: EXTREMELY SEVERE CYCLONIC STORM (90-119 KT)  
 SuCS: SUPER CYCLONIC STORM ( $\geq 20$  KT)

-  LESS THAN 34 KT
-  34-47 KT
-   $\geq 48$  KT
-  OBSERVED TRACK
-  FORECAST TRACK
-  CONE OF UNCERTAINTY

# WEATHER WARNING GRAPHICS



- |  |  |  |  |
|--|--|--|--|
|  Heavy Rain   |  Heavy Snow |  Thunderstorm |  Dust Storm   |
|  Strong Winds |  Visibility |  Cyclone      |  Squall/ Hail |
|  Frost        |  Cold Wave  |  Heat Wave    |  Sea State    |



## Fishermen warning graphics

Day 1: 25.12.2022/11:30AM to 26.12.2022/05:30AM



Day 2: 26.12.2022/05:30AM to 27.12.2022/05:30AM



Day 3: 27.12.2022/05:30AM to 28.12.2022/05:30AM



Day 4: 28.12.2022/05:30AM to 29.12.2022/05:30AM



Day 5: 29.12.2022/05:30AM to 30.12.2022/05:30AM



Squally WX with wind speed 40-50 kmph gusting to 60 kmph

Squally wind speed 45-55 kmph gusting to 65 kmph

**Fishermen are advised not to venture into the marked areas.**