



India Meteorological Department  
(Ministry of Earth Sciences)

BULLETIN NUMBER: 06 (BOB/05/2021)

TIME OF ISSUE: 1700 HOURS IST

DATED: 11.11.2021

FROM: INDIA METEOROLOGICAL DEPARTMENT (FAX NO. 24643965/24699216/24623220)

TO: CONTROL ROOM, NDM, MINISTRY OF HOME AFFAIRS (FAX.NO. 23093750)  
CONTROL ROOM NDMA (FAX.NO. 26701729)  
CABINET SECRETARIAT (FAX.NO.23012284, 23018638)  
PS TO HON'BLE MINISTER FOR S & T AND EARTH SCIENCES (FAX NO.23316745)  
SECRETARY, MOES (FAX NO. 24629777)  
H.Q. (INTEGRATED DEFENCE STAFF AND CDS) (FAX NO. 23005137/23005147)  
DIRECTOR GENERAL, DOORDARSHAN (23385843)  
DIRECTOR GENERAL, AIR (23421105, 23421219)  
PIB MOES (FAX NO. 23389042)  
UNI (FAX NO. 23355841)  
D.G. NATIONAL DISASTER RESPONSE FORCE (NDRF) (FAX NO. 26105912, 2436 3260)  
DIRECTOR, PUNCTUALITY, INDIAN RAILWAYS (FAX NO. 23388503)  
CHIEF SECRETARY, ANDHRA PRADESH (FAX NO. 0863-2441029, 08645-246600)  
CHIEF SECRETARY, TAMIL NADU (FAX NO 044-25672304)  
CHIEF SECRETARY, PUDUCHERRY (FAX NO 0413-2334145)  
CHIEF SECRETARY, KERALA (FAX NO 0471-2327176)  
CHIEF SECRETARY, KARNATAKA (FAX NO 080-22258913)  
CHIEF SECRETARY, ANDAMAN & NICOBAR ISLANDS (FAX NO. 03192- 232656)

**Sub: Depression over southwest & adjoining west-central Bay of Bengal.**

The Depression over southwest & adjoining west-central Bay of Bengal moved west-northwestwards with a speed of 16 kmph during past 06 hours and lay centred at 1430 hrs IST of today, the 11<sup>th</sup> November 2021, over southwest & adjoining west-central Bay of Bengal, near Lat. 12.8°N and Long. 80.5°E, about 30 km southeast of Chennai and 110 km northeast of Puducherry. It is very likely to move northwestwards and cross north Tamil Nadu & adjoining south Andhra Pradesh coasts close to Chennai during next few hours.

Forecast track and intensity are given in the following table:

Date/Time(IST)	Position (Lat. °N/ long. °E)	Maximum sustained surfac wind speed (Kmph)	Category of cyclonic disturbance
11.11.21/1430	12.8/80.5	45-55 gusting to 65	Depression
11.11.21/1730	13.0/80.3	45-55 gusting to 65	Depression
11.11.21/2330	13.3/80.0	40-50 gusting to 60	Depression

**Warnings:**

**(i) Rainfall (warning graphics enclosed)**

- **11<sup>th</sup> Nov.:** Light to moderate rainfall at most places **with heavy to very heavy rainfall at a few places & extremely heavy falls at isolated places** very likely over north coastal Tamil Nadu, Puducherry, north interior Tamil Nadu, south coastal Andhra Pradesh and Rayalaseema and **heavy to very heavy rainfall** at isolated places over south interior Karnataka, Kerala and heavy rainfall at isolated places over north coastal Andhra Pradesh.

- **12<sup>th</sup> Nov.:** Light to moderate rainfall at most places with **heavy rainfall at isolated places** very likely over Tamil Nadu, Puducherry, coastal Andhra Pradesh, Rayalaseema, south interior Karnataka & Kerala.

**(ii) Wind warning**

- Squally wind speed reaching 45-55 kmph gusting to 65 kmph likely to prevail over southwest & adjoining westcentral Bay of Bengal and along & off Tamil Nadu, Puducherry & south Andhra Pradesh coasts on 11<sup>th</sup> November and reduce gradually from 12<sup>th</sup> morning.

**(iii) Sea condition**

- Sea condition will be rough to very rough over southwest & adjoining west-central Bay of Bengal and along & off Tamil Nadu, Puducherry & south Andhra Pradesh coasts till 12<sup>th</sup> November morning.

**(iv) Fishermen Warning**

- Fishermen are advised not to venture into southwest & adjoining west-central Bay of Bengal and along & off Tamil Nadu, Puducherry & south Andhra Pradesh coasts till 12<sup>th</sup> November morning. (Graphics enclosed).

**(v) EXPECTED IMPACT & ACTION SUGGESTED FOR NORTH Tamil Nadu (including Chennai, Puducherry & south Andhra Pradesh)**

**A. Impact Expected**

- Localized Flooding of roads, inundation and water logging in low lying areas and closure of underpasses mainly in urban areas of the above region.
- Occasional reduction in visibility due to heavy rainfall.
- Disruption of traffic in major cities due to water logging in roads leading to increased travel time.
- Minor damage to kutcha roads.
- Possibilities of damage to vulnerable structure.
- Localized Landslides/Mudslides
- Damage to horticulture including banana, Papaya & Drumstick and standing crops in some areas due to squally wind and inundation.
- It may lead to riverine flooding in some river catchments (for riverine flooding please visit Web page of CWC)

**B. Action Suggested**

- People in affected areas are advised to stay in safer places.
- Check for traffic congestion on your route before leaving for your destination.
- Follow any traffic advisories that are issued in this regard.
- Avoid going to areas that face the water logging problems often.
- Avoid staying in vulnerable structure.

***Next bulletin will be issued at 2030 hrs IST of today, the 11<sup>th</sup> November 2021.***

**(Sunitha Devi. S)**

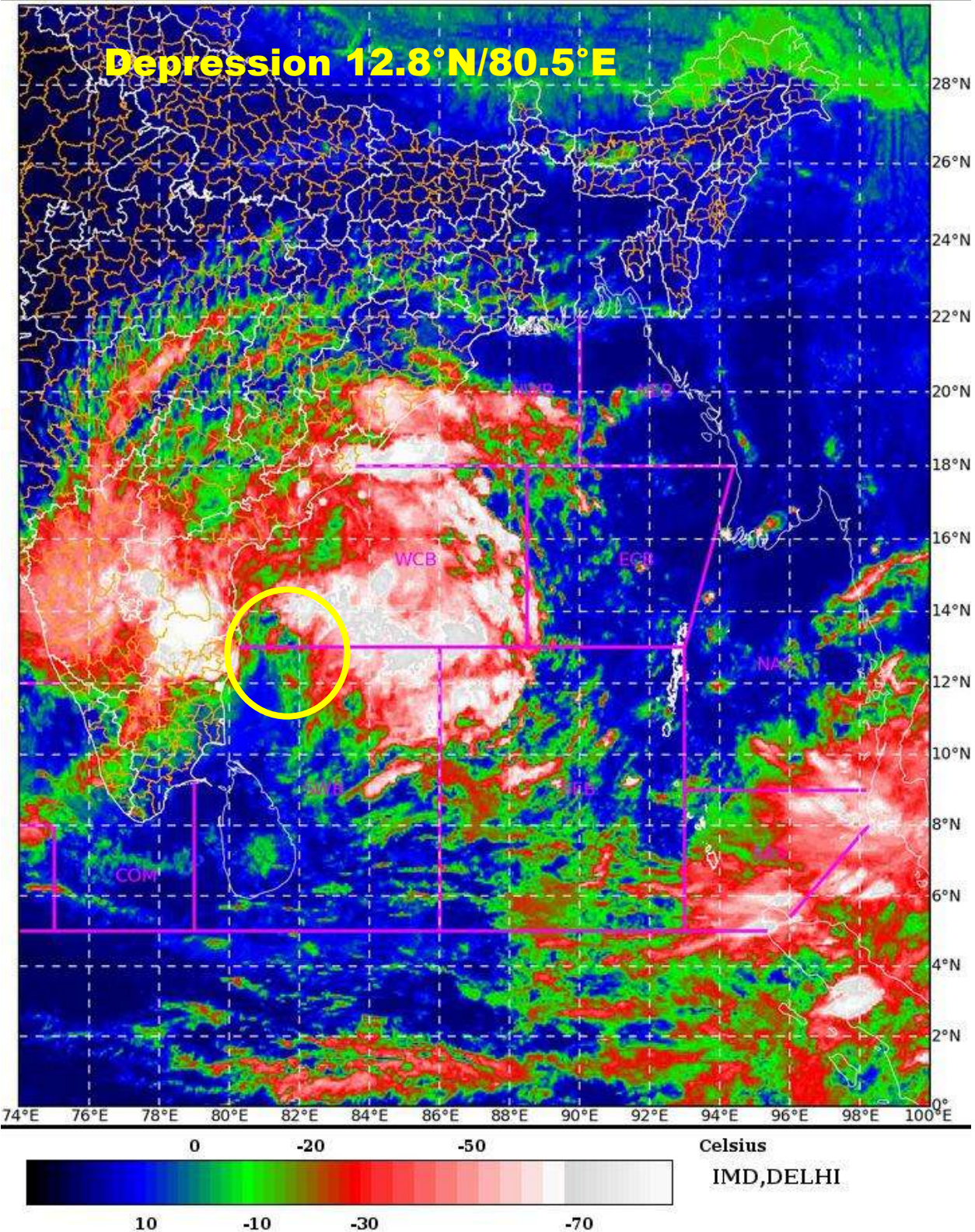
**Scientist-F, RSMC, New Delhi**

*Copy to: ACWC Mumbai/ CWC Ahmedabadr/MC Goa/CWC Thiruvanathapuram*

**LEGEND: Heavy Rainfall:** 64.5 to 115.5mm, **Very Heavy Rainfall:** 115.6 to 204.4mm **Most Places:** more than 76% of total stations, **Isolated Places:** Less than 25% of total stations



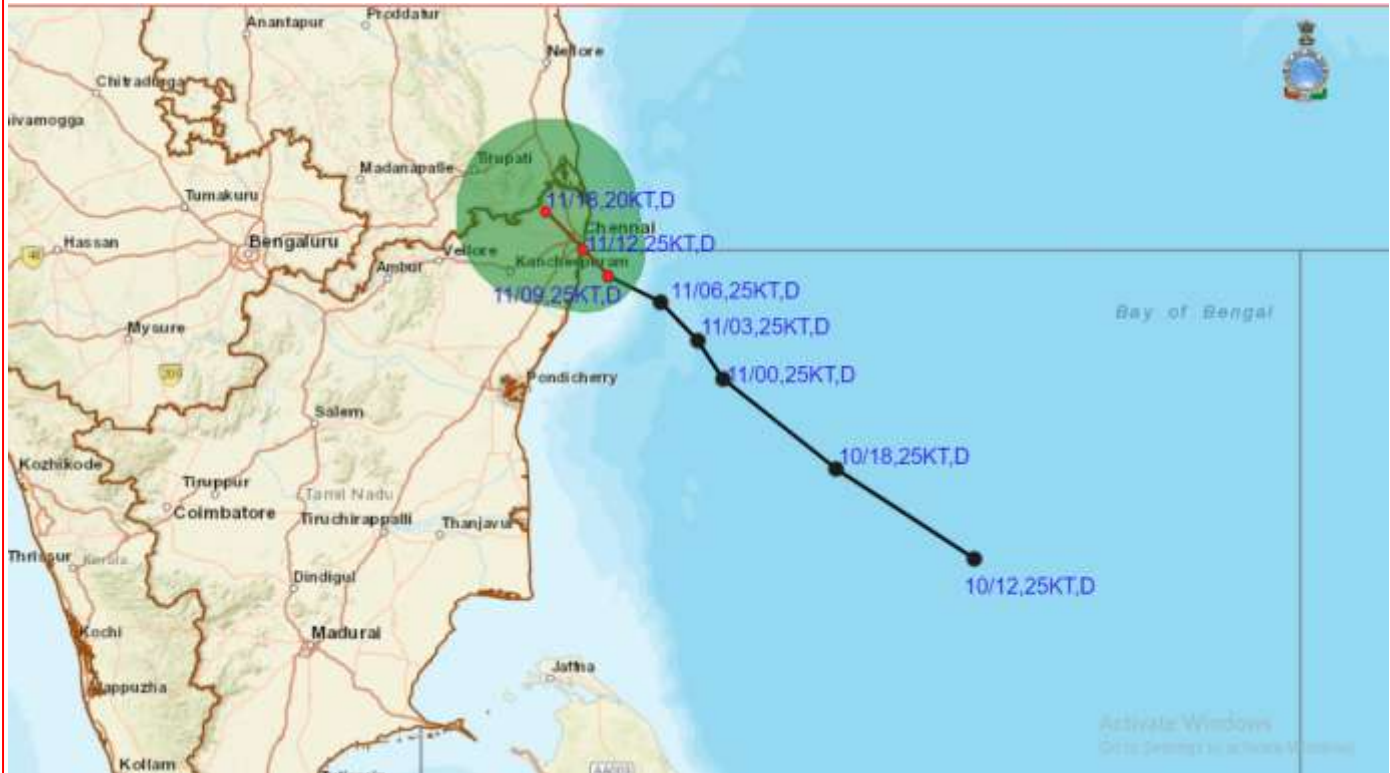
SAT : INSAT-3D IMG      11-11-2021/(1030 to 1056) GMT  
IMG\_TIR1\_TEMP 10.8 um    11-11-2021/(1600 to 1626) IST  
L1C Mercator







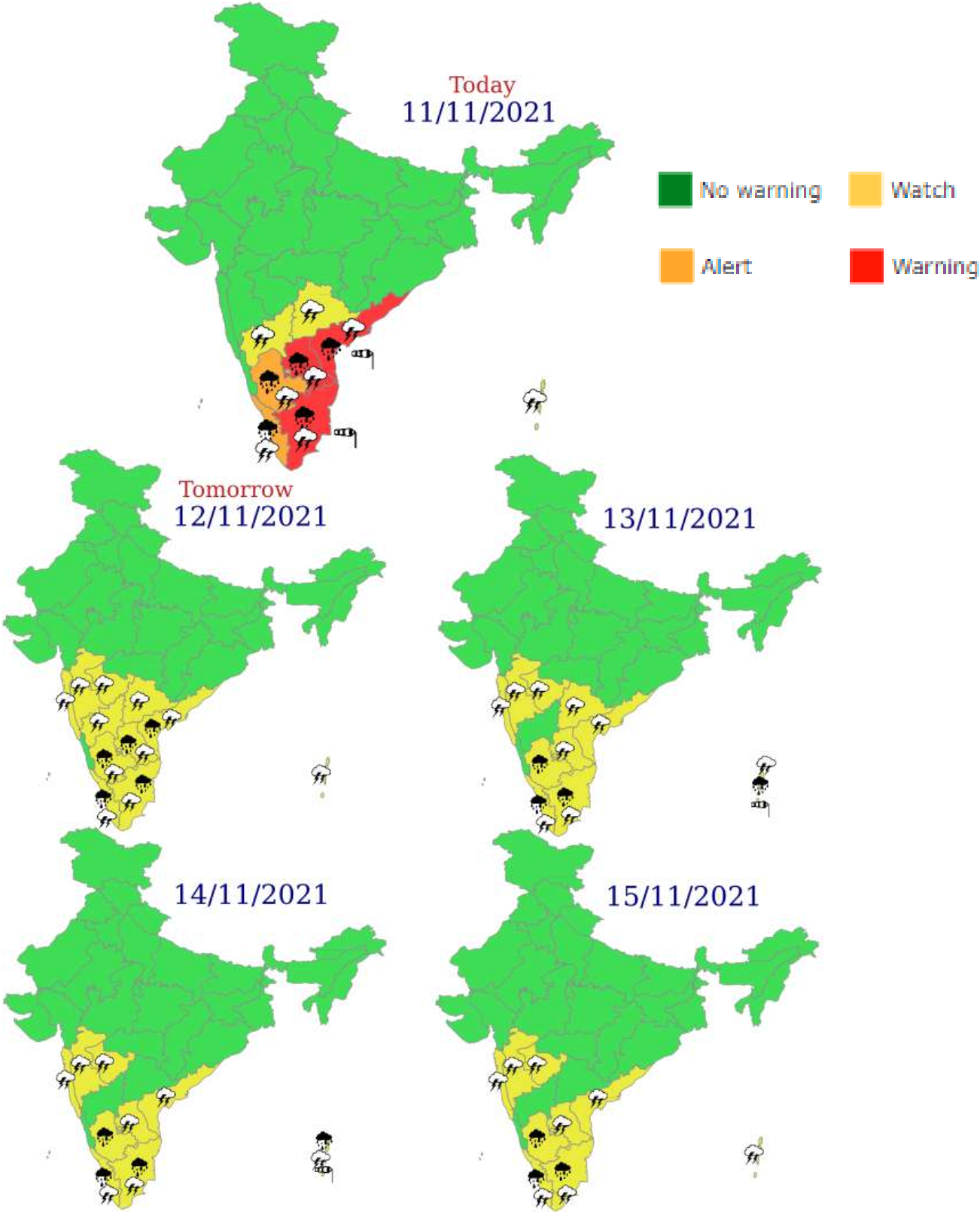
# OBSERVED AND FORECAST TRACK ALONGWITH CONE OF UNCERTAINTY OF DEPRESSION OVER SOUTHWEST & ADJOINING WESTCENTRAL BAY OF BENGAL BASED ON 0900 UTC OF 11<sup>TH</sup> NOVEMBER, 2021



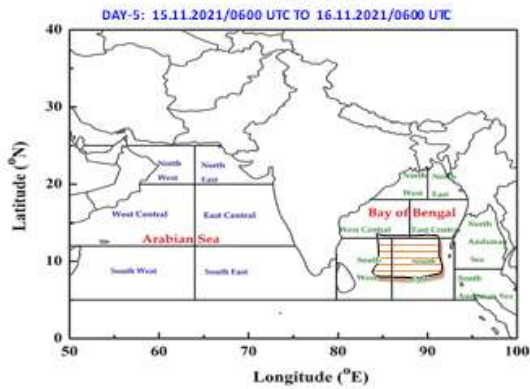
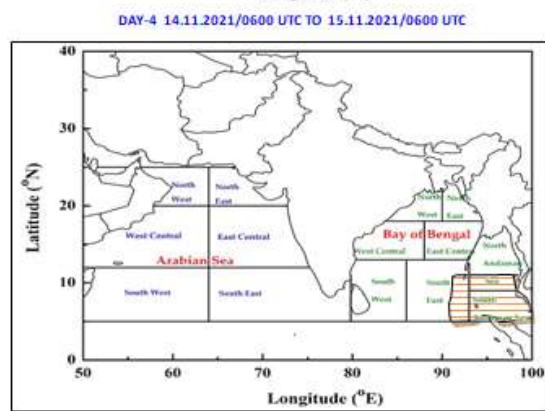
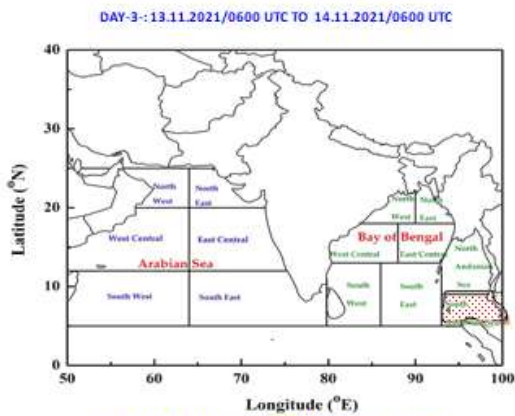
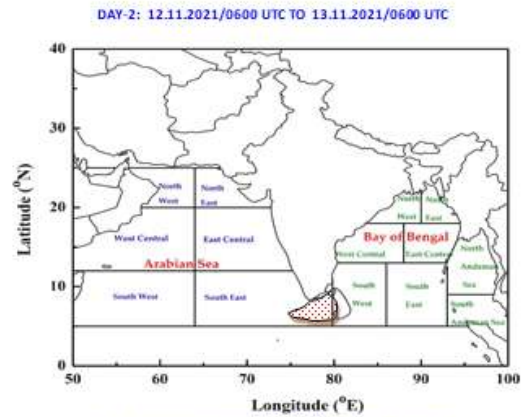
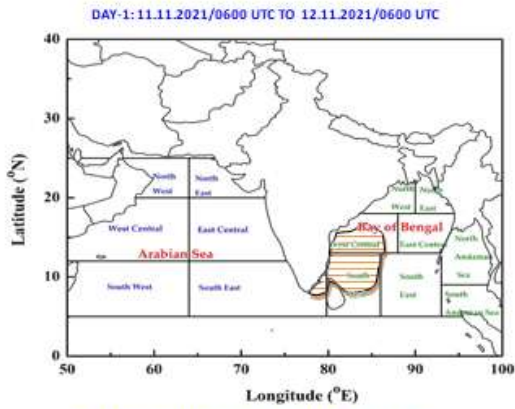
DATE/TIME IN UTC  
IST=UTC + 0530  
L: LOW PRESSURE AREA  
WML: WELL MARKED LOW PRESSURE AREA  
D: DEPRESSION (17-27 KT)  
DD: DEEP DEPRESSION (28-33 KT)  
CS: CYCLONIC STORM (34-47 KT)  
SCS: SEVERE CYCLONIC STORM (48-63KT)  
VSCS: VERY SEVERE CYCLONIC STORM (64-89 KT)  
ESCS: EXTREMELY SEVERE CYCLONIC STORM (90-119 KT)  
SuCS: SUPER CYCLONIC STORM ( $\geq$  120 KT)

- LESS THAN 34 KT
- 34-47 KT
- $\geq$  48 KT
- OBSERVED TRACK
- FORECAST TRACK
- CONE OF UNCERTAINTY

# Meteorological Sub-division level heavy rainfall warning



**INDIA METEOROLOGICAL DEPARTMENT**  
**FISHERMAN WARNING FOR BAY OF BENGAL AND ARABIAN SEA**



**AREA UNDER FISHERMEN WARNING**

- 40-50 KMPH GUSTING TO 60 KMPH (SQUALLY WEATHER)
- 45-55 KMPH GUSTING TO 60 KMPH (SQUALLY WEATHER)
- 50-60 KMPH GUSTING TO 70 KMPH (STRONG WIND)