



**India Meteorological Department
(Ministry of Earth Sciences)**

BULLETIN Number: 05 (BOB/03/2021)

TIME OF ISSUE: 1420 HOURS IST

DATED: 13.09.2021

FROM: INDIA METEOROLOGICAL DEPARTMENT (FAX NO. 24643965/24699216/24623220)

**TO: CONTROL ROOM, NDM, MINISTRY OF HOME AFFAIRS (FAX.NO. 23093750)
CONTROL ROOM NDMA (FAX.NO. 26701729)
CABINET SECRETARIAT (FAX.NO.23012284, 23018638)
PS TO HON'BLE MINISTER FOR S & T AND EARTH SCIENCES (FAX NO.23316745)
SECRETARY, MOES, (FAX NO. 24629777)
H.Q. (INTEGRATED DEFENCE STAFF AND CDS) (FAX NO. 23005137/23005147)
DIRECTOR GENERAL, DOORDARSHAN (23385843)
DIRECTOR GENERAL, AIR (23421105, 23421219)
PIB MOES (FAX NO. 23389042)
UNI (FAX NO. 23355841)
D.G. NATIONAL DISASTER RESPONSE FORCE (NDRF) (FAX NO. 26105912, 2436 3260)
DIRECTOR, PUNCTUALITY, INDIAN RAILWAYS (FAX NO. 23388503)
CHIEF SECRETARY, GOVT. OF ODISHA (FAX NO. 0674 -2536660)
CHIEF SECRETARY, GOVT. OF WEST BENGAL (FAX NO. 033-22144328)
CHIEF SECRETARY, ANDAMAN & NICOBAR ISLANDS (FAX NO. 03192- 232656)
CHIEF SECRETARY, ANDHRA PRADESH (FAX NO. 0863-2441029, 08645-246600)
CHIEF SECRETARY, JHARKHAND (FAX NO. 0651-2400255)
CHIEF SECRETARY, TELANGANA (FAX NO. 040-23453700)
CHIEF SECRETARY, CHATTISGARH (FAX NO 0771-2221206)
CHIEF SECRETARY, GOA (FAX NO. 0832-2415201)
CHIEF SECRETARY, MAHARASHTRA (FAX NO. FAX NO. 022- 22028594)
CHIEF SECRETARY, GUJARAT (FAX NO. 079-23250305)
CHIEF SECRETARY, MADHYA PRADESH (FAX NO. 0755-2441076)**

Sub: Deep Depression over north Odisha

The Deep Depression over north coastal Odisha moved further west-northwestwards during past 6 hours with a speed of 16 kmph, and lay centred at 1130 hrs IST of today, the 13th September, 2021, over north Odisha, near latitude 21.1°N and longitude 86.2°E, about 70 km west-northwest of Chandbali and about 90 km east- southeast of Keonjhar (Odisha).

It is very likely to continue to move west-northwestwards across north interior Odisha, north Chhattisgarh & Madhya Pradesh during next 48 hours. It is very likely to weaken into a Depression during the next 24 hours.

Warnings:

(i) Rainfall

- Light to moderate rainfall at most places: with heavy to very heavy rainfall at a few places & extremely heavy falls at isolated places very likely over Odisha & Saurashtra and heavy to very heavy rainfall & extremely heavy falls at isolated places very likely over Chhattisgarh, South Gujarat region and north Konkan (Palghar District) on 13th September and over southwest Madhya Pradesh, south Gujarat region and Saurashtra on 15th September.
- Light to moderate rainfall at many places: with isolated heavy to very heavy falls very likely over north Madhya Maharashtra on 13th & 14th September, heavy rainfall at isolated places

over Madhya Pradesh and Vidarbha on 13th, very heavy rainfall at isolated places over Madhya Pradesh on 14th and over east Madhya Pradesh on 15th.

(ii) Light to moderate rainfall at many places: with isolated heavy falls over north coastal Andhra Pradesh, Gangetic West Bengal, Jharkhand and Telangana on 13th.

(iii) Wind warning

- Squally wind speed reaching 50-60 kmph to gusting 70 kmph very likely over north & adjoining westcentral Bay of Bengal and along & off Odisha, West Bengal and North Andhra Pradesh coasts during next 12 hours and decrease gradually becoming 40 -50 kmph gusting to 60 kmph during the subsequent 12 hours.

(iv) Sea condition

- Sea condition will be rough to very rough over north & adjoining westcentral Bay of Bengal and along & off Odisha, West Bengal & North Andhra Pradesh coasts during next 12 hours.

(iv) Fishermen Warning

- The fishermen are advised not to venture into north & adjoining westcentral Bay of Bengal and along & off Odisha, West Bengal & North Andhra Pradesh coasts during next 12 hours.

(v) EXPECTED IMPACT & ACTION SUGGESTED Due to very Heavy/Extremely heavy Rainfall over Odisha & Chhattisgarh on 13th, Madhya Pradesh on 13th & 14th, north Konkan, Madhya Maharashtra and Vidarbha during 13th-14th September 2021.

A. Impact Expected

- Localized Flooding of roads, inundation and water logging in low lying areas and closure of underpasses mainly in urban areas of the above region.
- Occasional reduction in visibility due to heavy rainfall.
- Disruption of traffic in major cities due to water logging in roads leading to increased travel time.
- Minor damage to kutch roads. Possibilities of damage to vulnerable structure.
- Localized Landslides/Mudslides
- Damage to horticulture and standing crops in some areas due to inundation and strong winds.
- It may lead to riverine flooding in some river catchments (for riverine flooding please visit Web page of Central Water Commission)

B. Action Suggested

- Check for traffic congestion on your route before leaving for your destination.
- Follow any traffic advisories that are issued in this regard.
- Avoid going to areas that face the water logging problems often.
- Avoid staying in vulnerable structure.
- Follow IMD warnings for updates

Realised rainfall over Odisha:

Accumulated realised rainfall over Odisha (**>7 cm**) during past 24 hours (0830 hours IST of 12th to 0830 hours IST of 13th Sep., 2021) is given in **Annexure**.

The next bulletin will be issued at 2030 hrs IST of 13thSeptember, 2021.

(Sunitha Devi)
Scientist-F, RSMC, New Delhi

Copy to: ACWC Kolkata/ Chennai/Mumbai CWC Bhubaneswar/CWC Visakhapatnam/CWC Ahmedabad/ MC Ranchi/MC Hyderabad/MC Raipur/MC Goa/MC Bhopal

LEGEND: Heavy Rainfall: 64.5 to 115.5mm, **Very Heavy Rainfall:** 115.6 to 204.4mm, **Extremely Heavy Rainfall:** 204.5mm or more. **Many Places:** 51% to 75% of the stations, **Most Places:** more than 76% of total stations, **Isolated Places:** Less than 25% of total stations



OBSERVED AND FORECAST TRACK OF DEEP DEPRESSION OVER NORTH ODISHA BASED ON 0600 UTC OF 13TH SEPTEMBER, 2021



DATE/TIME IN UTC

IST=UTC + 0530

L: LOW PRESSURE AREA

WML: WELL MARKED LOW PRESSURE AREA

D: DEPRESSION (17-27 KT)

DD: DEEP DEPRESSION (28-33 KT)

CS: CYCLONIC STORM (34-47 KT)

SCS: SEVERE CYCLONIC STORM (48-63KT)

VSCS: VERY SEVERE CYCLONIC STORM (64-89 KT)

ECS: EXTREMELY SEVERE CYCLONIC STORM (90-119 KT)

SuCS: SUPER CYCLONIC STORM \geq 120 KT)

LESS THAN 34 KT

34-47 KT

\geq 48 KT

OBSERVED TRACK

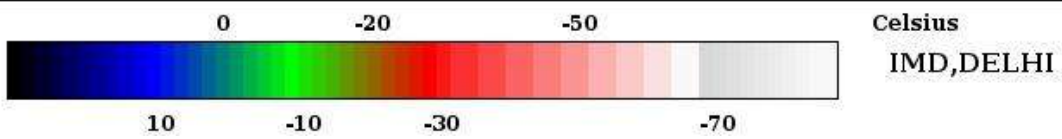
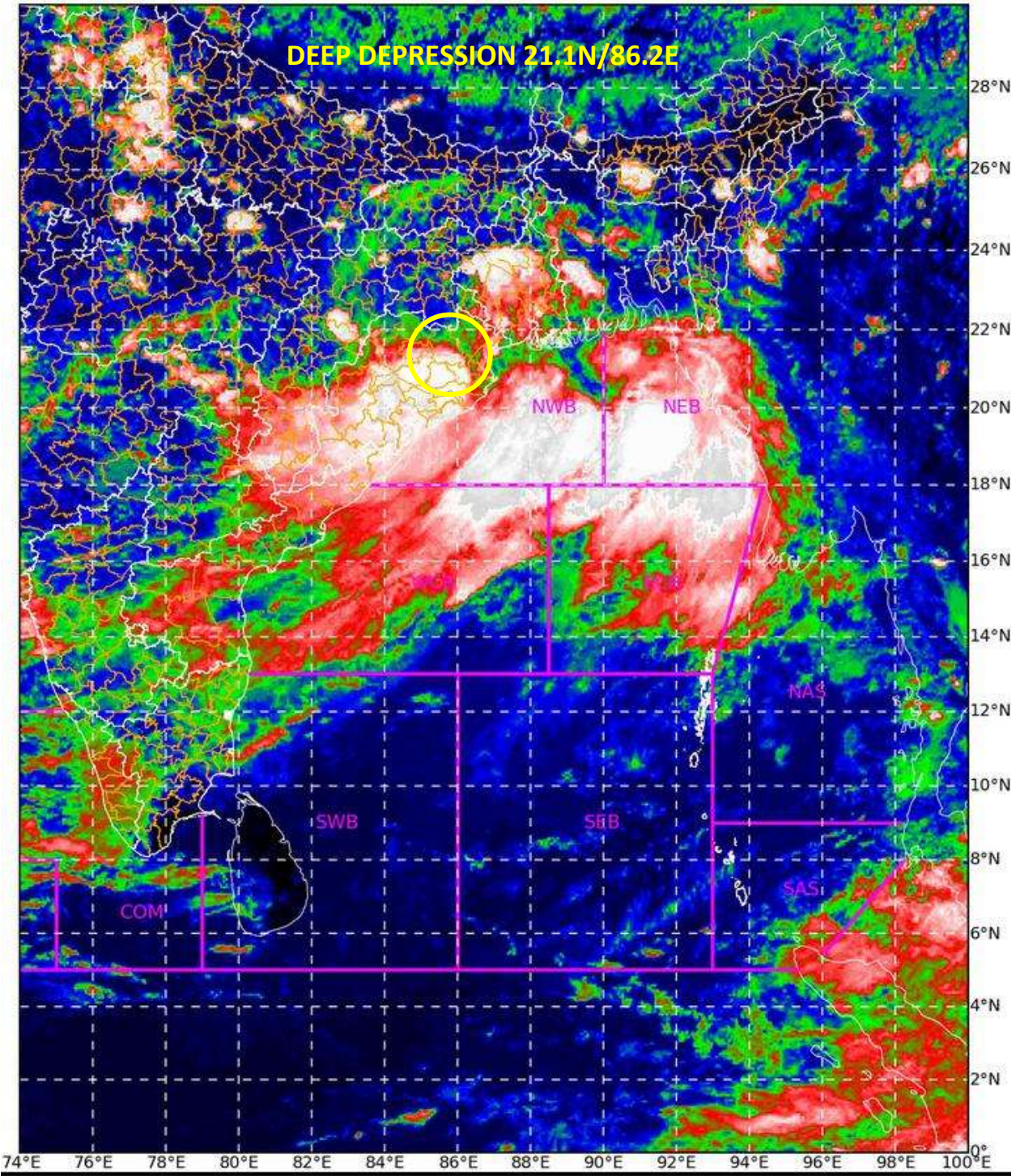
FORECAST TRACK

CONE OF UNCERTAINTY

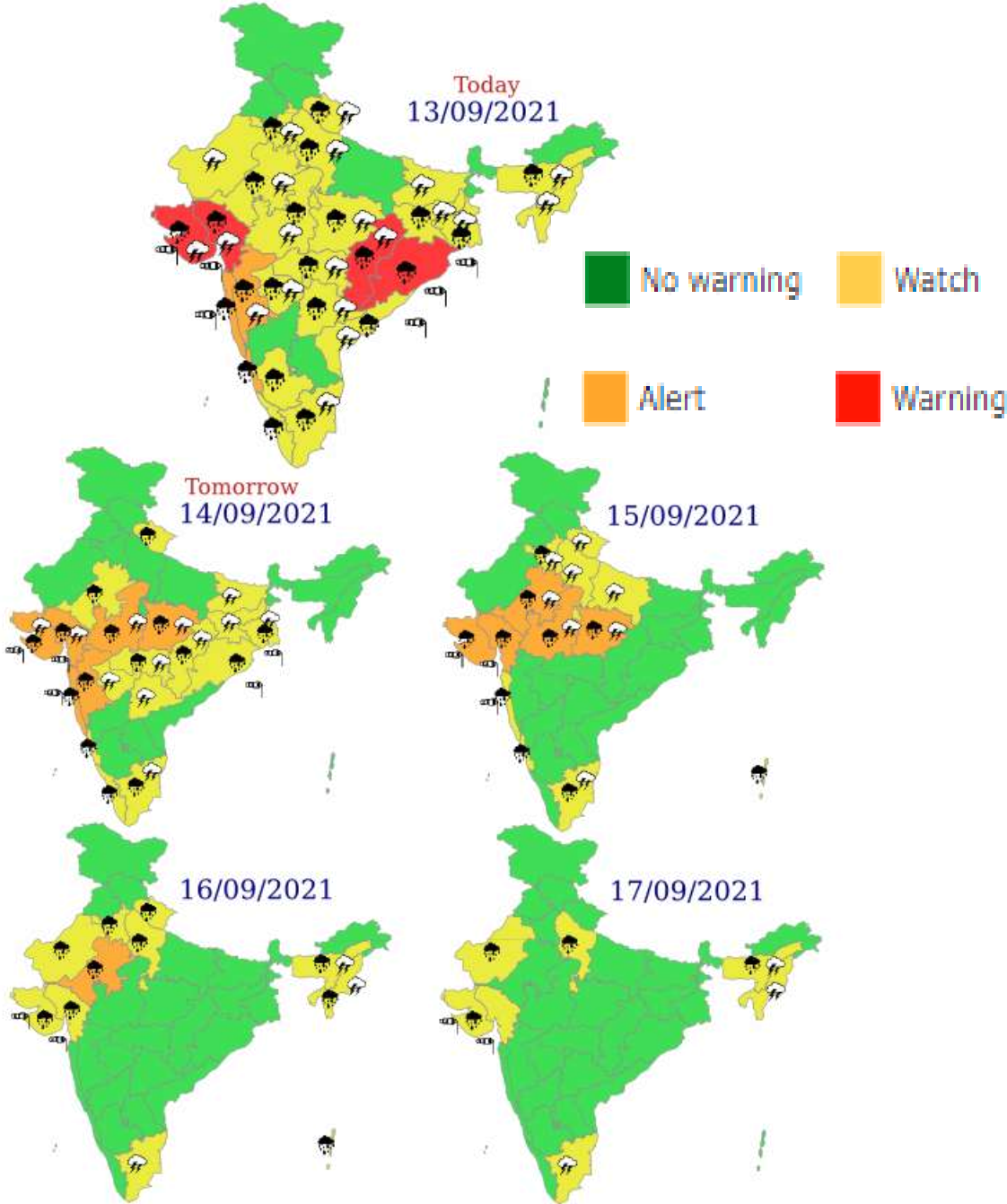
SAT : INSAT-3D IMG 13-09-2021/(0730 to 0756) GMT

IMG_TIR1_TEMP 10.8 um 13-09-2021/(1300 to 1326) IST

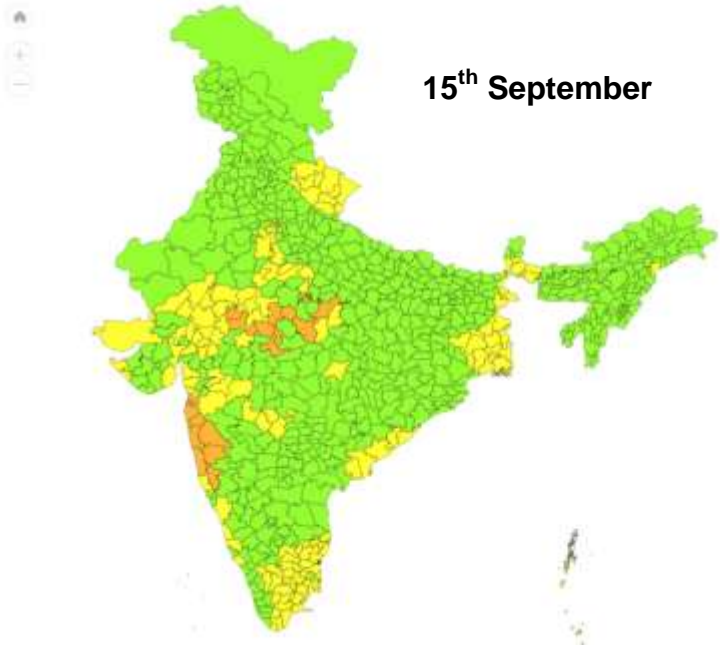
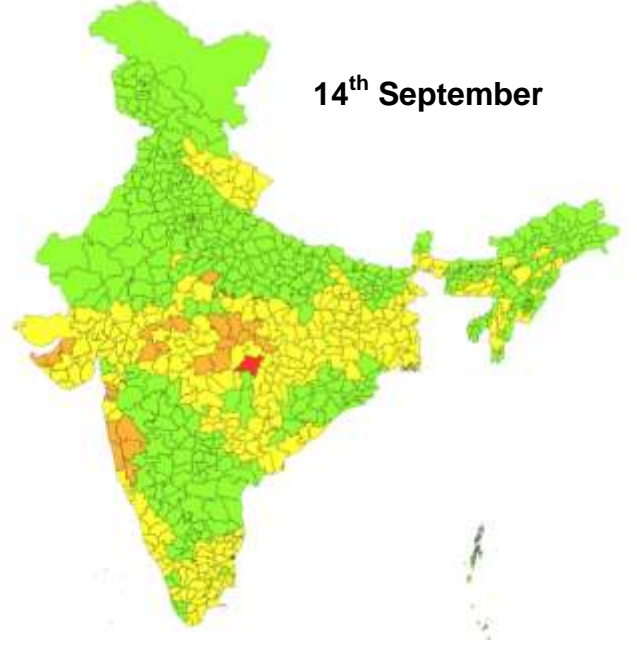
L1C Mercator



Meteorological Sub-division level heavy rainfall warning



District level level heavy rainfall warning



Annexure

Accumulated realised rainfall over Odisha (cm) during past 24 hours

(0830 hours IST of 12th to 0830 hours IST of 13th Sep., 2021)

Astaranga (Puri) 53, Kakatpur (Puri) 53, Balikuda (Jagatsinghpur) 44, Kantapada (Cuttack) 38, Niali (Cuttack) 37, Alipingal (Jagatsinghpur) 36, Puri (Puri) 34, Gop (Puri) 33, Satyabadi (Puri) 33, Raghunathpur (Jagatsinghpur) 32, Nimpura (Puri) 30, Kendrapara (Kendrapara) 28, Marsaghai (Kendrapara) 27, Kujanga (Jagatsinghpur) 27, Jagatsinghpur (Jagatsinghpur) 26, Pipili (Puri) 26, Tirtol (Jagatsinghpur) 25, Brahmagiri (Puri) 24, Paradeep Cwr (Jagatsinghpur) 22, Chandikhol (Jajpur) 22, Derabis (Kendrapara) 21, Tangi (Khurda) 20, Birmaharajpur (Sonepur) 20, Bhubaneswar Aero (Khurda) 20, Boudhgarh (Boudhgarh) 18, Balipatna (Khurda) 18, Krishnaprasad (Puri) 18, Garadapur (Kendrapara) 17, Nayagarh (Nayagarh) 15, Khandapara (Nayagarh) 15, Naraj (Cuttack) 15, Ullunda (Sonepur) 15, Harabhanga (Boudhgarh) 15, Phulbani (Kandhamal) 15, Binjharpur (Jajpur) 15, Bolagarh (Khurda) 15, Mahanga (Cuttack) 15, Sonepur (Sonepur) 15, Khairamal (Boudhgarh) 14, Salepur (Cuttack) 14, Banpur (Khurda) 14, Odagaon (Nayagarh) 13, Mundali (Cuttack) 13, Bari (Jajpur) 13, Ranpur (Nayagarh) 13, Banki (Cuttack) 12, Jajpur (Jajpur) 12, Cuttack (Cuttack) 12, Daspalla (Nayagarh) 11, Jenapur (Jajpur) 11, Rairakhol (Sambalpur) 11, Barmul (Nayagarh) 10, Lakhampur (Jharsuguda) 10, Korei (Jajpur) 9, Kalinga (Kandhamal) 9, Tikarpara (Angul) 9, Rairangpur (Mayurbhanj) 9, Phiringia (Kandhamal) 9, Akhuapada (Bhadrak) 9, Jharsuguda (Jharsuguda) 9, Danagadi (Jajpur) 8, Sukinda (Jajpur) 8, Athgarh (Cuttack) 8, Jujumura (Sambalpur) 8, Bhuban (Dhenkanal) 8, Jagannath Prasad (Ganjam) 8, Tikabali (Kandhamal) 7, Belpada (Bolangir) 7, Gopalpur (Ganjam) 7, Dhamnagar (Bhadrak) 7, Narsinghpur (Cuttack) 7, Lahunipara (Sundargarh) 7, Burla (Sambalpur) 7, Dhenkanal (Dhenkanal) 7