



India Meteorological Department

(Ministry of Earth Sciences)

BULLETIN NO. : 09 (BOB/03/2020)

TIME OF ISSUE: 2010 HOURS IST

DATED: 23.10.2020

FROM: INDIA METEOROLOGICAL DEPARTMENT (FAX NO. 24643965/24699216/24623220)

TO: CONTROL ROOM, NDM, MINISTRY OF HOME AFFAIRS (FAX.NO. 23093750)

CONTROL ROOM NDMA (FAX.NO. 26701729)

CABINET SECRETARIAT (FAX.NO.23012284, 23018638)

PS TO HON'BLE MINISTER FOR S & T AND EARTH SCIENCES (FAX NO.23316745)

SECRETARY, MOES, (FAX NO. 24629777)

H.Q. (INTEGRATED DEFENCE STAFF AND CDS) (FAX NO. 23005137/23005147)

DIRECTOR GENERAL, DOORDARSHAN (23385843)

DIRECTOR GENERAL, AIR (23421105, 23421219)

PIB MOES (FAX NO. 23389042)

UNI (FAX NO. 23355841)

D.G. NATIONAL DISASTER RESPONSE FORCE (NDRF) (FAX NO. 26105912, 2436 3260)

DIRECTOR, PUNCTUALITY, INDIAN RAILWAYS (FAX NO. 23388503)

CHIEF SECRETARY, GOVT. OF ODISHA (FAX NO. 0674 -2536660)

CHIEF SECRETARY, ANDHRA PRADESH (FAX NO. 0863-2441029, 08645-246600)

CHIEF SECRETARY, TAMIL NADU (FAX NO. 044-25672304)

CHIEF SECRETARY, ANDAMAN & NICOBAR ISLANDS (FAX NO. 03192- 232656)

CHIEF SECRETARY, WEST BENGAL (FAX NO. 033-22144328)

CHIEF SECRETARY, NAGALAND (FAX NO. 0370-2270057)

CHIEF SECRETARY, MANIPUR (FAX NO. 0385) – 2449402)

CHIEF SECRETARY, MIZORAM (FAX NO. 0389 2322745)

CHIEF SECRETARY, TRIPURA (FAX NO. 0381 2414013 / 2351122)

CHIEF SECRETARY, ASSAM (FAX NO. 0361-2260900)

CHIEF SECRETARY, MEGHALAYA (FAX NO. 0364 - 2225978)

Sub: Depression over Bangladesh

The **Depression** over Bangladesh moved north-northeastwards with a speed of 34 kmph during past 6 hours and lay centred at 1730 hrs IST of today, the 23rd October, 2020 over Bangladesh, near latitude 23.3°N and longitude 89.5°E, about 160 km north-northwest of Khepupara (Bangladesh), 100 km west-southwest of Dhaka (Bangladesh) and about 190 km west-southwest of Agartala (Tripura).

It is very likely to move further north-northeastwards maintaining the intensity of Depression for next 12 hours and weaken thereafter into a Well Marked Low pressure area over Bangladesh.

Forecast track and intensity are given in the following table:

Date/Time(IST)	Position (Lat. °N/ long. °E)	Maximum sustained surface wind speed (Kmph)	Category of cyclonic disturbance
23.10.20/1730	23.3/89.5	40-50 gusting to 60	Depression
24.10.20/0530	24.3/90.1	20-30 gusting to 40	Well Marked Low

Warnings:

(i) Rainfall warning (for north-eastern States)

- ✓ **23rd October 2020:** Light to moderate rainfall at most places with heavy to very heavy falls (**115.6-204.4 mm/day**) at a few places very likely over Nagaland, Manipur, Mizoram, Tripura, south Assam & Meghalaya. Light to moderate rainfall at many places with heavy rainfall at isolated places likely over remaining districts of Assam.
- ✓ **24th October 2020:** Light to moderate rainfall at many places with **Isolated heavy falls** likely over Assam, Meghalaya, Nagaland, Manipur, Mizoram & Tripura

Spatial rainfall distribution: Isolated: <25%, A few: 26-50%, Many: 51-75%, Most: 76-100%

Rainfall amount (mm): Heavy rain: 64.5 – 115.5, Very heavy rain: 115.6 – 204.4, Extremely heavy rain: 204.5 or more.

(ii) Wind warning

- ✓ Squally winds speed reaching 40-50 kmph gusting to 60 kmph would occur over North Bay of Bengal during next 12 hours.
- ✓ Squally wind speed reaching 40-50 kmph gusting to 60 Kmph also very likely along & off West Bengal-Bangladesh coasts during next 12 hours.

(iii) Sea condition

- ✓ Sea condition will be rough to very rough over North Bay of Bengal during next 12 hours.
- ✓ Sea condition will be rough to very rough along & off West Bengal-Bangladesh coasts during next 12 hours.

(iv) Fishermen Warning

Fishermen are advised not to venture into North Bay of Bengal and along & off West Bengal-Bangladesh coasts during next 12 hours.

(v) Impact expected over south Assam, east Meghalaya, Nagaland, Manipur, Mizoram & Tripura on 23rd October, 2020:

- Localized Flooding of roads, water logging in low lying areas and closure of underpasses mainly in urban areas of the above region.
- Possibility of Landslides in hilly areas of Northeastern states.
- Occasional reduction in visibility due to heavy rainfall.
- Disruption of traffic in cities.
- Minor damage to kutchra roads.
- Possibilities of damage to vulnerable structure.
- Damage to horticulture and standing crops in some areas due to inundation and squally winds.
- It may lead to riverine flooding in some river catchments (for riverine flooding. Kindly visit website of Central Water Commission (<http://www.cwc.gov.in/>))

-For specific district wise impact kindly visit IMD's state level meteorological center websites (https://mausam.imd.gov.in/ind_latest/contents/departamentalweb.php) and national website (<https://mausam.imd.gov.in/>).

(vi) Action Suggested:

- Attempt to protect Wildlife, Flora, Fauna, Sanctuaries in Sundarbans.
- Check for traffic congestion on your route before leaving for your destination.
- Follow any traffic advisories that are issued in this regard.
- Avoid going to areas that face water logging problem and squally winds.
- Avoid staying in vulnerable structure

.The next bulletin will be issued at 0230 hrs IST of 24th October, 2020.

(Sunitha Devi)
Scientist-E, RSMC, New Delhi

Copy to: ACWC Kolkata/ Chennai/ CWC Bhubaneswar/CWC Visakhapatnam

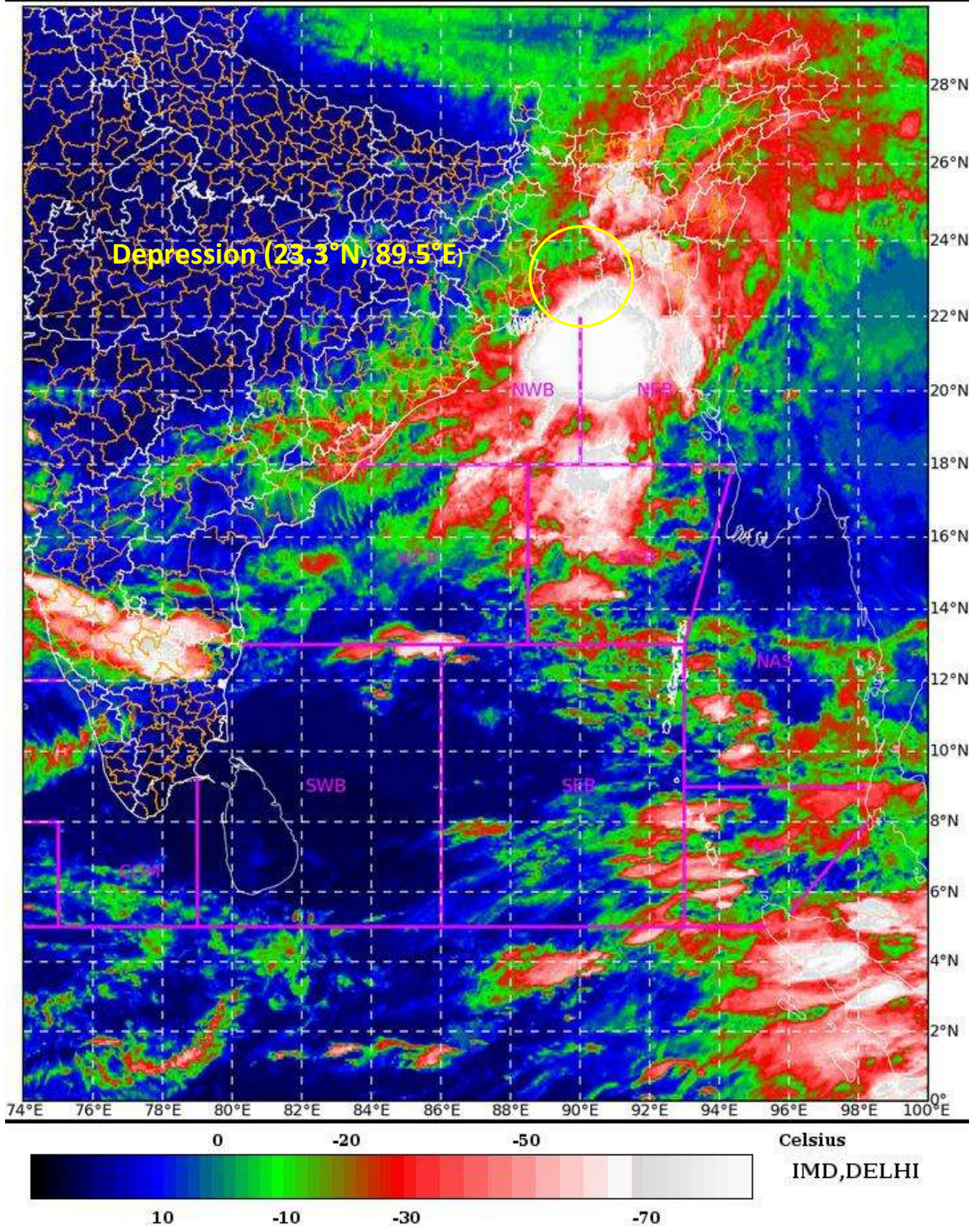
SAT : INSAT-3D IMG

23-10-2020/(1330 to 1356) GMT

IMG_TIR1_TEMP 10.8 um

23-10-2020/(1900 to 1926) IST

L1C Mercator



Spatial rainfall distribution: Isolated: <25%, A few: 26-50%, Many: 51-75%, Most: 76-100%
Rainfall amount (mm): Heavy rain: 64.5 – 115.5, Very heavy rain: 115.6 – 204.4, Extremely heavy rain: 204.5 or more.



OBSERVED AND FORECAST TRACK ALONGWITH CONE OF UNCERTAINTY OF DEPRESSION OVER BANGLADESH BASED ON 1200 UTC OF 23rd OCTOBER 2020



DATE/TIME IN UTC
 IST=UTC + 0530
 L: LOW PRESSURE AREA
 WML: WELL MARKED LOW PRESSURE AREA
 D: DEPRESSION (17-27 KT)
 DD: DEEP DEPRESSION (28-33 KT)
 CS: CYCLONIC STORM (34-47 KT)
 SCS: SEVERE CYCLONIC STORM (48-63KT)
 VSCS: VERY SEVERE CYCLONIC STORM (64-89 KT)
 ESCS: EXTREMELY SEVERE CYCLONIC STORM (90-119 KT)
 SuCS: SUPER CYCLONIC STORM (\geq 120 KT)

- LESS THAN 34 KT
- 34-47 KT
- \geq 48 KT
- OBSERVED TRACK
- FORECAST TRACK
- CONE OF UNCERTAINTY

Spatial rainfall distribution: Isolated: <25%, A few: 26-50%, Many: 51-75%, Most: 76-100%
 Rainfall amount (mm): Heavy rain: 64.5 – 115.5, Very heavy rain: 115.6 – 204.4, Extremely heavy rain: 204.5 or more.