



**India Meteorological Department
(Ministry of Earth Sciences)**

National Bulletin No. 38 (AS/03/2025)/(BOB/07/2025)

TIME OF ISSUE: 1640 HOURS IST

DATED: 28.10.2025

FROM: INDIA METEOROLOGICAL DEPARTMENT (FAX NO. 24643965/24699216/24623220)

TO: CONTROL ROOM, NDM, MINISTRY OF HOME AFFAIRS (FAX.NO. 23093750)

CONTROL ROOM NDMA (FAX.NO. 26701729)

CABINET SECRETARIAT (FAX.NO.23012284, 23018638)

PS TO HON'BLE MINISTER FOR S & T AND EARTH SCIENCES (FAX NO.23316745)

SECRETARY, MOES (FAX NO. 24629777)

H.Q. (INTEGRATED DEFENCE STAFF AND CDS) (FAX NO. 23005137/23005147)

D.G. NATIONAL DISASTER RESPONSE FORCE (NDRF) (FAX NO. 26105912, 2436 3260)

DIRECTOR, PUNCTUALITY, INDIAN RAILWAYS (FAX NO. 23388503)

DIRECTOR GENERAL, DOORDARSHAN (23385843)

DIRECTOR GENERAL, AIR (23421105, 23421219)

PIB MOES (FAX NO. 23389042)

UNI (FAX NO. 23355841)

CHIEF SECRETARY, GUJARAT (FAX NO. 079-23250305)

CHIEF SECRETARY, MAHARASHTRA (FAX NO. 022- 22028594)

CHIEF SECRETARY, DADRA & NAGAR HAVELI (FAX NO. 0260-2645466)

CHIEF SECRETARY, DAMAN & DIU (FAX NO. 0260-2230775)

CHIEF SECRETARY, GOA (FAX NO. 0832-2415201)

CHIEF SECRETARY, KARNATAKA (FAX NO. 080-22258913)

CHIEF SECRETARY, KERALA (FAX NO. 0471-2327176)

CHIEF SECRETARY, LAKSHADWEEP (FAX NO. 04896-268124)

CHIEF SECRETARY, ANDHRA PRADESH (FAX NO. 0863-2441029)

CHIEF SECRETARY, TAMIL NADU (FAX NO. 044-25672304)

CHIEF SECRETARY, PUDUCHERRY (FAX NO. 0413-2334145)

CHIEF SECRETARY, ANDAMAN & NICOBAR ISLANDS (FAX NO. 03192-232656)

CHIEF SECRETARY, WEST BENGAL (FAX NO. 033-22144328)

CHIEF SECRETARY, ODISHA (FAX NO. 0674-2536660)

CHIEF SECRETARY, TELANGANA (FAX NO. 040-23453700)

CHIEF SECRETARY, CHHATTISGARH (FAX NO. 0771-2221206)

CHIEF SECRETARY, JHARKHAND (FAX NO. 0651-2400255)

CHIEF SECRETARY, BIHAR (FAX NO. 0612-2217085)

CHIEF SECRETARY, WEST BENGAL (FAX NO. 033-22144328)

CHIEF SECRETARY, GOVT. OF SIKKIM (FAX NO.0359-2222851)

Subject: (A) Severe Cyclonic Storm "Montha" [Pronunciation: Mon-Tha] over Westcentral Bay of Bengal: Cyclone warning for Andhra Pradesh, Yanam and adjoining South Odisha coasts (Red Message) and (B) Depression over eastcentral Arabian Sea

(A) Severe Cyclonic Storm "Montha" [Pronunciation: Mon-Tha] over Westcentral Bay of Bengal

The Severe Cyclonic Storm "Montha" [Pronunciation: Mon-Tha] over westcentral Bay of Bengal moved north-northwestwards with a speed of 15 kmph during past 6 hours and lay centered at 1430 hrs IST of today, the 28th October 2025, over the same region, near latitude

15.6°N and longitude 82.5°E, about 70 km south-southeast of Machilipatnam (Andhra Pradesh), 150 km south-southeast of Kakinada (Andhra Pradesh), 250 km south-southwest of Visakhapatnam (Andhra Pradesh) and 480 km south-southwest of Gopalpur (Odisha).

It will continue to move north-northwestwards and cross Andhra Pradesh coast between Machilipatnam and Kalingapatnam around Kakinada during evening/night of today, the 28th October as a severe cyclonic storm with a maximum sustained wind speed of 90-100 kmph gusting to 110 kmph.

The system is currently being monitored continuously by Doppler Weather Radar (DWR) at Machilipatnam and Visakhapatnam in addition to coastal observatories, automatic weather stations (AWSs), ships & buoys and satellites.

Forecast track and intensity are given in the following table:

Date/ Time (IST)	Position (Lat. °N/ long. °E)	Maximum sustained surface wind speed (Kmph)	Category of cyclonic disturbance
28.10.25/1430	15.6/82.5	90-100 gusting to 110	Severe Cyclonic Storm
28.10.25/1730	16.0/82.4	90-100 gusting to 110	Severe Cyclonic Storm
28.10.25/2330	16.7/82.3	85-95 gusting to 105	Severe Cyclonic Storm
29.10.25/0530	17.4/82.1	70-80 gusting to 90	Cyclonic Storm
29.10.25/1730	19.1/81.6	45-55 gusting to 65	Depression
30.10.25/0530	20.9/81.2	25-35 gusting to 45	Well Marked Low Pressure Area

Warning:

(i) Rainfall Warning (Graphics Enclosed):

Tamil Nadu, Puducherry & Karaikal: Light to moderate rainfall is very likely at most places with **heavy to very heavy rainfall** at isolated places on 28th October.

Andhra Pradesh & Yanam of Puducherry: Light to moderate rainfall is very likely at most places with **heavy to very heavy rainfall** at a few places with **extremely heavy rainfall (> 20 cm)** at isolated places till 29th October. Light to moderate rainfall is very likely at many places with **heavy rainfall** at isolated places over north coastal Andhra Pradesh on 30th October.

Odisha: Light to moderate rainfall is very likely at most places with **heavy to very heavy rainfall** at a few places and **extremely heavy rainfall (>20 cm)** at isolated places over south Odisha and isolated **heavy to very heavy rainfall** over north Odisha on till 29th October. Isolated **heavy rainfall** is likely over Odisha on 30th October.

Telangana: Light to moderate rainfall is very likely at most places with isolated **heavy to very heavy rainfall** till 29th October.

Chhattisgarh: Light to moderate rainfall is very likely at most places and **heavy to very heavy rainfall** with **extremely heavy rainfall (> 20 cm)** at isolated places over south Chhattisgarh on 28th October. Isolated **heavy to very heavy rainfall** at isolated places is very likely on 29th October. Isolated **heavy rainfall** is likely on 30th October.

Gangetic West Bengal: Light to moderate rainfall is very likely at most places with **heavy rainfall** at isolated places till 31st October.

Sub-Himalayan West Bengal & Sikkim: Light to moderate rainfall is very likely at a few places with isolated **heavy rainfall** on 30th October and **heavy to very heavy rainfall** on 31st October.

Jharkhand: Light to moderate rainfall is very likely at many places with **heavy rainfall** at isolated places during 29th to 31st October.

Bihar: Light to moderate rainfall is very likely at many places with **heavy rainfall** at isolated places on 29th October with **heavy to very heavy rainfall** on 30th & 31st October.

(ii) Wind warning (Graphics Enclosed):

- ❖ Gale wind speed reaching 90-100 kmph gusting to 110 kmph likely to continue to prevail over Westcentral & adjoining areas of southwest Bay of Bengal till night of 28th October. The squally wind speed reaching 30-40 kmph gusting to 50 kmph is prevailing over adjoining areas of northwest Bay of Bengal and likely to increase becoming gale wind speed reaching 60-70 kmph gusting to 80 kmph over the same region from evening of 28th till 29th morning and decrease gradually becoming squally wind speed reaching 35-45 kmph gusting to 55 kmph on 30th October morning.
- ❖ **Along & Off Andhra Pradesh & Yanam Coasts:** Gale wind speed reaching 60-70 kmph gusting to 80 kmph is prevailing along & off Andhra Pradesh & Yanam (of Puducherry) coasts, becoming 90-100 kmph gusting to 110 kmph from 28th evening to early hours of 29th October. It would decrease gradually to 60-70 kmph gusting to 80 kmph by 29th October noon, along and off North Andhra Pradesh and Yanam coasts. The winds would be squally wind speed reaching 45-55 kmph gusting 65 kmph by 29th October evening and decrease gradually thereafter over the region.
- ❖ **Along & Off Tamil Nadu & Puducherry Coasts:** Squally weather with wind speed reaching 45-55 kmph gusting to 65 kmph is prevailing along & off Tamil Nadu - Puducherry coast and it is likely to decrease gradually.
- ❖ **Along & Off Odisha Coast:** Squally weather with wind speed reaching 45-55 kmph gusting to 65 kmph is prevailing along & off south Odisha coast, it is likely to increase becoming gale wind speed reaching, 60-70 kmph gusting to 80 kmph from 28th evening to early hours of 29th October early hours. It would be squally wind speed reaching 45-55 kmph gusting to 65 kmph along and off south Odisha coast till 29th October evening and decrease gradually thereafter. Squally wind speed reaching 50-60 kmph gusting to 70 kmph is likely to prevail along and off north Odisha coast from 28th evening to early hours of 29th October, 40-50 kmph gusting to 60 kmph till 29th October evening, and decrease gradually thereafter.
- ❖ **Along & Off West Bengal coast:** Squally weather with wind speed reaching 35-45 kmph gusting to 55 kmph is likely to prevail along & off west Bengal coast from 28th to 29th October.

(iii) Sea conditions (Graphics Enclosed):

- ❖ Sea condition is very likely to be very high over westcentral Bay of Bengal till 29th early hours. Thereafter, it is likely to improve becoming high to very rough by noon of 29th and becoming very rough to rough during subsequent 12 hours. Moderate to rough sea conditions is prevailing over adjoining areas of northwest Bay of Bengal. It is likely to worsen becoming very rough to high till 29th morning and thereafter gradually improve becoming rough till 30th morning.
- ❖ **Along & Off Andhra Pradesh & Yanam Coasts:** Sea condition is likely to be high to very high till 29th October early hours. Thereafter, it would improve becoming high till noon of 29th October and very rough to rough during subsequent 12 hours.

- ❖ **Along & Off Odisha Coast:** Sea condition is high from 28th morning to till 29th October early hours. It is likely improve gradually becoming very rough to rough during subsequent 12 hours.
- ❖ **Along & Off Tamil Nadu & Puducherry Coasts:** Sea condition is very likely to be rough to very rough along & off Tamil Nadu - Puducherry coast till 28th October evening.
- ❖ **Along & Off West Bengal coast:** Sea condition is very likely to be rough along & off West Bengal coasts during 28th-29th October and improve thereafter.

(iv) Storm Surge Warning (Graphics Enclosed):

Strom surge of height about 1 m above astronomical tide is likely to cause inundation over low-lying areas of coastal Andhra Pradesh & Yanam (of Puducherry) around the landfall time.

(v) 24 hours Outlook for the Flash Flood Risk (FFR) till 0530 IST of tomorrow, the 29th October is enclosed.

(vi) Fishermen Warning (Graphics Enclosed):

Fishermen are advised not to venture into Southwest, adjoining central Bay of Bengal, along & off Tamil Nadu - Andhra Pradesh & Yanam (of Puducherry) and Odisha coasts till 29th October and along & off West Bengal coast during 28th-29th October. Those out at sea area should return to the coast immediately.

(vii) Impact Expected and Action Suggested due to heavy rain and strong winds (Andhra Pradesh & Yanam of Puducherry [Tirupati, Annamayya, Nellore, YSR Kadapa, Prakasham, Bapatla, Chittor, Nadyal, Palnadu, Guntur, Krishna, East & West Godavari, Konaseema, Kakinada, Anakapalli, Alluri Seetharamaraju, Visakhapatnam, Eluru, Vizianagaram, Srikakulam, Parvathi Puram Manyam] and South Odisha coasts [Ganjam, Gajapati, Rayagada, Malkangiri, Koraput, Nawarangpur, Kalahandi, Kandhamal, Nuapada, Boudh])

- ❖ Major damage to thatched houses/ huts. Roof tops may blow off. Unattached metal sheets may fly.
- ❖ Damage to power and communication lines.
- ❖ Major damage to Kutcha and some damage to Pucca roads. Flooding of escape routes.
- ❖ Breaking of tree branches, uprooting of large avenue trees. Large-scale damage to banana and papaya trees. Large dead limbs blown from trees.
- ❖ Damage to paddy crops, horticultural and standing crops and orchards due to inundation & winds.
- ❖ Inundation of low-lying areas in coastal districts due to heavy rainfall and flash flood
- ❖ Localized Flooding of roads, water logging in low lying areas and closure of underpasses mainly in urban areas.
- ❖ Occasional reduction in visibility due to heavy rainfall.
- ❖ Disruption of traffic due to water logging and squally winds
- ❖ Localized Landslides/Mudslides It may lead to riverine flooding in some river catchments (for riverine flooding please visit Web page of CWC)
- ❖ Damage to embankments/ salt pans.
- ❖ Possibility of coastal flooding and coastal erosion is also very likely over coastal districts of north Andhra Pradesh & Yanam.

Action suggested:

- ❖ Total suspension of fishing operations.
- ❖ Coastal hutment dwellers to be moved to safer places. People in affected areas to remain indoors.

- ❖ Movement in motor boats unsafe.
- ❖ Judicious regulation of offshore/onshore operations
- ❖ People are advised to keep a watch on the weather for worsening conditions and be ready to move to safer places accordingly.
- ❖ Take safe shelters; do not take shelter under trees, as there could be lightning.
- ❖ In case of expected lightning, unplug electrical/ electronic appliances, immediately, get out of water bodies and keep away from all the objects that conduct electricity.
- ❖ Tourism and recreational activities to be regulated.
- ❖ Surface transport and helicopter services to be regulated.

(B) Depression over Eastcentral Arabian Sea

The Depression over eastcentral Arabian Sea moved northeastwards with a speed of 7 kmph during past 6 hours and lay centered at 1430 hrs IST of today, the 28th October 2025, over the same region, near latitude 17.3°N & longitude 68.2°E, about 480 km southwest of Veraval (Gujarat), 530 km west-southwest of Mumbai (Maharashtra), 630 km west-northwest of Panjim (Goa), 840 km northwest of Aminidivi (Lakshadweep) and about 870 km northwest of Mangalore (Karnataka).

It is likely to move nearly northeastwards across Eastcentral Arabian Sea during next 36 hours.

Warnings:

(i) Rainfall Warning:

Coastal Karnataka: Light to moderate rainfall at most places with isolated **heavy rainfall** on 28th October.

Konkan & Goa: Light to moderate rainfall at many places with **heavy rainfall** at isolated places over Konkan and Goa till 29th October.

Gujarat region: Light to moderate rainfall at many places with **heavy to very rainfall** at isolated places likely over Gujarat State on 31st October and **heavy rainfall** at isolated places till 30st October.

Saurashtra & Kutch: Light to moderate rainfall at many places with **heavy to very heavy rainfall** at isolated places till 31st October.

Kerala: Light to moderate rainfall at most places with **heavy rainfall** at isolated places very likely on 28th October.

(ii) Wind warning:

Squally wind with speed reaching 45-55 gusting to 65 kmph prevailing around the system center and continue to prevail over Eastcentral and adjoining Southeast Arabian Sea till 28th October.

Squally weather with wind speed reaching 45-55 kmph gusting to 65 kmph is very likely to prevail over northeast Arabian Sea and along & off Maharashtra and Gujarat coasts till 30th October.

(iii) Sea condition:

Sea Condition is likely to be rough to very rough over Eastcentral Arabian Sea till 30th October and over Southeast Arabian Sea till 28th October evening.

Sea Condition is likely to be rough over Lakshadweep & Comorin Area and along & off Karnataka and Kerala coasts till 28th October evening.

Sea Condition is likely to be moderate to rough over northeast Arabian Sea and along & off Maharashtra and Gujarat coasts till 28th October, rough to very rough during 29th to 30th October.

(iv) Fishermen warnings:

Fishermen are advised not to venture into Eastcentral Arabian Sea till 29th, Southeast Arabian Sea till 28th October, Lakshadweep & Comorin Area and along & off Karnataka and Kerala coasts till 28th October, northeast Arabian Sea and along & off Maharashtra and Gujarat coasts till 30th October.

(v) 24 hours Outlook for the Flash Flood Risk (FFR) till 0530 IST of tomorrow, the 29th October is enclosed.

(vi) Impact Expected and Action Suggested due to heavy rain and strong winds (Kerala, coastal Karnataka, Konkan & Goa and Gujarat state)

Impact expected:

- ❖ Breaking of tree branches. Strong wind and heavy rain may damage plantation, horticulture and standing crops.
- ❖ Minor damage to kutcha houses/walls, huts and roads due to strong winds and heavy rain.
- ❖ Road and rail traffic may be affected due to heavy rain.
- ❖ There could be localised flash floods, landslides, mudslides, landslips, water logging, inundation and flooding over low lying areas.
- ❖ Occasional reduction in visibility due to heavy rainfall.
- ❖ Surface & Helicopter services may be regulated.
- ❖ Small ships & country boats would be affected due to strong wind and heavy rain.

Action suggested:

- ❖ People are advised to keep a watch on the weather for worsening conditions and be ready to move to safer places accordingly.
- ❖ Take safe shelters; do not take shelter under trees, as there could be lightning.
- ❖ In case of expected lightning, unplug electrical/ electronic appliances, immediately, get out of water bodies and keep away from all the objects that conduct electricity.
- ❖ Tourism and recreational activities to be regulated.
- ❖ Surface transport and helicopter services to be regulated.

Next Message will be issued at 2030 hrs IST of today, the 28th October, 2025.

Kindly visit the following websites for further details.

<https://rsmcnewdelhi.imd.gov.in/> & https://dss.imd.gov.in/dwr_img/GIS/cyclone.html

**(Ananda Kumar Das)
Scientist-F, IMD, New Delhi**

Copy to: ACWC Kolkata/ACWC Chennai/ACWC Mumbai/CWC Bhubaneswar/CWC Vishakhapatnam/ CWC Thiruvananthapuram/CWC Ahmedabad; Meteorological Centres- Port Blair/Hyderabad/ Amravati/Bengaluru

Significant Rainfall (in cm) during past 24 hours ending at 0830 hrs IST of today, the 28th October 2025

SAURASHTRA & KUTCH: Sutrapada (dist Gir Somnath) 20, Diu (dist Diu) 13, Veraval (dist Gir Somnath) 13, Kodinar (dist Gir Somnath) 12, Gir Gadhada (dist Gir Somnath) 12, Khambha (dist Amreli) 12, Mahuva(b) (dist Bhavnagar) (STATE GOVT DATA) 11, Una (dist Gir Somnath) 11, Talaja (dist Bhavnagar) 11, Lilia (dist Amreli) 10, Talala (dist Gir Somnath) 9, Savarkundla (dist Amreli) 8, TALAJA_AWS400 (dist Bhavnagar) 7, Mahuva(b) (dist Bhavnagar) 7, Mendarda (dist Junagadh) 7.

GUJARAT REGION: Vadodara (dist Vadodara)(STATE GOVT DATA) 13, Vadodara (dist Vadodara) 11, Galteshwar (dist Kheda) 11, Bardoli (dist Surat) 10, Meghraj (dist Aravalli) 10, Umerpada (dist Surat) 9, Vagra (dist Bharuch) 9, Nadiad (dist Kheda) 8, Khanpur (dist Mahisagar) 7, Nandod (dist Narmada) 7, Kadana (dist Mahisagar) (STATE GOVT DATA) 7, Balasinor (dist Mahisagar) 7, Kadana (dist Mahisagar) 7, Hansot (dist Bharuch) 7, Dahod (dist Dahod) 7, Lunawada (dist Mahisagar) 7.

Coastal Andhra Pradesh & Yanam: Visakhapatnam (dist Vishakhapatnam) 19, Bheemunipatnam (dist Vishakhapatnam) 14, Visakhapatnam A/P (dist Vishakhapatnam) 14, Mandasa (dist Srikakulam) 12, Kalingapatnam (dist Srikakulam) 10, Ichchapuram (dist Srikakulam) 10, Palasa (dist Srikakulam) 10, Chodavaram (dist Anakapalli) 9, Anakapalle (dist Anakapalli) 9, Yelamanchili (dist Anakapalli) 8, Pathapatnam (dist Srikakulam) 7, Nellore (dist Spsr Nellore) 7, Vizianagaram (dist Vizianagaram) 7, Pusapatirega (dist Vizianagaram) 7, Sompeta (dist Srikakulam) 7.

Rayalaseema: Uravakonda (dist Anantapuramu) 8, Sullurpeta (dist Tirupati) 7, Tada (dist Tirupati) 7.

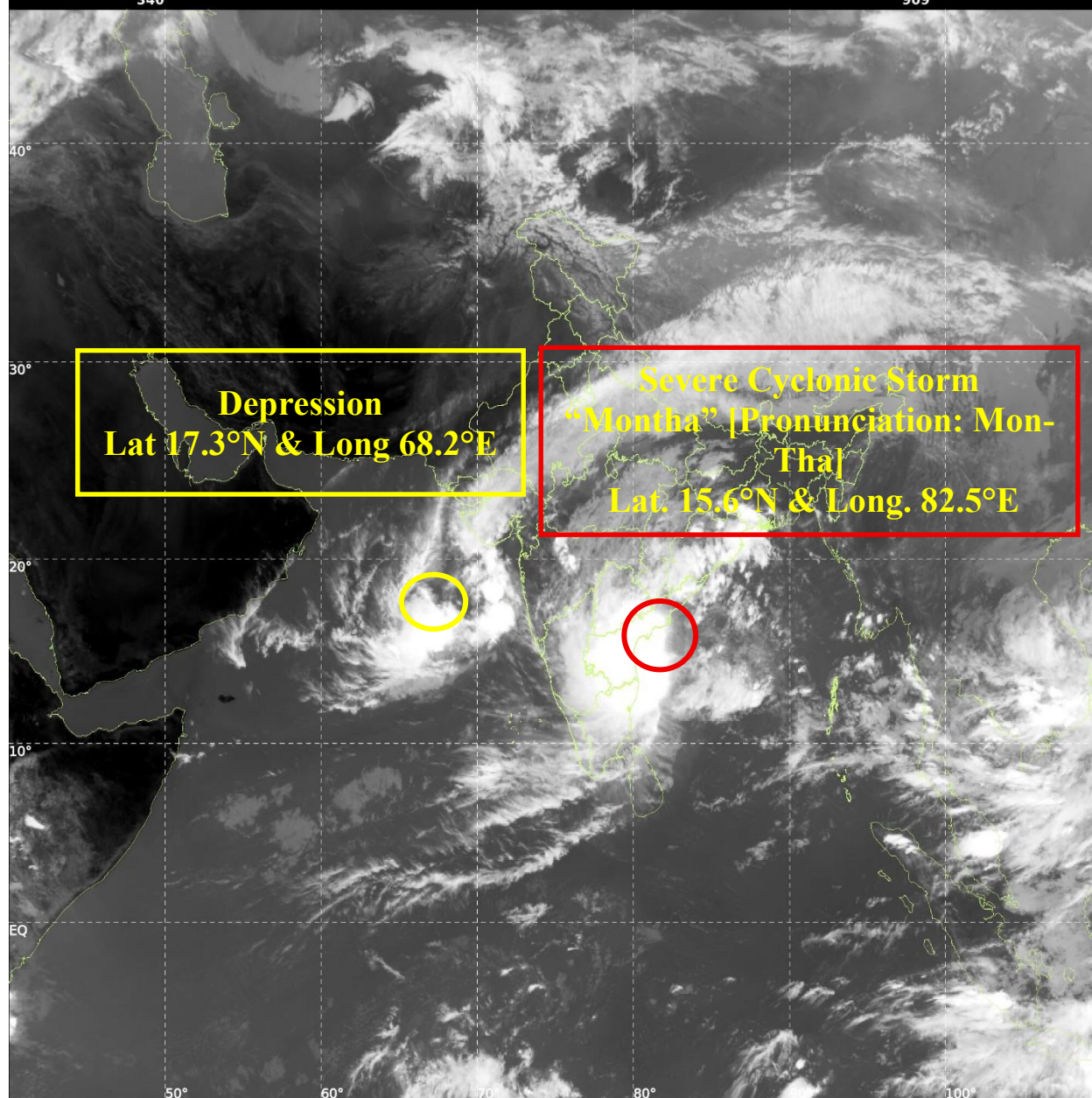
Odisha: Patrapur(Ganjam)12, Gosani(Gajapati) 12, Sankheimundi(Ganjam) 9, Paralakhemundi (Gajapati) 9, R.Udayagiri (Gajapati) 9, Kukudahandi(Ganjam) 9, Berhampur(Ganjam) 7.

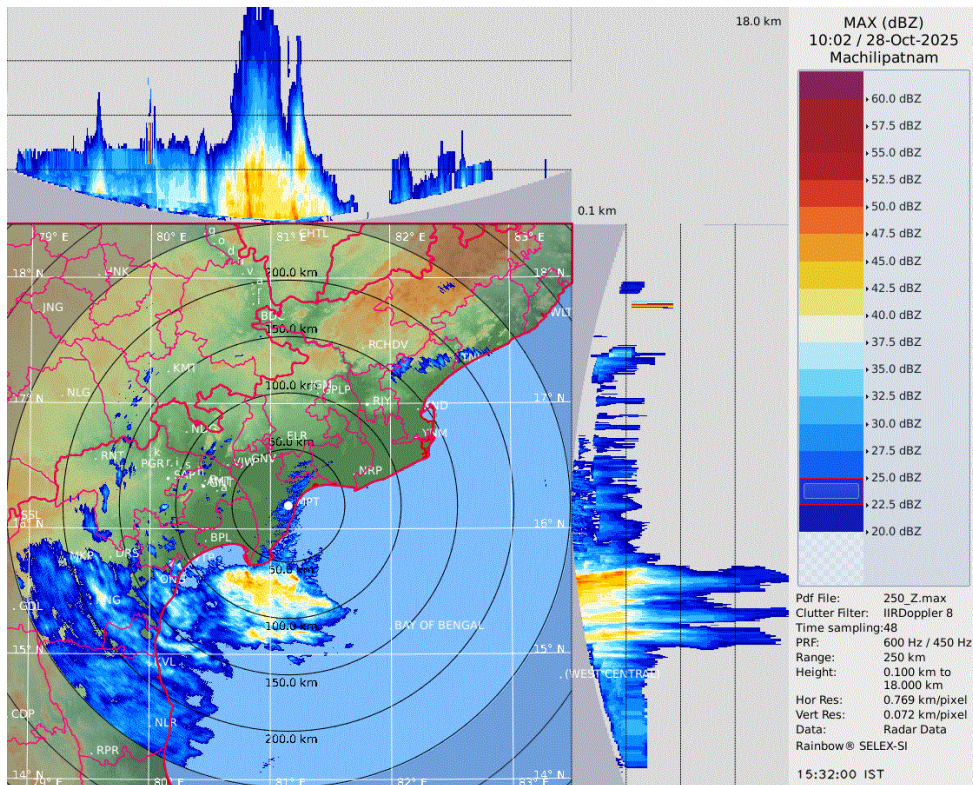


INSAT-3DS IMG, Thermal Infrared1 Count @ 10.83 μm
GMT:28-10-2025/(0930-0957) IST:28-10-2025/(1500-1527)
L1C MERCATOR (LINEAR STRETCH: 1%)

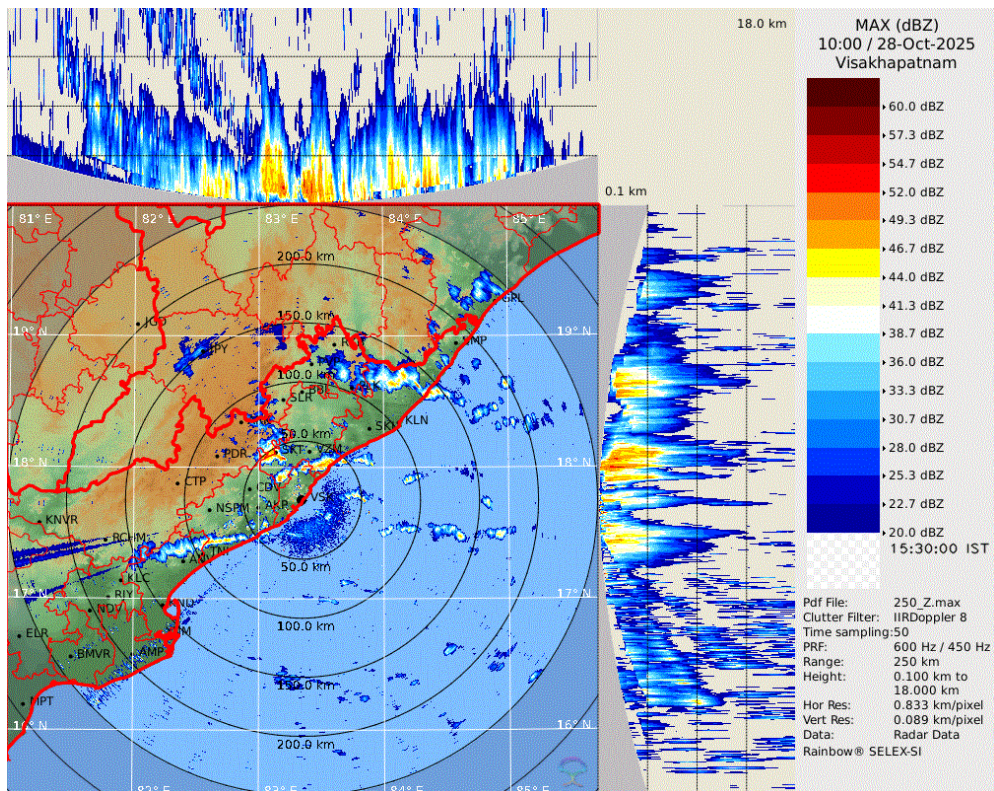
340

909





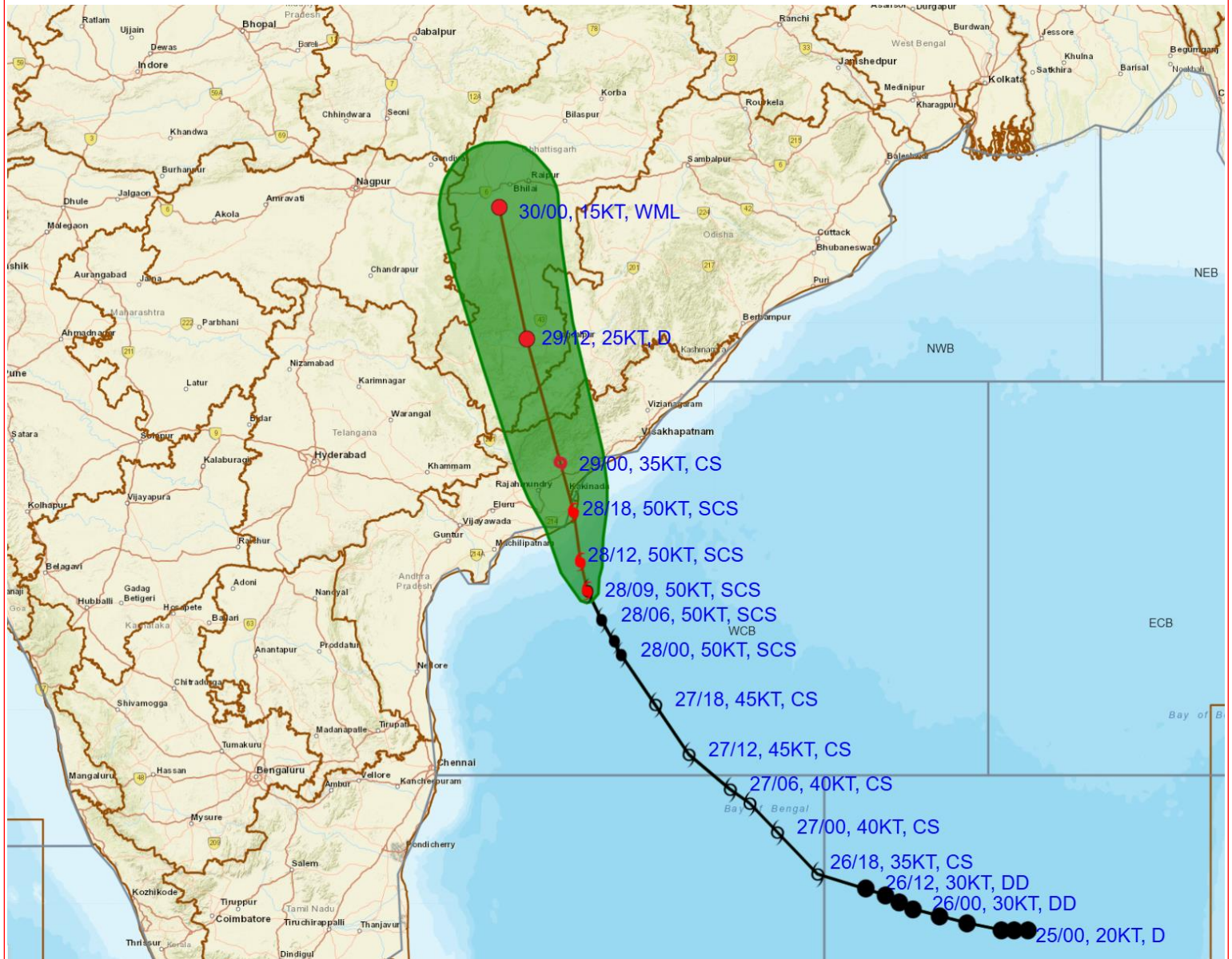
Max Z image of DWR Machilipatnam based on 0900 UTC of 28th October 2025



Max Z image of DWR Visakhapatnam based on 0700 UTC of 28th October 2025



OBSERVED AND FORECAST TRACK ALONGWITH CONE OF UNCERTAINTY OF SEVERE CYCLONIC STORM “MONTHA” OVER WESTCENTRAL BAY OF BENGAL BASED ON 0900 UTC (1430 Hrs. IST) OF 28TH OCTOBER 2025.

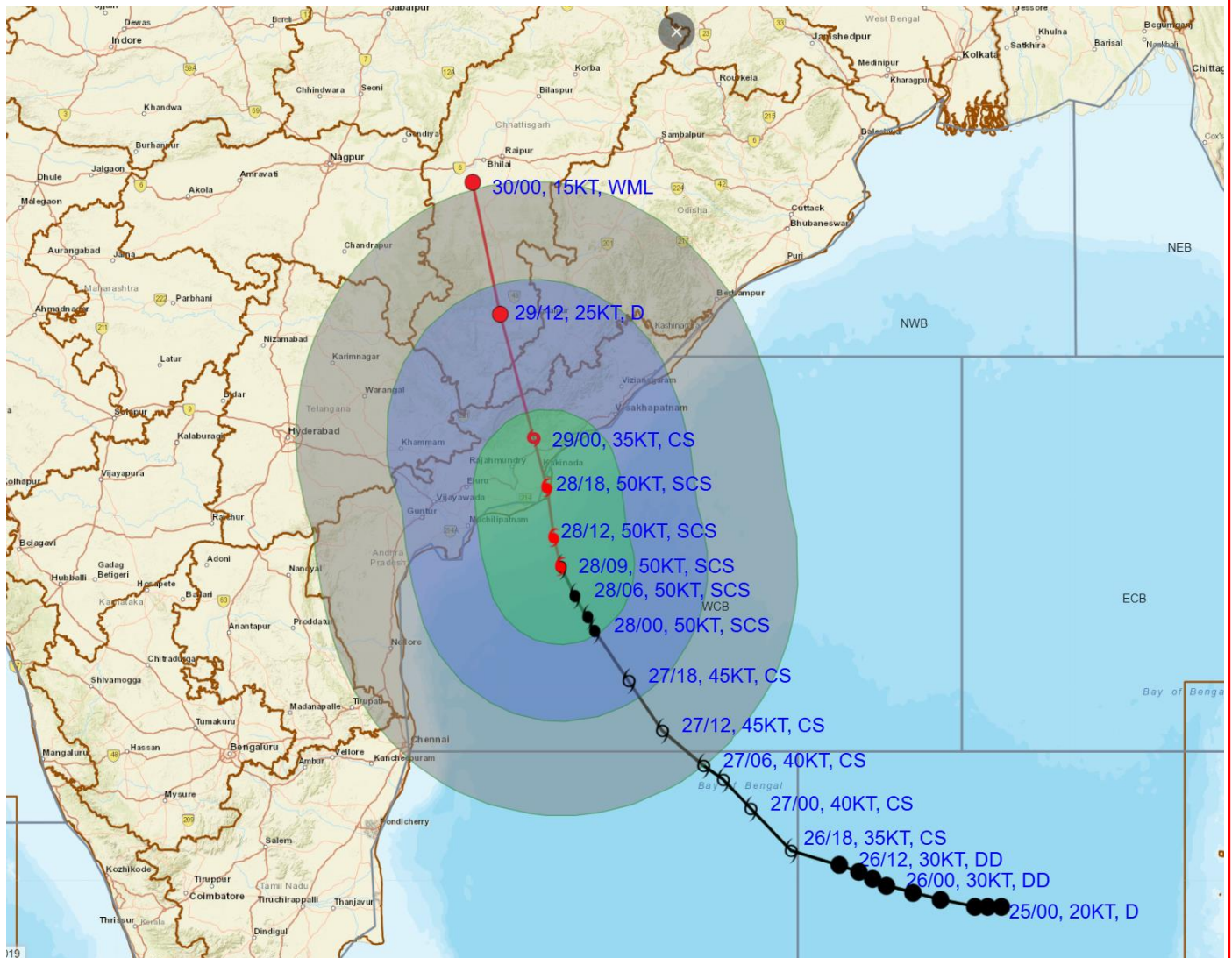


DATE/TIME IN UTC
IST=UTC + 0530
L: LOW PRESSURE AREA
WML: WELL MARKED LOW PRESSURE AREA
D: DEPRESSION (17-27 KT)
DD: DEEP DEPRESSION (28-33 KT)
CS: CYCLONIC STORM (34-47 KT)
SCS: SEVERE CYCLONIC STORM (48-63KT)
VSCS: VERY SEVERE CYCLONIC STORM (64-89 KT)
ESCS: EXTREMELY SEVERE CYCLONIC STORM (90-119 KT)
SuCS: SUPER CYCLONIC STORM (≥ 120 KT)

● LESS THAN 34 KT
⌀ 34-47 KT
⌀ ≥ 48 KT
— OBSERVED TRACK
— FORECAST TRACK
▲ CONE OF UNCERTAINTY



OBSERVED AND FORECAST TRACK ALONGWITH QUADRANT WIND DISTRIBUTION OF SEVERE CYCLONIC STORM “MONTHA” OVER WESTCENTRAL BAY OF BENGAL BASED ON 0900 UTC (1430 Hrs. IST) OF 28TH OCTOBER 2025.



DATE/TIME IN UTC

IST=UTC + 0530

L: LOW PRESSURE AREA

WML: WELL MARKED LOW PRESSURE AREA

D: DEPRESSION (17-27 KT)

DD: DEEP DEPRESSION (28-33 KT)

CS: CYCLONIC STORM (34-47 KT)

SCS: SEVERE CYCLONIC STORM (48-63KT)

VSCS: VERY SEVERE CYCLONIC STORM (64-89 KT)

ESCS: EXTREMELY SEVERE CYCLONIC STORM (90-119 KT)

SuCS: SUPER CYCLONIC STORM (≥ 120 KT)

● LESS THAN 34 KT

○ 34-47 KT

● ≥ 48 KT

— OBSERVED TRACK

— FORECAST TRACK

▲ CONE OF UNCERTAINTY

AREA OF MAXIMUM SUSTAINED WIND SPEED:

28-33 KT (52-61 KMPH)

34-49 KT (62-91 KMPH)

50-63 KT (92-117 KMPH)

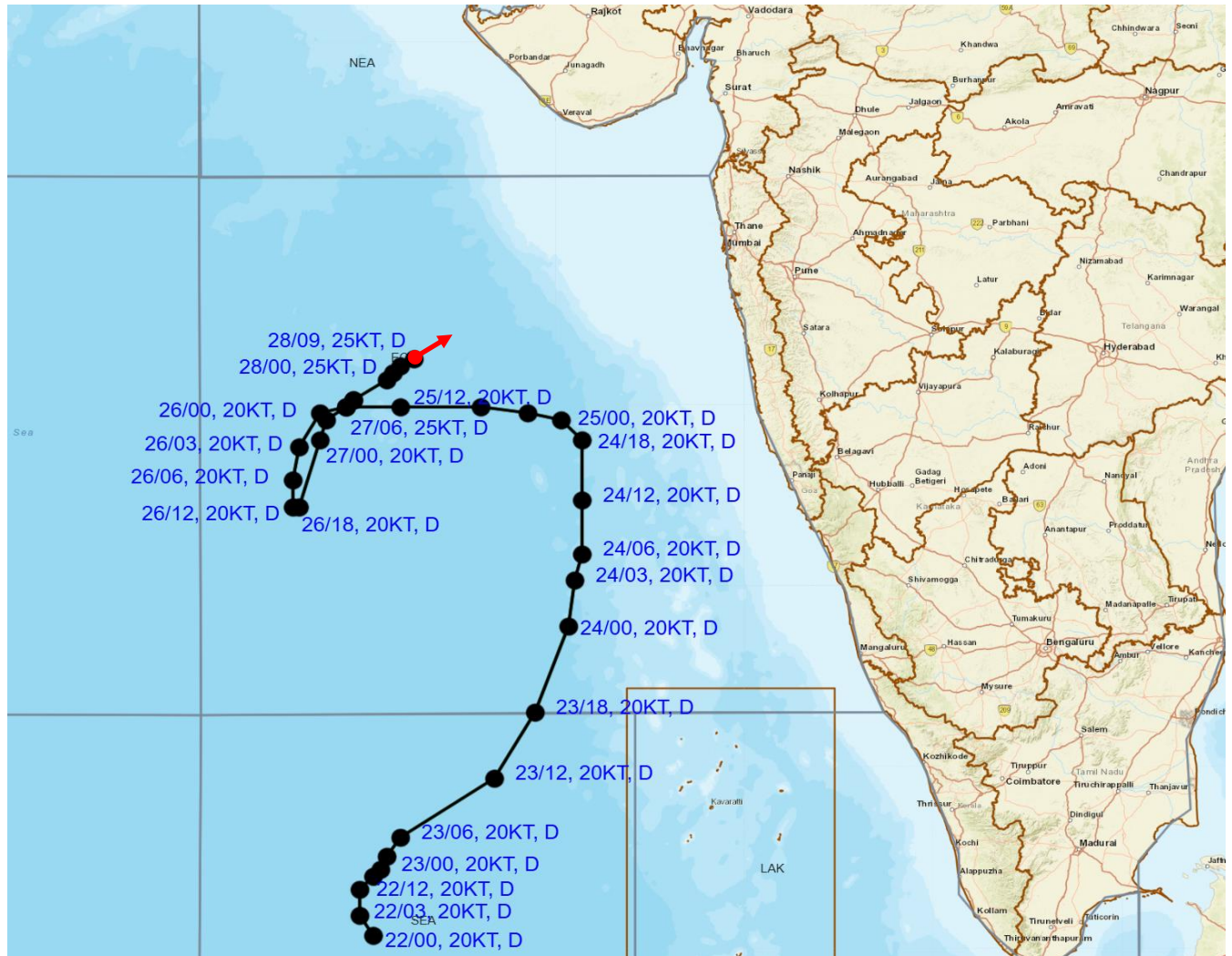
≥ 64 KT (≥118 KMPH)

IMPACT OVER THE SEA

MSW (knot/kmph)	Impact	Action
28-33 (52-61)	Very rough seas	Total suspension of fishing operations
34-49 (62-91)	High to very high seas	Total suspension of fishing operations
50-63 (92-117)	Very high seas	Total suspension of fishing operations
≥ 64 (≥118)	Phenomenal	Total suspension of fishing operations



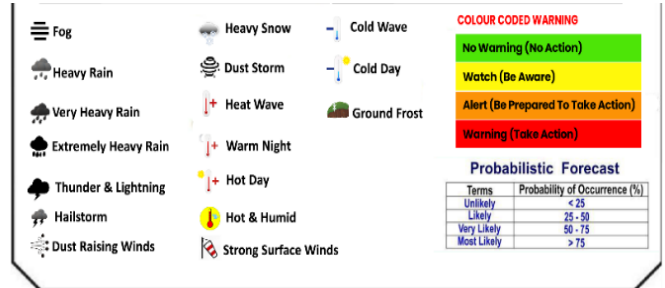
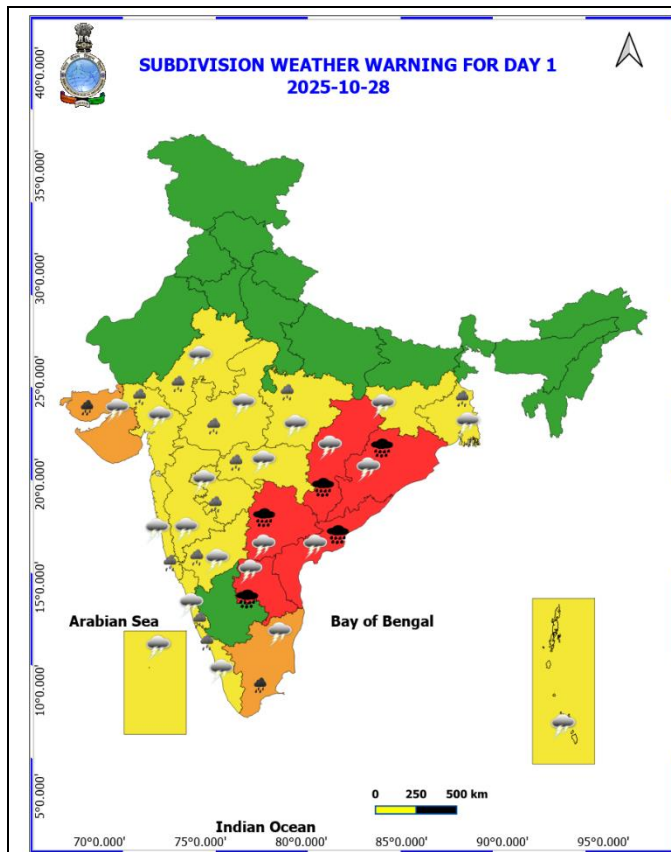
OBSERVED AND FORECAST TRACK OF THE DEPRESSION OVER EASTCENTRAL ARABIAN SEA BASED ON 0900 UTC (1430 IST) OF 28TH OCTOBER, 2025.



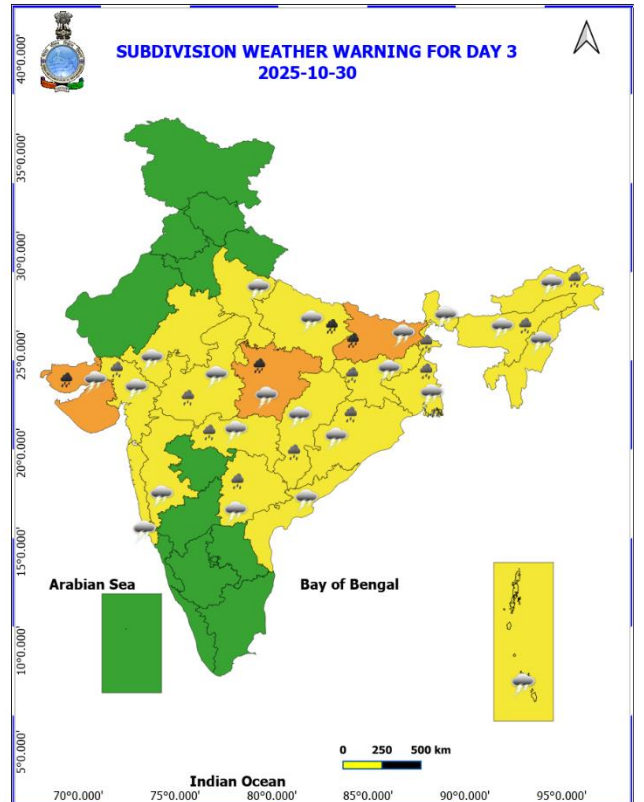
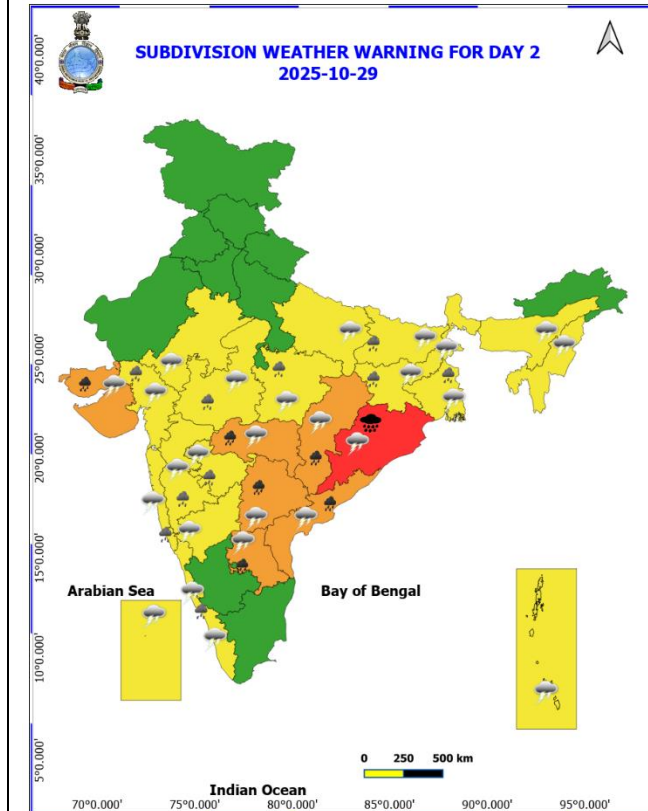
DATE/TIME IN UTC
IST=UTC + 0530
L: LOW PRESSURE AREA
WML: WELL MARKED LOW PRESSURE AREA
D: DEPRESSION (17-27 KT)
DD: DEEP DEPRESSION (28-33 KT)
CS: CYCLONIC STORM (34-47 KT)
SCS: SEVERE CYCLONIC STORM (48-63KT)
VSCS: VERY SEVERE CYCLONIC STORM (64-89 KT)
ESCS: EXTREMELY SEVERE CYCLONIC STORM (90-119 KT)
SuCS: SUPER CYCLONIC STORM (≥ 120 KT)

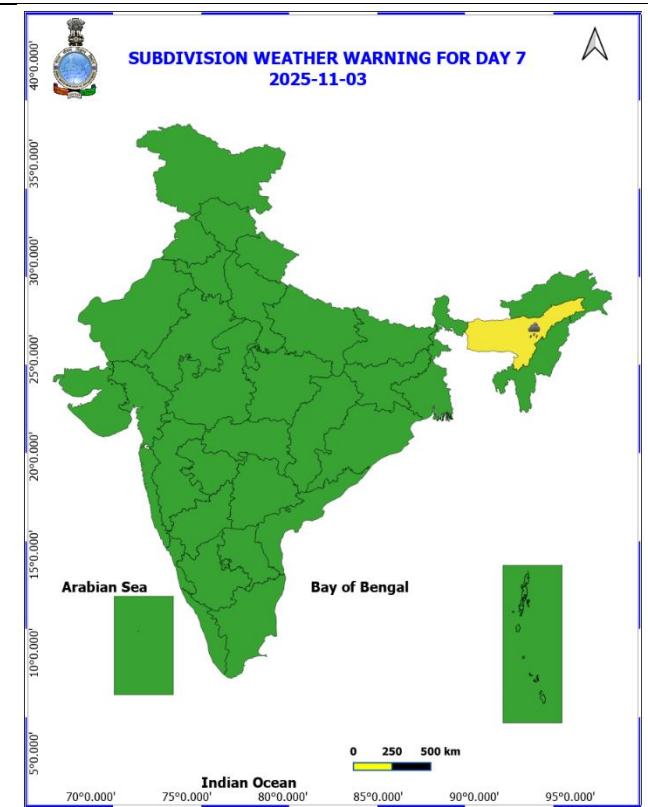
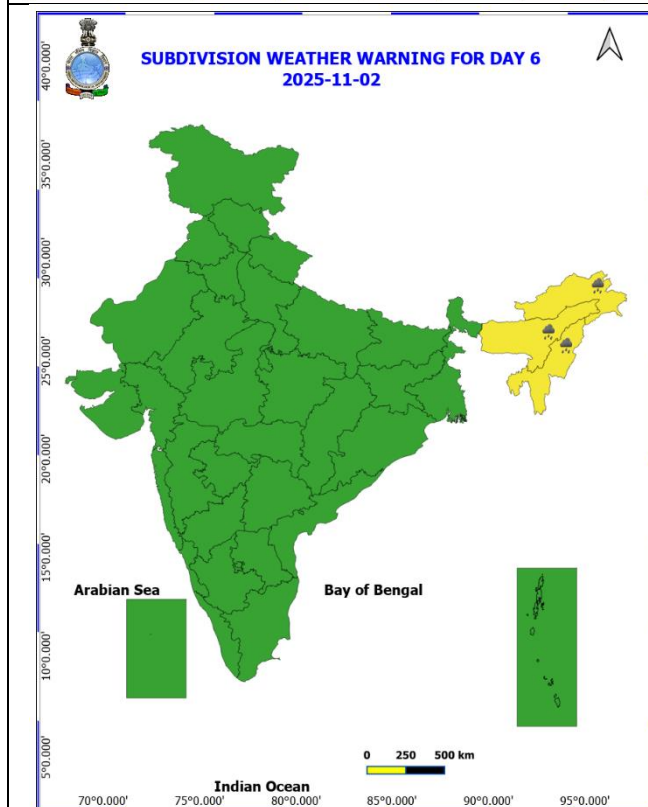
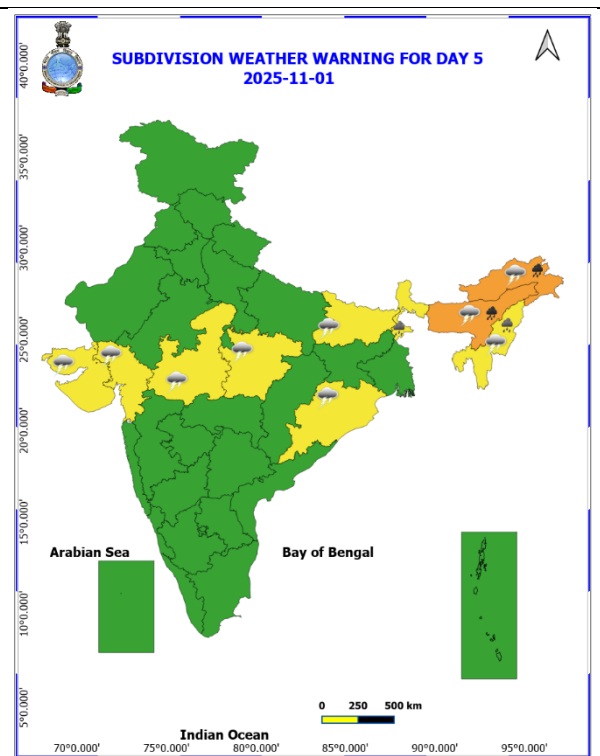
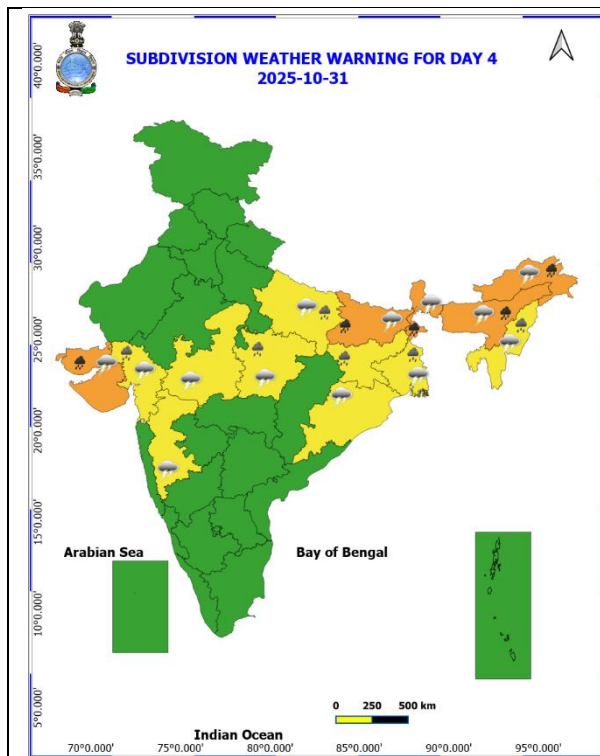
- LESS THAN 34 KT
- 34-47 KT
- ≥ 48 KT
- OBSERVED TRACK
- FORECAST TRACK
- ▲ CONE OF UNCERTAINTY

Weather Warning Graphics

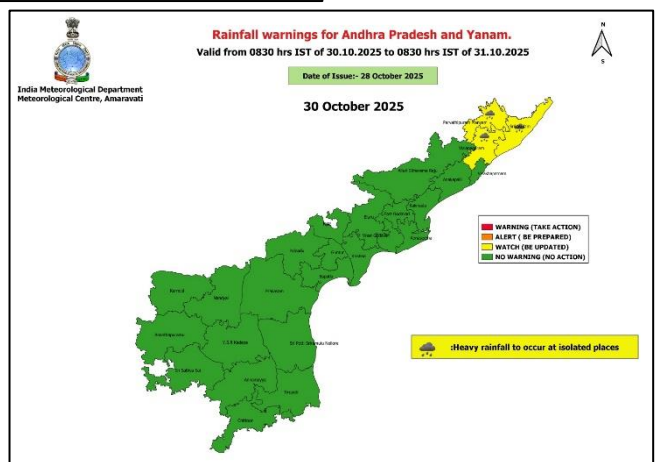
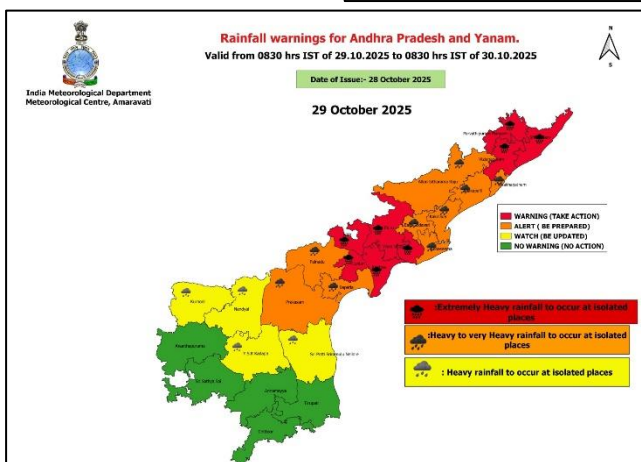
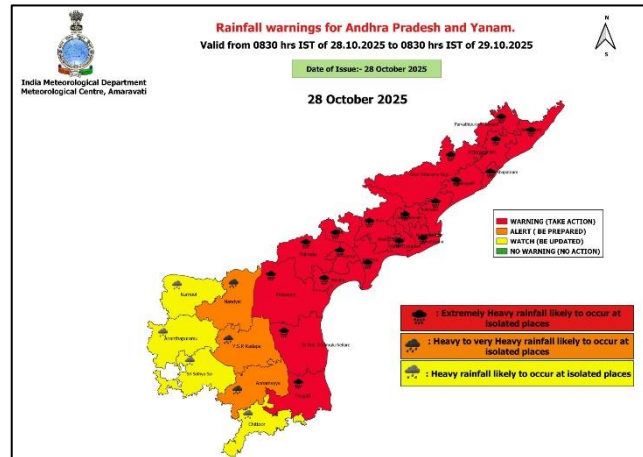


* Red colour warning does not mean "Red Alert", Red colour warning means "Take Action".
Forecast and Warning for any day is valid from 0830 hours IST of day till 0830 hours IST of next day.
For more details, kindly visit <https://moustan.ind.gov.in> or contact: 011-2434-4599
(Service to the Nation since 1875)

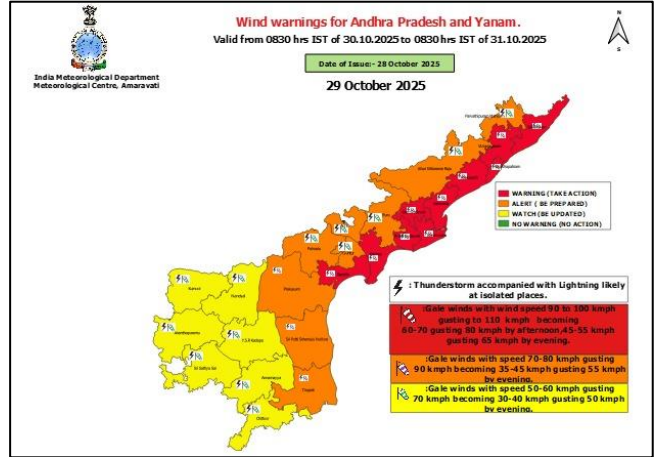
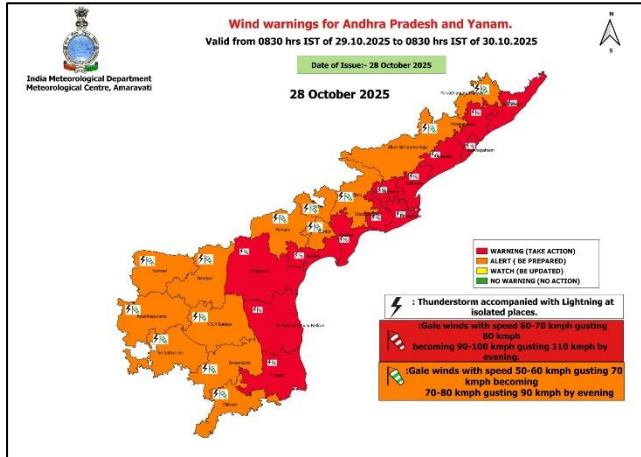




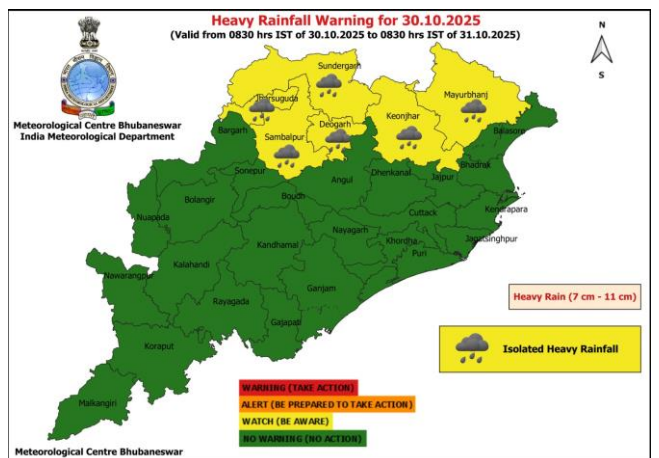
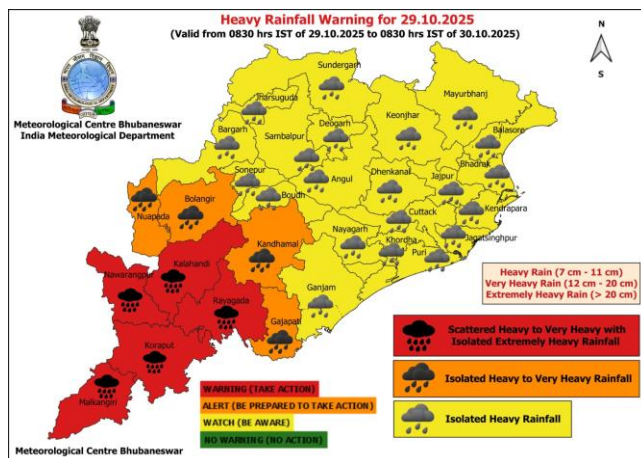
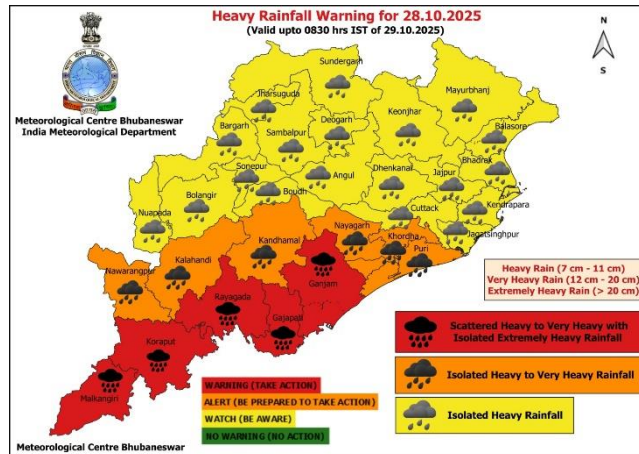
District Wise Heavy Rainfall Warnings for Andhra Pradesh



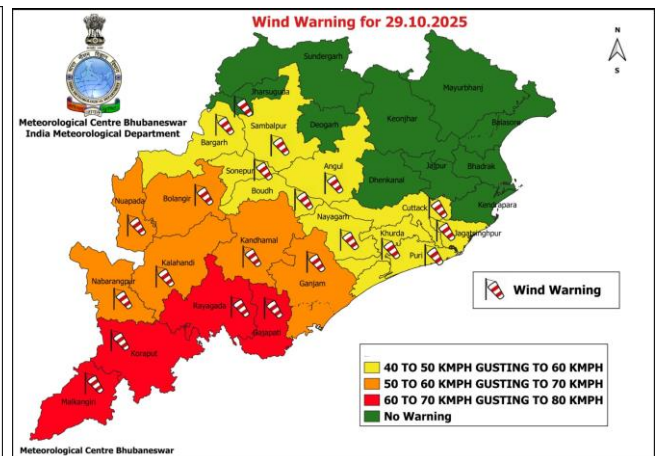
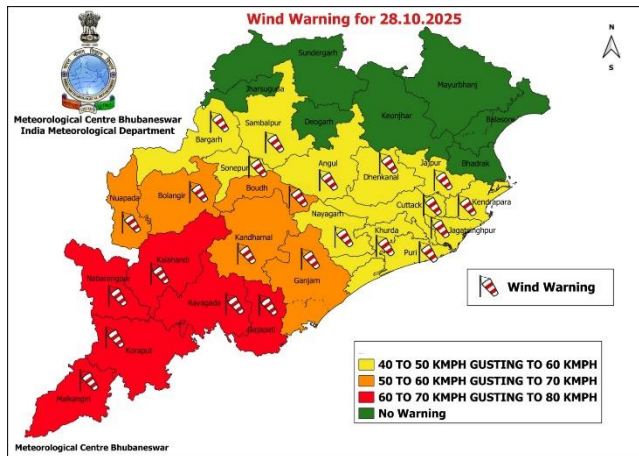
District-wise Wind Warnings for Andhra Pradesh



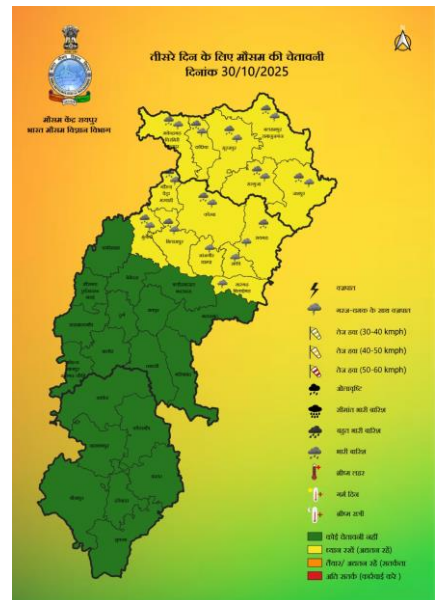
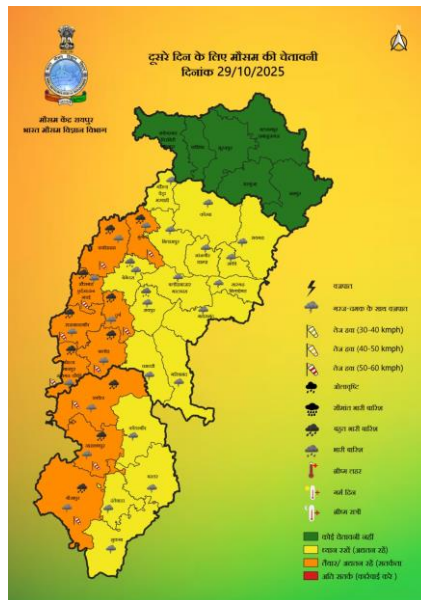
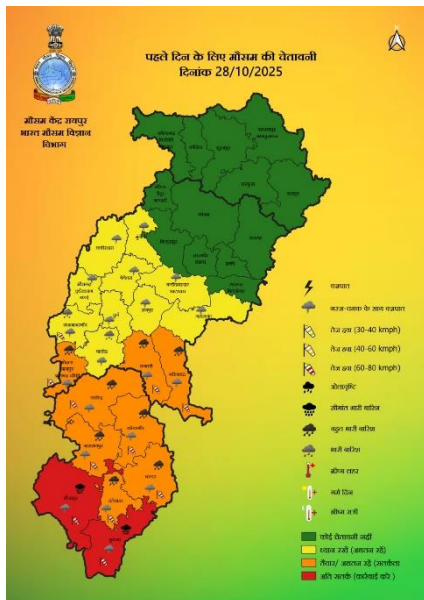
District-wise Heavy Rainfall Warnings for Odisha



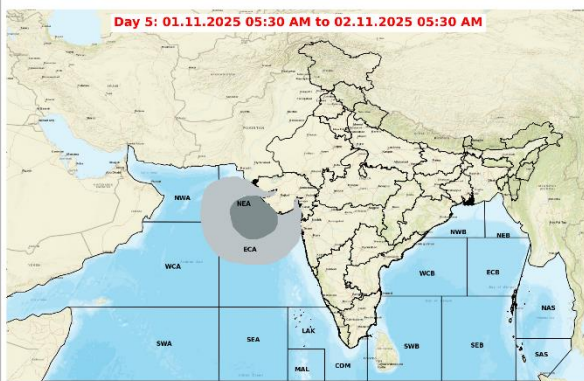
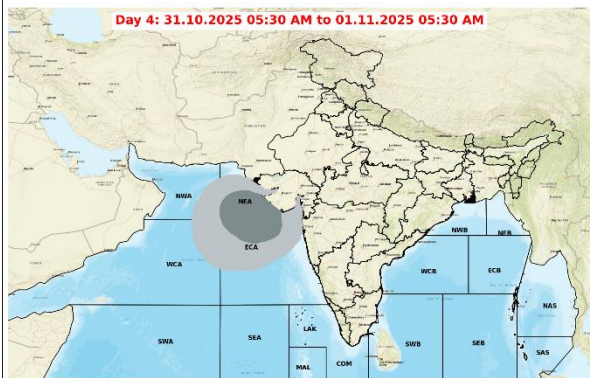
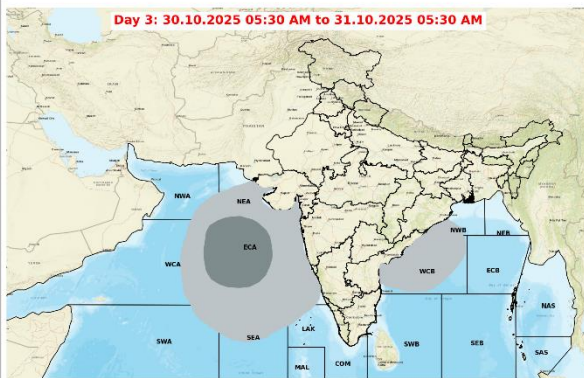
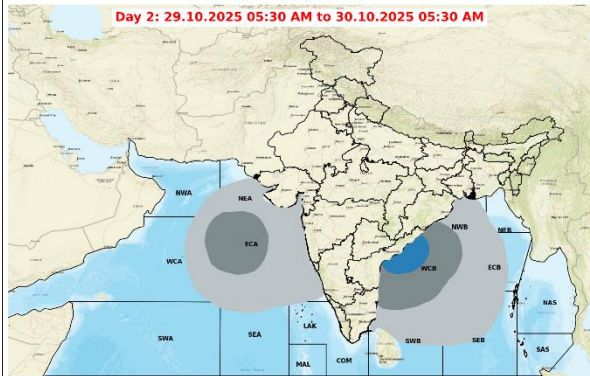
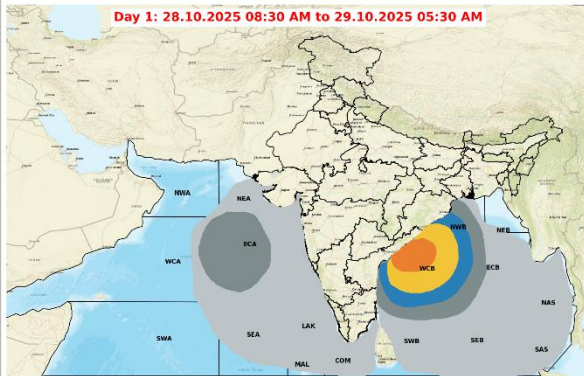
District-wise Wind Warnings for Odisha



District-wise Weather Warnings for Chattisgarh



Fishermen Warning Graphics



Legend

Squally Weather with wind speed 35-45 kmph gusting to 55 kmph	Squally wind with speed 55-65 kmph gusting to 75 kmph
Squally Weather with wind speed 40-50 kmph gusting to 60 kmph	CS with Gale winds with speed 60-80 kmph gusting to 90 kmph
Squally Weather with wind speed 45-55 kmph gusting to 65 kmph	SCS with Gale wind speed 90-110 kmph gusting to 120 kmph
Squally wind with speed 45-55 kmph gusting to 65 kmph	VSCS with Gale wind speed 120-165 kmph gusting to 185 kmph
Squally wind with speed 50-60 kmph gusting to 70 kmph	ESCS with Gale wind speed 165-220 kmph gusting to 245 kmph

Fishermen are advised not to venture into the marked areas.

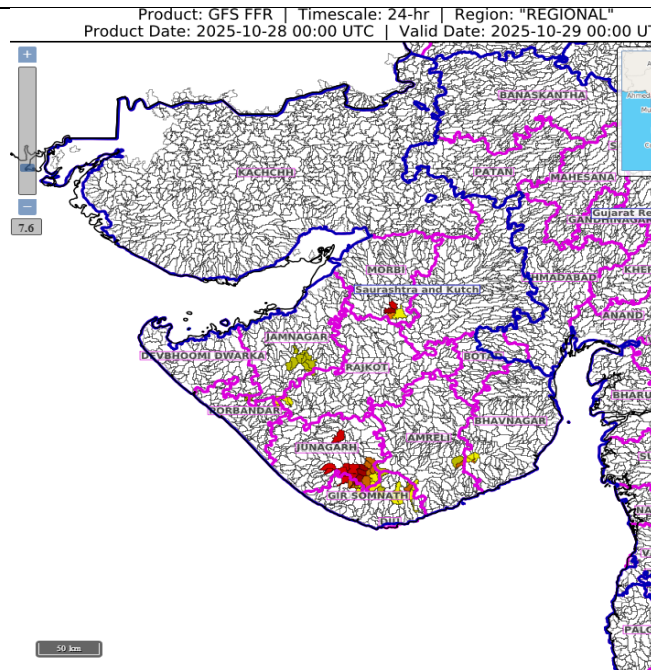
24 hours Outlook for the Flash Flood Risk (FFR) till 0530 IST of tomorrow, the 29th October

24 hours Outlook for the Flash Flood Risk (FFR) till 0530 IST of 29-10-2025 :

Low to Moderate flash flood risk likely over few watersheds & neighbourhoods of following Met Sub-divisions during next 24 hours.

Saurashtra & Kutch - Amreli, Junagarh, Jamnagar, Morbi, Gir Somnath and Rajkot districts.

Surface runoff/ Inundation may occur at some fully saturated soils & low-lying areas over Area of Concern (AoC) as shown in map due to expected rainfall occurrence in next 24 hours.



24 hours Outlook for the Flash Flood Risk (FFR) till 0530 IST of 29-10-2025 :

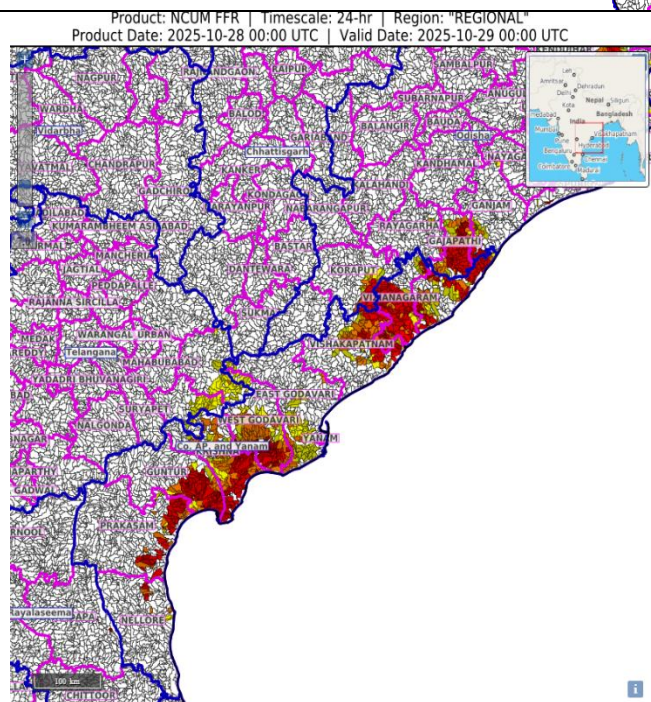
Moderate to High flash flood risk likely over few watersheds & neighbourhoods of following Met Sub-divisions during next 24 hours.

Coastal Andhra Pradesh & Yanam - Guntur, Krishna, West Godavari, East Godavari, Prakasam, Nellore, SriKakulam Vishakhapatnam and Vizianagaram districts.

Telangana – Bhadrachalam Kothagudem and Khammam districts.

Odisha – Gajapati and Ganjam districts.

Surface runoff/ Inundation may occur at some fully saturated soils & low-lying areas over Area of Concern (AoC) as shown in map due to expected rainfall occurrence in next 24 hours.



Flash Flood Risk

■	High Risk (Take Action)
■	Moderate Risk (Be Prepared)
■	Low Risk (Be Updated)

STORM SURGE HEIGHT INFORMATION:

* The below listed surge heights are over and above astronomical tide.

MANDAL/TALUK	DISTRICT	STATE / UNION TERRITORY	NEAREST PLACE OF HABITATION	STORM SURGE (m) *	EXPECTED INUNDATION EXTENT (km)
Kakinada	East Godavari	Andhra Pradesh	Polekurru	0.3-0.7	Upto 0.12
Pithapuram	East Godavari	Andhra Pradesh	Ponnada	0.4-0.5	Upto 0.20
Tuni	East Godavari	Andhra Pradesh	Kona Forest	0.4-0.5	Nil
Yanam	Yanam	Puducherry	Yanam	0.5-0.8	Upto 0.16
Yellamanchili	Visakhapatnam	Andhra Pradesh	Rajala Agraharam	0.2-0.5	Upto 0.16

