



**India Meteorological Department  
(Ministry of Earth Sciences)  
NATIONAL BULLETIN NO. 2 (Land/04/2025)**

**TIME OF ISSUE: 0930 HOURS IST**

**DATED: 07.09.2025**

**FROM: INDIA METEOROLOGICAL DEPARTMENT**

**(FAX NO. 24643965/24699216/24623220)**

**TO: CONTROL ROOM, NDM, MINISTRY OF HOME AFFAIRS (FAX.NO. 23093750)  
CONTROL ROOM NDMA (FAX.NO. 26701729)  
CABINET SECRETARIAT (FAX.NO.23012284, 23018638)  
PS TO HON'BLE MINISTER FOR S & T AND EARTH SCIENCES (FAX NO.23316745)  
SECRETARY, MOES (FAX NO. 24629777)  
H.Q. (INTEGRATED DEFENCE STAFF AND CDS) (FAX NO. 23005137/23005147)  
DIRECTOR GENERAL, DOORDARSHAN (23385843)  
DIRECTOR GENERAL, AIR (23421105, 23421219)  
PIB MOES (FAX NO. 23389042)  
UNI (FAX NO. 23355841)  
D.G. NATIONAL DISASTER RESPONSE FORCE (NDRF) (FAX NO. 26105912, 2436 3260)  
DIRECTOR, PUNCTUALITY, INDIAN RAILWAYS (FAX NO. 23388503)  
CHIEF SECRETARY, GOVT. OF RAJASTHAN (FAX NO. 0141-2227114)  
CHIEF SECRETARY, GOVT. OF GUJARAT (FAX NO. +9179 23250305)  
CHIEF SECRETARY, GOVT. OF MAHARASHTRA (FAX NO. +9122 22028594)**

**Subject: Depression over North Gujarat and adjoining Southwest Rajasthan**

The depression over Southwest Rajasthan and neighbourhood moved south-southwestwards with the speed of 15 kmph during past 6 hours and lay centred at 0530 hrs IST of today, the 07<sup>th</sup> September, 2025, over North Gujarat and adjoining Southwest Rajasthan near latitude 24.2°N and longitude 72.2°E, close to Deesa (Gujarat), 70 Km northeast of Radhanpur (Gujarat) and 270 km east-northeast of Bhuj (Gujarat).

It is very likely to move west-southwestwards during next 2 days.

**Warnings:**

**(i) Rainfall Warning:**

**Gujarat Region:** Light to moderate rainfall at most places with **heavy to very heavy rainfall and extremely heavy falls ( $\geq 21$  cm)** very likely at isolated places on 07<sup>th</sup> September and heavy rainfall on 08<sup>th</sup> September.

**Saurashtra & Kutch:** Light to moderate rainfall at most places with **heavy to very heavy rainfall and extremely heavy falls ( $\geq 21$  cm)** very likely at isolated places on 07<sup>th</sup> September **very heavy rainfall** on 08<sup>th</sup> September.

**West Rajasthan:** Light to moderate rainfall at most places with **heavy to very heavy rainfall and extremely heavy falls ( $\geq 21$  cm)** very likely at isolated places over southwest Rajasthan on 07<sup>th</sup> September and **very heavy rainfall** on 08<sup>th</sup> September.

**East Rajasthan:** Light to moderate rainfall at most places with **heavy to very heavy rainfall** very likely at isolated places over southeast Rajasthan on 07<sup>th</sup> September and heavy rainfall on 08<sup>th</sup> September.

**Coastal Maharashtra:** Light to moderate rainfall at most places with **heavy to very heavy rainfall** very likely at isolated places on 07<sup>th</sup> September.

**Madhya Maharashtra:** Light to moderate rainfall at most places with **heavy to very heavy rainfall** very likely at isolated places on 07<sup>th</sup> September.

**(ii) Wind Warnings:**

- ❖ Squally wind speed reaching 40-50 kmph gusting to 60 kmph is likely over southwest Rajasthan and Gujarat state during next 2 days and decrease thereafter.
- ❖ Squally weather with wind speed reaching 45-55 kmph gusting to 65 kmph is likely to prevail over eastcentral & adjoining northeast Arabian Sea and along & off Gujarat and North Konkan coasts till 9<sup>th</sup> September 2025 and decrease thereafter.

**(iii) Sea condition:** Sea condition is likely to be rough to very rough over northeast and adjoining eastcentral Arabian Sea and along & off Gujarat and North Konkan coasts till 9<sup>th</sup> September 2025.

**(iv) Warning:**

- ❖ Fishermen are advised not to venture into northeast and adjoining eastcentral Arabian Sea and along & off Gujarat and Konkan coasts till 9<sup>th</sup> September 2025.
- ❖ Small ships/shipping activities are to be monitored and regulated till 9<sup>th</sup> September 2025.
- ❖ Judicious regulation of tourism and recreational activities.

**(iv) Impact Expected and Action Suggested due to very heavy/extremely heavy rainfall and squally winds over south Rajasthan and Gujarat state**

**Impact expected:**

- ❖ Heavy rainfall may damage plantation, horticulture and standing crops.
- ❖ Partial damage to vulnerable structures due to heavy rain.
- ❖ Minor damage to kutcha houses/walls, huts and roads due to heavy rain.
- ❖ Road and rail traffic may be affected due to heavy rain.
- ❖ There could be localised landslides, mudslides, landslips, water logging, inundation and flooding over low lying areas.
- ❖ Occasional reduction in visibility due to heavy rainfall.
- ❖ Helicopter services may get affected.

**Action suggested:**

- ❖ People are advised to keep a watch on the weather for worsening conditions and be ready to move to safer places accordingly.
- ❖ Take safe shelters; do not take shelter under trees, as there could be lightning.
- ❖ In case of expected lightning, unplug electrical/ electronic appliances, immediately, get out of water bodies and keep away from all the objects that conduct electricity.
- ❖ Tourism and recreational activities to be regulated.
- ❖ Helicopter services to be regulated.

**Next bulletin will be issued at 1230 hrs IST of today, the 07<sup>th</sup> September, 2025.**

**(DR Pattanaik)**

**Scientist-G, IMD, New Delhi**

*Copy to: Regional Meteorological Centres- Mumbai, Meteorological Centres Ahmedabad, Jaipur.*



**OBSERVED AND FORECAST TRACK OF DEPRESSION OVER NORTH GUJARAT  
AND ADJOINING SOUTH WEST RAJASTHAN BASED ON 0000 UTC (0530 IST)  
OF 07<sup>th</sup> SEP, 2025.**



DATE/TIME IN UTC  
IST=UTC + 0530  
L: LOW PRESSURE AREA  
WML: WELL MARKED LOW PRESSURE AREA  
D: DEPRESSION (17-27 KT)  
DD: DEEP DEPRESSION (28-33 KT)  
CS: CYCLONIC STORM (34-47 KT)  
SCS: SEVERE CYCLONIC STORM (48-63 KT)  
VSCS: VERY SEVERE CYCLONIC STORM (64-89 KT)  
ESCS: EXTREMELY SEVERE CYCLONIC STORM (90-119 KT)  
SuCS: SUPER CYCLONIC STORM ( $\geq 120$  KT)

● LESS THAN 34 KT  
⬮ 34-47 KT  
⬮  $\geq 48$  KT  
— OBSERVED TRACK  
— FORECAST TRACK  
▲ CONE OF UNCERTAINTY

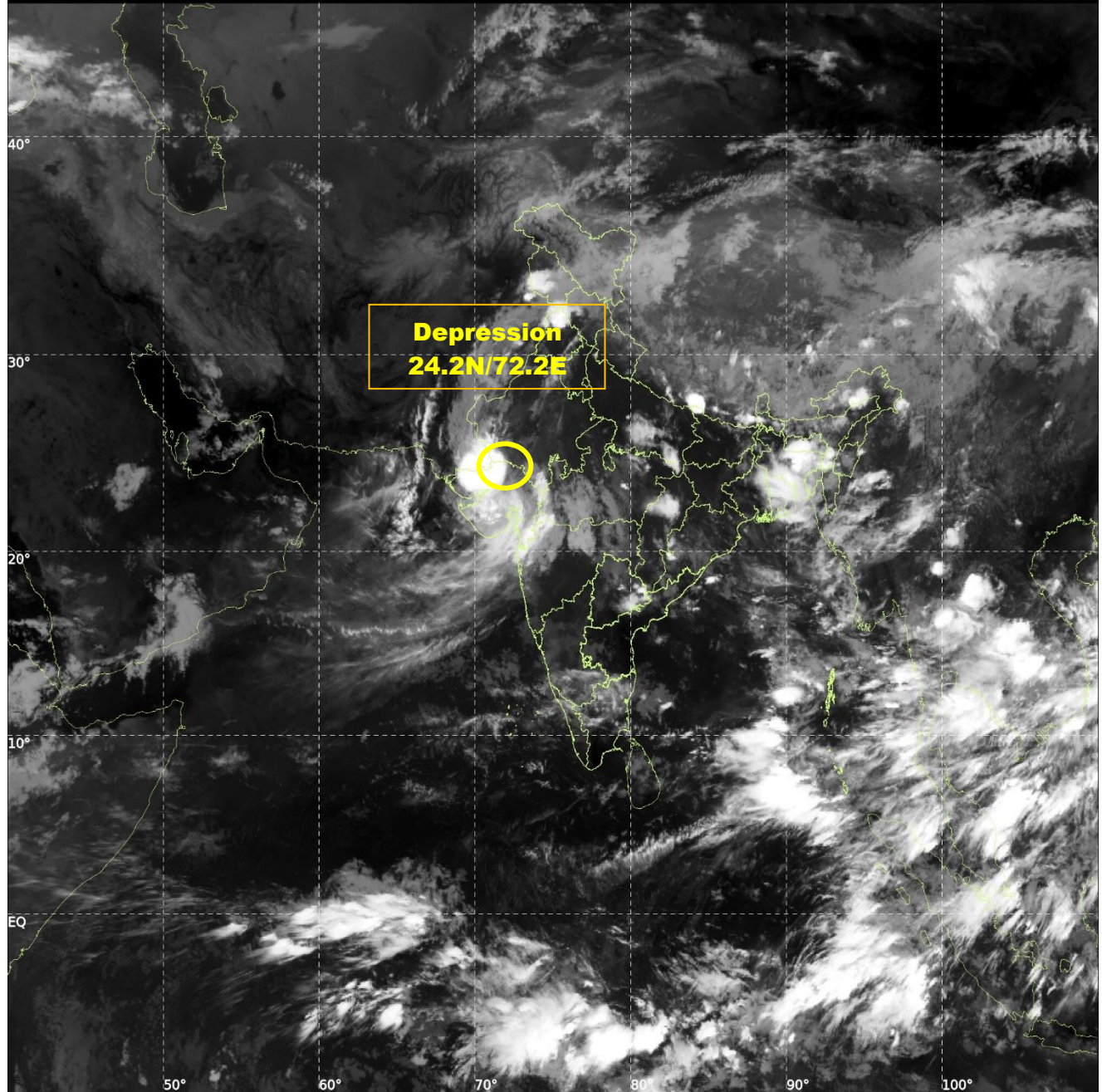




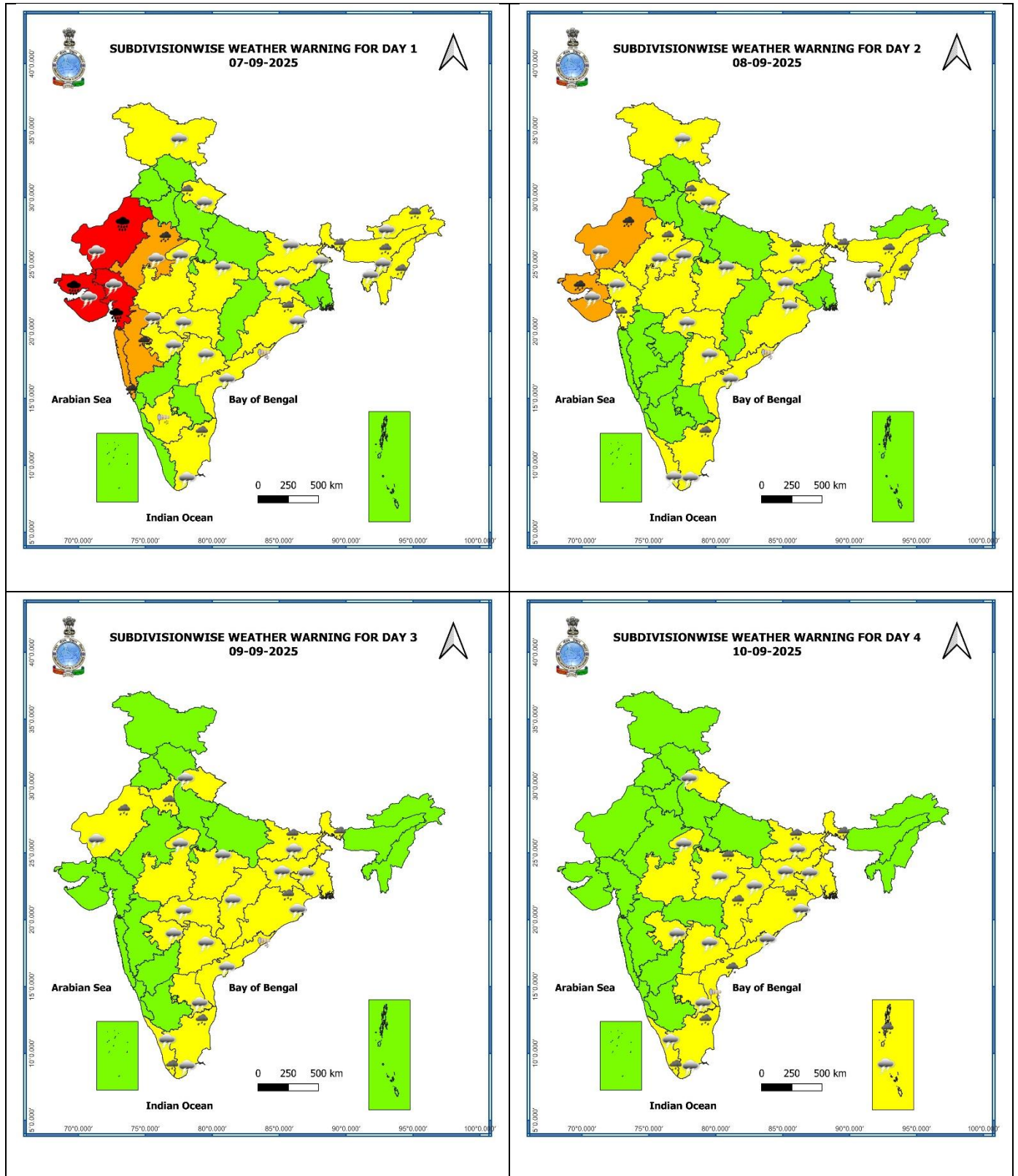
INSAT-3DS IMG, Thermal Infrared1 Count @ 10.83  $\mu\text{m}$   
GMT:07-09-2025/(0200-0227) IST:07-09-2025/(0730-0757)  
L1C MERCATOR (LINEAR STRETCH: 1%)

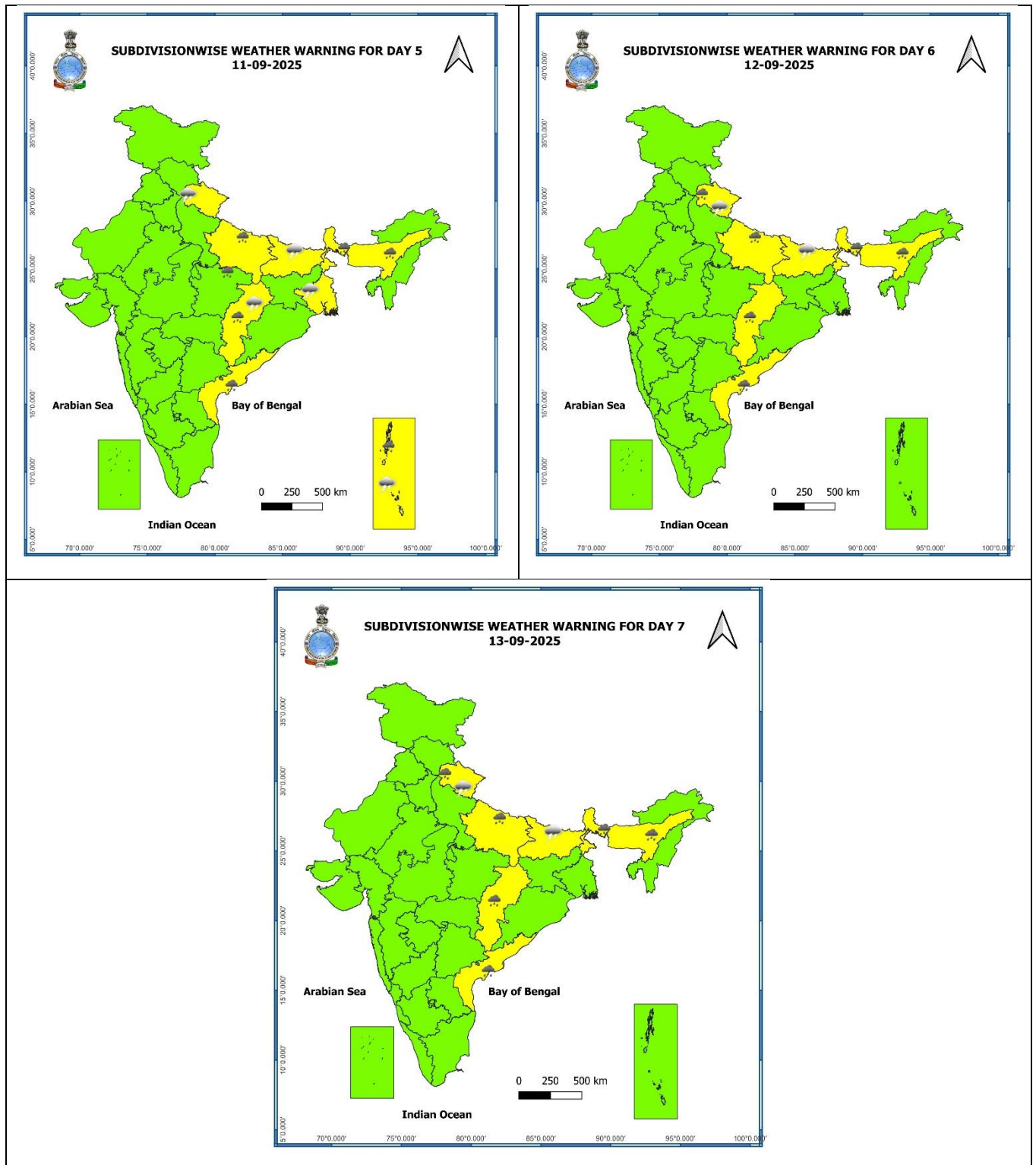
487

903



## Warning Graphics

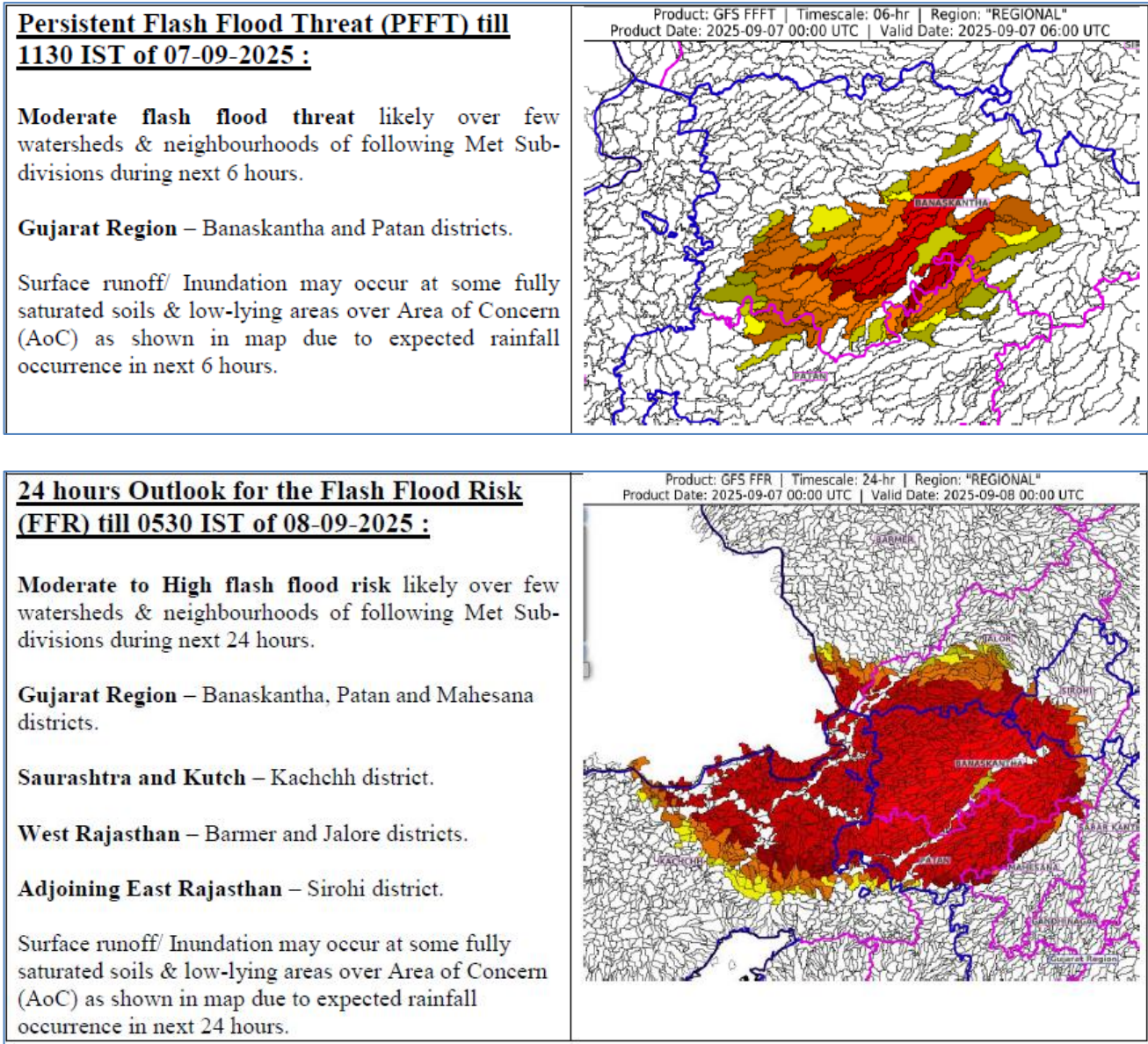




- Action may be taken based on **ORANGE** AND **RED** COLOUR warnings.
- Vulnerable regions likely urban and hilly areas action may be initiated for heavy rainfall warning.
- As the lead period increases forecast accuracy decreases.



Flash Flood Guidance



Flash Flood Threat	Flash Flood Risk
<div></div> High Threat (Take Action)	<div></div> High Risk (Take Action)
<div></div> Moderate threat (Be Prepared)	<div></div> Moderate Risk (Be Prepared)
<div></div> Low Threat (Be Updated)	<div></div> Low Risk (Be Updated)