



**India Meteorological Department
(Ministry of Earth Sciences)**

NATIONAL BULLETIN NO. 7 (Land/04/2025)

TIME OF ISSUE: 0920 HOURS IST

DATED: 08.09.2025

FROM: INDIA METEOROLOGICAL DEPARTMENT (FAX NO. 24643965/24699216/24623220)

TO: CONTROL ROOM, NDM, MINISTRY OF HOME AFFAIRS (FAX.NO. 23093750)

CONTROL ROOM NDMA (FAX.NO. 26701729)

CABINET SECRETARIAT (FAX.NO.23012284, 23018638)

PS TO HON'BLE MINISTER FOR S & T AND EARTH SCIENCES (FAX NO.23316745)

SECRETARY, MOES (FAX NO. 24629777)

H.Q. (INTEGRATED DEFENCE STAFF AND CDS) (FAX NO. 23005137/23005147)

DIRECTOR GENERAL, DOORDARSHAN (23385843)

DIRECTOR GENERAL, AIR (23421105, 23421219)

PIB MOES (FAX NO. 23389042)

UNI (FAX NO. 23355841)

D.G. NATIONAL DISASTER RESPONSE FORCE (NDRF) (FAX NO. 26105912, 2436 3260)

DIRECTOR, PUNCTUALITY, INDIAN RAILWAYS (FAX NO. 23388503)

CHIEF SECRETARY, GOVT. OF RAJASTHAN (FAX NO. 0141-2227114)

CHIEF SECRETARY, GOVT. OF GUJARAT (FAX NO. +9179 23250305)

CHIEF SECRETARY, GOVT. OF MAHARASHTRA (FAX NO. +9122 22028594)

CHIEF SECRETARY, DAMAN & DIU (FAX NO. 0260-2230775)

CHIEF SECRETARY, DADRA & NAGAR HAVELI (FAX NO. 0260-2645466)

CHIEF SECRETARY, GOA (FAX NO. 0832-2415201)

Subject: Deep Depression over southeast Pakistan and adjoining Rajasthan and Kutch

The deep depression over North Gujarat and adjoining Southwest Rajasthan moved slowly west-northwestwards with the speed of 8 kmph during past 6 hours and lay centred at 0530 hrs IST of today, the 08th September, 2025, over the Southeast Pakistan and adjoining Rajasthan & Kutch, near latitude 24.8°N and longitude 70.5°E, about 120 km southeast of Chhor (Pakistan), 150 Km northwest of Radhanpur (Gujarat), 150 km southwest of Barmer (Rajasthan), 180 km west-northwest of Jaisalmer (Rajasthan), and 180 km north-northeast of Bhuj (Gujarat).

It is very likely to move nearly northwestwards as a deep depression across southeast Pakistan and adjoining Rajasthan till 8th afternoon. Thereafter, it is likely to move nearly westwards and weaken gradually into a depression.

Warnings:

(i) Rainfall Warning:

North Gujarat Region and Saurashtra & Kutch: Light to moderate rainfall at most places with **heavy to very heavy rainfall (7-20 cm) at a few places and extremely heavy falls (≥21 cm)** at isolated places is very likely on 8th and heavy rainfall at isolated places on 9th September.

South Gujarat Region: Light to moderate rainfall at most places with **heavy to very heavy rainfall** at isolated places is very likely on 8th and heavy rainfall at isolated places on 9th September.

West Rajasthan: Light to moderate rainfall at most places with **heavy to very heavy rainfall at a few places and extremely heavy falls (≥21 cm)** at isolated places is very likely over southwest Rajasthan on 08th September.

East Rajasthan: Light to moderate rainfall at most places with **heavy rainfall** at isolated places is very likely over southeast Rajasthan on 08th September.

(ii) Wind Warnings:

- Squally weather with wind speed reaching 50-60 kmph gusting to 70 kmph is likely to prevail over northeast & adjoining eastcentral Arabian Sea and along & off Gujarat and North Konkan coasts till 9th September 2025 and decrease thereafter.
- Squally wind speed reaching 45-55 kmph gusting to 65 kmph is likely over southwest Rajasthan and Gujarat state on 8th September and decrease thereafter.

(iii) Sea condition: Sea condition is likely to be rough to very rough over northeast and adjoining eastcentral Arabian Sea and along & off Gujarat and North Konkan coasts till 9th September 2025.

(iv) Warning:

- Fishermen are advised not to venture into northeast and adjoining eastcentral Arabian Sea and along & off Gujarat and North Konkan coasts till 9th September 2025.
- Small ships/shipping activities are to be monitored and regulated till 9th September 2025.
- Judicious regulation of tourism, recreational and onshore/off shore operations till 9th September.

(v) Impact Expected and Action Suggested due to very heavy/extremely heavy rainfall and squally winds over south Rajasthan and Gujarat state

Impact expected:

- ❖ Heavy rainfall may damage plantation, horticulture and standing crops.
- ❖ Partial damage to vulnerable structures due to heavy rain.
- ❖ Minor damage to kutcha houses/walls, huts and roads due to heavy rain.
- ❖ Road and rail traffic may be affected due to heavy rain.
- ❖ There could be localised landslides, mudslides, landslips in the hilly areas and water logging, inundation and flooding over low lying areas.
- ❖ Occasional reduction in visibility due to heavy rainfall.
- ❖ Helicopter services may get affected.

Action suggested:

- ❖ People are advised to keep a watch on the weather for worsening conditions and be ready to move to safer places accordingly.
- ❖ Take safe shelters; do not take shelter under trees, as there could be lightning.
- ❖ In case of expected lightning, unplug electrical/ electronic appliances, immediately, get out of water bodies and keep away from all the objects that conduct electricity.
- ❖ Tourism and recreational activities to be regulated.
- ❖ Helicopter services to be regulated.
- ❖ Avoid moving into vulnerable areas, as the surface transport and vehicular movement may be affected due to rain and wind

Next bulletin will be issued at 1230 hrs IST of today, the 08th September, 2025.

(Ananda Kumar Das)

Scientist-F, IMD, New Delhi

Copy to: Regional Meteorological Centres- Mumbai, Meteorological Centres Ahmedabad, Jaipur.



**OBSERVED AND FORECAST TRACK OF DEEP DEPRESSION OVER
SOUTHEAST PAKISTAN AND ADJOINING RAJASTHAN AND KUTCH
BASED ON 0000 UTC (0530 IST) OF 08th SEP, 2025.**



DATE/TIME IN UTC

IST=UTC + 0530

L: LOW PRESSURE AREA

WML: WELL MARKED LOW PRESSURE AREA

D: DEPRESSION (17-27 KT)

DD: DEEP DEPRESSION (28-33 KT)

CS: CYCLONIC STORM (34-47 KT)

SCS: SEVERE CYCLONIC STORM (48-63KT)

VSCS: VERY SEVERE CYCLONIC STORM (64-89 KT)

ESCS: EXTREMELY SEVERE CYCLONIC STORM (90-119 KT)

SuCS: SUPER CYCLONIC STORM \geq 120 KT)

● LESS THAN 34 KT

⬤ 34-47 KT

⬤ \geq 48 KT

— OBSERVED TRACK

— FORECAST TRACK

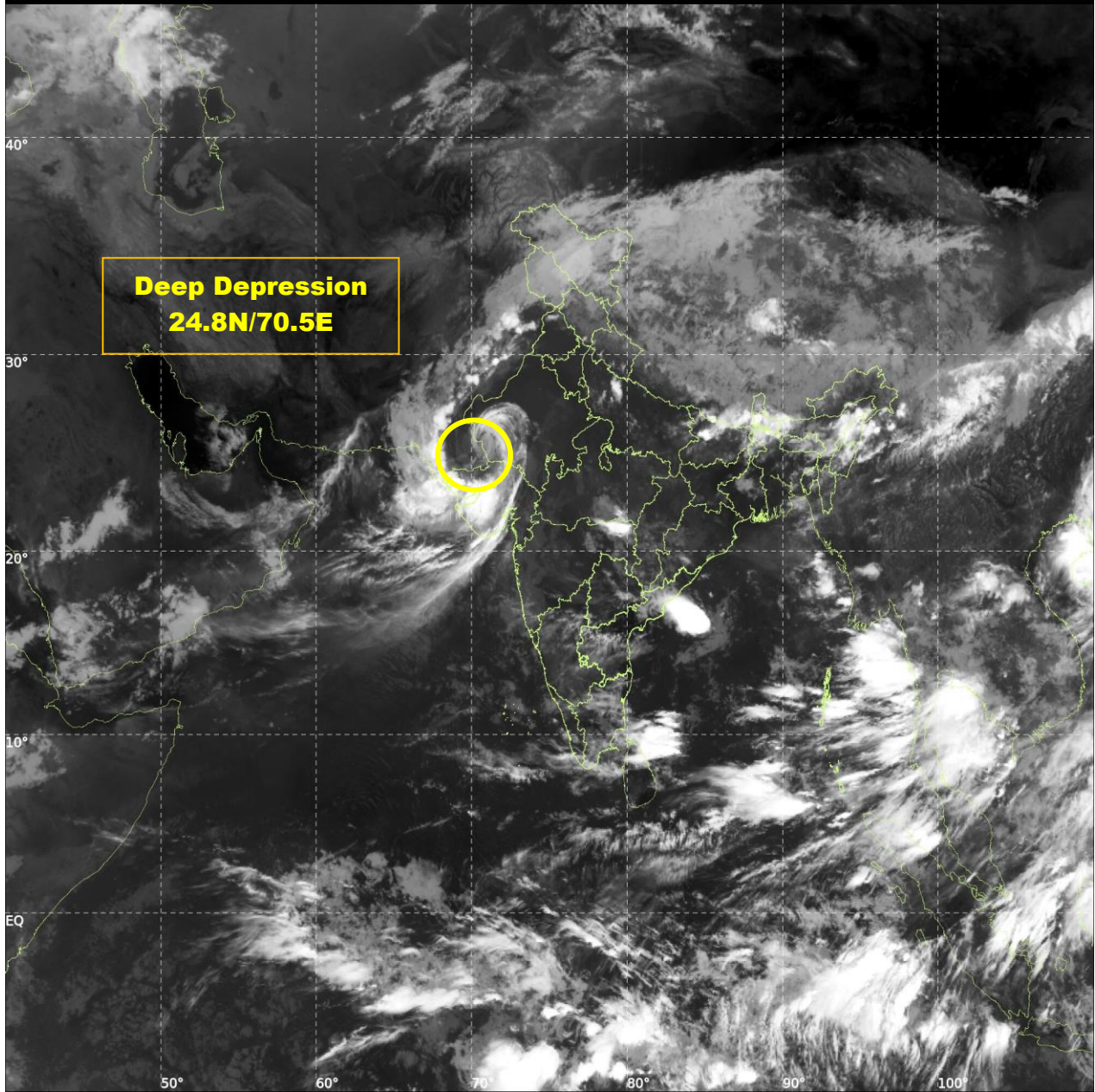
▲ CONE OF UNCERTAINTY



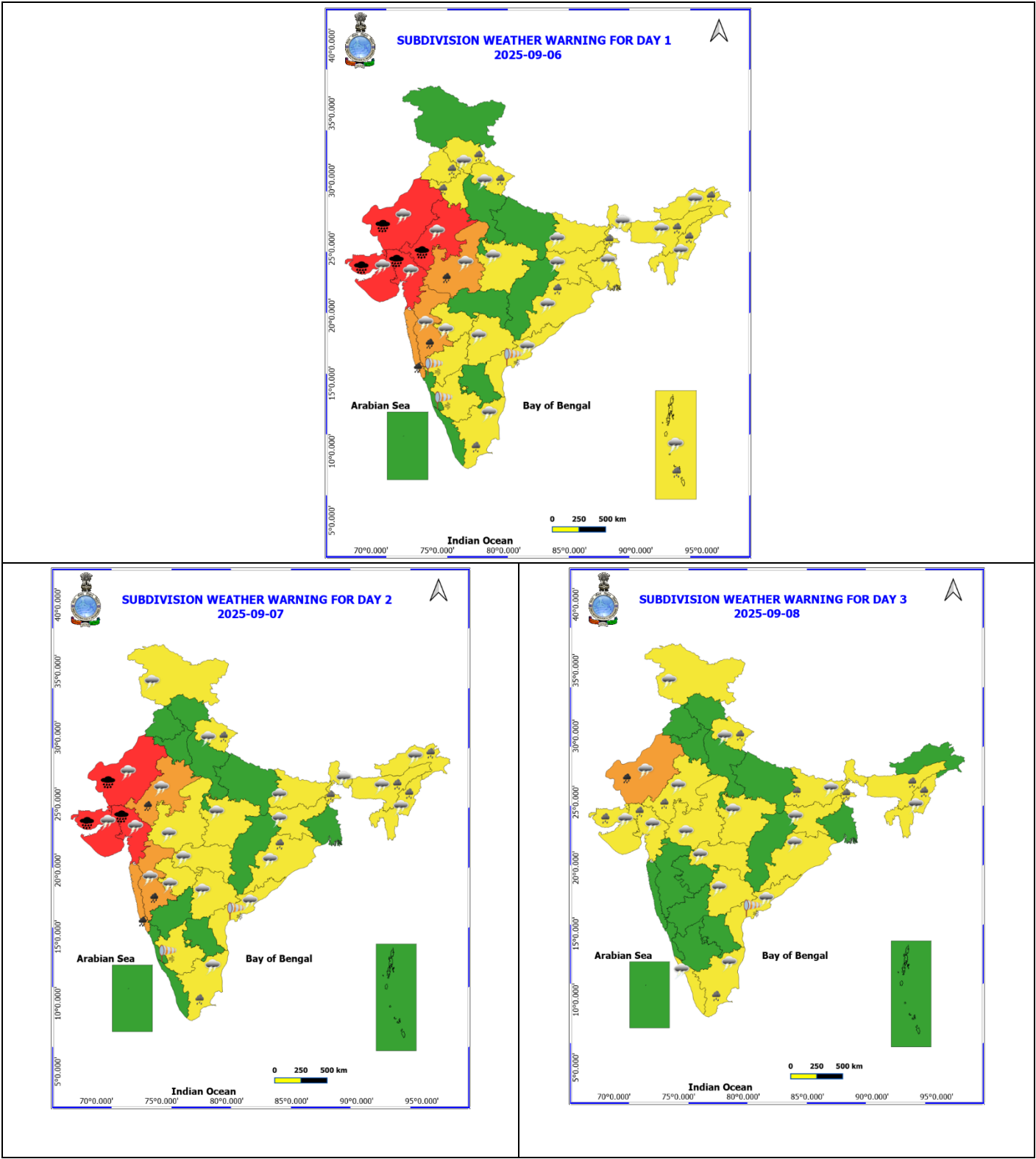
INSAT-3DS IMG, Thermal Infrared1 Count @ 10.83 μm
GMT:08-09-2025/(0230-0257) IST:08-09-2025/(0800-0827)
LIC MERCATOR (LINEAR STRETCH: 1%)

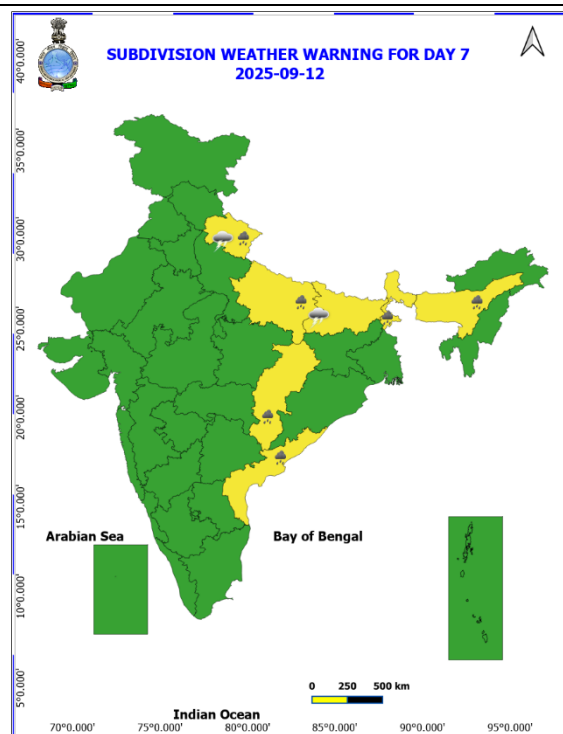
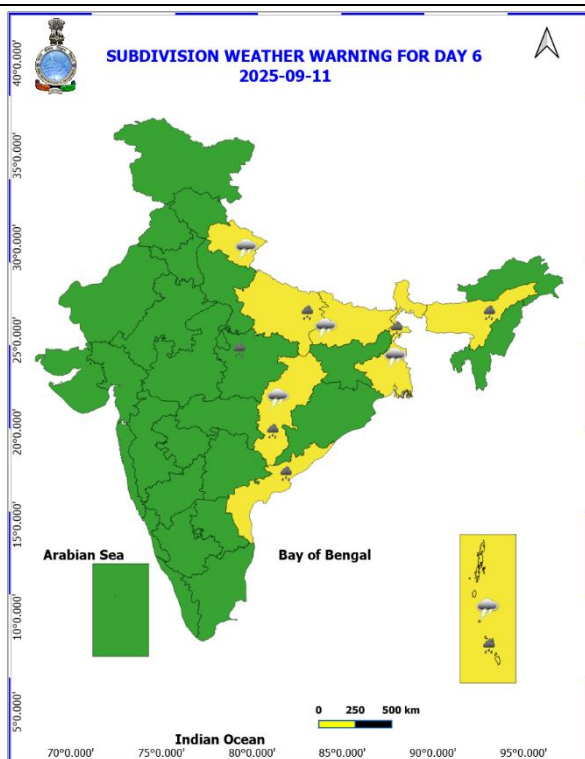
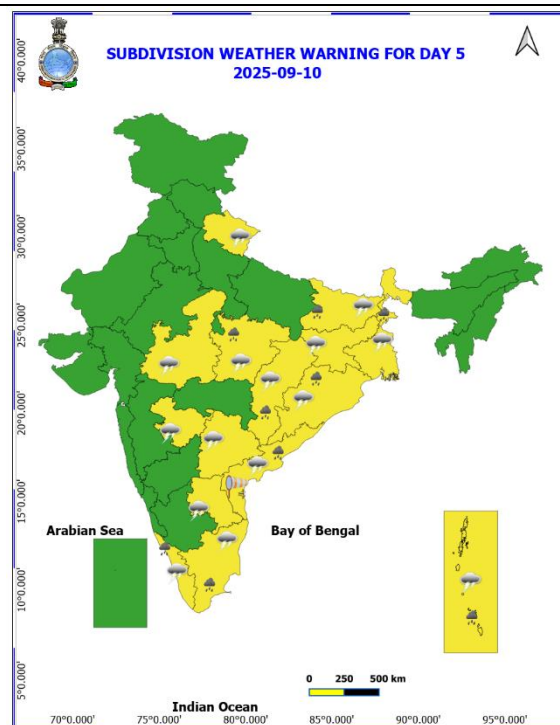
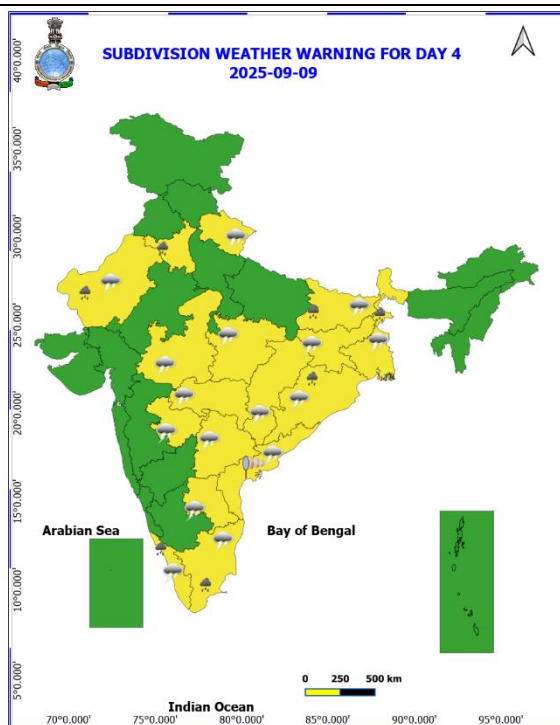
455

902



Weather Warning Graphics





- Action may be taken based on **ORANGE** AND **RED** COLOUR warnings.
- Vulnerable regions likely urban and hilly areas action may be initiated for heavy rainfall warning.
- As the lead period increases forecast accuracy decreases.

Flash Flood Guidance

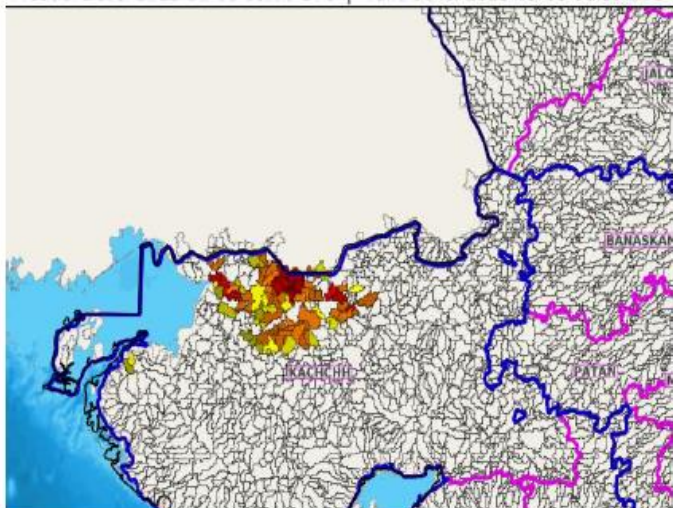
Persistent Flash Flood Threat (PFFT) till 1130 IST of 08-09-2025 :

Moderate flash flood threat likely over few watersheds & neighbourhoods of following Met Sub-divisions during next 6 hours.

Saurashtra & Kutch - Kachchh district.

Surface runoff/ Inundation may occur at some fully saturated soils & low-lying areas over Area of Concern (AoC) as shown in map due to expected rainfall occurrence in next 6 hours.

Product: NCUM FFFT | Timescale: 06-hr | Region: "REGIONAL"
Product Date: 2025-09-08 00:00 UTC | Valid Date: 2025-09-08 06:00 UTC



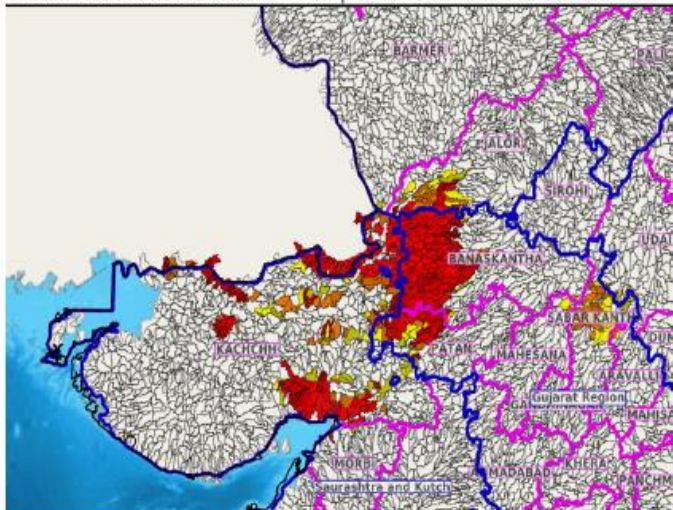
24 hours Outlook for the Flash Flood Risk (FFR) till 0530 IST of 09-09-2025 :

Moderate flash flood risk likely over few watersheds & neighbourhoods of following Met Sub-divisions during next 24 hours.

West Rajasthan - Barmer and Jalor districts.
Gujarat Region - Banaskantha, Patan and Sabar Kantha districts.
Saurashtra & Kutch - Kachchh district.

Surface runoff/ Inundation may occur at some fully saturated soils & low-lying areas over Area of Concern (AoC) as shown in map due to expected rainfall occurrence in next 24 hours.

Product: WRF FFR | Timescale: 24-hr | Region: "REGIONAL"
Product Date: 2025-09-08 00:00 UTC | Valid Date: 2025-09-09 00:00 UTC



Flash Flood Threat	Flash Flood Risk
 High Threat (Take Action)	 High Risk (Take Action)
 Moderate threat (Be Prepared)	 Moderate Risk (Be Prepared)
 Low Threat (Be Updated)	 Low Risk (Be Updated)

Fishermen Warning Graphics

