



India Meteorological Department
(Ministry of Earth Sciences)

NATIONAL BULLETIN NO. 19

TIME OF ISSUE: 0045 HOURS IST

DATED: 03.02.2023

FROM: INDIA METEOROLOGICAL DEPARTMENT (FAX NO. 24643965/24699216/24623220)

TO: CONTROL ROOM, NDM, MINISTRY OF HOME AFFAIRS (FAX.NO. 23093750)

CONTROL ROOM NDMA (FAX.NO. 26701729)

CABINET SECRETARIAT (FAX.NO.23012284, 23018638)

PS TO HON'BLE MINISTER FOR S & T AND EARTH SCIENCES (FAX NO.23316745)

SECRETARY, MOES (FAX NO. 24629777)

H.Q. (INTEGRATED DEFENCE STAFF AND CDS) (FAX NO. 23005137/23005147)

DIRECTOR GENERAL, DOORDARSHAN (23385843)

DIRECTOR GENERAL, AIR (23421105, 23421219)

PIB MOES (FAX NO. 23389042)

UNI (FAX NO. 23355841)

D.G. NATIONAL DISASTER RESPONSE FORCE (NDRF) (FAX NO. 26105912, 2436 3260)

DIRECTOR, PUNCTUALITY, INDIAN RAILWAYS (FAX NO. 23388503)

CHIEF SECRETARY, ANDAMAN & NICOBAR ISLANDS (FAX NO. 03192- 232656)

CHIEF SECRETARY, GOVT. OF TAMIL NADU (FAX NO. 044-25672304)

CHIEF SECRETARY, GOVT. OF PUDUCHERRY (FAX NO. 0413-2337575, 2334145)

CHIEF SECRETARY, GOVT. OF KERALA (FAX NO. 0471-232716)

Sub: Well-Marked Low Pressure Area over Comorin and adjoining Gulf of Mannar & west coast of Sri Lanka

The Depression over south Sri Lanka moved southwestwards during past 06 hours and weakened into a well-marked low pressure area over Comorin and adjoining Gulf of Mannar & west coast of Sri Lanka at 2330 hours IST of 02nd February. It is very likely to continue to move southwestwards and weaken gradually into a low pressure area during next 12 hours.

Warnings:

(i) Rainfall (warning graphics enclosed)

- ❖ Light/moderate rainfall is very likely at many places over south Tamil Nadu and south Kerala with isolated **heavy rainfall** over south Tamil Nadu during next 12 hours.

(ii) Wind warning:

❖ **Southwest Bay of Bengal:**

- Strong wind with speed reaching 30-40 kmph gusting to 50 kmph during next 12 hours.

❖ **West Sri Lanka coast:**

- ❖ Squally weather with wind speed reaching 30-40 kmph gusting to 50 kmph during next 12 hours.

❖ **Comorin area, Gulf of Mannar, along & off south Tamil Nadu & Karaikal and south Kerala coasts:**

- ❖ Squally weather with wind speed reaching 30-40 kmph gusting to 50 kmph during next 12 hours.

(iii) Sea condition

❖ **Sea condition likely to be moderate to rough**

- ❖ Comorin Area, Gulf of Mannar, south Tamilnadu & south Kerala coasts and west Sri Lanka coast during next 12 hours.

(iv) Fishermen Warning (warning graphics enclosed)

Fishermen are advised not to venture into:

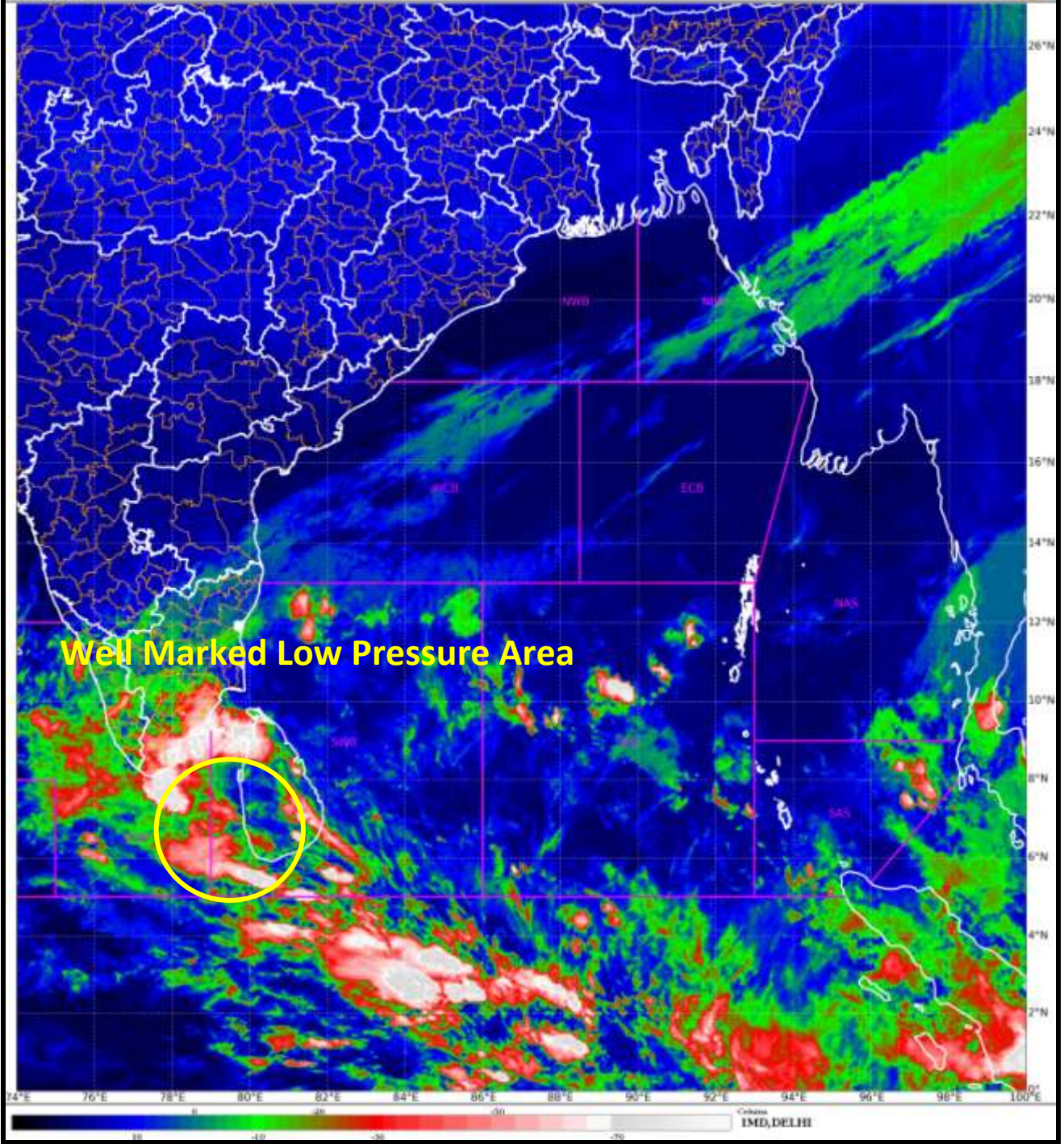
- ❖ Comorin Area, Gulf of Mannar, south Tamilnadu & south Kerala coasts and west Sri Lanka coast during next 12 hours.

This is the last bulletin in association with the system. However regular weather bulletins shall continue from the respective Meteorological Centres and National Weather Forecasting Centre (NWFC), New Delhi in association with the remnant well marked low pressure system.

(Shobhit Katiyar)
Scientist C, Cyclone Warning Division, New Delhi

Copy to: ACWC Kolkata/ ACWC Chennai/ CWC Bhubaneswar/CWC Visakhapatnam/MO Port Blair

LEGEND: Heavy Rainfall: 64.5 to 115.5mm, **Very Heavy Rainfall:** 115.6 to 204.4mm **Most Places:** more than 76% of total stations, **Isolated Places:** Less than 25% of total





OBSERVED TRACK OF DEPRESSION OVER SOUTHWEST BAY OF BENGAL (30TH JANUARY TO 2ND FEBRUARY, 2023)



DATE/TIME IN UTC
IST=UTC + 0530
L: LOW PRESSURE AREA
WML: WELL MARKED LOW PRESSURE AREA
D: DEPRESSION (17-27 KT)
DD: DEEP DEPRESSION (28-33 KT)
CS: CYCLONIC STORM (34-47 KT)
SCS: SEVERE CYCLONIC STORM (48-63KT)
VSCS: VERY SEVERE CYCLONIC STORM (64-89 KT)
ESCS: EXTREMELY SEVERE CYCLONIC STORM (90-119 KT)
SuCS: SUPER CYCLONIC STORM (\geq 120 KT)


- LESS THAN 34 KT
- 34-47 KT
- \geq 48 KT
- OBSERVED TRACK
- FORECAST TRACK
- CONE OF UNCERTAINTY



WARNING

WARNING (TAKE ACTION)
ALERT (BE PREPARED)
WATCH (BE UPDATED)
NO WARNING (NO ACTION)

-  Heavy Rain
-  Strong Winds
-  Frost

-  Heavy Snow
-  Visibility
-  Cold Wave

-  Thunderstorm
-  Cyclone
-  Heat Wave

-  Dust Storm
-  Squall/ Hail
-  Sea State

Fishermen warning graphics



Squally WX with wind speed 40-45 kmph gusting to 55 kmph

Squally wind speed 40-50 kmph gusting to 65 kmph

Fishermen are advised not to venture into the marked areas.