



**India Meteorological Department
(Ministry of Earth Sciences)**

National Bulletin No. 31 (BOB/08/2025)

TIME OF ISSUE: 1530 HOURS IST

DATED: 29.11.2025

FROM: INDIA METEOROLOGICAL DEPARTMENT (FAX NO. 24643965/24699216/24623220)

TO: CONTROL ROOM, NDM, MINISTRY OF HOME AFFAIRS (FAX.NO. 23093750)

CONTROL ROOM NDMA (FAX.NO. 26701729)

CABINET SECRETARIAT (FAX.NO.23012284, 23018638)

PS TO HON'BLE MINISTER FOR S & T AND EARTH SCIENCES (FAX NO.23316745)

SECRETARY, MOES (FAX NO. 24629777)

H.Q. (INTEGRATED DEFENCE STAFF AND CDS) (FAX NO. 23005137/23005147)

DIRECTOR GENERAL, DOORDARSHAN (23385843)

DIRECTOR GENERAL, AIR (23421105, 23421219)

PIB MOES (FAX NO. 23389042)

UNI (FAX NO. 23355841)

D.G. NATIONAL DISASTER RESPONSE FORCE (NDRF) (FAX NO. 26105912, 2436 3260)

DIRECTOR, PUNCTUALITY, INDIAN RAILWAYS (FAX NO. 23388503)

CHIEF SECRETARY, ODISHA (FAX NO. 0674-2536660)

CHIEF SECRETARY, WEST BENGAL (FAX NO. 033-22144328)

CHIEF SECRETARY, ANDAMAN & NICOBAR ISLANDS (FAX NO. 03192-232656)

CHIEF SECRETARY, TAMIL NADU (FAX NO. 044-25672304)

CHIEF SECRETARY, ANDHRA PRADESH (FAX NO. 0863-2441029)

CHIEF SECRETARY, PUDUCHERRY (FAX NO. 0413-2334145)

CHIEF SECRETARY, KERALA (FAX NO. 0471-2327176)

CHIEF SECRETARY, LAKSHADWEEP (FAX NO. 048-96268124)

Subject: Cyclonic Storm Ditwah [Pronunciation: Ditwah] over southwest Bay of Bengal and adjoining north Sri Lanka: Cyclone Warning for north Tamil Nadu & Puducherry and adjoining south Andhra Pradesh coasts (Red Message)

The **Cyclonic Storm Ditwah [Pronunciation: Ditwah]** over southwest Bay of Bengal and adjoining north Sri Lanka moved northwards with the speed of 10 kmph during past 6 hours and lay centered at 1130 hrs IST of today, the 29th November 2025 over the same region, near latitude 9.9°N and longitude 80.7°E, about 80 km east-northeast of Jaffna (Sri Lanka), 110 km southeast of Vedaranniyam (India), 150 km southeast of Karaikal (India), 250 km south-southeast of Puducherry (India) and 350 km south of Chennai (India).

It is very likely to move north-northwestwards and reach over southwest Bay of Bengal near North Tamil Nadu, Puducherry and adjoining south Andhra Pradesh coasts by early morning of 30th November.

While moving north-northwestwards the cyclonic storm will be centered over southwest Bay of Bengal within a minimum distance of 60 km, 50 km and 25km from the Tamil Nādu-Puducherry coastline by midnight of today, the 29th November, early morning and evening of tomorrow, the 30th November respectively.

Forecast track and intensity are given in Table below

Date/Time (IST)	Position (Lat. °N/ Long. °E)	Maximum Sustained Surface Wind Speed (Kmph)	Category Of Cyclonic Disturbance
29.11.25/1130	9.9/80.7	70-80 gusting to 90	Cyclonic Storm
29.11.25/1730	10.2/80.6	70-80 gusting to 90	Cyclonic Storm
29.11.25/2330	10.6/80.5	70-80 gusting to 90	Cyclonic Storm
30.11.25/0530	11.1/80.4	70-80 gusting to 90	Cyclonic Storm
30.11.25/1130	11.8/80.3	65-75 gusting to 85	Cyclonic Storm
30.11.25/2330	13.0/80.4	60-70 gusting to 80	Cyclonic Storm
01.12.25/1130	14.2/80.5	45-55 gusting to 65	Depression

(i) Rainfall Warning:

- ❖ **Tamil Nadu & Puducherry:** Light to moderate rainfall at most places with **heavy to very heavy at many places & extremely heavy rainfall (>20 cm) at isolated places** over coastal Tamil Nadu on 29th and over north coastal Tamil Nadu & Puducherry on 30th November, 2025. Thereafter, rainfall would gradually decrease to light to moderate at many places with **heavy rainfall** at isolated places on 1st December.
- ❖ **Coastal Andhra Pradesh-Yanam & Rayalaseema:** Light to moderate rainfall at most places with **heavy to very heavy rainfall** at isolated places on 29th November and **heavy to very heavy at a few places & extremely heavy rainfall (>20 cm) at isolated places on 30th November**. It would then decrease gradually becoming light to moderate rainfall at many places with **heavy rainfall** at isolated places on 1st December.
- ❖ **Kerala & Mahe:** Light to moderate rainfall at many places with **heavy rainfall** at isolated places is very likely on 29th November.
- ❖ **Telangana:** Light to moderate rainfall at a few places with **heavy rainfall** at isolated places is very likely on 30th November.

N.B. (Refer to ANNEXURE I for significant observed rainfall during past 24 Hours)

(ii) Wind Warning:

(a) Southwest Bay of Bengal, Gulf of Mannar, Comorin area and along & off north Sri Lanka coasts

Gale wind speed reaching 70-80 gusting to 90 kmph is prevailing and likely to continue till 30th November morning. Thereafter it is likely to decrease gradually becoming squally wind speed reaching 45-55 gusting to 65 kmph by morning of 1st December.

(b) Along & off south Tamil Nadu coast

Gale wind speed reaching 70-80 gusting to 90 kmph is prevailing and likely to continue till 30th November morning. Thereafter it is likely to decrease gradually becoming squally wind speed reaching 45-55 gusting to 65 kmph by morning of 1st December.

(c) Along & off north Tamil Nadu & Puducherry Coasts

Gale wind speed reaching 70-80 gusting to 90 kmph is prevailing along & off southern parts and 60 to 70kmph gusting to 80 kmph over northern parts of Tamil Nadu-Puducherry coast. It is likely to increase becoming 70-80 gusting to 90 kmph along & off north Tamil Nadu & Puducherry Coasts from afternoon of 29th November till 30th morning. Thereafter it is likely to decrease gradually becoming squally wind speed reaching 45-55 gusting to 65 kmph by 1st December morning.

(d) Adjoining Westcentral Bay of Bengal and along & off south Andhra Pradesh coast:

Squally weather with wind speed reaching 50-60 kmph gusting to 70 kmph is prevailing. It is very likely to increase becoming Gale wind speed reaching 60-70 kmph gusting to 80 kmph from 29th afternoon till 30th morning. Thereafter, it is likely to decrease becoming squally wind speed reaching 45-55 kmph gusting to 65 kmph on 01st December morning.

(e) Adjoining areas of Southeast Arabian Sea, Lakshadweep, Maldives and along & off Kerala coast:

Squally weather with wind speed reaching 45-55 kmph gusting to 65 kmph likely to prevail on 29th November.

(iii) Sea Condition:

(a) Southwest Bay of Bengal, Gulf of Mannar, Comorin area and along & off Sri Lanka coasts

Sea condition is very likely to be High till 30th November morning. It is very likely to improve gradually becoming very rough to rough by morning of 1st December and gradually improve thereafter.

(b) Along & off south Tamil Nadu coast

Sea condition is very likely to be High till 30th November morning. It is very likely to improve gradually becoming very rough to rough by morning of 1st December and gradually improve thereafter.

(c) Along & off north Tamil Nadu & Puducherry Coasts

Sea condition is very likely to be very rough to high. It is likely to become High from 29th afternoon till 30th morning. It is very likely to improve gradually becoming very rough to rough on 1st and 2nd December and gradually improve thereafter.

(d) Adjoining Westcentral Bay of Bengal and along & off south Andhra Pradesh coast:

Rough to very rough sea conditions are prevailing and it is likely to become very rough to high from 29th afternoon till 30th November morning. Thereafter, it is likely to improve gradually becoming very rough to rough on 01st and 2nd December.

(e) Adjoining areas of Southeast Arabian Sea, Lakshadweep, Maldives and along & off Kerala coast:

Rough to very rough sea conditions are likely on 29th November.

(iv) Storm Surge Warning:

Storm surge of height about 1.0 to 1.5 m above the astronomical tide is likely to inundate the low-lying coastal areas of north Sri Lanka till 29th evening. Storm surge of height about 0.5 m to 1m above the astronomical tide is likely to inundate the low-lying coastal areas of Tamil Nadu-Puducherry till 30th morning.

(v) Fishermen Warning:

(a) Total suspension of fishing operations in coastal areas of Sri Lanka, Tamil Nadu, Puducherry and south Andhra Pradesh coasts till 01st December.

(b) Fishermen are advised not to venture into

(i) Southwest Bay of Bengal, Gulf of Mannar, Comorin area and along & off Tamil Nadu, Puducherry & Sri Lanka coasts till 01st December.

(ii) Adjoining areas of westcentral Bay of Bengal and along & off Andhra Pradesh coast till 2nd December.

(iii) Adjoining areas of Southeast Arabian Sea, Lakshadweep, Maldives and along & off Kerala coast till 30th November.

(c) Those out at sea should avoid southwest Bay of Bengal, Gulf of Mannar, Comorin area and along & off Tamil Nadu, Puducherry, south Andhra Pradesh & Sri Lanka coasts; adjoining

westcentral Bay of Bengal till 01st December and Southeast Arabian Sea, Lakshadweep, Maldives and along & off Kerala coast till 30th November.

(vi) Impact Expected and Action Suggested due to heavy rain and strong winds (Tamil Nadu, Puducherry and south Andhra Pradesh)

Impact Expected

- ❖ Damage to thatched houses. Thatched Roof tops may blow off.
- ❖ Damage to power and communication lines.
- ❖ Damage to Kutcha and some damage to Pucca roads. Flooding of escape routes.
- ❖ Breaking of tree branches, uprooting of small trees. Large-scale damage to banana and papaya trees. Dead limbs may blow from trees.
- ❖ Damage to paddy crops, horticultural and standing crops due to inundation & winds.
- ❖ Possibility of coastal flooding and coastal erosion is also very likely over coastal districts of Tamil Nadu, Puducherry and south Andhra Pradesh.
- ❖ Inundation of low-lying areas in coastal districts due to heavy rainfall and flash flood
- ❖ Localized Flooding of roads, water logging in low lying areas
- ❖ Riverine flooding in some river catchments
- ❖ Occasional reduction in visibility due to heavy rainfall.
- ❖ Disruption of traffic due to water logging and squally/gale winds
- ❖ Localized Landslides/Mudslides.

Action suggested:

- ❖ Total suspension of fishing operations.
- ❖ Coastal hutment dwellers to be moved to safer places. People in affected areas to remain indoors.
- ❖ Take safe shelters; do not take shelter under trees, as there could be lightning.
- ❖ Movement in motor boats unsafe.
- ❖ Judicious regulation of offshore/onshore operations
- ❖ People are advised to keep a watch on the weather for worsening conditions and be ready to move to safer places accordingly.
- ❖ In case of expected lightning, unplug electrical/ electronic appliances, immediately, get out of water bodies and keep away from all the objects that conduct electricity.
- ❖ Tourism and recreational activities to be regulated.
- ❖ Surface transport and helicopter services to be regulated.

Next bulletin will be issued at 2030 hours IST of today, the 29th November, 2025.

(Ananda Kumar Das)
Scientist-F, IMD, New Delhi

Copy to: ACWC Kolkata/ACWC Chennai/CWC Bhubaneswar/CWC Vishakhapatnam/CWC Thiruvananthapuram/ Meteorological Centre Vijay Puram/ and Meteorological Centre Amaravati

Annexure I

Significant Rainfall (in cm) during past 24 hours ending at 0830 hrs IST of today, the 29th November 2025

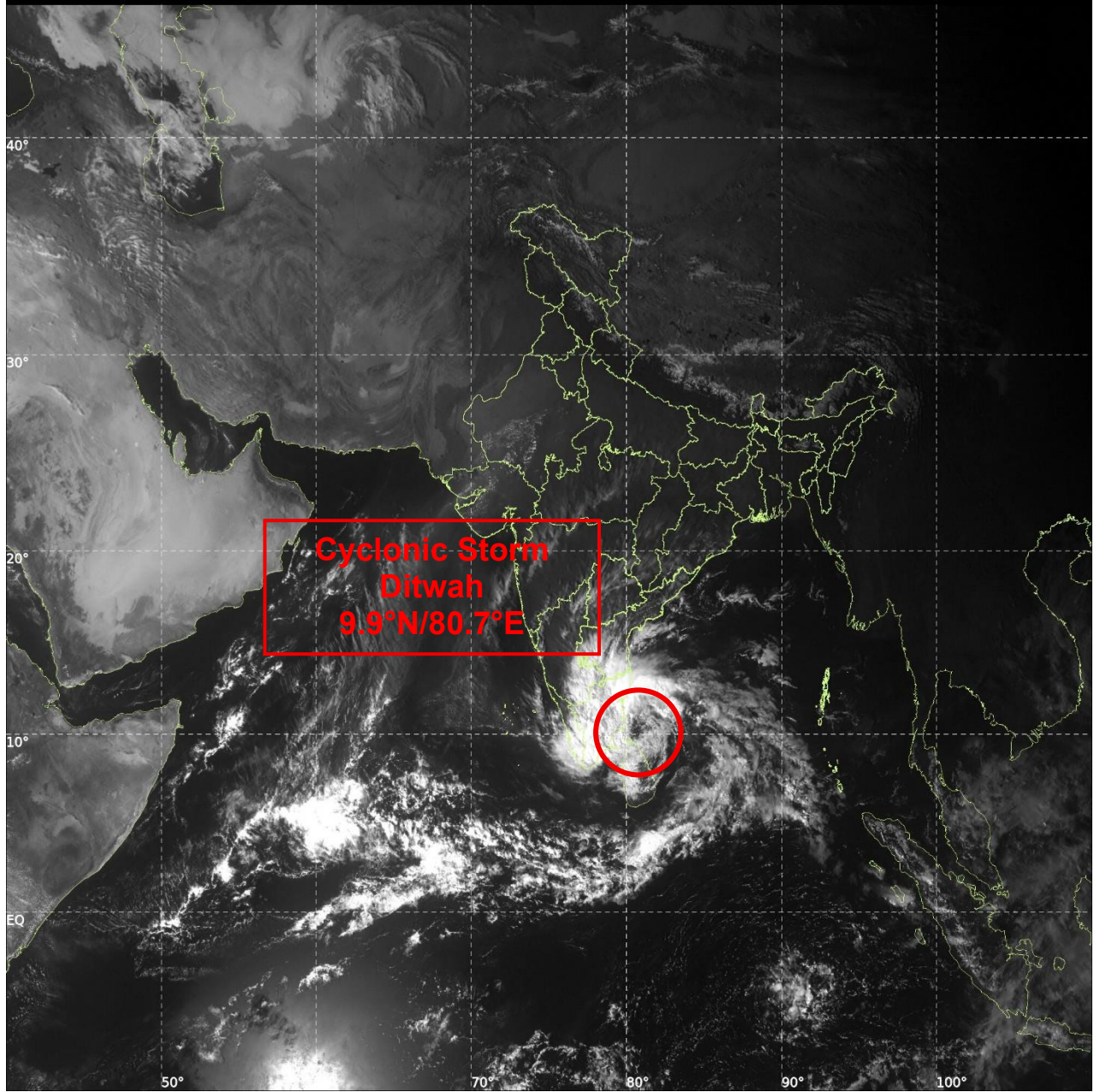
Tamil Nadu, Puducherry & Karaikal: Kodiayakarai (dist Nagapattinam) 25; Vedaranyam (dist Nagapattinam) 18; Velankanni (dist Nagapattinam) 13; Nagapattinam (dist Nagapattinam), Tirupoondi (dist Nagapattinam) 12 Each; Thalaignayer (dist Nagapattinam) 11; Karaikal (dist Karaikal), Pamban (dist Ramanathapuram) 10 Each; Rameswaram (dist Ramanathapuram), Illayangudi (dist Sivaganga), Mandapam (dist Ramanathapuram), Kayalpattinam (dist Toothukudi), Thirukuvalai (dist Nagapattinam), Thangachimadam (dist Ramanathapuram) 7 Each.



INSAT-3DS IMG, Visible Count @ 0.65 μm
GMT:29-11-2025/(0930-0957) IST:29-11-2025/(1500-1527)
LIC MERCATOR (LINEAR STRETCH: 0.5%)

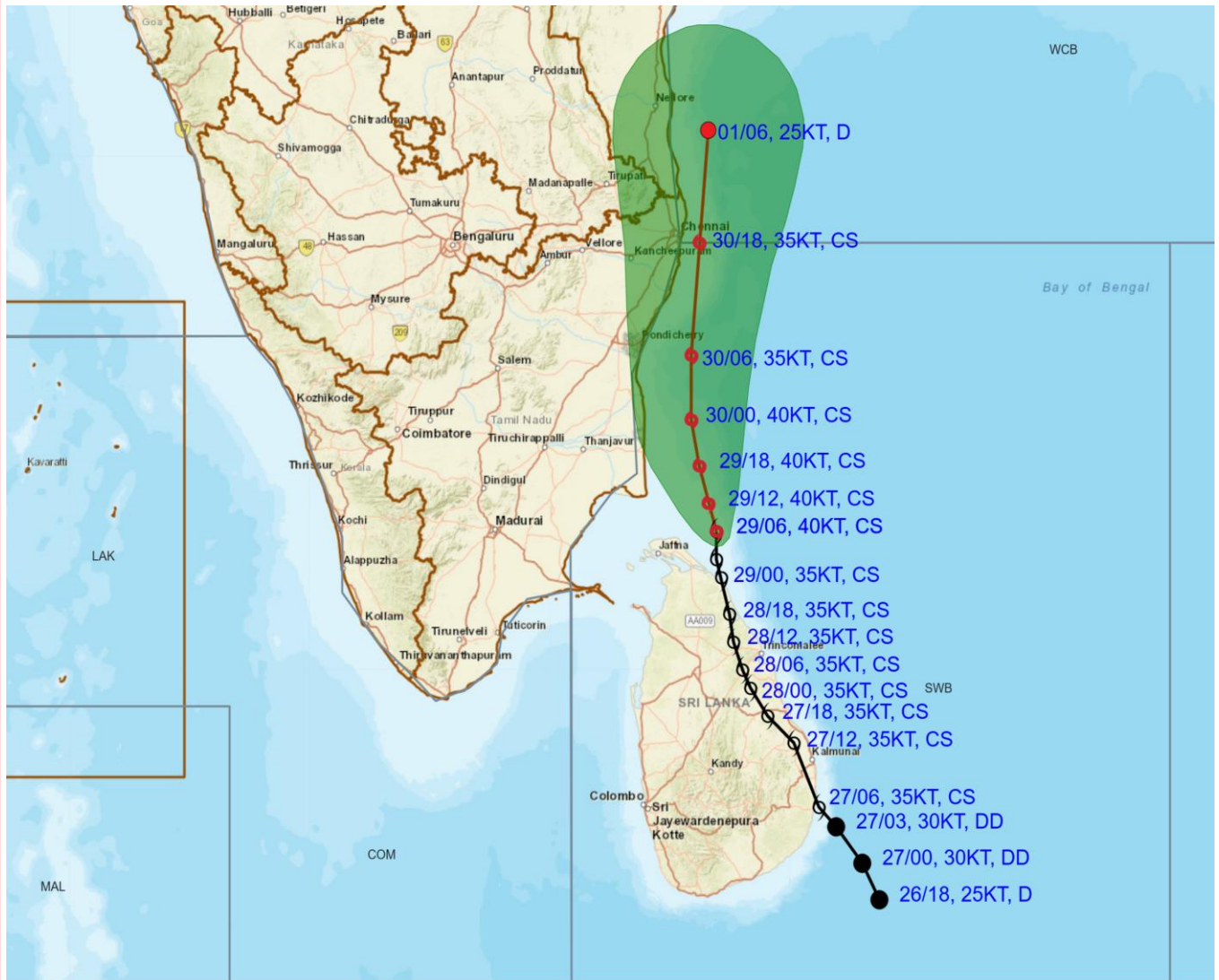
42

263





OBSERVED AND FORECAST TRACK OF CYCLONIC STORM "DITWAH" OVER SOUTHWEST BAY OF BENGAL AND ADJOINING NORTH SRI LANKA BASED ON 0600 UTC (1130 Hrs. IST) OF 29TH NOVEMBER 2025

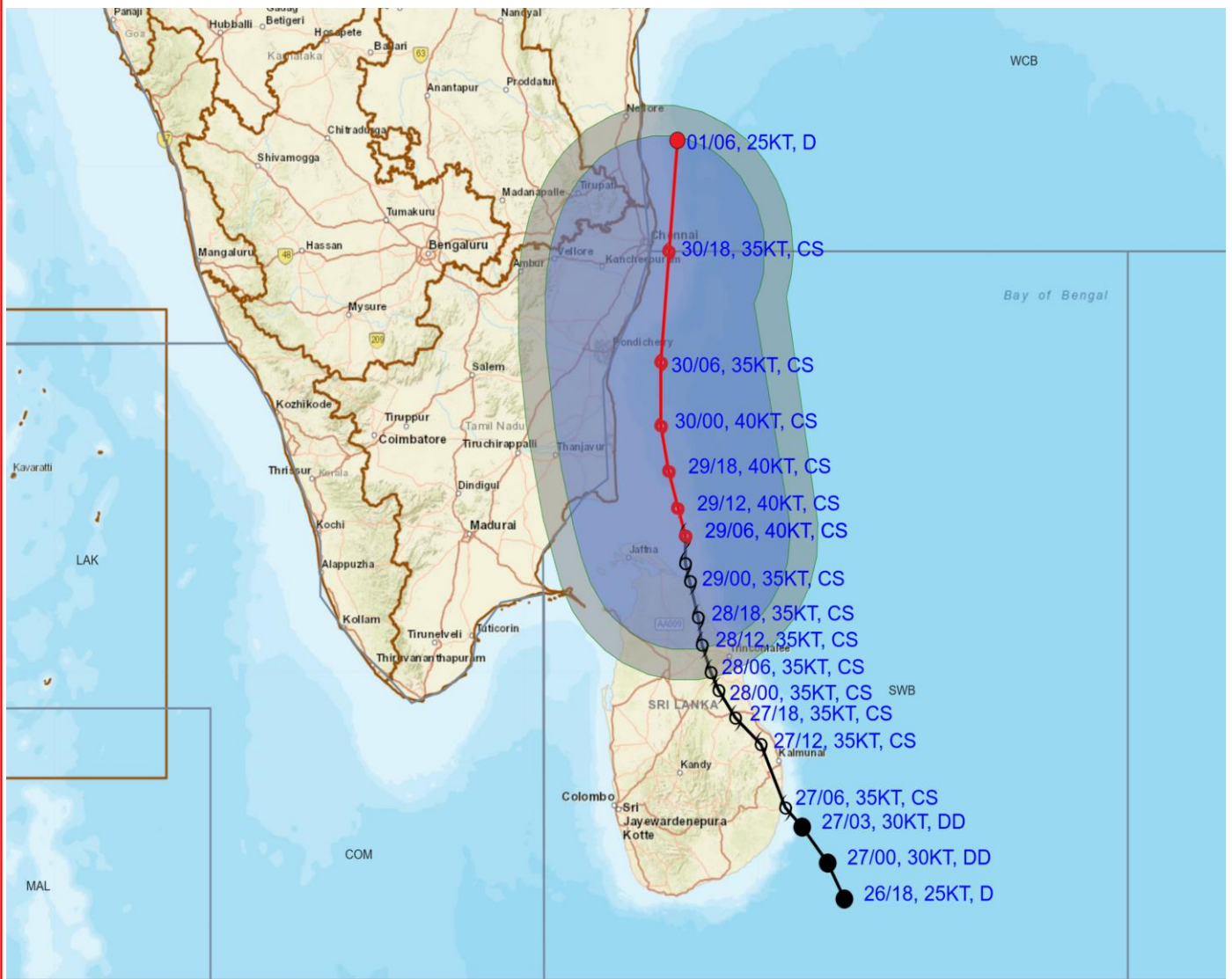


DATE/TIME IN UTC
IST=UTC + 0530
L: LOW PRESSURE AREA
WML: WELL MARKED LOW PRESSURE AREA
D: DEPRESSION (17-27 KT)
DD: DEEP DEPRESSION (28-33 KT)
CS: CYCLONIC STORM (34-47 KT)
SCS: SEVERE CYCLONIC STORM (48-63KT)
VSCS: VERY SEVERE CYCLONIC STORM (64-89 KT)
ESCS: EXTREMELY SEVERE CYCLONIC STORM (90-119 KT)
SuCS: SUPER CYCLONIC STORM (\geq 120 KT)

- LESS THAN 34 KT
- 34-47 KT
- \geq 48 KT
- OBSERVED TRACK
- FORECAST TRACK
- CONE OF UNCERTAINTY



OBSERVED AND FORECAST TRACK ALONGWITH QUADRANT WIND DISTRIBUTION OF CYCLONIC STORM "DITWAH" OVER SOUTHWEST BAY OF BENGAL AND ADJOINING NORTH SRI LANKA BASED ON 0600 UTC (1130 Hrs. IST) OF 29th NOVEMBER 2025



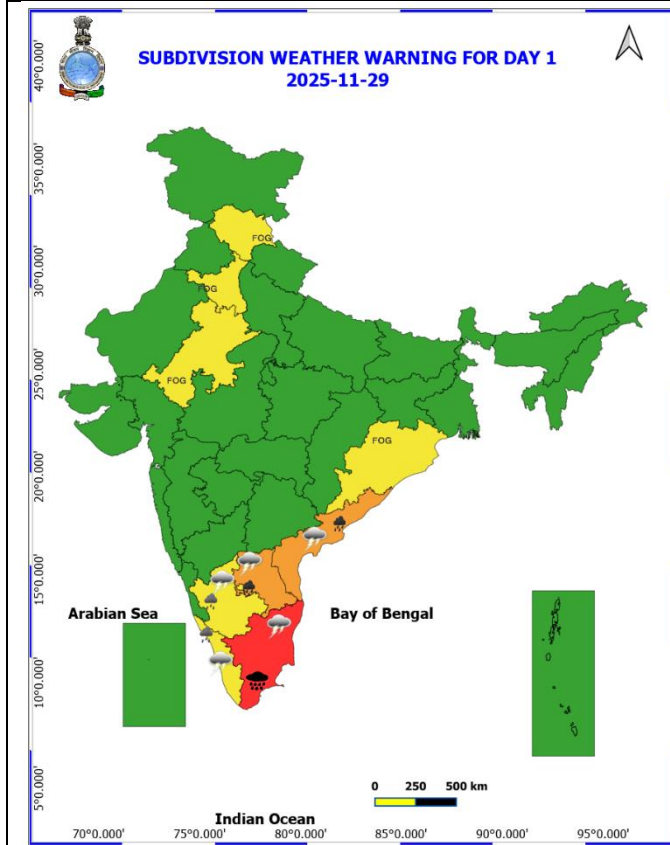
DATE/TIME IN UTC
 IST=UTC + 0530
 L: LOW PRESSURE AREA
 WML: WELL MARKED LOW PRESSURE AREA
 D: DEPRESSION (17-27 KT)
 DD: DEEP DEPRESSION (28-33 KT)
 CS: CYCLONIC STORM (34-47 KT)
 SCS: SEVERE CYCLONIC STORM (48-63KT)
 VSCS: VERY SEVERE CYCLONIC STORM (64-89 KT)
 ESCS: EXTREMELY SEVERE CYCLONIC STORM (90-119 KT)
 SuCS: SUPER CYCLONIC STORM (≥ 120 KT)

● LESS THAN 34 KT
 ○ 34-47 KT
 ⊙ ≥ 48 KT
 — OBSERVED TRACK
 — FORECAST TRACK
 ⊕ CONE OF UNCERTAINTY
 AREA OF MAXIMUM SUSTAINED WIND SPEED:
 ■ 28-33 KT (52-61 KMPH)
 ■ 34-49 KT (62-91 KMPH)
 ■ 50-63 KT (92-117 KMPH)
 ■ ≥ 64 KT (≥118 KMPH)

IMPACT OVER THE SEA

MSW (knot/kmph)	Impact	Action
28-33 (52-61)	Very rough seas	Total suspension of fishing operations
34-49 (62-91)	High to very high seas	Total suspension of fishing operations
50-63 (92-117)	Very high seas	Total suspension of fishing operations
≥ 64 (≥118)	Phenomenal	Total suspension of fishing operations

WEATHER WARNING GRAPHICS



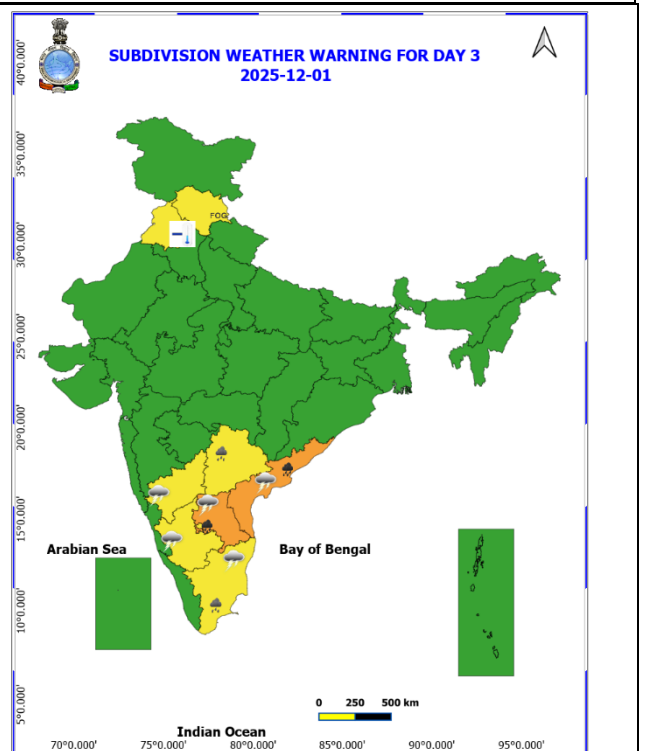
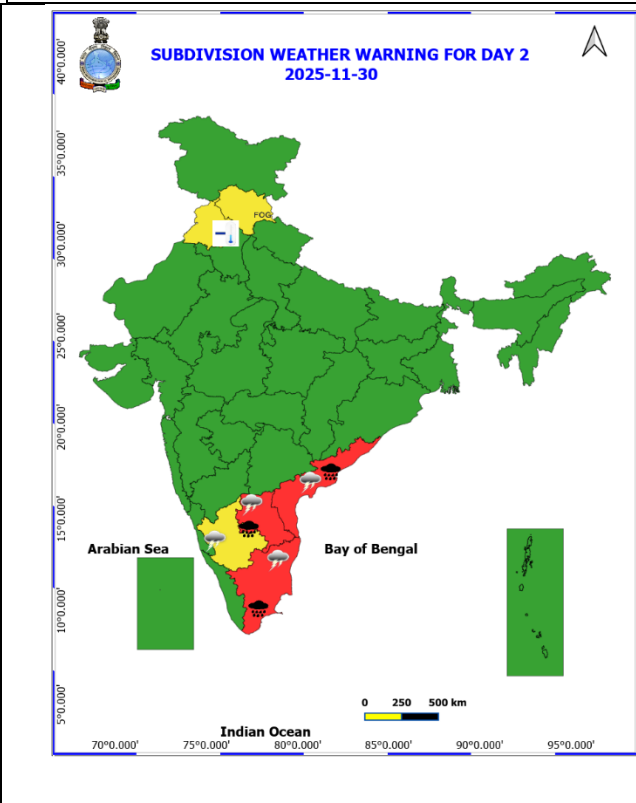
- Heavy Rain
- Very Heavy Rain
- Extremely Heavy Rain

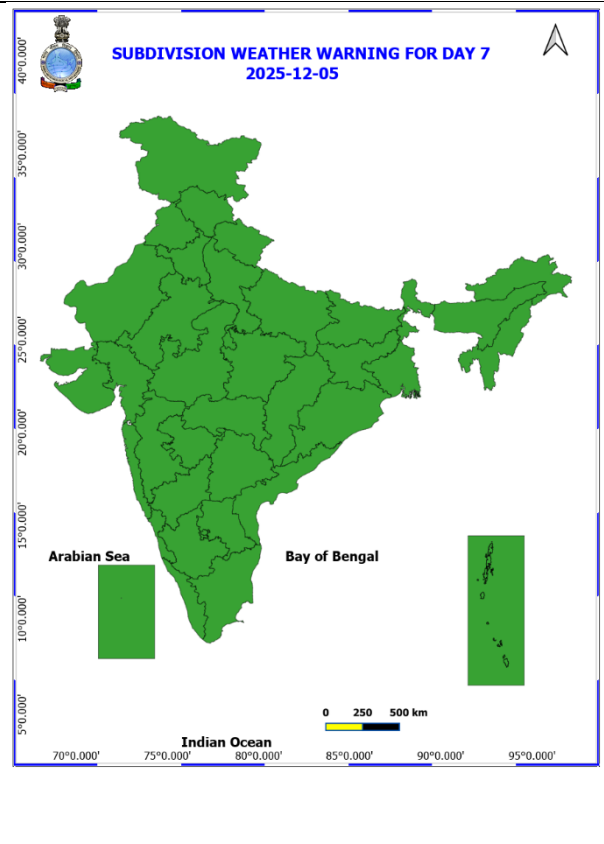
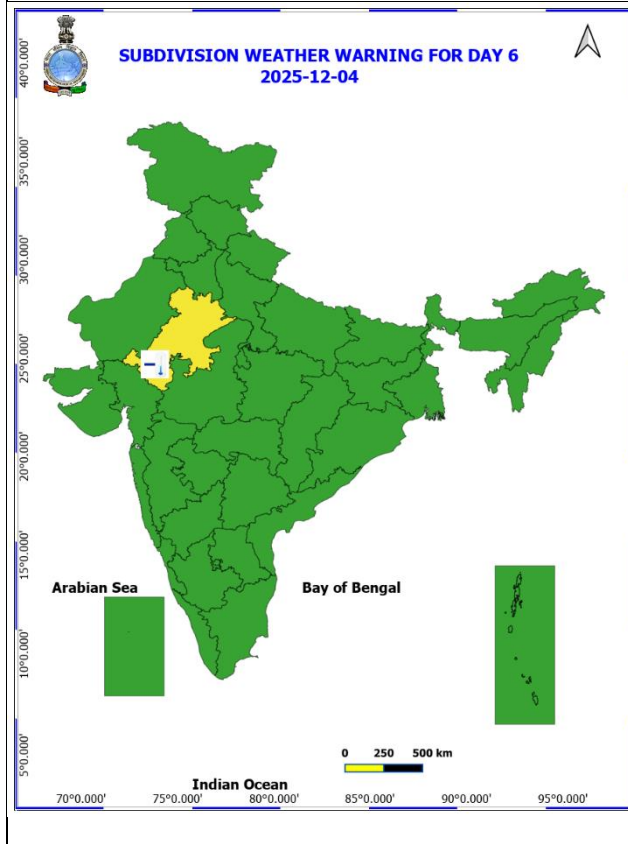
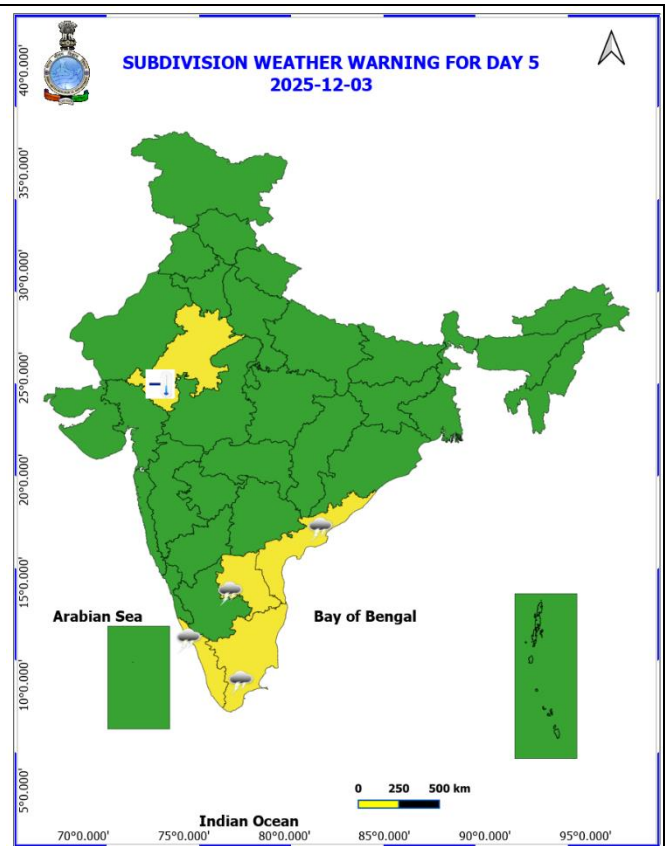
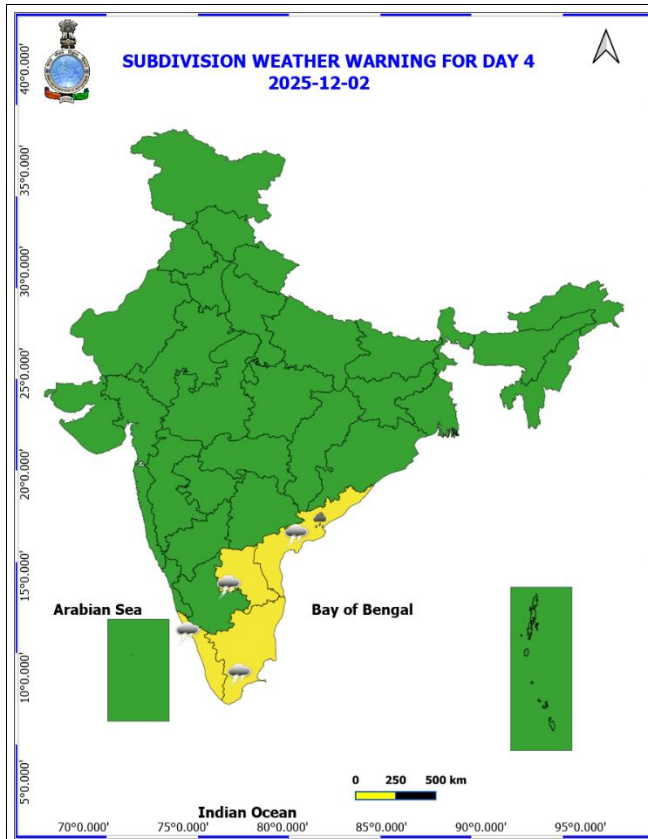
COLOUR CODED WARNING

- No Warning (No Action)
- Watch (Be Aware)
- Alert (Be Prepared To Take Action)
- Warning (Take Action)

Probabilistic Forecast

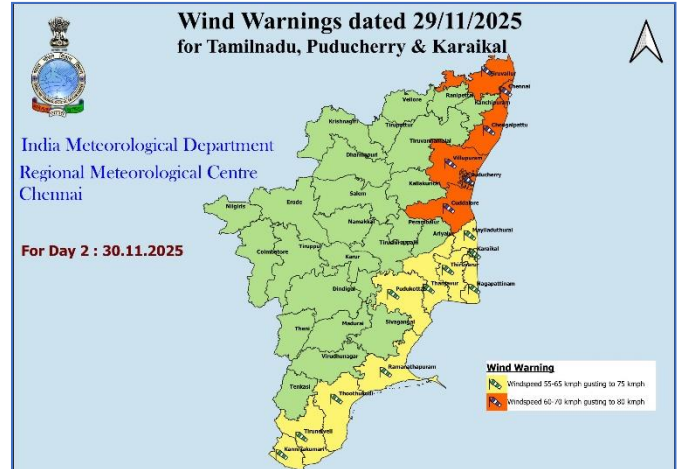
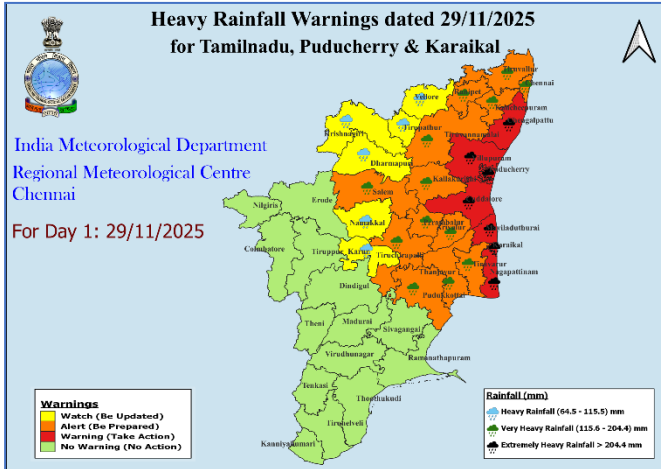
Terms	Probability of Occurrence (%)
Unlikely	< 25
Likely	25 - 50
Very Likely	50 - 75
Most Likely	> 75



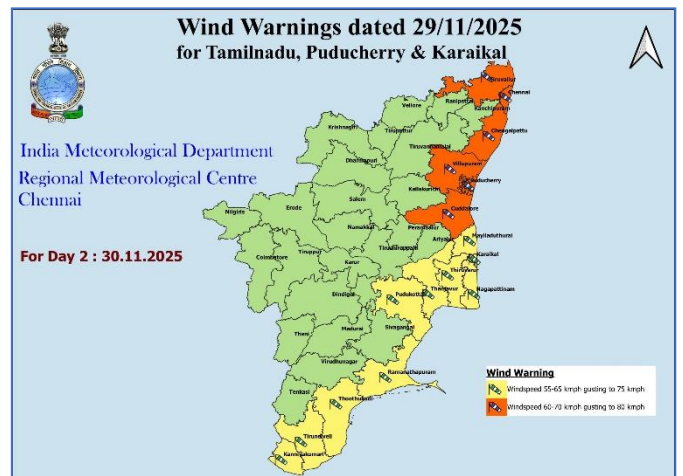
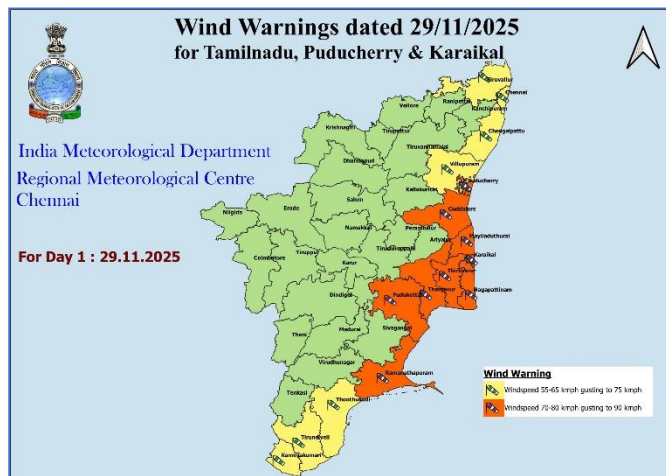


- Action may be taken based on **ORANGE AND RED** COLOUR warnings.
- Vulnerable regions likely urban and hilly areas action may be initiated for heavy rainfall warning.
- As the lead period increases forecast accuracy decreases.

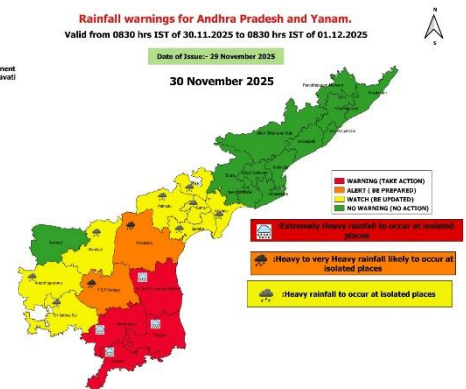
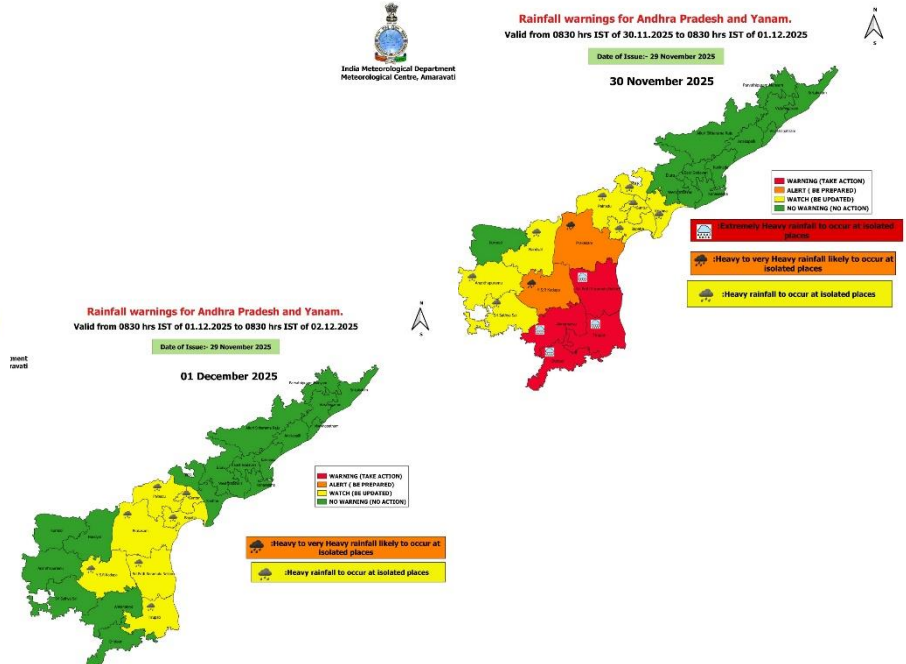
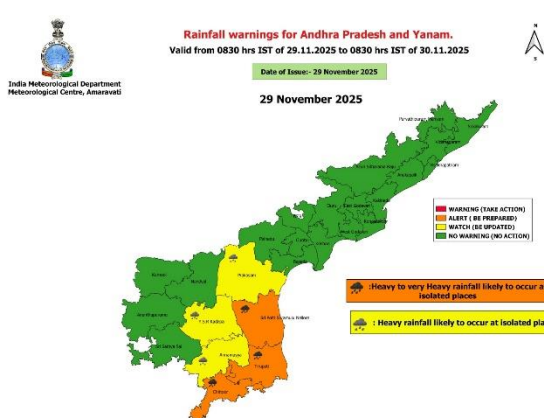
District-wise Heavy Rainfall for Tamil Nadu & Puducherry



Wind Warning Graphics



District-wise Warning Graphics for Andhra Pradesh & Yanam



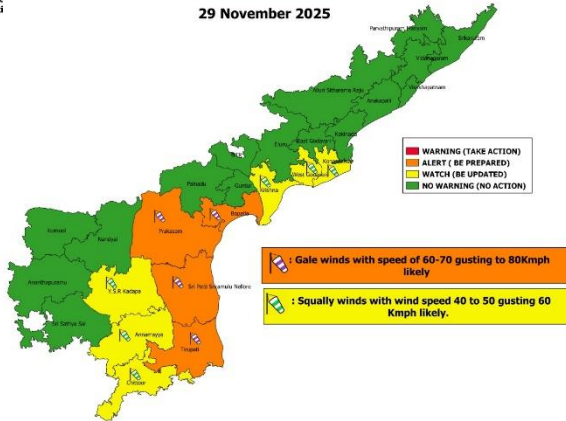
Wind Warning



Wind warnings for Andhra Pradesh and Yanam.
Valid from 0830 hrs IST of 29.11.2025 to 0830 hrs IST of 30.11.2025

Date of Issue:- 29 November 2025

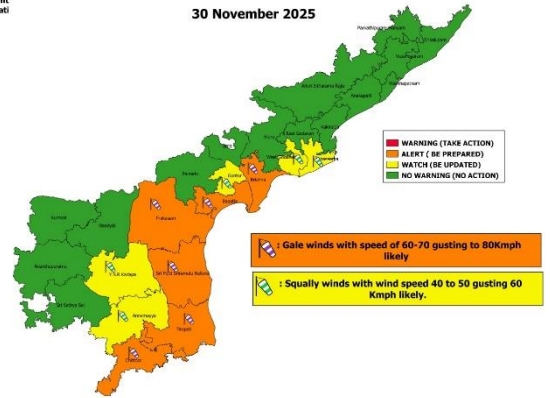
29 November 2025



Wind warnings for Andhra Pradesh and Yanam.
Valid from 0830 hrs IST of 30.11.2025 to 0830 hrs IST of 01.12.2025

Date of Issue:- 29 November 2025

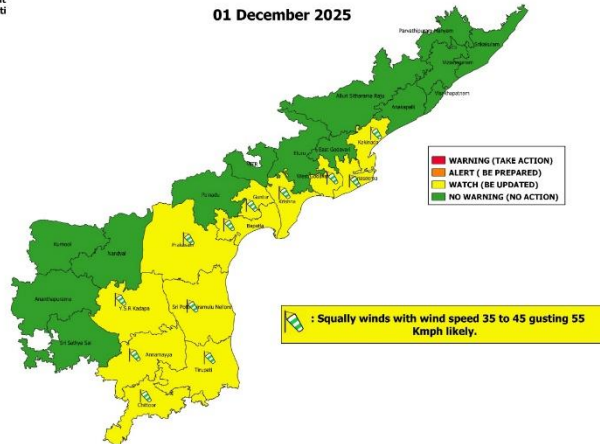
30 November 2025



Wind warnings for Andhra Pradesh and Yanam.
Valid from 0830 hrs IST of 01.12.2025 to 0830 hrs IST of 02.12.2025

Date of Issue:- 29 November 2025

01 December 2025



Flash Flood Guidance

24 hours Outlook for the Flash Flood Risk (FFR) till 1130 IST of 30-11-2025 :

Moderate flash flood risk likely over few watersheds & neighbourhoods of following Met Sub-divisions during next 24 hours.

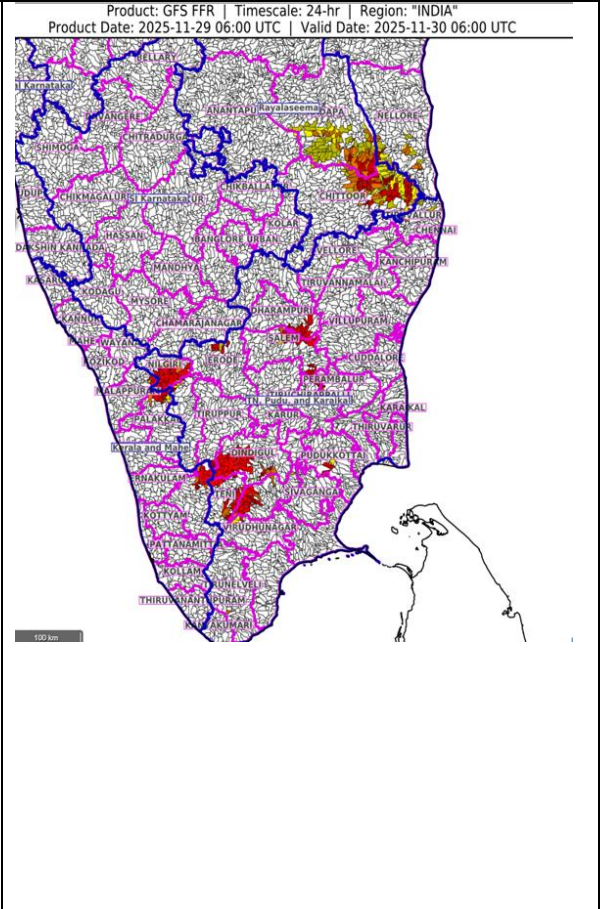
Coastal Andhra Pradesh & Yanam - Nellore district.

Kerala & Mahe - Idukki, Malappuram and Palakkad districts.

Rayalaseema - Chittoor and Kadapa districts.

Tamil Nadu - Puducherry & Karaikal - Dharampuri, Dindigul, Erode, Madurai, Nilgiri, Perambalur, Pudukkottai, Salem, Teni, Tiruchirappalli, Tirunelveli, Tiruppur, Tiruvallur, Vellore and Virudhunagar districts.

Surface runoff/ Inundation may occur at some fully saturated soils & low-lying areas over Area of Concern (AoC) as shown in map due to expected rainfall occurrence in next 24 hours.



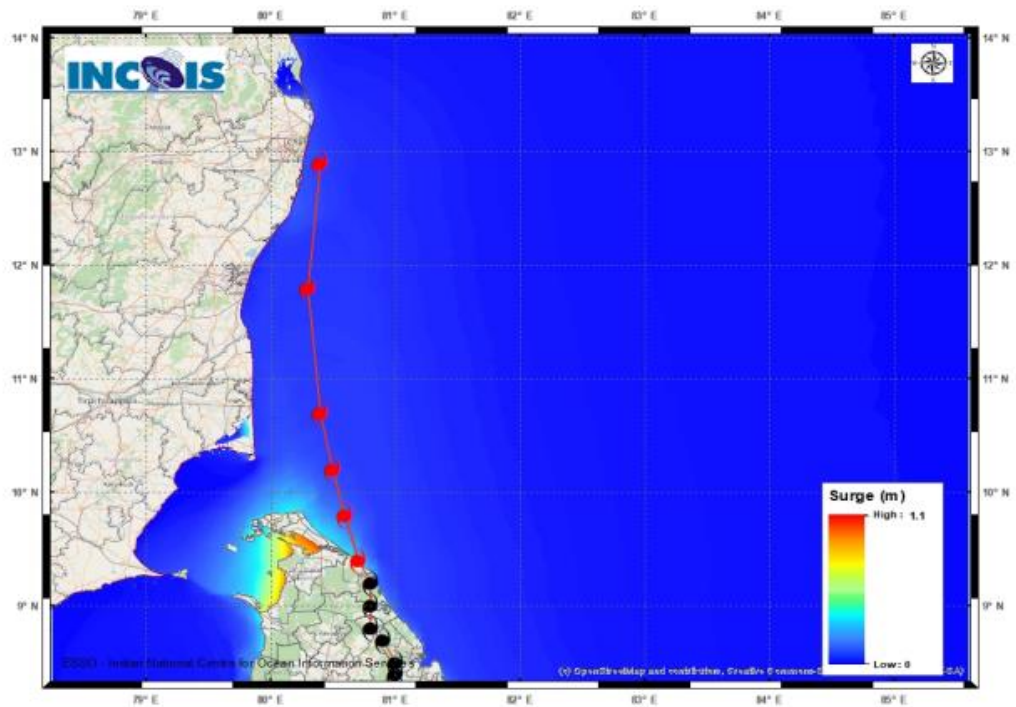
Flash Flood Threat	Flash Flood Risk
■ High Threat (Take Action)	■ High Risk (Take Action)
■ Moderate threat (Be Prepared)	■ Moderate Risk (Be Prepared)
■ Low Threat (Be Updated)	■ Low Risk (Be Updated)

Storm Surge Guidance

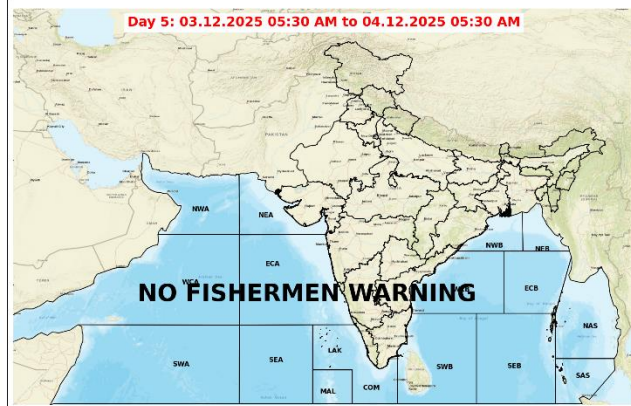
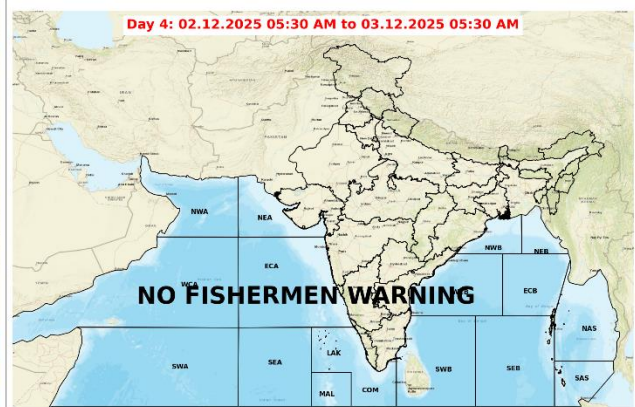
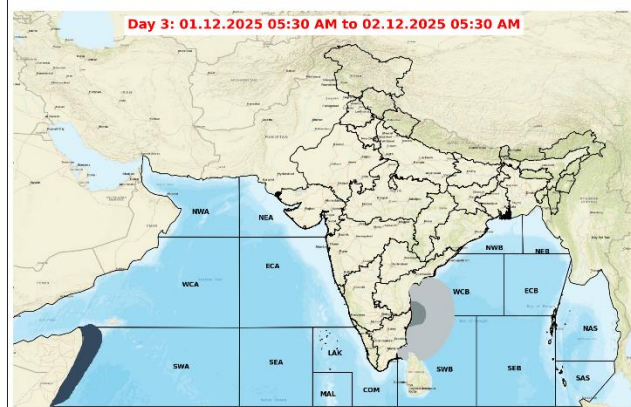
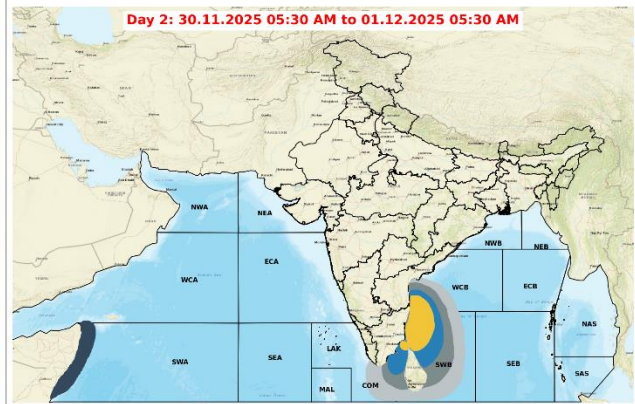
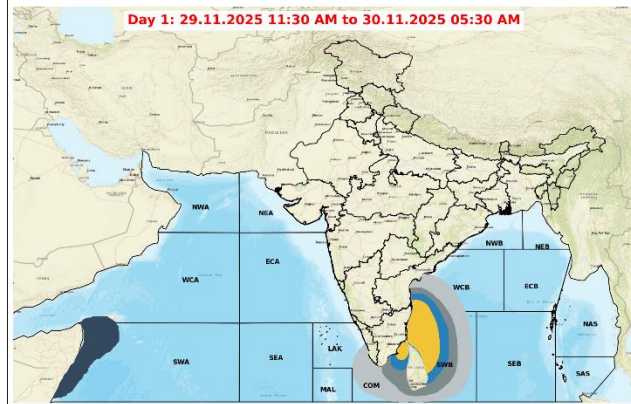
STORM SURGE HEIGHT INFORMATION:

* The below listed surge heights are over and above astronomical tide.

MANDAL/TALUK	DISTRICT	STATE / UNION TERRITORY	NEAREST PLACE OF HABITATION	STORM SURGE (m)*	EXPECTED INUNDATION EXTENT (km)
Chengalpattu	Kancheepuram	Tamil Nadu	Muthukadu	0.3-0.5	Upto 0.12
Ponneri	Thiruvallur	Tamil Nadu	Karimanal	0.2-0.4	Upto 0.15



Fishermen Warning Graphics



Legend

- | | |
|---|---|
| Squally Weather with wind speed 35-45 kmph gusting to 55 kmph | Squally wind with speed 55-65 kmph gusting to 75 kmph |
| Squally Weather with wind speed 40-50 kmph gusting to 60 kmph | CS with Gale winds with speed 60-80 kmph gusting to 90 kmph |
| Squally Weather with wind speed 45-55 kmph gusting to 65 kmph | SCS with Gale wind speed 90-110 kmph gusting to 120 kmph |
| Squally wind with speed 45-55 kmph gusting to 65 kmph | VSCS with Gale wind speed 120-165 kmph gusting to 185 kmph |
| Squally wind with speed 50-60 kmph gusting to 70 kmph | ESCS with Gale wind speed 165-220 kmph gusting to 245 kmph |

Fishermen are advised not to venture into the marked areas.