



**India Meteorological Department
(Ministry of Earth Sciences)**

BULLETIN NO. 5 (BOB/08/2022)

TIME OF ISSUE: 0100 HOURS IST

DATED: 21.11.2022

FROM: INDIA METEOROLOGICAL DEPARTMENT (FAX NO. 24643965/24699216/24623220)

TO: CONTROL ROOM, NDM, MINISTRY OF HOME AFFAIRS (FAX.NO. 23093750)

CONTROL ROOM NDMA (FAX.NO. 26701729)

CABINET SECRETARIAT (FAX.NO.23012284, 23018638)

PS TO HON'BLE MINISTER FOR S & T AND EARTH SCIENCES (FAX NO.23316745)

SECRETARY, MOES (FAX NO. 24629777)

H.Q. (INTEGRATED DEFENCE STAFF AND CDS) (FAX NO. 23005137/23005147)

DIRECTOR GENERAL, DOORDARSHAN (23385843)

DIRECTOR GENERAL, AIR (23421105, 23421219)

PIB MOES (FAX NO. 23389042)

UNI (FAX NO. 23355841)

D.G. NATIONAL DISASTER RESPONSE FORCE (NDRF) (FAX NO. 26105912, 2436 3260)

DIRECTOR, PUNCTUALITY, INDIAN RAILWAYS (FAX NO. 23388503)

CHIEF SECRETARY, ANDAMAN & NICOBAR ISLANDS (FAX NO. 03192- 232656)

CHIEF SECRETARY, GOVT. OF ANDHRA PRADESH (FAX NO. 0863-2441029, 08645-246600)

CHIEF SECRETARY, GOVT. OF TAMIL NADU (FAX NO. 044-25672304)

CHIEF SECRETARY, GOVT. OF PUDUCHERRY (FAX NO. 0413-2337575, 2334145)

Sub: Depression over Southwest Bay of Bengal

The Depression over Southwest Bay of Bengal moved northwestwards with a speed of 12 kmph during past 6 hours and lay centred at 2330 hours IST of yesterday, the 20th November, 2022 over the southwest Bay of Bengal, near latitude 11.4° N and longitude 84.6° E, about 540 km east-northeast of Jaffna (Sri Lanka), 520 km east of Karaikal and 510 km east-southeast of Chennai.

It is very likely to maintain its intensity of depression and move slowly northwestwards during next 06 hours. Thereafter, it is likely to move west-northwestwards and weaken gradually into a well marked low pressure area while moving towards south Andhra Pradesh and North Tamilnadu-Puducherry coasts during subsequent 24 hours.

Warnings:

(i) Rainfall (warning graphics enclosed)

- ❖ Light to moderate rainfall is likely at many places with isolated heavy rainfall over North Tamilnadu-Puducherry and south coastal Andhra Pradesh & Rayalaseema on 21st and 22nd November and light to moderate rainfall at a few places over North coastal Andhra Pradesh during the same period. Light to moderate rainfall is likely over North Tamil Nadu-Puducherry, South Coastal Andhra Pradesh and Rayalaseema on 23rd November.

(ii) Wind warning:

- ❖ **Squally wind speed reaching 45-55 kmph gusting to 65 kmph is likely to prevail over** Southwest and adjoining Westcentral Bay of Bengal and along & off Andhra Pradesh, Tamil Nadu, Puducherry and Sri Lanka coasts till 22nd November morning and decrease gradually thereafter.
- ❖ **Squally weather with wind speed reaching 40-45 kmph gusting to 55 kmph is likely to prevail over** Gulf of Mannar on 21st & 22nd November.

(iii) Sea condition

- ❖ **Sea condition will be rough to very rough** over Southwest and adjoining Westcentral Bay of Bengal and along & off Andhra Pradesh, Tamil Nadu, Puducherry, Sri Lanka coasts till 22nd November morning and improve gradually thereafter.
- ❖ **Sea condition will be rough** over Gulf of Mannar on 21st & 22nd November and improve gradually thereafter.

(iv) Fishermen Warning

Fishermen are advised not to venture into:

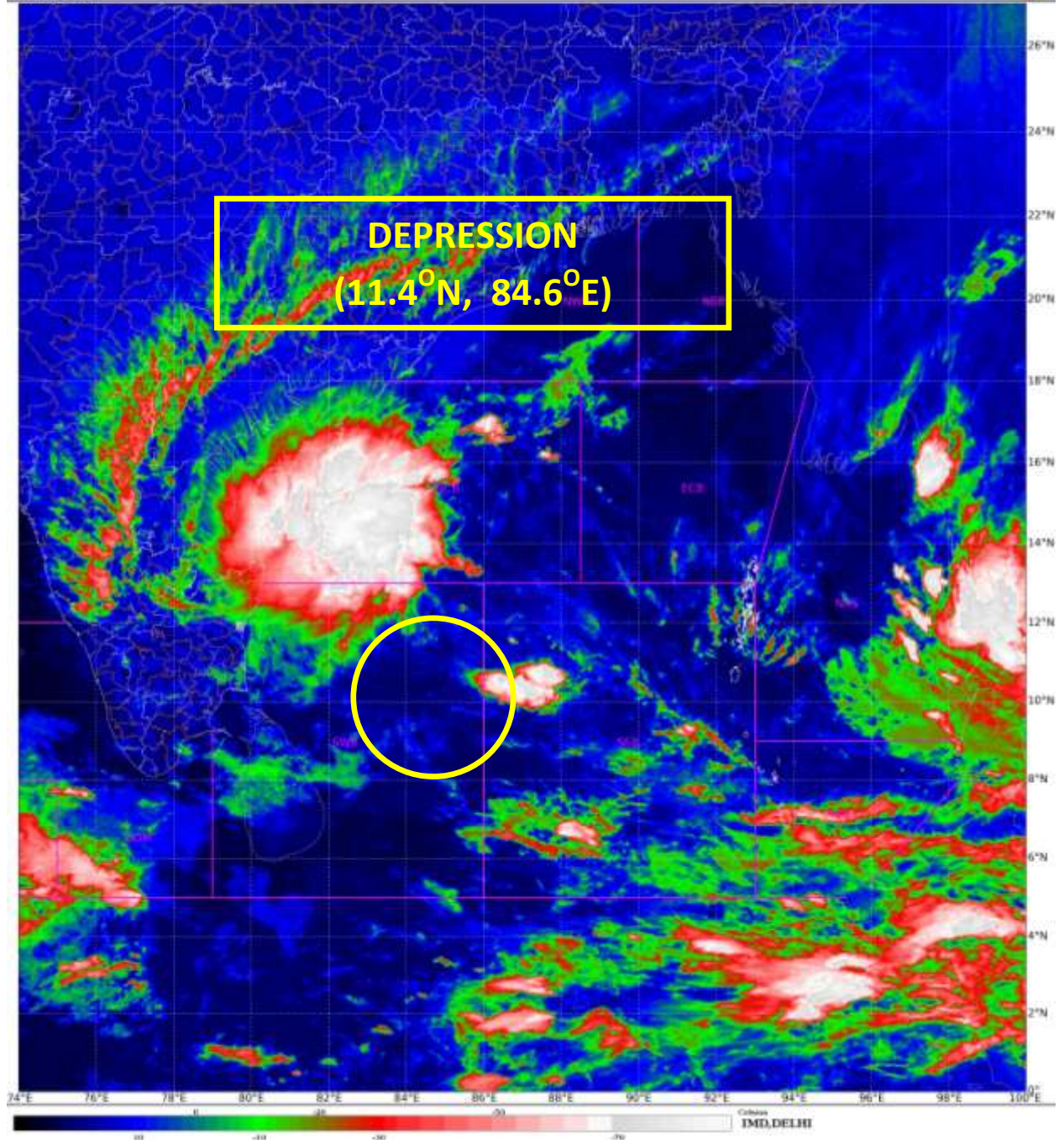
- ❖ Southwest and adjoining Westcentral Bay of Bengal, Gulf of Mannar and along & off Andhra Pradesh, Tamil Nadu, Puducherry, Sri Lanka coasts till 22nd November
- ❖ Gulf of Mannar on 21st & 22nd November.

The system is under continuous surveillance and the next message will be issued at 0830 hours IST of today, the 21st November, 2022.

(Krishna Mishra)
Scientist C, Cyclone Warning Division, New Delhi

Copy to: ACWC Kolkata/ ACWC Chennai/ CWC Bhubaneswar/CWCVisakhapatnam/MO Port Blair

LEGEND: Heavy Rainfall: 64.5 to 115.5mm, **Very Heavy Rainfall:** 115.6 to 204.4mm **Most Places:** more than 76% of total stations, **Isolated Places:** Less than 25% of total





OBSERVED AND FORECAST TRACK OF DEPRESSION OVER SOUTHWEST BAY OF BENGAL BASED ON 1800 UTC OF 20TH NOVEMBER, 2022



DATE/TIME IN UTC

IST=UTC + 0530

L: LOW PRESSURE AREA

WML: WELL MARKED LOW PRESSURE AREA

D: DEPRESSION (17-27 KT)

DD: DEEP DEPRESSION (28-33 KT)

CS: CYCLONIC STORM (34-47 KT)

VSCS: SEVERE CYCLONIC STORM (48-63KT)

VSCS: VERY SEVERE CYCLONIC STORM (64-89 KT)

ESCS: EXTREMELY SEVERE CYCLONIC STORM (90-119 KT)

SuCS: SUPER CYCLONIC STORM (≥ 20 KT)

● LESS THAN 34 KT

○ 34-47 KT

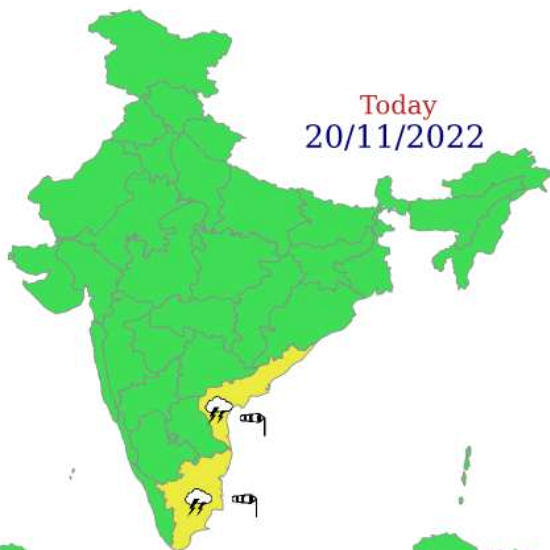
○ ≥ 48 KT

— OBSERVED TRACK

— FORECAST TRACK

▲ CONE OF UNCERTAINTY

Today
20/11/2022



WARNING



Tomorrow
21/11/2022



22/11/2022



23/11/2022



24/11/2022



Heavy Rain



Heavy Snow



Thunderstorm



Dust Storm



Strong Winds



Visibility



Cyclone



Squall/ Hail



Frost



Cold Wave



Heat Wave



Sea State

Fishermen warning graphics



	Squally weather with wind speed 40-45 kmph gusting to 55 kmph
	Squally wind speed with wind speed 45-55 kmph gusting to 65 kmph

Fishermen are advised not to venture into the marked areas.