



**India Meteorological Department  
(Ministry of Earth Sciences)**

**BULLETIN NO. : 23 (BOB/07/2022)**

**TIME OF ISSUE: 1100 HOURS IST**

**DATED: 23.08.2022**

**FROM: INDIA METEOROLOGICAL DEPARTMENT (FAX NO. 24643965/24699216/24623220)**

**TO: CONTROL ROOM, NDM, MINISTRY OF HOME AFFAIRS (FAX.NO. 23093750)**

**CONTROL ROOM NDMA (FAX.NO. 26701729)**

**CABINET SECRETARIAT (FAX.NO.23012284, 23018638)**

**PS TO HON'BLE MINISTER FOR S & T AND EARTH SCIENCES (FAX NO.23316745)**

**SECRETARY, MOES (FAX NO. 24629777)**

**H.Q. (INTEGRATED DEFENCE STAFF AND CDS) (FAX NO. 23005137/23005147)**

**DIRECTOR GENERAL, DOORDARSHAN (23385843)**

**DIRECTOR GENERAL, AIR (23421105, 23421219)**

**PIB MOES (FAX NO. 23389042)**

**UNI (FAX NO. 23355841)**

**D.G. NATIONAL DISASTER RESPONSE FORCE (NDRF) (FAX NO. 26105912, 2436 3260)**

**DIRECTOR, PUNCTUALITY, INDIAN RAILWAYS (FAX NO. 23388503)**

**CHIEF SECRETARY, GOVT. OF MADHYA PRADESH (FAX NO. 755-2441076)**

**CHIEF SECRETARY, GOVT. OF MAHARASHTRA (FAX NO. 022- 22028594)**

**CHIEF SECRETARY, GOVT. OF RAJASTHAN (FAX NO. 0141-2227114)**

**CHIEF SECRETARY, GOVT. OF GUJARAT (FAX NO. 079-23250305)**

**CHIEF SECRETARY, GOVT. OF HARYANA (NA)**

**CHIEF SECRETARY, GOVT. OF DELHI (011-23392102)**

**Subject: Depression weakened into a well marked low pressure area over East Rajasthan and adjoining Northwest Madhya Pradesh**

The depression over East Rajasthan and adjoining Northwest Madhya Pradesh moved nearly northwestwards and weakened into a Well Marked Low Pressure Area over the same region at 0830 hours IST of today, the 23<sup>rd</sup> August, 2022.

**Warnings:**

**Rainfall:**

**23<sup>rd</sup> August:** Rainfall at most places with **heavy to very heavy rainfall** at isolated places is very likely over south Rajasthan, North Gujarat region & Saurashtra & Kutch region and **heavy rainfall** at isolated places likely over West Madhya Pradesh & South Gujarat region.

**24<sup>th</sup> August:** Rainfall at most places with **heavy rainfall** at isolated places is very likely over Southwest Rajasthan.

**Wind:**

**Strong surface wind speed reaching 20-30 gusting to 40 kmph** is very likely to prevail over Southeast Rajasthan and adjoining West Madhya Pradesh and strong surface **wind speed**

**reaching 15-25 gusting to 35 kmph** is very likely to prevail over remaining parts of Rajasthan and adjoining North Gujarat region and south Haryana & Delhi during next 24 hours.

**Damage expected and action suggested over south Rajasthan, North Gujarat region & Saurashtra & Kutch region due to very heavy rainfall on 23rd August, 2022.**

➤ **Impact Expected**

- Localized Flooding of roads, water logging in low lying areas and closure of underpasses mainly in urban areas of the above region.
- Occasional reduction in visibility due to heavy rainfall.
- Disruption of traffic in major cities due to water logging in roads leading to increased travel time.
- Minor damage to kutchha roads.
- Possibilities of damage to vulnerable structure.
- Localized Landslides/Mudslides
- Damage to horticulture and standing crops in some areas due to inundation.
- It may lead to riverine flooding in some river catchments (for riverine flooding please visit Web page of CWC)

➤ **Action Suggested**

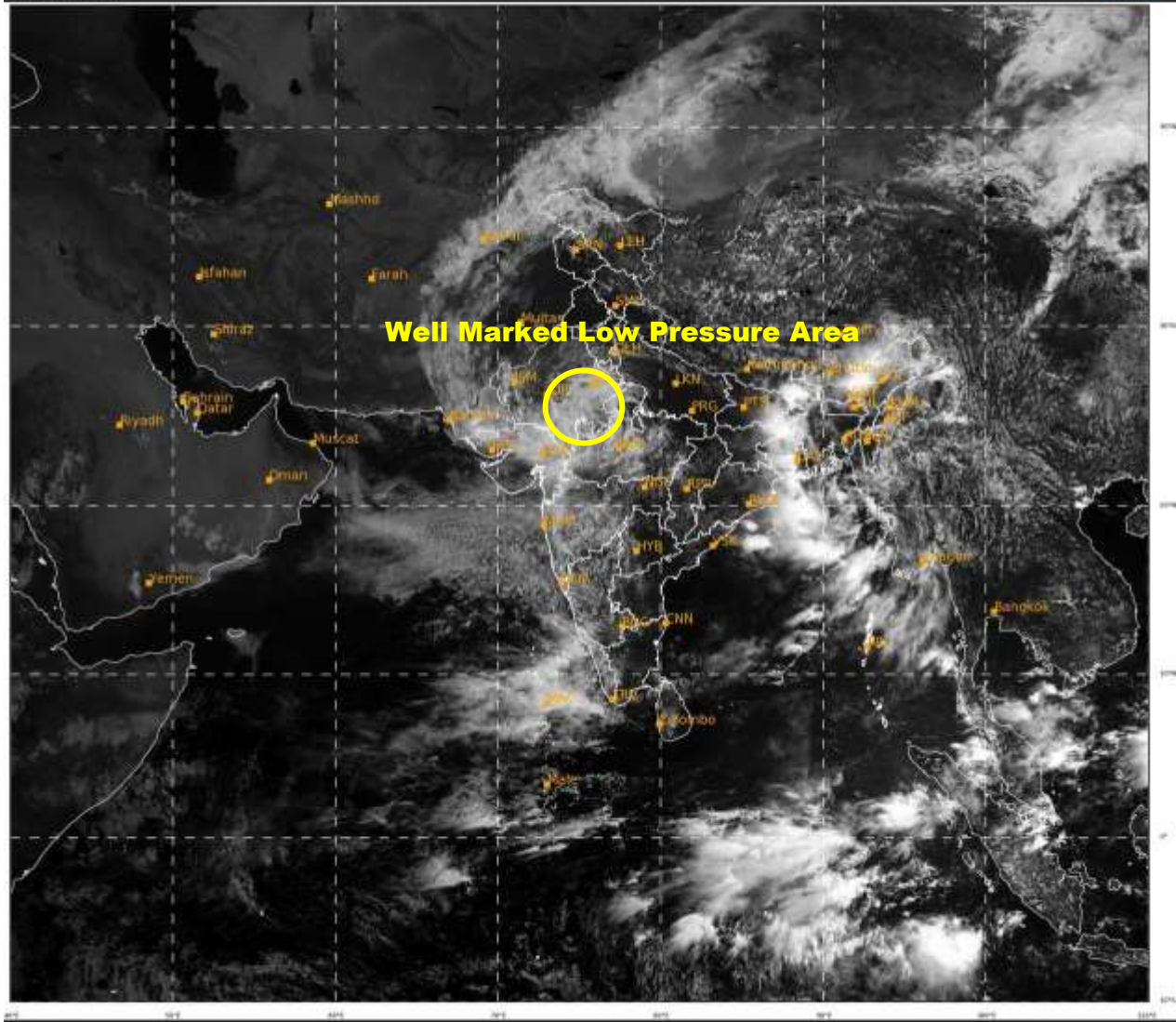
- Check for traffic congestion on your route before leaving for your destination.
- Follow any traffic advisories that are issued in this regard.
- Avoid going to areas that face the water logging problems often.
- Avoid staying in vulnerable structure.

**This is last bulletin in association with this system. However regular bulletins shall continue from National Weather Forecasting Centre, New Delhi and Meteorological Centre Jaipur, Bhopal and Ahmedabad.**

**(Anand Kumar Das)**  
**Scientist E, Cyclone Warning Division, New Delhi**

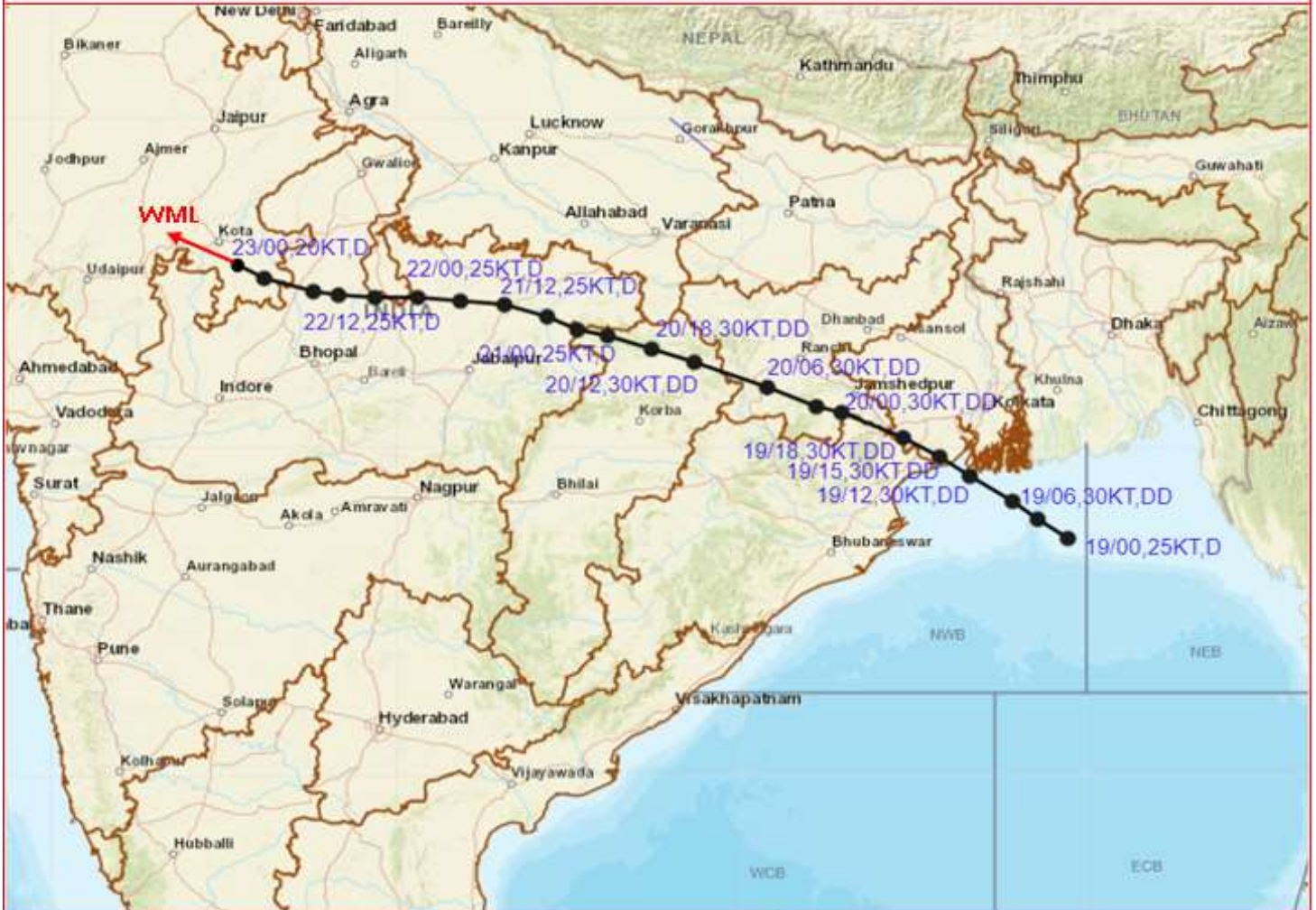
**Copy to: ACWC Mumbai/ ACWC Kolkata/ ACWC Chennai/ CWC Bhubaneswar/CWCVisakhapatnam/ / MO Port Blair/MC Raipur/MC Bhopal/MC Hyderabad/RMC Nagpur/RMC New Delhi/MC Jaipur**

**LEGEND: Heavy Rainfall:** 64.5 to 115.5mm, **Very Heavy Rainfall:** 115.6 to 204.4mm **Extremely Heavy Rainfall:** more than 204.5 mm, **Most Places:** more than 76% of total stations, **Many Places:** 50% to 75% of total stations, **Isolated Places:** Less than 25% of total stations





# OBSERVED TRACK OF DEEP DEPRESSION OVER NORTHWEST BAY OF BENGAL DURING 19<sup>th</sup> - 23<sup>rd</sup> AUGUST, 2022



DATE/TIME IN UTC  
IST=UTC + 0530  
L: LOW PRESSURE AREA  
WML: WELL MARKED LOW PRESSURE AREA  
D: DEPRESSION (17-27 KT)  
DD: DEEP DEPRESSION (28-33 KT)  
CS: CYCLONIC STORM (34-47 KT)  
SCS: SEVERE CYCLONIC STORM (48-63 KT)  
VSCS: VERY SEVERE CYCLONIC STORM (64-89 KT)  
ESCS: EXTREMELY SEVERE CYCLONIC STORM (90-119 KT)  
SuCS: SUPER CYCLONIC STORM ( $\geq 120$  KT)

- LESS THAN 34 KT
- 34-47 KT
- $\geq 48$  KT
- OBSERVED TRACK
- FORECAST TRACK
- CONE OF UNCERTAINTY

 Heavy Rain  
 Strong Winds  
 Frost

 Heavy Snow  
 Visibility  
 Cold Wave

 Thunderstorm  
 Cyclone  
 Heat Wave

 Dust Storm  
 Squall/ Hail  
 Sea State

<b>Most Vigil (Take Action)</b>
<b>Be prepared/ updated (Keep Vigil)</b>
<b>Be aware (Be updated)</b>
<b>No Warning</b>