



India Meteorological Department
Earth System Science Organisation
(Ministry of Earth Sciences)

BULLETIN NO. : 31 (ARB/02/2020)

TIME OF ISSUE: 0815 HOURS IST

DATED: 04.06.2020

FROM: INDIA METEOROLOGICAL DEPARTMENT (FAX NO. 24643965/24699216/24623220)

TO: CONTROL ROOM, NDM, MINISTRY OF HOME AFFAIRS (FAX.NO. 23092398/23093750)

CONTROL ROOM NDMA (FAX.NO. 26701729)

CABINET SECRETARIAT (FAX.NO.23012284, 23018638)

PS TO HON'BLE MINISTER FOR S & T AND EARTH SCIENCES (FAX NO.23316745)

SECRETARY, MOES (FAX NO. 24629777)

H.Q. (INTEGRATED DEFENCE STAFF AND CDS) (FAX NO. 23005137/23005147)

DIRECTOR GENERAL, DOORDARSHAN (23385843) DIRECTOR GENERAL, AIR (23421101, 23421105, 23421219)

PIB MOES (FAX NO. 23389042)

UNI (FAX NO. 23355841)

D.G. NATIONAL DISASTER RESPONSE FORCE (NDRF) (FAX NO. 26105912, 2436 3260)

DIRECTOR, PUNCTUALITY, INDIAN RAILWAYS (FAX NO. 23388503)

CHIEF SECRETARY, MAHARASHTRA (FAX NO. 022- 22028594)

CHIEF SECRETARY, CHHATTISGARH (FAX NO. 0771-2221206)

CHIEF SECRETARY, MADHYA PRADESH (FAX NO. 0755-2551521)

Sub: **Depression over western parts of Vidarbha** [remnant of the Severe Cyclonic Storm '**NISARGA**']

The Deep Depression [remnant of the Severe Cyclonic Storm '**NISARGA**'] over Madhya Maharashtra moved east-northeastwards with a speed of about 23 kmph during past 06 hours, weakened into a **Depression** and lay centred at 0530 hours IST of today, the 04th June, 2020, near latitude 20.5°N and longitude 76.0°E, over western parts of Vidarbha, about 110 km west-southwest of Akola, 320 Km west-southwest of Nagpur and 100 km northeast of Aurangabad.

It is very likely to move east-northeastwards and weaken into a well marked Low pressure area during next 12 hours.

Warnings:

(i) Rainfall:

Light to moderate rainfall at most places with heavy to very heavy falls at isolated places very likely over east Madhya Pradesh and Chhattisgarh. Light to moderate rainfall at most places with heavy falls at isolated places very likely over Vidarbha and west Madhya Pradesh during next 24 hours.

(ii) Wind warning

Squally wind, speed reaching 35-45 kmph gusting to 55 kmph, is prevailing over western Districts of Vidarbha. It is likely reduce gradually during next 12 hours.

The next bulletin will be issued at 1130 hrs IST of today, the 04th June, 2020.

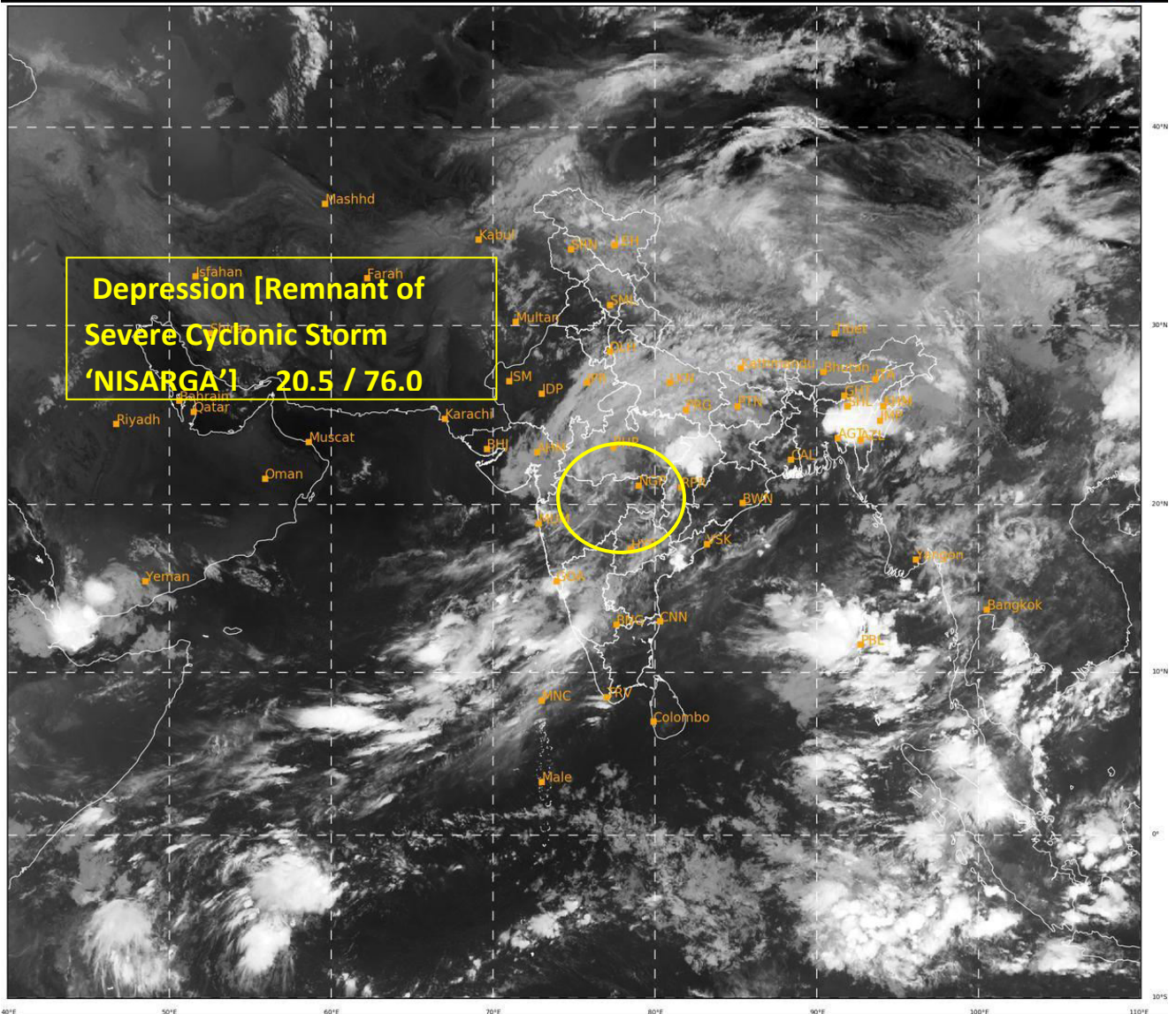
(Sunitha Devi.S)

Scientist-E, RSMC, New Delhi

Copy to: ACWC Chennai/ ACWC Mumbai/ MC Goa/ MC Bengaluru/ CWC Ahmedabad/ Thiruvananthapuram.

Spatial rainfall distribution: Isolated: <25%, A few: 26-50%, Many: 51-75%, Most: 76-100%

Rainfall amount (mm): Heavy rain: 64.5 – 115.5, Very heavy rain: 115.6 – 204.4, Extremely heavy rain: 204.5 or more.



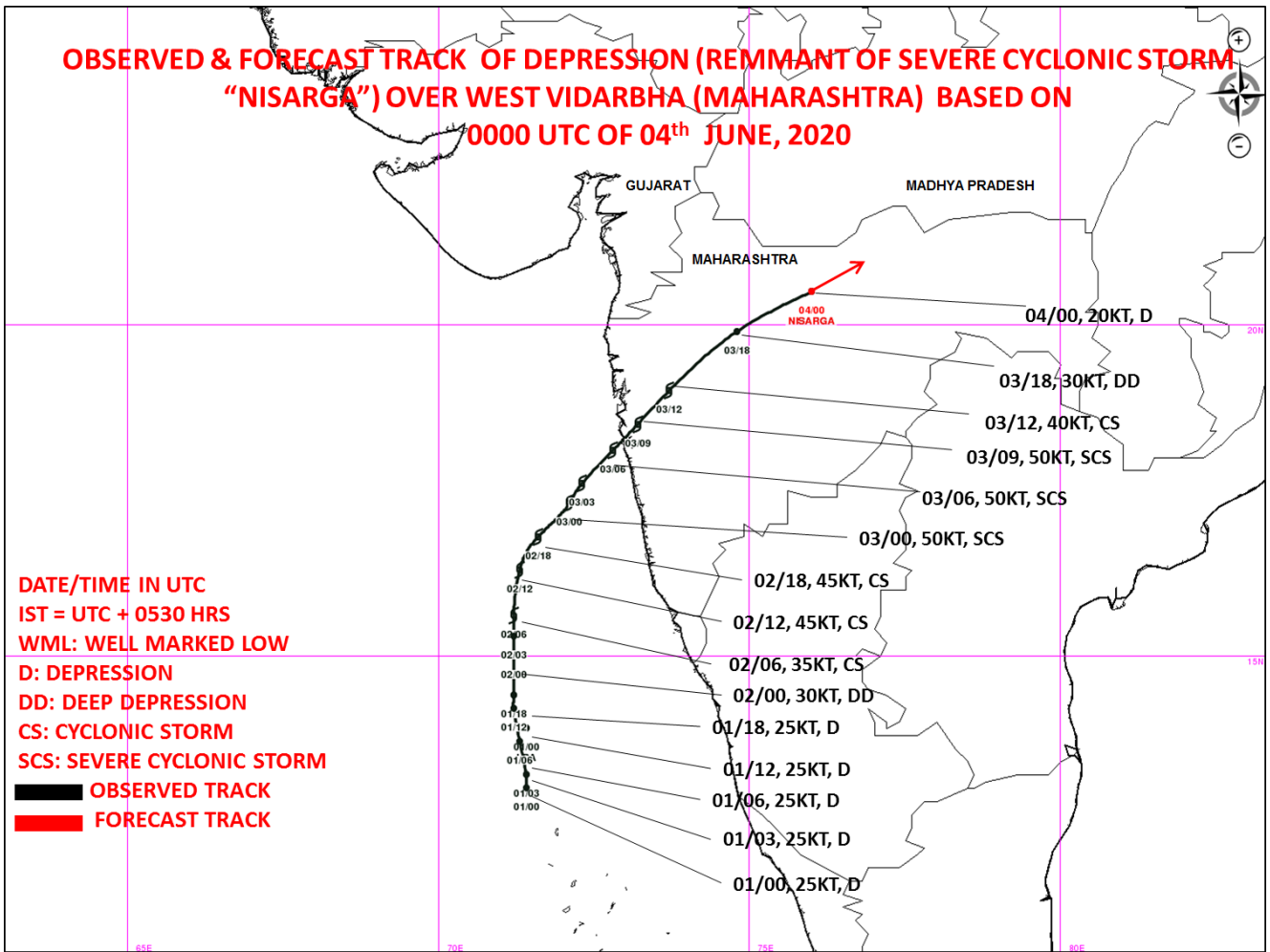
412

935

IMD, DELHI

Spatial rainfall distribution: Isolated: <25%, A few: 26-50%, Many: 51-75%, Most: 76-100%
Rainfall amount (mm): Heavy rain: 64.5 – 115.5, Very heavy rain: 115.6 – 204.4, Extremely heavy rain: 204.5 or more.

OBSERVED & FORECAST TRACK OF DEPRESSION (REMMANT OF SEVERE CYCLONIC STORM "NISARGA") OVER WEST VIDARBHA (MAHARASHTRA) BASED ON 0000 UTC OF 04th JUNE, 2020



Spatial rainfall distribution: Isolated: <25%, A few: 26-50%, Many: 51-75%, Most: 76-100%
Rainfall amount (mm): Heavy rain: 64.5 – 115.5, Very heavy rain: 115.6 – 204.4, Extremely heavy rain: 204.5 or more.